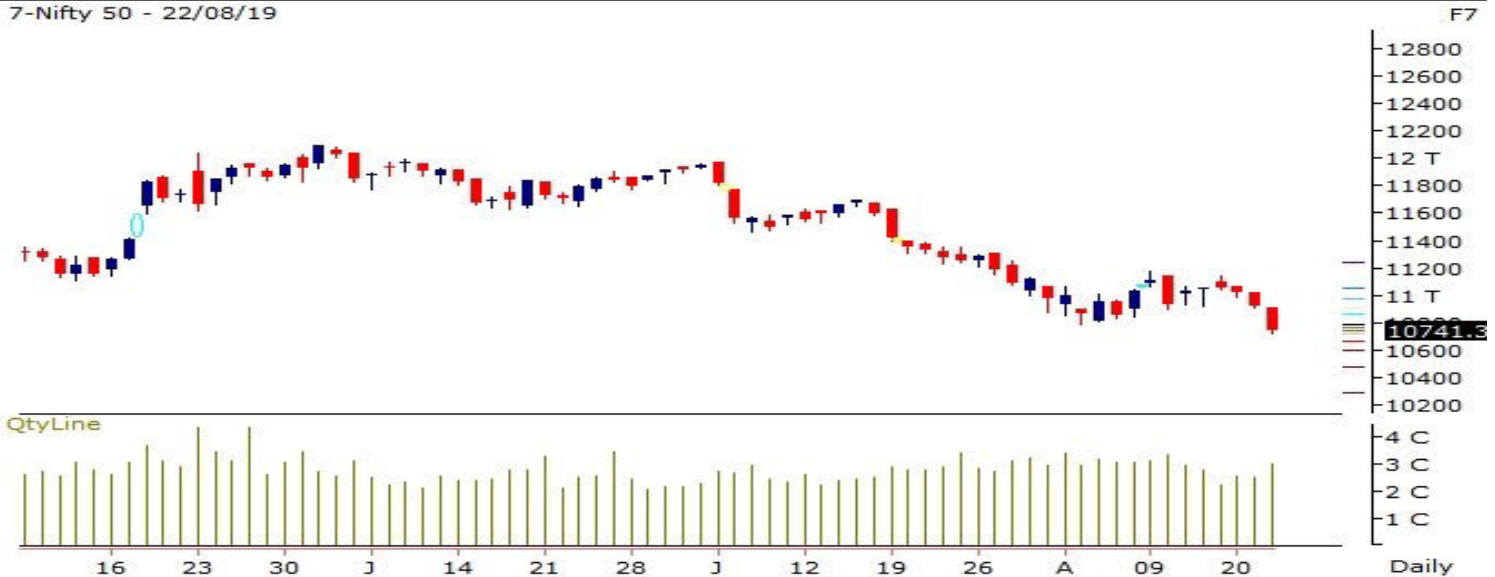


NIFTY SPOT : IMMEDIATE RESISTANCE AT 10800

7-Nifty 50 - 22/08/19



Source: Falcon, BP Equities Research

Nifty spot closed 1.62% lower at 10741. Nifty opened flat and remained under pressure throughout the day closing near days low. Index has broken its previous swing low and sustenance below that will call for some further selling in short term. Going ahead index has immediate resistance at 10800/10890, till it maintains below this range it is expected to continue its down move towards 10670-10580.

Intraday Nifty

Resistance - 10800/10830/10890

Support -10670/10630/10580

BANK NIFTY SPOT : IMMEDIATE RESISTANCE AT 27240

7-Nifty Bank - 22/08/19



Source: Falcon, BP Equities Research

Bank Nifty spot closed 2.47% lower at 27034. Bank Nifty opened flat and remained under pressure throughout the day closing near days low. Index has broken its previous swing low which is bearish signal and sustenance below that will call for some further selling in short term. Going ahead index has immediate resistance at 27240-27340, till it maintains below this range it is expected to continue its down move towards 26880-26580.

Intraday Bank Nifty

Resistance - 27240/27340/27480

Support - 26880/26740/26580

Technical Trend

INTRADAY TRADER'S PICKS

Sr.No.	STOCK	CLOSE	Target 1	Target 2	Stop Loss	RECOMMENDATION
1	DIVISLAB	1568.50	1592	1607	1562	BUY ABOVE 1577
2	HINDUNILVR	1872	1900	1920	1860	BUY ABOVE 1880
3	LICHSGFIN	414	405	400	415	SELL BELOW 410
4	GRASIM	688.55	675	670	887	SELL BELOW 681
5	UPL	518	510	505	520	SELL BELOW 515

Technical Trend

DERIVATIVES

INDICES SNAPSHOT

SCRIPS	CP AS ON 21/8/2019	CP AS ON 22/8/2019	Change (%)	OI AS ON 21/8/2019	OI AS ON 22/8/2019	Change (%)
BANKNIFTY	27739.8	27021.8	-2.59	1818020	2057300	13.16
NIFTY	10932.65	10732.1	-1.83	22379400	22754925	1.68
NIFTYIT	15595	15628	0.21	10800	10200	-5.56

Derivative Highlights

- ⇒ Nifty Future closed with a Discount of 10 points v/s a Premium of 14 points in the previous session.
- ⇒ Nifty Future Open Interest Increased by 1.68%. Bank Nifty Future Open Interest Increased by 13.16%.
- ⇒ Nifty PCR - OI Increased from 0.50 to 0.83 , Nifty Bank PCR - OI Decreased from 0.55 to 0.54
- ⇒ FII Sold Rs 902.99 crore while DII Bought Rs 1719.07 crore in the Cash Segment. FII Sold Rs 243.76 crore in Index Futures and Bought Rs 3089.02 crore in index options, while in Future they Sold Rs. 125.36 crore and Sold Rs 61.38 in stock options.
- ⇒ Among Index Option space, Highest Open Interest concentration was seen in 11000 & 10500 Strike price among the PE options. Where as among CE Options Highest Open Interest Concentration was seen in 11000 & 11500 Strike price.
- ⇒ Highest Open Interest Build Up among the PE options was seen in 10700 & 10500 Strike price. Among CE options highest build up was seen in 11000 & 10800 Strike price.

OI Concentration

PUT OPTION		CALL OPTION	
Strike Price	Open Interest	Strike Price	Open Interest
11000	2738250	11000	4498875
10500	2518875	11500	2791050
10700	2326200	11100	2749425
10600	1945575	11200	2676750
10800	1741950	10900	2068125

Highest Change in OI

PUT OPTION		CALL OPTION	
Strike Price	Change in OI	Strike Price	Change in OI
10700	389925	11000	1162125
10500	356775	10800	964425
10400	236550	10900	905850
10300	228975	11100	491475
10000	132750	11500	346725

MWPL

SCRIPS	OI %	BAN
IDBI	95%	YES
SAIL	86%	NO
YESBANK	86%	NO
BANKINDIA	84%	NO
DHFL	83%	YES
DISHTV	82%	NO
PNB	77%	NO
NCC	74%	NO
RELCAPITAL	73%	NO
IBULHSGFIN	72%	NO

Technical Trend

Stock Analysis

Long Build-up	Long Unwinding	Short Build-up	Short Covering
BEL	DHFL	LICHSGFIN	OFSS
PETRONET	PNB	GRASIM	STAR
TECHM	JINDALSTEL	DLF	DRREDDY
VOLTAS	BHARATFORG	UPL	NIITTECH
DIVISLAB	HEXAWARE	COALINDIA	TCS
HINDUNILVR	MOTHERSUMI	MARUTI	UJJIVAN

STATISTICS

Highest Premium

SCRIPS	Premium %	Price change %
YESBANK	2.40	-11.80
KAJARIACER	0.81	-1.40
PNB	0.73	-3.40
UJJIVAN	0.54	1.20
IGL	0.47	-1.40

Highest Discount

SCRIPS	Premium %	Price change %
RELINFRA	9.66	-14.40
DHFL	9.55	-6.90
IDBI	4.47	-5.00
IDEA	1.89	-6.30
APOLLOTYRE	1.41	0.00

TOP 5 VOLUME GAINER FOR THE SESSION

SCRIPS	CP AS ON 21/8/2019	CP AS ON 22/8/2019	Change (%)	VOL AS ON 21/8/2019	VOL AS ON 22/8/2019	Change (%)
DLF	172.05	144.3	-16.13	4429	52493	1085.21
EXIDEIND	175.35	170.3	-2.88	473	2502	428.96
LICHSGFIN	460.95	414.7	-10.03	5097	26060	411.28
PAGEIND	17970.65	17675.05	-1.64	734	2119	188.69
UPL	535.2	518.25	-3.17	3677	10399	182.81

TOP 5 VOLUME LOSER FOR THE SESSION

SCRIPS	CP AS ON 21/8/2019	CP AS ON 22/8/2019	Change (%)	VOL AS ON 21/8/2019	VOL AS ON 22/8/2019	Change (%)
UBL	1289	1291.25	0.17	3585	1062	-70.38
BSOFT	60.05	59.15	-1.50	882	316	-64.17
BHEL	48.4	47.9	-1.03	5494	2057	-62.56
NESTLEIND	12571.15	12469.75	-0.81	6983	2820	-59.62
RAYMOND	565.65	548.25	-3.08	4596	2070	-54.96

Technical Trend

TOP 10 OPEN INTEREST GAINER FOR THE SESSION

SCRIPS	CP AS ON 21/8/2019	CP AS ON 22/8/2019	Change (%)	OI AS ON 21/8/2019	OI AS ON 22/8/2019	Change (%)
LICHSGFIN	460.95	414.7	-10.03	9077200	11826100	30.28
BANKNIFTY	27739.8	27021.8	-2.59	1818020	2057300	13.16
BAJAJFINSV	7160.05	6776.45	-5.36	948375	1041750	9.85
TORNTPHARM	1662.75	1666.55	0.23	514000	559500	8.85
GRASIM	698.45	688.55	-1.42	15933750	17321250	8.71
MARUTI	6200.85	6163.95	-0.60	3264525	3522300	7.90
PEL	1778.05	1718.8	-3.33	3260996	3504106	7.46
TVSMOTOR	368.15	356.25	-3.23	7955200	8519500	7.09
TATAELXSI	633.1	606	-4.28	2304000	2455800	6.59
AMARAJABAT	612.45	599.05	-2.19	1344700	1429400	6.30

TOP 10 OPEN INTEREST LOSER FOR THE SESSION

SCRIPS	CP AS ON 21/8/2019	CP AS ON 22/8/2019	Change (%)	OI AS ON 21/8/2019	OI AS ON 22/8/2019	Change (%)
BSOFT	60.05	59.15	-1.50	3325200	2958000	-11.04
BERGEPAIN	366.85	363.35	-0.95	3590400	3297800	-8.15
CESC	773.75	756.15	-2.27	992000	920000	-7.26
TATAPOWER	51.15	53.3	4.20	53064000	49392000	-6.92
HEXAWARE	381.5	377.65	-1.01	2622000	2449500	-6.58
NIFTYIT	15595	15628	0.21	10800	10200	-5.56
ARVIND	48.45	45.65	-5.78	6588000	6228000	-5.46
STAR	374.15	377.65	0.94	3166800	3021600	-4.59
CHOLAFIN	256.35	249.4	-2.71	3975000	3795000	-4.53
BHEL	48.4	47.9	-1.03	43507500	41662500	-4.24

Technical Trend

Pivot Report– Nifty 50

Symbol	PClose	Support3	Support2	Support1	Pivot	Resist1	Resist2	Resist3
ADANI PORTS	345.1	333.0	336.9	341.0	344.9	349.0	352.9	357.0
ASIAN PAINTS LIMITED	1570.2	1532.1	1549.2	1559.7	1576.8	1587.3	1604.4	1614.9
Axis Bank Limited	661.2	643.9	650.8	656.0	662.9	668.1	675.0	680.2
Bajaj Auto Limited	2744.3	2681.7	2706.5	2725.4	2750.2	2769.1	2793.9	2812.8
BAJAJ FINANCE LIMITED	3114.1	2894.8	2996.6	3055.4	3157.2	3215.9	3317.7	3376.5
Bajaj Finserv Limited	6767.4	6163.2	6451.6	6609.5	6897.9	7055.7	7344.1	7502.0
Bharat Petroleum Ltd	313.0	284.8	297.2	305.1	317.5	325.4	337.8	345.7
Bharti Airtel Limited	352.8	343.9	347.5	350.1	353.7	356.3	359.9	362.5
BHARTI INFRA TEL LIMITED	246.6	239.8	242.0	244.3	246.5	248.8	251.0	253.3
BRITANNIA IND LTD.	2440.8	2312.8	2352.9	2396.8	2436.9	2480.8	2520.9	2564.8
Cipla Ltd	464.0	450.4	455.5	459.8	464.9	469.1	474.2	478.5
COALINDIA	180.9	165.5	171.6	176.2	182.3	187.0	193.1	197.7
Dr. Reddys Lab Ltd	2545.4	2455.3	2479.1	2512.3	2536.1	2569.3	2593.1	2626.3
Eicher Motors Ltd	15523.4	14746.3	15113.2	15318.3	15685.1	15890.2	16257.1	16462.2
GAIL (India) Limited	120.7	113.8	116.8	118.7	121.7	123.7	126.7	128.6
Grasim Ind Ltd.	688.6	649.4	665.3	676.9	692.9	704.5	720.4	732.0
HCL Technologies Ltd	1078.9	1030.9	1043.5	1061.2	1073.8	1091.5	1104.1	1121.8
HDFC Bank Ltd.	2174.1	2100.0	2133.5	2153.8	2187.3	2207.6	2241.1	2261.4
HDFC Ltd.	2014.1	1924.7	1966.3	1990.2	2031.9	2055.8	2097.4	2121.3
Hero MotoCorp Limited	2626.3	2475.2	2540.6	2583.4	2648.8	2691.7	2757.1	2799.9
Hindalco Ind Ltd.	176.6	166.4	169.5	173.0	176.2	179.7	182.8	186.3
Hindustan Unilever L	1872.1	1811.2	1826.6	1849.3	1864.7	1887.4	1902.8	1925.5
IBULHSGFIN	450.6	404.2	421.3	435.9	453.0	467.6	484.7	499.3
ICICI BANK LTD.	399.1	379.4	388.7	393.9	403.2	408.4	417.7	422.9
Indian Oil Corp. Ltd	117.8	110.5	113.5	115.6	118.6	120.7	123.7	125.8
IndusInd Bank Ltd.	1335.7	1285.9	1308.0	1321.8	1343.9	1357.7	1379.8	1393.6
Infosys Limited	795.7	782.7	787.5	791.6	796.5	800.6	805.4	809.5
ITC Ltd.	240.1	230.4	234.7	237.4	241.7	244.4	248.7	251.4
JSW STEEL LIMITED	217.0	205.5	209.1	213.1	216.7	220.7	224.3	228.3
Kotak Mahindra Bank	1478.3	1426.2	1449.3	1463.8	1486.9	1501.4	1524.5	1539.0
Larsen & Toubro Limited	1294.3	1231.5	1257.3	1275.8	1301.6	1320.1	1345.9	1364.4
Mah & Mah Ltd.	511.8	492.6	501.2	506.5	515.1	520.4	529.0	534.3
Maruti Suzuki India	6208.6	6021.0	6094.5	6151.5	6225.0	6282.0	6355.5	6412.5
NTPC Limited	114.8	108.4	111.1	112.9	115.7	117.5	120.2	122.0
Oil & Natural Gas Co	117.0	109.6	112.9	114.9	118.2	120.2	123.5	125.5
Power Grid Corporation	202.8	195.8	198.3	200.5	203.0	205.3	207.8	210.0
Reliance Industries	1246.8	1201.3	1220.1	1233.4	1252.2	1265.5	1284.3	1297.6
State Bank of India	268.6	253.5	260.4	264.5	271.4	275.5	282.4	286.5
Sun Pharma Ltd	414.6	396.2	402.4	408.5	414.6	420.7	426.9	433.0
TATA CONSULTANCY SERVICES	2216.0	2113.1	2141.6	2178.8	2207.2	2244.4	2272.9	2310.1
Tata Motors Limited	107.7	96.8	101.5	104.6	109.3	112.4	117.1	120.2
Tata Steel Limited	333.7	310.5	320.5	327.1	337.0	343.6	353.6	360.2
TECH MAHINDRA LIMITED	682.8	656.7	662.4	672.6	678.3	688.5	694.2	704.4
TITAN COMPANY LIMITED	1061.8	1027.9	1038.0	1049.9	1059.9	1071.8	1081.9	1093.8
UltraTech Cement Limited	3838.2	3662.9	3740.0	3789.1	3866.2	3915.3	3992.4	4041.5
UPL LIMITED	518.1	454.9	481.4	499.7	526.2	544.5	571.0	589.3
Vedanta Limited	129.1	109.7	117.5	123.3	131.1	136.9	144.7	150.5
Wipro Ltd	252.1	244.2	246.4	249.2	251.4	254.2	256.4	259.2
YES BANK LIMITED	56.3	35.9	44.6	50.4	59.1	64.9	73.6	79.4
Zee Entertainment Enterprises	329.0	299.4	311.3	320.1	332.0	340.8	352.7	361.5

**Disclaimer Appendix****Analyst s holding in the Stock : Nil****Analyst s Certification:**

We analysts and the authors of this report, hereby certify that all of the views expressed in this research report accurately reflect our personal views about any and all of the subject issuer s or securities. We also certify that no part of our compensation was, is, or will be directly or indirectly related to the specific recommendation s or view s in this report. Analysts aren't registered as research analysts by FINRA and might not be an associated person of the BP Equities Pvt. Ltd. Institutional Equities.

General Disclaimer

This report has been prepared by the research department of BP EQUITIES Pvt. Ltd, is for information purposes only. This report is not construed as an offer to sell or the solicitation of an offer to buy or sell any security in any jurisdiction where such an offer or solicitation would be illegal.

BP EQUITIES Pvt. Ltd have exercised due diligence in checking the correctness and authenticity of the information contained herein, so far as it relates to current and historical information, but do not guarantee its accuracy or completeness. The opinions expressed are our current opinions as of the date appearing in the material and may be subject to change from time to time. Prospective investors are cautioned that any forward looking statement are not predictions and are subject to change without prior notice.

Recipients of this material should rely on their own investigations and take their own professional advice. BP EQUITIES Pvt. Ltd or any of its affiliates or employees shall not be in any way responsible for any loss or damage that may arise to any person from any inadvertent error in the information contained in this report. BP EQUITIES Pvt. Ltd. or any of its affiliates or employees do not provide, at any time, any express or implied warranty of any kind, regarding any matter pertaining to this report, including without limitation the implied warranties of merchantability, fitness for a particular purpose, and non-infringement. The recipients of this report should rely on their own investigations.

BP EQUITIES Pvt. Ltd and/or its affiliates and/or employees may have interests/ positions, financial or otherwise in the securities mentioned in this report. Opinions expressed are our current opinions as of the date appearing on this material only. While we endeavor to update on a reasonable basis the information discussed in this material, there may be regulatory, compliance, or other reasons that prevent us from doing so.

This report is not directed to or intended for display, downloading, printing, reproducing or for distribution to or use by any person in any locality, state and country or other jurisdiction where such distribution, publication or use would be contrary to the law or regulation or would subject to BP EQUITIES Pvt. Ltd or any of its affiliates to any registration or licensing requirement within such jurisdiction.

Corporate Office:

4th floor,
Rustom Bldg,
29, Veer Nariman Road, Fort,
Mumbai-400001
Phone- +91 22 6159 6464
Fax-+91 22 6159 6160
Website- www.bpwealth.com

Registered Office:

24/26, 1st Floor, Cama Building,
Dalal street, Fort,
Mumbai-400001
BP Equities Pvt. Ltd.
CIN No: U67120MH1997PTC107392