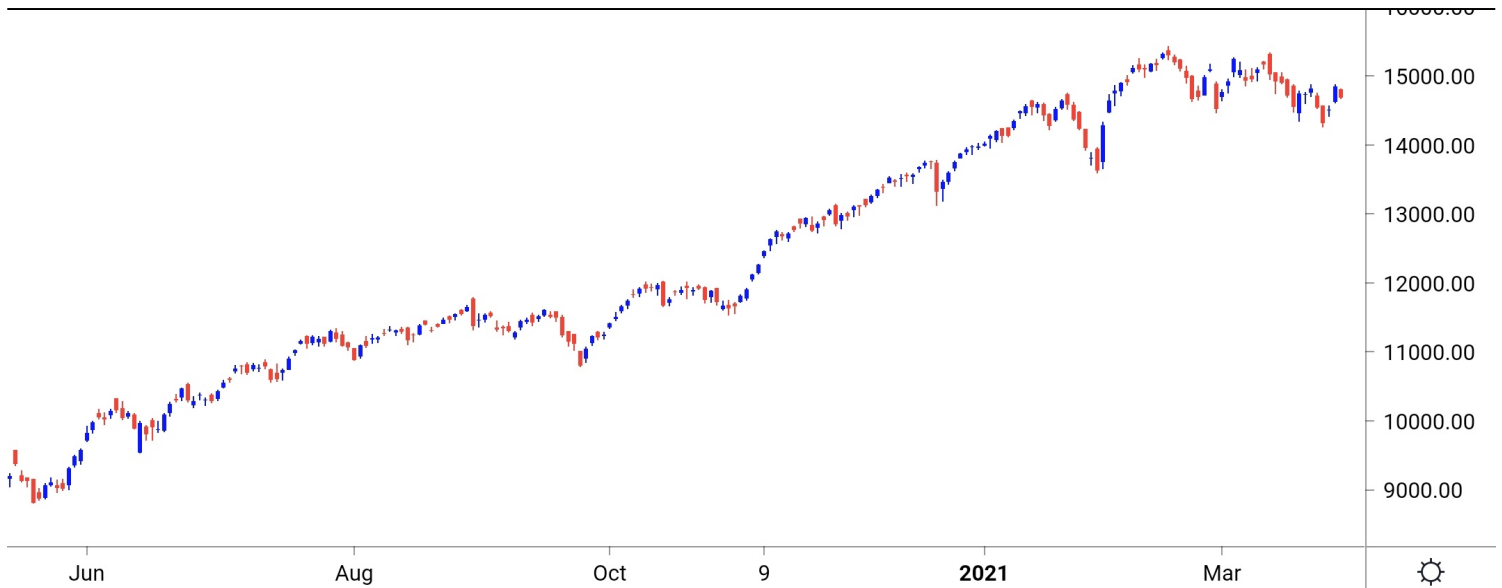


**NIFTY SPOT : IMMEDIATE SUPPORT AT 14650-14600**



Source: Falcon, BP Equities Research

Nifty spot closed 1.04% lower at 14690. Index opened the day with gap down and remain under pressure throughout the day closing session near days low. Index has reversed hitting short term 21 EMA which is placed around 14850. Index to continue its upward momentum need to sustenance above the same. Going ahead index has an immediate resistance around 14780-14850-15000. While on the other hand support is placed around 14650-14600-14500.

Intraday Nifty

Resistance - 14780-14850-15000

Support - 14650-14600-14500

**BANK NIFTY SPOT : IMMEDIATE SUPPORT AT 33100-32900**



Source: Falcon, BP Equities Research

Bank Nifty spot closed 1.69% lower at 33303. Banknifty opened with gap down and remain under pressure throughout the day closing session near days low. Going ahead Banknifty has an immediate hurdle around 33700, sustenance above the same will open the gate for 34000-34250. While on opposite side support is visible around 33100-32900-32700.

Intraday Bank Nifty

Resistance - 33700-34000-34250

Support - 33100-32900-32700

## Technical Trend

### INTRADAY TRADER'S PICKS

Sr.No.	STOCK	CLOSE	Target 1	Target 2	Stop Loss	RECOMMENDATION
1	BAJAJ-AUTO	3670	3715	3750	3645	BUY ABOVE 3680
2	ICICIBANK	582	591	597	579	BUY ABOVE 585
3	LT	1418	1440	1455	1410	BUY ABOVE 1425
4	BAJFINANCE	5149	5085	5035	5185	SELL BELOW 5135
5	RELIANCE	2003	1980	1960	2020	SELL BELOW 2000

## DERIVATIVES

### INDICES SNAPSHOT

SCRIPS	CP AS ON 30/3/2021	CP AS ON 31/3/2021	Change (%)	OI AS ON 30/3/2021	OI AS ON 31/3/2021	Change (%)
BANKNIFTY	34046.8	33478.45	-1.67	3180500	3270550	2.83
FINNIFTY	16104.6	15796.8	-1.91	14120	16560	17.28
NIFTY	14913.55	14752.3	-1.08	12436350	12637500	1.62

### Derivative Highlights

- ⇒ Nifty Future closed with a Premium of 72 points v/s a Premium of 72 points in the previous session.
- ⇒ Nifty Future Open Interest Increased by 1.62%. Bank Nifty Future Open Interest Increased by 2.83%.
- ⇒ Nifty PCR - OI Decreased from 1.09 to 0.82, Nifty Bank PCR - OI Decreased from 0.97 to 0.78.
- ⇒ FII Sold Rs 1685.91 crore while DII Bought Rs 2081.52 crore in the Cash Segment. FII Sold Rs 2448.8 crore in Index Futures, Bought Rs 2522.84 crore in index options, while in Future they Sold Rs 635.77 crore and Sold Rs 31.2 in stock options.
- ⇒ Among Index Option space, Highest Open Interest concentration was seen in 14000 & 14500 Strike price among the PE options. Where as among CE Options Highest Open Interest Concentration was seen in 15000 & 15100 Strike price.
- ⇒ Highest Open Interest Build Up among the PE options was seen in 14350 & 14450 Strike price. Among CE options highest build up was seen in 15000 & 14700 Strike price.

#### OI Concentration

PUT OPTION		CALL OPTION	
Strike Price	Open Interest	Strike Price	Open Interest
14000	3786825	15000	6927300
14500	3645300	15100	3389550
14600	2866125	14800	3256725
14300	2622000	15500	3078600
14700	2426400	14900	2983425

#### Highest Change in OI

PUT OPTION		CALL OPTION	
Strike Price	Change in OI	Strike Price	Change in OI
14350	534825	15000	2675925
14450	420375	14700	1181325
14550	198825	14800	956850
14300	186750	14750	831000
14650	118200	14900	731550

#### MWPL

SCRIPS	OI %	BAN
SAIL	94%	YES
SUNTV	75%	NO
IBULHSGFIN	70%	NO
BANKBARODA	70%	NO
PNB	68%	NO
CANBK	66%	NO
TATAPOWER	60%	NO
BHEL	59%	NO
IDFCFIRSTB	56%	NO
NATIONALUM	54%	NO

# Technical Trend

## Stock Analysis

Long Build-up	Long Unwinding	Short Build-up	Short Covering
ACC	TATAPOWER	AARTIIND	ALKEM
BALKRISIND		BAJFINANCE	DIVISLAB
CANBK		EICHERMOT	HDFCAMC
COLPAL		HDFC	HINDPETRO
DLF		HDFCBANK	ITC
MGL		TRENT	PFIZER

## STATISTICS

### Highest Premium

SCRIPS	Premium %	Price change %

### Highest Discount

SCRIPS	Premium %	Price change %

### TOP 5 VOLUME GAINER FOR THE SESSION

SCRIPS	CP AS ON 30/3/2021	CP AS ON 31/3/2021	Change (%)	VOL AS ON 30/3/2021	VOL AS ON 31/3/2021	Change (%)
HINDPETRO	231.8	235.25	1.49	1414	4373	209.26
BALKRISIND	1668.4	1701.05	1.96	765	2318	203.01
IDFCFIRSTB	58.5	54.95	-6.07	2663	6621	148.63
MGL	1168.15	1172.3	0.36	622	1542	147.91
CHOLAFIN	553.25	560.6	1.33	1043	2161	107.19

### TOP 5 VOLUME LOSER FOR THE SESSION

SCRIPS	CP AS ON 30/3/2021	CP AS ON 31/3/2021	Change (%)	VOL AS ON 30/3/2021	VOL AS ON 31/3/2021	Change (%)
SAIL	79.6	79.65	0.06	5735	377	-93.43
TATACONSUM	631.45	641.45	1.58	9406	4598	-51.12
AUBANK	1273.2	1230.15	-3.38	6789	3349	-50.67
POWERGRID	223.2	217.2	-2.69	4908	2425	-50.59
PVR	1241.05	1226.65	-1.16	3861	1941	-49.73

## Technical Trend

### TOP 10 OPEN INTEREST GAINER FOR THE SESSION

SCRIPS	CP AS ON 30/3/2021	CP AS ON 31/3/2021	Change (%)	OI AS ON 30/3/2021	OI AS ON 31/3/2021	Change (%)
IDFCFIRSTB	58.5	54.95	-6.07	160664000	197448000	22.89
PEL	1778.95	1766.4	-0.71	3095950	3684450	19.01
LALPATHLAB	2621.3	2706.25	3.24	165500	195250	17.98
IDEA	9.3	9.4	1.08	505050000	592340000	17.28
FINNIFTY	16104.6	15796.8	-1.91	14120	16560	17.28
HDFCBANK	1549.95	1497	-3.42	25715250	29211600	13.60
HEROMOTOCO	2957.5	2932.25	-0.85	3957000	4447500	12.40
CUMMINSIND	887.85	906.7	2.12	1748400	1945200	11.26
TRENT	764.7	756.55	-1.07	845350	939600	11.15
AARTIIND	1349.4	1326.55	-1.69	415650	459850	10.63

### TOP 10 OPEN INTEREST LOSER FOR THE SESSION

SCRIPS	CP AS ON 30/3/2021	CP AS ON 31/3/2021	Change (%)	OI AS ON 30/3/2021	OI AS ON 31/3/2021	Change (%)
MINDTREE	2130.85	2090.55	-1.89	1959200	1760000	-10.17
LTTS	2655.75	2670.25	0.55	475000	430600	-9.35
HINDPETRO	231.8	235.25	1.49	27440100	25795800	-5.99
ALKEM	2751.65	2777.85	0.95	239200	225800	-5.60
GODREJPROP	1350.55	1410.55	4.44	1807650	1718600	-4.93
CIPLA	817.45	819.7	0.28	11498500	10999300	-4.34
APLLTD	964.1	968.5	0.46	790350	757900	-4.11
SAIL	79.6	79.65	0.06	160360000	154052000	-3.93
CADILAHC	437.2	443.45	1.43	10564400	10150800	-3.92
HDFCLIFE	689.95	698.3	1.21	8646000	8317100	-3.80

# Technical Trend

## Pivot Report– Nifty F&O

Symbol	Last Rate	Pivot	Support3	Support2	Support 1	Resist1	Resist2	Resist3
Aarti Industries Ltd.	1317.5	1324.8	1266.2	1288.2	1302.8	1339.4	1361.4	1376.0
ACC Ltd.	1903.3	1897.1	1820.5	1844.0	1873.6	1926.7	1950.2	1979.8
Adani Enterprises Ltd.	1031.2	1033.6	977.6	997.1	1014.1	1050.7	1070.2	1087.2
Adani Ports & Special Economic Zone Ltd.	702.4	707.0	672.7	685.7	694.0	715.3	728.3	736.6
Alembic Pharmaceuticals Ltd.	965.0	961.0	930.0	939.0	952.0	973.9	982.9	995.9
Alkem Laboratories Ltd.	2769.8	2762.9	2647.9	2683.9	2726.9	2805.9	2841.9	2884.9
Amara Raja Batteries Ltd.	853.8	857.8	828.8	839.8	846.8	864.8	875.8	882.8
Ambuja Cements Ltd.	308.9	306.3	289.6	294.3	301.6	313.5	318.2	325.5
Apollo Hospitals Enterprises Ltd.	2902.7	2904.2	2834.6	2858.3	2880.5	2926.4	2950.1	2972.3
Apollo Tyres Ltd.	223.7	224.0	213.7	217.2	220.5	227.2	230.7	234.0
Ashok Leyland Ltd.	113.5	114.0	108.7	110.6	112.1	115.5	117.4	118.9
Asian Paints Ltd.	2537.4	2550.5	2466.0	2498.5	2518.0	2569.9	2602.4	2621.9
Au Small Finance Bank Ltd.	1227.9	1242.5	1135.3	1175.9	1201.9	1268.5	1309.1	1335.1
Aurobindo Pharma Ltd.	881.3	877.3	850.0	857.7	869.5	889.1	896.8	908.6
Axis Bank Ltd.	697.5	697.7	680.4	686.3	691.9	703.3	709.2	714.8
Bajaj Auto Ltd.	3670.6	3655.4	3555.7	3583.9	3627.2	3698.8	3727.0	3770.3
Bajaj Finance	5149.9	5163.9	5013.1	5068.0	5108.9	5204.8	5259.7	5300.6
Bajaj Finserv Ltd.	9668.6	9611.4	9241.6	9345.8	9507.2	9772.8	9877.0	10038.4
Balkrishna Industries Ltd.	1688.5	1678.5	1592.0	1617.5	1653.0	1714.0	1739.5	1775.0
Bandhan Bank Ltd.	338.9	339.1	326.3	330.6	334.8	343.3	347.6	351.8
BANK NIFTY	33303.9	33409.6	32424.8	32788.3	33046.1	33667.4	34030.9	34288.7
Bank of Baroda	74.1	73.8	68.3	70.0	72.1	75.8	77.5	79.6
Bata India Ltd.	1406.2	1407.7	1375.5	1386.7	1396.5	1417.5	1428.7	1438.5
Berger Paints India Ltd.	765.0	766.1	746.3	753.2	759.1	772.0	778.9	784.8
Bharat Electronics Ltd.	125.1	125.5	121.6	123.0	124.1	126.6	128.0	129.1
Bharat Forge Ltd.	596.0	594.1	581.1	584.8	590.4	599.6	603.3	608.9
Bharat Heavy Electricals Ltd.	48.8	49.0	46.8	47.6	48.2	49.5	50.3	50.9
Bharat Petroleum Corporation Ltd.	428.0	428.2	419.6	422.6	425.3	430.9	433.9	436.6
Bharti Airtel Ltd.	517.3	519.8	504.1	510.2	513.7	523.4	529.5	533.0
Biocon Ltd.	408.9	409.4	397.7	401.8	405.3	412.9	417.0	420.5
Bosch Ltd.	14088.4	14155.8	13643.6	13836.8	13962.6	14281.6	14474.8	14600.6
Britannia Industries Ltd.	3625.1	3624.2	3530.9	3561.7	3593.4	3655.9	3686.7	3718.4
Cadila Healthcare Ltd.	440.9	440.3	419.1	426.0	433.4	447.8	454.7	462.1
Canara Bank	152.2	151.0	136.7	141.1	146.6	156.6	161.0	166.5
Cholamandalam Investment and Finance Company	558.8	556.9	530.9	538.9	548.9	566.9	574.9	584.9
Cipla Ltd.	815.1	814.7	786.5	795.7	805.4	824.4	833.6	843.3
City Union Bank Ltd.	156.0	156.9	148.4	151.5	153.7	159.1	162.2	164.4
Coal India Ltd	130.4	131.1	126.2	128.1	129.2	132.2	134.1	135.2
Coforge Ltd.	2927.0	2916.0	2815.0	2845.0	2886.0	2957.0	2987.0	3028.0
Colgate Palmolive (India) Ltd.	1559.4	1558.6	1514.4	1528.9	1544.1	1573.8	1588.3	1603.5
Container Corporation of India Ltd.	598.0	600.8	559.7	574.3	586.2	612.6	627.2	639.1
Cummins India Ltd.	919.7	910.5	857.8	872.3	896.0	934.2	948.7	972.4
Dabur India Ltd.	540.5	540.0	531.0	533.8	537.2	543.3	546.1	549.5
Deepak Nitrite	1656.5	1647.2	1583.6	1601.7	1629.1	1674.6	1692.7	1720.1
Divi's Laboratories Ltd.	3622.8	3614.8	3529.3	3555.2	3589.0	3648.6	3674.5	3708.3
DLF Ltd.	287.1	283.2	263.7	268.9	278.0	292.3	297.5	306.6
Dr. Lal Pathlabs Ltd.	2707.1	2685.8	2513.7	2564.0	2635.5	2757.3	2807.6	2879.1
Dr. Reddy's Laboratories Ltd.	4516.0	4514.6	4416.7	4448.9	4482.4	4548.1	4580.3	4613.8
Eicher Motors Ltd.	2604.0	2610.9	2504.5	2542.3	2573.1	2641.7	2679.5	2710.3
Escorts Ltd.	1287.8	1283.3	1242.7	1254.7	1271.3	1299.9	1311.9	1328.5
Exide Industries Ltd.	183.6	184.9	177.1	180.1	181.9	186.7	189.7	191.5

# Technical Trend

Symbol	Last Rate	Pivot	Support3	Support2	Support 1	Resist1	Resist2	Resist3
Federal Bank Ltd.	75.8	76.1	73.4	74.4	75.1	76.8	77.8	78.5
GAIL (India) Ltd.	135.5	135.5	128.6	130.9	133.2	137.8	140.1	142.4
Glenmark Pharmaceuticals Ltd.	464.7	465.9	451.6	456.8	460.7	469.8	475.0	478.9
GMR Infrastructure Ltd.	24.3	24.4	23.6	23.9	24.1	24.6	24.9	25.1
Godrej Consumer Products Ltd.	729.7	727.4	703.6	710.8	720.2	736.9	744.1	753.5
Godrej Properties Ltd.	1406.8	1388.0	1282.1	1311.1	1358.9	1435.8	1464.8	1512.6
Granules India	303.5	306.8	285.6	293.8	298.6	311.7	319.9	324.7
Grasim Industries Ltd.	1450.6	1438.9	1375.7	1392.9	1421.7	1467.7	1484.9	1513.7
Gujarat Gas Co. Ltd.	549.5	545.2	514.3	523.2	536.3	558.3	567.2	580.3
Havell's India Ltd.	1050.4	1056.1	1021.4	1034.8	1042.6	1063.9	1077.3	1085.1
HCL Technologies Ltd.	982.7	987.1	952.9	965.8	974.2	995.6	1008.5	1016.9
HDFC Asset Management Company Ltd.	2919.0	2922.7	2772.3	2823.7	2871.3	2970.3	3021.7	3069.3
HDFC Bank Ltd.	1493.7	1509.9	1411.8	1449.9	1471.8	1531.8	1569.9	1591.8
HDFC Life Insurance Company Ltd.	696.2	691.7	668.7	674.9	685.5	702.3	708.5	719.1
Hero MotoCorp Ltd.	2913.6	2925.9	2829.7	2865.9	2889.7	2949.7	2985.9	3009.7
Hindalco Industries Ltd.	326.9	327.9	304.7	312.8	319.8	334.9	343.0	350.0
Hindustan Petroleum Corporation Ltd.	234.5	233.1	222.5	225.5	230.0	237.6	240.6	245.1
Hindustan Unilever Ltd.	2431.5	2417.3	2339.0	2360.3	2395.9	2452.9	2474.2	2509.8
Housing Development Finance	2498.1	2529.2	2349.3	2419.6	2458.9	2568.5	2638.8	2678.1
I T C Ltd.	218.5	216.8	207.8	210.2	214.4	221.0	223.4	227.6
ICICI Bank Ltd.	582.1	583.6	566.9	572.9	577.5	588.2	594.2	598.8
ICICI Lombard General Insurance Company Ltd.	1433.2	1433.4	1390.0	1404.5	1418.9	1447.7	1462.2	1476.6
ICICI Prudential Life Insurance	445.6	442.0	418.5	425.1	435.4	452.3	458.9	469.2
IDFC First Bank Ltd.	55.7	56.9	49.8	52.6	54.1	58.4	61.2	62.7
Indiabulls Housing Finance	196.5	197.0	184.8	189.0	192.8	200.7	204.9	208.7
Indian Oil Corporation Ltd.	91.9	91.7	89.8	90.4	91.1	92.5	93.1	93.8
Indian Railway Catering & Tourism	1757.0	1755.7	1696.4	1715.7	1736.4	1776.3	1795.6	1816.3
Indraprastha Gas Ltd.	512.4	515.2	488.7	498.5	505.4	522.1	531.9	538.8
Indus Towers Ltd.	245.0	248.1	228.3	235.9	240.5	252.6	260.2	264.8
IndusInd Bank Ltd.	954.5	957.8	927.6	938.8	946.6	965.6	976.8	984.6
Info Edge (India) Ltd.	4280.6	4305.7	4088.2	4169.1	4224.8	4361.5	4442.4	4498.1
Infosys Ltd.	1368.1	1373.1	1333.5	1348.4	1358.2	1382.9	1397.8	1407.6
Interglobe Aviation	1632.0	1622.3	1514.3	1547.1	1589.5	1664.7	1697.5	1739.9
Jindal Steel & Power Ltd.	343.6	341.7	322.4	328.2	335.9	349.4	355.2	362.9
JSW Steel Ltd.	468.5	467.9	449.4	455.4	461.9	474.4	480.4	486.9
Jubilant Foodworks Limited	2911.0	2942.5	2726.7	2809.2	2860.1	2993.4	3075.9	3126.8
Kotak Mahindra Bank Ltd.	1753.0	1758.2	1701.0	1721.8	1737.4	1773.8	1794.6	1810.2
L&T Finance Holdings Ltd.	95.9	96.0	92.6	93.8	94.8	97.0	98.2	99.2
L&T Technology Services	2653.9	2668.1	2526.5	2578.4	2616.2	2705.8	2757.7	2795.5
Larsen & Toubro Infotech	4054.3	4084.0	3840.8	3931.8	3993.0	4145.3	4236.3	4297.5
Larsen & Toubro Ltd.	1418.9	1420.3	1387.8	1399.1	1409.0	1430.2	1441.5	1451.4
LIC Housing Finance Ltd.	428.2	426.9	409.0	414.6	421.4	433.7	439.3	446.1
Lupin Ltd.	1020.5	1016.5	989.3	997.0	1008.7	1028.2	1035.9	1047.6
Mahanagar Gas Ltd	1169.0	1176.6	1114.4	1137.7	1153.3	1192.3	1215.6	1231.2
Mahindra & Mahindra Financial	199.0	197.7	190.1	192.2	195.6	201.1	203.2	206.6
Mahindra & Mahindra Ltd.	795.3	797.0	772.7	781.4	788.3	804.0	812.7	819.6
Manappuram Finance Limited	149.2	150.1	144.1	146.4	147.8	151.5	153.8	155.2
Marico Ltd.	411.3	410.2	402.5	404.7	408.0	413.5	415.7	419.0
Maruti Suzuki India Ltd.	6859.2	6864.8	6644.9	6720.1	6789.6	6934.3	7009.5	7079.0
Max Financial Services Ltd.	859.5	863.6	827.0	840.6	850.0	873.0	886.6	896.0

# Technical Trend

Symbol	Last Rate	Pivot	Support3	Support2	Support 1	Resist1	Resist2	Resist3
Motherson Sumi Systems Ltd.	201.5	201.9	195.8	198.0	199.7	203.6	205.8	207.5
MphasiS Ltd.	1776.5	1766.3	1621.4	1666.3	1721.4	1821.4	1866.3	1921.4
MRF Ltd.	82259.5	82578.4	80055.3	81002.6	81631.1	83206.9	84154.2	84782.7
Muthoot Finance	1205.9	1210.7	1159.4	1178.1	1192.0	1224.6	1243.3	1257.2
National Aluminium Co. Ltd.	54.1	54.3	51.5	52.5	53.3	55.1	56.1	56.9
Navin Fluorine International Ltd.	2755.0	2732.2	2505.9	2573.7	2664.4	2822.8	2890.6	2981.3
Nestle India Ltd.	17165.2	17138.6	16630.8	16791.2	16978.2	17325.6	17486.0	17673.0
Nippon Life India Asset Management Ltd.	338.3	337.1	324.4	328.3	333.3	342.1	346.0	351.0
NMDC Ltd.	135.4	135.0	127.3	129.7	132.5	137.8	140.2	143.0
NTPC Ltd.	106.6	107.2	102.5	104.3	105.4	108.3	110.1	111.2
Oil & Natural Gas Corporation Ltd.	102.2	102.8	99.0	100.5	101.3	103.6	105.1	105.9
Page Industries	30317.4	30465.8	29161.6	29645.8	29981.6	30801.6	31285.8	31621.6
Petronet LNG Ltd.	224.7	226.0	217.3	220.7	222.7	228.0	231.4	233.4
Pfizer Ltd.	4524.9	4500.4	4371.9	4406.6	4465.7	4559.5	4594.2	4653.3
PI Industries Limited	2258.2	2262.1	2152.1	2190.1	2224.1	2296.1	2334.1	2368.1
Pidilite Industries Ltd.	1809.4	1815.3	1760.6	1780.8	1795.1	1829.6	1849.8	1864.1
Piramal Enterprises	1753.2	1782.8	1600.3	1671.0	1712.1	1823.9	1894.6	1935.7
Power Finance Corporation Ltd.	113.8	113.3	108.0	109.6	111.7	115.3	116.9	119.0
Power Grid Corporation of India Ltd.	215.7	217.1	206.7	210.7	213.2	219.6	223.6	226.1
Punjab National Bank	36.7	36.7	33.8	34.8	35.7	37.6	38.6	39.5
PVR Limited	1226.2	1224.7	1177.4	1192.7	1209.4	1241.4	1256.7	1273.4
RBL Bank	207.6	207.2	197.5	200.6	204.1	210.7	213.8	217.3
REC Ltd.	131.2	130.7	125.6	127.2	129.2	132.7	134.3	136.3
Reliance Industries Ltd.	2003.1	2017.3	1933.9	1966.4	1984.8	2035.7	2068.2	2086.6
S&P CNX NIFTY	14690.7	14724.9	14492.4	14581.3	14636.0	14779.6	14868.5	14923.2
SBI Life Insurance Company Ltd.	880.9	880.9	851.0	861.0	870.9	890.9	900.9	910.8
Shree Cement Ltd.	29465.4	29293.8	28023.6	28389.8	28927.6	29831.6	30197.8	30735.6
Shriram Transport Finance Co. Ltd.	1422.3	1426.7	1381.3	1397.9	1410.1	1438.9	1455.5	1467.7
Siemens Ltd.	1844.0	1844.8	1799.8	1815.0	1829.5	1859.3	1874.5	1889.0
SRF Ltd.	5410.8	5397.4	5226.0	5278.7	5344.7	5463.4	5516.1	5582.1
State Bank of India	364.3	363.4	349.0	353.5	358.9	368.8	373.3	378.7
Steel Authority of India Ltd.	78.8	79.0	75.7	76.8	77.8	80.0	81.1	82.1
Sun Pharmaceutical Industries Ltd.	597.8	599.8	583.4	589.5	593.7	604.0	610.1	614.3
Sun TV Network Ltd.	470.3	468.5	445.5	452.6	461.4	477.3	484.4	493.2
Tata Chemicals Ltd.	751.8	753.6	721.0	732.4	742.1	763.3	774.7	784.4
Tata Consultancy Services Ltd.	3177.9	3171.6	3065.2	3098.6	3138.2	3211.2	3244.6	3284.2
Tata Consumer Products Ltd.	638.9	638.2	615.0	622.5	630.7	646.4	653.9	662.1
Tata Motors Ltd.	301.8	302.3	287.0	292.3	297.0	307.0	312.3	317.0
Tata Power Co. Ltd.	103.3	104.0	99.1	101.0	102.1	105.1	107.0	108.1
Tata Steel Ltd.	811.9	808.5	760.1	775.1	793.5	826.9	841.9	860.3
Tech Mahindra Ltd.	991.5	1001.2	945.6	967.4	979.4	1013.2	1035.0	1047.0
The Ramco Cements Ltd.	1002.6	998.6	969.2	977.7	990.1	1011.0	1019.5	1031.9
Titan Company Ltd.	1558.1	1554.1	1510.1	1523.4	1540.7	1571.4	1584.7	1602.0
Torrent Pharmaceuticals Ltd.	2545.1	2533.2	2450.0	2473.8	2509.4	2568.8	2592.6	2628.2
Torrent Power Ltd.	423.8	424.5	410.3	415.3	419.5	428.7	433.7	437.9
Trent Ltd.	751.1	757.0	715.3	731.2	741.1	766.9	782.8	792.7
TVS Motor Company Ltd.	585.1	582.1	558.2	565.2	575.1	592.0	599.0	608.9
UltraTech Cement Ltd.	6738.0	6769.4	6540.1	6627.0	6682.5	6824.8	6911.7	6967.2
United Breweries Ltd.	1241.5	1238.6	1197.0	1209.9	1225.7	1254.4	1267.3	1283.1
United Spirits Ltd.	556.4	555.0	540.0	544.5	550.4	560.9	565.4	571.3
UPL Ltd.	641.9	638.7	589.4	604.8	623.3	657.2	672.6	691.1
Vedanta Ltd	228.8	229.2	225.2	226.7	227.7	230.3	231.8	232.8
Vodafone Idea Ltd.	9.3	9.4	8.3	8.7	9.0	9.7	10.1	10.4
Voltas Ltd.	1002.0	1001.0	970.1	980.1	991.0	1012.0	1022.0	1032.9
Wipro Ltd.	414.2	415.8	405.3	409.3	411.7	418.2	422.2	424.6
Zee Entertainment Enterprises Ltd.	203.2	202.2	194.2	196.6	199.9	205.5	207.9	211.2



**Disclaimer Appendix****Analyst s holding in the Stock : Nil****Analyst s Certification:**

We analysts and the authors of this report, hereby certify that all of the views expressed in this research report accurately reflect our personal views about any and all of the subject issuer s or securities. We also certify that no part of our compensation was, is, or will be directly or indirectly related to the specific recommendation s or view s in this report. Analysts aren't registered as research analysts by FINRA and might not be an associated person of the BP Equities Pvt. Ltd. Institutional Equities.

**General Disclaimer**

This report has been prepared by the research department of BP EQUITIES Pvt. Ltd, is for information purposes only. This report is not construed as an offer to sell or the solicitation of an offer to buy or sell any security in any jurisdiction where such an offer or solicitation would be illegal.

BP EQUITIES Pvt. Ltd have exercised due diligence in checking the correctness and authenticity of the information contained herein, so far as it relates to current and historical information, but do not guarantee its accuracy or completeness. The opinions expressed are our current opinions as of the date appearing in the material and may be subject to change from time to time. Prospective investors are cautioned that any forward looking statement are not predictions and are subject to change without prior notice.

Recipients of this material should rely on their own investigations and take their own professional advice. BP EQUITIES Pvt. Ltd or any of its affiliates or employees shall not be in any way responsible for any loss or damage that may arise to any person from any inadvertent error in the information contained in this report. BP EQUITIES Pvt. Ltd. or any of its affiliates or employees do not provide, at any time, any express or implied warranty of any kind, regarding any matter pertaining to this report, including without limitation the implied warranties of merchantability, fitness for a particular purpose, and non-infringement. The recipients of this report should rely on their own investigations.

BP EQUITIES Pvt. Ltd and/or its affiliates and/or employees may have interests/ positions, financial or otherwise in the securities mentioned in this report. Opinions expressed are our current opinions as of the date appearing on this material only. While we endeavor to update on a reasonable basis the information discussed in this material, there may be regulatory, compliance, or other reasons that prevent us from doing so.

This report is not directed to or intended for display, downloading, printing, reproducing or for distribution to or use by any person in any locality, state and country or other jurisdiction where such distribution, publication or use would be contrary to the law or regulation or would subject to BP EQUITIES Pvt. Ltd or any of its affiliates to any registration or licensing requirement within such jurisdiction.

**Corporate Office:**

4th floor,  
Rustom Bldg,  
29, Veer Nariman Road, Fort,  
Mumbai-400001  
Phone- +91 22 6159 6464  
Fax-+91 22 6159 6160  
Website- [www.bpwealth.com](http://www.bpwealth.com)

**Registered Office:**

24/26, 1st Floor, Cama Building,  
Dalal street, Fort,  
Mumbai-400001  
BP Equities Pvt. Ltd.  
CIN No: U67120MH1997PTC107392