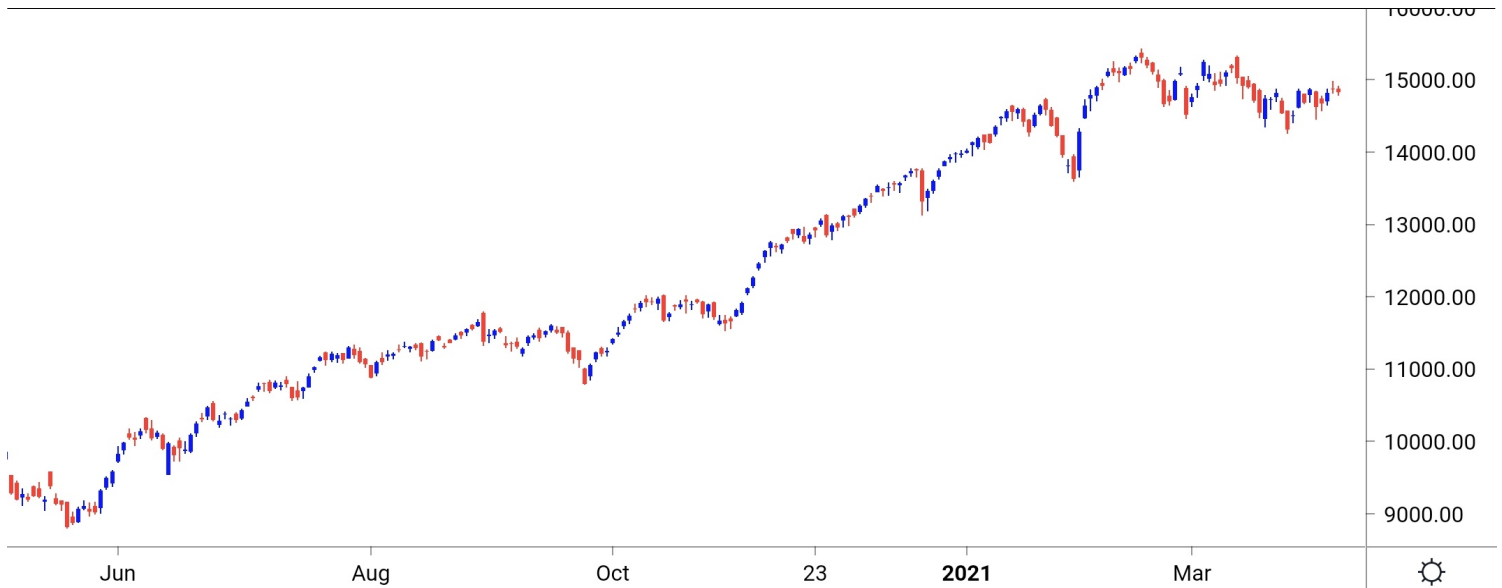


NIFTY SPOT : IMMEDIATE SUPPORT AT 14600-14530



Source: Falcon, BP Equities Research

Nifty spot closed 0.26% lower at 14834. Index opened on a flat note and traded in a narrow range throughout the day closing session with minor loss. Following SGX Nifty, it is expected Nifty to open 200-250 lower. Post gap down opening support is seen around 14600-14530-14450. While resistance is seen around 14780-14850-14900.

Intraday Nifty

Resistance - 14780-14850-14900

Support - 14600-14530-14450

BANK NIFTY SPOT : IMMEDIATE SUPPORT AT 32000-31800



Source: Falcon, BP Equities Research

Bank Nifty spot closed 1.02% lower at 32448. Banknifty opened with minor gap down and remained volatile throughout the day closing session with minor loss. Post gap down opening support is seen around 32000-31800-31500. While on the opposite side resistance comes at 32300-32450-32600.

Intraday Bank Nifty

Resistance - 32300-32450-32600

Support - 32000-31800-31500

Technical Trend

INTRADAY TRADER'S PICKS

Sr.No.	STOCK	CLOSE	Target 1	Target 2	Stop Loss	RECOMMENDATION
1	KOTAKBANK	1799	1825	1845	1785	BUY ABOVE 1805
2	HINDUNILVR	2476	2510	2535	2460	BUY ABOVE 2485
3	ASIANPAINT	2630	2665	2690	2615	BUY ABOVE 2640
4	ICICIBANK	566	556	548	572	SELL BELOW 564
5	RELIANCE	1982	1955	1935	1995	SELL BELOW 1975

DERIVATIVES

INDICES SNAPSHOT

SCRIPS	CP AS ON 8/4/2021	CP AS ON 9/4/2021	Change (%)	OI AS ON 8/4/2021	OI AS ON 9/4/2021	Change (%)
BANKNIFTY	32945.7	32617.55	-1.00	1846400	1882325	1.95
FINNIFTY	15600.85	15489.45	-0.71	18520	17400	-6.05
NIFTY	14924.4	14889.4	-0.23	11524875	12422175	7.79

Derivative Highlights

- ⇒ Nifty Future closed with a Premium of 59 points v/s a Premium of 65 points in the previous session.
- ⇒ Nifty Future Open Interest Increased by 7.79%. Bank Nifty Future Open Interest Increased by 1.95%.
- ⇒ Nifty PCR - OI Decreased from 0.87 to 0.85, Nifty Bank PCR - OI Decreased from 0.69 to 0.66.
- ⇒ FII Sold Rs 653.51 crore while DII Sold Rs 271.26 crore in the Cash Segment. FII Sold Rs 639.48 crore in Index Futures, Bought Rs 1538.38 crore in index options, while in Future they Sold Rs 666.24 crore and Sold Rs 154.07 in stock options.
- ⇒ Among Index Option space, Highest Open Interest concentration was seen in 13500 & 14500 Strike price among the PE options. Where as among CE Options Highest Open Interest Concentration was seen in 15500 & 15000 Strike price.
- ⇒ Highest Open Interest Build Up among the PE options was seen in 13700 & 14800 Strike price. Among CE options highest build up was seen in 15500 & 15000 Strike price.

OI Concentration

PUT OPTION		CALL OPTION	
Strike Price	Open Interest	Strike Price	Open Interest
13500	2107200	15500	3267600
14500	2094450	15000	3230550
14000	1886925	15200	2473425
14800	1875525	15300	2329350
14200	1811250	15100	1959375

Highest Change in OI

PUT OPTION		CALL OPTION	
Strike Price	Change in OI	Strike Price	Change in OI
13700	1087200	15500	1277100
14800	919125	15000	1226250
14200	884025	15100	891675
14500	818025	15300	836100
14600	694875	15400	814425

MWPL

SCRIPS	OI %	BAN
SUNTV	88%	NO
SAIL	87%	YES
IBULHSGFIN	86%	NO
CANBK	78%	NO
BHEL	75%	NO
TATACHEM	72%	NO
NATIONALUM	71%	NO
PNB	71%	NO
TATAPOWER	70%	NO
ADANI PORTS	68%	NO

Technical Trend

Stock Analysis

Long Build-up	Long Unwinding	Short Build-up	Short Covering
ALKEM	ACC	AMBUJACEM	ADANIENT
APLLTD	ASIANPAINT	AUBANK	DABUR
BIOCON	BAJAJ-AUTO	BHARATFORG	GAIL
CADILAHC	CUMMINSIND	DLF	HDFC
GLENMARK	EICHERMOT	HDFCBANK	IGL
LUPIN	NESTLEIND	LT	MARICO

STATISTICS

Highest Premium

SCRIPS	Premium %	Price change %
IDEA	1.06	0.00
JINDALSTEL	0.78	-0.79
ALKEM	0.74	4.65
APLLTD	0.73	4.21
GRANULES	0.72	2.49

Highest Discount

SCRIPS	Premium %	Price change %
NESTLEIND	-0.51	-0.55
MUTHOOTFIN	-0.31	-0.25
INDIGO	-0.28	0.38

TOP 5 VOLUME GAINER FOR THE SESSION

SCRIPS	CP AS ON 8/4/2021	CP AS ON 9/4/2021	Change (%)	VOL AS ON 8/4/2021	VOL AS ON 9/4/2021	Change (%)
ALKEM	2723.35	2853.2	4.77	335	2358	603.88
CIPLA	846.45	889.15	5.04	2114	9711	359.37
CADILAHC	473.65	517.35	9.23	2908	11933	310.35
PFIZER	4644	4832	4.05	216	878	306.48
SUNPHARMA	617.8	640.6	3.69	4733	15739	232.54

TOP 5 VOLUME LOSER FOR THE SESSION

SCRIPS	CP AS ON 8/4/2021	CP AS ON 9/4/2021	Change (%)	VOL AS ON 8/4/2021	VOL AS ON 9/4/2021	Change (%)
GODREJCP	741.95	743.65	0.23	2226	678	-69.54
SAIL	95.7	94.8	-0.94	510	166	-67.45
NAM-INDIA	360.55	353.45	-1.97	1799	635	-64.70
INDUSTOWER	265.3	258.45	-2.58	2342	918	-60.80
NAUKRI	4858.55	4825.15	-0.69	4153	1748	-57.91

Technical Trend

TOP 10 OPEN INTEREST GAINER FOR THE SESSION

SCRIPS	CP AS ON 8/4/2021	CP AS ON 9/4/2021	Change (%)	OI AS ON 8/4/2021	OI AS ON 9/4/2021	Change (%)
ALKEM	2723.35	2853.2	4.77	225200	311600	38.37
PFIZER	4644	4832	4.05	75625	91375	20.83
APLLTD	979.45	1021.2	4.26	930600	1103850	18.62
GLENMARK	508.4	533.3	4.90	7831500	9234500	17.91
SIEMENS	1852.95	1858.35	0.29	813450	933900	14.81
CADILAHC	473.65	517.35	9.23	10443400	11948200	14.41
SHREECEM	31619.45	31794.1	0.55	154800	175650	13.47
LTI	4344.3	4405.25	1.40	412950	465600	12.75
LUPIN	1052.45	1086.05	3.19	6689500	7488500	11.94
BAJFINANCE	5061.2	4904.05	-3.10	3650250	4073250	11.59

TOP 10 OPEN INTEREST LOSER FOR THE SESSION

SCRIPS	CP AS ON 8/4/2021	CP AS ON 9/4/2021	Change (%)	OI AS ON 8/4/2021	OI AS ON 9/4/2021	Change (%)
AARTIIND	1425.2	1406.3	-1.33	553775	494700	-10.67
NAM-INDIA	360.55	353.45	-1.97	1499200	1344000	-10.35
HINDALCO	366.6	361.95	-1.27	32972400	30168800	-8.50
COFORGE	3100.15	3176.25	2.45	754125	698625	-7.36
TECHM	1033.55	1055.8	2.15	14712000	13702800	-6.86
IDFCFIRSTB	56.65	55.9	-1.32	223174000	207936000	-6.83
FINNIFTY	15600.85	15489.45	-0.71	18520	17400	-6.05
ASHOKLEY	123.1	121.55	-1.26	44478000	41841000	-5.93
M&MFIN	195.55	193.8	-0.89	19444000	18312000	-5.82
ESCORTS	1274.5	1274.3	-0.02	2107600	2005850	-4.83

Technical Trend

Pivot Report– Nifty F&O

Symbol	Last Rate	Pivot	Support3	Support2	Support 1	Resist1	Resist2	Resist3
Aarti Industries Ltd.	1404.1	1409.3	1365.2	1381.6	1392.9	1420.5	1436.9	1448.2
ACC Ltd.	1960.8	1977.4	1857.5	1903.0	1931.9	2006.3	2051.8	2080.7
Adani Enterprises Ltd.	1201.4	1193.5	1082.3	1116.7	1159.1	1235.9	1270.3	1312.7
Adani Ports & Special Economic Zone Ltd.	823.6	825.9	794.8	805.9	814.8	834.7	845.8	854.7
Alembic Pharmaceuticals Ltd.	1014.0	1003.3	930.7	951.3	982.7	1034.7	1055.3	1086.7
Alkem Laboratories Ltd.	2832.3	2808.1	2562.2	2636.1	2734.2	2906.2	2980.1	3078.2
Amara Raja Batteries Ltd.	816.1	821.5	786.8	800.2	808.1	829.5	842.9	850.8
Ambuja Cements Ltd.	316.4	320.2	294.9	304.6	310.5	326.1	335.8	341.7
Apollo Hospitals Enterprises Ltd.	3132.2	3134.1	3045.7	3075.8	3104.0	3162.2	3192.3	3220.5
Apollo Tyres Ltd.	223.5	224.5	215.1	218.6	221.0	227.0	230.5	232.9
Ashok Leyland Ltd.	121.2	122.4	113.9	117.1	119.2	124.4	127.6	129.7
Asian Paints Ltd.	2630.8	2632.0	2564.1	2587.1	2609.0	2653.8	2676.8	2698.7
Au Small Finance Bank Ltd.	1174.5	1198.2	1066.4	1118.2	1146.4	1226.3	1278.1	1306.3
Aurobindo Pharma Ltd.	943.7	932.7	860.7	881.0	912.4	964.0	984.3	1015.7
Axis Bank Ltd.	668.2	674.0	641.4	654.2	661.2	681.0	693.8	700.8
Bajaj Auto Ltd.	3651.3	3656.8	3550.5	3587.8	3619.5	3688.5	3725.8	3757.5
Bajaj Finance	4872.3	4909.1	4643.2	4744.1	4808.2	4973.2	5074.1	5138.2
Bajaj Finserv Ltd.	9629.1	9635.0	9401.0	9481.0	9555.0	9709.0	9789.0	9863.0
Balkrishna Industries Ltd.	1651.8	1657.9	1612.9	1629.9	1640.9	1668.9	1685.9	1696.9
Bandhan Bank Ltd.	359.0	358.4	338.7	345.1	352.0	365.3	371.7	378.6
BANK NIFTY	32448.1	32583.4	31552.4	31941.2	32194.6	32836.8	33225.6	33479.0
Bank of Baroda	74.0	74.8	67.6	70.3	72.1	76.6	79.3	81.1
Bata India Ltd.	1391.2	1397.5	1362.3	1376.2	1383.7	1405.0	1418.9	1426.4
Berger Paints India Ltd.	752.6	757.4	726.6	738.5	745.5	764.4	776.3	783.3
Bharat Electronics Ltd.	129.9	130.2	126.2	127.6	128.8	131.3	132.7	133.9
Bharat Forge Ltd.	610.3	615.4	586.0	597.5	603.9	621.8	633.3	639.7
Bharat Heavy Electricals Ltd.	51.5	51.7	49.5	50.3	50.9	52.3	53.1	53.7
Bharat Petroleum Corporation Ltd.	425.6	427.5	414.9	419.7	422.7	430.4	435.2	438.2
Bharti Airtel Ltd.	545.3	543.8	524.7	530.6	537.9	551.2	557.1	564.4
Biocon Ltd.	420.3	419.0	401.3	406.8	413.5	425.7	431.2	437.9
Bosch Ltd.	14490.7	14566.9	13883.9	14137.0	14313.8	14743.7	14996.8	15173.6
Britannia Industries Ltd.	3797.7	3810.5	3723.5	3756.8	3777.2	3830.9	3864.2	3884.6
Cadila Healthcare Ltd.	514.5	501.3	439.0	455.4	484.9	530.9	547.3	576.8
Canara Bank	148.8	149.5	137.4	141.7	145.2	153.0	157.3	160.8
Cholamandalam Investment and Finance Company	557.9	560.2	533.3	543.0	550.5	567.7	577.4	584.9
Cipla Ltd.	883.1	870.7	793.4	815.0	849.0	904.7	926.3	960.3
City Union Bank Ltd.	165.6	165.7	157.7	160.4	163.0	168.3	171.0	173.6
Coal India Ltd	129.5	130.1	125.3	127.1	128.3	131.3	133.1	134.3
Coforge Ltd.	3167.9	3146.6	3019.5	3054.8	3111.3	3203.2	3238.5	3295.0
Colgate Palmolive (India) Ltd.	1601.2	1602.8	1561.4	1575.8	1588.5	1615.5	1629.9	1642.6
Container Corporation of India Ltd.	587.4	588.1	562.2	571.1	579.2	596.3	605.2	613.3
Cummins India Ltd.	871.0	875.8	832.4	848.5	859.7	887.1	903.2	914.4
Dabur India Ltd.	560.5	561.4	547.2	552.2	556.4	565.5	570.5	574.7
Deepak Nitrite	1681.3	1693.2	1613.7	1644.2	1662.7	1711.7	1742.2	1760.7
Divi's Laboratories Ltd.	3752.4	3738.3	3591.5	3635.8	3694.1	3796.6	3840.9	3899.2
DLF Ltd.	279.6	280.9	269.9	274.0	276.8	283.7	287.8	290.6
Dr. Lal Pathlabs Ltd.	3137.0	3163.7	2979.3	3049.7	3093.3	3207.3	3277.7	3321.3
Dr. Reddy's Laboratories Ltd.	4760.3	4748.5	4600.3	4645.8	4703.0	4805.8	4851.3	4908.5
Eicher Motors Ltd.	2521.6	2537.2	2439.4	2477.2	2499.4	2559.4	2597.2	2619.4
Escorts Ltd.	1267.8	1273.6	1233.1	1248.5	1258.2	1283.2	1298.6	1308.3
Exide Industries Ltd.	186.3	186.5	179.9	182.2	184.2	188.6	190.9	192.9

Technical Trend

Symbol	Last Rate	Pivot	Support3	Support2	Support 1	Resist1	Resist2	Resist3
Federal Bank Ltd.	77.7	78.1	74.7	75.9	76.8	79.0	80.2	81.1
GAIL (India) Ltd.	138.8	139.2	135.6	136.9	137.9	140.1	141.4	142.4
Glenmark Pharmaceuticals Ltd.	529.7	523.0	482.4	493.7	511.7	541.0	552.3	570.3
GMR Infrastructure Ltd.	24.9	24.7	23.6	23.9	24.4	25.2	25.5	26.0
Godrej Consumer Products Ltd.	739.1	740.3	725.3	730.7	734.9	744.5	749.9	754.1
Godrej Properties Ltd.	1362.1	1371.3	1304.0	1329.5	1345.8	1387.6	1413.1	1429.4
Granules India	341.3	339.3	323.0	327.8	334.5	346.0	350.8	357.5
Grasim Industries Ltd.	1440.0	1447.4	1389.0	1410.9	1425.5	1462.0	1483.9	1498.5
Gujarat Gas Co. Ltd.	568.4	564.9	514.5	530.1	549.3	584.0	599.6	618.8
Havell's India Ltd.	1062.3	1071.4	995.0	1023.5	1042.9	1090.8	1119.3	1138.7
HCL Technologies Ltd.	1045.4	1044.8	1014.1	1024.1	1034.8	1055.4	1065.4	1076.1
HDFC Asset Management Company Ltd.	2952.0	2981.2	2803.8	2872.7	2912.3	3020.8	3089.7	3129.3
HDFC Bank Ltd.	1421.8	1423.2	1395.9	1405.5	1413.6	1431.3	1440.9	1449.0
HDFC Life Insurance Company Ltd.	694.9	696.2	676.5	683.5	689.2	701.9	708.9	714.6
Hero MotoCorp Ltd.	2912.9	2920.7	2846.5	2873.8	2893.4	2940.2	2967.5	2987.1
Hindalco Industries Ltd.	361.1	361.9	338.5	346.6	353.8	369.1	377.2	384.4
Hindustan Petroleum Corporation Ltd.	234.1	234.9	224.3	228.1	231.1	237.9	241.7	244.7
Hindustan Unilever Ltd.	2476.0	2461.0	2380.0	2402.0	2439.0	2498.0	2520.0	2557.0
Housing Development Finance Corporation Ltd.	2513.9	2520.7	2421.8	2457.0	2485.5	2549.2	2584.4	2612.9
I T C Ltd.	213.1	213.9	208.4	210.5	211.8	215.2	217.3	218.6
ICICI Bank Ltd.	566.2	570.1	547.1	556.1	561.1	575.1	584.1	589.1
ICICI Lombard General Insurance Company Ltd.	1419.6	1423.1	1367.3	1387.1	1403.3	1439.4	1459.2	1475.4
ICICI Prudential Life Insurance Company	455.5	455.7	439.8	445.2	450.3	460.8	466.2	471.3
IDFC First Bank Ltd.	55.8	56.2	53.3	54.4	55.1	56.9	58.0	58.7
Indiabulls Housing Finance	192.3	192.3	182.2	185.6	188.9	195.6	199.0	202.3
Indian Oil Corporation Ltd.	91.7	92.0	89.4	90.3	91.0	92.7	93.6	94.3
Indian Railway Catering & Tourism Corp Ltd.	1730.9	1733.2	1674.0	1694.5	1712.7	1751.4	1771.9	1790.1
Indraprastha Gas Ltd.	542.5	538.5	515.1	521.6	532.0	548.9	555.4	565.8
Indus Towers Ltd.	256.8	259.9	239.2	247.2	252.0	264.7	272.7	277.5
IndusInd Bank Ltd.	923.7	926.9	891.9	904.7	914.2	936.4	949.2	958.7
Info Edge (India) Ltd.	4791.4	4799.7	4603.9	4671.9	4731.7	4859.5	4927.5	4987.3
Infosys Ltd.	1441.1	1442.0	1404.1	1417.1	1429.1	1454.0	1467.0	1479.0
Interglobe Aviation	1647.0	1639.6	1559.7	1583.9	1615.4	1671.1	1695.3	1726.8
Jindal Steel & Power Ltd.	412.4	413.4	375.7	388.6	400.5	425.2	438.1	450.0
JSW Steel Ltd.	621.0	616.6	569.5	583.8	602.4	635.2	649.5	668.1
Jubliant Foodworks Limited	2881.4	2883.5	2811.9	2836.5	2858.9	2905.9	2930.5	2952.9
Kotak Mahindra Bank Ltd.	1799.3	1783.3	1697.7	1720.9	1760.1	1822.4	1845.6	1884.8
L&T Finance Holdings Ltd.	98.1	98.4	95.0	96.2	97.1	99.3	100.5	101.4
L&T Technology Services	2911.9	2949.0	2646.7	2759.9	2835.9	3025.0	3138.2	3214.2
Larsen & Toubro Infotech	4378.6	4367.9	4110.7	4192.9	4285.7	4460.7	4542.9	4635.7
Larsen & Toubro Ltd.	1404.1	1406.1	1375.2	1386.2	1395.1	1415.0	1426.0	1434.9
LIC Housing Finance Ltd.	415.7	417.6	403.2	408.6	412.2	421.2	426.6	430.2
Lupin Ltd.	1079.5	1070.7	1013.2	1029.5	1054.5	1095.7	1112.0	1137.0
Mahanagar Gas Ltd	1135.9	1132.3	1090.8	1103.4	1119.7	1148.6	1161.2	1177.5
Mahindra & Mahindra Financial Services Ltd.	192.9	193.8	184.9	188.2	190.5	196.1	199.4	201.7
Mahindra & Mahindra Ltd.	791.2	792.4	767.8	776.4	783.8	799.8	808.4	815.8
Manappuram Finance Limited	157.1	158.0	151.7	154.1	155.6	159.5	161.9	163.4
Marico Ltd.	420.6	419.5	411.3	413.7	417.1	422.9	425.3	428.7
Maruti Suzuki India Ltd.	6827.1	6826.8	6681.1	6729.5	6778.3	6875.6	6924.0	6972.8
Max Financial Services Ltd.	886.2	889.3	849.6	863.9	875.0	900.5	914.8	925.9

Technical Trend

Symbol	Last Rate	Pivot	Support3	Support2	Support 1	Resist1	Resist2	Resist3
Motherson Sumi Systems Ltd.	211.9	213.7	199.0	204.5	208.2	217.4	222.9	226.6
MphasiS Ltd.	1802.5	1799.2	1718.4	1744.2	1773.3	1828.3	1854.1	1883.2
MRF Ltd.	81888.1	82308.5	79792.1	80771.0	81329.6	82867.1	83846.0	84404.6
Muthoot Finance	1233.9	1242.0	1181.2	1204.2	1219.0	1256.8	1279.8	1294.6
National Aluminium Co. Ltd.	59.4	59.9	55.8	57.4	58.4	60.9	62.5	63.5
Navin Fluorine International Ltd.	3069.5	3067.9	2969.5	3001.8	3035.6	3101.8	3134.1	3167.9
Nestle India Ltd.	17592.4	17647.1	17096.3	17298.1	17445.3	17794.3	17996.1	18143.3
Nippon Life India Asset Management Ltd.	352.7	354.4	336.3	342.9	347.8	359.3	365.9	370.8
NMDC Ltd.	145.3	144.7	139.7	141.2	143.2	146.8	148.3	150.3
NTPC Ltd.	102.8	103.7	97.9	100.2	101.5	105.0	107.3	108.6
Oil & Natural Gas Corporation Ltd.	103.8	103.9	101.0	102.0	102.9	104.8	105.8	106.7
Page Industries	29501.2	29573.9	28906.8	29153.4	29327.3	29747.8	29994.4	30168.3
Petronet LNG Ltd.	228.2	228.3	222.5	224.5	226.3	230.1	232.1	233.9
Pfizer Ltd.	4802.1	4735.7	4377.4	4474.7	4638.4	4899.3	4996.6	5160.3
PI Industries Limited	2558.7	2579.6	2332.4	2421.8	2490.2	2648.0	2737.4	2805.8
Pidilite Industries Ltd.	1919.8	1914.1	1865.4	1879.7	1899.8	1934.2	1948.5	1968.6
Piramal Enterprises	1809.2	1813.3	1710.3	1746.0	1777.6	1844.9	1880.6	1912.2
Power Finance Corporation Ltd.	113.9	114.6	108.9	111.0	112.5	116.1	118.2	119.7
Power Grid Corporation of India Ltd.	208.3	209.3	203.6	205.8	207.1	210.5	212.7	214.0
Punjab National Bank	37.9	38.0	35.2	36.2	37.0	38.8	39.8	40.6
PVR Limited	1148.7	1141.9	1100.4	1112.0	1130.3	1160.3	1171.9	1190.2
RBL Bank	211.1	211.9	201.6	205.3	208.2	214.8	218.5	221.4
REC Ltd.	132.1	132.2	128.3	129.6	130.9	133.5	134.8	136.1
Reliance Industries Ltd.	1982.1	1989.5	1946.2	1963.1	1972.6	1998.9	2015.8	2025.3
S&P CNX NIFTY	14834.8	14846.3	14641.4	14713.5	14774.2	14907.0	14979.1	15039.8
SBI Life Insurance Company Ltd.	910.1	908.8	885.8	893.0	901.6	917.3	924.5	933.1
Shree Cement Ltd.	31748.8	31619.6	30379.2	30749.6	31249.2	32119.2	32489.6	32989.2
Shriram Transport Finance Co. Ltd.	1469.6	1473.8	1409.0	1432.0	1450.8	1492.6	1515.6	1534.4
Siemens Ltd.	1849.0	1867.4	1752.2	1796.7	1822.9	1893.6	1938.1	1964.3
SRF Ltd.	6259.4	6258.4	5942.2	6047.3	6153.3	6364.5	6469.6	6575.6
State Bank of India	353.0	356.2	334.7	342.9	348.0	361.3	369.5	374.6
Steel Authority of India Ltd.	94.4	94.9	86.1	89.2	91.8	97.5	100.6	103.2
Sun Pharmaceutical Industries Ltd.	636.8	629.4	584.3	596.9	616.8	649.3	661.9	681.8
Sun TV Network Ltd.	493.5	490.5	467.9	474.4	483.9	500.0	506.5	516.0
Tata Chemicals Ltd.	805.3	811.1	766.4	783.3	794.3	822.1	839.0	850.0
Tata Consultancy Services Ltd.	3322.3	3328.2	3255.7	3281.9	3302.1	3348.4	3374.6	3394.8
Tata Consumer Products Ltd.	679.8	676.6	648.2	656.6	668.2	688.2	696.6	708.2
Tata Motors Ltd.	318.2	318.6	299.6	306.1	312.1	324.6	331.1	337.1
Tata Power Co. Ltd.	104.1	104.4	99.5	101.2	102.7	105.9	107.6	109.1
Tata Steel Ltd.	899.5	905.1	835.8	860.8	880.1	924.4	949.4	968.7
Tech Mahindra Ltd.	1053.0	1042.1	987.2	1001.9	1027.4	1067.7	1082.4	1107.9
The Ramco Cements Ltd.	1078.6	1083.4	1008.6	1035.2	1056.9	1105.1	1131.7	1153.4
Titan Company Ltd.	1592.0	1590.4	1506.2	1533.7	1562.9	1619.6	1647.1	1676.3
Torrent Pharmaceuticals Ltd.	2574.8	2571.1	2461.3	2496.7	2535.7	2610.1	2645.5	2684.5
Torrent Power Ltd.	422.4	422.1	410.8	414.5	418.4	426.0	429.7	433.6
Trent Ltd.	729.2	729.5	710.2	716.7	723.0	735.7	742.2	748.5
TVS Motor Company Ltd.	568.0	565.6	546.2	551.8	559.9	573.7	579.3	587.4
UltraTech Cement Ltd.	6825.9	6891.2	6462.4	6627.1	6726.5	6990.6	7155.3	7254.7
United Breweries Ltd.	1107.4	1110.1	1068.4	1083.2	1095.3	1122.2	1137.0	1149.1
United Spirits Ltd.	537.2	542.2	513.1	524.5	530.8	548.5	559.9	566.2
UPL Ltd.	634.9	640.5	599.8	615.2	625.1	650.4	665.8	675.7
Vedanta Ltd	231.4	233.7	212.7	220.5	225.9	239.1	246.9	252.3
Vodafone Idea Ltd.	9.4	9.5	9.0	9.2	9.3	9.6	9.8	9.9
Voltas Ltd.	1006.2	1011.8	972.6	987.6	996.9	1021.1	1036.1	1045.4
Wipro Ltd.	450.1	447.2	431.6	435.8	443.0	454.3	458.5	465.7
Zee Entertainment Enterprises Ltd	206.4	205.0	195.0	198.0	202.0	209.0	212.0	216.0

**Disclaimer Appendix****Analyst s holding in the Stock : Nil****Analyst s Certification:**

We analysts and the authors of this report, hereby certify that all of the views expressed in this research report accurately reflect our personal views about any and all of the subject issuer s or securities. We also certify that no part of our compensation was, is, or will be directly or indirectly related to the specific recommendation s or view s in this report. Analysts aren't registered as research analysts by FINRA and might not be an associated person of the BP Equities Pvt. Ltd. Institutional Equities.

General Disclaimer

This report has been prepared by the research department of BP EQUITIES Pvt. Ltd, is for information purposes only. This report is not construed as an offer to sell or the solicitation of an offer to buy or sell any security in any jurisdiction where such an offer or solicitation would be illegal.

BP EQUITIES Pvt. Ltd have exercised due diligence in checking the correctness and authenticity of the information contained herein, so far as it relates to current and historical information, but do not guarantee its accuracy or completeness. The opinions expressed are our current opinions as of the date appearing in the material and may be subject to change from time to time. Prospective investors are cautioned that any forward looking statement are not predictions and are subject to change without prior notice.

Recipients of this material should rely on their own investigations and take their own professional advice. BP EQUITIES Pvt. Ltd or any of its affiliates or employees shall not be in any way responsible for any loss or damage that may arise to any person from any inadvertent error in the information contained in this report. BP EQUITIES Pvt. Ltd. or any of its affiliates or employees do not provide, at any time, any express or implied warranty of any kind, regarding any matter pertaining to this report, including without limitation the implied warranties of merchantability, fitness for a particular purpose, and non-infringement. The recipients of this report should rely on their own investigations.

BP EQUITIES Pvt. Ltd and/or its affiliates and/or employees may have interests/ positions, financial or otherwise in the securities mentioned in this report. Opinions expressed are our current opinions as of the date appearing on this material only. While we endeavor to update on a reasonable basis the information discussed in this material, there may be regulatory, compliance, or other reasons that prevent us from doing so.

This report is not directed to or intended for display, downloading, printing, reproducing or for distribution to or use by any person in any locality, state and country or other jurisdiction where such distribution, publication or use would be contrary to the law or regulation or would subject to BP EQUITIES Pvt. Ltd or any of its affiliates to any registration or licensing requirement within such jurisdiction.

Corporate Office:

4th floor,
Rustom Bldg,
29, Veer Nariman Road, Fort,
Mumbai-400001
Phone- +91 22 6159 6464
Fax-+91 22 6159 6160
Website- www.bpwealth.com

Registered Office:

24/26, 1st Floor, Cama Building,
Dalal street, Fort,
Mumbai-400001
BP Equities Pvt. Ltd.
CIN No: U67120MH1997PTC107392