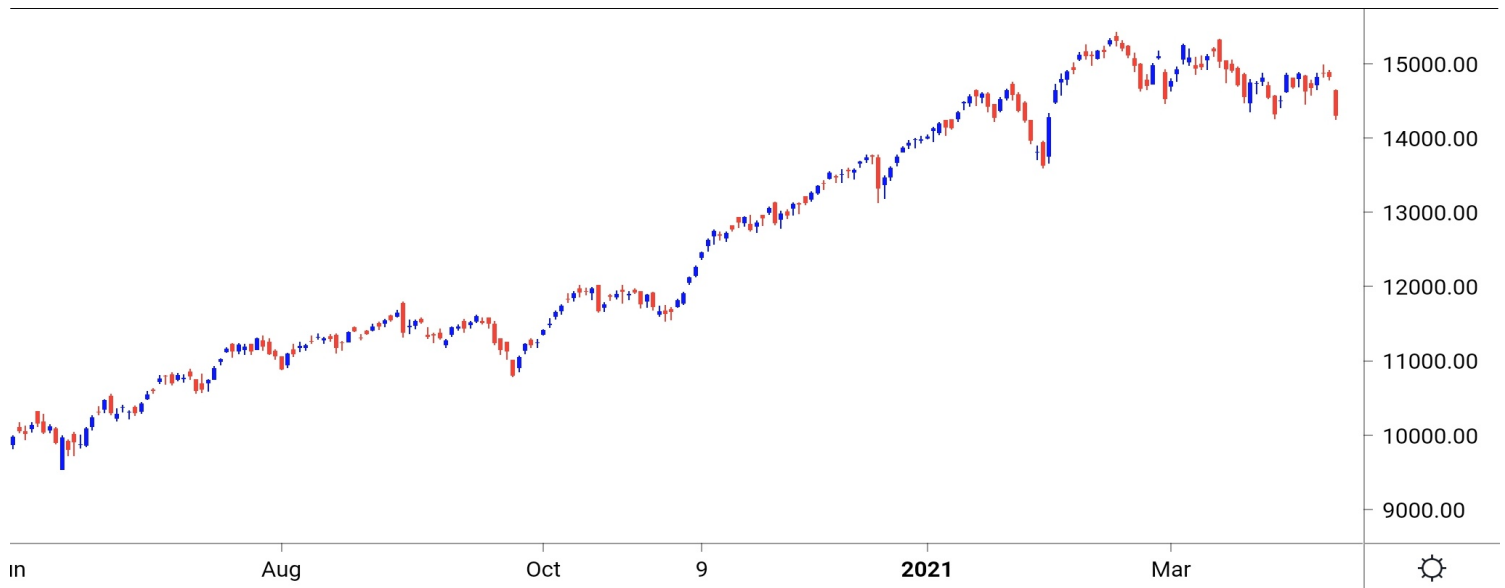


NIFTY SPOT : IMMEDIATE SUPPORT AT 14250-14150



Source: Falcon, BP Equities Research

Nifty spot closed 3.53% lower at 14310. Index opened with wide gap down and remained under pressure throughout the day closing session with hefty loss near days low. Index has surpassed its previous swing low but has closed above the same. Going ahead sustenance below 14250 will open the way for 14150-14050. On the upside resistance is seen at 14380-14450-14550.

Intraday Nifty

Resistance - 14380-14450-14550

Support - 14250-14150-14050

BANK NIFTY SPOT : IMMEDIATE SUPPORT AT 30500-30300



Source: Falcon, BP Equities Research

Bank Nifty spot closed 5.10% lower at 30792. Banknifty opened with wide gap down and remained under pressure throughout day closing session near days low with hefty loss. Going forward Banknifty has an immediate support around 30500-30300-30000. While on the higher side resistance is visible around 31000-31200-31500.

Intraday Bank Nifty

Resistance - 31000-31200-31500

Support - 30500-30300-30000

Technical Trend

INTRADAY TRADER'S PICKS

Sr.No.	STOCK	CLOSE	Target 1	Target 2	Stop Loss	RECOMMENDATION
1	ASIANPAINT	2602	2635	2660	2585	BUY ABOVE 2610
2	DRREDDY	4996	5060	5110	4960	BUY ABOVE 5010
3	BAJAJ-AUTO	3542	3585	3620	3515	BUY ABOVE 3550
4	ACC	1885	1860	1840	1900	SELL BELOW 1880
5	RELIANCE	1911	1885	1865	1925	SELL BELOW 1905

DERIVATIVES

INDICES SNAPSHOT

SCRIPS	CP AS ON 9/4/2021	CP AS ON 12/4/2021	Change (%)	OI AS ON 9/4/2021	OI AS ON 12/4/2021	Change (%)
BANKNIFTY	32617.55	30869.25	-5.36	1882325	1970400	4.68
FINNIFTY	15489.45	14748.4	-4.78	17400	21400	22.99
NIFTY	14889.4	14343.25	-3.67	12422175	12391500	-0.25

Derivative Highlights

- ⇒ Nifty Future closed with a Premium of 54 points v/s a Premium of 59 points in the previous session.
- ⇒ Nifty Future Open Interest Decreased by 0.25%. Bank Nifty Future Open Interest Increased by 4.68%.
- ⇒ Nifty PCR - OI Decreased from 0.85 to 0.48, Nifty Bank PCR - OI Decreased from 0.66 to 0.41.
- ⇒ FII Sold Rs 1746.43 crore while DII Bought Rs 232.76 crore in the Cash Segment. FII Sold Rs 1740.45 crore in Index Futures, Bought Rs 1954.08 crore in index options, while in Future they Sold Rs 397.99 crore and Sold Rs 575.14 in stock options.
- ⇒ Among Index Option space, Highest Open Interest concentration was seen in 14000 & 13500 Strike price among the PE options. Where as among CE Options Highest Open Interest Concentration was seen in 15000 & 15500 Strike price.
- ⇒ Highest Open Interest Build Up among the PE options was seen in 13000 & 12800 Strike price. Among CE options highest build up was seen in 14500 & 14600 Strike price.

OI Concentration

PUT OPTION		CALL OPTION	
Strike Price	Open Interest	Strike Price	Open Interest
14000	2421300	15000	5140575
13500	2411250	15500	3346275
13000	1923825	15100	3298725
14300	1710450	14500	3134325
14200	1522350	14900	2952600

Highest Change in OI

PUT OPTION		CALL OPTION	
Strike Price	Change in OI	Strike Price	Change in OI
13000	818700	14500	2916600
12800	592725	14600	2611875
13800	585675	14700	2420325
14000	534375	15000	1910025
14300	519000	14800	1702800

MWPL

SCRIPS	OI %	BAN
SUNTV	92%	NO
IBULHSGFIN	86%	NO
CANBK	82%	NO
SAIL	80%	YES
BHEL	77%	NO
PNB	76%	NO
TATAPOWER	76%	NO
TATACHEM	73%	NO
NATIONALUM	70%	NO
ADANI PORTS	69%	NO

Technical Trend

Stock Analysis

Long Build-up	Long Unwinding	Short Build-up	Short Covering
CIPLA	ADANI PORTS	APOLLOTYRE	BRITANNIA
DRREDDY	ASIANPAINT	ASHOKLEY	DIVISLAB
LALPATHLAB	BATAINDIA	BALKRISIND	
	ESCORTS	DABUR	
	IRCTC	DLF	
	PVR	INFY	

STATISTICS

Highest Premium

SCRIPS	Premium %	Price change %
ADANI PORTS	0.60	-9.59
IDEA	0.57	-6.91
TORNTPHARM	0.52	-0.74
DLF	0.51	-11.79
M&MFIN	0.50	-11.38

Highest Discount

SCRIPS	Premium %	Price change %
PVR	-1.46	-5.34
INDIGO	-1.38	-3.23
MUTHOOTFIN	-1.33	-5.99
UBL	-0.42	-2.10
GODREJPROP	-0.29	-6.80

TOP 5 VOLUME GAINER FOR THE SESSION

SCRIPS	CP AS ON 9/4/2021	CP AS ON 12/4/2021	Change (%)	VOL AS ON 9/4/2021	VOL AS ON 12/4/2021	Change (%)
SAIL	94.8	84.8	-10.55	166	569	242.77
IDEA	9.5	8.8	-7.37	1026	3499	241.03
GODREJCP	743.65	717.45	-3.52	678	1971	190.71
TATAPOWER	104.8	92.4	-11.83	3520	9778	177.78
RBLBANK	211.85	188.9	-10.83	3839	10641	177.18

TOP 5 VOLUME LOSER FOR THE SESSION

SCRIPS	CP AS ON 9/4/2021	CP AS ON 12/4/2021	Change (%)	VOL AS ON 9/4/2021	VOL AS ON 12/4/2021	Change (%)
RAMCOCEM	1082.1	1053.55	-2.64	2396	979	-59.14
SIEMENS	1858.35	1733.85	-6.70	2256	968	-57.09
LTTTS	2931.25	2835.7	-3.26	3180	1374	-56.79
GUJGASLTD	571.65	534.95	-6.42	1463	690	-52.84
LTI	4405.25	4266.55	-3.15	2364	1387	-41.33

Technical Trend

TOP 10 OPEN INTEREST GAINER FOR THE SESSION

SCRIPS	CP AS ON 9/4/2021	CP AS ON 12/4/2021	Change (%)	OI AS ON 9/4/2021	OI AS ON 12/4/2021	Change (%)
DRREDDY	4784.55	5010.35	4.72	3052125	3492625	14.43
CIPLA	889.15	906.85	1.99	11593400	12616500	8.82
LALPATHLAB	3149.7	3340.45	6.06	347250	372000	7.13
MINDTREE	2240.4	2152.7	-3.91	2084000	2232000	7.10
LUPIN	1086.05	1047.9	-3.51	7488500	7878650	5.21
MGL	1142.9	1085.3	-5.04	1564200	1644000	5.10
INDIGO	1642.15	1571.7	-4.29	4043500	4248000	5.06
BAJFINANCE	4904.05	4523.4	-7.76	4073250	4273250	4.91
CHOLAFIN	560.25	512.35	-8.55	5870000	6157500	4.90
APOLLOHOSP	3152.05	3016.95	-4.29	1904000	1994000	4.73

TOP 10 OPEN INTEREST LOSER FOR THE SESSION

SCRIPS	CP AS ON 9/4/2021	CP AS ON 12/4/2021	Change (%)	OI AS ON 9/4/2021	OI AS ON 12/4/2021	Change (%)
GUJGASLTD	571.65	534.95	-6.42	1203750	937500	-22.12
IRCTC	1736.35	1582.85	-8.84	1922050	1688700	-12.14
HDFCAMC	2971.7	2849.05	-4.13	681400	608200	-10.74
MPHASIS	1815.2	1745	-3.87	821275	733850	-10.65
AARTIIND	1406.3	1347.6	-4.17	494700	445400	-9.97
TECHM	1055.8	1041.2	-1.38	13702800	12529200	-8.56
SIEMENS	1858.35	1733.85	-6.70	933900	855250	-8.42
PIIND	2574	2467.4	-4.14	422500	387500	-8.28
SAIL	94.8	84.8	-10.55	131252000	120460000	-8.22
TRENT	733.05	711.75	-2.91	1278900	1173775	-8.22

Technical Trend

Pivot Report– Nifty F&O

Symbol	Last Rate	Pivot	Support3	Support2	Support 1	Resist1	Resist2	Resist3
Aarti Industries Ltd.	1347.6	1364.9	1233.3	1282.9	1315.3	1397.2	1446.8	1479.2
ACC Ltd.	1885.7	1893.7	1777.8	1819.1	1852.4	1927.0	1968.3	2001.6
Adani Enterprises Ltd.	1074.4	1104.4	915.4	988.4	1031.4	1147.4	1220.4	1263.4
Adani Ports & Special Economic Zone Ltd.	744.7	763.2	641.6	688.3	716.5	791.4	838.1	866.3
Alembic Pharmaceuticals Ltd.	960.5	979.9	866.4	910.7	935.6	1004.7	1049.0	1073.9
Alkem Laboratories Ltd.	2745.6	2785.2	2513.4	2617.2	2681.4	2849.4	2953.2	3017.4
Amara Raja Batteries Ltd.	799.5	802.8	772.9	784.0	791.7	810.5	821.6	829.3
Ambuja Cements Ltd.	304.3	305.4	285.9	292.7	298.5	311.2	318.0	323.8
Apollo Hospitals Enterprises Ltd.	3004.8	3034.3	2809.6	2894.3	2949.5	3089.5	3174.2	3229.4
Apollo Tyres Ltd.	203.5	208.6	180.0	191.2	197.4	214.8	226.0	232.2
Ashok Leyland Ltd.	112.2	113.4	102.9	106.8	109.5	116.1	120.0	122.7
Asian Paints Ltd.	2602.2	2589.1	2513.1	2534.1	2568.1	2623.1	2644.1	2678.1
Au Small Finance Bank Ltd.	1076.5	1085.0	889.4	957.4	1017.0	1144.5	1212.5	1272.1
Aurobindo Pharma Ltd.	915.2	923.5	854.5	880.2	897.7	941.0	966.7	984.2
Axis Bank Ltd.	635.6	639.1	594.8	610.7	623.2	651.5	667.4	679.9
Bajaj Auto Ltd.	3541.0	3540.0	3362.1	3421.1	3481.0	3600.0	3659.0	3718.9
Bajaj Finance	4511.0	4550.3	4020.7	4210.3	4360.7	4700.7	4890.3	5040.7
Bajaj Finserv Ltd.	9163.2	9219.6	8555.5	8795.7	8979.4	9403.4	9643.6	9827.3
Balkrishna Industries Ltd.	1606.2	1598.6	1473.9	1513.0	1559.6	1645.2	1684.3	1730.9
Bandhan Bank Ltd.	327.6	331.6	280.9	299.2	313.4	345.8	364.1	378.3
BANK NIFTY	30792.0	31003.5	29131.0	29825.7	30308.8	31486.6	32181.3	32664.4
Bank of Baroda	66.1	67.1	53.5	58.4	62.2	71.0	75.9	79.7
Bata India Ltd.	1305.9	1329.6	1187.3	1242.7	1274.3	1361.2	1416.6	1448.2
Berger Paints India Ltd.	728.2	729.6	679.2	696.5	712.3	745.5	762.8	778.6
Bharat Electronics Ltd.	121.9	123.6	110.8	115.6	118.8	126.8	131.6	134.8
Bharat Forge Ltd.	581.0	585.1	544.5	559.4	570.2	595.9	610.8	621.6
Bharat Heavy Electricals Ltd.	45.1	46.5	37.2	40.8	42.9	48.6	52.2	54.3
Bharat Petroleum Corporation Ltd.	404.0	408.5	380.1	391.1	397.5	414.9	425.9	432.3
Bharti Airtel Ltd.	522.5	526.6	494.0	506.3	514.4	534.7	547.0	555.1
Biocon Ltd.	404.3	408.6	377.2	389.1	396.7	416.2	428.1	435.7
Bosch Ltd.	13682.0	13894.2	12648.8	13134.7	13408.3	14167.8	14653.7	14927.3
Britannia Industries Ltd.	3812.8	3804.3	3658.5	3704.3	3758.5	3858.5	3904.3	3958.5
Cadila Healthcare Ltd.	499.7	508.7	447.7	471.0	485.4	523.0	546.3	560.7
Canara Bank	132.2	135.5	113.5	121.9	127.1	140.7	149.1	154.3
Cholamandalam Investment and Finance Company	510.9	519.9	453.4	478.6	494.7	536.0	561.2	577.3
Cipla Ltd.	902.4	907.2	813.5	846.3	874.4	935.2	968.0	996.1
City Union Bank Ltd.	159.6	160.2	149.9	153.5	156.6	163.2	166.8	169.9
Coal India Ltd	124.7	125.5	118.1	120.8	122.8	127.5	130.2	132.2
Coforge Ltd.	3118.3	3117.9	2884.9	2962.5	3040.4	3195.8	3273.4	3351.3
Colgate Palmolive (India) Ltd.	1559.2	1571.7	1493.5	1523.7	1541.5	1589.5	1619.7	1637.5
Container Corporation of India Ltd.	565.3	564.3	529.3	540.7	553.0	576.6	588.0	600.3
Cummins India Ltd.	818.5	833.8	743.8	778.9	798.7	853.6	888.7	908.5
Dabur India Ltd.	554.8	555.2	537.1	543.3	549.0	561.0	567.2	572.9
Deepak Nitrite	1582.8	1608.7	1450.8	1512.1	1547.4	1644.1	1705.4	1740.7
Divi's Laboratories Ltd.	3779.7	3784.3	3447.8	3561.5	3670.6	3893.4	4007.1	4116.2
DLF Ltd.	246.6	254.5	207.3	225.6	236.1	265.0	283.3	293.8
Dr. Lal Pathlabs Ltd.	3336.6	3285.3	2892.0	3006.0	3171.3	3450.6	3564.6	3729.9
Dr. Reddy's Laboratories Ltd.	4997.0	4937.3	4329.6	4512.3	4754.6	5179.6	5362.3	5604.6
Eicher Motors Ltd.	2427.2	2444.1	2263.4	2329.3	2378.2	2493.1	2559.0	2607.9
Escorts Ltd.	1216.0	1221.2	1126.4	1159.7	1187.9	1249.3	1282.6	1310.8
Exide Industries Ltd.	176.3	178.8	162.7	168.9	172.6	182.5	188.7	192.4

Technical Trend

Symbol	Last Rate	Pivot	Support3	Support2	Support 1	Resist1	Resist2	Resist3
Federal Bank Ltd.	71.2	72.6	63.3	66.8	69.0	74.8	78.3	80.5
GAIL (India) Ltd.	132.8	133.0	125.2	127.9	130.3	135.4	138.1	140.5
Glenmark Pharmaceuticals Ltd.	498.0	509.3	437.3	465.1	481.5	525.7	553.5	569.9
GMR Infrastructure Ltd.	23.4	23.5	21.1	21.9	22.7	24.3	25.1	25.9
Godrej Consumer Products Ltd.	715.4	721.0	666.7	686.6	701.0	735.4	755.3	769.7
Godrej Properties Ltd.	1269.5	1278.6	1158.3	1201.4	1235.4	1312.6	1355.7	1389.7
Granules India	316.8	323.9	282.9	298.9	307.9	332.9	348.9	357.9
Grasim Industries Ltd.	1376.6	1389.7	1297.1	1332.3	1354.5	1411.9	1447.1	1469.3
Gujarat Gas Co. Ltd.	535.1	540.6	488.8	507.9	521.5	554.2	573.3	586.9
Havell's India Ltd.	993.7	1011.5	911.4	950.7	972.2	1033.0	1072.3	1093.8
HCL Technologies Ltd.	1009.4	1017.9	951.0	976.1	992.8	1034.5	1059.6	1076.3
HDFC Asset Management Company Ltd.	2844.7	2838.6	2603.1	2679.6	2762.1	2921.1	2997.6	3080.1
HDFC Bank Ltd.	1367.1	1373.0	1301.0	1327.0	1347.0	1393.0	1419.0	1439.0
HDFC Life Insurance Company Ltd.	687.3	685.6	670.9	675.2	681.3	691.7	696.0	702.1
Hero MotoCorp Ltd.	2786.1	2805.7	2572.6	2656.9	2721.5	2870.3	2954.6	3019.2
Hindalco Industries Ltd.	336.2	340.6	304.8	318.2	327.2	349.6	363.0	372.0
Hindustan Petroleum Corporation Ltd.	226.4	227.3	211.9	217.4	221.9	231.8	237.3	241.8
Hindustan Unilever Ltd.	2462.0	2462.6	2386.3	2412.0	2437.0	2487.6	2513.3	2538.3
Housing Development Finance	2419.9	2426.4	2349.0	2377.0	2398.4	2447.9	2475.9	2497.3
I T C Ltd.	205.3	207.1	197.2	201.1	203.2	209.2	213.1	215.2
ICICI Bank Ltd.	538.6	540.6	508.4	519.8	529.2	550.0	561.4	570.8
ICICI Lombard General Insurance Company Ltd.	1351.1	1366.9	1224.4	1277.2	1314.1	1403.8	1456.6	1493.5
ICICI Prudential Life Insurance	443.7	441.7	414.6	423.0	433.3	452.0	460.4	470.7
IDFC First Bank Ltd.	50.6	50.7	41.0	44.3	47.4	53.8	57.1	60.2
Indiabulls Housing Finance	168.6	174.0	140.8	153.7	161.1	181.5	194.4	201.8
Indian Oil Corporation Ltd.	87.0	88.1	82.0	84.4	85.7	89.4	91.8	93.1
Indian Railway Catering & Tourism	1582.0	1617.7	1413.5	1493.5	1537.7	1662.0	1742.0	1786.2
Indraprastha Gas Ltd.	516.7	515.3	469.0	484.0	500.3	531.6	546.6	562.9
Indus Towers Ltd.	242.9	245.6	226.3	233.6	238.3	250.3	257.6	262.3
IndusInd Bank Ltd.	844.4	858.5	777.9	809.5	826.9	875.9	907.5	924.9
Info Edge (India) Ltd.	4751.1	4676.7	4304.3	4403.7	4577.4	4850.4	4949.8	5123.5
Infosys Ltd.	1425.8	1439.4	1338.8	1376.9	1401.3	1463.9	1502.0	1526.4
Interglobe Aviation	1593.8	1578.7	1460.6	1494.9	1544.4	1628.1	1662.4	1711.9
Jindal Steel & Power Ltd.	389.0	394.9	356.7	371.4	380.2	403.7	418.4	427.2
JSW Steel Ltd.	604.2	607.8	569.4	583.4	593.8	618.1	632.1	642.5
Jubilant Foodworks Limited	2729.4	2760.1	2533.3	2619.1	2674.3	2815.3	2901.1	2956.3
Kotak Mahindra Bank Ltd.	1742.5	1744.6	1676.5	1699.9	1721.2	1765.9	1789.3	1810.6
L&T Finance Holdings Ltd.	88.6	89.9	75.6	80.8	84.7	93.8	99.0	102.9
L&T Technology Services	2838.7	2828.5	2574.3	2655.7	2747.2	2920.0	3001.4	3092.9
Larsen & Toubro Infotech	4257.8	4257.0	3860.1	3992.1	4124.9	4389.8	4521.8	4654.6
Larsen & Toubro Ltd.	1345.2	1357.0	1258.2	1295.1	1320.1	1382.1	1419.0	1444.0
LIC Housing Finance Ltd.	383.2	390.3	338.6	358.2	370.7	402.8	422.4	434.9
Lupin Ltd.	1045.2	1060.4	956.8	996.4	1020.8	1084.7	1124.3	1148.7
Mahanagar Gas Ltd	1080.9	1094.1	1010.2	1042.6	1061.7	1113.3	1145.7	1164.8
Mahindra & Mahindra Financial	171.0	174.7	135.4	149.7	160.3	185.3	199.6	210.2
Mahindra & Mahindra Ltd.	751.5	756.4	693.3	715.9	733.7	774.2	796.8	814.6
Manappuram Finance Limited	145.5	148.2	127.9	135.6	140.5	153.1	160.8	165.7
Marico Ltd.	407.4	411.1	388.3	397.2	402.3	416.2	425.1	430.2
Maruti Suzuki India Ltd.	6520.6	6587.5	6197.5	6349.8	6435.2	6672.9	6825.2	6910.6
Max Financial Services Ltd.	849.3	854.5	795.1	816.6	833.0	870.8	892.3	908.7

Technical Trend

Symbol	Last Rate	Pivot	Support3	Support2	Support 1	Resist1	Resist2	Resist3
Motherson Sumi Systems Ltd.	200.7	201.3	182.9	189.3	195.0	207.0	213.4	219.1
MphasiS Ltd.	1740.1	1764.5	1570.2	1643.1	1691.6	1813.0	1885.9	1934.4
MRF Ltd.	79227.9	79842.6	75785.3	77342.6	78285.3	80785.3	82342.6	83285.3
Muthoot Finance	1160.0	1169.4	1057.6	1098.0	1129.0	1200.4	1240.8	1271.8
National Aluminium Co. Ltd.	53.7	54.8	46.6	49.7	51.7	56.8	59.9	61.9
Navin Fluorine International Ltd.	2939.6	2929.8	2620.0	2720.0	2829.8	3039.6	3139.6	3249.4
Nestle India Ltd.	17501.7	17487.6	17076.3	17208.7	17355.2	17634.1	17766.5	17913.0
Nippon Life India Asset Management Ltd.	326.7	331.5	287.7	303.9	315.3	342.9	359.1	370.5
NMDC Ltd.	134.3	136.5	122.3	127.8	131.0	139.8	145.3	148.5
NTPC Ltd.	99.1	99.5	94.1	96.1	97.6	101.0	103.0	104.5
Oil & Natural Gas Corporation Ltd.	98.1	99.3	91.5	94.5	96.3	101.1	104.1	105.9
Page Industries	28195.6	28482.3	26619.9	27336.3	27765.9	28911.9	29628.3	30057.9
Petronet LNG Ltd.	221.8	222.0	210.1	214.1	217.9	225.8	229.8	233.6
Pfizer Ltd.	4776.1	4806.7	4437.5	4570.8	4673.4	4909.4	5042.7	5145.3
PI Industries Limited	2465.6	2447.8	2206.3	2280.9	2373.2	2540.2	2614.8	2707.1
Pidilite Industries Ltd.	1849.3	1864.0	1763.6	1802.0	1825.6	1887.6	1926.0	1949.6
Piramal Enterprises	1630.1	1668.4	1407.9	1507.5	1568.8	1729.7	1829.3	1890.6
Power Finance Corporation Ltd.	104.8	107.0	94.0	99.1	101.9	109.8	114.9	117.7
Power Grid Corporation of India Ltd.	201.2	202.1	189.4	194.0	197.6	205.7	210.3	213.9
Punjab National Bank	34.0	34.7	29.0	31.2	32.6	36.1	38.3	39.7
PVR Limited	1087.4	1085.3	988.6	1020.2	1053.8	1118.9	1150.5	1184.1
RBL Bank	188.7	192.5	156.4	169.7	179.2	202.0	215.3	224.8
REC Ltd.	125.1	125.9	113.0	117.6	121.3	129.6	134.2	137.9
Reliance Industries Ltd.	1911.2	1924.3	1826.0	1863.1	1887.1	1948.3	1985.4	2009.4
S&P CNX NIFTY	14310.8	14404.0	13751.7	14000.2	14155.5	14559.3	14807.8	14963.1
SBI Life Insurance Company Ltd.	872.5	882.1	821.9	845.2	858.8	895.7	919.0	932.6
Shree Cement Ltd.	29881.1	30378.8	27520.5	28639.2	29260.1	30999.7	32118.4	32739.3
Shriram Transport Finance Co. Ltd.	1300.9	1336.6	1134.3	1213.6	1257.3	1380.2	1459.5	1503.2
Siemens Ltd.	1729.8	1761.2	1568.2	1643.0	1686.4	1804.6	1879.4	1922.8
SRF Ltd.	6123.0	6082.6	5630.4	5767.7	5945.3	6260.3	6397.6	6575.2
State Bank of India	328.9	331.8	298.2	310.4	319.6	341.1	353.3	362.5
Steel Authority of India Ltd.	84.7	86.7	73.0	78.2	81.5	90.0	95.2	98.5
Sun Pharmaceutical Industries Ltd.	619.4	626.8	577.1	596.2	607.8	638.4	657.5	669.1
Sun TV Network Ltd.	453.9	463.5	403.7	426.9	440.4	477.0	500.2	513.7
Tata Chemicals Ltd.	750.3	761.7	688.0	716.3	733.3	778.7	807.0	824.0
Tata Consultancy Services Ltd.	3246.6	3266.0	3068.9	3141.1	3193.8	3318.7	3390.9	3443.6
Tata Consumer Products Ltd.	655.6	660.4	619.6	634.8	645.2	670.8	686.0	696.4
Tata Motors Ltd.	286.6	292.4	252.1	267.5	277.0	302.0	317.4	326.9
Tata Power Co. Ltd.	92.2	94.4	76.6	83.3	87.7	98.8	105.5	109.9
Tata Steel Ltd.	851.6	862.7	782.4	812.9	832.2	882.1	912.6	931.9
Tech Mahindra Ltd.	1039.9	1038.6	975.8	996.3	1018.1	1060.3	1080.8	1102.6
The Ramco Cements Ltd.	1053.5	1044.5	974.2	994.6	1024.1	1073.9	1094.3	1123.8
Titan Company Ltd.	1510.5	1528.5	1413.9	1458.1	1484.3	1554.7	1598.9	1625.1
Torrent Pharmaceuticals Ltd.	2555.8	2588.9	2342.6	2435.7	2495.8	2648.9	2742.0	2802.1
Torrent Power Ltd.	400.0	404.0	365.8	379.8	389.9	414.1	428.1	438.2
Trent Ltd.	710.8	706.5	662.4	675.7	693.2	724.0	737.3	754.8
TVS Motor Company Ltd.	538.9	543.8	500.7	516.7	527.8	554.9	570.9	582.0
UltraTech Cement Ltd.	6509.4	6579.9	6100.2	6283.6	6396.5	6692.8	6876.2	6989.1
United Breweries Ltd.	1084.2	1077.3	1013.2	1032.3	1058.2	1103.2	1122.3	1148.2
United Spirits Ltd.	515.7	518.7	480.7	494.4	505.0	529.3	543.0	553.6
UPL Ltd.	589.6	599.6	525.3	553.4	571.5	617.6	645.7	663.8
Vedanta Ltd	213.2	216.3	190.5	200.1	206.7	222.8	232.4	239.0
Vodafone Idea Ltd.	8.8	8.9	7.8	8.2	8.5	9.2	9.6	9.9
Voltas Ltd.	950.3	963.0	870.5	905.6	927.9	985.3	1020.4	1042.7
Wipro Ltd.	432.6	437.4	403.9	416.7	424.6	445.3	458.1	466.0
Zee Entertainment Enterprises Ltd	181.1	186.2	145.9	161.0	171.1	196.2	211.3	221.4

**Disclaimer Appendix****Analyst s holding in the Stock : Nil****Analyst s Certification:**

We analysts and the authors of this report, hereby certify that all of the views expressed in this research report accurately reflect our personal views about any and all of the subject issuer s or securities. We also certify that no part of our compensation was, is, or will be directly or indirectly related to the specific recommendation s or view s in this report. Analysts aren't registered as research analysts by FINRA and might not be an associated person of the BP Equities Pvt. Ltd. Institutional Equities.

General Disclaimer

This report has been prepared by the research department of BP EQUITIES Pvt. Ltd, is for information purposes only. This report is not construed as an offer to sell or the solicitation of an offer to buy or sell any security in any jurisdiction where such an offer or solicitation would be illegal.

BP EQUITIES Pvt. Ltd have exercised due diligence in checking the correctness and authenticity of the information contained herein, so far as it relates to current and historical information, but do not guarantee its accuracy or completeness. The opinions expressed are our current opinions as of the date appearing in the material and may be subject to change from time to time. Prospective investors are cautioned that any forward looking statement are not predictions and are subject to change without prior notice.

Recipients of this material should rely on their own investigations and take their own professional advice. BP EQUITIES Pvt. Ltd or any of its affiliates or employees shall not be in any way responsible for any loss or damage that may arise to any person from any inadvertent error in the information contained in this report. BP EQUITIES Pvt. Ltd. or any of its affiliates or employees do not provide, at any time, any express or implied warranty of any kind, regarding any matter pertaining to this report, including without limitation the implied warranties of merchantability, fitness for a particular purpose, and non-infringement. The recipients of this report should rely on their own investigations.

BP EQUITIES Pvt. Ltd and/or its affiliates and/or employees may have interests/ positions, financial or otherwise in the securities mentioned in this report. Opinions expressed are our current opinions as of the date appearing on this material only. While we endeavor to update on a reasonable basis the information discussed in this material, there may be regulatory, compliance, or other reasons that prevent us from doing so.

This report is not directed to or intended for display, downloading, printing, reproducing or for distribution to or use by any person in any locality, state and country or other jurisdiction where such distribution, publication or use would be contrary to the law or regulation or would subject to BP EQUITIES Pvt. Ltd or any of its affiliates to any registration or licensing requirement within such jurisdiction.

Corporate Office:

4th floor,
Rustom Bldg,
29, Veer Nariman Road, Fort,
Mumbai-400001
Phone- +91 22 6159 6464
Fax-+91 22 6159 6160
Website- www.bpwealth.com

Registered Office:

24/26, 1st Floor, Cama Building,
Dalal street, Fort,
Mumbai-400001
BP Equities Pvt. Ltd.
CIN No: U67120MH1997PTC107392