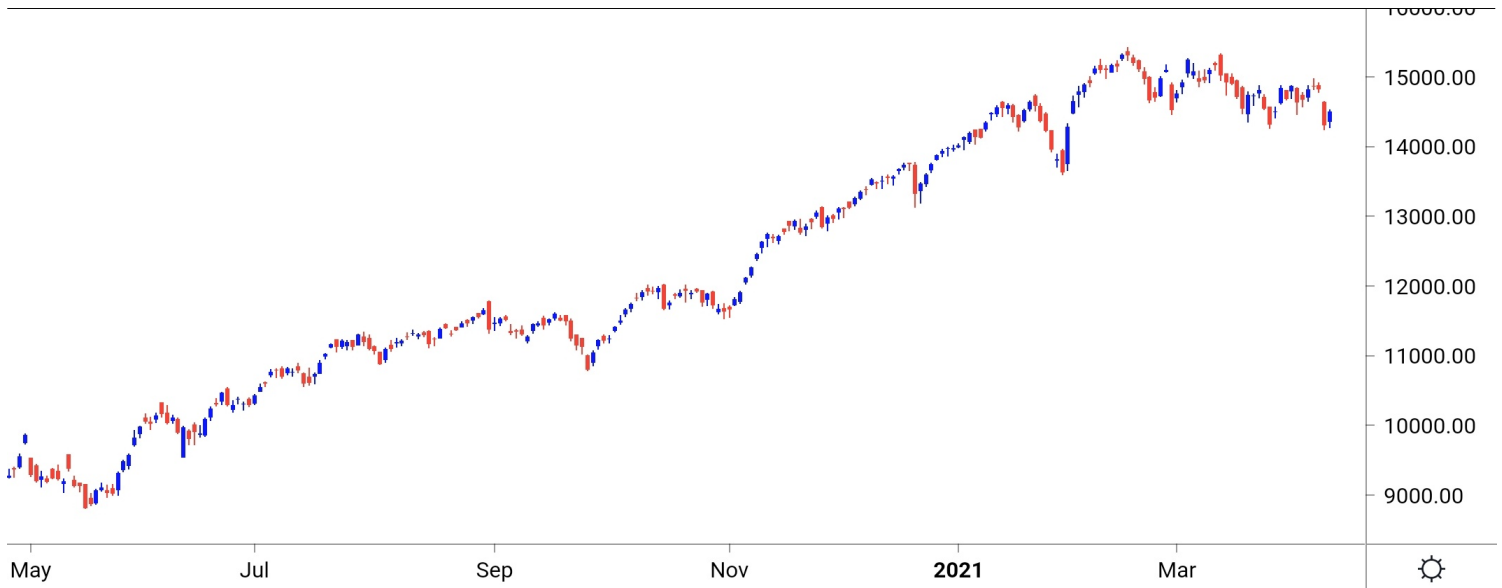


NIFTY SPOT : IMMEDIATE SUPPORT AT 14480-14400



Source: Falcon, BP Equities Research

Nifty spot closed 1.36% higher at 14504. Index opened with wide gap up and remained strong throughout the day closing session near days high with decent gains. Index has reversed taking support near its previous swing low placed near 14250 which is bullish signal for short term trend. Going ahead immediate support comes at 14480-14400-14350. While resistance is seen at 14600-14680-14750.

Intraday Nifty

Resistance - 14600-14680-14750

Support - 14480-14400-14350

BANK NIFTY SPOT : IMMEDIATE SUPPORT AT 31700-31500



Source: Falcon, BP Equities Research

Bank Nifty spot closed 3.18% higher at 31771. Banknifty opened with gap up and remained strong throughout the day closing session near days highs with decent gains. Going ahead Banknifty has an immediate resistance around 32000, sustenance above the same will open the way for 32200-32500. While on downside support comes at 31700-31500-31200.

Intraday Bank Nifty

Resistance - 32000-32200-32500

Support - 31700-31500-31200

Technical Trend

INTRADAY TRADER'S PICKS

Sr.No.	STOCK	CLOSE	Target 1	Target 2	Stop Loss	RECOMMENDATION
1	TATASTEEL	879	892	902	872	BUY ABOVE 882
2	KOTAKBANK	1775	1800	1820	1760	BUY ABOVE 1780
3	HDFC	2512	2545	2570	2495	BUY ABOVE 2520
4	DRREDDY	4777	4710	4660	4810	SELL BELOW 4760
5	HINDUNILVR	2454	2420	2395	2470	SELL BELOW 2445

DERIVATIVES

INDICES SNAPSHOT

SCRIPS	CP AS ON 12/4/2021	CP AS ON 13/4/2021	Change (%)	OI AS ON 12/4/2021	OI AS ON 13/4/2021	Change (%)
BANKNIFTY	30869.25	31865.6	3.23	1970400	1815025	-7.89
FINNIFTY	14748.4	15252.7	3.42	21400	18920	-11.59
NIFTY	14343.25	14541.15	1.38	12391500	12102900	-2.33

Derivative Highlights

- ⇒ Nifty Future closed with a Premium of 52 points v/s a Premium of 54 points in the previous session.
- ⇒ Nifty Future Open Interest Decreased by 2.33%. Bank Nifty Future Open Interest Decreased by 7.89%.
- ⇒ Nifty PCR - OI Increased from 0.48 to 0.80, Nifty Bank PCR - OI Increased from 0.41 to 1.02.
- ⇒ FII Sold Rs 730.81 crore while DII Bought Rs 243.80 crore in the Cash Segment. FII Bought Rs 1995.09 crore in Index Futures, Sold Rs 1468.4 crore in index options, while in Future they Bought Rs 1303.87 crore and Bought Rs 117.64 in stock options.
- ⇒ Among Index Option space, Highest Open Interest concentration was seen in 14000 & 13500 Strike price among the PE options. Where as among CE Options Highest Open Interest Concentration was seen in 15000 & 14700 Strike price.
- ⇒ Highest Open Interest Build Up among the PE options was seen in 14400 & 14500 Strike price. Among CE options highest build up was seen in 14650 & 14700 Strike price.

OI Concentration

PUT OPTION		CALL OPTION	
Strike Price	Open Interest	Strike Price	Open Interest
14000	3183750	15000	5162400
13500	2950575	14700	3084375
14300	2359275	14800	2886600
14200	2328750	14900	2643750
14400	2100975	14600	2113425

Highest Change in OI

PUT OPTION		CALL OPTION	
Strike Price	Change in OI	Strike Price	Change in OI
14400	1239450	14650	520650
14500	922575	14700	388875
14200	806400	14800	178125
14000	762450	14550	113850
14300	648825	14100	92550

MWPL

SCRIPS	OI %	BAN
SUNTV	91%	NO
IBULHSGFIN	88%	NO
CANBK	82%	NO
BHEL	80%	NO
SAIL	79%	NO
PNB	76%	NO
TATAPOWER	75%	NO
ADANI PORTS	75%	NO
TATACHEM	72%	NO
NATIONALUM	69%	NO

Technical Trend

Stock Analysis

Long Build-up	Long Unwinding	Short Build-up	Short Covering
AUBANK	COFORGE	ADANIPOINTS	APOLLOTYRE
DABUR	COLPAL	HCLTECH	BANDHANBNK
MOTHERSUMI	LTTS	LTI	CHOLAFIN
PFIZER	TCS	NESTLEIND	HDFCLIFE
TATAMOTORS	TECHM	PIDILITIND	MARUTI
		SRF	MRF

STATISTICS

Highest Premium

SCRIPS	Premium %	Price change %
SAIL	0.77	7.08
ADANIPOINTS	0.60	-1.83
IDEA	0.56	2.29
AMARAJABAT	0.55	0.71
GLENMARK	0.54	2.69

Highest Discount

SCRIPS	Premium %	Price change %
MUTHOOTFIN	-1.19	1.16
INDIGO	-0.47	0.75
UBL	-0.41	1.55
GODREJPROP	-0.35	2.72
NESTLEIND	-0.21	-1.90

TOP 5 VOLUME GAINER FOR THE SESSION

SCRIPS	CP AS ON 12/4/2021	CP AS ON 13/4/2021	Change (%)	VOL AS ON 12/4/2021	VOL AS ON 13/4/2021	Change (%)
PFIZER	4785.75	5103.35	6.64	1105	3483	215.20
M&M	752.35	811.7	7.89	4227	6790	60.63
MARICO	408.45	421.8	3.27	1117	1781	59.44
ADANIPOINTS	749.15	735.45	-1.83	11332	17402	53.57
MOTHERSUMI	200.7	211.75	5.51	2149	3297	53.42

TOP 5 VOLUME LOSER FOR THE SESSION

SCRIPS	CP AS ON 12/4/2021	CP AS ON 13/4/2021	Change (%)	VOL AS ON 12/4/2021	VOL AS ON 13/4/2021	Change (%)
SAIL	84.8	91.4	7.78	569	166	-70.83
IRCTC	1582.85	1617.4	2.18	4568	1343	-70.60
TORNTPHARM	2569.2	2578.8	0.37	3405	1104	-67.58
ALKEM	2755.2	2761.85	0.24	1872	625	-66.61
IDEA	8.8	9	2.27	3499	1301	-62.82

Technical Trend

TOP 10 OPEN INTEREST GAINER FOR THE SESSION

SCRIPS	CP AS ON 12/4/2021	CP AS ON 13/4/2021	Change (%)	OI AS ON 12/4/2021	OI AS ON 13/4/2021	Change (%)
PFIZER	4785.75	5103.35	6.64	87250	157375	80.37
LALPATHLAB	3340.45	2958	-11.45	372000	437250	17.54
VOLTAS	953.75	961.1	0.77	4171000	4623000	10.84
PIDILITIND	1854.4	1807	-2.56	1801000	1974500	9.63
AUBANK	1080.2	1085.05	0.45	2416000	2607500	7.93
ADANIPTS	749.15	735.45	-1.83	64350000	68955000	7.16
GLENMARK	499.5	514.15	2.93	8913650	9533500	6.95
DLF	247.85	256.65	3.55	30122400	32125500	6.65
DEEPAKTR	1587.25	1593.85	0.42	1054500	1118500	6.07
JSWSTEEL	606.4	632.65	4.33	35294400	37181700	5.35

TOP 10 OPEN INTEREST LOSER FOR THE SESSION

SCRIPS	CP AS ON 12/4/2021	CP AS ON 13/4/2021	Change (%)	OI AS ON 12/4/2021	OI AS ON 13/4/2021	Change (%)
CHOLAFIN	512.35	532.95	4.02	6157500	5515000	-10.43
APOLLOTYRE	204.05	215.75	5.73	11965000	10750000	-10.15
BANKNIFTY	30869.25	31865.6	3.23	1970400	1815025	-7.89
POWERGRID	201.65	208.9	3.60	20464000	18960000	-7.35
GUJGASLTD	534.95	526.15	-1.65	937500	872500	-6.93
FEDERALBNK	71.45	77	7.77	68910000	64570000	-6.30
CUMMINSIND	820.6	843.05	2.74	1570800	1473600	-6.19
GODREJPROP	1265.9	1299.5	2.65	1673750	1573000	-6.02
M&M	752.35	811.7	7.89	9832200	9345000	-4.96
COFORGE	3126.9	2900.35	-7.25	684000	650250	-4.93

Technical Trend

Pivot Report– Nifty F&O

Symbol	Last Rate	Pivot	Support3	Support2	Support 1	Resist1	Resist2	Resist3
Aarti Industries Ltd.	1370.3	1370.6	1312.5	1331.9	1351.1	1389.8	1409.2	1428.4
ACC Ltd.	1882.2	1881.7	1811.5	1834.8	1858.5	1905.4	1928.7	1952.4
Adani Enterprises Ltd.	1106.4	1091.2	1000.9	1026.0	1066.2	1131.4	1156.5	1196.7
Adani Ports & Special Economic Zone Ltd.	731.1	729.4	648.6	675.0	703.0	757.4	783.8	811.8
Alembic Pharmaceuticals Ltd.	975.8	971.9	932.5	944.3	960.1	987.6	999.4	1015.2
Alkem Laboratories Ltd.	2751.8	2776.0	2608.1	2672.1	2711.9	2815.8	2879.8	2919.6
Amara Raja Batteries Ltd.	805.2	802.2	776.3	784.0	794.6	812.8	820.5	831.1
Ambuja Cements Ltd.	302.3	303.3	287.0	292.7	297.5	308.1	313.8	318.6
Apollo Hospitals Enterprises Ltd.	2980.8	2997.9	2823.0	2887.0	2933.9	3044.8	3108.8	3155.7
Apollo Tyres Ltd.	215.5	212.1	191.4	197.2	206.3	221.2	227.0	236.1
Ashok Leyland Ltd.	115.3	114.2	108.3	109.9	112.6	116.9	118.5	121.2
Asian Paints Ltd.	2570.7	2587.0	2486.3	2525.3	2548.0	2609.7	2648.7	2671.4
Au Small Finance Bank Ltd.	1080.8	1073.9	970.8	1002.8	1041.8	1112.9	1144.9	1183.9
Aurobindo Pharma Ltd.	909.3	907.9	855.3	872.4	890.8	926.3	943.4	961.8
Axis Bank Ltd.	661.0	652.0	604.2	617.1	639.1	673.9	686.8	708.8
Bajaj Auto Ltd.	3602.5	3580.5	3428.7	3472.0	3537.2	3645.7	3689.0	3754.2
Bajaj Finance	4728.8	4672.6	4309.4	4411.7	4570.2	4831.1	4933.4	5091.9
Bajaj Finserv Ltd.	9806.7	9614.8	8724.6	8957.3	9382.0	10039.5	10272.2	10696.9
Balkrishna Industries Ltd.	1673.9	1651.0	1544.4	1572.3	1623.1	1701.8	1729.7	1780.5
Bandhan Bank Ltd.	331.9	330.5	297.6	308.1	320.0	342.4	352.9	364.8
BANK NIFTY	31771.6	31459.9	29871.9	30297.3	31034.5	32197.1	32622.5	33359.7
Bank of Baroda	68.9	68.2	64.0	65.2	67.0	70.0	71.2	73.0
Bata India Ltd.	1313.0	1315.1	1268.0	1284.4	1298.7	1329.4	1345.8	1360.1
Berger Paints India Ltd.	725.2	728.4	699.9	710.5	717.8	735.7	746.3	753.6
Bharat Electronics Ltd.	125.6	124.5	118.2	119.9	122.8	127.3	129.0	131.9
Bharat Forge Ltd.	590.6	588.2	564.8	571.8	581.2	597.6	604.6	614.0
Bharat Heavy Electricals Ltd.	46.6	46.0	43.0	43.8	45.2	47.4	48.2	49.6
Bharat Petroleum Corporation Ltd.	409.4	408.0	393.3	397.7	403.6	413.9	418.3	424.2
Bharti Airtel Ltd.	536.2	533.1	509.3	516.2	526.2	543.1	550.0	560.0
Biocon Ltd.	407.0	406.9	390.4	395.9	401.4	412.4	417.9	423.4
Bosch Ltd.	13888.0	13791.5	12951.2	13199.1	13543.6	14136.0	14383.9	14728.4
Britannia Industries Ltd.	3746.0	3774.0	3583.1	3656.1	3701.0	3819.0	3892.0	3936.9
Cadila Healthcare Ltd.	490.0	493.9	439.8	459.2	474.6	509.3	528.7	544.1
Canara Bank	137.4	135.6	126.9	129.2	133.3	139.7	142.0	146.1
Cholamandalam Investment and Finance Company	532.5	527.9	475.1	491.2	511.8	548.5	564.6	585.2
Cipla Ltd.	885.2	898.7	810.5	844.4	864.8	919.1	953.0	973.4
City Union Bank Ltd.	162.5	162.0	153.8	156.4	159.4	165.1	167.7	170.7
Coal India Ltd	128.0	127.1	122.0	123.4	125.7	129.3	130.7	133.0
Coforge Ltd.	2890.5	2952.7	2423.2	2620.4	2755.5	3087.8	3285.0	3420.1
Colgate Palmolive (India) Ltd.	1539.7	1554.3	1464.9	1499.6	1519.6	1574.3	1609.0	1629.0
Container Corporation of India Ltd.	573.7	570.3	550.5	555.9	564.8	579.2	584.6	593.5
Cummins India Ltd.	839.7	829.1	775.0	789.5	814.6	854.2	868.7	893.8
Dabur India Ltd.	560.3	560.1	543.1	548.7	554.5	565.9	571.5	577.3
Deepak Nitrite	1587.1	1594.3	1502.1	1535.2	1561.2	1620.3	1653.4	1679.4
Divi's Laboratories Ltd.	3718.5	3756.8	3515.6	3608.8	3663.6	3811.6	3904.8	3959.6
DLF Ltd.	255.7	253.4	236.0	241.0	248.4	260.8	265.8	273.2
Dr. Lal Pathlabs Ltd.	2948.0	3071.0	2327.1	2616.1	2782.0	3236.9	3525.9	3691.8
Dr. Reddy's Laboratories Ltd.	4777.3	4891.0	4243.8	4497.4	4637.4	5031.0	5284.6	5424.6
Eicher Motors Ltd.	2493.9	2473.0	2356.3	2388.3	2441.1	2525.8	2557.8	2610.6
Escorts Ltd.	1234.1	1224.5	1160.3	1178.5	1206.3	1252.3	1270.5	1298.3
Exide Industries Ltd.	179.5	178.9	172.0	174.1	176.8	181.6	183.7	186.4

Technical Trend

Symbol	Last Rate	Pivot	Support3	Support2	Support 1	Resist1	Resist2	Resist3
Federal Bank Ltd.	77.0	75.2	66.4	68.7	72.9	79.3	81.6	85.8
GAIL (India) Ltd.	138.9	137.6	129.2	131.6	135.2	141.2	143.6	147.2
Glenmark Pharmaceuticals Ltd.	511.4	505.2	456.5	470.7	491.0	525.6	539.8	560.1
GMR Infrastructure Ltd.	24.3	24.0	22.4	22.8	23.5	24.7	25.1	25.8
Godrej Consumer Products Ltd.	723.5	723.3	692.6	702.8	713.1	733.7	743.9	754.2
Godrej Properties Ltd.	1304.0	1297.7	1233.6	1252.8	1278.4	1323.3	1342.5	1368.1
Granules India	318.1	318.5	299.6	306.0	312.1	324.5	330.9	337.0
Grasim Industries Ltd.	1392.2	1389.8	1336.9	1353.7	1373.0	1409.1	1425.9	1445.2
Gujarat Gas Co. Ltd.	526.0	527.5	473.0	491.7	508.8	544.6	563.3	580.4
Havell's India Ltd.	1023.8	1011.1	944.9	962.8	993.3	1041.6	1059.5	1090.0
HCL Technologies Ltd.	983.4	992.1	914.9	943.5	963.5	1012.1	1040.7	1060.7
HDFC Asset Management Company Ltd.	2873.0	2863.3	2773.7	2800.3	2836.7	2899.7	2926.3	2962.7
HDFC Bank Ltd.	1400.4	1389.3	1326.6	1343.8	1372.1	1417.5	1434.7	1463.0
HDFC Life Insurance Company Ltd.	706.1	700.6	664.8	674.9	690.5	716.2	726.3	741.9
Hero MotoCorp Ltd.	2865.4	2839.2	2693.7	2733.5	2799.4	2905.2	2945.0	3010.9
Hindalco Industries Ltd.	348.7	345.1	325.7	331.0	339.8	353.9	359.2	368.0
Hindustan Petroleum Corporation Ltd.	231.6	229.9	220.2	222.9	227.2	234.3	237.0	241.3
Hindustan Unilever Ltd.	2454.4	2469.7	2376.4	2412.6	2433.5	2490.6	2526.8	2547.7
Housing Development Finance Corporation Ltd.	2513.0	2482.8	2331.6	2371.9	2442.4	2553.3	2593.6	2664.1
I T C Ltd.	208.7	208.1	202.9	204.4	206.6	210.3	211.8	214.0
ICICI Bank Ltd.	560.6	554.1	518.4	528.1	544.4	570.3	580.0	596.3
ICICI Lombard General Insurance Company Ltd.	1364.0	1365.9	1301.9	1323.9	1343.9	1386.0	1408.0	1428.0
ICICI Prudential Life Insurance Company	458.9	453.9	428.5	435.3	447.1	465.7	472.5	484.3
IDFC First Bank Ltd.	54.1	53.1	48.3	49.6	51.8	55.3	56.6	58.8
Indiabulls Housing Finance	171.9	170.6	160.9	163.7	167.8	174.7	177.5	181.6
Indian Oil Corporation Ltd.	88.8	88.4	85.4	86.2	87.5	89.7	90.5	91.8
Indian Railway Catering & Tourism Corp Ltd.	1611.7	1605.6	1547.2	1564.6	1588.1	1629.1	1646.5	1670.0
Indraprastha Gas Ltd.	522.2	519.4	502.1	506.9	514.6	527.1	531.9	539.6
Indus Towers Ltd.	245.1	244.5	235.2	238.1	241.6	247.9	250.8	254.3
IndusInd Bank Ltd.	877.4	867.6	817.8	831.1	854.3	890.8	904.1	927.3
Info Edge (India) Ltd.	4556.9	4625.6	4171.2	4345.6	4451.2	4731.2	4905.6	5011.2
Infosys Ltd.	1397.2	1402.5	1309.4	1342.2	1369.7	1429.9	1462.7	1490.2
Interglobe Aviation	1605.8	1613.1	1540.7	1567.3	1586.5	1632.3	1658.9	1678.1
Jindal Steel & Power Ltd.	409.5	401.8	364.6	374.5	392.0	419.3	429.2	446.7
JSW Steel Ltd.	630.4	622.4	583.2	593.6	612.0	640.8	651.2	669.6
Jubliant Foodworks Limited	2762.7	2732.1	2579.2	2620.0	2691.3	2803.4	2844.2	2915.5
Kotak Mahindra Bank Ltd.	1775.9	1761.8	1674.9	1699.2	1737.5	1800.1	1824.4	1862.7
L&T Finance Holdings Ltd.	94.8	93.0	85.1	87.2	91.0	96.8	98.9	102.7
L&T Technology Services	2689.4	2747.7	2407.4	2540.3	2614.8	2822.3	2955.2	3029.7
Larsen & Toubro Infotech	4108.3	4165.5	3749.6	3907.3	4007.8	4265.9	4423.6	4524.1
Larsen & Toubro Ltd.	1373.7	1367.7	1318.6	1332.9	1353.3	1388.1	1402.4	1422.8
LIC Housing Finance Ltd.	394.2	390.2	370.4	375.7	384.9	399.4	404.7	413.9
Lupin Ltd.	1036.0	1038.9	982.6	1002.3	1019.2	1055.8	1075.5	1092.4
Mahanagar Gas Ltd	1094.2	1086.9	1030.9	1047.1	1070.7	1110.5	1126.7	1150.3
Mahindra & Mahindra Financial Services Ltd.	176.7	175.6	164.4	167.7	172.2	180.1	183.4	187.9
Mahindra & Mahindra Ltd.	811.3	793.0	702.8	726.8	769.0	835.2	859.2	901.4
Manappuram Finance Limited	148.5	148.0	140.5	142.8	145.7	150.9	153.2	156.1
Marico Ltd.	421.3	417.4	393.9	400.4	410.9	427.9	434.4	444.9
Maruti Suzuki India Ltd.	6815.8	6710.0	6198.0	6333.4	6574.6	6951.2	7086.6	7327.8
Max Financial Services Ltd.	874.2	865.7	824.6	835.5	854.8	885.0	895.9	915.2

Technical Trend

Symbol	Last Rate	Pivot	Support3	Support2	Support 1	Resist1	Resist2	Resist3
Motherson Sumi Systems Ltd.	211.6	208.3	192.0	196.3	204.0	216.0	220.3	228.0
MphasiS Ltd.	1682.3	1681.2	1448.7	1525.9	1604.1	1759.4	1836.6	1914.8
MRF Ltd.	82671.6	81690.5	76481.1	77890.5	80281.1	84081.1	85490.5	87881.1
Muthoot Finance	1173.4	1183.8	1118.8	1144.0	1158.7	1198.5	1223.7	1238.4
National Aluminium Co. Ltd.	55.9	55.2	51.8	52.7	54.3	56.8	57.7	59.3
Navin Fluorine International Ltd.	2961.2	2974.8	2798.6	2861.9	2911.5	3024.4	3087.7	3137.3
Nestle India Ltd.	17168.8	17269.6	16379.5	16709.8	16939.3	17499.1	17829.4	18058.9
Nippon Life India Asset Management Ltd.	329.2	328.1	315.1	319.1	324.1	333.1	337.1	342.1
NMDC Ltd.	138.4	136.9	128.9	131.0	134.7	140.6	142.7	146.4
NTPC Ltd.	100.6	100.3	97.6	98.4	99.5	101.4	102.2	103.3
Oil & Natural Gas Corporation Ltd.	102.1	100.9	94.8	96.4	99.2	103.7	105.3	108.1
Page Industries	29260.8	29018.4	27363.1	27834.1	28547.4	29731.7	30202.7	30916.0
Petronet LNG Ltd.	225.0	223.7	215.6	217.9	221.4	227.2	229.5	233.0
Pfizer Ltd.	5082.0	4989.7	4416.3	4576.7	4829.3	5242.3	5402.7	5655.3
PI Industries Limited	2446.9	2459.1	2200.5	2290.8	2368.8	2537.1	2627.4	2705.4
Pidilite Industries Ltd.	1799.0	1816.6	1705.5	1748.4	1773.7	1841.9	1884.8	1910.1
Piramal Enterprises	1714.1	1691.7	1560.2	1596.6	1655.3	1750.4	1786.8	1845.5
Power Finance Corporation Ltd.	110.0	108.4	101.3	103.2	106.6	111.8	113.7	117.1
Power Grid Corporation of India Ltd.	208.8	206.9	197.4	199.9	204.3	211.3	213.8	218.2
Punjab National Bank	35.1	34.7	32.4	33.0	34.1	35.7	36.3	37.4
PVR Limited	1085.9	1080.3	1024.6	1041.3	1063.6	1102.6	1119.3	1141.6
RBL Bank	193.7	191.9	179.8	183.2	188.4	197.1	200.5	205.7
REC Ltd.	131.0	129.4	120.8	123.1	127.1	133.4	135.7	139.7
Reliance Industries Ltd.	1931.8	1930.1	1896.8	1907.3	1919.6	1942.3	1952.8	1965.1
S&P CNX NIFTY	14504.8	14436.2	14089.5	14182.2	14343.5	14597.5	14690.2	14851.5
SBI Life Insurance Company Ltd.	897.8	891.1	855.5	865.1	881.5	907.5	917.1	933.5
Shree Cement Ltd.	30356.1	30388.7	29487.5	29798.8	30077.4	30667.3	30978.6	31257.2
Shriram Transport Finance Co. Ltd.	1382.3	1364.0	1241.7	1276.4	1329.3	1416.9	1451.6	1504.5
Siemens Ltd.	1769.8	1759.3	1665.3	1693.1	1731.5	1797.7	1825.5	1863.9
SRF Ltd.	6052.8	6136.9	5641.8	5834.9	5943.8	6245.9	6439.0	6547.9
State Bank of India	341.0	337.9	321.8	326.2	333.6	345.3	349.7	357.1
Steel Authority of India Ltd.	90.7	89.3	80.5	82.9	86.8	93.2	95.6	99.5
Sun Pharmaceutical Industries Ltd.	627.4	626.3	597.7	606.9	617.1	636.6	645.8	656.0
Sun TV Network Ltd.	465.1	462.0	444.7	449.4	457.3	469.9	474.6	482.5
Tata Chemicals Ltd.	759.2	755.3	715.0	727.2	743.2	771.3	783.5	799.5
Tata Consultancy Services Ltd.	3104.1	3130.4	2905.8	2989.4	3046.7	3187.7	3271.3	3328.6
Tata Consumer Products Ltd.	664.0	666.0	632.1	644.1	654.0	675.9	687.9	697.8
Tata Motors Ltd.	302.9	296.0	263.4	272.0	287.4	311.4	320.0	335.4
Tata Power Co. Ltd.	95.9	94.6	88.1	89.8	92.8	97.6	99.3	102.3
Tata Steel Ltd.	879.0	869.9	825.5	837.3	858.1	890.7	902.5	923.3
Tech Mahindra Ltd.	1001.9	1011.7	905.9	944.5	973.2	1040.4	1079.0	1107.7
The Ramco Cements Ltd.	1056.8	1057.8	1004.1	1022.3	1039.6	1075.0	1093.2	1110.5
Titan Company Ltd.	1530.6	1533.5	1477.1	1496.9	1513.7	1550.4	1570.2	1587.0
Torrent Pharmaceuticals Ltd.	2566.7	2572.6	2475.1	2509.6	2538.1	2601.1	2635.6	2664.1
Torrent Power Ltd.	397.0	397.5	369.2	378.8	387.9	406.6	416.2	425.3
Trent Ltd.	729.3	724.6	695.3	703.5	716.4	737.5	745.7	758.6
TVS Motor Company Ltd.	548.0	543.9	521.9	527.9	537.9	553.9	559.9	569.9
UltraTech Cement Ltd.	6604.5	6588.5	6368.7	6436.7	6520.6	6672.4	6740.4	6824.3
United Breweries Ltd.	1101.0	1097.9	1056.5	1069.2	1085.1	1113.8	1126.5	1142.4
United Spirits Ltd.	524.2	521.7	506.5	510.7	517.5	528.5	532.7	539.5
UPL Ltd.	604.6	604.0	560.1	574.5	589.6	619.1	633.5	648.6
Vedanta Ltd	218.5	216.7	206.5	209.3	213.9	221.3	224.1	228.7
Vodafone Idea Ltd.	9.0	8.9	8.6	8.7	8.8	9.0	9.1	9.2
Voltas Ltd.	958.3	958.1	922.3	934.2	946.2	970.1	982.0	994.0
Wipro Ltd.	419.0	423.0	383.6	398.1	408.5	433.5	448.0	458.4
Zee Entertainment Enterprises Ltd	188.1	186.5	176.5	179.3	183.7	190.8	193.6	198.0

**Disclaimer Appendix****Analyst s holding in the Stock : Nil****Analyst s Certification:**

We analysts and the authors of this report, hereby certify that all of the views expressed in this research report accurately reflect our personal views about any and all of the subject issuer s or securities. We also certify that no part of our compensation was, is, or will be directly or indirectly related to the specific recommendation s or view s in this report. Analysts aren't registered as research analysts by FINRA and might not be an associated person of the BP Equities Pvt. Ltd. Institutional Equities.

General Disclaimer

This report has been prepared by the research department of BP EQUITIES Pvt. Ltd, is for information purposes only. This report is not construed as an offer to sell or the solicitation of an offer to buy or sell any security in any jurisdiction where such an offer or solicitation would be illegal.

BP EQUITIES Pvt. Ltd have exercised due diligence in checking the correctness and authenticity of the information contained herein, so far as it relates to current and historical information, but do not guarantee its accuracy or completeness. The opinions expressed are our current opinions as of the date appearing in the material and may be subject to change from time to time. Prospective investors are cautioned that any forward looking statement are not predictions and are subject to change without prior notice.

Recipients of this material should rely on their own investigations and take their own professional advice. BP EQUITIES Pvt. Ltd or any of its affiliates or employees shall not be in any way responsible for any loss or damage that may arise to any person from any inadvertent error in the information contained in this report. BP EQUITIES Pvt. Ltd. or any of its affiliates or employees do not provide, at any time, any express or implied warranty of any kind, regarding any matter pertaining to this report, including without limitation the implied warranties of merchantability, fitness for a particular purpose, and non-infringement. The recipients of this report should rely on their own investigations.

BP EQUITIES Pvt. Ltd and/or its affiliates and/or employees may have interests/ positions, financial or otherwise in the securities mentioned in this report. Opinions expressed are our current opinions as of the date appearing on this material only. While we endeavor to update on a reasonable basis the information discussed in this material, there may be regulatory, compliance, or other reasons that prevent us from doing so.

This report is not directed to or intended for display, downloading, printing, reproducing or for distribution to or use by any person in any locality, state and country or other jurisdiction where such distribution, publication or use would be contrary to the law or regulation or would subject to BP EQUITIES Pvt. Ltd or any of its affiliates to any registration or licensing requirement within such jurisdiction.

Corporate Office:

4th floor,
Rustom Bldg,
29, Veer Nariman Road, Fort,
Mumbai-400001
Phone- +91 22 6159 6464
Fax-+91 22 6159 6160
Website- www.bpwealth.com

Registered Office:

24/26, 1st Floor, Cama Building,
Dalal street, Fort,
Mumbai-400001
BP Equities Pvt. Ltd.
CIN No: U67120MH1997PTC107392