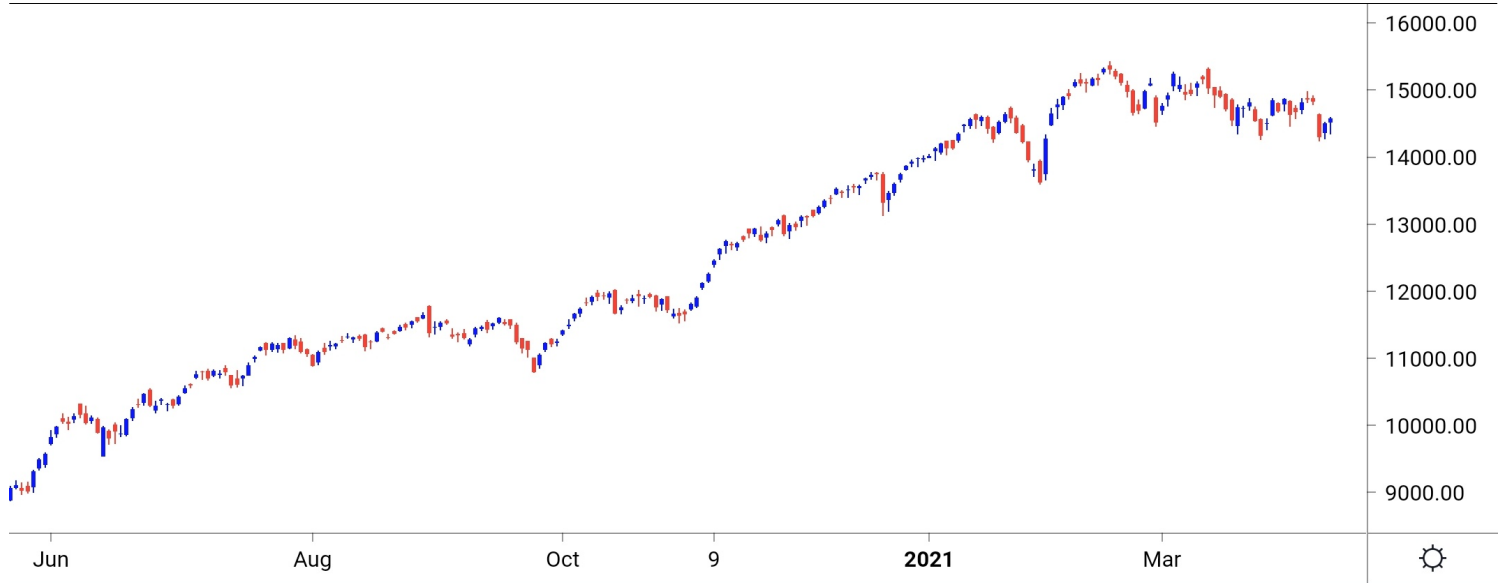


NIFTY SPOT : IMMEDIATE SUPPORT AT 14530-14450



Source: Falcon, BP Equities Research

Nifty spot closed 0.53% higher at 14581. Index opened on a flat note and witnessed sharp selling pressure for first half of the session, later on witnessed strong recovery to close near days high with minor gains. Going ahead index has an immediate support around 14530-14450-14400. On the higher side resistance is placed near 14650-14730-14800.

Intraday Nifty

Resistance - 14650-14730-14800

Support - 14530-14450-14400

BANK NIFTY SPOT : IMMEDIATE SUPPORT AT 31900-31700



Source: Falcon, BP Equities Research

Bank Nifty spot closed 1.07% higher at 32112. Banknifty opened with minor gap up and witnessed profit booking in the first part of the session, while later on Banknifty recovered from the lows to closed the day near the days highs. Going ahead Banknifty has an immediate resistance around 32350-32600-32800. On the opposite side support comes at 31900-31700-31400.

Intraday Bank Nifty

Resistance - 32350-32600-32800

Support - 31900-31700-31400

Technical Trend

INTRADAY TRADER'S PICKS

Sr.No.	STOCK	CLOSE	Target 1	Target 2	Stop Loss	RECOMMENDATION
1	ASIANPAINT	2587	2620	2645	2570	BUY ABOVE 2595
2	HDFC	2547	2580	2605	2530	BUY ABOVE 2555
3	MARUTI	6644	6720	6780	6600	BUY ABOVE 6660
4	ACC	1836	1810	1790	1850	SELL BELOW 1830
5	LT	1375	1355	1340	1385	SELL BELOW 1370

DERIVATIVES

INDICES SNAPSHOT

SCRIPS	CP AS ON 13/4/2021	CP AS ON 15/4/2021	Change (%)	OI AS ON 13/4/2021	OI AS ON 15/4/2021	Change (%)
BANKNIFTY	31865.6	32206.95	1.07	1815025	2028700	11.77
FINNIFTY	15252.7	15414.1	1.06	18920	18360	-2.96
NIFTY	14541.15	14592	0.35	12102900	12134325	0.26

Derivative Highlights

- ⇒ Nifty Future closed with a Premium of 19 points v/s a Premium of 52 points in the previous session.
- ⇒ Nifty Future Open Interest Increased by 0.26%. Bank Nifty Future Open Interest Increased by 11.77%.
- ⇒ Nifty PCR - OI Increased from 0.80 to 0.81, Nifty Bank PCR - OI Increased from 1.02 to 1.15.
- ⇒ FII Bought Rs 979.70 crore while DII Sold Rs 526.63 crore in the Cash Segment. FII Bought Rs 1308.64 crore in Index Futures, Bought Rs 7098.62 crore in index options, while in Future they Sold Rs 805.31 crore and Sold Rs 372.93 in stock options.
- ⇒ Among Index Option space, Highest Open Interest concentration was seen in 14000 & 13500 Strike price among the PE options. Where as among CE Options Highest Open Interest Concentration was seen in 15000 & 15500 Strike price.
- ⇒ Highest Open Interest Build Up among the PE options was seen in 13000 & 14000 Strike price. Among CE options highest build up was seen in 15000 & 15500 Strike price.

OI Concentration

PUT OPTION		CALL OPTION	
Strike Price	Open Interest	Strike Price	Open Interest
14000	1869600	15000	1946775
13500	1508100	15500	1603125
13000	1378200	15100	1127625
14500	1082925	16000	1082925
14200	1059975	14700	1048350

Highest Change in OI

PUT OPTION		CALL OPTION	
Strike Price	Change in OI	Strike Price	Change in OI
13000	1152975	15000	1218825
14000	923700	15500	1024050
13500	908175	16000	930225
14500	829425	14700	777000
14200	684375	15400	729300

MWPL

SCRIPS	OI %	BAN
SAIL	96%	YES
IBULHSGFIN	92%	NO
SUNTV	92%	NO
CANBK	82%	NO
BHEL	81%	NO
TATAPOWER	76%	NO
PNB	76%	NO
ADANI PORTS	75%	NO
TATACHEM	74%	NO
NATIONALUM	71%	NO

Technical Trend

Stock Analysis

Long Build-up	Long Unwinding	Short Build-up	Short Covering
AUROPHARMA	ALKEM	ACC	ASIANPAINT
BHARTIARTL	AMBUJACEM	BATAINDIA	AXISBANK
CADILAHC	BHARATFORG	BPCL	COALINDIA
CIPLA	CONCOR	CUB	DIVISLAB
DABUR	IRCTC	INFY	ICICIBANK
GLENMARK	LTI	LT	LUPIN

STATISTICS

Highest Premium

SCRIPS	Premium %	Price change %
IDEA	0.56	0.00
WIPRO	0.55	2.80
AUBANK	0.52	-2.35
MGL	0.50	-0.96
IDFCFIRSTB	0.48	-2.96

Highest Discount

SCRIPS	Premium %	Price change %
MUTHOOTFIN	-1.30	-1.73
INDIGO	-0.66	0.26
GODREJPROP	-0.48	3.36
PVR	-0.28	-2.21
HCLTECH	-0.27	0.86

TOP 5 VOLUME GAINER FOR THE SESSION

SCRIPS	CP AS ON 13/4/2021	CP AS ON 15/4/2021	Change (%)	VOL AS ON 13/4/2021	VOL AS ON 15/4/2021	Change (%)
SAIL	91.4	93.1	1.86	166	5703	3335.54
AUROPHARMA	912.1	918.9	0.75	2732	8714	218.96
SIEMENS	1770.8	1817.2	2.62	558	1521	172.58
RAMCOCEM	1060.65	1010.3	-4.75	812	1915	135.84
CUB	163.15	162.35	-0.49	350	709	102.57

TOP 5 VOLUME LOSER FOR THE SESSION

SCRIPS	CP AS ON 13/4/2021	CP AS ON 15/4/2021	Change (%)	VOL AS ON 13/4/2021	VOL AS ON 15/4/2021	Change (%)
TORNTPOWER	399	397.05	-0.49	811	313	-61.41
DRREDDY	4796.35	4859.5	1.32	26246	10231	-61.02
PFIZER	5103.35	5155.15	1.02	3483	1405	-59.66
TATAPOWER	96	94.45	-1.61	5276	2516	-52.31
MOTHERSUMI	211.75	208.75	-1.42	3297	1662	-49.59

Technical Trend

TOP 10 OPEN INTEREST GAINER FOR THE SESSION

SCRIPS	CP AS ON 13/4/2021	CP AS ON 15/4/2021	Change (%)	OI AS ON 13/4/2021	OI AS ON 15/4/2021	Change (%)
PFIZER	5103.35	5155.15	1.02	157375	185500	17.87
MINDTREE	2060.75	2074.25	0.66	2246400	2642400	17.63
WIPRO	420.8	433.05	2.91	35609600	41740800	17.22
SAIL	91.4	93.1	1.86	119814000	139479000	16.41
BANKNIFTY	31865.6	32206.95	1.07	1815025	2028700	11.77
LALPATHLAB	2958	2946.65	-0.38	437250	483500	10.58
AUROPHARMA	912.1	918.9	0.75	8910200	9803950	10.03
SRTRANSFIN	1384.05	1379.8	-0.31	3256800	3576000	9.80
APOLLOTYRE	215.75	209.3	-2.99	10750000	11785000	9.63
PIIND	2454.15	2386.95	-2.74	407000	438250	7.68

TOP 10 OPEN INTEREST LOSER FOR THE SESSION

SCRIPS	CP AS ON 13/4/2021	CP AS ON 15/4/2021	Change (%)	OI AS ON 13/4/2021	OI AS ON 15/4/2021	Change (%)
TCS	3109.6	3221.6	3.60	8744100	7091100	-18.90
COFORGE	2900.35	3043.3	4.93	650250	589125	-9.40
LTI	4123.8	4046.25	-1.88	459600	421950	-8.19
ONGC	102.5	105.35	2.78	39816700	37275700	-6.38
PIDILITIND	1807	1824.95	0.99	1974500	1871500	-5.22
HDFCBANK	1404.6	1433.25	2.04	35173600	33476300	-4.83
IGL	522.7	524.85	0.41	5057250	4819375	-4.70
PFC	110.05	109.8	-0.23	35705800	34168200	-4.31
M&M	811.7	805.9	-0.71	9345000	8965600	-4.06
NMDC	139.05	141.6	1.83	47067500	45352300	-3.64

Technical Trend

Pivot Report– Nifty F&O

Symbol	Last Rate	Pivot	Support3	Support2	Support 1	Resist1	Resist2	Resist3
Aarti Industries Ltd.	1369.0	1366.0	1295.1	1317.7	1343.4	1391.6	1414.2	1439.9
ACC Ltd.	1836.7	1848.3	1716.2	1764.1	1800.4	1884.6	1932.5	1968.8
Adani Enterprises Ltd.	1130.0	1118.7	1029.0	1055.2	1092.6	1156.1	1182.3	1219.7
Adani Ports & Special Economic Zone Ltd.	750.4	743.3	702.6	713.8	732.1	761.6	772.8	791.1
Alembic Pharmaceuticals Ltd.	972.6	973.2	932.5	946.2	959.4	986.4	1000.1	1013.3
Alkem Laboratories Ltd.	2750.5	2738.0	2593.5	2637.5	2694.0	2794.4	2838.4	2894.9
Amara Raja Batteries Ltd.	801.9	800.1	768.8	778.6	790.3	811.8	821.6	833.3
Ambuja Cements Ltd.	295.2	298.2	276.5	284.7	290.0	303.5	311.7	317.0
Apollo Hospitals Enterprises Ltd.	2993.5	2978.3	2780.9	2841.6	2917.6	3054.2	3114.9	3190.9
Apollo Tyres Ltd.	208.4	209.7	193.8	199.5	204.0	214.2	219.9	224.4
Ashok Leyland Ltd.	112.0	112.3	105.0	107.5	109.8	114.6	117.1	119.4
Asian Paints Ltd.	2587.7	2572.8	2495.4	2516.2	2552.0	2608.5	2629.3	2665.1
Au Small Finance Bank Ltd.	1055.5	1066.5	965.0	1002.5	1029.0	1093.0	1130.5	1157.0
Aurobindo Pharma Ltd.	915.3	915.8	867.5	883.8	899.5	931.5	947.8	963.5
Axis Bank Ltd.	668.9	664.2	637.9	645.1	657.0	676.0	683.2	695.1
Bajaj Auto Ltd.	3597.5	3593.1	3401.1	3463.6	3530.6	3660.0	3722.5	3789.5
Bajaj Finance	4660.3	4658.8	4383.7	4474.9	4567.6	4751.5	4842.7	4935.4
Bajaj Finserv Ltd.	9739.7	9723.6	9376.1	9486.6	9613.1	9850.1	9960.6	10087.1
Balkrishna Industries Ltd.	1678.5	1666.6	1587.6	1610.0	1644.2	1700.8	1723.2	1757.4
Bandhan Bank Ltd.	326.2	327.4	303.2	311.7	318.9	334.6	343.1	350.3
BANK NIFTY	32112.8	31902.1	30836.4	31121.4	31617.1	32397.8	32682.8	33178.5
Bank of Baroda	68.3	68.0	63.5	64.9	66.6	69.7	71.1	72.8
Bata India Ltd.	1317.1	1311.4	1270.7	1282.3	1299.7	1328.8	1340.4	1357.8
Berger Paints India Ltd.	727.5	723.2	695.0	703.0	715.2	735.5	743.5	755.7
Bharat Electronics Ltd.	128.5	127.5	120.1	122.2	125.4	130.7	132.8	136.0
Bharat Forge Ltd.	575.1	577.1	518.8	538.9	557.0	595.1	615.2	633.3
Bharat Heavy Electricals Ltd.	46.1	46.1	42.8	43.9	45.0	47.1	48.2	49.3
Bharat Petroleum Corporation Ltd.	404.9	408.2	386.9	395.1	400.0	413.1	421.3	426.2
Bharti Airtel Ltd.	539.4	538.6	515.1	522.7	531.0	546.9	554.5	562.8
Biocon Ltd.	404.6	405.5	387.2	393.6	399.1	411.0	417.4	422.9
Bosch Ltd.	13647.6	13696.4	13234.5	13404.7	13526.2	13817.9	13988.1	14109.6
Britannia Industries Ltd.	3692.7	3721.9	3516.9	3595.0	3643.8	3770.7	3848.8	3897.6
Cadila Healthcare Ltd.	504.7	501.3	462.8	474.5	489.6	516.4	528.1	543.2
Canara Bank	135.8	136.2	127.4	130.5	133.1	138.8	141.9	144.5
Cholamandalam Investment and Finance Company	535.3	533.2	507.3	515.2	525.3	543.3	551.2	561.3
Cipla Ltd.	914.2	907.8	848.8	866.3	890.3	931.8	949.3	973.3
City Union Bank Ltd.	162.0	162.1	152.1	155.5	158.7	165.4	168.8	172.0
Coal India Ltd	128.3	128.7	122.7	124.8	126.5	130.4	132.5	134.2
Coforge Ltd.	3045.1	2995.7	2717.4	2793.7	2919.4	3121.4	3197.7	3323.4
Colgate Palmolive (India) Ltd.	1555.5	1550.7	1502.9	1517.2	1536.3	1569.8	1584.1	1603.2
Container Corporation of India Ltd.	564.5	569.8	527.7	543.5	554.0	580.3	596.1	606.6
Cummins India Ltd.	848.6	845.6	806.1	818.3	833.4	860.7	872.9	888.0
Dabur India Ltd.	572.1	569.9	546.6	553.7	562.9	579.1	586.2	595.4
Deepak Nitrite	1608.2	1593.7	1512.6	1534.8	1571.5	1630.3	1652.5	1689.2
Divi's Laboratories Ltd.	3783.4	3766.3	3588.3	3641.9	3712.7	3837.0	3890.6	3961.4
DLF Ltd.	248.0	250.9	230.3	238.1	243.1	255.9	263.7	268.7
Dr. Lal Pathlabs Ltd.	2936.2	2965.7	2712.5	2806.7	2871.5	3030.5	3124.7	3189.5
Dr. Reddy's Laboratories Ltd.	4845.6	4835.2	4705.3	4745.2	4795.4	4885.4	4925.3	4975.5
Eicher Motors Ltd.	2412.6	2426.8	2251.9	2314.9	2363.8	2475.7	2538.7	2587.6
Escorts Ltd.	1217.9	1208.4	1134.0	1155.6	1186.8	1239.5	1261.1	1292.3
Exide Industries Ltd.	177.7	178.2	172.5	174.6	176.1	179.8	181.9	183.4

Technical Trend

Symbol	Last Rate	Pivot	Support3	Support2	Support 1	Resist1	Resist2	Resist3
Federal Bank Ltd.	75.9	75.7	71.1	72.6	74.2	77.4	78.9	80.5
GAIL (India) Ltd.	140.6	139.5	132.4	134.4	137.5	142.6	144.6	147.7
Glenmark Pharmaceuticals Ltd.	537.0	534.2	474.4	493.4	515.2	556.0	575.0	596.8
GMR Infrastructure Ltd.	24.0	24.0	23.2	23.5	23.7	24.2	24.5	24.7
Godrej Consumer Products Ltd.	736.6	731.8	705.9	713.0	724.8	743.6	750.7	762.5
Godrej Properties Ltd.	1347.8	1326.9	1222.0	1250.0	1298.9	1375.8	1403.8	1452.7
Granules India	317.6	320.2	300.4	307.9	312.7	325.0	332.5	337.3
Grasim Industries Ltd.	1349.3	1358.1	1241.2	1283.1	1316.2	1391.1	1433.0	1466.1
Gujarat Gas Co. Ltd.	528.7	529.2	512.4	518.2	523.4	534.4	540.2	545.4
Havell's India Ltd.	1010.2	1017.4	962.6	983.2	996.7	1030.9	1051.5	1065.0
HCL Technologies Ltd.	991.9	981.8	932.9	945.8	968.9	1004.8	1017.7	1040.8
HDFC Asset Management Company Ltd.	2949.5	2921.3	2779.8	2817.5	2883.5	2987.3	3025.0	3091.0
HDFC Bank Ltd.	1430.1	1419.3	1356.1	1373.6	1401.8	1447.5	1465.0	1493.2
HDFC Life Insurance Company Ltd.	694.5	698.7	658.0	673.0	683.7	709.4	724.4	735.1
Hero MotoCorp Ltd.	2862.6	2857.5	2755.0	2787.5	2825.0	2895.0	2927.5	2965.0
Hindalco Industries Ltd.	353.6	356.7	329.6	339.7	346.6	363.7	373.8	380.7
Hindustan Petroleum Corporation Ltd.	237.2	234.6	222.0	225.3	231.2	240.5	243.8	249.7
Hindustan Unilever Ltd.	2460.7	2459.6	2346.3	2383.7	2422.2	2498.1	2535.5	2574.0
Housing Development Finance	2547.2	2531.7	2446.4	2469.7	2508.4	2570.4	2593.7	2632.4
I T C Ltd.	206.7	207.7	200.5	203.3	205.0	209.4	212.2	213.9
ICICI Bank Ltd.	575.2	568.7	538.1	546.1	560.7	583.3	591.3	605.9
ICICI Lombard General Insurance Company Ltd.	1386.6	1372.3	1287.8	1311.2	1348.9	1410.0	1433.4	1471.1
ICICI Prudential Life Insurance	456.0	454.3	427.0	435.6	445.8	464.5	473.1	483.3
IDFC First Bank Ltd.	52.5	52.7	48.7	50.1	51.3	53.9	55.3	56.5
Indiabulls Housing Finance	165.0	165.9	149.5	155.3	160.1	170.7	176.5	181.3
Indian Oil Corporation Ltd.	90.1	89.5	86.4	87.3	88.7	90.9	91.8	93.2
Indian Railway Catering & Tourism	1608.1	1610.0	1543.2	1566.1	1587.1	1631.0	1653.9	1674.9
Indraprastha Gas Ltd.	525.0	521.8	498.9	505.5	515.2	531.5	538.1	547.8
Indus Towers Ltd.	251.5	248.9	234.1	238.1	244.8	255.6	259.6	266.3
IndusInd Bank Ltd.	858.4	861.1	795.9	818.6	838.5	881.0	903.7	923.6
Info Edge (India) Ltd.	4580.5	4524.0	4182.9	4277.7	4429.1	4675.4	4770.2	4921.6
Infosys Ltd.	1360.8	1349.1	1285.3	1302.7	1331.7	1378.1	1395.5	1424.5
Interglobe Aviation	1609.9	1598.5	1522.6	1544.1	1577.0	1631.3	1652.8	1685.7
Jindal Steel & Power Ltd.	414.3	413.4	383.9	393.5	403.9	423.8	433.4	443.8
JSW Steel Ltd.	629.1	629.7	587.4	601.7	615.4	643.4	657.7	671.4
Jubilant Foodworks Limited	2771.3	2760.7	2644.8	2679.9	2725.6	2806.4	2841.5	2887.2
Kotak Mahindra Bank Ltd.	1773.3	1778.5	1690.5	1721.6	1747.4	1804.3	1835.4	1861.2
L&T Finance Holdings Ltd.	93.6	93.5	87.8	89.7	91.6	95.4	97.3	99.2
L&T Technology Services	2756.9	2729.5	2527.5	2585.7	2671.3	2815.1	2873.3	2958.9
Larsen & Toubro Infotech	4045.2	4039.7	3818.3	3890.3	3967.7	4117.1	4189.1	4266.5
Larsen & Toubro Ltd.	1374.7	1374.6	1325.1	1341.6	1358.1	1391.1	1407.6	1424.1
LIC Housing Finance Ltd.	389.9	390.5	360.9	370.9	380.4	400.0	410.0	419.5
Lupin Ltd.	1050.1	1042.3	991.1	1005.6	1027.8	1064.5	1079.0	1101.2
Mahanagar Gas Ltd	1083.7	1091.8	1022.2	1048.1	1065.9	1109.6	1135.5	1153.3
Mahindra & Mahindra Financial	173.9	173.6	158.1	163.2	168.5	178.9	184.0	189.3
Mahindra & Mahindra Ltd.	805.1	799.7	766.8	776.0	790.5	814.3	823.5	838.0
Manappuram Finance Limited	145.6	146.1	137.3	140.4	143.0	148.7	151.8	154.4
Marico Ltd.	423.3	421.9	410.6	413.9	418.6	426.6	429.9	434.6
Maruti Suzuki India Ltd.	6644.3	6680.7	6218.7	6384.9	6514.6	6810.4	6976.6	7106.3
Max Financial Services Ltd.	876.5	870.2	829.0	840.6	858.5	888.1	899.7	917.6

Technical Trend

Symbol	Last Rate	Pivot	Support3	Support2	Support 1	Resist1	Resist2	Resist3
Motherson Sumi Systems Ltd.	207.9	209.2	196.3	201.0	204.5	212.6	217.3	220.8
MphasiS Ltd.	1700.0	1692.6	1552.7	1596.9	1648.4	1744.1	1788.3	1839.8
MRF Ltd.	80980.5	81310.2	78220.3	79360.2	80170.3	82120.3	83260.2	84070.3
Muthoot Finance	1153.1	1157.7	1085.1	1110.9	1132.0	1178.8	1204.6	1225.7
National Aluminium Co. Ltd.	58.1	57.5	54.1	55.1	56.6	59.0	60.0	61.5
Navin Fluorine International Ltd.	2968.1	2968.4	2762.7	2831.4	2899.7	3036.7	3105.4	3173.7
Nestle India Ltd.	16875.7	17016.9	16008.8	16391.9	16633.8	17258.8	17641.9	17883.8
Nippon Life India Asset Management Ltd.	332.7	331.4	314.4	319.6	326.2	338.0	343.2	349.8
NMDC Ltd.	141.3	140.8	134.0	136.1	138.7	143.4	145.5	148.1
NTPC Ltd.	101.4	101.2	95.7	97.5	99.4	103.1	104.9	106.8
Oil & Natural Gas Corporation Ltd.	105.1	105.2	100.7	102.3	103.7	106.6	108.2	109.6
Page Industries	29843.8	29523.7	27774.9	28251.1	29047.5	30320.1	30796.3	31592.7
Petronet LNG Ltd.	222.1	223.7	213.7	217.6	219.8	226.0	229.9	232.1
Pfizer Ltd.	5135.2	5103.4	4784.8	4880.4	5007.8	5230.8	5326.4	5453.8
PI Industries Limited	2378.1	2415.2	2167.9	2262.7	2320.4	2472.9	2567.7	2625.4
Pidilite Industries Ltd.	1823.8	1810.9	1738.0	1758.0	1790.9	1843.8	1863.8	1896.7
Piramal Enterprises	1716.5	1712.2	1630.5	1656.3	1686.4	1742.3	1768.1	1798.2
Power Finance Corporation Ltd.	109.5	109.7	104.2	106.1	107.8	111.4	113.3	115.0
Power Grid Corporation of India Ltd.	207.8	208.8	201.8	204.4	206.1	210.5	213.1	214.8
Punjab National Bank	34.8	34.8	33.0	33.6	34.2	35.4	36.0	36.6
PVR Limited	1061.9	1063.3	1021.9	1036.2	1049.0	1076.2	1090.5	1103.3
RBL Bank	189.7	190.5	170.1	177.2	183.4	196.7	203.8	210.0
REC Ltd.	128.1	128.9	120.1	123.3	125.7	131.3	134.5	136.9
Reliance Industries Ltd.	1944.3	1939.4	1869.9	1891.4	1917.9	1965.9	1987.4	2013.9
S&P CNX NIFTY	14581.5	14510.7	14179.7	14266.4	14424.0	14668.3	14755.0	14912.6
SBI Life Insurance Company Ltd.	908.7	903.6	873.1	881.6	895.1	917.1	925.6	939.1
Shree Cement Ltd.	30305.4	30238.5	28198.8	28856.4	29580.9	30963.0	31620.6	32345.1
Shriram Transport Finance Co. Ltd.	1380.7	1360.0	1254.4	1282.7	1331.7	1409.0	1437.3	1486.3
Siemens Ltd.	1816.7	1787.0	1653.0	1687.8	1752.2	1851.4	1886.2	1950.6
SRF Ltd.	5997.9	6022.6	5725.3	5832.7	5915.3	6105.2	6212.6	6295.2
State Bank of India	342.7	342.1	325.2	330.7	336.7	348.1	353.6	359.6
Steel Authority of India Ltd.	92.8	92.7	84.6	87.2	90.0	95.5	98.1	100.9
Sun Pharmaceutical Industries Ltd.	633.3	633.8	611.0	618.8	626.0	641.0	648.8	656.0
Sun TV Network Ltd.	464.3	464.9	441.6	449.6	456.9	472.2	480.2	487.5
Tata Chemicals Ltd.	749.0	746.6	704.4	717.7	733.3	762.3	775.6	791.2
Tata Consultancy Services Ltd.	3219.0	3181.2	2975.4	3031.4	3125.2	3275.0	3331.0	3424.8
Tata Consumer Products Ltd.	659.3	660.2	619.5	633.3	646.3	673.2	687.0	700.0
Tata Motors Ltd.	303.5	302.5	286.4	291.5	297.5	308.5	313.6	319.6
Tata Power Co. Ltd.	94.2	94.7	89.3	91.3	92.7	96.1	98.1	99.5
Tata Steel Ltd.	898.2	896.4	849.3	864.4	881.3	913.3	928.4	945.3
Tech Mahindra Ltd.	993.2	990.4	935.5	952.9	973.0	1010.5	1027.9	1048.0
The Ramco Cements Ltd.	1006.3	1016.8	880.1	929.2	967.7	1055.4	1104.5	1143.0
Titan Company Ltd.	1538.6	1536.2	1479.0	1497.3	1517.9	1556.9	1575.2	1595.8
Torrent Pharmaceuticals Ltd.	2565.0	2587.4	2439.4	2496.2	2530.6	2621.8	2678.6	2713.0
Torrent Power Ltd.	395.5	397.5	383.8	389.0	392.3	400.8	406.0	409.3
Trent Ltd.	740.1	733.6	690.1	702.4	721.3	752.5	764.8	783.7
TVS Motor Company Ltd.	542.6	542.3	512.3	522.2	532.4	552.5	562.4	572.6
UltraTech Cement Ltd.	6539.3	6544.3	6082.3	6238.0	6388.6	6695.0	6850.7	7001.3
United Breweries Ltd.	1101.8	1101.4	1072.3	1081.9	1091.8	1111.4	1121.0	1130.9
United Spirits Ltd.	522.2	522.7	504.5	510.7	516.5	528.5	534.7	540.5
UPL Ltd.	607.4	609.6	568.7	583.1	595.2	621.7	636.1	648.2
Vedanta Ltd	225.4	223.5	212.7	215.7	220.5	228.3	231.3	236.1
Vodafone Idea Ltd.	9.0	8.9	8.3	8.5	8.7	9.2	9.4	9.6
Voltas Ltd.	947.7	949.2	915.8	927.5	937.6	959.3	971.0	981.1
Wipro Ltd.	430.7	426.7	399.5	407.3	419.0	438.4	446.2	457.9
Zee Entertainment Enterprises Ltd	189.2	188.2	180.3	182.6	185.9	191.5	193.8	197.1

**Disclaimer Appendix****Analyst s holding in the Stock : Nil****Analyst s Certification:**

We analysts and the authors of this report, hereby certify that all of the views expressed in this research report accurately reflect our personal views about any and all of the subject issuer s or securities. We also certify that no part of our compensation was, is, or will be directly or indirectly related to the specific recommendation s or view s in this report. Analysts aren't registered as research analysts by FINRA and might not be an associated person of the BP Equities Pvt. Ltd. Institutional Equities.

General Disclaimer

This report has been prepared by the research department of BP EQUITIES Pvt. Ltd, is for information purposes only. This report is not construed as an offer to sell or the solicitation of an offer to buy or sell any security in any jurisdiction where such an offer or solicitation would be illegal.

BP EQUITIES Pvt. Ltd have exercised due diligence in checking the correctness and authenticity of the information contained herein, so far as it relates to current and historical information, but do not guarantee its accuracy or completeness. The opinions expressed are our current opinions as of the date appearing in the material and may be subject to change from time to time. Prospective investors are cautioned that any forward looking statement are not predictions and are subject to change without prior notice.

Recipients of this material should rely on their own investigations and take their own professional advice. BP EQUITIES Pvt. Ltd or any of its affiliates or employees shall not be in any way responsible for any loss or damage that may arise to any person from any inadvertent error in the information contained in this report. BP EQUITIES Pvt. Ltd. or any of its affiliates or employees do not provide, at any time, any express or implied warranty of any kind, regarding any matter pertaining to this report, including without limitation the implied warranties of merchantability, fitness for a particular purpose, and non-infringement. The recipients of this report should rely on their own investigations.

BP EQUITIES Pvt. Ltd and/or its affiliates and/or employees may have interests/ positions, financial or otherwise in the securities mentioned in this report. Opinions expressed are our current opinions as of the date appearing on this material only. While we endeavor to update on a reasonable basis the information discussed in this material, there may be regulatory, compliance, or other reasons that prevent us from doing so.

This report is not directed to or intended for display, downloading, printing, reproducing or for distribution to or use by any person in any locality, state and country or other jurisdiction where such distribution, publication or use would be contrary to the law or regulation or would subject to BP EQUITIES Pvt. Ltd or any of its affiliates to any registration or licensing requirement within such jurisdiction.

Corporate Office:

4th floor,
Rustom Bldg,
29, Veer Nariman Road, Fort,
Mumbai-400001
Phone- +91 22 6159 6464
Fax-+91 22 6159 6160
Website- www.bpwealth.com

Registered Office:

24/26, 1st Floor, Cama Building,
Dalal street, Fort,
Mumbai-400001
BP Equities Pvt. Ltd.
CIN No: U67120MH1997PTC107392