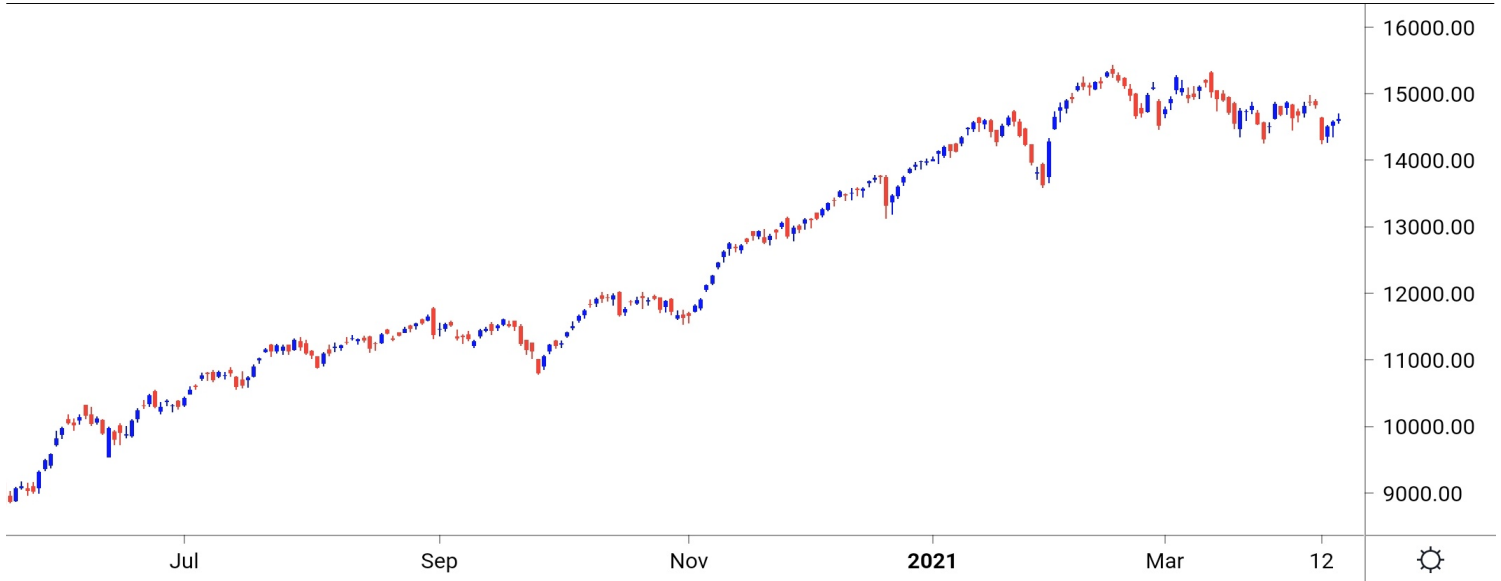


NIFTY SPOT : IMMEDIATE SUPPORT AT 14500-14430



Source: Falcon, BP Equities Research

Nifty spot closed 0.25% higher at 14617. Index opened on a flat note and remained strong for most of the time while in last hour witnessed strong selling and gave up its early gains to close the day near opening price. Following SGXNIFTY, index is expected to open lower by 150-180 points. Post gap down support comes at 14500-14430-14350 while resistance is seen at 14580-14650-14700.

Intraday Nifty

Resistance - 14580-14650-14700

Support - 14500-14430-14350

BANK NIFTY SPOT : IMMEDIATE SUPPORT AT 31900-31700



Source: Falcon, BP Equities Research

Bank Nifty spot closed 0.42% lower at 31977. Banknifty opened on a flat note and traded in a narrow range throughout the day closing session near days low. Post gap down opening the support comes at 31500-31300-31000. While on the higher side resistance is placed at 31700-31900-32200.

Intraday Bank Nifty

Resistance - 31700-31900-32200

Support - 31500-31300-31000

Technical Trend

INTRADAY TRADER'S PICKS

Sr.No.	STOCK	CLOSE	Target 1	Target 2	Stop Loss	RECOMMENDATION
1	SUNPHARMA	646	658	666	642	BUY ABOVE 650
2	HEROMOTOCO	2894	2930	2960	2870	BUY ABOVE 2900
3	HDFC	2574	2605	2630	2555	BUY ABOVE 2580
4	ICICIBANK	567	558	550	573	SELL BELOW 565
5	LT	1359	1340	1325	1370	SELL BELOW 1355

DERIVATIVES

INDICES SNAPSHOT

SCRIPS	CP AS ON 15/4/2021	CP AS ON 16/4/2021	Change (%)	OI AS ON 15/4/2021	OI AS ON 16/4/2021	Change (%)
BANKNIFTY	32206.95	32075.65	-0.41	2028700	1977125	-2.54
FINNIFTY	15414.1	15400.3	-0.09	18360	15760	-14.16
NIFTY	14592	14645.7	0.37	12134325	12950025	6.72

Derivative Highlights

- ⇒ Nifty Future closed with a Premium of 7 points v/s a Premium of 19 points in the previous session.
- ⇒ Nifty Future Open Interest Increased by 6.72%. Bank Nifty Future Open Interest Decreased by 2.54%.
- ⇒ Nifty PCR - OI Increased from 0.81 to 1.03, Nifty Bank PCR - OI Decreased from 1.15 to 0.87.
- ⇒ FII Bought Rs 437.51 crore while DII Bought Rs 657.55 crore in the Cash Segment. FII Bought Rs 54.7 crore in Index Futures, Bought Rs 3127.9 crore in index options, while in Future they Bought Rs 1049.12 crore and Sold Rs 203.92 in stock options.
- ⇒ Among Index Option space, Highest Open Interest concentration was seen in 14000 & 13500 Strike price among the PE options. Where as among CE Options Highest Open Interest Concentration was seen in 15000 & 15500 Strike price.
- ⇒ Highest Open Interest Build Up among the PE options was seen in 14600 & 14500 Strike price. Among CE options highest build up was seen in 15500 & 14800 Strike price.

OI Concentration

PUT OPTION		CALL OPTION	
Strike Price	Open Interest	Strike Price	Open Interest
14000	2275425	15000	2681550
13500	2156475	15500	2631375
13000	1927650	14700	1726725
14500	1920375	14800	1725450
14400	1662525	15100	1573050

Highest Change in OI

PUT OPTION		CALL OPTION	
Strike Price	Change in OI	Strike Price	Change in OI
14600	1239900	15500	1028250
14500	837450	14800	927600
12800	763050	15300	765450
13800	749100	15000	734775
14700	738225	14700	678375

MWPL

SCRIPS	OI %	BAN
SUNTV	97%	YES
SAIL	93%	YES
IBULHSGFIN	92%	NO
CANBK	84%	NO
BHEL	80%	NO
ADANI PORTS	78%	NO
PNB	76%	NO
TATACHEM	76%	NO
NATIONALUM	75%	NO
TATAPOWER	73%	NO

Technical Trend

Stock Analysis

Long Build-up	Long Unwinding	Short Build-up	Short Covering
ACC	MFSL	DEEPAKNTR	BPCL
ADANIPOINTS		HDFCLIFE	DIVISLAB
BERGEPAIN		ICICIPRULI	DRREDDY
BIOCON		IGL	HEROMOTOCO
CIPLA		PETRONET	MOTHERSUMI
GLENMARK		PVR	PAGEIND

STATISTICS

Highest Premium

SCRIPS	Premium %	Price change %
ZEEL	0.59	2.51
CIPLA	0.52	2.61
ICICIPRULI	0.51	-1.09
GAIL	0.47	-0.71
NAM-INDIA	0.46	1.35

Highest Discount

SCRIPS	Premium %	Price change %
MUTHOOTFIN	-1.48	1.31
PVR	-0.68	-0.96
NESTLEIND	-0.52	2.23
GODREJPROP	-0.43	-0.81
HCLTECH	-0.22	2.10

TOP 5 VOLUME GAINER FOR THE SESSION

SCRIPS	CP AS ON 15/4/2021	CP AS ON 16/4/2021	Change (%)	VOL AS ON 15/4/2021	VOL AS ON 16/4/2021	Change (%)
NAVINFLUOR	2973.5	3145.15	5.77	562	2553	354.27
AARTIIND	1370.85	1423.6	3.85	433	1624	275.06
APLLTD	975.15	1005.15	3.08	298	908	204.70
WIPRO	433.05	469.65	8.45	12452	37529	201.39
BIOCON	406.2	414.45	2.03	1531	4509	194.51

TOP 5 VOLUME LOSER FOR THE SESSION

SCRIPS	CP AS ON 15/4/2021	CP AS ON 16/4/2021	Change (%)	VOL AS ON 15/4/2021	VOL AS ON 16/4/2021	Change (%)
SAIL	93.1	91.75	-1.45	5703	186	-96.74
IDEA	9	8.85	-1.67	1753	640	-63.49
GODREJPROP	1341.3	1331.05	-0.76	1610	620	-61.49
SRTRANSFIN	1379.8	1375.45	-0.32	4440	1725	-61.15
RECLTD	128.65	127.6	-0.82	1504	647	-56.98

Technical Trend

TOP 10 OPEN INTEREST GAINER FOR THE SESSION

SCRIPS	CP AS ON 15/4/2021	CP AS ON 16/4/2021	Change (%)	OI AS ON 15/4/2021	OI AS ON 16/4/2021	Change (%)
NAM-INDIA	332.75	338.75	1.80	1267200	1977600	56.06
NAVINFLUOR	2973.5	3145.15	5.77	261000	319950	22.59
AARTIIND	1370.85	1423.6	3.85	414375	498525	20.31
SIEMENS	1817.2	1848.35	1.71	831050	958650	15.35
CADILAHC	506.75	529.4	4.47	12784200	14577200	14.03
HINDALCO	354.85	371	4.55	29674300	33316400	12.27
CIPLA	914.75	942.95	3.08	12663300	14110200	11.43
BIOCON	406.2	414.45	2.03	15520400	16974000	9.37
WIPRO	433.05	469.65	8.45	41740800	45638400	9.34
PIIND	2386.95	2501.65	4.81	438250	478500	9.18

TOP 10 OPEN INTEREST LOSER FOR THE SESSION

SCRIPS	CP AS ON 15/4/2021	CP AS ON 16/4/2021	Change (%)	OI AS ON 15/4/2021	OI AS ON 16/4/2021	Change (%)
JSWSTEEL	629.6	619.95	-1.53	37983600	35340300	-6.96
TORNTPOWER	397.05	408.6	2.91	2274000	2124000	-6.60
ESCORTS	1219.9	1246.15	2.15	2004200	1889800	-5.71
SBILIFE	909.95	915	0.55	4891500	4697250	-3.97
UBL	1104.75	1102.75	-0.18	1385300	1330700	-3.94
HDFCBANK	1433.25	1431.5	-0.12	33476300	32192050	-3.84
TATAPOWER	94.45	97.2	2.91	138226500	133231500	-3.61
MGL	1089.1	1106.6	1.61	1738200	1678200	-3.45
NESTLEIND	16838.1	17161.45	1.92	308000	297550	-3.39
PAGEIND	29843.2	30219.7	1.26	55740	53850	-3.39

Technical Trend

Pivot Report– Nifty F&O

Symbol	Last Rate	Pivot	Support3	Support2	Support 1	Resist1	Resist2	Resist3
Aarti Industries Ltd.	1425.3	1415.1	1282.5	1323.3	1374.3	1466.1	1506.9	1557.9
ACC Ltd.	1881.8	1874.8	1785.0	1812.6	1847.2	1909.3	1936.9	1971.5
Adani Enterprises Ltd.	1159.0	1154.3	1036.7	1074.3	1116.7	1196.7	1234.3	1276.7
Adani Ports & Special Economic Zone Ltd.	755.5	764.5	682.2	712.6	734.1	785.9	816.3	837.8
Alembic Pharmaceuticals Ltd.	1001.2	995.5	917.4	941.5	971.4	1025.4	1049.5	1079.4
Alkem Laboratories Ltd.	2790.8	2781.6	2672.1	2705.5	2748.2	2824.2	2857.6	2900.3
Amara Raja Batteries Ltd.	809.4	808.0	776.3	786.4	797.9	819.5	829.6	841.1
Ambuja Cements Ltd.	300.7	300.5	285.5	290.5	295.6	305.6	310.6	315.7
Apollo Hospitals Enterprises Ltd.	3061.0	3042.7	2933.3	2963.7	3012.3	3091.3	3121.7	3170.3
Apollo Tyres Ltd.	208.8	208.4	200.6	203.1	205.9	211.2	213.7	216.5
Ashok Leyland Ltd.	113.7	113.8	108.0	110.0	111.8	115.7	117.7	119.5
Asian Paints Ltd.	2663.7	2646.3	2487.3	2534.5	2599.1	2710.9	2758.1	2822.7
Au Small Finance Bank Ltd.	1077.1	1078.9	1018.7	1039.4	1058.2	1097.7	1118.4	1137.2
Aurobindo Pharma Ltd.	953.0	940.8	874.2	892.3	922.7	971.2	989.3	1019.7
Axis Bank Ltd.	669.2	668.9	649.7	656.0	662.6	675.5	681.8	688.4
Bajaj Auto Ltd.	3634.7	3620.7	3496.4	3533.2	3583.9	3671.5	3708.3	3759.0
Bajaj Finance	4616.6	4632.2	4474.4	4532.2	4574.4	4674.4	4732.2	4774.4
Bajaj Finserv Ltd.	9824.8	9823.3	9651.5	9708.3	9766.5	9881.5	9938.3	9996.5
Balkrishna Industries Ltd.	1687.4	1684.3	1647.7	1658.9	1673.1	1698.6	1709.8	1724.0
Bandhan Bank Ltd.	322.7	324.4	309.4	315.0	318.8	328.2	333.8	337.6
BANK NIFTY	31977.4	32071.5	31404.5	31658.2	31817.8	32231.1	32484.8	32644.4
Bank of Baroda	67.4	68.0	64.0	65.5	66.4	68.9	70.4	71.3
Bata India Ltd.	1323.6	1321.8	1299.3	1306.2	1314.9	1330.4	1337.3	1346.0
Berger Paints India Ltd.	735.3	739.0	710.0	720.9	728.1	746.2	757.1	764.3
Bharat Electronics Ltd.	128.0	127.7	122.0	123.8	125.9	129.8	131.6	133.7
Bharat Forge Ltd.	586.8	586.4	553.1	564.1	575.4	597.8	608.8	620.1
Bharat Heavy Electricals Ltd.	46.2	46.3	44.2	45.0	45.6	46.9	47.7	48.3
Bharat Petroleum Corporation Ltd.	413.8	413.7	385.8	395.0	404.4	423.1	432.3	441.7
Bharti Airtel Ltd.	540.8	541.0	531.6	534.8	537.8	543.9	547.1	550.1
Biocon Ltd.	412.9	410.3	382.8	391.1	402.0	421.2	429.5	440.4
Bosch Ltd.	13856.0	13797.7	13464.1	13555.9	13705.9	13947.7	14039.5	14189.5
Britannia Industries Ltd.	3696.5	3702.3	3613.3	3644.9	3670.7	3728.1	3759.7	3785.5
Cadila Healthcare Ltd.	527.1	519.2	478.7	489.5	508.3	538.0	548.8	567.6
Canara Bank	134.2	135.0	127.3	130.2	132.2	137.0	139.9	141.9
Cholamandalam Investment and Finance Company	540.6	542.8	522.1	529.7	535.2	548.3	555.9	561.4
Cipla Ltd.	938.1	931.1	884.5	897.7	917.9	951.2	964.4	984.6
City Union Bank Ltd.	161.9	162.6	156.4	158.7	160.3	164.1	166.4	168.0
Coal India Ltd	127.9	128.3	123.8	125.5	126.7	129.5	131.2	132.4
Coforge Ltd.	3172.0	3143.3	2875.9	2955.5	3063.7	3251.6	3331.2	3439.4
Colgate Palmolive (India) Ltd.	1570.9	1567.6	1537.8	1546.7	1558.8	1579.7	1588.6	1600.7
Container Corporation of India Ltd.	568.0	569.3	538.7	549.3	558.7	578.7	589.3	598.7
Cummins India Ltd.	849.1	851.4	812.7	826.3	837.7	862.8	876.4	887.8
Dabur India Ltd.	575.0	576.0	559.1	565.1	570.0	580.9	586.9	591.8
Deepak Nitrite	1588.0	1598.3	1528.6	1555.3	1571.6	1614.6	1641.3	1657.6
Divi's Laboratories Ltd.	3821.9	3800.1	3643.6	3688.5	3755.2	3866.8	3911.7	3978.4
DLF Ltd.	252.5	251.3	239.3	242.9	247.7	256.1	259.7	264.5
Dr. Lal Pathlabs Ltd.	2920.2	2949.8	2765.3	2836.6	2878.4	2991.6	3062.9	3104.7
Dr. Reddy's Laboratories Ltd.	4893.3	4882.8	4700.8	4758.0	4825.6	4950.4	5007.6	5075.2
Eicher Motors Ltd.	2434.9	2439.9	2355.0	2385.0	2409.9	2464.8	2494.8	2519.7
Escorts Ltd.	1246.9	1235.3	1158.8	1180.4	1213.7	1268.5	1290.1	1323.4
Exide Industries Ltd.	177.5	178.0	173.5	175.2	176.3	179.1	180.8	181.9

Technical Trend

Symbol	Last Rate	Pivot	Support3	Support2	Support 1	Resist1	Resist2	Resist3
Federal Bank Ltd.	76.4	76.3	72.5	73.7	75.1	77.7	78.9	80.3
GAIL (India) Ltd.	139.6	140.4	135.3	137.3	138.4	141.6	143.6	144.7
Glenmark Pharmaceuticals Ltd.	571.9	558.5	486.7	506.2	539.0	591.4	610.9	643.7
GMR Infrastructure Ltd.	24.0	23.9	23.3	23.5	23.7	24.2	24.4	24.6
Godrej Consumer Products Ltd.	731.9	732.6	717.4	722.7	727.3	737.2	742.5	747.1
Godrej Properties Ltd.	1336.9	1340.3	1299.8	1314.4	1325.7	1351.5	1366.1	1377.4
Granules India	327.9	326.0	307.1	312.8	320.3	333.6	339.3	346.8
Grasim Industries Ltd.	1353.2	1358.1	1297.1	1319.1	1336.1	1375.1	1397.1	1414.1
Gujarat Gas Co. Ltd.	543.4	541.0	507.3	517.7	530.6	553.8	564.2	577.1
Havell's India Ltd.	1010.5	1016.6	976.6	992.0	1001.2	1025.9	1041.3	1050.5
HCL Technologies Ltd.	1012.8	1008.0	976.9	985.7	999.2	1021.5	1030.3	1043.8
HDFC Asset Management Company Ltd.	2929.8	2943.2	2855.4	2889.1	2909.5	2963.6	2997.3	3017.7
HDFC Bank Ltd.	1428.7	1432.4	1398.3	1410.9	1419.8	1441.3	1453.9	1462.8
HDFC Life Insurance Company Ltd.	690.7	693.7	673.9	681.5	686.1	698.3	705.9	710.5
Hero MotoCorp Ltd.	2894.9	2886.0	2760.4	2799.3	2847.1	2933.8	2972.7	3020.5
Hindalco Industries Ltd.	370.0	366.4	332.5	342.6	356.3	380.1	390.2	403.9
Hindustan Petroleum Corporation Ltd.	236.6	237.1	229.0	231.9	234.2	239.5	242.4	244.7
Hindustan Unilever Ltd.	2458.9	2459.3	2400.7	2420.3	2439.6	2478.6	2498.2	2517.5
Housing Development Finance Corporation Ltd.	2574.1	2570.2	2507.7	2527.3	2550.7	2593.6	2613.2	2636.6
I T C Ltd.	208.0	207.9	203.8	205.2	206.6	209.3	210.7	212.1
ICICI Bank Ltd.	567.0	569.6	547.8	556.0	561.5	575.1	583.3	588.8
ICICI Lombard General Insurance Company Ltd.	1417.2	1406.7	1332.4	1353.7	1385.4	1438.4	1459.7	1491.4
ICICI Prudential Life Insurance Company	451.1	454.4	424.4	435.5	443.3	462.2	473.3	481.1
IDFC First Bank Ltd.	53.7	53.5	50.7	51.6	52.6	54.5	55.4	56.4
Indiabulls Housing Finance	165.8	166.1	159.2	161.6	163.7	168.2	170.6	172.7
Indian Oil Corporation Ltd.	90.2	90.2	87.2	88.2	89.2	91.2	92.2	93.2
Indian Railway Catering & Tourism Corp Ltd.	1627.5	1623.9	1577.5	1591.8	1609.6	1641.7	1656.0	1673.8
Indraprastha Gas Ltd.	515.2	520.2	488.7	500.9	508.0	527.3	539.5	546.6
Indus Towers Ltd.	259.6	258.4	241.8	246.9	253.3	264.7	269.8	276.2
IndusInd Bank Ltd.	863.0	862.0	837.1	845.1	854.0	870.9	878.9	887.8
Info Edge (India) Ltd.	4674.2	4656.4	4417.8	4491.4	4582.8	4747.8	4821.4	4912.8
Infosys Ltd.	1353.8	1357.1	1319.0	1332.8	1343.3	1367.5	1381.3	1391.8
Interglobe Aviation	1582.9	1591.9	1527.3	1551.9	1567.4	1607.4	1632.0	1647.5
Jindal Steel & Power Ltd.	414.0	416.8	395.7	403.7	408.8	421.9	429.9	435.0
JSW Steel Ltd.	619.4	624.1	593.3	605.1	612.3	631.2	643.0	650.2
Jubliant Foodworks Limited	2820.7	2808.2	2700.4	2732.2	2776.4	2852.4	2884.2	2928.4
Kotak Mahindra Bank Ltd.	1764.1	1770.8	1725.3	1742.7	1753.4	1781.5	1798.9	1809.6
L&T Finance Holdings Ltd.	93.2	93.7	89.6	91.1	92.2	94.8	96.3	97.4
L&T Technology Services	2725.6	2740.5	2622.2	2666.6	2696.1	2769.9	2814.3	2843.8
Larsen & Toubro Infotech	4089.9	4105.7	3913.8	3983.0	4036.5	4159.2	4228.4	4281.9
Larsen & Toubro Ltd.	1359.2	1369.3	1307.2	1331.3	1345.2	1383.2	1407.3	1421.2
LIC Housing Finance Ltd.	392.3	391.4	381.4	384.4	388.4	395.4	398.4	402.4
Lupin Ltd.	1055.9	1056.2	1017.5	1030.5	1043.2	1068.8	1081.8	1094.5
Mahanagar Gas Ltd	1103.7	1096.9	1059.9	1070.0	1086.8	1113.7	1123.8	1140.6
Mahindra & Mahindra Financial Services Ltd.	171.9	172.9	165.9	168.6	170.2	174.6	177.3	178.9
Mahindra & Mahindra Ltd.	821.7	820.9	769.3	786.3	804.0	838.6	855.6	873.3
Manappuram Finance Limited	147.2	147.2	141.4	143.4	145.3	149.1	151.1	153.0
Marico Ltd.	424.0	424.7	416.7	419.6	421.8	426.9	429.8	432.0
Maruti Suzuki India Ltd.	6648.1	6679.7	6395.7	6500.9	6574.5	6753.3	6858.5	6932.1
Max Financial Services Ltd.	872.0	878.3	837.8	853.4	862.7	887.6	903.2	912.5

Technical Trend

Symbol	Last Rate	Pivot	Support3	Support2	Support 1	Resist1	Resist2	Resist3
Motherson Sumi Systems Ltd.	212.0	211.3	199.9	203.5	207.7	215.5	219.1	223.3
MphasiS Ltd.	1708.3	1702.5	1620.8	1646.1	1677.2	1733.6	1758.9	1790.0
MRF Ltd.	81366.0	81442.5	79903.5	80442.0	80904.0	81904.5	82443.0	82905.0
Muthoot Finance	1168.1	1163.4	1108.7	1125.4	1146.7	1184.7	1201.4	1222.7
National Aluminium Co. Ltd.	59.0	59.2	55.5	56.8	57.9	60.3	61.6	62.7
Navin Fluorine International Ltd.	3135.5	3085.8	2783.7	2867.8	3001.7	3219.7	3303.8	3437.7
Nestle India Ltd.	17252.1	17150.0	16492.7	16677.8	16964.9	17437.1	17622.2	17909.3
Nippon Life India Asset Management Ltd.	337.2	336.2	326.3	329.2	333.2	340.2	343.1	347.1
NMDC Ltd.	142.5	143.3	137.9	140.0	141.2	144.5	146.6	147.8
NTPC Ltd.	102.5	102.0	98.6	99.6	101.0	103.4	104.4	105.8
Oil & Natural Gas Corporation Ltd.	107.3	106.5	101.4	102.8	105.1	108.7	110.1	112.4
Page Industries	30217.8	29989.3	28528.7	28939.4	29578.6	30628.5	31039.2	31678.4
Petronet LNG Ltd.	220.6	221.6	213.2	216.4	218.5	223.7	226.9	229.0
Pfizer Ltd.	5218.6	5206.9	4939.7	5024.9	5121.7	5303.7	5388.9	5485.7
PI Industries Limited	2495.4	2467.4	2311.5	2354.1	2424.7	2538.0	2580.6	2651.2
Pidilite Industries Ltd.	1823.7	1826.7	1765.7	1787.0	1805.4	1845.0	1866.3	1884.7
Piramal Enterprises	1720.1	1725.2	1650.9	1677.4	1698.7	1746.6	1773.1	1794.4
Power Finance Corporation Ltd.	109.1	109.2	106.9	107.7	108.4	109.9	110.7	111.4
Power Grid Corporation of India Ltd.	209.9	210.6	198.9	203.1	206.5	214.0	218.2	221.6
Punjab National Bank	34.8	34.9	33.5	34.0	34.4	35.3	35.8	36.2
PVR Limited	1051.7	1050.3	993.1	1011.7	1031.7	1070.2	1088.8	1108.8
RBL Bank	187.8	188.9	180.8	183.9	185.8	190.8	193.9	195.8
REC Ltd.	127.1	127.6	123.9	125.3	126.2	128.5	129.9	130.8
Reliance Industries Ltd.	1932.1	1936.2	1899.0	1912.7	1922.4	1945.9	1959.6	1969.3
S&P CNX NIFTY	14617.8	14624.8	14413.3	14486.1	14552.0	14690.7	14763.5	14829.4
SBI Life Insurance Company Ltd.	914.2	913.1	892.7	899.2	906.7	920.6	927.1	934.6
Shree Cement Ltd.	30821.1	30622.0	29322.7	29689.4	30255.3	31187.9	31554.6	32120.5
Shriram Transport Finance Co. Ltd.	1378.0	1379.5	1334.7	1350.2	1364.1	1393.4	1408.9	1422.8
Siemens Ltd.	1847.8	1842.4	1744.6	1775.4	1811.6	1878.6	1909.4	1945.6
SRF Ltd.	6127.3	6091.8	5851.5	5919.8	6023.5	6195.5	6263.8	6367.5
State Bank of India	339.9	341.4	330.4	334.5	337.2	344.1	348.2	350.9
Steel Authority of India Ltd.	91.6	92.4	86.8	88.9	90.3	93.7	95.8	97.2
Sun Pharmaceutical Industries Ltd.	646.1	640.8	608.0	617.2	631.6	655.3	664.5	678.9
Sun TV Network Ltd.	476.1	474.9	441.4	452.2	464.1	486.8	497.6	509.5
Tata Chemicals Ltd.	753.1	757.4	713.9	729.8	741.5	769.0	784.9	796.6
Tata Consultancy Services Ltd.	3195.2	3208.3	3105.1	3143.9	3169.5	3233.9	3272.7	3298.3
Tata Consumer Products Ltd.	671.3	669.4	646.0	653.1	662.2	678.5	685.6	694.7
Tata Motors Ltd.	310.0	308.4	286.9	293.5	301.8	316.6	323.2	331.5
Tata Power Co. Ltd.	97.2	96.4	90.9	92.5	94.8	98.7	100.3	102.6
Tata Steel Ltd.	890.3	897.0	851.4	868.8	879.5	907.7	925.1	935.8
Tech Mahindra Ltd.	1010.3	1006.6	982.2	989.1	999.7	1017.2	1024.1	1034.7
The Ramco Cements Ltd.	1012.9	1012.4	958.1	976.0	994.5	1030.9	1048.8	1067.3
Titan Company Ltd.	1549.1	1546.2	1502.6	1516.2	1532.6	1562.6	1576.2	1592.6
Torrent Pharmaceuticals Ltd.	2619.5	2600.9	2491.8	2522.0	2570.7	2649.6	2679.8	2728.5
Torrent Power Ltd.	408.7	405.4	382.3	388.9	398.8	415.3	421.9	431.8
Trent Ltd.	743.7	743.5	706.4	718.7	731.2	756.0	768.3	780.8
TVS Motor Company Ltd.	551.1	549.2	516.5	526.8	538.9	561.3	571.6	583.7
UltraTech Cement Ltd.	6715.2	6670.6	6278.2	6394.1	6554.7	6831.1	6947.0	7107.6
United Breweries Ltd.	1100.0	1099.8	1071.5	1080.8	1090.4	1109.4	1118.7	1128.3
United Spirits Ltd.	519.1	521.4	506.7	512.4	515.7	524.7	530.4	533.7
UPL Ltd.	611.8	610.9	586.1	594.1	602.9	619.7	627.7	636.5
Vedanta Ltd	231.8	230.4	214.5	219.3	225.6	236.7	241.5	247.8
Vodafone Idea Ltd.	8.9	8.9	8.6	8.7	8.8	8.9	9.0	9.1
Voltas Ltd.	957.1	956.4	917.7	930.4	943.7	969.7	982.4	995.7
Wipro Ltd.	469.2	459.6	407.9	422.0	445.6	483.2	497.3	520.9
Zee Entertainment Enterprises Ltd	194.0	193.4	182.1	185.7	189.8	197.5	201.1	205.2

**Disclaimer Appendix****Analyst s holding in the Stock : Nil****Analyst s Certification:**

We analysts and the authors of this report, hereby certify that all of the views expressed in this research report accurately reflect our personal views about any and all of the subject issuer s or securities. We also certify that no part of our compensation was, is, or will be directly or indirectly related to the specific recommendation s or view s in this report. Analysts aren't registered as research analysts by FINRA and might not be an associated person of the BP Equities Pvt. Ltd. Institutional Equities.

General Disclaimer

This report has been prepared by the research department of BP EQUITIES Pvt. Ltd, is for information purposes only. This report is not construed as an offer to sell or the solicitation of an offer to buy or sell any security in any jurisdiction where such an offer or solicitation would be illegal.

BP EQUITIES Pvt. Ltd have exercised due diligence in checking the correctness and authenticity of the information contained herein, so far as it relates to current and historical information, but do not guarantee its accuracy or completeness. The opinions expressed are our current opinions as of the date appearing in the material and may be subject to change from time to time. Prospective investors are cautioned that any forward looking statement are not predictions and are subject to change without prior notice.

Recipients of this material should rely on their own investigations and take their own professional advice. BP EQUITIES Pvt. Ltd or any of its affiliates or employees shall not be in any way responsible for any loss or damage that may arise to any person from any inadvertent error in the information contained in this report. BP EQUITIES Pvt. Ltd. or any of its affiliates or employees do not provide, at any time, any express or implied warranty of any kind, regarding any matter pertaining to this report, including without limitation the implied warranties of merchantability, fitness for a particular purpose, and non-infringement. The recipients of this report should rely on their own investigations.

BP EQUITIES Pvt. Ltd and/or its affiliates and/or employees may have interests/ positions, financial or otherwise in the securities mentioned in this report. Opinions expressed are our current opinions as of the date appearing on this material only. While we endeavor to update on a reasonable basis the information discussed in this material, there may be regulatory, compliance, or other reasons that prevent us from doing so.

This report is not directed to or intended for display, downloading, printing, reproducing or for distribution to or use by any person in any locality, state and country or other jurisdiction where such distribution, publication or use would be contrary to the law or regulation or would subject to BP EQUITIES Pvt. Ltd or any of its affiliates to any registration or licensing requirement within such jurisdiction.

Corporate Office:

4th floor,
Rustom Bldg,
29, Veer Nariman Road, Fort,
Mumbai-400001
Phone- +91 22 6159 6464
Fax-+91 22 6159 6160
Website- www.bpwealth.com

Registered Office:

24/26, 1st Floor, Cama Building,
Dalal street, Fort,
Mumbai-400001
BP Equities Pvt. Ltd.
CIN No: U67120MH1997PTC107392