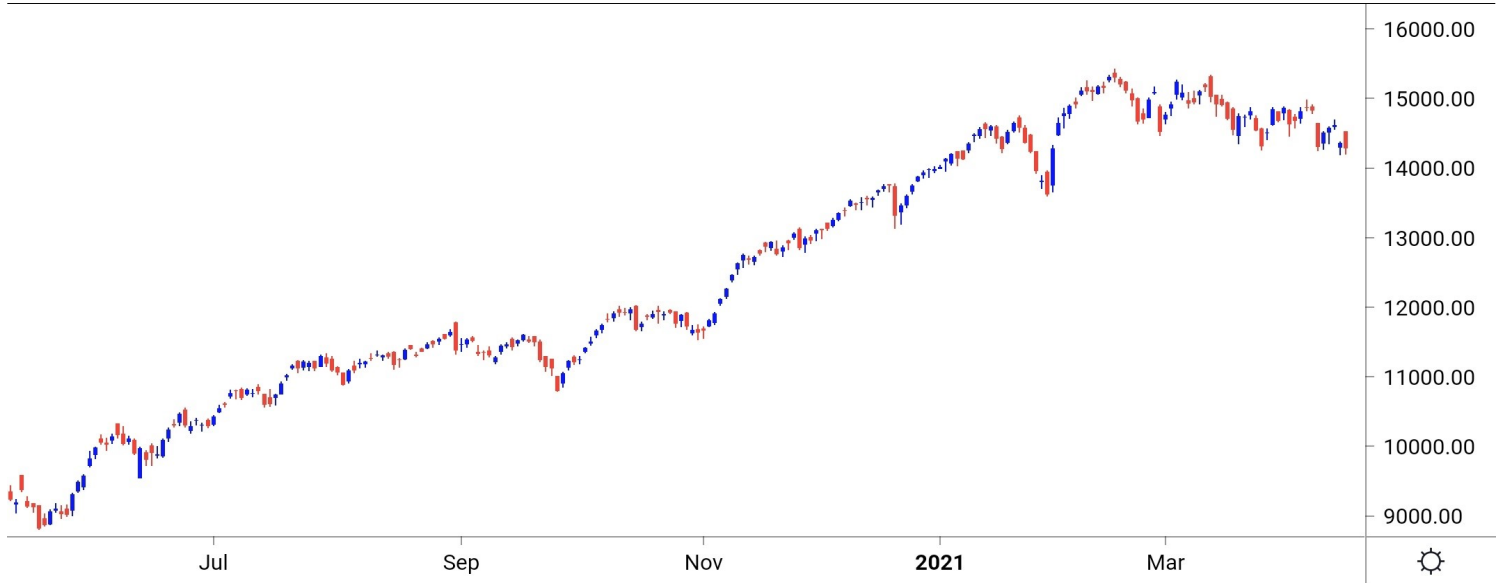


NIFTY SPOT : IMMEDIATE SUPPORT AT 14200-14130



Source: Falcon, BP Equities Research

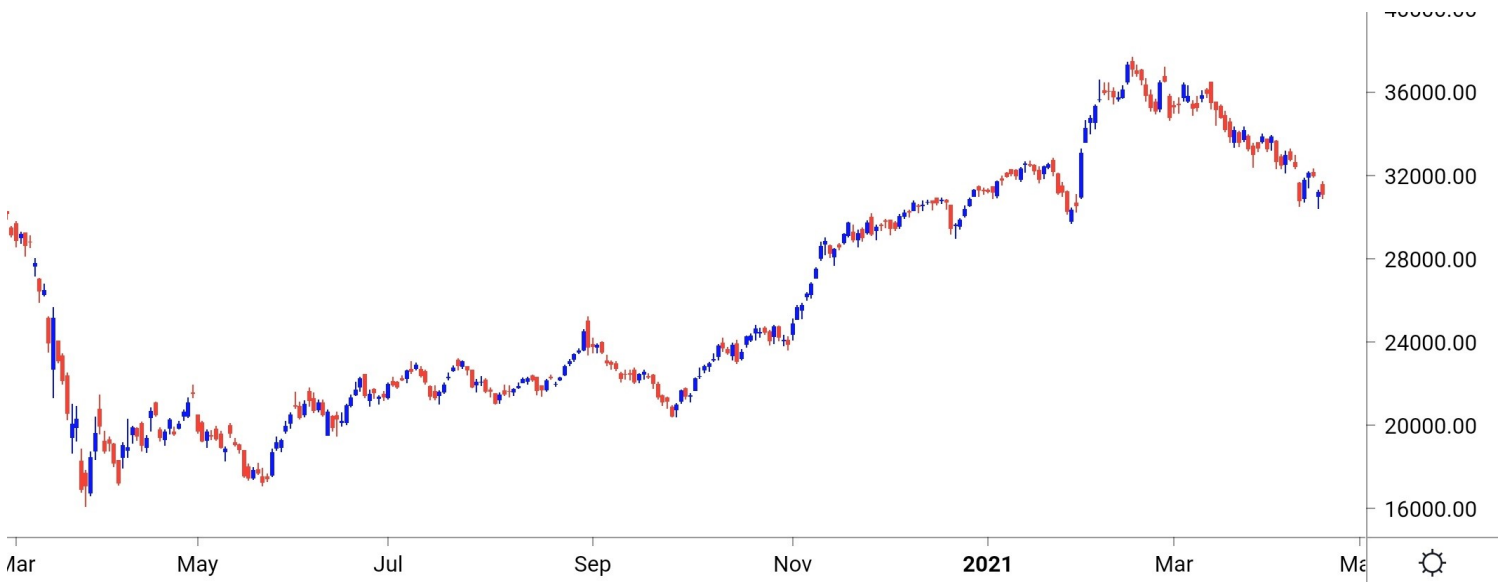
Nifty spot closed 0.44% lower at 14296. Index opened with wide gap up but failed to capitalise its early gains and witnessed sharp selling pressure to close to session near days low with minor loss. Going ahead index has an immediate support around 14200-14130-14050. On the higher side resistance comes at 13330-14400-14500.

Intraday Nifty

Resistance - 14330-14400-14500

Support - 14200-14130-14050

BANK NIFTY SPOT : IMMEDIATE SUPPORT AT 30850-30650



Source: Falcon, BP Equities Research

Bank Nifty spot closed 0.31% lower at 31112. Banknifty opened with wide gap up but failed to hold on its early gains and remained under pressure throughout the day to close the session near days low with minor loss. Going forward index has an immediate resistance around 31300-31600-31800. On the other hand support is placed around 30850-30650-30400.

Intraday Bank Nifty

Resistance - 31300-31600-31800

Support - 30850-30650-30400

Technical Trend

INTRADAY TRADER'S PICKS

| Sr.No. | STOCK | CLOSE | Target 1 | Target 2 | Stop Loss | RECOMMENDATION |
|--------|-----------|-------|----------|----------|-----------|------------------------|
| 1 | MARUTI | 6646 | 6730 | 6800 | 6590 | BUY ABOVE 6660 |
| 2 | SUNPHARMA | 645 | 656 | 664 | 640 | BUY ABOVE 648 |
| 3 | TATASTEEL | 894 | 908 | 918 | 888 | BUY ABOVE 898 |
| 4 | HDFC | 2415 | 2380 | 2355 | 2430 | SELL BELOW 2405 |
| 5 | ACC | 1825 | 1795 | 1775 | 1835 | SELL BELOW 1815 |

DERIVATIVES

INDICES SNAPSHOT

| SCRIPS | CP AS ON 19/4/2021 | CP AS ON 20/4/2021 | Change (%) | OI AS ON 19/4/2021 | OI AS ON 20/4/2021 | Change (%) |
|-----------|--------------------|--------------------|------------|--------------------|--------------------|------------|
| BANKNIFTY | 31239.7 | 31120.55 | -0.38 | 1756475 | 1811550 | 3.14 |
| FINNIFTY | 15027.45 | 14945.75 | -0.54 | 18600 | 17320 | -6.88 |
| NIFTY | 14374.15 | 14296.2 | -0.54 | 12292725 | 12510825 | 1.77 |

Derivative Highlights

- ⇒ Nifty Future closed with a Discount of 6 points v/s a Premium of 25 points in the previous session.
- ⇒ Nifty Future Open Interest Increased by 1.77%. Bank Nifty Future Open Interest Increased by 3.14%.
- ⇒ Nifty PCR - OI Decreased from 0.84 to 0.71, Nifty Bank PCR - OI Decreased from 1.00 to 0.78.
- ⇒ FII Sold Rs 1082.33 crore while DII Bought Rs 1323.01 crore in the Cash Segment. FII Bought Rs 307.22 crore in Index Futures, Sold Rs 2477.34 crore in index options, while in Future they Sold Rs 442.01 crore and Bought Rs 18.5 in stock options.
- ⇒ Among Index Option space, Highest Open Interest concentration was seen in 14000 & 14300 Strike price among the PE options. Where as among CE Options Highest Open Interest Concentration was seen in 15000 & 14500 Strike price.
- ⇒ Highest Open Interest Build Up among the PE options was seen in 13800 & 13500 Strike price. Among CE options highest build up was seen in 14500 & 14600 Strike price.

OI Concentration

| PUT OPTION | | CALL OPTION | |
|--------------|---------------|--------------|---------------|
| Strike Price | Open Interest | Strike Price | Open Interest |
| 14000 | 3231150 | 15000 | 4056375 |
| 14300 | 2606250 | 14500 | 3865200 |
| 13500 | 2512050 | 14700 | 3534075 |
| 14200 | 2076900 | 14600 | 3160950 |
| 13800 | 2062500 | 14800 | 3055875 |

Highest Change in OI

| PUT OPTION | | CALL OPTION | |
|--------------|--------------|--------------|--------------|
| Strike Price | Change in OI | Strike Price | Change in OI |
| 13800 | 581550 | 14500 | 1275000 |
| 13500 | 424725 | 14600 | 1089300 |
| 14150 | 277425 | 14550 | 740400 |
| 13750 | 253050 | 14650 | 708150 |
| 13700 | 129375 | 14700 | 569250 |

MWPL

| SCRIPS | OI % | BAN |
|-------------|------|-----|
| SUNTV | 92% | YES |
| IBULHSGFIN | 90% | NO |
| CANBK | 86% | NO |
| SAIL | 86% | YES |
| BHEL | 80% | NO |
| ADANI PORTS | 79% | NO |
| PNB | 77% | NO |
| NATIONALUM | 76% | NO |
| TATACHEM | 75% | NO |
| TATAPOWER | 72% | NO |

Technical Trend

Stock Analysis

| Long Build-up | Long Unwinding | Short Build-up | Short Covering |
|---------------|----------------|----------------|----------------|
| BALKRISIND | ASIANPAINT | ACC | APOLLOHOSP |
| CHOLAFIN | BOSCHLTD | ADANIPTS | BAJFINANCE |
| GODREJPROP | DABUR | AMBUJACEM | BHARTIARTL |
| HDFCLIFE | GODREJCP | CONCOR | DRREDDY |
| JINDALSTEL | LTI | DLF | HEROMOTOCO |
| LUPIN | MGL | ITC | INDUSINDBK |

STATISTICS

Highest Premium

| SCRIPS | Premium % | Price change % |
|------------|-----------|----------------|
| PIIND | 0.73 | 2.59 |
| IDEA | 0.59 | 0.00 |
| BANKBARODA | 0.40 | -0.86 |
| TORNTPHARM | 0.37 | 0.33 |
| FEDERALBNK | 0.35 | 0.21 |

Highest Discount

| SCRIPS | Premium % | Price change % |
|------------|-----------|----------------|
| PVR | -2.78 | 6.68 |
| MUTHOOTFIN | -1.37 | -0.07 |
| UBL | -0.86 | 1.55 |
| NESTLEIND | -0.59 | 0.03 |
| GODREJPROP | -0.33 | 1.89 |

TOP 5 VOLUME GAINER FOR THE SESSION

| SCRIPS | CP AS ON 16/4/2021 | CP AS ON 19/4/2021 | Change (%) | VOL AS ON 16/4/2021 | VOL AS ON 19/4/2021 | Change (%) |
|------------|--------------------|--------------------|------------|---------------------|---------------------|------------|
| ICICIPRULI | 452.75 | 479.45 | 5.90 | 2017 | 14426 | 615.22 |
| BALKRISIND | 1683.65 | 1696.05 | 0.74 | 781 | 2961 | 279.13 |
| TATACONSUM | 664.3 | 679.15 | 2.24 | 2334 | 6675 | 185.99 |
| SBILIFE | 908.5 | 901.85 | -0.73 | 2119 | 5960 | 181.26 |
| NAM-INDIA | 326 | 328.25 | 0.69 | 272 | 752 | 176.47 |

TOP 5 VOLUME LOSER FOR THE SESSION

| SCRIPS | CP AS ON 16/4/2021 | CP AS ON 19/4/2021 | Change (%) | VOL AS ON 16/4/2021 | VOL AS ON 19/4/2021 | Change (%) |
|-----------|--------------------|--------------------|------------|---------------------|---------------------|------------|
| SAIL | 89.1 | 88.8 | -0.34 | 396 | 67 | -83.08 |
| MINDTREE | 2099.95 | 2045.8 | -2.58 | 6926 | 2227 | -67.85 |
| SUNTV | 459.75 | 466.35 | 1.44 | 221 | 85 | -61.54 |
| HINDPETRO | 231.4 | 232.5 | 0.48 | 3714 | 1723 | -53.61 |
| GLENMARK | 579.45 | 572.95 | -1.12 | 12818 | 6007 | -53.14 |

Technical Trend

TOP 10 OPEN INTEREST GAINER FOR THE SESSION

| SCRIPS | CP AS ON 16/4/2021 | CP AS ON 19/4/2021 | Change (%) | OI AS ON 16/4/2021 | OI AS ON 19/4/2021 | Change (%) |
|------------|--------------------|--------------------|------------|--------------------|--------------------|------------|
| ICICIPRULI | 452.75 | 479.45 | 5.90 | 8437500 | 10309500 | 22.19 |
| PFIZER | 5350.45 | 5509.4 | 2.97 | 229875 | 279375 | 21.53 |
| PVR | 998.6 | 1047.25 | 4.87 | 2177857 | 2625150 | 20.54 |
| BAJAJFINSV | 9505.85 | 9826.35 | 3.37 | 609250 | 692250 | 13.62 |
| NAM-INDIA | 326 | 328.25 | 0.69 | 1974400 | 2236800 | 13.29 |
| GUJGASLTD | 532.15 | 542.4 | 1.93 | 806250 | 901250 | 11.78 |
| ACC | 1883.1 | 1825.95 | -3.03 | 3265500 | 3549500 | 8.70 |
| SBILIFE | 908.5 | 901.85 | -0.73 | 4663500 | 5051250 | 8.31 |
| AMBUJACEM | 301.3 | 295.4 | -1.96 | 16428000 | 17769000 | 8.16 |
| TITAN | 1518.8 | 1521.8 | 0.20 | 5470500 | 5836500 | 6.69 |

TOP 10 OPEN INTEREST LOSER FOR THE SESSION

| SCRIPS | CP AS ON 16/4/2021 | CP AS ON 19/4/2021 | Change (%) | OI AS ON 16/4/2021 | OI AS ON 19/4/2021 | Change (%) |
|------------|--------------------|--------------------|------------|--------------------|--------------------|------------|
| MPHASIS | 1705.05 | 1658.1 | -2.75 | 769925 | 670150 | -12.96 |
| PIIND | 2484.6 | 2560.85 | 3.07 | 459250 | 424250 | -7.62 |
| M&MFIN | 166.05 | 170.9 | 2.92 | 18324000 | 17048000 | -6.96 |
| FINNIFTY | 15027.45 | 14945.75 | -0.54 | 18600 | 17320 | -6.88 |
| ASHOKLEY | 109.9 | 112.6 | 2.46 | 37962000 | 35379000 | -6.80 |
| AUROPHARMA | 969.5 | 987.05 | 1.81 | 10390250 | 9708400 | -6.56 |
| IRCTC | 1612.95 | 1639.25 | 1.63 | 1599000 | 1498250 | -6.30 |
| MINDTREE | 2099.95 | 2045.8 | -2.58 | 2539200 | 2380800 | -6.24 |
| CADILAHC | 528.2 | 556.55 | 5.37 | 15554000 | 14603600 | -6.11 |
| WIPRO | 472.9 | 469.8 | -0.66 | 43363200 | 41209600 | -4.97 |

Technical Trend

Pivot Report– Nifty F&O

| Symbol | Last Rate | Pivot | Support3 | Support2 | Support 1 | Resist1 | Resist2 | Resist3 |
|--|-----------|---------|----------|----------|-----------|---------|---------|---------|
| Aarti Industries Ltd. | 1434.7 | 1431.3 | 1377.4 | 1394.2 | 1414.5 | 1451.5 | 1468.3 | 1488.6 |
| ACC Ltd. | 1825.8 | 1871.9 | 1593.9 | 1701.9 | 1763.9 | 1933.9 | 2041.9 | 2103.9 |
| Adani Enterprises Ltd. | 1142.8 | 1148.5 | 1066.7 | 1095.9 | 1119.3 | 1172.0 | 1201.2 | 1224.6 |
| Adani Ports & Special Economic Zone Ltd. | 720.5 | 725.5 | 669.1 | 689.6 | 705.0 | 740.9 | 761.4 | 776.8 |
| Alembic Pharmaceuticals Ltd. | 995.8 | 1000.2 | 946.1 | 965.6 | 980.7 | 1015.3 | 1034.8 | 1049.9 |
| Alkem Laboratories Ltd. | 2740.7 | 2750.9 | 2674.0 | 2703.1 | 2721.9 | 2769.7 | 2798.8 | 2817.6 |
| Amara Raja Batteries Ltd. | 800.9 | 805.2 | 777.4 | 788.1 | 794.5 | 811.6 | 822.3 | 828.7 |
| Ambuja Cements Ltd. | 295.7 | 300.7 | 266.1 | 279.3 | 287.5 | 308.9 | 322.1 | 330.3 |
| Apollo Hospitals Enterprises Ltd. | 3269.7 | 3253.5 | 3070.7 | 3126.2 | 3197.9 | 3325.2 | 3380.7 | 3452.4 |
| Apollo Tyres Ltd. | 202.2 | 203.7 | 190.9 | 195.7 | 198.9 | 207.0 | 211.8 | 215.0 |
| Ashok Leyland Ltd. | 112.9 | 112.6 | 107.4 | 109.1 | 111.0 | 114.5 | 116.2 | 118.1 |
| Asian Paints Ltd. | 2553.7 | 2562.4 | 2444.2 | 2486.5 | 2520.1 | 2596.0 | 2638.3 | 2671.9 |
| Au Small Finance Bank Ltd. | 1041.3 | 1038.8 | 987.5 | 1003.8 | 1022.5 | 1057.5 | 1073.8 | 1092.5 |
| Aurobindo Pharma Ltd. | 987.3 | 990.0 | 944.0 | 960.3 | 973.8 | 1003.5 | 1019.8 | 1033.3 |
| Axis Bank Ltd. | 651.8 | 652.3 | 623.5 | 633.3 | 642.5 | 661.5 | 671.3 | 680.5 |
| Bajaj Auto Ltd. | 3600.9 | 3593.4 | 3493.4 | 3524.2 | 3562.6 | 3631.8 | 3662.6 | 3701.0 |
| Bajaj Finance | 4613.7 | 4622.6 | 4402.4 | 4478.8 | 4546.2 | 4690.0 | 4766.4 | 4833.8 |
| Bajaj Finserv Ltd. | 9819.4 | 9788.3 | 9285.6 | 9442.8 | 9631.1 | 9976.6 | 10133.8 | 10322.1 |
| Balkrishna Industries Ltd. | 1690.8 | 1701.9 | 1598.7 | 1636.8 | 1663.8 | 1728.9 | 1767.0 | 1794.0 |
| Bandhan Bank Ltd. | 309.2 | 309.9 | 295.4 | 300.5 | 304.8 | 314.3 | 319.4 | 323.7 |
| BANK NIFTY | 31112.7 | 31245.1 | 29917.9 | 30404.4 | 30758.6 | 31599.3 | 32085.8 | 32440.0 |
| Bank of Baroda | 63.3 | 63.9 | 58.9 | 60.8 | 62.0 | 65.1 | 67.0 | 68.2 |
| Bata India Ltd. | 1297.7 | 1305.1 | 1238.8 | 1263.4 | 1280.5 | 1322.3 | 1346.9 | 1364.0 |
| Berger Paints India Ltd. | 709.5 | 713.4 | 683.4 | 694.7 | 702.1 | 720.8 | 732.1 | 739.5 |
| Bharat Electronics Ltd. | 124.3 | 125.2 | 118.8 | 121.2 | 122.8 | 126.8 | 129.2 | 130.8 |
| Bharat Forge Ltd. | 575.4 | 576.7 | 535.9 | 550.0 | 562.7 | 589.4 | 603.5 | 616.2 |
| Bharat Heavy Electricals Ltd. | 44.2 | 44.5 | 42.2 | 43.0 | 43.6 | 45.1 | 45.9 | 46.5 |
| Bharat Petroleum Corporation Ltd. | 408.1 | 409.6 | 396.3 | 401.2 | 404.7 | 413.0 | 417.9 | 421.4 |
| Bharti Airtel Ltd. | 530.2 | 531.0 | 514.0 | 519.9 | 525.1 | 536.2 | 542.1 | 547.3 |
| Biocon Ltd. | 401.2 | 403.0 | 383.8 | 390.8 | 396.0 | 408.1 | 415.1 | 420.3 |
| Bosch Ltd. | 13416.8 | 13470.2 | 12864.8 | 13084.4 | 13250.6 | 13636.4 | 13856.0 | 14022.2 |
| Britannia Industries Ltd. | 3729.9 | 3724.3 | 3633.1 | 3661.6 | 3695.8 | 3758.4 | 3786.9 | 3821.1 |
| Cadila Healthcare Ltd. | 556.3 | 552.6 | 500.1 | 516.4 | 536.3 | 572.6 | 588.9 | 608.8 |
| Canara Bank | 128.1 | 129.3 | 119.5 | 123.2 | 125.6 | 131.8 | 135.5 | 137.9 |
| Cholamandalam Investment and Finance Company | 538.8 | 543.7 | 502.3 | 517.8 | 528.3 | 554.2 | 569.7 | 580.2 |
| Cipla Ltd. | 949.3 | 952.3 | 912.9 | 927.0 | 938.2 | 963.4 | 977.5 | 988.7 |
| City Union Bank Ltd. | 158.3 | 159.1 | 154.0 | 156.0 | 157.1 | 160.2 | 162.2 | 163.3 |
| Coal India Ltd | 124.5 | 124.9 | 121.4 | 122.7 | 123.6 | 125.8 | 127.1 | 128.0 |
| Coforge Ltd. | 3010.0 | 3048.6 | 2789.0 | 2888.4 | 2949.2 | 3109.4 | 3208.8 | 3269.6 |
| Colgate Palmolive (India) Ltd. | 1521.8 | 1527.8 | 1465.5 | 1488.2 | 1505.0 | 1544.6 | 1567.3 | 1584.1 |
| Container Corporation of India Ltd. | 549.1 | 556.1 | 512.2 | 529.2 | 539.1 | 566.0 | 583.0 | 592.9 |
| Cummins India Ltd. | 833.4 | 837.6 | 789.4 | 806.8 | 820.1 | 850.9 | 868.3 | 881.6 |
| Dabur India Ltd. | 569.0 | 570.3 | 554.4 | 560.1 | 564.6 | 574.7 | 580.4 | 584.9 |
| Deepak Nitrite | 1559.9 | 1568.5 | 1495.6 | 1522.8 | 1541.3 | 1587.1 | 1614.3 | 1632.8 |
| Divi's Laboratories Ltd. | 3779.7 | 3792.9 | 3637.9 | 3694.0 | 3736.8 | 3835.7 | 3891.8 | 3934.6 |
| DLF Ltd. | 234.4 | 236.0 | 221.1 | 226.6 | 230.5 | 239.9 | 245.4 | 249.3 |
| Dr. Lal Pathlabs Ltd. | 2904.8 | 2922.2 | 2703.7 | 2782.4 | 2843.6 | 2983.4 | 3062.1 | 3123.3 |
| Dr. Reddy's Laboratories Ltd. | 5156.8 | 5152.3 | 4972.7 | 5031.1 | 5093.9 | 5215.2 | 5273.6 | 5336.4 |
| Eicher Motors Ltd. | 2340.0 | 2354.5 | 2218.9 | 2268.9 | 2304.5 | 2390.0 | 2440.0 | 2475.6 |
| Escorts Ltd. | 1210.6 | 1214.6 | 1144.4 | 1169.1 | 1189.9 | 1235.4 | 1260.1 | 1280.9 |
| Exide Industries Ltd. | 173.5 | 173.9 | 168.2 | 170.3 | 171.9 | 175.5 | 177.6 | 179.2 |

Technical Trend

| Symbol | Last Rate | Pivot | Support3 | Support2 | Support 1 | Resist1 | Resist2 | Resist3 |
|--|-----------|--------|----------|----------|-----------|---------|---------|---------|
| Federal Bank Ltd. | 72.1 | 72.8 | 68.2 | 70.0 | 71.0 | 73.8 | 75.6 | 76.6 |
| GAIL (India) Ltd. | 134.4 | 135.9 | 125.8 | 129.6 | 132.0 | 138.3 | 142.1 | 144.5 |
| Glenmark Pharmaceuticals Ltd. | 571.6 | 576.2 | 539.3 | 553.1 | 562.4 | 585.4 | 599.2 | 608.5 |
| GMR Infrastructure Ltd. | 23.1 | 23.1 | 21.8 | 22.3 | 22.7 | 23.5 | 24.0 | 24.4 |
| Godrej Consumer Products Ltd. | 725.7 | 725.7 | 701.4 | 709.5 | 717.6 | 733.8 | 741.9 | 750.0 |
| Godrej Properties Ltd. | 1327.6 | 1330.9 | 1270.9 | 1292.0 | 1309.8 | 1348.7 | 1369.8 | 1387.6 |
| Granules India | 334.6 | 337.2 | 304.5 | 316.3 | 325.4 | 346.3 | 358.1 | 367.2 |
| Grasim Industries Ltd. | 1291.9 | 1315.6 | 1166.1 | 1223.9 | 1257.9 | 1349.6 | 1407.4 | 1441.4 |
| Gujarat Gas Co. Ltd. | 543.1 | 544.3 | 510.8 | 522.4 | 532.7 | 554.7 | 566.3 | 576.6 |
| Havell's India Ltd. | 1004.8 | 1007.4 | 969.5 | 983.0 | 993.9 | 1018.3 | 1031.8 | 1042.7 |
| HCL Technologies Ltd. | 961.3 | 974.8 | 894.5 | 925.8 | 943.5 | 992.5 | 1023.8 | 1041.5 |
| HDFC Asset Management Company Ltd. | 2790.9 | 2807.0 | 2678.9 | 2727.0 | 2758.9 | 2838.9 | 2887.0 | 2918.9 |
| HDFC Bank Ltd. | 1391.4 | 1400.6 | 1332.3 | 1358.1 | 1374.8 | 1417.2 | 1443.0 | 1459.7 |
| HDFC Life Insurance Company Ltd. | 685.2 | 681.4 | 655.0 | 662.5 | 673.9 | 692.8 | 700.3 | 711.7 |
| Hero MotoCorp Ltd. | 2823.7 | 2824.5 | 2752.1 | 2776.5 | 2800.1 | 2848.1 | 2872.5 | 2896.1 |
| Hindalco Industries Ltd. | 359.4 | 361.8 | 335.2 | 344.9 | 352.1 | 369.1 | 378.8 | 386.0 |
| Hindustan Petroleum Corporation Ltd. | 232.7 | 232.9 | 227.5 | 229.4 | 231.0 | 234.6 | 236.5 | 238.1 |
| Hindustan Unilever Ltd. | 2397.5 | 2412.4 | 2296.6 | 2340.2 | 2368.8 | 2441.0 | 2484.6 | 2513.2 |
| Housing Development Finance Corporation Ltd. | 2415.9 | 2455.4 | 2228.9 | 2317.6 | 2366.7 | 2504.5 | 2593.2 | 2642.3 |
| I T C Ltd. | 203.6 | 204.4 | 197.2 | 199.9 | 201.7 | 206.2 | 208.9 | 210.7 |
| ICICI Bank Ltd. | 559.1 | 561.5 | 530.2 | 541.4 | 550.3 | 570.3 | 581.5 | 590.4 |
| ICICI Lombard General Insurance Company Ltd. | 1399.0 | 1394.4 | 1318.8 | 1342.5 | 1370.7 | 1422.6 | 1446.3 | 1474.5 |
| ICICI Prudential Life Insurance Company | 478.0 | 486.1 | 407.9 | 436.7 | 457.3 | 506.7 | 535.5 | 556.1 |
| IDFC First Bank Ltd. | 50.7 | 51.1 | 47.6 | 48.9 | 49.8 | 52.0 | 53.3 | 54.2 |
| Indiabulls Housing Finance | 165.1 | 165.4 | 157.7 | 160.4 | 162.7 | 167.7 | 170.4 | 172.7 |
| Indian Oil Corporation Ltd. | 87.8 | 88.4 | 84.1 | 85.7 | 86.8 | 89.4 | 91.0 | 92.1 |
| Indian Railway Catering & Tourism Corp Ltd. | 1640.1 | 1635.0 | 1588.1 | 1602.1 | 1621.1 | 1654.0 | 1668.0 | 1687.0 |
| Indraprastha Gas Ltd. | 504.2 | 506.1 | 484.1 | 492.1 | 498.1 | 512.1 | 520.1 | 526.1 |
| Indus Towers Ltd. | 256.0 | 257.3 | 234.4 | 242.5 | 249.2 | 264.0 | 272.1 | 278.8 |
| IndusInd Bank Ltd. | 845.0 | 850.0 | 810.4 | 825.2 | 835.1 | 859.9 | 874.7 | 884.6 |
| Info Edge (India) Ltd. | 4777.0 | 4754.0 | 4503.0 | 4579.0 | 4678.0 | 4853.0 | 4929.0 | 5028.0 |
| Infosys Ltd. | 1351.4 | 1357.6 | 1299.6 | 1321.0 | 1336.2 | 1372.8 | 1394.2 | 1409.4 |
| Interglobe Aviation | 1554.3 | 1547.7 | 1426.7 | 1464.9 | 1509.6 | 1592.4 | 1630.6 | 1675.3 |
| Jindal Steel & Power Ltd. | 431.6 | 428.8 | 401.8 | 409.9 | 420.7 | 439.6 | 447.7 | 458.5 |
| JSW Steel Ltd. | 620.6 | 621.3 | 596.1 | 604.7 | 612.7 | 629.3 | 637.9 | 645.9 |
| Jubliant Foodworks Limited | 2830.2 | 2831.1 | 2715.2 | 2754.1 | 2792.1 | 2869.1 | 2908.0 | 2946.0 |
| Kotak Mahindra Bank Ltd. | 1697.7 | 1705.2 | 1627.6 | 1656.0 | 1676.8 | 1726.1 | 1754.5 | 1775.3 |
| L&T Finance Holdings Ltd. | 90.8 | 90.9 | 84.6 | 86.8 | 88.8 | 92.9 | 95.1 | 97.1 |
| L&T Technology Services | 2608.7 | 2650.9 | 2398.9 | 2497.0 | 2552.8 | 2706.7 | 2804.8 | 2860.6 |
| Larsen & Toubro Infotech | 3969.3 | 4001.5 | 3678.0 | 3796.6 | 3882.9 | 4087.8 | 4206.4 | 4292.7 |
| Larsen & Toubro Ltd. | 1331.5 | 1329.6 | 1297.9 | 1307.8 | 1319.7 | 1341.4 | 1351.3 | 1363.2 |
| LIC Housing Finance Ltd. | 382.6 | 384.6 | 366.6 | 373.3 | 377.9 | 389.3 | 396.0 | 400.6 |
| Lupin Ltd. | 1089.8 | 1084.0 | 1033.1 | 1048.1 | 1069.0 | 1104.8 | 1119.8 | 1140.7 |
| Mahanagar Gas Ltd | 1076.4 | 1086.0 | 1023.8 | 1047.8 | 1062.1 | 1100.3 | 1124.3 | 1138.6 |
| Mahindra & Mahindra Financial Services Ltd. | 170.4 | 171.0 | 158.3 | 162.7 | 166.6 | 174.8 | 179.2 | 183.1 |
| Mahindra & Mahindra Ltd. | 811.2 | 811.0 | 780.1 | 790.3 | 800.7 | 821.4 | 831.6 | 842.0 |
| Manappuram Finance Limited | 141.8 | 143.3 | 132.7 | 136.7 | 139.3 | 145.8 | 149.8 | 152.4 |
| Marico Ltd. | 410.2 | 414.3 | 385.5 | 396.5 | 403.3 | 421.2 | 432.2 | 439.0 |
| Maruti Suzuki India Ltd. | 6646.7 | 6628.0 | 6457.1 | 6507.8 | 6577.2 | 6697.4 | 6748.1 | 6817.5 |
| Max Financial Services Ltd. | 848.4 | 858.3 | 792.5 | 817.8 | 833.1 | 873.6 | 898.9 | 914.2 |

Technical Trend

| Symbol | Last Rate | Pivot | Support3 | Support2 | Support 1 | Resist1 | Resist2 | Resist3 |
|---|-----------|---------|----------|----------|-----------|---------|---------|---------|
| Motherson Sumi Systems Ltd. | 204.4 | 205.4 | 196.1 | 199.6 | 202.0 | 207.8 | 211.3 | 213.7 |
| MphasiS Ltd. | 1657.7 | 1677.2 | 1538.7 | 1591.4 | 1624.5 | 1710.3 | 1763.0 | 1796.1 |
| MRF Ltd. | 79339.8 | 79563.1 | 76525.6 | 77612.5 | 78476.2 | 80426.8 | 81513.7 | 82377.4 |
| Muthoot Finance | 1142.0 | 1149.4 | 1088.2 | 1111.1 | 1126.5 | 1164.9 | 1187.8 | 1203.2 |
| National Aluminium Co. Ltd. | 56.6 | 57.1 | 52.7 | 54.3 | 55.5 | 58.3 | 59.9 | 61.1 |
| Navin Fluorine International Ltd. | 3013.0 | 3049.6 | 2812.5 | 2903.7 | 2958.4 | 3104.3 | 3195.5 | 3250.2 |
| Nestle India Ltd. | 17095.7 | 17135.3 | 16320.6 | 16605.4 | 16850.5 | 17380.4 | 17665.2 | 17910.3 |
| Nippon Life India Asset Management Ltd. | 327.7 | 328.7 | 315.2 | 320.0 | 323.9 | 332.5 | 337.3 | 341.2 |
| NMDC Ltd. | 137.6 | 138.3 | 131.4 | 133.9 | 135.8 | 140.2 | 142.7 | 144.6 |
| NTPC Ltd. | 99.1 | 99.4 | 95.1 | 96.6 | 97.8 | 100.6 | 102.1 | 103.3 |
| Oil & Natural Gas Corporation Ltd. | 102.9 | 103.4 | 98.9 | 100.6 | 101.7 | 104.5 | 106.2 | 107.3 |
| Page Industries | 30248.8 | 30204.6 | 28974.2 | 29369.6 | 29809.2 | 30644.2 | 31039.6 | 31479.2 |
| Petronet LNG Ltd. | 219.9 | 218.8 | 211.2 | 213.4 | 216.6 | 222.1 | 224.3 | 227.5 |
| Pfizer Ltd. | 5492.4 | 5497.9 | 5170.1 | 5281.2 | 5386.8 | 5603.5 | 5714.6 | 5820.2 |
| PI Industries Limited | 2542.0 | 2526.2 | 2294.9 | 2366.7 | 2454.4 | 2613.8 | 2685.6 | 2773.3 |
| Pidilite Industries Ltd. | 1773.1 | 1778.2 | 1716.7 | 1738.9 | 1756.0 | 1795.3 | 1817.5 | 1834.6 |
| Piramal Enterprises | 1704.0 | 1714.1 | 1591.5 | 1635.8 | 1669.9 | 1748.2 | 1792.5 | 1826.6 |
| Power Finance Corporation Ltd. | 105.6 | 106.2 | 100.6 | 102.7 | 104.1 | 107.7 | 109.8 | 111.2 |
| Power Grid Corporation of India Ltd. | 203.7 | 203.7 | 197.6 | 199.6 | 201.7 | 205.7 | 207.7 | 209.8 |
| Punjab National Bank | 33.7 | 33.8 | 32.5 | 33.0 | 33.3 | 34.1 | 34.6 | 34.9 |
| PVR Limited | 1077.1 | 1069.6 | 939.0 | 980.0 | 1028.5 | 1118.1 | 1159.1 | 1207.6 |
| RBL Bank | 174.6 | 175.7 | 164.1 | 168.4 | 171.5 | 178.8 | 183.1 | 186.2 |
| REC Ltd. | 125.6 | 126.2 | 121.3 | 123.1 | 124.4 | 127.4 | 129.2 | 130.5 |
| Reliance Industries Ltd. | 1901.2 | 1903.5 | 1859.5 | 1875.0 | 1888.1 | 1916.6 | 1932.1 | 1945.2 |
| S&P CNX NIFTY | 14296.4 | 14343.6 | 13840.4 | 14023.9 | 14160.1 | 14479.8 | 14663.3 | 14799.5 |
| SBI Life Insurance Company Ltd. | 899.0 | 908.5 | 850.1 | 872.7 | 885.8 | 921.6 | 944.2 | 957.3 |
| Shree Cement Ltd. | 29320.7 | 29675.8 | 27091.1 | 28071.0 | 28695.9 | 30300.7 | 31280.6 | 31905.5 |
| Shriram Transport Finance Co. Ltd. | 1345.1 | 1351.2 | 1253.0 | 1287.8 | 1316.4 | 1379.8 | 1414.6 | 1443.2 |
| Siemens Ltd. | 1795.9 | 1799.9 | 1714.2 | 1744.1 | 1770.0 | 1825.8 | 1855.7 | 1881.6 |
| SRF Ltd. | 6150.5 | 6164.3 | 5802.2 | 5927.5 | 6039.0 | 6275.8 | 6401.1 | 6512.6 |
| State Bank of India | 329.5 | 332.0 | 311.0 | 318.8 | 324.2 | 337.4 | 345.2 | 350.6 |
| Steel Authority of India Ltd. | 89.0 | 89.6 | 82.6 | 85.2 | 87.1 | 91.5 | 94.1 | 96.0 |
| Sun Pharmaceutical Industries Ltd. | 645.2 | 647.9 | 616.0 | 627.6 | 636.4 | 656.7 | 668.3 | 677.1 |
| Sun TV Network Ltd. | 466.7 | 465.2 | 444.3 | 450.8 | 458.7 | 473.2 | 479.7 | 487.6 |
| Tata Chemicals Ltd. | 724.6 | 730.8 | 682.4 | 700.6 | 712.6 | 742.8 | 761.0 | 773.0 |
| Tata Consultancy Services Ltd. | 3144.6 | 3165.4 | 3006.5 | 3066.4 | 3105.5 | 3204.5 | 3264.4 | 3303.5 |
| Tata Consumer Products Ltd. | 680.1 | 681.5 | 633.2 | 649.8 | 664.9 | 696.6 | 713.2 | 728.3 |
| Tata Motors Ltd. | 298.1 | 300.1 | 278.2 | 286.2 | 292.1 | 306.1 | 314.1 | 320.0 |
| Tata Power Co. Ltd. | 93.6 | 94.0 | 88.4 | 90.4 | 92.0 | 95.6 | 97.6 | 99.2 |
| Tata Steel Ltd. | 894.0 | 893.9 | 858.3 | 870.2 | 882.1 | 905.8 | 917.7 | 929.6 |
| Tech Mahindra Ltd. | 983.4 | 988.1 | 934.5 | 953.9 | 968.7 | 1002.8 | 1022.2 | 1037.0 |
| The Ramco Cements Ltd. | 966.7 | 978.6 | 891.5 | 924.5 | 945.6 | 999.7 | 1032.7 | 1053.8 |
| Titan Company Ltd. | 1522.9 | 1531.0 | 1451.9 | 1481.0 | 1501.9 | 1551.9 | 1581.0 | 1601.9 |
| Torrent Pharmaceuticals Ltd. | 2604.9 | 2606.0 | 2520.0 | 2549.0 | 2576.9 | 2633.9 | 2662.9 | 2690.8 |
| Torrent Power Ltd. | 377.8 | 382.3 | 352.7 | 364.1 | 370.9 | 389.2 | 400.6 | 407.4 |
| Trent Ltd. | 736.5 | 737.3 | 707.2 | 717.5 | 727.0 | 746.8 | 757.1 | 766.6 |
| TVS Motor Company Ltd. | 537.0 | 539.1 | 515.9 | 524.4 | 530.7 | 545.4 | 553.9 | 560.2 |
| UltraTech Cement Ltd. | 6200.9 | 6356.5 | 5515.8 | 5847.9 | 6024.4 | 6533.0 | 6865.1 | 7041.6 |
| United Breweries Ltd. | 1130.4 | 1125.3 | 1094.5 | 1103.1 | 1116.7 | 1138.9 | 1147.5 | 1161.1 |
| United Spirits Ltd. | 522.9 | 522.9 | 509.2 | 513.7 | 518.3 | 527.5 | 532.0 | 536.6 |
| UPL Ltd. | 591.8 | 596.8 | 553.2 | 569.4 | 580.6 | 608.0 | 624.2 | 635.4 |
| Vedanta Ltd | 226.1 | 226.9 | 212.5 | 217.5 | 221.8 | 231.2 | 236.2 | 240.5 |
| Vodafone Idea Ltd. | 8.5 | 8.5 | 7.9 | 8.1 | 8.3 | 8.6 | 8.8 | 9.0 |
| Voltas Ltd. | 941.5 | 950.3 | 887.0 | 911.1 | 926.3 | 965.5 | 989.6 | 1004.8 |
| Wipro Ltd. | 470.1 | 471.8 | 456.3 | 462.1 | 466.1 | 475.8 | 481.6 | 485.6 |
| Zee Entertainment Enterprises Ltd. | 197.4 | 197.4 | 182.9 | 187.6 | 192.5 | 202.0 | 206.7 | 211.6 |

**Disclaimer Appendix****Analyst s holding in the Stock : Nil****Analyst s Certification:**

We analysts and the authors of this report, hereby certify that all of the views expressed in this research report accurately reflect our personal views about any and all of the subject issuer s or securities. We also certify that no part of our compensation was, is, or will be directly or indirectly related to the specific recommendation s or view s in this report. Analysts aren't registered as research analysts by FINRA and might not be an associated person of the BP Equities Pvt. Ltd. Institutional Equities.

General Disclaimer

This report has been prepared by the research department of BP EQUITIES Pvt. Ltd, is for information purposes only. This report is not construed as an offer to sell or the solicitation of an offer to buy or sell any security in any jurisdiction where such an offer or solicitation would be illegal.

BP EQUITIES Pvt. Ltd have exercised due diligence in checking the correctness and authenticity of the information contained herein, so far as it relates to current and historical information, but do not guarantee its accuracy or completeness. The opinions expressed are our current opinions as of the date appearing in the material and may be subject to change from time to time. Prospective investors are cautioned that any forward looking statement are not predictions and are subject to change without prior notice.

Recipients of this material should rely on their own investigations and take their own professional advice. BP EQUITIES Pvt. Ltd or any of its affiliates or employees shall not be in any way responsible for any loss or damage that may arise to any person from any inadvertent error in the information contained in this report. BP EQUITIES Pvt. Ltd. or any of its affiliates or employees do not provide, at any time, any express or implied warranty of any kind, regarding any matter pertaining to this report, including without limitation the implied warranties of merchantability, fitness for a particular purpose, and non-infringement. The recipients of this report should rely on their own investigations.

BP EQUITIES Pvt. Ltd and/or its affiliates and/or employees may have interests/ positions, financial or otherwise in the securities mentioned in this report. Opinions expressed are our current opinions as of the date appearing on this material only. While we endeavor to update on a reasonable basis the information discussed in this material, there may be regulatory, compliance, or other reasons that prevent us from doing so.

This report is not directed to or intended for display, downloading, printing, reproducing or for distribution to or use by any person in any locality, state and country or other jurisdiction where such distribution, publication or use would be contrary to the law or regulation or would subject to BP EQUITIES Pvt. Ltd or any of its affiliates to any registration or licensing requirement within such jurisdiction.

Corporate Office:

4th floor,
Rustom Bldg,
29, Veer Nariman Road, Fort,
Mumbai-400001
Phone- +91 22 6159 6464
Fax-+91 22 6159 6160
Website- www.bpwealth.com

Registered Office:

24/26, 1st Floor, Cama Building,
Dalal street, Fort,
Mumbai-400001
BP Equities Pvt. Ltd.
CIN No: U67120MH1997PTC107392