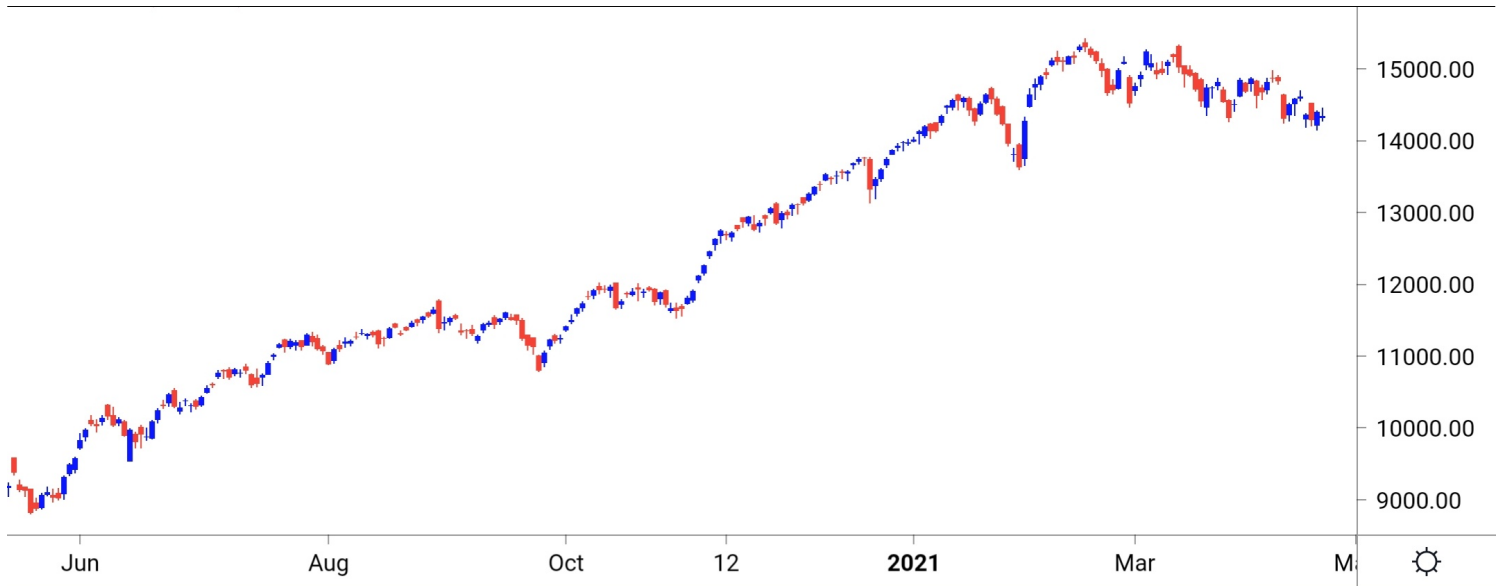


NIFTY SPOT : IMMEDIATE SUPPORT AT 14300-14230



Source: Falcon, BP Equities Research

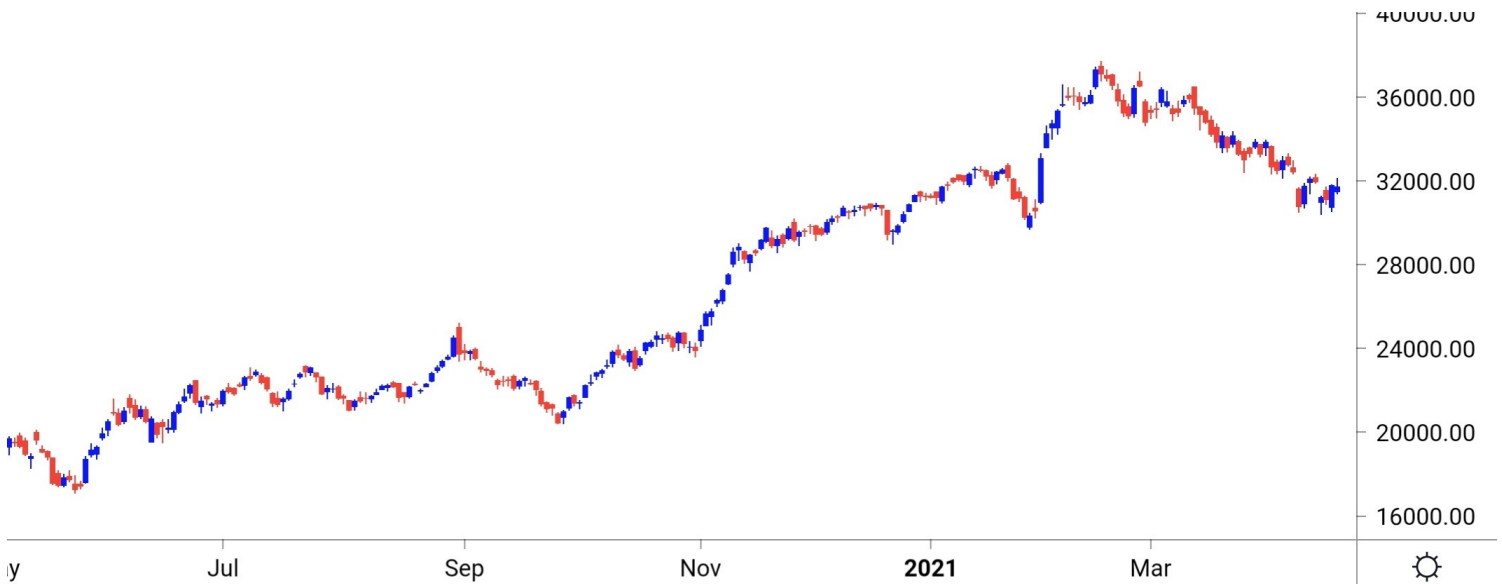
Nifty spot closed 0.45% lower at 14341. Index opened with gap down and remained strong for the first half of the session, while later lost its early gains and closed the session near the opening price. Going ahead index has an immediate support around 14300-14230-14150. While the resistance is placed at 14430-14500-14600.

Intraday Nifty

Resistance - 14430-14500-14600

Support - 14300-14230-14150

BANK NIFTY SPOT : IMMEDIATE SUPPORT AT 31500-31300



Source: Falcon, BP Equities Research

Bank Nifty spot closed 0.19% lower at 31722. Banknifty opened with wide gap down and remained strong for the first half of the session while in second session Banknifty erased its early gains to close session with minor loss. Going ahead Banknifty has an immediate resistance around 32000-32200-32500. On the downside support comes at 31500-31300-31000.

Intraday Bank Nifty

Resistance - 32000-32200-32500

Support - 31500-31300-31000

Technical Trend

INTRADAY TRADER'S PICKS

Sr.No.	STOCK	CLOSE	Target 1	Target 2	Stop Loss	RECOMMENDATION
1	HDFC	2497	2530	2555	2480	BUY ABOVE 2505
2	RELIANCE	1904	1930	1950	1890	BUY ABOVE 1910
3	KOTAKBANK	1734	1760	1780	1720	BUY ABOVE 1740
4	INFY	1334	1315	1300	1345	SELL BELOW 1330
5	LT	1322	1300	1285	1330	SELL BELOW 1315

DERIVATIVES

INDICES SNAPSHOT

SCRIPS	CP AS ON 22/4/2021	CP AS ON 23/4/2021	Change (%)	OI AS ON 22/4/2021	OI AS ON 23/4/2021	Change (%)
BANKNIFTY	31762.85	31709.6	-0.17	1966825	1934925	-1.62
FINNIFTY	15232.55	15237.8	0.03	17800	16000	-10.11
NIFTY	14403.6	14338.6	-0.45	12298425	12421500	1.00

Derivative Highlights

- ⇒ Nifty Future closed with a Discount of 8 points v/s a Discount of 1 points in the previous session.
- ⇒ Nifty Future Open Interest Increased by 1.00%. Bank Nifty Future Open Interest Decreased by 1.62%.
- ⇒ Nifty PCR - OI Decreased from 1.16 to 1.08, Nifty Bank PCR - OI Decreased from 1.04 to 1.03.
- ⇒ FII Sold Rs 1360.76 crore while DII Bought Rs 1695.59 crore in the Cash Segment. FII Sold Rs 232.76 crore in Index Futures, Bought Rs 310.01 crore in index options, while in Future they Bought Rs 1296.59 crore and Bought Rs 150.18 in stock options.
- ⇒ Among Index Option space, Highest Open Interest concentration was seen in 14000 & 13000 Strike price among the PE options. Where as among CE Options Highest Open Interest Concentration was seen in 15000 & 14800 Strike price.
- ⇒ Highest Open Interest Build Up among the PE options was seen in 13000 & 14000 Strike price. Among CE options highest build up was seen in 15000 & 14800 Strike price.

OI Concentration

PUT OPTION		CALL OPTION	
Strike Price	Open Interest	Strike Price	Open Interest
14000	5527500	15000	5298375
13000	3319200	14800	3315075
13500	3165450	14500	2966925
14200	2778450	14600	2609850
14300	2746650	15500	2548350

Highest Change in OI

PUT OPTION		CALL OPTION	
Strike Price	Change in OI	Strike Price	Change in OI
13000	751575	15000	1154700
14000	674700	14800	838800
14100	443775	14600	736200
14300	435300	14700	577575
13400	428025	14900	494850

MWPL

SCRIPS	OI %	BAN
IBULHSGFIN	89%	YES
SUNTV	89%	YES
CANBK	87%	NO
NATIONALUM	80%	NO
SAIL	80%	NO
PNB	79%	NO
BHEL	79%	NO
ADANI PORTS	79%	NO
CADILAHC	77%	NO
TATAPOWER	71%	NO

Technical Trend

Stock Analysis

Long Build-up	Long Unwinding	Short Build-up	Short Covering
AARTIIND	APOLLOTYRE	ASHOKLEY	AXISBANK
ASIANPAINT	BIOCON	AUBANK	BEL
BALKRISIND	EXIDEIND	BHARTIARTL	BPCL
COALINDIA	BIOCON	BRITANNIA	CUB
DIVISLAB	HCLTECH	GAIL	HAVELLS
HDFCLIFE	RELIANCE	ICICIBANK	IRCTC

STATISTICS

Highest Premium

SCRIPS	Premium %	Price change %
GODREJCP	0.37	-0.77
HDFCLIFE	0.35	1.08
TVSMOTOR	0.34	-0.20
L&TFH	0.33	-0.61
SHREECEM	0.33	-1.46

Highest Discount

SCRIPS	Premium %	Price change %
PVR	-2.35	5.01
AARTIIND	-0.77	3.15
HCLTECH	-0.49	-0.65
GMRINFRA	-0.44	-0.43
NESTLEIND	-0.40	-0.98

TOP 5 VOLUME GAINER FOR THE SESSION

SCRIPS	CP AS ON 22/4/2021	CP AS ON 23/4/2021	Change (%)	VOL AS ON 22/4/2021	VOL AS ON 23/4/2021	Change (%)
TRENT	748.4	771.15	3.04	420	1761	319.29
ICICIPRULI	493.15	512.15	3.85	2125	6748	217.55
DEEPAKNTR	1602.1	1630.35	1.76	685	2165	216.06
AARTIIND	1420.3	1451.6	2.20	485	1401	188.87
POWERGRID	203.95	211.1	3.51	1501	4305	186.81

TOP 5 VOLUME LOSER FOR THE SESSION

SCRIPS	CP AS ON 22/4/2021	CP AS ON 23/4/2021	Change (%)	VOL AS ON 22/4/2021	VOL AS ON 23/4/2021	Change (%)
IBULHSGFIN	176.6	176.75	0.08	12072	664	-94.50
ADANIPTS	738.9	726	-1.75	27751	6465	-76.70
NESTLEIND	16728.2	16559.05	-1.01	3382	1101	-67.45
WIPRO	486.4	476.4	-2.06	15743	5387	-65.78
SIEMENS	1800.2	1801.65	0.08	1040	371	-64.33

Technical Trend

TOP 10 OPEN INTEREST GAINER FOR THE SESSION

SCRIPS	CP AS ON 22/4/2021	CP AS ON 23/4/2021	Change (%)	OI AS ON 22/4/2021	OI AS ON 23/4/2021	Change (%)
CADILAHC	552.4	572.3	3.60	14696000	17584600	19.66
AMARAJABAT	798.45	802.9	0.56	4363000	4969000	13.89
BRITANNIA	3749	3647.15	-2.72	1894000	2120800	11.97
TVSMOTOR	535.2	534.6	-0.11	3871000	4303600	11.18
AARTIIND	1420.3	1451.6	2.20	499375	546975	9.53
L&TFH	90.7	90.2	-0.55	29252872	31805136	8.72
M&M	800.3	779.85	-2.56	8660400	9368800	8.18
PVR	1070.65	1118.4	4.46	2665443	2866908	7.56
HDFCLIFE	680.6	688.75	1.20	9979200	10725000	7.47
ONGC	103.2	102.5	-0.68	36575000	39223800	7.24

TOP 10 OPEN INTEREST LOSER FOR THE SESSION

SCRIPS	CP AS ON 22/4/2021	CP AS ON 23/4/2021	Change (%)	OI AS ON 22/4/2021	OI AS ON 23/4/2021	Change (%)
BPCL	419.3	422.65	0.80	48835800	44125200	-9.65
CUB	159.5	165.35	3.67	7188900	6587500	-8.37
TORNTPOWER	384.85	393.65	2.29	2145000	1968000	-8.25
IBULHSGFIN	176.6	176.75	0.08	32816600	30637300	-6.64
M&MFIN	175.45	179.2	2.14	18948000	17732000	-6.42
BATAINDIA	1296.95	1305.9	0.69	1892000	1775400	-6.16
UBL	1123.95	1139	1.34	1474200	1394400	-5.41
WIPRO	486.4	476.4	-2.06	42096000	39993600	-4.99
IRCTC	1671.8	1709.45	2.25	1500525	1427400	-4.87
SAIL	93.95	93.25	-0.75	124583000	119320000	-4.22

Technical Trend

Pivot Report– Nifty F&O

Symbol	Last Rate	Pivot	Support3	Support2	Support 1	Resist1	Resist2	Resist3
Aarti Industries Ltd.	1462.8	1453.1	1376.1	1398.5	1430.7	1485.2	1507.6	1539.8
ACC Ltd.	1812.9	1823.3	1738.7	1770.4	1791.6	1844.5	1876.2	1897.4
Adani Enterprises Ltd.	1157.6	1162.1	1104.0	1124.8	1141.2	1178.5	1199.3	1215.7
Adani Ports & Special Economic Zone Ltd.	725.4	730.8	687.9	704.0	714.7	741.5	757.6	768.3
Alembic Pharmaceuticals Ltd.	998.1	1001.4	954.6	971.3	984.7	1014.8	1031.5	1044.9
Alkem Laboratories Ltd.	2778.5	2787.6	2656.7	2703.4	2740.9	2825.1	2871.8	2909.3
Amara Raja Batteries Ltd.	800.6	801.5	783.0	789.5	795.0	807.0	813.5	819.0
Ambuja Cements Ltd.	295.2	295.4	285.4	288.8	292.0	298.6	302.0	305.2
Apollo Hospitals Enterprises Ltd.	3200.1	3223.4	3019.7	3095.4	3147.7	3275.7	3351.4	3403.7
Apollo Tyres Ltd.	201.8	202.8	192.1	196.0	198.9	205.7	209.6	212.5
Ashok Leyland Ltd.	111.3	111.5	107.3	108.8	110.0	112.7	114.2	115.4
Asian Paints Ltd.	2518.0	2526.4	2419.0	2457.6	2487.8	2556.6	2595.2	2625.4
Au Small Finance Bank Ltd.	1075.5	1085.8	967.8	1010.6	1043.0	1118.2	1161.0	1193.4
Aurobindo Pharma Ltd.	993.4	994.1	950.5	965.3	979.3	1008.1	1022.9	1036.9
Axis Bank Ltd.	671.4	666.6	629.1	640.0	655.7	682.3	693.2	708.9
Bajaj Auto Ltd.	3672.5	3674.0	3568.9	3604.4	3638.5	3708.1	3743.6	3777.7
Bajaj Finance	4667.8	4679.4	4449.6	4530.1	4598.9	4748.2	4828.7	4897.5
Bajaj Finserv Ltd.	9916.7	9933.0	9321.2	9530.6	9723.6	10126.0	10335.4	10528.4
Balkrishna Industries Ltd.	1694.9	1686.8	1631.5	1647.3	1671.1	1710.6	1726.4	1750.2
Bandhan Bank Ltd.	313.5	312.1	293.9	299.5	306.5	319.1	324.7	331.7
BANK NIFTY	31722.3	31749.3	30579.0	30978.1	31350.2	32121.4	32520.5	32892.6
Bank of Baroda	63.0	63.5	59.5	61.0	62.0	64.4	65.9	66.9
Bata India Ltd.	1303.1	1306.6	1251.8	1271.2	1287.1	1322.5	1341.9	1357.8
Berger Paints India Ltd.	709.7	712.2	688.7	697.4	703.5	718.4	727.1	733.2
Bharat Electronics Ltd.	126.9	127.1	121.5	123.4	125.2	128.8	130.7	132.5
Bharat Forge Ltd.	582.4	585.9	554.1	565.9	574.1	594.2	606.0	614.2
Bharat Heavy Electricals Ltd.	45.4	45.4	42.8	43.6	44.5	46.3	47.1	48.0
Bharat Petroleum Corporation Ltd.	423.1	421.3	408.8	412.4	417.7	426.7	430.3	435.6
Bharti Airtel Ltd.	522.6	524.7	503.6	511.4	517.0	530.3	538.1	543.7
Biocon Ltd.	397.6	399.0	387.3	391.6	394.6	402.0	406.3	409.3
Bosch Ltd.	13538.7	13511.3	13160.3	13268.2	13403.4	13646.5	13754.4	13889.6
Britannia Industries Ltd.	3650.3	3683.9	3486.5	3563.5	3606.9	3727.3	3804.3	3847.7
Cadila Healthcare Ltd.	570.9	562.8	510.8	525.4	548.2	585.5	600.1	622.9
Canara Bank	130.5	131.2	121.2	124.8	127.6	134.1	137.7	140.5
Cholamandalam Investment and Finance Company	556.0	555.9	523.3	534.2	545.1	566.8	577.7	588.6
Cipla Ltd.	935.6	937.1	891.2	907.0	921.3	951.4	967.2	981.5
City Union Bank Ltd.	165.6	164.3	150.2	154.5	160.0	169.8	174.1	179.6
Coal India Ltd	126.2	125.9	121.5	122.9	124.5	127.5	128.9	130.5
Coforge Ltd.	2851.0	2891.4	2666.2	2754.8	2802.9	2939.5	3028.1	3076.2
Colgate Palmolive (India) Ltd.	1514.1	1516.7	1482.4	1494.7	1504.4	1526.4	1538.7	1548.4
Container Corporation of India Ltd.	549.5	552.3	523.8	534.3	541.9	559.9	570.4	578.0
Cummins India Ltd.	850.5	854.6	815.6	830.0	840.2	864.8	879.2	889.4
Dabur India Ltd.	560.0	561.0	544.2	550.2	555.1	565.9	571.9	576.8
Deepak Nitrite	1627.9	1636.4	1532.4	1569.9	1598.9	1665.4	1702.9	1731.9
Divi's Laboratories Ltd.	3779.8	3782.8	3645.3	3692.2	3736.0	3826.6	3873.5	3917.3
DLF Ltd.	242.0	243.1	228.5	233.8	237.9	247.2	252.5	256.6
Dr. Lal Pathlabs Ltd.	2884.8	2872.7	2693.8	2749.4	2817.1	2940.4	2996.0	3063.7
Dr. Reddy's Laboratories Ltd.	5066.7	5121.0	4739.8	4884.9	4975.8	5211.9	5357.0	5447.9
Eicher Motors Ltd.	2317.3	2326.2	2242.2	2273.1	2295.2	2348.3	2379.2	2401.3
Escorts Ltd.	1138.4	1149.8	1070.7	1100.9	1119.6	1168.5	1198.7	1217.4
Exide Industries Ltd.	171.1	171.8	166.7	168.6	169.9	173.0	174.9	176.2

Technical Trend

Symbol	Last Rate	Pivot	Support3	Support2	Support 1	Resist1	Resist2	Resist3
Federal Bank Ltd.	72.1	72.2	68.8	70.0	71.0	73.2	74.4	75.4
GAIL (India) Ltd.	129.4	130.6	121.8	125.1	127.3	132.8	136.1	138.3
Glenmark Pharmaceuticals Ltd.	559.3	562.2	519.6	534.8	547.0	574.5	589.7	601.9
GMR Infrastructure Ltd.	22.9	22.9	22.5	22.6	22.8	23.1	23.2	23.4
Godrej Consumer Products Ltd.	698.7	699.0	678.8	685.6	692.2	705.6	712.4	719.0
Godrej Properties Ltd.	1313.0	1316.0	1262.1	1281.1	1297.0	1332.0	1351.0	1366.9
Granules India	329.7	331.9	310.6	318.4	324.0	337.5	345.3	350.9
Grasim Industries Ltd.	1278.1	1287.8	1191.2	1226.6	1252.4	1313.5	1348.9	1374.7
Gujarat Gas Co. Ltd.	545.5	541.6	518.7	525.0	535.3	551.9	558.2	568.5
Havell's India Ltd.	1005.5	1009.9	972.2	986.2	995.9	1019.6	1033.6	1043.3
HCL Technologies Ltd.	955.7	960.2	921.0	935.6	945.6	970.3	984.9	994.9
HDFC Asset Management Company Ltd.	2822.4	2814.8	2716.6	2746.8	2784.6	2852.6	2882.8	2920.6
HDFC Bank Ltd.	1414.2	1416.3	1363.6	1381.9	1398.0	1432.4	1450.7	1466.8
HDFC Life Insurance Company Ltd.	686.4	684.7	663.0	669.7	678.0	693.1	699.8	708.1
Hero MotoCorp Ltd.	2864.1	2850.0	2764.4	2788.2	2826.1	2887.9	2911.7	2949.6
Hindalco Industries Ltd.	349.5	352.5	325.0	335.1	342.3	359.7	369.8	377.0
Hindustan Petroleum Corporation Ltd.	233.7	233.6	227.7	229.6	231.7	235.6	237.5	239.6
Hindustan Unilever Ltd.	2307.8	2319.3	2238.5	2269.3	2288.5	2338.5	2369.3	2388.5
Housing Development Finance Corporation Ltd.	2497.4	2479.7	2388.5	2413.0	2455.2	2521.8	2546.3	2588.5
I T C Ltd.	205.4	205.5	201.3	202.8	204.1	206.8	208.3	209.6
ICICI Bank Ltd.	570.0	572.5	551.1	559.1	564.5	578.0	586.0	591.4
ICICI Lombard General Insurance Company Ltd.	1381.2	1387.0	1339.3	1357.1	1369.2	1399.1	1416.9	1429.0
ICICI Prudential Life Insurance Company	512.4	509.2	456.0	472.6	492.5	529.1	545.7	565.6
IDFC First Bank Ltd.	51.1	51.5	47.9	49.2	50.2	52.4	53.7	54.7
Indiabulls Housing Finance	177.1	176.5	168.3	170.8	174.0	179.6	182.1	185.3
Indian Oil Corporation Ltd.	88.1	88.0	86.3	86.9	87.5	88.6	89.2	89.8
Indian Railway Catering & Tourism Corp Ltd.	1712.0	1697.0	1619.1	1640.1	1676.0	1732.9	1753.9	1789.8
Indraprastha Gas Ltd.	509.9	511.0	492.4	498.9	504.4	516.5	523.0	528.5
Indus Towers Ltd.	252.3	257.5	228.4	239.9	246.1	263.7	275.2	281.4
IndusInd Bank Ltd.	850.0	844.3	791.4	807.1	828.6	865.7	881.4	902.9
Info Edge (India) Ltd.	4876.3	4865.0	4602.5	4686.2	4781.3	4960.1	5043.8	5138.9
Infosys Ltd.	1333.8	1337.7	1309.7	1320.3	1327.1	1344.5	1355.1	1361.9
Interglobe Aviation	1541.9	1532.1	1470.9	1488.1	1515.0	1559.0	1576.2	1603.1
Jindal Steel & Power Ltd.	437.1	439.3	410.8	421.0	429.0	447.3	457.5	465.5
JSW Steel Ltd.	635.4	638.0	596.3	611.1	623.2	650.2	665.0	677.1
Jubliant Foodworks Limited	2844.7	2865.9	2701.2	2763.2	2803.9	2906.7	2968.7	3009.4
Kotak Mahindra Bank Ltd.	1734.2	1736.9	1681.4	1700.8	1717.5	1753.6	1773.0	1789.7
L&T Finance Holdings Ltd.	89.9	90.2	86.5	87.8	88.9	91.2	92.5	93.6
L&T Technology Services	2642.7	2617.3	2445.6	2494.3	2568.5	2691.5	2740.2	2814.4
Larsen & Toubro Infotech	3901.1	3913.7	3697.4	3773.7	3837.4	3977.4	4053.7	4117.4
Larsen & Toubro Ltd.	1322.9	1327.3	1279.8	1297.1	1310.0	1340.2	1357.5	1370.4
LIC Housing Finance Ltd.	391.6	390.7	375.2	380.0	385.8	396.5	401.3	407.1
Lupin Ltd.	1076.3	1065.5	1000.4	1018.5	1047.4	1094.4	1112.5	1141.4
Mahanagar Gas Ltd	1108.9	1100.5	1055.6	1067.8	1088.3	1121.0	1133.2	1153.7
Mahindra & Mahindra Financial Services Ltd.	178.9	177.1	164.0	167.8	173.3	182.7	186.5	192.0
Mahindra & Mahindra Ltd.	777.9	785.9	734.6	754.4	766.1	797.6	817.4	829.1
Manappuram Finance Limited	146.8	145.4	137.9	140.0	143.4	148.8	150.9	154.3
Marico Ltd.	411.6	411.9	403.1	406.1	408.9	414.7	417.7	420.5
Maruti Suzuki India Ltd.	6676.1	6650.3	6431.1	6495.6	6585.8	6740.5	6805.0	6895.2
Max Financial Services Ltd.	863.6	861.8	841.2	847.4	855.5	869.9	876.1	884.2

Technical Trend

Symbol	Last Rate	Pivot	Support3	Support2	Support 1	Resist1	Resist2	Resist3
Motherson Sumi Systems Ltd.	213.6	213.8	199.8	204.5	209.1	218.3	223.0	227.6
MphasiS Ltd.	1696.5	1684.9	1582.9	1613.0	1654.8	1726.6	1756.7	1798.5
MRF Ltd.	78214.1	78298.4	76634.7	77217.4	77715.7	78796.7	79379.4	79877.7
Muthoot Finance	1200.9	1184.6	1101.2	1123.6	1162.2	1223.2	1245.6	1284.2
National Aluminium Co. Ltd.	56.8	57.0	53.5	54.8	55.8	58.0	59.3	60.3
Navin Fluorine International Ltd.	3172.2	3184.1	2995.1	3062.1	3117.1	3239.1	3306.1	3361.1
Nestle India Ltd.	16625.7	16676.7	16359.7	16482.4	16554.0	16748.3	16871.0	16942.6
Nippon Life India Asset Management Ltd.	325.7	326.7	318.3	321.4	323.6	328.8	331.9	334.1
NMDC Ltd.	138.7	139.8	131.0	134.3	136.5	141.9	145.2	147.4
NTPC Ltd.	102.6	101.2	94.4	96.2	99.4	104.4	106.2	109.4
Oil & Natural Gas Corporation Ltd.	102.4	102.6	99.4	100.5	101.5	103.5	104.6	105.6
Page Industries	29127.4	29341.1	28040.3	28545.1	28836.3	29632.3	30137.1	30428.3
Petronet LNG Ltd.	235.2	232.7	220.8	223.9	229.6	238.3	241.4	247.1
Pfizer Ltd.	5175.7	5225.2	4840.5	4985.2	5080.5	5320.5	5465.2	5560.5
PI Industries Limited	2522.6	2542.6	2383.9	2443.5	2483.0	2582.1	2641.7	2681.2
Pidilite Industries Ltd.	1783.9	1782.8	1734.8	1750.4	1767.2	1799.6	1815.2	1832.0
Piramal Enterprises	1647.3	1650.6	1597.2	1616.1	1631.7	1666.1	1685.0	1700.6
Power Finance Corporation Ltd.	106.8	107.0	102.6	104.1	105.5	108.4	109.9	111.3
Power Grid Corporation of India Ltd.	211.2	209.4	196.9	200.5	205.8	214.7	218.3	223.6
Punjab National Bank	34.0	34.0	32.1	32.7	33.4	34.7	35.3	36.0
PVR Limited	1145.3	1123.7	981.6	1021.8	1083.5	1185.4	1225.6	1287.3
RBL Bank	178.2	178.2	165.1	169.4	173.8	182.6	186.9	191.3
REC Ltd.	126.4	126.2	123.0	124.0	125.2	127.4	128.4	129.6
Reliance Industries Ltd.	1904.4	1906.2	1870.0	1882.7	1893.5	1917.1	1929.8	1940.6
S&P CNX NIFTY	14341.3	14358.6	14068.1	14170.7	14256.0	14443.9	14546.5	14631.8
SBI Life Insurance Company Ltd.	922.9	920.4	853.3	874.8	898.8	944.4	965.9	989.9
Shree Cement Ltd.	28106.3	28235.2	27049.8	27487.9	27797.1	28544.4	28982.5	29291.7
Shriram Transport Finance Co. Ltd.	1380.7	1360.0	1255.8	1283.7	1332.2	1408.5	1436.4	1484.9
Siemens Ltd.	1800.0	1801.7	1748.5	1766.8	1783.4	1818.3	1836.6	1853.2
SRF Ltd.	6170.9	6160.6	5999.5	6049.7	6110.3	6221.2	6271.4	6332.0
State Bank of India	336.5	336.0	323.9	327.8	332.1	340.4	344.3	348.6
Steel Authority of India Ltd.	93.1	93.5	84.4	87.6	90.3	96.3	99.5	102.2
Sun Pharmaceutical Industries Ltd.	638.0	638.0	614.5	622.3	630.1	645.8	653.6	661.4
Sun TV Network Ltd.	455.2	457.2	443.5	448.7	452.0	460.4	465.6	468.9
Tata Chemicals Ltd.	726.2	729.8	694.1	707.2	716.7	739.3	752.4	761.9
Tata Consultancy Services Ltd.	3109.5	3106.5	3066.1	3078.6	3094.0	3122.0	3134.5	3149.9
Tata Consumer Products Ltd.	664.6	667.1	643.8	652.4	658.5	673.2	681.8	687.9
Tata Motors Ltd.	294.0	294.8	280.2	285.3	289.7	299.2	304.3	308.7
Tata Power Co. Ltd.	95.7	95.4	90.5	92.0	93.8	97.2	98.7	100.5
Tata Steel Ltd.	925.6	927.1	875.0	892.9	909.2	943.5	961.4	977.7
Tech Mahindra Ltd.	950.2	955.5	914.5	930.0	940.1	965.6	981.1	991.2
The Ramco Cements Ltd.	958.7	983.6	839.1	895.6	927.1	1015.1	1071.6	1103.1
Titan Company Ltd.	1461.5	1470.0	1397.8	1424.7	1443.1	1488.4	1515.3	1533.7
Torrent Pharmaceuticals Ltd.	2532.0	2546.9	2405.4	2457.5	2494.7	2584.1	2636.2	2673.4
Torrent Power Ltd.	394.0	391.3	374.9	379.5	386.7	398.6	403.2	410.4
Trent Ltd.	770.3	766.8	699.6	720.8	745.6	791.5	812.7	837.5
TVS Motor Company Ltd.	532.8	532.9	517.9	522.9	527.9	537.9	542.9	547.9
UltraTech Cement Ltd.	6067.9	6072.9	5831.6	5913.7	5990.8	6150.0	6232.1	6309.2
United Breweries Ltd.	1140.9	1133.4	1085.4	1098.9	1119.9	1154.4	1167.9	1188.9
United Spirits Ltd.	522.2	521.5	509.1	513.0	517.6	526.1	530.0	534.6
UPL Ltd.	585.4	587.9	563.0	572.2	578.8	594.5	603.7	610.3
Vedanta Ltd	228.0	229.4	217.2	221.7	224.9	232.6	237.1	240.3
Vodafone Idea Ltd.	8.5	8.5	8.2	8.3	8.4	8.6	8.7	8.8
Voltas Ltd.	938.9	943.2	907.1	920.6	929.7	952.4	965.9	975.0
Wipro Ltd.	475.7	479.1	457.9	466.1	470.9	483.9	492.1	496.9
Zee Entertainment Enterprises Ltd	188.0	189.3	179.7	183.3	185.7	191.7	195.3	197.7

**Disclaimer Appendix****Analyst s holding in the Stock : Nil****Analyst s Certification:**

We analysts and the authors of this report, hereby certify that all of the views expressed in this research report accurately reflect our personal views about any and all of the subject issuer s or securities. We also certify that no part of our compensation was, is, or will be directly or indirectly related to the specific recommendation s or view s in this report. Analysts aren't registered as research analysts by FINRA and might not be an associated person of the BP Equities Pvt. Ltd. Institutional Equities.

General Disclaimer

This report has been prepared by the research department of BP EQUITIES Pvt. Ltd, is for information purposes only. This report is not construed as an offer to sell or the solicitation of an offer to buy or sell any security in any jurisdiction where such an offer or solicitation would be illegal.

BP EQUITIES Pvt. Ltd have exercised due diligence in checking the correctness and authenticity of the information contained herein, so far as it relates to current and historical information, but do not guarantee its accuracy or completeness. The opinions expressed are our current opinions as of the date appearing in the material and may be subject to change from time to time. Prospective investors are cautioned that any forward looking statement are not predictions and are subject to change without prior notice.

Recipients of this material should rely on their own investigations and take their own professional advice. BP EQUITIES Pvt. Ltd or any of its affiliates or employees shall not be in any way responsible for any loss or damage that may arise to any person from any inadvertent error in the information contained in this report. BP EQUITIES Pvt. Ltd. or any of its affiliates or employees do not provide, at any time, any express or implied warranty of any kind, regarding any matter pertaining to this report, including without limitation the implied warranties of merchantability, fitness for a particular purpose, and non-infringement. The recipients of this report should rely on their own investigations.

BP EQUITIES Pvt. Ltd and/or its affiliates and/or employees may have interests/ positions, financial or otherwise in the securities mentioned in this report. Opinions expressed are our current opinions as of the date appearing on this material only. While we endeavor to update on a reasonable basis the information discussed in this material, there may be regulatory, compliance, or other reasons that prevent us from doing so.

This report is not directed to or intended for display, downloading, printing, reproducing or for distribution to or use by any person in any locality, state and country or other jurisdiction where such distribution, publication or use would be contrary to the law or regulation or would subject to BP EQUITIES Pvt. Ltd or any of its affiliates to any registration or licensing requirement within such jurisdiction.

Corporate Office:

4th floor,
Rustom Bldg,
29, Veer Nariman Road, Fort,
Mumbai-400001
Phone- +91 22 6159 6464
Fax-+91 22 6159 6160
Website- www.bpwealth.com

Registered Office:

24/26, 1st Floor, Cama Building,
Dalal street, Fort,
Mumbai-400001
BP Equities Pvt. Ltd.
CIN No: U67120MH1997PTC107392