





NIFTY SPOT : IMMEDIATE RESISTANCE AT 14470

NIFTY[N59901] 14306.60, 14526.95, 14151.40, 14341.35, **9882.393000**, -1.89%
 Price Avg (E, 21)



Technical View

Index started the week with a negative note and remained sideways negative during the week. Index resumed its streak of making lower high and lower low on weekly basis which is a bearish signal. Index is placed around lower trend line of the down sloping channel; also the recent trough coincides with 21 EMA, for index to continue its decline it needs to sustain below this level and a failure to violate this can call for some relief in the ongoing down move. RSI after forming negative divergence is forming lower highs and lower lows which show lack of strength and is bearish signal for short term. Going ahead index has immediate resistance at 14470, a sustenance above this level will call for relief towards 14630-14730 while support comes at 14150-13910.

Key Data

% Change (D)	(0.45)
% Change (W)	(1.89)
21 SMA (D)	14600
21 SMA (W)	14408
100 SMA (D)	14374
100 SMA (W)	11862
MACD (D)	(108.29)
MACD (W)	594.23
RSI (D)	42.83
RSI (W)	55.68

NIFTY : 14341

SUP :14220-14150-13910

RES : 14470-14630-14730

HANSRAJ MODI,CMT,HEAD TECHNICAL & DERIVATIVE
 hansrajmodi@bpwealth.com

AAKASH CHAUHAN, DERIVATIVE ANALYST
 aakash@bpwealth.com

ROHAN SHAH, TECHNICAL ANALYST
 rohanshah@bpwealth.com

RICHES VANARA, RESEARCH ASSOCIATE
 riches@bpwealth.com



BANKNIFTY : IMMEDIATE RESISTANCE AT 32120

BANKNIFTY[N59906] 30993.45, 32148.40, 30405.65, 31722.30, 9882393000, -0.80%
 Price Avg (E, 21)



Source: IRIS, BP Equities Research

Technical View

Index opened the week with a gap down and remained sideways corrective throughout the week. Index continued its streak of making lower highs and lower lows on weekly basis. Index has closed below its immediate support of 13EMA and also closed below up sloping trend line which is bearish signal for medium term trend. RSI continued to make lower highs and lower lows which shows lack of strength and is bearish signal for short term. Going ahead index has immediate resistance at 32120; sustenance above this level will call for relief towards 32840-33660 while support comes at 31300-30700.

Key Data

% Change (D)	(0.19)
% Change (W)	(0.80)
21 SMA (D)	32587
21 SMA (W)	32842
100 SMA (D)	32834
100 EMA (W)	27689
MACD (D)	(764.29)
MACD (W)	1526.32
RSI (D)	41.66
RSI (W)	51.83

BANKNIFTY : 32722

SUP : 31300-30700-30000

RES : 32120-32840-33660



MOMENTUM PICKS

TRENT

BUY

TRENT[N1964] 720.00, 787.95, 692.20, 770.30, 5120700, 3.58%
Price Avg (E, 50)



Source: IRIS, BP Equities Research

Technical View

The stock has reversed after taking support at the lower trend line of the up sloping channel in which its trading. At the recent trough stock has formed Bullish reversal candlestick which suggests the recent trough to act as strong support and short term trend to turn bullish. Recent trough is placed around 50 EMA, in the past also this average has acted as strong support on intermediate declines, also recent trough is formed near 61.8% retracement of its entire up move from 585 to 945 which increases the reliability of the recent trough to act as strong support. RSI has reversed from its oversold zone and has surpassed its average which is bullish signal and compliments the bullish view of price. Volume has declined during recent corrective move and now has started increasing with price advance which is supportive of price..

We recommend to BUY TRENT @CMP for the target of 975 while stop loss comes at 715 in 1 month.

Execution Data

Target (Rs)	975
Stop loss (Rs)	715
Buying Range (Rs)	CMP
Last Close Price (Rs)	770
% change weekly	3.58

Key Data

21 SMA (D)	754
21 SMA (W)	737
MACD (W)	34.18
RSI (W)	56.34
MARKET CAP	274(B)



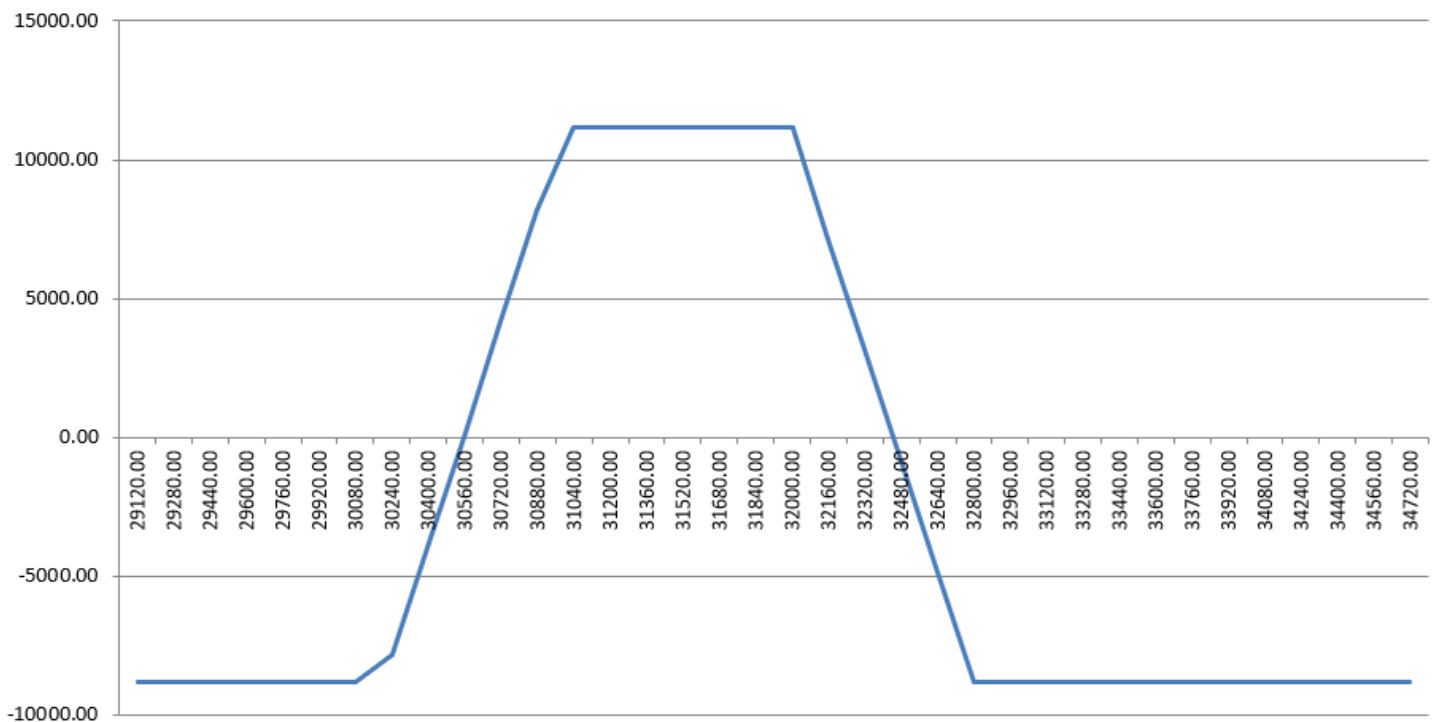
BANKNIFTY OPTION STRATEGY

Banknifty closed 0.80% lower this week @ 31772. We have seen call unwinding in ITM 30500, 31000, 31500 call options as call writers are active in these strike prices and we have seen major put addition in 31000, 31500, 32000 put options as put writers are writing put options. Highest Put option volume is visible in 31000 PE which will act as a good support and highest volume on call side is visible in 32000 CE. Highest OI concentration is visible in 31000 PE which will act as a support and 33000 CE which will act as a resistance. Banknifty max pain is at 32000.

OPTION STRATEGY: -

STRATEGY : SELL 32000 CE @ 405, BUY 32800 CE @ 138 AND SELL 31000 PE @ 380, BUY 30200 PE @ 200 (29APRIL21 EXPIRY)
 MAX PROFIT : Rs.11175
 MAX LOSS : Rs.8825
 LOT SIZE : 25 Shares
 BREAK EVEN POINT : 30553 - 32447
 MARGIN REQUIRED : Rs.80000 APPROX

OPTION PAYOFF: -



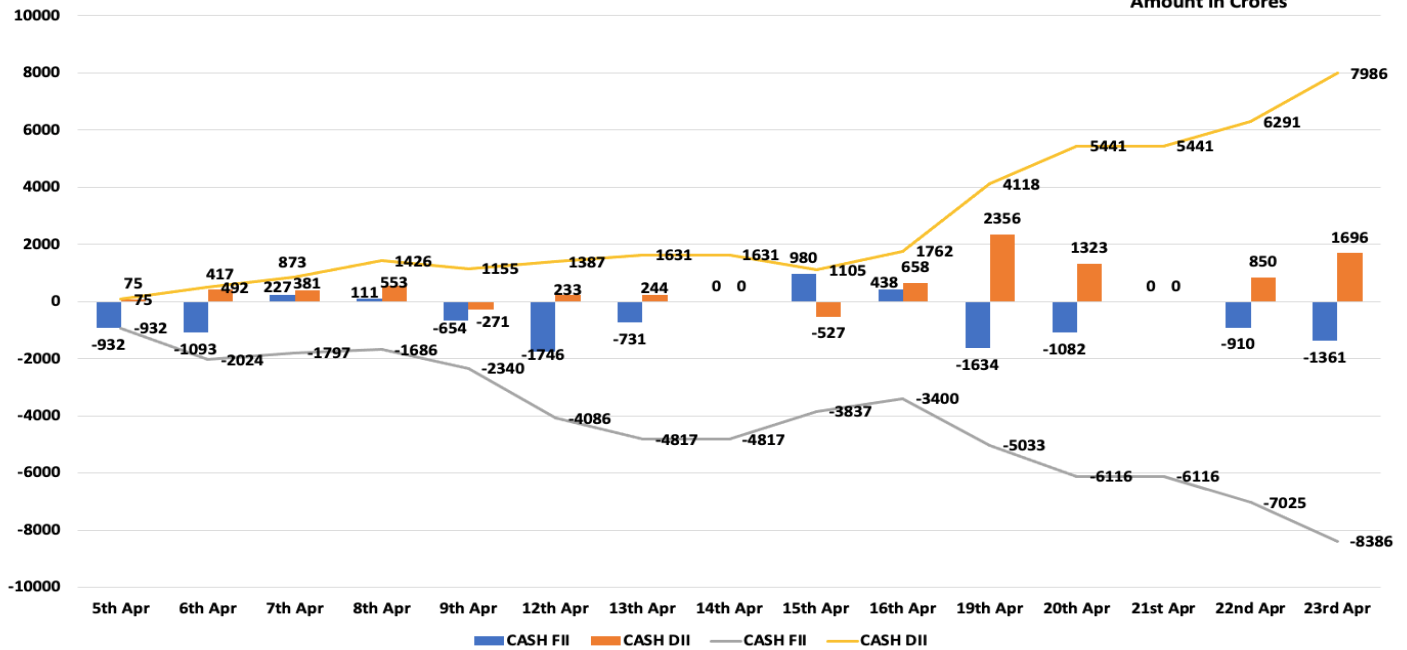


FII DII DATA

FII DII CASH DATA

FII/DII CASH STATS DAILY AND CUMULATIVE

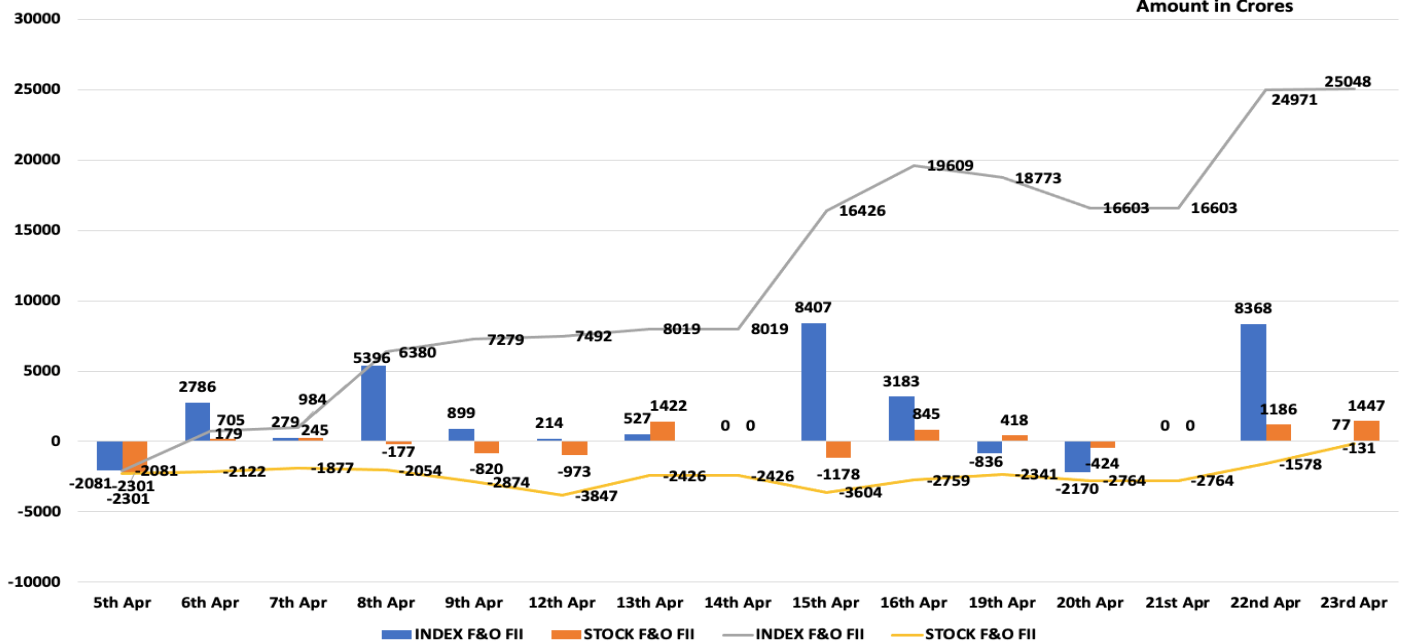
Amount in Crores



FII F&O DATA

FII F&O STATS DAILY AND CUMULATIVE

Amount in Crores





MOMENTUM PICK PERFORMANCE

DATE	ACTION	STOCK	EP	SL	TGT	CMP	STATUS	%GAIN
19-Oct	BUY	KANSAINER	502	466	580	550	TARGET ACHIEVED	12%
20-Oct	BUY	GODREJCP	691	669	742	699	FAIL	(3%)
22-Oct	BUY	VOLTAS	713	675	790	939	TARGET ACHIEVED	8%
26-Oct	BUY	ASHOKLEY	81.8	74	98	111	TARGET ACHIEVED	13%
26-Oct	BUY	CEATLTD	1122	1033	1300	1441	TARGET ACHIEVED	5%
28-Oct	BUY	HDFCLIFE	591	572	630	686	TARGET ACHIEVED	5%
02-Nov	BUY	KPRMILL	739	683	850	1218	TARGET ACHIEVED	8%
02-Nov	BUY	TATACONSUM	493	465	560	665	TARGET ACHIEVED	14%
02-Nov	BUY	COLPAL	1516	1434	1700	1514	PROFIT BOOKED @ 1598	5%
09 Nov	BUY	ESCORTS	1285	1200	1460	1138	TARGET ACHIEVED	6%
09 Nov	BUY	CROMPTON	309	289	350	355	FAIL	(7%)
12 Nov	BUY	JUBILANT	700	674	770	792	TARGET ACHIEVED	8%
17 Nov	BUY	AUROPHARMA	852	790	989	993	PROFIT BOOKED @910	7%
17 Nov	BUY	HINDALCO	209	194	240	350	TARGET ACHIEVED	10%
23 Nov	BUY	CCL	260	242	300	268	PROFIT BOOKED @268	3%
23 Nov	BUY	ENDURANCE	1084	1020	1260	1274	TARGET ACHIEVED	13%
23 Nov	BUY	POLYCAB	958	890	1100	1485	TARGET ACHIEVED	7%
03 Dec	BUY	CESC	620	585	690	597	FAIL	(6%)
07 Dec	BUY	BHARATFORG	552	512	630	582	FAIL	(7%)
07 Dec	BUY	MARICO	395	367	450	412	PROFIT BOOKED @ 422	7%
09 Dec	BUY	OFSS	3118	2960	3405	3267	TARGET ACHIEVED	8%
14 Dec	BUY	GLENMARK	527	490	615	599	FAIL	(7%)
14 Dec	BUY	ECLERX	809	757	936	1196	FAIL	(7%)
21-Dec	BUY	MPHASIS	1373	1280	1580	1697	TARGET ACHIEVED	12%
21-Dec	BUY	RELAXO	787	740	886	883	TARGET ACHIEVED	9%
28-Dec	BUY	SBILIFE	874	820	985	923	PROFIT BOOKED @ 953	9%
28-Dec	BUY	LALPATHLAB	2272	2120	2630	2885	PROFIT BOOKED @ 2440	7%
04-Jan	BUY	BAJAJ-AUTO	3481	3320	3834	3673	TARGET ACHIEVED	7%
04-Jan	BUY	METROPOLIS	2015	1880	2320	2387	TARGET ACHIEVED	12%
11-Jan	BUY	CRISIL	1956	1835	2210	1891	FAIL	(6%)
11-Jan	BUY	PIIND	2340	2200	2680	2523	FAIL	(6%)
18-Jan	BUY	CESC	692	640	790	597	FAIL	(8%)
18-Jan	BUY	PEL	1625	1522	1835	1647	FAIL	(7%)
25-Jan	BUY	GODREJCP	790	745	880	699	FAIL	(6%)



DATE	ACTION	STOCK	EP	SL	TGT	CMP	STATUS	%GAIN
25-Jan	BUY	FORTIS	165	152	198	2081	TARGET ACHIEVED	20%
28-Jan	BUY	AJANTA PHARMA	1755	1680	1980	1784	EXIT	(0.85%)
15-Feb	BUY	CDSL	538	496	630	721	TARGET ACHIEVED	17%
15-Feb	BUY	MGL	1141	1045	1350	1109	PARTIAL BOOKED @ 1251	10%
22-Feb	BUY	HINDPETRO	244-233	224	289	234	FAIL	(6%)
22-Feb	BUY	PETRONET	252	233	302	235	FAIL	(8%)
08-March	BUY	CUB	173.4	160	210	166	FAIL	(8%)
08-March	BUY	SBILIFE	904	940	1040	923	PARTIAL BOOKED @ 983	9%
15-March	BUY	AJANTPHARM	1833	1720	2150	1784	FAIL	(6%)
15-March	BUY	COFORGE	2722	2516	3225	2581	PARTIAL BOOKED @ 2940	8%
22-March	BUY	AARTIDRUGS	750-720	675	905	715	OPEN	-
22-March	BUY	ITC	223-215	205	270	205	OPEN	-
30-March	BUY	ECLERX	1029	960	1230	1196	TARGET ACHIEVED	18%
30-March	BUY	LALPATHLAB	2571-2500	2380	3000	2885	TARGET ACHIEVED	16%
05-April	BUY	FLUOROCHEM	611-590	559	720	717	PARTIAL BOOKED @ 709	16%
05-April	BUY	RELAXO	904	838	1060	883	OPEN	-

TOTAL CALLS	52
SUCCESS	29
FAIL	19
OPEN	4
SUCCESS RATIO	60.42%
% GAIN	18.24%



OPTION STRATEGY PERFORMANCE

DATE	ACTION	STOCK	EP	SL	TGT	EXIT	STATUS	Gain/Loss
23-Nov	BUY	NIFTY SPREAD	139	200	0	86	CLOSED	3975
1-Dec	BUY	BANKNIFTY SPREAD	578	761	0	258	CLOSED	8000
1-Dec	BUY	NIFTY SPREAD	139	200	0	145	CLOSED	-450
7-Dec	BUY	BANKNIFTY SPREAD	499	700	0	309	CLOSED	4750
14-Dec	BUY	BANKNIFTY SPREAD	552	750	0	281	CLOSED	6775
21-Dec	BUY	BANKNIFTY SPREAD	476	600	0	366	CLOSED	2750
28-Dec	BUY	BANKNIFTY SPREAD	477	600	0	600	CLOSED	-3075
4-Jan	BUY	BANKNIFTY SPREAD	530	680	0	680	CLOSED	-3750
11-Jan	BUY	BANKNIFTY SPREAD	488	600	0	390	CLOSED	2450
18-Jan	BUY	BANKNIFTY SPREAD	568	750	0	299	CLOSED	6725
25-Jan	BUY	BANKNIFTY SPREAD	534	700	0	700	CLOSED	-4150
8-Feb	BUY	BANKNIFTY SPREAD	430	600	0	105	CLOSED	8125
15-Feb	BUY	BANKNIFTY SPREAD	613	750	0	497	CLOSED	2900
22-Feb	BUY	BANKNIFTY SPREAD	617	750	0	658	CLOSED	-1025
1-March	BUY	BANKNIFTY SPREAD	427	600	0	286	CLOSED	3525
8-March	BUY	BANKNIFTY SPREAD	486	650	0	310	CLOSED	4400
15-March	BUY	BANKNIFTY SPREAD	495	650	0	387	CLOSED	2700
22-March	BUY	BANKNIFTY SPREAD	525	700	0	375	CLOSED	3750
29-March	BUY	BANKNIFTY SPREAD	660	800	0	500	CLOSED	4000
05-April	BUY	BANKNIFTY SPREAD	682	800	0	800	CLOSED	-2950

TOTAL CALLS	24
SUCCESS	16
FAIL	8
OPEN	0
SUCCESS RATIO	67%
% GAIN	35.89%

**Technical Research Desk****Tel: +91 22 61596406/11****Institutional Sales Desk****Tel: +91 22 61596403/04/05****Disclaimer Appendix****Analysts holding in the Stock : Nil****Analysts Certification:**

We analysts and the authors of this report, hereby certify that all of the views expressed in this research report accurately reflect our personal views about any and all of the subject issuer s or securities. We also certify that no part of our compensation was, is, or will be directly or indirectly related to the specific recommendation s or view s in this report. Analysts aren't registered as research analysts by FINRA and might not be an associated person of the BP Equities Pvt. Ltd. Institutional Equities.

General Disclaimer

This report has been prepared by the research department of BP EQUITIES Pvt. Ltd, is for information purposes only. This report is not construed as an offer to sell or the solicitation of an offer to buy or sell any security in any jurisdiction where such an offer or solicitation would be illegal.

BP EQUITIES Pvt. Ltd have exercised due diligence in checking the correctness and authenticity of the information contained herein, so far as it relates to current and historical information, but do not guarantee its accuracy or completeness. The opinions expressed are our current opinions as of the date appearing in the material and may be subject to change from time to time. Prospective investors are cautioned that any forward looking statement are not predictions and are subject to change without prior notice.

Recipients of this material should rely on their own investigations and take their own professional advice. BP EQUITIES Pvt. Ltd or any of its affiliates or employees shall not be in any way responsible for any loss or damage that may arise to any person from any inadvertent error in the information contained in this report. BP EQUITIES Pvt. Ltd. or any of its affiliates or employees do not provide, at any time, any express or implied warranty of any kind, regarding any matter pertaining to this report, including without limitation the implied warranties of merchantability, fitness for a particular purpose, and non-infringement. The recipients of this report should rely on their own investigations.

BP EQUITIES Pvt. Ltd and/or its affiliates and/or employees may have interests/ positions, financial or otherwise in the securities mentioned in this report. Opinions expressed are our current opinions as of the date appearing on this material only. While we endeavor to update on a reasonable basis the information discussed in this material, there may be regulatory, compliance, or other reasons that prevent us from doing so.

This report is not directed to or intended for display, downloading, printing, reproducing or for distribution to or use by any person in any locality, state and country or other jurisdiction where such distribution, publication or use would be contrary to the law or regulation or would subject to BP EQUITIES Pvt. Ltd or any of its affiliates to any registration or licensing requirement within such jurisdiction.

Corporate Office:**4th floor, Rustom Bldg,****29, Veer Nariman Road, Fort, Mumbai-400001****Phone- +91 22 6159 6464 Fax-+91 22 6159 6160****Website- www.bpwealth.com****Registered Office:****24/26, 1st Floor, Cama Building,****Dalal street, Fort,****Mumbai-400001****BP Equities Pvt. Ltd.****CIN No: U67120MH1997PTC107392**