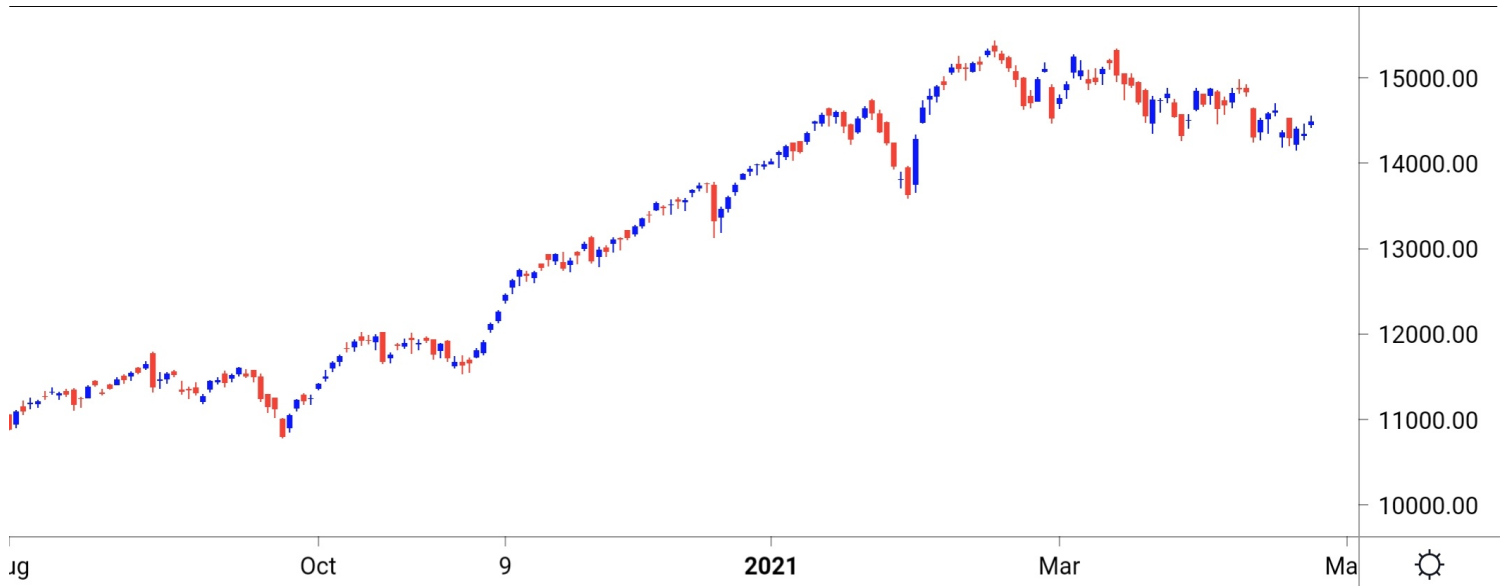


NIFTY SPOT : IMMEDIATE SUPPORT AT 14430-14350



Source: Falcon, BP Equities Research

Nifty spot closed 1.00% higher at 14485. Index opened with wide gap up and traded in narrow range throughout the day closing session near opening price. Going ahead index has an immediate resistance around 14550-14600-14700. While on the other hand support is placed around 14430-14350-14250.

Intraday Nifty

Resistance - 14550-14600-14700

Support - 14430-14350-14250

BANK NIFTY SPOT : IMMEDIATE SUPPORT AT 32000-31800



Source: Falcon, BP Equities Research

Bank Nifty spot closed 1.74% higher at 32275. Banknifty opened with gap up and traded in narrow range throughout the day closing session near opening price. Going forward Banknifty has an immediate support around 32000-31800-31500. While on the higher side resistance is visible around 32500-32800-33000.

Intraday Bank Nifty

Resistance - 32500-32800-33000

Support - 32000-31800-31500

Technical Trend

INTRADAY TRADER'S PICKS

Sr.No.	STOCK	CLOSE	Target 1	Target 2	Stop Loss	RECOMMENDATION
1	INFY	1343	1365	1380	1335	BUY ABOVE 1350
2	ACC	1844	1870	1890	1830	BUY ABOVE 1850
3	HDFC	2509	2545	2570	2495	BUY ABOVE 2520
4	MARUTI	6638	6565	6505	6685	SELL BELOW 6625
5	DRREDDY	5066	5000	4950	5100	SELL BELOW 5050

DERIVATIVES

INDICES SNAPSHOT

SCRIPS	CP AS ON 23/4/2021	CP AS ON 26/4/2021	Change (%)	OI AS ON 23/4/2021	OI AS ON 26/4/2021	Change (%)
BANKNIFTY	31709.6	32302.55	1.87	1934925	2223125	14.89
FINNIFTY	15237.8	15450.75	1.40	16000	17720	10.75
NIFTY	14338.6	14486.2	1.03	12421500	12853050	3.47

Derivative Highlights

- ⇒ Nifty Future closed with a Premium of 2 points v/s a Discount of 8 points in the previous session.
- ⇒ Nifty Future Open Interest Increased by 3.47%. Bank Nifty Future Open Interest Increased by 14.89%.
- ⇒ Nifty PCR - OI Increased from 1.08 to 1.24, Nifty Bank PCR - OI Increased from 1.03 to 1.14.
- ⇒ FII Sold Rs 1111.89 crore while DII Bought Rs 1022.57 crore in the Cash Segment. FII Bought Rs 1218.11 crore in Index Futures, Bought Rs 901.68 crore in index options, while in Future they Bought Rs 1210.48 crore and Bought Rs 73.39 in stock options.
- ⇒ Among Index Option space, Highest Open Interest concentration was seen in 14000 & 13500 Strike price among the PE options. Where as among CE Options Highest Open Interest Concentration was seen in 15000 & 14800 Strike price.
- ⇒ Highest Open Interest Build Up among the PE options was seen in 14400 & 14500 Strike price. Among CE options highest build up was seen in 14900 & 14950 Strike price.

OI Concentration

PUT OPTION		CALL OPTION	
Strike Price	Open Interest	Strike Price	Open Interest
14000	5968575	15000	5523825
13500	3905625	14800	3470550
14300	3286875	14500	2800575
14500	3219375	14900	2724600
14200	3125850	15500	2655675

Highest Change in OI

PUT OPTION		CALL OPTION	
Strike Price	Change in OI	Strike Price	Change in OI
14400	1046325	14900	526875
14500	976125	14950	408300
13800	790350	14850	296475
13700	781575	14750	255150
13500	740175	14550	249675

MWPL

SCRIPS	OI %	BAN
SAIL	112%	YES
CANBK	88%	NO
CADILAHC	87%	NO
SUNTV	86%	YES
IBULHSGFIN	82%	YES
PNB	82%	NO
NATIONALUM	80%	NO
ADANI PORTS	76%	NO
BHEL	76%	NO
TATAPOWER	70%	NO

Technical Trend

Stock Analysis

Long Build-up	Long Unwinding	Short Build-up	Short Covering
AXISBANK	CHOLAFIN	BANDHANBNK	ACC
BAJAJ-AUTO	HDFCBANK	CIPLA	ASIANPAINT
BHARTIARTL	SUNPHARMA	COLPAL	BERGEPAIN
CANBK	ZEEL	DABUR	DLF
CONCOR		GLENMARK	HDFC
DIVISLAB		HINDALCO	ICICIBANK

STATISTICS

Highest Premium

SCRIPS	Premium %	Price change %

Highest Discount

SCRIPS	Premium %	Price change %

TOP 5 VOLUME GAINER FOR THE SESSION

SCRIPS	CP AS ON 23/4/2021	CP AS ON 26/4/2021	Change (%)	VOL AS ON 23/4/2021	VOL AS ON 26/4/2021	Change (%)
SAIL	93.25	100.4	7.67	281	9093	3135.94
SUNTV	454.8	466.35	2.54	29	153	427.59
ICICIGI	1384.6	1451.45	4.83	709	2569	262.34
EICHERMOT	2321.8	2375.7	2.32	1465	4897	234.27
MPHASIS	1696.65	1724.75	1.66	641	1864	190.80

TOP 5 VOLUME LOSER FOR THE SESSION

SCRIPS	CP AS ON 23/4/2021	CP AS ON 26/4/2021	Change (%)	VOL AS ON 23/4/2021	VOL AS ON 26/4/2021	Change (%)
LALPATHLAB	2892.25	2841.95	-1.74	2465	933	-62.15
TRENT	771.15	782.05	1.41	1761	815	-53.72
NAUKRI	4872.35	4894.55	0.46	4012	2114	-47.31
APLLTD	1000.3	1002.85	0.25	665	354	-46.77
TORNTPOWER	393.65	392.8	-0.22	575	313	-45.57

Technical Trend

TOP 10 OPEN INTEREST GAINER FOR THE SESSION

SCRIPS	CP AS ON 23/4/2021	CP AS ON 26/4/2021	Change (%)	OI AS ON 23/4/2021	OI AS ON 26/4/2021	Change (%)
SAIL	93.25	100.4	7.67	119320000	166383000	39.44
M&MFIN	179.2	162.55	-9.29	17732000	24112000	35.98
PAGEIND	29199.7	30383.3	4.05	57390	69210	20.60
GUJGASLTD	545.1	547.5	0.44	877500	1050000	19.66
COFORGE	2852.05	2810.8	-1.45	575250	680250	18.25
BRITANNIA	3647.15	3535.45	-3.06	2120800	2497800	17.78
AUBANK	1072.25	1045.95	-2.45	3507500	4113500	17.28
DABUR	559.5	541.4	-3.24	9501250	11061250	16.42
BANKNIFTY	31709.6	32302.55	1.87	1934925	2223125	14.89
M&M	779.85	781.75	0.24	9368800	10687600	14.08

TOP 10 OPEN INTEREST LOSER FOR THE SESSION

SCRIPS	CP AS ON 23/4/2021	CP AS ON 26/4/2021	Change (%)	OI AS ON 23/4/2021	OI AS ON 26/4/2021	Change (%)
IBULHSGFIN	176.75	180.35	2.04	30637300	28067400	-8.39
NAVINFLUOR	3170.6	3203.45	1.04	349650	321975	-7.92
IDFCFIRSTB	51.1	52.3	2.35	199272000	184851000	-7.24
GODREJPROP	1314.7	1366.45	3.94	1959750	1839500	-6.14
BHEL	45.3	46.15	1.88	110712000	104559000	-5.56
RBLBANK	178.25	184.75	3.65	29258100	27822600	-4.91
COALINDIA	126.05	127.05	0.79	49417200	47082000	-4.73
DRREDDY	5078.6	5073.4	-0.10	3649375	3501000	-4.07
HINDUNILVR	2312.45	2357.95	1.97	6759600	6493500	-3.94
RELIANCE	1903.75	1936.2	1.70	30003250	28838500	-3.88

Technical Trend

Pivot Report– Nifty F&O

Symbol	Last Rate	Pivot	Support3	Support2	Support 1	Resist1	Resist2	Resist3
Aarti Industries Ltd.	1492.1	1485.4	1438.0	1451.6	1471.8	1505.7	1519.3	1539.5
ACC Ltd.	1844.8	1838.0	1789.3	1803.3	1824.0	1858.7	1872.7	1893.4
Adani Enterprises Ltd.	1173.4	1177.1	1118.4	1139.2	1156.3	1194.2	1215.0	1232.1
Adani Ports & Special Economic Zone Ltd.	730.8	733.1	715.8	722.4	726.6	737.3	743.9	748.1
Alembic Pharmaceuticals Ltd.	1000.9	1000.9	978.2	985.7	993.3	1008.5	1016.0	1023.6
Alkem Laboratories Ltd.	2797.9	2790.3	2678.4	2713.1	2755.5	2832.7	2867.4	2909.8
Amara Raja Batteries Ltd.	801.3	804.3	784.3	792.0	796.6	808.9	816.6	821.2
Ambuja Cements Ltd.	303.4	301.0	288.3	291.8	297.6	306.8	310.3	316.1
Apollo Hospitals Enterprises Ltd.	3174.7	3193.2	3032.4	3092.2	3133.4	3234.4	3294.2	3335.4
Apollo Tyres Ltd.	200.2	201.7	192.8	196.3	198.2	203.7	207.2	209.1
Ashok Leyland Ltd.	114.1	113.6	109.5	110.7	112.4	115.3	116.5	118.2
Asian Paints Ltd.	2557.9	2554.3	2488.6	2509.3	2533.6	2578.6	2599.3	2623.6
Au Small Finance Bank Ltd.	1051.5	1064.2	981.3	1013.2	1032.3	1083.3	1115.2	1134.3
Aurobindo Pharma Ltd.	971.2	979.3	925.5	946.1	958.7	991.9	1012.5	1025.1
Axis Bank Ltd.	700.5	696.3	669.4	677.0	688.7	708.0	715.6	727.3
Bajaj Auto Ltd.	3738.9	3721.3	3620.6	3648.3	3693.6	3766.6	3794.3	3839.6
Bajaj Finance	4736.6	4751.9	4535.7	4612.9	4674.7	4813.7	4890.9	4952.7
Bajaj Finserv Ltd.	10001.8	10009.7	9671.5	9786.9	9894.3	10117.1	10232.5	10339.9
Balkrishna Industries Ltd.	1705.6	1710.5	1654.4	1674.7	1690.1	1725.9	1746.2	1761.6
Bandhan Bank Ltd.	313.2	314.0	302.2	306.4	309.8	317.4	321.6	325.0
BANK NIFTY	32275.2	32341.2	31619.9	31882.3	32078.8	32537.7	32800.1	32996.6
Bank of Baroda	63.6	63.7	61.8	62.5	63.0	64.3	65.0	65.5
Bata India Ltd.	1341.7	1330.6	1270.3	1286.7	1314.2	1358.1	1374.5	1402.0
Berger Paints India Ltd.	722.4	720.6	701.4	707.2	714.8	728.2	734.0	741.6
Bharat Electronics Ltd.	129.4	128.9	126.1	126.9	128.1	130.1	130.9	132.1
Bharat Forge Ltd.	576.6	577.9	547.2	557.9	567.2	587.2	597.9	607.2
Bharat Heavy Electricals Ltd.	46.2	46.1	44.6	45.1	45.6	46.6	47.1	47.6
Bharat Petroleum Corporation Ltd.	418.9	421.6	404.1	410.8	414.9	425.7	432.4	436.5
Bharti Airtel Ltd.	527.6	526.3	518.3	520.5	524.0	529.8	532.0	535.5
Biocon Ltd.	395.5	397.2	387.1	391.0	393.3	399.5	403.4	405.7
Bosch Ltd.	13496.7	13567.7	13137.0	13304.2	13400.5	13664.0	13831.2	13927.5
Britannia Industries Ltd.	3539.2	3577.4	3361.8	3446.4	3492.8	3623.8	3708.4	3754.8
Cadila Healthcare Ltd.	569.6	579.9	514.9	540.0	554.8	594.7	619.8	634.6
Canara Bank	135.3	134.3	128.7	130.2	132.7	136.8	138.3	140.8
Cholamandalam Investment and Finance Company	552.4	557.4	527.8	539.4	545.9	563.9	575.5	582.0
Cipla Ltd.	905.4	915.9	853.9	878.0	891.7	929.6	953.7	967.4
City Union Bank Ltd.	165.0	165.3	158.4	160.8	162.9	167.4	169.8	171.9
Coal India Ltd	127.0	127.2	124.8	125.7	126.3	127.8	128.7	129.3
Coforge Ltd.	2808.1	2836.3	2670.5	2735.1	2771.6	2872.8	2937.4	2973.9
Colgate Palmolive (India) Ltd.	1504.6	1510.2	1474.4	1488.2	1496.4	1518.4	1532.2	1540.4
Container Corporation of India Ltd.	555.3	555.5	542.6	547.0	551.1	559.6	564.0	568.1
Cummins India Ltd.	876.8	869.8	826.0	838.3	857.5	889.0	901.3	920.5
Dabur India Ltd.	541.3	547.8	510.0	524.8	533.0	556.1	570.9	579.1
Deepak Nitrite	1637.5	1633.0	1563.9	1585.4	1611.5	1659.1	1680.6	1706.7
Divi's Laboratories Ltd.	3784.4	3799.1	3683.7	3727.1	3755.7	3827.8	3871.2	3899.8
DLF Ltd.	246.8	245.9	238.0	240.3	243.6	249.1	251.4	254.7
Dr. Lal Pathlabs Ltd.	2840.2	2866.1	2715.1	2774.1	2807.1	2899.1	2958.1	2991.1
Dr. Reddy's Laboratories Ltd.	5066.7	5075.7	4921.6	4975.9	5021.3	5121.1	5175.4	5220.8
Eicher Motors Ltd.	2369.9	2358.5	2294.2	2311.9	2340.9	2387.5	2405.2	2434.2
Escorts Ltd.	1129.0	1134.3	1094.1	1109.3	1119.1	1144.1	1159.3	1169.1
Exide Industries Ltd.	171.6	172.0	169.2	170.3	170.9	172.7	173.8	174.4

Technical Trend

Symbol	Last Rate	Pivot	Support3	Support2	Support 1	Resist1	Resist2	Resist3
Federal Bank Ltd.	74.0	74.0	70.2	71.5	72.7	75.2	76.5	77.7
GAIL (India) Ltd.	130.0	130.6	126.9	128.3	129.2	131.4	132.8	133.7
Glenmark Pharmaceuticals Ltd.	552.2	557.5	525.3	537.8	545.0	564.6	577.1	584.3
GMR Infrastructure Ltd.	22.9	22.9	22.4	22.6	22.7	23.1	23.3	23.4
Godrej Consumer Products Ltd.	695.4	698.2	680.7	687.5	691.4	702.1	708.9	712.8
Godrej Properties Ltd.	1366.3	1352.8	1270.0	1293.1	1329.7	1389.3	1412.4	1449.0
Granules India	325.6	328.1	311.1	317.6	321.6	332.1	338.6	342.6
Grasim Industries Ltd.	1312.4	1306.1	1255.2	1270.1	1291.2	1327.2	1342.1	1363.2
Gujarat Gas Co. Ltd.	545.8	551.4	516.3	529.9	537.8	559.3	572.9	580.8
Havell's India Ltd.	1000.1	1001.3	965.1	977.6	988.8	1012.6	1025.1	1036.3
HCL Technologies Ltd.	928.8	935.5	885.0	904.0	916.4	947.9	966.9	979.3
HDFC Asset Management Company Ltd.	2832.4	2834.5	2765.9	2789.5	2810.9	2855.9	2879.5	2900.9
HDFC Bank Ltd.	1404.8	1412.2	1369.1	1385.9	1395.4	1421.6	1438.4	1447.9
HDFC Life Insurance Company Ltd.	704.5	699.9	670.8	679.0	691.7	712.7	720.9	733.6
Hero MotoCorp Ltd.	2864.6	2857.7	2788.5	2809.3	2836.9	2885.3	2906.1	2933.7
Hindalco Industries Ltd.	348.4	350.7	330.4	338.0	343.2	355.9	363.5	368.7
Hindustan Petroleum Corporation Ltd.	232.5	232.6	226.1	228.3	230.4	234.7	236.9	239.0
Hindustan Unilever Ltd.	2360.7	2347.2	2265.7	2288.4	2324.5	2383.3	2406.0	2442.1
Housing Development Finance	2509.8	2509.0	2433.1	2458.1	2484.0	2534.9	2559.9	2585.8
I T C Ltd.	205.3	205.6	202.4	203.5	204.4	206.5	207.6	208.5
ICICI Bank Ltd.	591.1	594.9	566.7	577.4	584.2	601.7	612.4	619.2
ICICI Lombard General Insurance Company Ltd.	1451.6	1434.6	1335.0	1362.5	1407.1	1479.2	1506.7	1551.3
ICICI Prudential Life Insurance	543.9	532.4	477.0	491.6	517.8	558.5	573.1	599.3
IDFC First Bank Ltd.	52.3	52.2	50.5	51.1	51.7	52.8	53.4	54.0
Indiabulls Housing Finance	179.3	178.3	167.8	171.0	175.1	182.4	185.6	189.7
Indian Oil Corporation Ltd.	88.2	88.3	86.7	87.2	87.7	88.8	89.3	89.8
Indian Railway Catering & Tourism	1730.9	1729.4	1698.2	1708.1	1719.5	1740.7	1750.6	1762.0
Indraprastha Gas Ltd.	508.8	510.4	495.4	500.9	504.9	514.4	519.9	523.9
Indus Towers Ltd.	248.2	250.5	236.1	241.7	244.9	253.7	259.3	262.5
IndusInd Bank Ltd.	859.6	860.7	830.9	841.2	850.4	869.9	880.2	889.4
Info Edge (India) Ltd.	4892.3	4897.9	4721.9	4782.4	4837.4	4952.9	5013.4	5068.4
Infosys Ltd.	1343.6	1338.6	1295.6	1308.3	1325.9	1356.2	1368.9	1386.5
Interglobe Aviation	1573.1	1567.7	1510.4	1527.7	1550.4	1590.4	1607.7	1630.4
Jindal Steel & Power Ltd.	443.0	444.3	424.5	431.6	437.3	450.0	457.1	462.8
JSW Steel Ltd.	655.8	651.6	620.0	629.1	642.5	664.9	674.0	687.4
Jubilant Foodworks Limited	2885.9	2863.8	2730.2	2767.4	2826.6	2923.0	2960.2	3019.4
Kotak Mahindra Bank Ltd.	1759.7	1758.7	1684.6	1709.0	1734.3	1784.0	1808.4	1833.7
L&T Finance Holdings Ltd.	87.7	88.9	82.4	85.0	86.3	90.2	92.8	94.1
L&T Technology Services	2620.9	2637.6	2512.2	2559.6	2590.2	2668.3	2715.7	2746.3
Larsen & Toubro Infotech	3934.1	3943.7	3796.4	3848.7	3891.4	3986.3	4038.6	4081.3
Larsen & Toubro Ltd.	1335.9	1333.4	1307.3	1315.2	1325.5	1343.7	1351.6	1361.9
LIC Housing Finance Ltd.	397.5	396.0	387.0	389.5	393.5	400.0	402.5	406.5
Lupin Ltd.	1062.6	1066.7	1028.3	1042.5	1052.5	1076.8	1091.0	1101.0
Mahanagar Gas Ltd	1102.7	1107.8	1074.1	1087.1	1094.9	1115.6	1128.6	1136.4
Mahindra & Mahindra Financial	163.3	164.4	152.2	156.7	160.0	167.7	172.2	175.5
Mahindra & Mahindra Ltd.	780.5	783.2	755.4	765.5	773.0	790.7	800.8	808.3
Manappuram Finance Limited	146.7	147.4	142.1	144.1	145.4	148.7	150.7	152.0
Marico Ltd.	406.4	408.4	393.0	398.8	402.6	412.2	418.0	421.8
Maruti Suzuki India Ltd.	6638.9	6676.0	6373.9	6487.0	6562.9	6751.9	6865.0	6940.9
Max Financial Services Ltd.	881.9	876.6	827.3	842.0	861.9	896.5	911.2	931.1

Technical Trend

Symbol	Last Rate	Pivot	Support3	Support2	Support 1	Resist1	Resist2	Resist3
Motherson Sumi Systems Ltd.	212.7	213.7	204.1	207.6	210.1	216.2	219.7	222.2
MphasiS Ltd.	1724.3	1748.4	1600.3	1657.7	1691.0	1781.7	1839.1	1872.4
MRF Ltd.	77687.5	78156.1	75204.0	76344.2	77015.9	78827.8	79968.0	80639.7
Muthoot Finance	1174.8	1187.2	1113.6	1142.3	1158.5	1203.5	1232.2	1248.4
National Aluminium Co. Ltd.	57.9	57.9	55.5	56.3	57.1	58.7	59.5	60.3
Navin Fluorine International Ltd.	3204.6	3220.6	3043.4	3107.8	3156.2	3269.0	3333.4	3381.8
Nestle India Ltd.	16870.6	16809.8	16493.2	16578.5	16724.5	16955.8	17041.1	17187.1
Nippon Life India Asset Management Ltd.	330.7	330.2	321.8	324.4	327.6	333.3	335.9	339.1
NMDC Ltd.	142.7	141.8	135.9	137.6	140.1	144.4	146.1	148.6
NTPC Ltd.	102.4	102.4	97.8	99.3	100.9	104.0	105.5	107.1
Oil & Natural Gas Corporation Ltd.	102.8	103.7	98.4	100.5	101.6	104.8	106.9	108.0
Page Industries	30282.7	29986.1	28367.6	28808.2	29545.5	30723.4	31164.0	31901.3
Petronet LNG Ltd.	238.1	236.8	228.9	231.1	234.6	240.3	242.5	246.0
Pfizer Ltd.	5151.0	5167.2	4964.8	5037.7	5094.3	5223.8	5296.7	5353.3
PI Industries Limited	2509.0	2521.7	2416.3	2455.6	2482.3	2548.4	2587.7	2614.4
Pidilite Industries Ltd.	1837.2	1820.9	1738.3	1760.4	1798.8	1859.3	1881.4	1919.8
Piramal Enterprises	1635.2	1648.3	1553.8	1589.6	1612.4	1671.1	1706.9	1729.7
Power Finance Corporation Ltd.	107.0	107.2	105.0	105.8	106.4	107.8	108.6	109.2
Power Grid Corporation of India Ltd.	215.8	213.5	202.3	205.2	210.5	218.8	221.7	227.0
Punjab National Bank	34.5	34.5	33.8	34.0	34.2	34.7	34.9	35.1
PVR Limited	1157.3	1156.9	1087.0	1110.2	1133.7	1180.4	1203.6	1227.1
RBL Bank	184.2	183.0	175.4	177.5	180.9	186.4	188.5	191.9
REC Ltd.	128.3	127.7	124.0	125.0	126.7	129.3	130.3	132.0
Reliance Industries Ltd.	1937.9	1937.1	1861.7	1886.6	1912.2	1962.7	1987.6	2013.2
S&P CNX NIFTY	14485.0	14487.9	14282.2	14351.7	14418.4	14554.6	14624.1	14690.8
SBI Life Insurance Company Ltd.	942.5	935.1	892.5	904.2	923.4	954.3	966.0	985.2
Shree Cement Ltd.	28062.6	28152.6	27368.0	27659.5	27861.1	28354.2	28645.7	28847.3
Shriram Transport Finance Co. Ltd.	1339.1	1348.4	1264.3	1295.5	1317.3	1370.2	1401.4	1423.2
Siemens Ltd.	1810.2	1814.8	1763.9	1782.4	1796.3	1828.7	1847.2	1861.1
SRF Ltd.	6203.2	6240.2	5791.1	5953.1	6078.2	6365.3	6527.3	6652.4
State Bank of India	344.3	343.7	331.7	335.5	339.9	348.1	351.9	356.3
Steel Authority of India Ltd.	100.5	98.9	90.2	92.5	96.5	102.9	105.2	109.2
Sun Pharmaceutical Industries Ltd.	634.7	636.6	616.1	623.6	629.1	642.1	649.6	655.1
Sun TV Network Ltd.	466.6	464.1	448.0	452.5	459.6	471.1	475.6	482.7
Tata Chemicals Ltd.	733.7	734.6	713.1	720.6	727.1	741.1	748.6	755.1
Tata Consultancy Services Ltd.	3100.8	3114.0	3010.0	3049.0	3074.9	3139.9	3178.9	3204.8
Tata Consumer Products Ltd.	670.2	669.1	650.2	656.1	663.2	676.1	682.0	689.1
Tata Motors Ltd.	295.4	296.3	289.3	291.9	293.7	298.1	300.7	302.5
Tata Power Co. Ltd.	96.3	96.3	93.8	94.7	95.5	97.1	98.0	98.8
Tata Steel Ltd.	940.8	942.3	902.6	916.3	928.5	954.5	968.2	980.4
Tech Mahindra Ltd.	962.2	956.4	909.8	923.4	942.8	975.8	989.4	1008.8
The Ramco Cements Ltd.	959.9	970.9	910.1	934.0	946.9	983.8	1007.7	1020.6
Titan Company Ltd.	1479.9	1478.3	1442.2	1453.7	1466.8	1491.4	1502.9	1516.0
Torrent Pharmaceuticals Ltd.	2511.5	2520.9	2459.2	2482.9	2497.2	2535.1	2558.8	2573.1
Torrent Power Ltd.	391.5	392.7	378.0	383.3	387.4	396.7	402.0	406.1
Trent Ltd.	780.5	776.5	740.8	751.3	765.9	791.1	801.6	816.2
TVS Motor Company Ltd.	552.7	546.0	512.1	521.2	536.9	561.8	570.9	586.6
UltraTech Cement Ltd.	6275.9	6226.7	5978.7	6045.0	6160.4	6342.2	6408.5	6523.9
United Breweries Ltd.	1143.3	1144.1	1093.6	1110.7	1127.0	1160.4	1177.5	1193.8
United Spirits Ltd.	518.1	520.0	505.4	510.9	514.5	523.6	529.1	532.7
UPL Ltd.	590.7	591.5	573.1	579.5	585.1	597.1	603.5	609.1
Vedanta Ltd	236.7	235.3	220.8	225.2	230.9	241.0	245.4	251.1
Vodafone Idea Ltd.	8.5	8.5	8.3	8.4	8.4	8.6	8.7	8.7
Voltas Ltd.	946.2	945.6	931.8	936.2	941.2	950.6	955.0	960.0
Wipro Ltd.	480.3	480.4	470.1	473.5	476.9	483.8	487.2	490.6
Zee Entertainment Enterprises Ltd	186.4	187.5	178.0	181.5	184.0	190.0	193.5	196.0

**Disclaimer Appendix****Analyst s holding in the Stock : Nil****Analyst s Certification:**

We analysts and the authors of this report, hereby certify that all of the views expressed in this research report accurately reflect our personal views about any and all of the subject issuer s or securities. We also certify that no part of our compensation was, is, or will be directly or indirectly related to the specific recommendation s or view s in this report. Analysts aren't registered as research analysts by FINRA and might not be an associated person of the BP Equities Pvt. Ltd. Institutional Equities.

General Disclaimer

This report has been prepared by the research department of BP EQUITIES Pvt. Ltd, is for information purposes only. This report is not construed as an offer to sell or the solicitation of an offer to buy or sell any security in any jurisdiction where such an offer or solicitation would be illegal.

BP EQUITIES Pvt. Ltd have exercised due diligence in checking the correctness and authenticity of the information contained herein, so far as it relates to current and historical information, but do not guarantee its accuracy or completeness. The opinions expressed are our current opinions as of the date appearing in the material and may be subject to change from time to time. Prospective investors are cautioned that any forward looking statement are not predictions and are subject to change without prior notice.

Recipients of this material should rely on their own investigations and take their own professional advice. BP EQUITIES Pvt. Ltd or any of its affiliates or employees shall not be in any way responsible for any loss or damage that may arise to any person from any inadvertent error in the information contained in this report. BP EQUITIES Pvt. Ltd. or any of its affiliates or employees do not provide, at any time, any express or implied warranty of any kind, regarding any matter pertaining to this report, including without limitation the implied warranties of merchantability, fitness for a particular purpose, and non-infringement. The recipients of this report should rely on their own investigations.

BP EQUITIES Pvt. Ltd and/or its affiliates and/or employees may have interests/ positions, financial or otherwise in the securities mentioned in this report. Opinions expressed are our current opinions as of the date appearing on this material only. While we endeavor to update on a reasonable basis the information discussed in this material, there may be regulatory, compliance, or other reasons that prevent us from doing so.

This report is not directed to or intended for display, downloading, printing, reproducing or for distribution to or use by any person in any locality, state and country or other jurisdiction where such distribution, publication or use would be contrary to the law or regulation or would subject to BP EQUITIES Pvt. Ltd or any of its affiliates to any registration or licensing requirement within such jurisdiction.

Corporate Office:

4th floor,
Rustom Bldg,
29, Veer Nariman Road, Fort,
Mumbai-400001
Phone- +91 22 6159 6464
Fax-+91 22 6159 6160
Website- www.bpwealth.com

Registered Office:

24/26, 1st Floor, Cama Building,
Dalal street, Fort,
Mumbai-400001
BP Equities Pvt. Ltd.
CIN No: U67120MH1997PTC107392