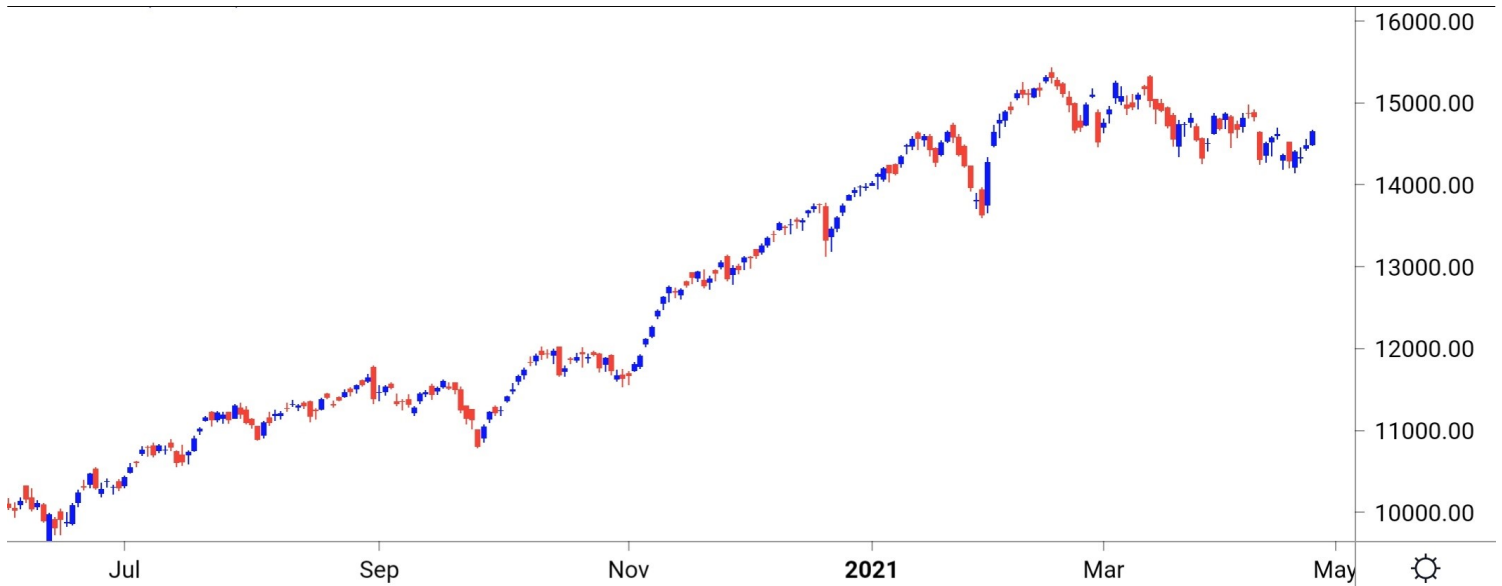


NIFTY SPOT : IMMEDIATE SUPPORT AT 14580-14500



Source: Falcon, BP Equities Research

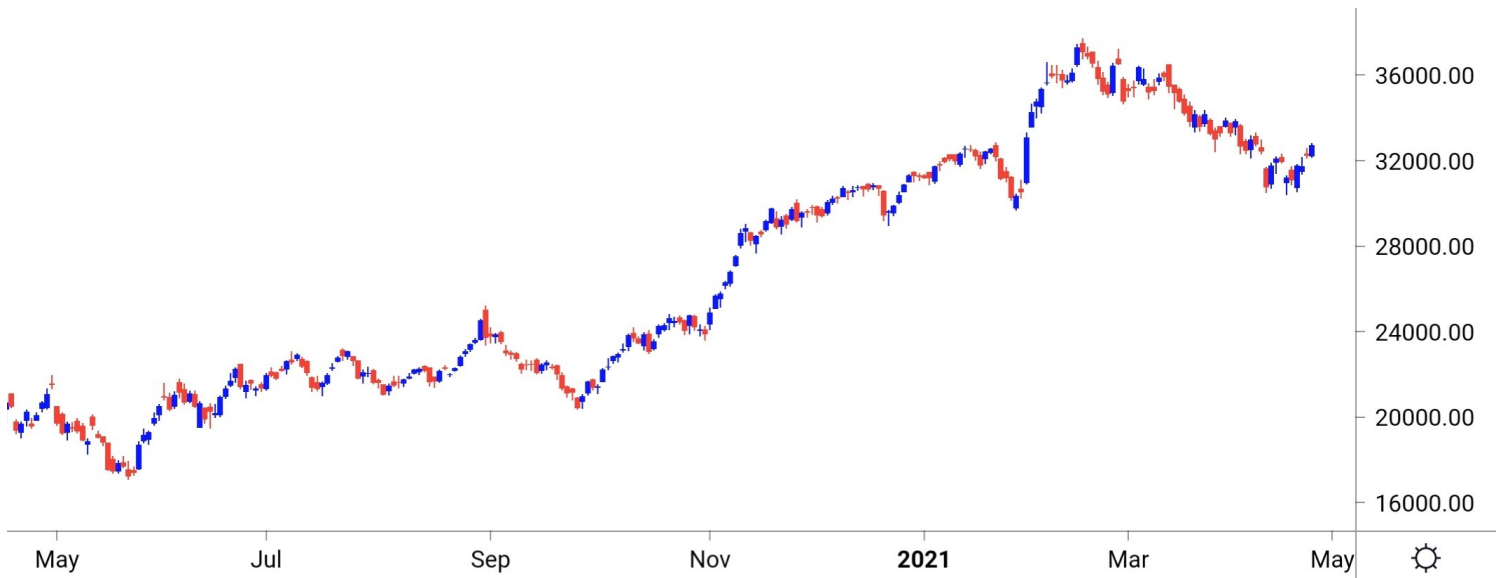
Nifty spot closed 1.16% higher at 14653. Index opened on a flat note and remained strong throughout the day closing session near days high with decent gains. Going ahead index has an immediate resistance around 14720, sustenance above the same will open the gate for 14800-14900. While on downside support is visible around 14580-14500-14400.

Intraday Nifty

Resistance - 14720-14800-14900

Support - 14580-14500-14400

BANK NIFTY SPOT : IMMEDIATE SUPPORT AT 32500-32300



Source: Falcon, BP Equities Research

Bank Nifty spot closed 1.43% higher at 32735. Banknifty opened on a flat note but remained strong throughout the day closing session near days highs. Banknifty has given breakout from bullish Double Bottom price pattern which is bullish signal for short term trend. Going forward Banknifty has an immediate resistance around 33000-33300-33500. On the opposite side support is seen around 32500-32300-32000.

Intraday Bank Nifty

Resistance - 33000-33300-33500

Support - 32500-32300-32000

Technical Trend

INTRADAY TRADER'S PICKS

Sr.No.	STOCK	CLOSE	Target 1	Target 2	Stop Loss	RECOMMENDATION
1	INFY	1348	1370	1385	1340	BUY ABOVE 1355
2	TATASTEEL	977	990	1000	970	BUY ABOVE 980
3	BAJAJ-AUTO	3785	3840	3880	3760	BUY ABOVE 3800
4	DRREDDY	5057	5000	4950	5100	SELL BELOW 5050
5	MARUTI	6568	6490	6430	6610	SELL BELOW 6550

DERIVATIVES

INDICES SNAPSHOT

SCRIPS	CP AS ON 26/4/2021	CP AS ON 27/4/2021	Change (%)	OI AS ON 26/4/2021	OI AS ON 27/4/2021	Change (%)
BANKNIFTY	32302.55	32741.95	1.36	2223125	2332700	4.93
FINNIFTY	15450.75	15597.1	0.95	17720	19440	9.71
NIFTY	14486.2	14644.7	1.09	12853050	13539225	5.34

Derivative Highlights

- ⇒ Nifty Future closed with a Discount of 8 points v/s a Premium of 2 points in the previous session.
- ⇒ Nifty Future Open Interest Increased by 5.34%. Bank Nifty Future Open Interest Increased by 4.93%.
- ⇒ Nifty PCR - OI Increased from 1.24 to 1.43, Nifty Bank PCR - OI Increased from 1.14 to 1.25.
- ⇒ FII Sold Rs 1454.75 crore while DII Bought Rs 1463.44 crore in the Cash Segment. FII Sold Rs 63.56 crore in Index Futures, Bought Rs 2028.9 crore in index options, while in Future they Bought Rs 953.06 crore and Sold Rs 14.33 in stock options.
- ⇒ Among Index Option space, Highest Open Interest concentration was seen in 14000 & 14500 Strike price among the PE options. Where as among CE Options Highest Open Interest Concentration was seen in 15000 & 14800 Strike price.
- ⇒ Highest Open Interest Build Up among the PE options was seen in 14500 & 14600 Strike price. Among CE options highest build up was seen in 14650 & 14900 Strike price.

OI Concentration

PUT OPTION		CALL OPTION	
Strike Price	Open Interest	Strike Price	Open Interest
14000	5987175	15000	5220300
14500	5507850	14800	3570300
14400	3670275	14900	2916600
13500	3641700	15200	2578125
14300	3577800	15500	2369775

Highest Change in OI

PUT OPTION		CALL OPTION	
Strike Price	Change in OI	Strike Price	Change in OI
14500	2288475	14650	238275
14600	1865775	14900	192000
14400	968850	14850	163200
14550	709275	15200	142425
14650	452550	14950	102225

MWPL

SCRIPS	OI %	BAN
SAIL	102%	YES
CANBK	89%	NO
NATIONALUM	86%	NO
CADILAHC	81%	NO
SUNTV	77%	NO
PNB	76%	NO
IBULHSGFIN	76%	NO
BHEL	76%	NO
ADANI PORTS	74%	NO
IDEA	69%	NO

Technical Trend

Stock Analysis

Long Build-up	Long Unwinding	Short Build-up	Short Covering
AARTIIND	LALPATHLAB	ALKEM	AMARAJABAT
AXISBANK		BERGEPAIN	ASIANPAINT
BIOCON		COLPAL	BANKBARODA
DIVISLAB		HDFCLIFE	DLF
HINDALCO		KOTAKBANK	GODREJCP
PEL		LTI	LT

STATISTICS

Highest Premium

SCRIPS	Premium %	Price change %

Highest Discount

SCRIPS	Premium %	Price change %

TOP 5 VOLUME GAINER FOR THE SESSION

SCRIPS	CP AS ON 26/4/2021	CP AS ON 27/4/2021	Change (%)	OI AS ON 26/4/2021	OI AS ON 27/4/2021	Change (%)
SUNTV	466.35	490.4	5.16	153	725	373.86
SRF	6216.45	6452.2	3.79	1299	4327	233.10
DEEPAKNTR	1636.35	1785.5	9.11	1595	5126	221.38
NATIONALUM	57.95	61.05	5.35	1565	4907	213.55
GAIL	130.3	131.7	1.07	1307	3373	158.07

TOP 5 VOLUME LOSER FOR THE SESSION

SCRIPS	CP AS ON 26/4/2021	CP AS ON 27/4/2021	Change (%)	OI AS ON 26/4/2021	OI AS ON 27/4/2021	Change (%)
SAIL	100.4	100	-0.40	9093	432	-95.25
MPHASIS	1724.75	1708.3	-0.95	1864	699	-62.50
HCLTECH	915.45	915.85	0.04	27892	11238	-59.71
GUJGASLTD	547.5	545.2	-0.42	971	402	-58.60
ICICIGI	1451.45	1443.85	-0.52	2569	1338	-47.92

Technical Trend

TOP 10 OPEN INTEREST GAINER FOR THE SESSION

SCRIPS	CP AS ON 26/4/2021	CP AS ON 27/4/2021	Change (%)	OI AS ON 26/4/2021	OI AS ON 27/4/2021	Change (%)
NAVINFLUOR	3203.45	3465.35	8.18	321975	420750	30.68
AXISBANK	700.7	701.55	0.12	41395200	52382400	26.54
BOSCHLTD	13531.15	13602	0.52	99500	122500	23.12
AARTIIND	1493.05	1565.75	4.87	616675	729725	18.33
SRF	6216.45	6452.2	3.79	450625	523875	16.26
DEEPAKNTR	1636.35	1785.5	9.11	1289500	1486500	15.28
GAIL	130.3	131.7	1.07	53112700	60701100	14.29
NATIONALUM	57.95	61.05	5.35	86496000	98498000	13.88
POWERGRID	215.65	217.2	0.72	21752000	24720000	13.64
MPHASIS	1724.75	1708.3	-0.95	489125	550225	12.49

TOP 10 OPEN INTEREST LOSER FOR THE SESSION

SCRIPS	CP AS ON 26/4/2021	CP AS ON 27/4/2021	Change (%)	OI AS ON 26/4/2021	OI AS ON 27/4/2021	Change (%)
ICICIPRULI	543.3	527.65	-2.88	10045500	9262500	-7.79
HDFCBANK	1408.65	1437.7	2.06	28824400	26671150	-7.47
M&MFIN	162.55	165.4	1.75	24112000	22344000	-7.33
IBULHSGFIN	180.35	182.65	1.28	28067400	26033800	-7.25
PNB	34.5	34.95	1.30	243392000	226416000	-6.97
TECHM	965.35	968.6	0.34	13280400	12385200	-6.74
CUB	164.9	164.75	-0.09	6407700	5986100	-6.58
ACC	1842.55	1859.05	0.90	3461500	3234000	-6.57
LICHSGFIN	397.85	402.8	1.24	7372000	6906000	-6.32
SUNTV	466.35	490.4	5.16	13147500	12316500	-6.32

Technical Trend

Pivot Report– Nifty F&O

Symbol	Last Rate	Pivot	Support3	Support2	Support 1	Resist1	Resist2	Resist3
Aarti Industries Ltd.	1562.9	1541.2	1396.9	1437.8	1500.3	1603.7	1644.6	1707.1
ACC Ltd.	1859.8	1854.5	1810.4	1823.4	1841.6	1872.7	1885.7	1903.9
Adani Enterprises Ltd.	1191.2	1195.2	1144.4	1162.7	1176.9	1209.4	1227.7	1241.9
Adani Ports & Special Economic Zone Ltd.	749.2	744.7	701.7	714.5	731.8	762.0	774.8	792.1
Alembic Pharmaceuticals Ltd.	1004.0	1003.9	966.3	978.8	991.4	1016.5	1029.0	1041.6
Alkem Laboratories Ltd.	2769.6	2775.8	2703.9	2729.9	2749.8	2795.7	2821.7	2841.6
Amara Raja Batteries Ltd.	802.6	803.9	789.8	794.9	798.8	807.8	812.9	816.8
Ambuja Cements Ltd.	306.6	305.4	297.8	299.9	303.2	308.7	310.8	314.1
Apollo Hospitals Enterprises Ltd.	3191.1	3184.6	3117.0	3137.4	3164.2	3211.4	3231.8	3258.6
Apollo Tyres Ltd.	205.5	204.3	196.8	198.9	202.2	207.6	209.7	213.0
Ashok Leyland Ltd.	115.6	115.5	109.7	111.6	113.6	117.5	119.4	121.4
Asian Paints Ltd.	2574.4	2562.8	2499.7	2516.9	2545.6	2591.5	2608.7	2637.4
Au Small Finance Bank Ltd.	1085.8	1073.6	991.3	1014.6	1050.2	1109.2	1132.5	1168.1
Aurobindo Pharma Ltd.	972.6	973.4	942.9	953.3	963.0	983.0	993.4	1003.1
Axis Bank Ltd.	699.6	695.9	668.0	676.1	687.8	707.6	715.7	727.4
Bajaj Auto Ltd.	3785.5	3770.2	3671.7	3699.4	3742.5	3813.3	3841.0	3884.1
Bajaj Finance	4865.1	4833.8	4634.5	4690.5	4777.8	4921.1	4977.1	5064.4
Bajaj Finserv Ltd.	10091.3	10063.0	9824.7	9894.7	9993.0	10161.3	10231.3	10329.6
Balkrishna Industries Ltd.	1720.3	1719.8	1679.2	1692.6	1706.4	1733.7	1747.1	1760.9
Bandhan Bank Ltd.	318.9	316.6	304.4	307.7	313.3	322.2	325.5	331.1
BANK NIFTY	32735.3	32565.1	31668.9	31910.9	32323.1	32977.3	33219.3	33631.5
Bank of Baroda	65.3	64.8	62.1	62.8	64.1	66.1	66.8	68.1
Bata India Ltd.	1345.9	1344.4	1317.1	1325.7	1335.8	1354.5	1363.1	1373.2
Berger Paints India Ltd.	712.8	716.0	683.2	695.2	704.0	724.8	736.8	745.6
Bharat Electronics Ltd.	129.2	129.2	126.6	127.5	128.3	130.1	131.0	131.8
Bharat Forge Ltd.	595.6	589.4	554.9	564.3	580.0	605.0	614.4	630.1
Bharat Heavy Electricals Ltd.	48.3	47.7	44.5	45.4	46.8	49.1	50.0	51.4
Bharat Petroleum Corporation Ltd.	420.4	420.0	410.4	413.5	416.9	423.5	426.6	430.0
Bharti Airtel Ltd.	534.3	533.0	515.2	520.7	527.5	539.8	545.3	552.1
Biocon Ltd.	398.1	396.5	387.0	389.6	393.9	400.7	403.3	407.6
Bosch Ltd.	13561.8	13579.1	13157.1	13303.5	13432.7	13708.3	13854.7	13983.9
Britannia Industries Ltd.	3541.2	3544.3	3456.3	3486.7	3513.9	3571.5	3601.9	3629.1
Cadila Healthcare Ltd.	562.8	563.9	536.6	546.1	554.4	572.2	581.7	590.0
Canara Bank	139.7	138.2	130.5	132.6	136.1	141.7	143.8	147.3
Cholamandalam Investment and Finance Company	564.6	561.2	543.2	548.1	556.3	569.4	574.3	582.5
Cipla Ltd.	912.4	911.0	883.9	892.5	902.4	920.9	929.5	939.4
City Union Bank Ltd.	164.6	164.9	160.2	161.9	163.2	166.2	167.9	169.2
Coal India Ltd	127.5	127.3	125.5	126.0	126.8	128.1	128.6	129.4
Coforge Ltd.	2838.1	2830.7	2708.4	2746.7	2792.4	2876.4	2914.7	2960.4
Colgate Palmolive (India) Ltd.	1495.1	1500.2	1464.0	1477.8	1486.4	1508.8	1522.6	1531.2
Container Corporation of India Ltd.	563.4	562.8	525.6	537.8	550.6	575.6	587.8	600.6
Cummins India Ltd.	895.2	887.7	845.7	857.2	876.2	906.7	918.2	937.2
Dabur India Ltd.	538.6	539.2	524.5	529.6	534.1	543.7	548.8	553.3
Deepak Nitrite	1782.6	1742.5	1545.0	1597.5	1690.0	1835.0	1887.5	1980.0
Divi's Laboratories Ltd.	3909.0	3873.3	3682.6	3734.3	3821.6	3960.6	4012.3	4099.6
DLF Ltd.	253.7	251.5	240.1	243.2	248.4	256.8	259.9	265.1
Dr. Lal Pathlabs Ltd.	2816.0	2825.6	2732.7	2766.8	2791.4	2850.2	2884.3	2908.9
Dr. Reddy's Laboratories Ltd.	5057.3	5064.9	4919.1	4970.2	5013.7	5108.4	5159.5	5203.0
Eicher Motors Ltd.	2400.1	2391.3	2335.2	2351.0	2375.5	2415.8	2431.6	2456.1
Escorts Ltd.	1134.0	1133.3	1088.9	1103.5	1118.7	1148.6	1163.2	1178.4
Exide Industries Ltd.	173.1	173.1	169.1	170.4	171.8	174.4	175.7	177.1

Technical Trend

Symbol	Last Rate	Pivot	Support3	Support2	Support 1	Resist1	Resist2	Resist3
Federal Bank Ltd.	75.2	74.8	72.3	73.0	74.1	75.9	76.6	77.7
GAIL (India) Ltd.	131.6	131.5	127.3	128.7	130.1	132.9	134.3	135.7
Glenmark Pharmaceuticals Ltd.	561.0	556.1	527.1	535.2	548.1	569.0	577.1	590.0
GMR Infrastructure Ltd.	23.6	23.5	21.3	22.0	22.8	24.2	24.9	25.7
Godrej Consumer Products Ltd.	702.2	699.4	684.4	688.4	695.3	706.3	710.3	717.2
Godrej Properties Ltd.	1367.1	1370.8	1331.7	1346.0	1356.5	1381.3	1395.6	1406.1
Granules India	327.5	326.4	319.1	321.1	324.3	329.6	331.6	334.8
Grasim Industries Ltd.	1331.2	1326.1	1281.9	1294.9	1313.1	1344.3	1357.3	1375.5
Gujarat Gas Co. Ltd.	543.5	542.2	520.9	527.6	535.5	550.1	556.8	564.7
Havell's India Ltd.	1028.5	1022.5	976.0	989.5	1009.0	1042.0	1055.5	1075.0
HCL Technologies Ltd.	928.9	930.3	906.8	915.1	922.0	937.1	945.4	952.3
HDFC Asset Management Company Ltd.	2865.2	2861.1	2800.1	2819.1	2842.1	2884.1	2903.1	2926.1
HDFC Bank Ltd.	1438.7	1428.5	1377.8	1391.3	1415.0	1452.2	1465.7	1489.4
HDFC Life Insurance Company Ltd.	678.8	691.6	622.2	649.6	664.2	706.2	733.6	748.2
Hero MotoCorp Ltd.	2905.5	2904.9	2802.1	2836.2	2870.8	2939.6	2973.7	3008.3
Hindalco Industries Ltd.	366.3	362.1	334.3	342.2	354.2	374.1	382.0	394.0
Hindustan Petroleum Corporation Ltd.	233.0	233.0	230.1	231.1	232.0	234.0	235.0	235.9
Hindustan Unilever Ltd.	2379.9	2373.1	2326.2	2339.6	2359.7	2393.2	2406.6	2426.7
Housing Development Finance	2518.4	2510.5	2453.6	2469.9	2494.2	2534.7	2551.0	2575.3
I T C Ltd.	205.4	205.8	202.8	203.9	204.7	206.6	207.7	208.5
ICICI Bank Ltd.	598.8	597.3	581.7	586.4	592.6	603.4	608.1	614.3
ICICI Lombard General Insurance Company Ltd.	1439.7	1447.6	1352.5	1386.8	1413.3	1474.1	1508.4	1534.9
ICICI Prudential Life Insurance	526.7	531.3	489.3	504.8	515.8	542.2	557.7	568.7
IDFC First Bank Ltd.	53.4	53.1	51.5	51.9	52.6	53.8	54.2	54.9
Indiabulls Housing Finance	182.0	180.7	172.1	174.6	178.3	184.4	186.9	190.6
Indian Oil Corporation Ltd.	88.9	88.7	87.4	87.8	88.3	89.2	89.6	90.1
Indian Railway Catering & Tourism	1793.2	1770.2	1649.8	1682.2	1737.7	1825.7	1858.1	1913.6
Indraprastha Gas Ltd.	509.7	510.2	496.5	501.3	505.5	514.4	519.2	523.4
Indus Towers Ltd.	251.0	252.6	239.6	244.5	247.7	255.9	260.8	264.0
IndusInd Bank Ltd.	882.5	875.8	838.6	848.8	865.6	892.6	902.8	919.6
Info Edge (India) Ltd.	4950.1	4927.8	4771.7	4816.3	4883.2	4994.7	5039.3	5106.2
Infosys Ltd.	1348.5	1347.2	1328.6	1334.4	1341.4	1354.3	1360.1	1367.1
Interglobe Aviation	1640.5	1618.5	1502.0	1533.5	1587.0	1672.0	1703.5	1757.0
Jindal Steel & Power Ltd.	449.9	447.5	419.7	428.2	439.0	458.4	466.9	477.7
JSW Steel Ltd.	665.9	664.8	646.8	652.4	659.2	671.5	677.1	683.9
Jubilant Foodworks Limited	2951.0	2926.2	2810.3	2840.7	2895.8	2981.3	3011.7	3066.8
Kotak Mahindra Bank Ltd.	1750.3	1745.8	1691.0	1707.8	1729.0	1767.1	1783.9	1805.1
L&T Finance Holdings Ltd.	88.5	88.2	85.3	86.2	87.3	89.3	90.2	91.3
L&T Technology Services	2592.7	2601.7	2529.1	2556.3	2574.5	2619.9	2647.1	2665.3
Larsen & Toubro Infotech	3909.7	3925.2	3821.5	3861.2	3885.5	3949.5	3989.2	4013.5
Larsen & Toubro Ltd.	1380.7	1368.3	1295.7	1315.8	1348.2	1400.8	1420.9	1453.3
LIC Housing Finance Ltd.	402.2	402.1	384.8	390.5	396.3	407.9	413.6	419.4
Lupin Ltd.	1066.6	1063.5	1032.3	1041.7	1054.1	1076.0	1085.4	1097.8
Mahanagar Gas Ltd	1108.0	1107.5	1075.5	1086.0	1097.0	1118.5	1129.0	1140.0
Mahindra & Mahindra Financial	165.0	165.4	159.1	161.4	163.2	167.2	169.5	171.3
Mahindra & Mahindra Ltd.	778.4	781.1	763.3	770.2	774.3	785.2	792.1	796.2
Manappuram Finance Limited	147.3	147.4	143.7	144.9	146.1	148.6	149.8	151.0
Marico Ltd.	407.4	406.6	396.0	399.3	403.3	410.7	414.0	418.0
Maruti Suzuki India Ltd.	6568.8	6606.6	6337.2	6439.6	6504.2	6671.2	6773.6	6838.2
Max Financial Services Ltd.	891.2	889.9	864.4	872.5	881.8	899.3	907.4	916.7

Technical Trend

Symbol	Last Rate	Pivot	Support3	Support2	Support 1	Resist1	Resist2	Resist3
Motherson Sumi Systems Ltd.	215.7	214.7	208.1	210.0	212.8	217.5	219.4	222.2
MphasiS Ltd.	1705.2	1714.7	1638.8	1667.3	1686.2	1733.7	1762.2	1781.1
MRF Ltd.	78010.4	78061.1	76876.4	77288.2	77649.3	78422.2	78834.0	79195.1
Muthoot Finance	1176.3	1178.8	1147.2	1158.6	1167.4	1187.7	1199.1	1207.9
National Aluminium Co. Ltd.	60.9	60.1	54.7	56.2	58.6	62.5	64.0	66.4
Navin Fluorine International Ltd.	3462.1	3375.0	2949.0	3062.0	3262.0	3575.0	3688.0	3888.0
Nestle India Ltd.	16779.0	16819.7	16529.3	16639.7	16709.3	16889.3	16999.7	17069.3
Nippon Life India Asset Management Ltd.	340.7	337.8	317.7	323.5	332.1	346.4	352.2	360.8
NMDC Ltd.	146.5	145.6	138.3	140.5	143.5	148.6	150.8	153.8
NTPC Ltd.	102.1	102.4	99.5	100.6	101.3	103.2	104.3	105.0
Oil & Natural Gas Corporation Ltd.	103.2	103.3	101.5	102.1	102.7	103.9	104.5	105.1
Page Industries	30196.2	30258.7	28637.5	29198.7	29697.5	30757.5	31318.7	31817.5
Petronet LNG Ltd.	239.3	238.9	232.6	234.6	236.9	241.2	243.2	245.5
Pfizer Ltd.	5172.2	5181.9	5021.9	5078.4	5125.3	5228.8	5285.3	5332.2
PI Industries Limited	2609.2	2572.1	2391.4	2439.3	2524.2	2657.1	2705.0	2789.9
Pidilite Industries Ltd.	1833.2	1837.5	1785.2	1804.1	1818.6	1852.1	1871.0	1885.5
Piramal Enterprises	1659.0	1647.0	1566.0	1589.0	1624.0	1682.0	1705.0	1740.0
Power Finance Corporation Ltd.	108.5	107.8	103.7	104.8	106.7	109.6	110.7	112.6
Power Grid Corporation of India Ltd.	216.7	217.7	210.1	213.0	214.8	219.5	222.4	224.2
Punjab National Bank	35.0	34.9	33.5	33.9	34.4	35.4	35.8	36.3
PVR Limited	1189.0	1178.1	1117.3	1133.9	1161.5	1205.6	1222.2	1249.8
RBL Bank	186.6	185.5	179.7	181.3	183.9	188.1	189.7	192.3
REC Ltd.	128.1	127.8	124.6	125.5	126.8	129.1	130.0	131.3
Reliance Industries Ltd.	1988.7	1974.7	1893.3	1915.8	1952.2	2011.2	2033.7	2070.1
S&P CNX NIFTY	14653.0	14601.8	14353.3	14419.1	14536.0	14718.7	14784.5	14901.4
SBI Life Insurance Company Ltd.	928.8	933.5	898.4	911.7	920.2	942.0	955.3	963.8
Shree Cement Ltd.	28098.6	28129.5	27574.1	27769.5	27934.1	28294.1	28489.5	28654.1
Shriram Transport Finance Co. Ltd.	1325.0	1334.0	1271.4	1295.2	1310.1	1348.9	1372.7	1387.6
Siemens Ltd.	1844.0	1830.9	1770.5	1786.3	1815.1	1859.7	1875.5	1904.3
SRF Ltd.	6434.9	6363.1	6020.7	6110.9	6272.9	6525.1	6615.3	6777.3
State Bank of India	353.1	350.1	332.8	337.6	345.3	357.9	362.7	370.4
Steel Authority of India Ltd.	100.2	100.3	96.9	98.1	99.1	101.4	102.6	103.6
Sun Pharmaceutical Industries Ltd.	639.3	637.9	622.9	627.5	633.4	643.8	648.4	654.3
Sun TV Network Ltd.	488.7	482.2	450.0	458.6	473.6	497.2	505.8	520.8
Tata Chemicals Ltd.	759.7	752.7	709.0	721.2	740.5	772.0	784.2	803.5
Tata Consultancy Services Ltd.	3132.0	3123.7	3078.2	3090.6	3111.3	3144.4	3156.8	3177.5
Tata Consumer Products Ltd.	673.7	673.9	656.1	662.1	667.9	679.7	685.7	691.5
Tata Motors Ltd.	301.5	299.7	289.5	292.3	296.9	304.3	307.1	311.7
Tata Power Co. Ltd.	98.0	97.6	94.7	95.6	96.8	98.8	99.7	100.9
Tata Steel Ltd.	977.8	968.4	915.0	929.7	953.7	992.4	1007.1	1031.1
Tech Mahindra Ltd.	969.3	967.0	903.0	923.6	946.4	989.9	1010.5	1033.3
The Ramco Cements Ltd.	959.6	961.8	935.3	944.9	952.2	969.1	978.7	986.0
Titan Company Ltd.	1495.1	1493.6	1462.0	1472.0	1483.6	1505.1	1515.1	1526.7
Torrent Pharmaceuticals Ltd.	2524.8	2518.9	2444.0	2467.0	2495.9	2547.8	2570.8	2599.7
Torrent Power Ltd.	392.9	391.5	381.9	384.7	388.8	395.6	398.4	402.5
Trent Ltd.	784.2	785.1	757.6	767.0	775.6	793.7	803.1	811.7
TVS Motor Company Ltd.	566.3	561.4	526.0	536.1	551.2	576.5	586.6	601.7
UltraTech Cement Ltd.	6326.8	6302.6	6148.3	6191.7	6259.2	6370.1	6413.5	6481.0
United Breweries Ltd.	1164.3	1154.0	1104.3	1117.5	1140.9	1177.4	1190.6	1214.0
United Spirits Ltd.	520.9	522.0	505.3	511.3	516.1	526.8	532.8	537.6
UPL Ltd.	597.5	597.4	573.7	581.6	589.5	605.3	613.2	621.1
Vedanta Ltd	243.4	242.3	234.7	236.9	240.1	245.6	247.8	251.0
Vodafone Idea Ltd.	8.7	8.6	8.2	8.3	8.5	8.8	8.9	9.1
Voltas Ltd.	976.4	966.3	912.3	926.9	951.7	991.0	1005.6	1030.4
Wipro Ltd.	485.1	484.4	475.7	478.4	481.7	487.7	490.4	493.7
Zee Entertainment Enterprises Ltd	188.2	189.3	179.5	183.2	185.7	194.8	195.5	198.0

**Disclaimer Appendix****Analyst s holding in the Stock : Nil****Analyst s Certification:**

We analysts and the authors of this report, hereby certify that all of the views expressed in this research report accurately reflect our personal views about any and all of the subject issuer s or securities. We also certify that no part of our compensation was, is, or will be directly or indirectly related to the specific recommendation s or view s in this report. Analysts aren't registered as research analysts by FINRA and might not be an associated person of the BP Equities Pvt. Ltd. Institutional Equities.

General Disclaimer

This report has been prepared by the research department of BP EQUITIES Pvt. Ltd, is for information purposes only. This report is not construed as an offer to sell or the solicitation of an offer to buy or sell any security in any jurisdiction where such an offer or solicitation would be illegal.

BP EQUITIES Pvt. Ltd have exercised due diligence in checking the correctness and authenticity of the information contained herein, so far as it relates to current and historical information, but do not guarantee its accuracy or completeness. The opinions expressed are our current opinions as of the date appearing in the material and may be subject to change from time to time. Prospective investors are cautioned that any forward looking statement are not predictions and are subject to change without prior notice.

Recipients of this material should rely on their own investigations and take their own professional advice. BP EQUITIES Pvt. Ltd or any of its affiliates or employees shall not be in any way responsible for any loss or damage that may arise to any person from any inadvertent error in the information contained in this report. BP EQUITIES Pvt. Ltd. or any of its affiliates or employees do not provide, at any time, any express or implied warranty of any kind, regarding any matter pertaining to this report, including without limitation the implied warranties of merchantability, fitness for a particular purpose, and non-infringement. The recipients of this report should rely on their own investigations.

BP EQUITIES Pvt. Ltd and/or its affiliates and/or employees may have interests/ positions, financial or otherwise in the securities mentioned in this report. Opinions expressed are our current opinions as of the date appearing on this material only. While we endeavor to update on a reasonable basis the information discussed in this material, there may be regulatory, compliance, or other reasons that prevent us from doing so.

This report is not directed to or intended for display, downloading, printing, reproducing or for distribution to or use by any person in any locality, state and country or other jurisdiction where such distribution, publication or use would be contrary to the law or regulation or would subject to BP EQUITIES Pvt. Ltd or any of its affiliates to any registration or licensing requirement within such jurisdiction.

Corporate Office:

4th floor,
Rustom Bldg,
29, Veer Nariman Road, Fort,
Mumbai-400001
Phone- +91 22 6159 6464
Fax-+91 22 6159 6160
Website- www.bpwealth.com

Registered Office:

24/26, 1st Floor, Cama Building,
Dalal street, Fort,
Mumbai-400001
BP Equities Pvt. Ltd.
CIN No: U67120MH1997PTC107392