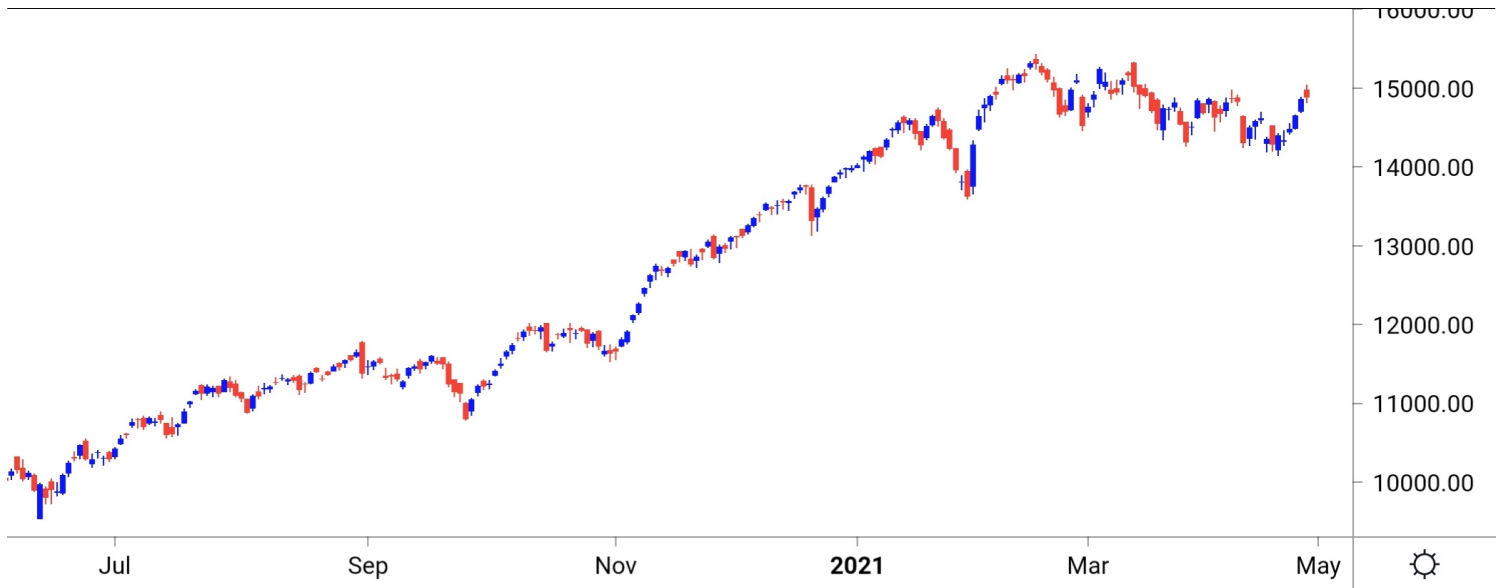


**NIFTY SPOT : IMMEDIATE SUPPORT AT 14750-14700**



Source: Falcon, BP Equities Research

Nifty spot closed 0.20% higher at 14894. Index opened with wide gap up but failed to capitalise its early gains and witnessed selling pressure in first hour of the session. Later on index recovered from the lows and closed the days on a flat note. Going ahead index has an immediate support around 14750-14700-14600. On the higher side resistance is seen at 14830-14900-15000.

Intraday Nifty

Resistance - 14830-14900-15000

Support - 14750-14700-14600

**BANK NIFTY SPOT : IMMEDIATE SUPPORT AT 33400-33200**



Source: Falcon, BP Equities Research

Bank Nifty spot closed 0.02% lower at 33714. Banknifty opened with gap up and remained volatile throughout the day closing session on a flat note. Going ahead Banknifty has an immediate 33400-33200-31900. While on the higher side resistance is placed around 33600-33800-34000.

Intraday Bank Nifty

Resistance - 33600-33800-34000

Support - 33400-33200-31900

## Technical Trend

### INTRADAY TRADER'S PICKS

Sr.No.	STOCK	CLOSE	Target 1	Target 2	Stop Loss	RECOMMENDATION
1	DRREDDY	5102	5170	5220	5070	<b>BUY ABOVE 5120</b>
2	ULTRACEMCO	6382	6460	6520	6340	<b>BUY ABOVE 6400</b>
3	ACC	1877	1905	1925	1865	<b>BUY ABOVE 1885</b>
4	HEROMOROCO	2860	2820	2790	2880	<b>SELL BELOW 2850</b>
5	LT	1358	1335	1320	1365	<b>SELL BELOW 1350</b>

## DERIVATIVES

### INDICES SNAPSHOT

SCRIPS	CP AS ON 28/4/2021	CP AS ON 29/4/2021	Change (%)	OI AS ON 28/4/2021	OI AS ON 29/4/2021	Change (%)
BANKNIFTY	33696.2	33729.6	0.10	2266600	2163000	-4.57
FINNIFTY	16038.95	16061.15	0.14	21800	22800	4.59
NIFTY	14855.3	14901.15	0.31	14981700	15445125	3.09

### Derivative Highlights

- ⇒ Nifty Future closed with a Premium of 2 points v/s a Discount of 18 points in the previous session.
- ⇒ Nifty Future Open Interest Increased by 3.09%. Bank Nifty Future Open Interest Decreased by 4.57%.
- ⇒ Nifty PCR - OI Decreased from 1.49 to 1.03, Nifty Bank PCR - OI Decreased from 1.47 to 1.13.
- ⇒ FII Bought Rs 807.37 crore while DII Sold Rs 942.35 crore in the Cash Segment. FII Sold Rs 648.34 crore in Index Futures, Bought Rs 2480.45 crore in index options, while in Future they Bought Rs 481.24 crore and Bought Rs 1147.35 in stock options.
- ⇒ Among Index Option space, Highest Open Interest concentration was seen in 14500 & 14000 Strike price among the PE options. Where as among CE Options Highest Open Interest Concentration was seen in 15500 & 15000 Strike price.
- ⇒ Highest Open Interest Build Up among the PE options was seen in 13500 & 14000 Strike price. Among CE options highest build up was seen in 16500 & 15500 Strike price.

#### OI Concentration

PUT OPTION		CALL OPTION	
Strike Price	Open Interest	Strike Price	Open Interest
14500	1619475	15500	1884375
14000	1511100	15000	1557300
13500	1352775	16500	1240725
14400	1018725	15200	1219725
14600	972900	15800	1119525

#### Highest Change in OI

PUT OPTION		CALL OPTION	
Strike Price	Change in OI	Strike Price	Change in OI
13500	826425	16500	1208250
14000	742275	15500	1142400
14900	608850	15800	979650
13000	596700	16000	958350
15000	529650	15600	799425

#### MWPL

SCRIPS	OI %	BAN
SUNTV	89%	NO
CANBK	69%	NO
NATIONALUM	68%	NO
SAIL	58%	NO
ADANI PORTS	55%	NO
BHEL	52%	NO
PNB	51%	NO
IDEA	49%	NO
CADILAH C	47%	NO
IBULHSGFIN	46%	NO

# Technical Trend

## Stock Analysis

Long Build-up	Long Unwinding	Short Build-up	Short Covering
BHARATFORG	ALKEM	BHEL	BEL
EXIDEIND	BANKBARODA	BOSCHLTD	BIOCON
HCLTECH	COALINDIA	HINDUNILVR	MPHASIS
HINDALCO	COLPAL	INFY	ONGC
JSWSTEEL	EICHERMOT	L&TFH	SAIL
LUPIN	IGL	PNB	

## STATISTICS

### Highest Premium

SCRIPS	Premium %	Price change %
MFSL	0.72	-0.54
PETRONET	0.68	-0.95
SAIL	0.67	8.70
TATAPOWER	0.67	-0.31
MOTHERSUMI	0.66	-1.02

### Highest Discount

SCRIPS	Premium %	Price change %
UBL	-0.92	-0.82
IDFCFIRSTB	-0.73	0.27
PVR	-0.70	-1.57
INDIGO	-0.50	0.50
BRITANNIA	-0.47	-0.28

### TOP 5 VOLUME GAINER FOR THE SESSION

SCRIPS	CP AS ON 28/4/2021	CP AS ON 29/4/2021	Change (%)	VOL AS ON 28/4/2021	VOL AS ON 29/4/2021	Change (%)
SAIL	103.15	112.55	9.11	356	1104	210.11
ONGC	103.95	104.2	0.24	1333	3091	131.88
IDEA	8.65	8.4	-2.89	2080	4717	126.78
FINNIFTY	16038.95	16061.15	0.14	847	1486	75.44
ALKEM	2770.4	2756.75	-0.49	437	745	70.48

### TOP 5 VOLUME LOSER FOR THE SESSION

SCRIPS	CP AS ON 28/4/2021	CP AS ON 29/4/2021	Change (%)	VOL AS ON 28/4/2021	VOL AS ON 29/4/2021	Change (%)
TVSMOTOR	646.4	635.15	-1.74	11945	1564	-86.91
BRITANNIA	3485.1	3467.4	-0.51	9369	2037	-78.26
SUNTV	504.55	519.35	2.93	7663	2099	-72.61
PIDILITIND	1879	1851.85	-1.44	2110	603	-71.42
GMRINFRA	23.05	22.7	-1.52	5260	1567	-70.21

## Technical Trend

### TOP 10 OPEN INTEREST GAINER FOR THE SESSION

SCRIPS	CP AS ON 28/4/2021	CP AS ON 29/4/2021	Change (%)	OI AS ON 28/4/2021	OI AS ON 29/4/2021	Change (%)
AUBANK	1147	1124.5	-1.96	4297500	4976500	15.80
HINDALCO	362.55	372.05	2.62	37246600	42509800	14.13
SIEMENS	1869.85	1880.7	0.58	899250	1017500	13.15
BAJAJFINSV	10502.95	11171.55	6.37	870375	980625	12.67
EXIDEIND	176.95	177.35	0.23	14464800	15948000	10.25
DEEPAKNTR	1785.05	1785.25	0.01	1495500	1639000	9.60
SUNTV	504.55	519.35	2.93	12985500	14229000	9.58
HINDUNILVR	2409.35	2409.1	-0.01	7627800	8317500	9.04
VEDL	243.85	255.05	4.59	89825600	97662400	8.72
RAMCOCEM	978.3	986.45	0.83	1826650	1979650	8.38

### TOP 10 OPEN INTEREST LOSER FOR THE SESSION

SCRIPS	CP AS ON 28/4/2021	CP AS ON 29/4/2021	Change (%)	OI AS ON 28/4/2021	OI AS ON 29/4/2021	Change (%)
MPHASIS	1746.9	1768.25	1.22	511550	411775	-19.50
NAM-INDIA	341.9	342.2	0.09	2219200	1870400	-15.72
CHOLAFIN	584.65	590.85	1.06	5692500	4840000	-14.98
ALKEM	2770.4	2756.75	-0.49	298000	257200	-13.69
COFORGE	2862.55	2852.45	-0.35	619875	542250	-12.52
PVR	1204.25	1189.75	-1.20	2931214	2566542	-12.44
IDEA	8.65	8.4	-2.89	810390000	714560000	-11.83
CUMMINSIND	882.1	859.7	-2.54	1524000	1346400	-11.65
BATAINDIA	1348.35	1349.45	0.08	1704450	1507000	-11.58
IDFCFIRSTB	54.7	54.85	0.27	194389000	173755000	-10.61

# Technical Trend

## Pivot Report– Nifty F&O

Symbol	Last Rate	Pivot	Support3	Support2	Support 1	Resist1	Resist2	Resist3
Aarti Industries Ltd.	1557.0	1551.2	1469.1	1494.6	1525.8	1582.4	1607.9	1639.1
ACC Ltd.	1877.1	1873.0	1827.3	1841.2	1859.1	1890.9	1904.8	1922.7
Adani Enterprises Ltd.	1182.3	1191.0	1134.7	1156.3	1169.3	1204.0	1225.6	1238.6
Adani Ports & Special Economic Zone Ltd.	746.8	752.0	715.7	729.6	738.2	760.6	774.5	783.1
Alembic Pharmaceuticals Ltd.	982.1	983.6	954.7	964.8	973.5	992.3	1002.4	1011.1
Alkem Laboratories Ltd.	2761.7	2774.5	2648.8	2694.9	2728.3	2807.9	2854.0	2887.4
Amara Raja Batteries Ltd.	802.2	809.7	768.5	784.7	793.5	818.5	834.7	843.5
Ambuja Cements Ltd.	314.1	312.1	301.5	304.4	309.2	317.0	319.9	324.7
Apollo Hospitals Enterprises Ltd.	3238.9	3232.7	3144.7	3172.0	3205.4	3266.2	3293.5	3326.9
Apollo Tyres Ltd.	208.1	210.4	194.7	200.7	204.4	214.1	220.1	223.8
Ashok Leyland Ltd.	115.1	116.4	108.7	111.7	113.4	118.1	121.1	122.8
Asian Paints Ltd.	2613.5	2608.5	2503.0	2536.5	2575.0	2647.0	2680.5	2719.0
Au Small Finance Bank Ltd.	1124.5	1137.2	1045.3	1080.2	1102.3	1159.3	1194.2	1216.3
Aurobindo Pharma Ltd.	967.2	972.8	929.6	945.8	956.5	983.5	999.7	1010.4
Axis Bank Ltd.	719.4	717.8	688.7	697.9	708.6	728.5	737.7	748.4
Bajaj Auto Ltd.	3836.5	3866.0	3630.4	3718.8	3777.6	3924.8	4013.2	4072.0
Bajaj Finance	5484.9	5446.6	5173.2	5251.6	5368.2	5563.2	5641.6	5758.2
Bajaj Finserv Ltd.	11176.5	10998.8	9917.7	10218.8	10697.7	11477.7	11778.8	12257.7
Balkrishna Industries Ltd.	1766.9	1765.9	1699.0	1721.0	1743.9	1788.8	1810.8	1833.7
Bandhan Bank Ltd.	332.1	330.1	317.2	320.8	326.5	335.8	339.4	345.1
BANK NIFTY	33714.5	33768.7	32268.0	32786.3	33250.4	34232.8	34751.1	35215.2
Bank of Baroda	66.9	67.7	62.5	64.5	65.7	68.9	70.9	72.1
Bata India Ltd.	1350.5	1350.6	1315.7	1327.4	1338.9	1362.2	1373.9	1385.4
Berger Paints India Ltd.	714.7	718.0	694.4	703.4	709.0	723.6	732.6	738.2
Bharat Electronics Ltd.	129.9	130.1	126.8	128.0	128.9	131.0	132.2	133.1
Bharat Forge Ltd.	604.7	601.4	562.8	574.6	589.6	616.4	628.2	643.2
Bharat Heavy Electricals Ltd.	47.2	47.8	44.4	45.7	46.5	48.6	49.9	50.7
Bharat Petroleum Corporation Ltd.	419.6	419.9	410.7	413.9	416.7	422.7	425.9	428.7
Bharti Airtel Ltd.	540.9	543.3	525.7	532.4	536.6	547.5	554.2	558.4
Biocon Ltd.	393.9	394.0	369.5	377.7	385.8	402.1	410.3	418.4
Bosch Ltd.	13571.5	13684.0	12948.1	13230.9	13401.2	13854.3	14137.1	14307.4
Britannia Industries Ltd.	3468.9	3473.9	3383.1	3415.0	3442.0	3500.9	3532.8	3559.8
Cadila Healthcare Ltd.	561.5	563.3	545.3	551.9	556.7	568.1	574.7	579.5
Canara Bank	139.5	140.8	130.0	134.0	136.8	143.6	147.6	150.4
Cholamandalam Investment and Finance Company	592.5	589.0	559.3	568.0	580.3	601.3	610.0	622.3
Cipla Ltd.	906.5	909.3	887.8	895.9	901.2	914.6	922.7	928.0
City Union Bank Ltd.	168.7	169.5	163.5	165.8	167.2	170.9	173.2	174.6
Coal India Ltd	128.1	128.6	124.7	126.2	127.1	129.5	131.0	131.9
Coforge Ltd.	2844.7	2868.9	2706.6	2768.8	2806.7	2906.8	2969.0	3006.9
Colgate Palmolive (India) Ltd.	1485.8	1489.9	1455.1	1468.1	1476.9	1498.7	1511.7	1520.5
Container Corporation of India Ltd.	557.3	561.3	534.7	544.9	551.1	567.5	577.7	583.9
Cummins India Ltd.	858.0	868.5	806.9	831.0	844.5	882.0	906.1	919.6
Dabur India Ltd.	541.9	543.1	532.2	536.2	539.1	545.9	549.9	552.8
Deepak Nitrite	1787.3	1796.7	1713.0	1744.0	1765.6	1818.3	1849.3	1870.9
Divi's Laboratories Ltd.	3910.9	3904.7	3770.9	3813.5	3862.2	3953.4	3996.0	4044.7
DLF Ltd.	249.3	250.5	239.5	243.6	246.4	253.3	257.4	260.2
Dr. Lal Pathlabs Ltd.	2926.5	2909.0	2783.6	2819.6	2873.0	2962.4	2998.4	3051.8
Dr. Reddy's Laboratories Ltd.	5102.3	5096.2	4946.7	4994.5	5048.4	5150.1	5197.9	5251.8
Eicher Motors Ltd.	2462.9	2487.7	2333.8	2393.3	2428.1	2522.5	2582.0	2616.8
Escorts Ltd.	1130.4	1139.8	1082.6	1104.8	1117.6	1152.6	1174.8	1187.6
Exide Industries Ltd.	178.2	178.8	170.9	173.8	176.0	181.0	183.9	186.1

# Technical Trend

Symbol	Last Rate	Pivot	Support3	Support2	Support 1	Resist1	Resist2	Resist3
Federal Bank Ltd.	77.6	77.8	73.6	75.1	76.3	79.0	80.5	81.7
GAIL (India) Ltd.	134.8	134.8	130.2	131.7	133.3	136.4	137.9	139.5
Glenmark Pharmaceuticals Ltd.	566.4	568.7	538.6	549.4	557.9	577.2	588.0	596.5
GMR Infrastructure Ltd.	22.9	22.9	21.8	22.2	22.5	23.2	23.6	23.9
Godrej Consumer Products Ltd.	702.1	708.8	671.5	686.2	694.1	716.7	731.4	739.3
Godrej Properties Ltd.	1379.8	1378.3	1320.7	1339.4	1359.6	1398.5	1417.2	1437.4
Granules India	331.5	333.3	320.5	325.3	328.4	336.4	341.2	344.3
Grasim Industries Ltd.	1350.7	1350.8	1295.0	1313.6	1332.2	1369.4	1388.0	1406.6
Gujarat Gas Co. Ltd.	529.4	534.5	505.9	517.2	523.3	540.6	551.9	558.0
Havell's India Ltd.	1009.4	1016.7	969.4	987.6	998.5	1027.6	1045.8	1056.7
HCL Technologies Ltd.	909.6	915.5	878.6	892.9	901.2	923.8	938.1	946.4
HDFC Asset Management Company Ltd.	2792.2	2809.1	2688.5	2734.3	2763.3	2838.1	2883.9	2912.9
HDFC Bank Ltd.	1472.5	1479.1	1411.8	1436.4	1454.5	1497.1	1521.7	1539.8
HDFC Life Insurance Company Ltd.	674.7	676.1	661.6	666.9	670.8	680.0	685.3	689.2
Hero MotoCorp Ltd.	2860.1	2891.3	2705.1	2777.6	2818.8	2932.6	3005.1	3046.3
Hindalco Industries Ltd.	372.2	371.4	352.7	358.7	365.4	378.1	384.1	390.8
Hindustan Petroleum Corporation Ltd.	229.7	230.7	224.3	226.8	228.2	232.2	234.7	236.1
Hindustan Unilever Ltd.	2407.6	2413.6	2313.4	2348.8	2378.2	2443.0	2478.4	2507.8
Housing Development Finance	2538.9	2566.6	2410.2	2471.6	2505.2	2600.2	2661.6	2695.2
I T C Ltd.	204.3	205.3	199.6	201.8	203.1	206.6	208.8	210.1
ICICI Bank Ltd.	621.5	619.6	591.4	600.2	610.8	630.3	639.1	649.7
ICICI Lombard General Insurance Company Ltd.	1417.9	1425.7	1370.8	1391.7	1404.8	1438.8	1459.7	1472.8
ICICI Prudential Life Insurance	524.5	526.1	509.0	515.3	519.9	530.7	537.0	541.6
IDFC First Bank Ltd.	54.8	54.8	52.2	53.0	53.9	55.7	56.5	57.4
Indiabulls Housing Finance	182.1	184.4	170.3	175.8	178.9	187.5	193.0	196.1
Indian Oil Corporation Ltd.	88.9	89.4	86.4	87.6	88.2	90.0	91.2	91.8
Indian Railway Catering & Tourism	1792.6	1792.0	1713.2	1739.3	1765.9	1818.6	1844.7	1871.3
Indraprastha Gas Ltd.	505.3	507.8	489.6	496.5	500.9	512.2	519.1	523.5
Indus Towers Ltd.	252.4	255.0	237.1	243.9	248.2	259.2	266.0	270.3
IndusInd Bank Ltd.	939.5	938.5	876.3	896.7	918.1	959.8	980.2	1001.6
Info Edge (India) Ltd.	5009.0	4996.4	4807.7	4866.4	4937.7	5067.7	5126.4	5197.7
Infosys Ltd.	1356.4	1358.9	1331.2	1341.3	1348.8	1366.4	1376.5	1384.0
Interglobe Aviation	1655.9	1652.7	1615.6	1626.9	1641.4	1667.2	1678.5	1693.0
Jindal Steel & Power Ltd.	454.3	451.9	427.7	435.0	444.6	461.6	468.9	478.5
JSW Steel Ltd.	726.5	707.8	625.9	647.0	686.7	747.6	768.7	808.4
Jubilant Foodworks Limited	2938.2	2949.8	2799.0	2853.2	2895.7	2992.3	3046.5	3089.0
Kotak Mahindra Bank Ltd.	1805.0	1810.3	1710.3	1745.4	1775.2	1840.1	1875.2	1905.0
L&T Finance Holdings Ltd.	89.9	90.9	84.0	86.6	88.3	92.5	95.1	96.8
L&T Technology Services	2628.2	2634.7	2550.4	2580.7	2604.4	2658.4	2688.7	2712.4
Larsen & Toubro Infotech	3851.0	3873.9	3696.3	3763.1	3807.1	3917.9	3984.7	4028.7
Larsen & Toubro Ltd.	1358.7	1367.2	1308.9	1331.2	1344.9	1381.0	1403.3	1417.0
LIC Housing Finance Ltd.	411.5	414.2	394.6	402.0	406.8	418.9	426.3	431.1
Lupin Ltd.	1055.5	1056.5	1032.5	1040.8	1048.2	1063.9	1072.2	1079.6
Mahanagar Gas Ltd	1097.6	1104.1	1062.4	1078.5	1088.0	1113.7	1129.8	1139.3
Mahindra & Mahindra Financial	165.3	166.8	158.0	161.5	163.4	168.7	172.2	174.1
Mahindra & Mahindra Ltd.	774.6	778.4	741.3	755.0	764.8	788.2	801.9	811.7
Manappuram Finance Limited	147.2	148.1	140.8	143.5	145.4	149.9	152.6	154.5
Marico Ltd.	409.9	410.6	399.8	403.7	406.8	413.7	417.6	420.7
Maruti Suzuki India Ltd.	6565.7	6588.4	6433.8	6492.9	6529.3	6624.7	6683.8	6720.2
Max Financial Services Ltd.	914.6	918.7	891.8	902.1	908.3	924.9	935.2	941.4

# Technical Trend

Symbol	Last Rate	Pivot	Support3	Support2	Support 1	Resist1	Resist2	Resist3
Motherson Sumi Systems Ltd.	219.4	220.7	211.4	214.9	217.2	223.0	226.5	228.8
MphasiS Ltd.	1770.0	1764.6	1725.0	1736.4	1753.2	1781.4	1792.8	1809.6
MRF Ltd.	77656.9	78087.3	75479.6	76492.3	77074.6	78669.6	79682.3	80264.6
Muthoot Finance	1166.3	1174.0	1122.8	1142.5	1154.4	1185.9	1205.6	1217.5
National Aluminium Co. Ltd.	64.8	63.7	58.5	59.9	62.3	66.1	67.5	69.9
Navin Fluorine International Ltd.	3391.6	3392.5	3221.1	3278.5	3335.1	3449.1	3506.5	3563.1
Nestle India Ltd.	16502.6	16565.7	16182.3	16331.1	16416.9	16651.5	16800.3	16886.1
Nippon Life India Asset Management Ltd.	342.7	342.3	325.9	331.3	337.0	348.0	353.4	359.1
NMDC Ltd.	154.0	152.3	143.6	145.9	150.0	156.3	158.6	162.7
NTPC Ltd.	103.1	103.6	99.8	101.2	102.1	104.5	105.9	106.8
Oil & Natural Gas Corporation Ltd.	104.1	104.5	100.8	102.2	103.1	105.5	106.9	107.8
Page Industries	29890.7	30032.1	28903.2	29326.6	29608.7	30314.2	30737.6	31019.7
Petronet LNG Ltd.	234.9	236.3	227.9	231.2	233.0	238.2	241.5	243.3
Pfizer Ltd.	5308.2	5249.5	4929.9	5016.9	5162.5	5395.1	5482.1	5627.7
PI Industries Limited	2572.9	2574.6	2484.4	2515.0	2544.0	2603.5	2634.1	2663.1
Pidilite Industries Ltd.	1848.2	1863.8	1776.7	1810.9	1829.6	1882.5	1916.7	1935.4
Piramal Enterprises	1692.5	1705.3	1618.6	1651.8	1672.1	1725.6	1758.8	1779.1
Power Finance Corporation Ltd.	107.2	108.2	102.2	104.6	105.9	109.5	111.9	113.2
Power Grid Corporation of India Ltd.	220.2	221.0	213.7	216.4	218.3	222.9	225.6	227.5
Punjab National Bank	35.1	35.4	33.3	34.1	34.6	35.9	36.7	37.2
PVR Limited	1188.9	1196.3	1138.6	1160.3	1174.6	1210.6	1232.3	1246.6
RBL Bank	190.3	191.8	179.0	183.7	187.0	195.1	199.8	203.1
REC Ltd.	127.9	129.4	120.3	123.9	125.9	131.4	135.0	137.0
Reliance Industries Ltd.	2024.1	2025.3	1968.9	1988.1	2006.1	2043.3	2062.5	2080.5
S&P CNX NIFTY	14894.9	14917.9	14561.7	14688.1	14791.5	15021.3	15147.7	15251.1
SBI Life Insurance Company Ltd.	928.2	928.2	907.6	914.5	921.3	935.0	941.9	948.7
Shree Cement Ltd.	28444.3	28581.2	27311.9	27780.6	28112.5	28913.1	29381.8	29713.7
Shriram Transport Finance Co. Ltd.	1416.3	1413.6	1348.2	1369.1	1392.7	1437.2	1458.1	1481.7
Siemens Ltd.	1877.5	1888.8	1812.6	1841.8	1859.6	1906.6	1935.8	1953.6
SRF Ltd.	6440.2	6460.5	6234.7	6316.7	6378.5	6522.2	6604.2	6666.0
State Bank of India	359.4	361.6	338.8	347.2	353.3	367.7	376.1	382.2
Steel Authority of India Ltd.	112.5	110.3	98.3	101.5	107.0	115.8	119.0	124.5
Sun Pharmaceutical Industries Ltd.	644.5	645.9	628.8	635.0	639.7	650.6	656.8	661.5
Sun TV Network Ltd.	519.5	513.2	474.7	485.4	502.4	530.2	540.9	557.9
Tata Chemicals Ltd.	763.3	766.9	740.4	750.5	756.9	773.3	783.4	789.8
Tata Consultancy Services Ltd.	3115.3	3126.0	3042.9	3074.2	3094.7	3146.6	3177.9	3198.4
Tata Consumer Products Ltd.	671.9	672.8	650.6	658.3	665.1	679.5	687.2	694.0
Tata Motors Ltd.	301.9	304.4	290.0	295.6	298.8	307.5	313.1	316.3
Tata Power Co. Ltd.	97.7	98.4	93.9	95.7	96.7	99.4	101.2	102.2
Tata Steel Ltd.	1031.4	1017.1	943.3	963.2	997.3	1051.2	1071.1	1105.2
Tech Mahindra Ltd.	976.9	977.5	955.5	963.0	970.0	984.4	991.9	998.9
The Ramco Cements Ltd.	989.7	984.9	938.4	952.3	971.0	1003.5	1017.4	1036.1
Titan Company Ltd.	1506.8	1510.4	1462.9	1479.9	1493.4	1523.9	1540.9	1554.4
Torrent Pharmaceuticals Ltd.	2500.5	2503.6	2413.1	2444.3	2472.4	2531.7	2562.9	2591.0
Torrent Power Ltd.	394.7	395.3	372.9	380.6	387.6	402.3	410.0	417.0
Trent Ltd.	775.9	777.8	746.2	757.4	766.6	787.0	798.2	807.4
TVS Motor Company Ltd.	633.8	639.0	604.5	617.8	625.8	647.0	660.3	668.3
UltraTech Cement Ltd.	6382.5	6383.4	6192.6	6256.5	6319.5	6446.4	6510.3	6573.3
United Breweries Ltd.	1196.7	1199.6	1141.2	1161.6	1179.2	1217.1	1237.5	1255.1
United Spirits Ltd.	525.3	530.1	500.1	511.7	518.5	536.8	548.4	555.2
UPL Ltd.	615.8	615.5	598.9	604.3	610.1	621.3	626.7	632.5
Vedanta Ltd	255.1	251.4	232.2	237.4	246.2	260.2	265.4	274.2
Vodafone Idea Ltd.	8.4	8.5	7.9	8.1	8.3	8.7	8.9	9.1
Voltas Ltd.	967.1	973.5	932.1	948.1	957.6	983.0	999.0	1008.5
Wipro Ltd.	489.9	489.5	479.0	482.4	486.1	493.2	496.6	500.3
Zee Entertainment Enterprises Ltd.	186.6	188.1	178.8	182.4	184.5	190.1	193.7	195.8



**Disclaimer Appendix****Analyst s holding in the Stock : Nil****Analyst s Certification:**

We analysts and the authors of this report, hereby certify that all of the views expressed in this research report accurately reflect our personal views about any and all of the subject issuer s or securities. We also certify that no part of our compensation was, is, or will be directly or indirectly related to the specific recommendation s or view s in this report. Analysts aren't registered as research analysts by FINRA and might not be an associated person of the BP Equities Pvt. Ltd. Institutional Equities.

**General Disclaimer**

This report has been prepared by the research department of BP EQUITIES Pvt. Ltd, is for information purposes only. This report is not construed as an offer to sell or the solicitation of an offer to buy or sell any security in any jurisdiction where such an offer or solicitation would be illegal.

BP EQUITIES Pvt. Ltd have exercised due diligence in checking the correctness and authenticity of the information contained herein, so far as it relates to current and historical information, but do not guarantee its accuracy or completeness. The opinions expressed are our current opinions as of the date appearing in the material and may be subject to change from time to time. Prospective investors are cautioned that any forward looking statement are not predictions and are subject to change without prior notice.

Recipients of this material should rely on their own investigations and take their own professional advice. BP EQUITIES Pvt. Ltd or any of its affiliates or employees shall not be in any way responsible for any loss or damage that may arise to any person from any inadvertent error in the information contained in this report. BP EQUITIES Pvt. Ltd. or any of its affiliates or employees do not provide, at any time, any express or implied warranty of any kind, regarding any matter pertaining to this report, including without limitation the implied warranties of merchantability, fitness for a particular purpose, and non-infringement. The recipients of this report should rely on their own investigations.

BP EQUITIES Pvt. Ltd and/or its affiliates and/or employees may have interests/ positions, financial or otherwise in the securities mentioned in this report. Opinions expressed are our current opinions as of the date appearing on this material only. While we endeavor to update on a reasonable basis the information discussed in this material, there may be regulatory, compliance, or other reasons that prevent us from doing so.

This report is not directed to or intended for display, downloading, printing, reproducing or for distribution to or use by any person in any locality, state and country or other jurisdiction where such distribution, publication or use would be contrary to the law or regulation or would subject to BP EQUITIES Pvt. Ltd or any of its affiliates to any registration or licensing requirement within such jurisdiction.

**Corporate Office:**

4th floor,  
Rustom Bldg,  
29, Veer Nariman Road, Fort,  
Mumbai-400001  
Phone- +91 22 6159 6464  
Fax-+91 22 6159 6160  
Website- [www.bpwealth.com](http://www.bpwealth.com)

**Registered Office:**

24/26, 1st Floor, Cama Building,  
Dalal street, Fort,  
Mumbai-400001

BP Equities Pvt. Ltd.

CIN No: U67120MH1997PTC107392