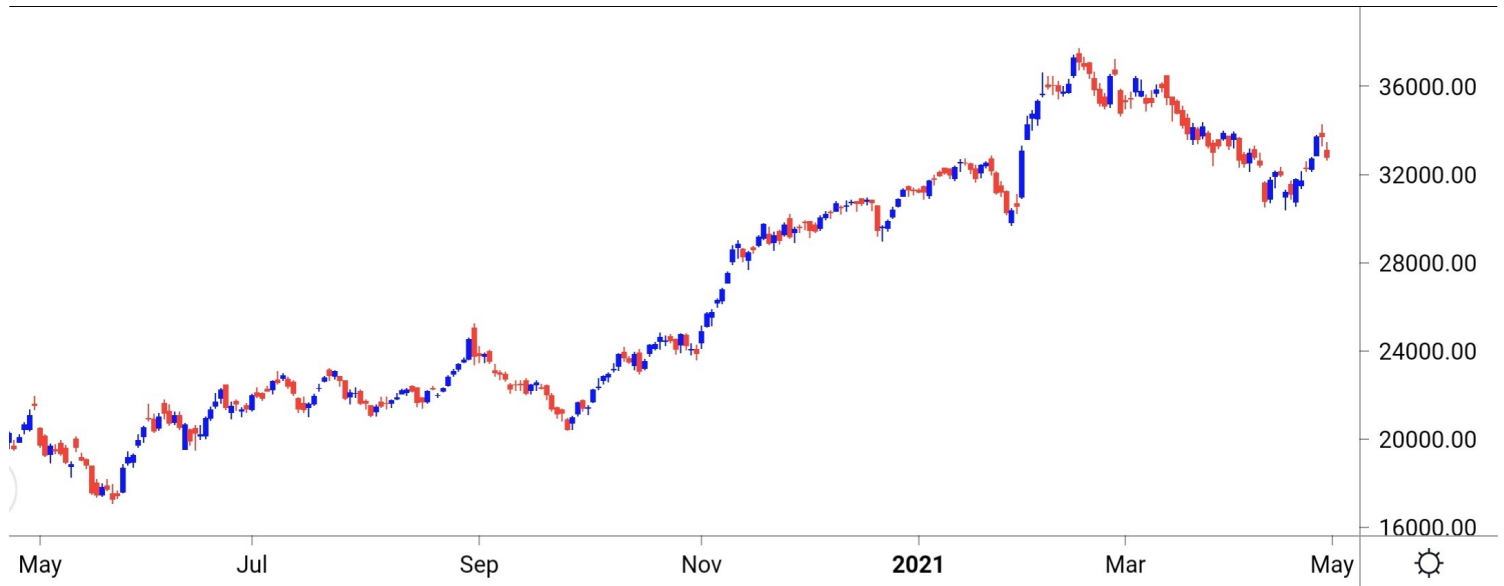


**NIFTY SPOT : IMMEDIATE SUPPORT AT 14480-14400**



Source: Falcon, BP Equities Research

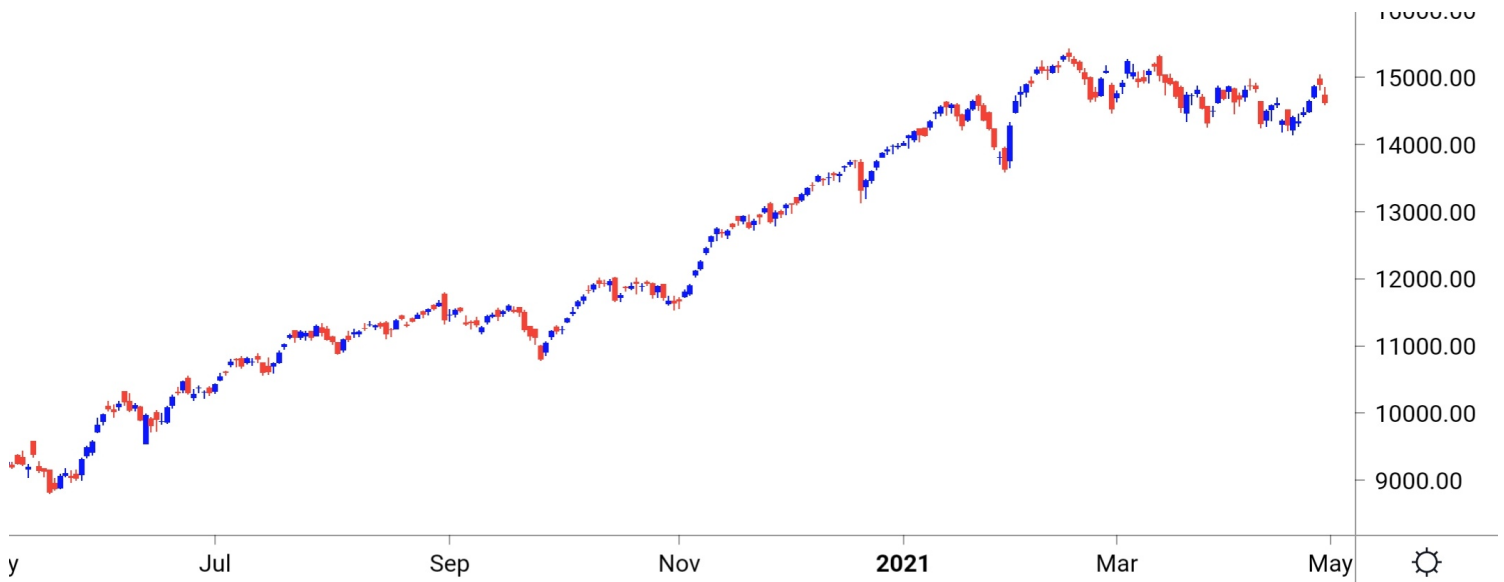
Nifty spot closed 1.77% lower at 14631. Index opened with wide gap down and remained under pressure throughout the day closing session near days low with decent loss. Following SGX Nifty, index is expected to open lower by 170-190 points. Post gap down opening immediate support comes around 14480-14400-14330. While on the opposite side resistance is visible around 14580-14650-14750.

Intraday Nifty

Resistance - 14580-14650-14750

Support - 14480-14400-14330

**BANK NIFTY SPOT : IMMEDIATE SUPPORT AT 32400-32200**



Source: Falcon, BP Equities Research

Bank Nifty spot closed 2.77% lower at 32781. Banknifty opened with gap down and continue to witness selling pressure throughout the day closing session near days low. Post gap down opening Banknifty is expected to find support near 32400-32200-31900. While on the higher side immediate resistance is placed at 32700-32900-33300.

Intraday Bank Nifty

Resistance - 32700-32900-33300

Support - 32400-32200-31900

## Technical Trend

### INTRADAY TRADER'S PICKS

Sr.No.	STOCK	CLOSE	Target 1	Target 2	Stop Loss	RECOMMENDATION
1	DRREDDY	5163	5225	5275	5125	<b>BUY ABOVE 5175</b>
2	ACC	1882	1910	1930	1870	<b>BUY ABOVE 1890</b>
3	BAJFINANCE	5451	5520	5570	5420	<b>BUY ABOVE 5470</b>
4	MARUTI	6455	6380	6320	6500	<b>SELL BELOW 6440</b>
5	INFY	1354	1335	1320	1365	<b>SELL BELOW 1350</b>

## DERIVATIVES

### INDICES SNAPSHOT

SCRIPS	CP AS ON 29/4/2021	CP AS ON 30/4/2021	Change (%)	OI AS ON 29/4/2021	OI AS ON 30/4/2021	Change (%)
BANKNIFTY	33729.6	32893.55	-2.48	2163000	1356675	-37.28
FINNIFTY	16061.15	15644.15	-2.60	22800	20560	-9.82
NIFTY	14901.15	14690.8	-1.41	15445125	10856375	-29.71

### Derivative Highlights

- ⇒ Nifty Future closed with a Premium of 29 points v/s a Premium of 2 points in the previous session.
- ⇒ Nifty Future Open Interest Decreased by 29.71%. Bank Nifty Future Open Interest Decreased by 37.28%.
- ⇒ Nifty PCR - OI Decreased from 1.03 to 0.68, Nifty Bank PCR - OI Decreased from 1.13 to 0.74.
- ⇒ FII Sold Rs 3465.07 crore while DII Bought Rs 1419.31 crore in the Cash Segment. FII Sold Rs 2963.21 crore in Index Futures, Bought Rs 4861.29 crore in index options, while in Future they Bought Rs 660.97 crore and Sold Rs 522.44 in stock options.
- ⇒ Among Index Option space, Highest Open Interest concentration was seen in 14000 & 14500 Strike price among the PE options. Where as among CE Options Highest Open Interest Concentration was seen in 16000 & 15500 Strike price.
- ⇒ Highest Open Interest Build Up among the PE options was seen in 14000 & 13900 Strike price. Among CE options highest build up was seen in 16000 & 15000 Strike price.

#### OI Concentration

PUT OPTION		CALL OPTION	
Strike Price	Open Interest	Strike Price	Open Interest
14000	2503725	16000	3507750
14500	1851825	15500	3031425
14600	1440750	15000	3030225
14200	1271625	15600	2454000
14700	1119825	14900	2115150

#### Highest Change in OI

PUT OPTION		CALL OPTION	
Strike Price	Change in OI	Strike Price	Change in OI
14000	992625	16000	2388450
13900	537900	15000	1472925
13300	510825	14800	1448025
14200	490275	15600	1373400
14600	467850	15500	1147050

#### MWPL

SCRIPS	OI %	BAN
SUNTV	121%	YES
SAIL	77%	NO
NATIONALUM	72%	NO
CANBK	72%	NO
ADANI PORTS	57%	NO
BHEL	56%	NO
PNB	53%	NO
CADILAHC	52%	NO
IDEA	51%	NO
TATACHEM	50%	NO

# Technical Trend

## Stock Analysis

Long Build-up	Long Unwinding	Short Build-up	Short Covering
HINDPETRO	ADANI PORTS	ESCORTS	AARTIIND
SUNTV	BAJFINANCE		APOLLOTYRE
	BIOCON		BHEL
	DLF		DRREDDY
	HDFC		IGL
	INDIGO		LTTS

## STATISTICS

### Highest Premium

SCRIPS	Premium %	Price change %
TRENT	0.82	0.11
GRANULES	0.72	0.66
ESCORTS	0.70	-1.04
DEEPAKNTR	0.69	4.38
ADANI PORTS	0.69	-2.24

### Highest Discount

SCRIPS	Premium %	Price change %
IDFCFIRSTB	-0.82	-0.18
RBLBANK	-0.46	-2.39
BRITANNIA	-0.37	-0.57
INDIGO	-0.33	-0.75
LALPATHLAB	-0.23	0.21

### TOP 5 VOLUME GAINER FOR THE SESSION

SCRIPS	CP AS ON 29/4/2021	CP AS ON 30/4/2021	Change (%)	VOL AS ON 29/4/2021	VOL AS ON 30/4/2021	Change (%)
MARICO	410.4	413.45	0.74	477	5916	1140.25
SAIL	112.55	120.3	6.89	1104	13578	1129.89
APOLLOTYRE	207.85	217.6	4.69	1033	10851	950.44
SRTRANSFIN	1417.9	1350.35	-4.76	1457	9988	585.52
TATACHEM	762.5	796.8	4.50	2295	15348	568.76

### TOP 5 VOLUME LOSER FOR THE SESSION

SCRIPS	CP AS ON 29/4/2021	CP AS ON 30/4/2021	Change (%)	VOL AS ON 29/4/2021	VOL AS ON 30/4/2021	Change (%)
IDEA	8.4	8.4	0.00	4717	874	-81.47
NAM-INDIA	342.2	342.95	0.22	723	251	-65.28
FINNIFTY	16061.15	15644.15	-2.60	1486	589	-60.36
CUB	168.1	167.25	-0.51	676	269	-60.21
EICHERMOT	2461.65	2433.4	-1.15	4378	2061	-52.92

## Technical Trend

### TOP 10 OPEN INTEREST GAINER FOR THE SESSION

SCRIPS	CP AS ON 29/4/2021	CP AS ON 30/4/2021	Change (%)	OI AS ON 29/4/2021	OI AS ON 30/4/2021	Change (%)
SUNTV	519.35	546.85	5.30	14229000	15130500	6.34
ESCORTS	1129.55	1126.45	-0.27	3065700	3236200	5.56
HINDPETRO	229.95	235.45	2.39	24143400	24694200	2.28
APLLTD	980.6	992.2	1.18	1172050	1180300	0.70

### TOP 10 OPEN INTEREST LOSER FOR THE SESSION

SCRIPS	CP AS ON 29/4/2021	CP AS ON 30/4/2021	Change (%)	OI AS ON 29/4/2021	OI AS ON 30/4/2021	Change (%)
TATACONSUM	671.75	670.75	-0.15	18669150	6930900	-62.88
GAIL	134.7	138	2.45	70400100	31896900	-54.69
NAUKRI	4999.7	4942.75	-1.14	1613250	982375	-39.11
MPHASIS	1768.25	1767.95	-0.02	411775	251550	-38.91
BANKNIFTY	33729.6	32893.55	-2.48	2163000	1356675	-37.28
AUBANK	1124.5	1005.75	-10.56	4976500	3183000	-36.04
PVR	1189.75	1136.15	-4.51	2566542	1724459	-32.81
INDUSTOWER	252.5	253.8	0.51	12373200	8478400	-31.48
MINDTREE	2097.3	2115.55	0.87	2200800	1509200	-31.42
RECLTD	128.1	128.9	0.62	22770000	15702000	-31.04

# Technical Trend

## Pivot Report– Nifty F&O

Symbol	Last Rate	Pivot	Support3	Support2	Support 1	Resist1	Resist2	Resist3
Aarti Industries Ltd.	1604.9	1593.4	1427.7	1479.1	1542.0	1656.2	1707.6	1770.5
ACC Ltd.	1882.8	1880.4	1809.0	1832.0	1857.4	1905.8	1928.8	1954.2
Adani Enterprises Ltd.	1158.7	1167.6	1076.2	1109.6	1134.2	1192.1	1225.5	1250.1
Adani Ports & Special Economic Zone Ltd.	730.1	738.0	681.6	703.1	716.6	751.5	773.0	786.5
Alembic Pharmaceuticals Ltd.	985.7	985.2	955.6	965.3	975.5	995.4	1005.1	1015.3
Alkem Laboratories Ltd.	2759.1	2753.1	2642.5	2677.4	2718.2	2793.9	2828.8	2869.6
Amara Raja Batteries Ltd.	810.8	807.1	780.0	787.8	799.3	818.6	826.4	837.9
Ambuja Cements Ltd.	309.1	311.9	290.8	298.8	303.9	317.0	325.0	330.1
Apollo Hospitals Enterprises Ltd.	3197.5	3230.1	3023.0	3102.9	3150.2	3277.4	3357.3	3404.6
Apollo Tyres Ltd.	216.4	214.3	184.4	193.7	205.0	225.6	234.9	246.2
Ashok Leyland Ltd.	112.7	113.5	107.6	109.9	111.3	114.9	117.2	118.6
Asian Paints Ltd.	2536.4	2555.4	2423.3	2473.7	2505.0	2586.8	2637.2	2668.5
Au Small Finance Bank Ltd.	1004.3	1027.8	882.6	938.8	971.6	1060.5	1116.7	1149.5
Aurobindo Pharma Ltd.	980.9	978.0	941.9	953.0	966.9	991.9	1003.0	1016.9
Axis Bank Ltd.	714.9	716.6	678.5	691.7	703.3	728.2	741.4	753.0
Bajaj Auto Ltd.	3833.8	3866.7	3600.7	3700.4	3767.1	3933.4	4033.1	4099.8
Bajaj Finance	5451.9	5434.8	5147.9	5237.8	5344.9	5541.8	5631.7	5738.8
Bajaj Finserv Ltd.	11041.7	11045.1	10509.0	10688.8	10865.3	11221.6	11401.4	11577.9
Balkrishna Industries Ltd.	1770.0	1771.7	1666.4	1702.1	1736.0	1805.7	1841.4	1875.3
Bandhan Bank Ltd.	329.8	331.5	307.7	316.2	323.0	338.2	346.7	353.5
BANK NIFTY	32781.8	32966.8	31686.6	32175.0	32478.4	33270.2	33758.6	34062.0
Bank of Baroda	66.8	66.7	61.7	63.4	65.1	68.4	70.1	71.8
Bata India Ltd.	1369.6	1362.3	1294.8	1314.9	1342.2	1389.7	1409.8	1437.1
Berger Paints India Ltd.	704.0	707.1	681.0	690.7	697.4	713.7	723.4	730.1
Bharat Electronics Ltd.	131.8	132.0	118.9	123.4	127.6	136.2	140.7	144.9
Bharat Forge Ltd.	610.4	608.9	571.0	583.1	596.8	622.5	634.6	648.3
Bharat Heavy Electricals Ltd.	48.3	48.0	43.3	44.8	46.5	49.7	51.2	52.9
Bharat Petroleum Corporation Ltd.	421.8	424.7	389.0	401.8	411.8	434.7	447.5	457.5
Bharti Airtel Ltd.	536.8	539.1	517.7	525.6	531.2	544.7	552.6	558.2
Biocon Ltd.	379.7	383.2	361.0	369.6	374.6	388.2	396.8	401.8
Bosch Ltd.	13509.0	13533.0	13266.0	13363.0	13436.0	13606.0	13703.0	13776.0
Britannia Industries Ltd.	3449.0	3451.5	3403.2	3420.1	3434.6	3465.9	3482.8	3497.3
Cadila Healthcare Ltd.	571.2	569.4	539.1	548.6	559.9	580.6	590.1	601.4
Canara Bank	138.8	139.7	128.1	132.3	135.5	142.9	147.1	150.3
Cholamandalam Investment and Finance Company	571.8	579.2	521.5	543.2	557.5	593.5	615.2	629.5
Cipla Ltd.	910.4	910.7	880.2	890.5	900.4	920.7	931.0	940.9
City Union Bank Ltd.	166.8	167.2	161.2	163.4	165.1	168.9	171.1	172.8
Coal India Ltd	133.1	131.6	120.9	124.0	128.5	136.1	139.2	143.7
Coforge Ltd.	2869.1	2869.8	2720.7	2770.7	2819.9	2919.0	2969.0	3018.2
Colgate Palmolive (India) Ltd.	1481.9	1481.0	1443.9	1456.0	1468.9	1493.9	1506.0	1518.9
Container Corporation of India Ltd.	589.9	582.1	505.4	528.4	559.1	612.8	635.8	666.5
Cummins India Ltd.	837.6	844.1	799.0	816.2	826.9	854.8	872.0	882.7
Dabur India Ltd.	538.1	539.7	524.5	530.1	534.1	543.6	549.2	553.2
Deepak Nitrite	1865.6	1844.5	1656.9	1712.4	1789.0	1921.1	1976.6	2053.2
Divi's Laboratories Ltd.	4062.4	4035.7	3710.9	3810.3	3936.3	4161.7	4261.1	4387.1
DLF Ltd.	247.3	248.3	230.8	237.0	242.1	253.5	259.7	264.8
Dr. Lal Pathlabs Ltd.	2932.7	2945.9	2841.8	2880.9	2906.8	2971.8	3010.9	3036.8
Dr. Reddy's Laboratories Ltd.	5163.1	5166.4	5036.0	5080.6	5121.8	5207.7	5252.3	5293.5
Eicher Motors Ltd.	2421.7	2435.3	2344.1	2379.1	2400.4	2456.6	2491.6	2512.9
Escorts Ltd.	1118.6	1128.9	1054.7	1082.9	1100.7	1146.7	1174.9	1192.7
Exide Industries Ltd.	178.0	179.2	169.7	173.3	175.6	181.5	185.1	187.4

# Technical Trend

Symbol	Last Rate	Pivot	Support3	Support2	Support 1	Resist1	Resist2	Resist3
Federal Bank Ltd.	80.1	79.8	70.0	73.1	76.6	83.3	86.4	89.9
GAIL (India) Ltd.	137.2	137.0	123.4	127.8	132.5	141.7	146.1	150.8
Glenmark Pharmaceuticals Ltd.	576.8	575.4	548.4	557.0	566.9	585.3	593.9	603.8
GMR Infrastructure Ltd.	23.0	22.8	22.1	22.3	22.6	23.2	23.4	23.7
Godrej Consumer Products Ltd.	691.8	696.7	659.3	673.4	682.6	705.9	720.0	729.2
Godrej Properties Ltd.	1368.4	1373.4	1316.7	1337.3	1352.8	1388.9	1409.5	1425.0
Granules India	333.7	334.5	319.3	324.6	329.2	339.1	344.4	349.0
Grasim Industries Ltd.	1401.8	1380.7	1279.6	1306.3	1354.0	1428.4	1455.1	1502.8
Gujarat Gas Co. Ltd.	531.0	530.0	500.4	509.9	520.4	540.5	550.0	560.5
Havell's India Ltd.	990.3	1002.7	916.7	949.5	969.9	1023.1	1055.9	1076.3
HCL Technologies Ltd.	899.0	903.1	871.6	883.5	891.2	910.8	922.7	930.4
HDFC Asset Management Company Ltd.	2776.4	2786.1	2679.3	2718.2	2747.3	2815.2	2854.1	2883.2
HDFC Bank Ltd.	1412.3	1424.5	1349.0	1378.2	1395.3	1441.6	1470.8	1487.9
HDFC Life Insurance Company Ltd.	665.1	667.9	640.6	650.6	657.9	675.2	685.2	692.5
Hero MotoCorp Ltd.	2819.2	2828.1	2741.1	2773.1	2796.1	2851.1	2883.1	2906.1
Hindalco Industries Ltd.	364.4	367.6	342.4	351.9	358.1	373.8	383.3	389.5
Hindustan Petroleum Corporation Ltd.	234.7	236.0	209.8	219.0	226.8	243.9	253.1	260.9
Hindustan Unilever Ltd.	2353.8	2375.6	2195.7	2263.0	2308.4	2421.0	2488.3	2533.7
Housing Development Finance	2420.1	2452.1	2265.2	2338.2	2379.1	2493.0	2566.0	2606.9
I T C Ltd.	202.6	203.4	197.5	199.7	201.2	204.9	207.1	208.6
ICICI Bank Ltd.	600.5	605.0	575.4	586.7	593.6	611.9	623.2	630.1
ICICI Lombard General Insurance Company Ltd.	1414.0	1412.7	1377.2	1388.6	1401.3	1425.4	1436.8	1449.5
ICICI Prudential Life Insurance	522.0	524.5	497.2	507.2	514.6	531.9	541.9	549.3
IDFC First Bank Ltd.	54.7	54.6	51.7	52.7	53.7	55.6	56.6	57.6
Indiabulls Housing Finance	181.1	181.5	167.8	172.5	176.8	185.8	190.5	194.8
Indian Oil Corporation Ltd.	90.9	90.7	83.1	85.6	88.2	93.3	95.8	98.4
Indian Railway Catering & Tourism	1791.4	1786.1	1711.7	1734.7	1763.1	1814.5	1837.5	1865.9
Indraprastha Gas Ltd.	509.0	509.8	471.2	484.4	496.7	522.1	535.3	547.6
Indus Towers Ltd.	252.5	253.5	241.7	246.0	249.2	256.8	261.1	264.3
IndusInd Bank Ltd.	935.0	932.9	883.8	899.5	917.2	950.6	966.3	984.0
Info Edge (India) Ltd.	4914.7	4941.5	4661.3	4763.7	4839.2	5017.0	5119.4	5194.9
Infosys Ltd.	1354.4	1358.1	1314.2	1330.1	1342.2	1370.2	1386.1	1398.2
Interglobe Aviation	1643.4	1651.7	1575.9	1603.9	1623.7	1671.5	1699.5	1719.3
Jindal Steel & Power Ltd.	441.5	443.3	407.2	419.8	430.7	454.1	466.7	477.6
JSW Steel Ltd.	717.9	723.1	677.7	694.6	706.2	734.8	751.7	763.3
Jubilant Foodworks Limited	2891.7	2912.8	2777.1	2829.3	2860.5	2944.0	2996.2	3027.4
Kotak Mahindra Bank Ltd.	1748.8	1763.4	1662.3	1700.9	1724.8	1787.4	1826.0	1849.9
L&T Finance Holdings Ltd.	87.1	87.7	82.9	84.7	85.9	88.8	90.6	91.8
L&T Technology Services	2728.9	2700.4	2473.1	2539.4	2634.1	2795.2	2861.5	2956.2
Larsen & Toubro Infotech	3890.3	3883.7	3738.9	3785.0	3837.6	3936.3	3982.4	4035.0
Larsen & Toubro Ltd.	1340.5	1347.2	1300.5	1318.3	1329.4	1358.3	1376.1	1387.2
LIC Housing Finance Ltd.	405.7	409.1	387.0	395.5	400.6	414.2	422.7	427.8
Lupin Ltd.	1069.5	1065.8	1010.8	1027.9	1048.7	1086.6	1103.7	1124.5
Mahanagar Gas Ltd	1125.4	1118.9	1037.9	1062.8	1094.1	1150.2	1175.1	1206.4
Mahindra & Mahindra Financial	161.9	161.7	151.1	154.6	158.2	165.3	168.8	172.4
Mahindra & Mahindra Ltd.	752.6	760.5	714.6	732.5	742.5	770.5	788.4	798.4
Manappuram Finance Limited	149.1	149.3	136.4	140.8	144.9	153.4	157.8	161.9
Marico Ltd.	411.5	411.8	380.9	391.3	401.4	421.9	432.3	442.4
Maruti Suzuki India Ltd.	6455.7	6478.8	6259.3	6340.2	6397.9	6536.5	6617.4	6675.1
Max Financial Services Ltd.	895.9	902.0	854.8	872.5	884.2	913.7	931.4	943.1

# Technical Trend

Symbol	Last Rate	Pivot	Support3	Support2	Support 1	Resist1	Resist2	Resist3
Motherson Sumi Systems Ltd.	214.7	216.9	204.1	209.1	211.9	219.7	224.7	227.5
MphasiS Ltd.	1764.8	1768.4	1722.1	1738.7	1751.8	1781.4	1798.0	1811.1
MRF Ltd.	80720.5	79873.2	73548.3	75374.2	78047.3	82546.3	84372.2	87045.3
Muthoot Finance	1157.4	1165.1	1107.3	1129.1	1143.3	1179.3	1201.1	1215.3
National Aluminium Co. Ltd.	64.7	64.9	60.4	62.0	63.3	66.2	67.8	69.1
Navin Fluorine International Ltd.	3428.2	3435.3	3134.4	3237.1	3332.6	3530.9	3633.6	3729.1
Nestle India Ltd.	16309.2	16377.8	15872.2	16063.6	16186.4	16500.6	16692.0	16814.8
Nippon Life India Asset Management Ltd.	341.7	342.0	331.6	335.2	338.4	345.2	348.8	352.0
NMDC Ltd.	155.8	155.7	146.8	149.8	152.8	158.7	161.7	164.7
NTPC Ltd.	102.5	103.4	97.5	99.8	101.1	104.7	107.0	108.3
Oil & Natural Gas Corporation Ltd.	108.2	108.1	94.0	98.7	103.4	112.8	117.5	122.2
Page Industries	29660.6	29701.7	28923.1	29196.3	29428.5	29933.9	30207.1	30439.3
Petronet LNG Ltd.	240.0	239.3	225.4	229.8	234.9	244.3	248.7	253.8
Pfizer Ltd.	5273.5	5317.2	5047.9	5152.2	5212.9	5377.9	5482.2	5542.9
PI Industries Limited	2511.7	2535.8	2377.1	2438.1	2474.9	2572.6	2633.6	2670.4
Pidilite Industries Ltd.	1815.8	1826.0	1743.9	1774.7	1795.2	1846.5	1877.3	1897.8
Piramal Enterprises	1680.2	1685.6	1605.6	1634.1	1657.1	1708.6	1737.1	1760.1
Power Finance Corporation Ltd.	108.4	108.2	100.8	103.2	105.8	110.8	113.2	115.8
Power Grid Corporation of India Ltd.	220.1	219.7	211.4	214.0	217.0	222.7	225.3	228.3
Punjab National Bank	34.9	35.0	33.1	33.8	34.3	35.5	36.2	36.7
PVR Limited	1136.4	1150.5	1060.9	1095.5	1115.9	1170.9	1205.5	1225.9
RBL Bank	185.8	187.3	176.4	180.6	183.2	189.9	194.1	196.7
REC Ltd.	128.1	128.4	120.9	123.5	125.8	130.7	133.3	135.6
Reliance Industries Ltd.	1994.5	2006.0	1927.6	1957.6	1976.0	2024.5	2054.5	2072.9
S&P CNX NIFTY	14631.1	14696.1	14282.9	14442.3	14536.7	14790.5	14949.9	15044.3
SBI Life Insurance Company Ltd.	928.7	929.7	898.1	909.0	918.8	939.5	950.4	960.2
Shree Cement Ltd.	27910.5	28050.3	27044.3	27426.2	27868.4	28292.5	28674.4	28916.6
Shriram Transport Finance Co. Ltd.	1345.1	1375.3	1196.3	1266.0	1305.5	1414.8	1484.5	1524.0
Siemens Ltd.	1881.5	1887.3	1817.8	1842.9	1862.2	1906.5	1931.6	1950.9
SRF Ltd.	6431.1	6469.2	6144.7	6265.5	6348.3	6552.0	6672.8	6755.6
State Bank of India	353.5	355.5	336.4	343.4	348.5	360.5	367.5	372.6
Steel Authority of India Ltd.	119.5	116.7	100.0	104.6	112.1	124.2	128.8	136.3
Sun Pharmaceutical Industries Ltd.	654.5	653.7	614.3	627.2	640.8	667.3	680.2	693.8
Sun TV Network Ltd.	543.4	537.9	496.5	508.5	525.9	555.4	567.4	584.8
Tata Chemicals Ltd.	792.5	779.9	716.2	733.3	762.9	809.5	826.6	856.2
Tata Consultancy Services Ltd.	3035.7	3062.6	2881.0	2950.5	2993.1	3105.1	3174.6	3217.2
Tata Consumer Products Ltd.	669.5	670.9	650.8	657.9	663.7	676.7	683.8	689.6
Tata Motors Ltd.	293.9	295.9	281.8	287.2	290.5	299.3	304.7	308.0
Tata Power Co. Ltd.	98.9	98.8	91.1	93.7	96.3	101.4	104.0	106.6
Tata Steel Ltd.	1034.0	1032.6	971.0	991.1	1012.5	1054.0	1074.1	1095.5
Tech Mahindra Ltd.	960.4	964.2	930.1	942.7	951.6	973.1	985.7	994.6
The Ramco Cements Ltd.	985.5	981.6	911.9	933.8	959.7	1007.5	1029.4	1055.3
Titan Company Ltd.	1491.7	1493.1	1424.0	1447.5	1469.6	1515.1	1538.6	1560.7
Torrent Pharmaceuticals Ltd.	2509.3	2511.7	2414.7	2447.8	2478.5	2542.4	2575.5	2606.2
Torrent Power Ltd.	396.3	393.4	372.4	378.4	387.4	402.3	408.3	417.3
Trent Ltd.	776.7	776.1	731.8	746.4	761.5	791.3	805.9	821.0
TVS Motor Company Ltd.	630.9	631.0	604.0	613.0	622.0	639.9	648.9	657.9
UltraTech Cement Ltd.	6279.0	6312.2	6009.9	6121.7	6200.3	6390.8	6502.6	6581.2
United Breweries Ltd.	1211.9	1211.2	1149.2	1169.6	1190.8	1232.3	1252.7	1273.9
United Spirits Ltd.	519.6	522.6	496.7	506.4	513.0	529.2	538.9	545.5
UPL Ltd.	606.9	610.7	583.4	593.7	600.3	617.3	627.6	634.2
Vedanta Ltd	257.3	258.7	237.5	245.0	251.1	264.8	272.3	278.4
Vodafone Idea Ltd.	8.4	8.4	7.9	8.1	8.2	8.5	8.7	8.8
Voltas Ltd.	957.2	963.3	926.0	940.5	948.8	971.7	986.2	994.5
Wipro Ltd.	492.8	498.0	461.6	475.5	484.1	506.6	520.5	529.1
Zee Entertainment Enterprises Ltd.	185.6	186.7	175.2	179.4	182.5	189.8	194.0	197.1



**Disclaimer Appendix****Analyst s holding in the Stock : Nil****Analyst s Certification:**

We analysts and the authors of this report, hereby certify that all of the views expressed in this research report accurately reflect our personal views about any and all of the subject issuer s or securities. We also certify that no part of our compensation was, is, or will be directly or indirectly related to the specific recommendation s or view s in this report. Analysts aren't registered as research analysts by FINRA and might not be an associated person of the BP Equities Pvt. Ltd. Institutional Equities.

**General Disclaimer**

This report has been prepared by the research department of BP EQUITIES Pvt. Ltd, is for information purposes only. This report is not construed as an offer to sell or the solicitation of an offer to buy or sell any security in any jurisdiction where such an offer or solicitation would be illegal.

BP EQUITIES Pvt. Ltd have exercised due diligence in checking the correctness and authenticity of the information contained herein, so far as it relates to current and historical information, but do not guarantee its accuracy or completeness. The opinions expressed are our current opinions as of the date appearing in the material and may be subject to change from time to time. Prospective investors are cautioned that any forward looking statement are not predictions and are subject to change without prior notice.

Recipients of this material should rely on their own investigations and take their own professional advice. BP EQUITIES Pvt. Ltd or any of its affiliates or employees shall not be in any way responsible for any loss or damage that may arise to any person from any inadvertent error in the information contained in this report. BP EQUITIES Pvt. Ltd. or any of its affiliates or employees do not provide, at any time, any express or implied warranty of any kind, regarding any matter pertaining to this report, including without limitation the implied warranties of merchantability, fitness for a particular purpose, and non-infringement. The recipients of this report should rely on their own investigations.

BP EQUITIES Pvt. Ltd and/or its affiliates and/or employees may have interests/ positions, financial or otherwise in the securities mentioned in this report. Opinions expressed are our current opinions as of the date appearing on this material only. While we endeavor to update on a reasonable basis the information discussed in this material, there may be regulatory, compliance, or other reasons that prevent us from doing so.

This report is not directed to or intended for display, downloading, printing, reproducing or for distribution to or use by any person in any locality, state and country or other jurisdiction where such distribution, publication or use would be contrary to the law or regulation or would subject to BP EQUITIES Pvt. Ltd or any of its affiliates to any registration or licensing requirement within such jurisdiction.

**Corporate Office:**

4th floor,  
Rustom Bldg,  
29, Veer Nariman Road, Fort,  
Mumbai-400001  
Phone- +91 22 6159 6464  
Fax-+91 22 6159 6160  
Website- [www.bpwealth.com](http://www.bpwealth.com)

**Registered Office:**

24/26, 1st Floor, Cama Building,  
Dalal street, Fort,  
Mumbai-400001  
BP Equities Pvt. Ltd.  
CIN No: U67120MH1997PTC107392