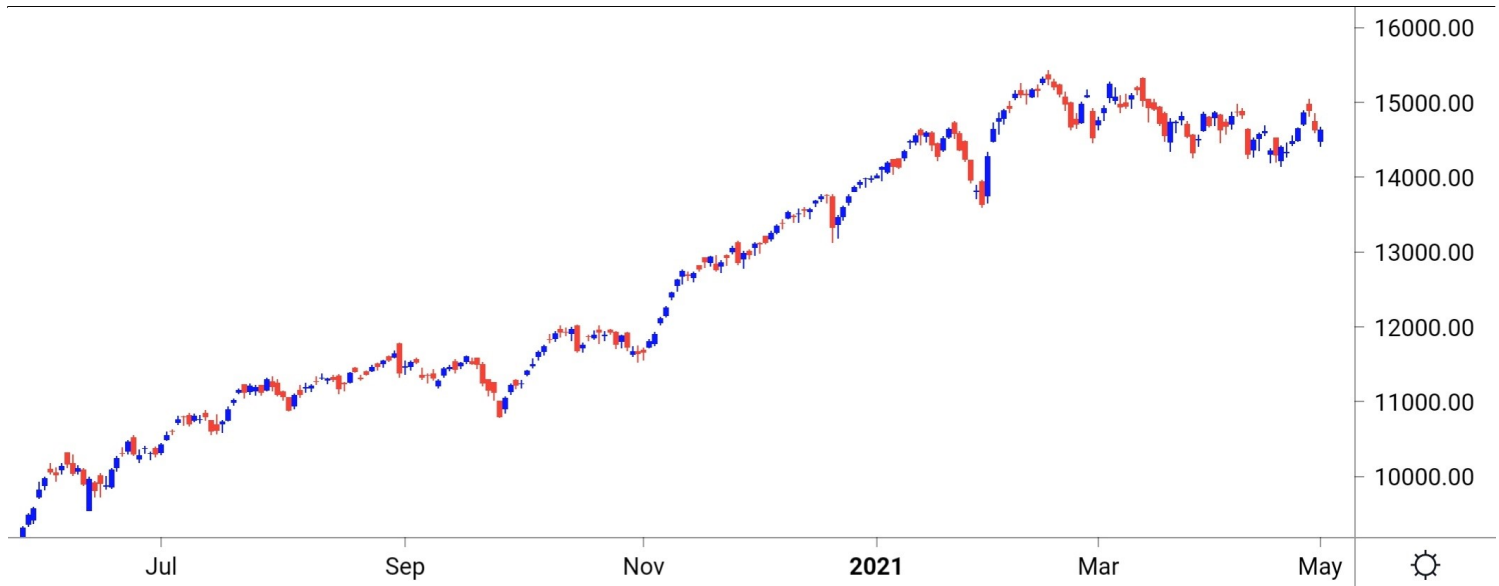


**NIFTY SPOT : IMMEDIATE SUPPORT AT 14570-14500**



Source: Falcon, BP Equities Research

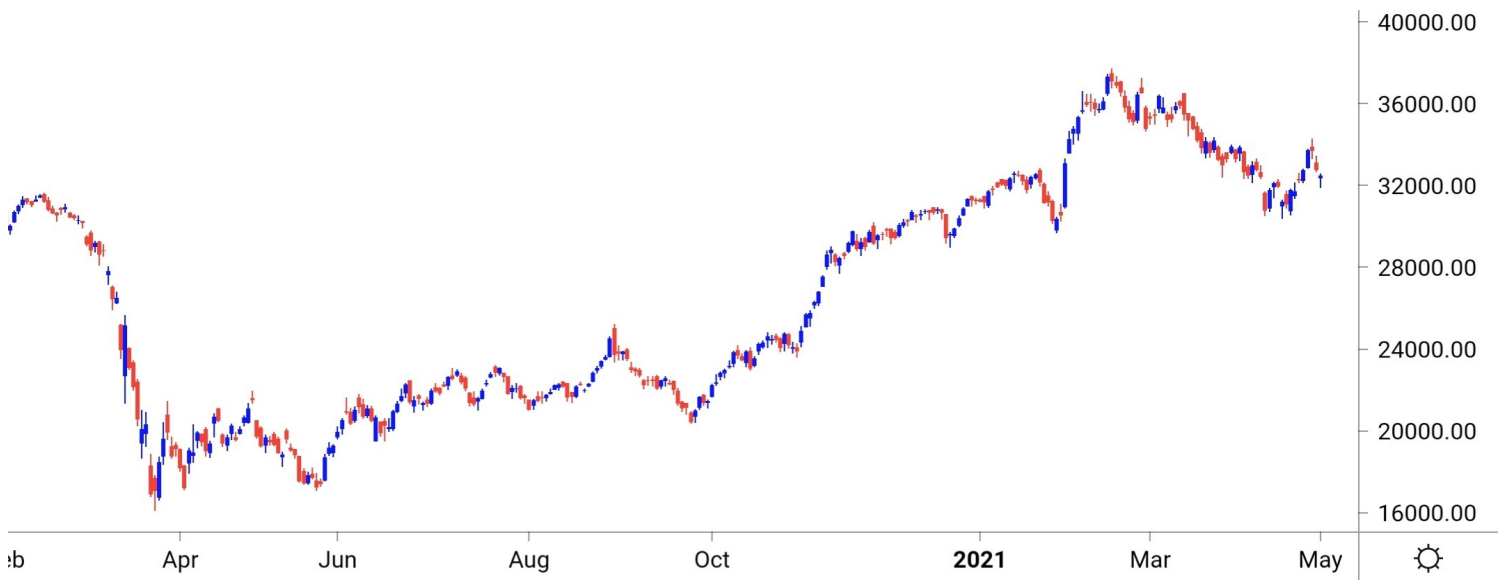
Nifty spot closed 0.02% higher at 14634. Index opened with wide gap down but recovered smartly from the lows to close the session on a flat note. Going forward index has an immediate resistance around 14700, sustenance above the same will open the way for 14800-14880. While on the downside support comes at 14570-14500-14400.

Intraday Nifty

Resistance - 14700-14800-14880

Support - 14570-14500-14400

**BANK NIFTY SPOT : IMMEDIATE SUPPORT AT 32200-32000**



Source: Falcon, BP Equities Research

Bank Nifty spot closed 0.96% lower at 32465. Banknifty opened gap down and remained volatile throughout the day closing session near opening price with minor loss. Going ahead Banknifty has an immediate resistance around 32650, sustenance above the same will open the way for 32800-33100. On the opposite side the support is placed around 32200-32000-31700.

Intraday Bank Nifty

Resistance - 32650-32800-33100

Support - 32200-32000-31700

## Technical Trend

### INTRADAY TRADER'S PICKS

Sr.No.	STOCK	CLOSE	Target 1	Target 2	Stop Loss	RECOMMENDATION
1	HDFCBANK	1414	1433	1450	1400	<b>BUY ABOVE 1418</b>
2	DRREDDY	5185	5250	5300	5150	<b>BUY ABOVE 5200</b>
3	BAJFINANCE	5551	5610	5660	5510	<b>BUY ABOVE 5560</b>
4	HEROMOTOCO	2793	2750	2720	2810	<b>SELL BELOW 2780</b>
5	INFY	1352	1330	1315	1360	<b>SELL BELOW 1345</b>



# Technical Trend

## Stock Analysis

Long Build-up	Long Unwinding	Short Build-up	Short Covering
ADANI PORTS	TVSMOTOR	AMARAJABAT	ADANI ENT
ASIANPAINT		APLLTD	COLPAL
BHARTIARTL		BANDHANBNK	CUB
GRANULES		GODREJPROP	MARUTI
HDFCBANK		ICICIBANK	MPHASIS
ICICIGI		KOTAKBANK	PEL

## STATISTICS

### Highest Premium

SCRIPS	Premium %	Price change %
IDEA	1.18	1.20
SBILIFE	0.92	3.22
BHEL	0.84	10.77
FEDERALBNK	0.81	-0.31
CADILAHC	0.76	1.69

### Highest Discount

SCRIPS	Premium %	Price change %
INDIGO	-0.36	1.39
UBL	-0.31	-0.15
RBLBANK	-0.14	-2.45
IDFCFIRSTB	-0.09	-1.28
GODREJPROP	-0.09	-4.29

### TOP 5 VOLUME GAINER FOR THE SESSION

SCRIPS	CP AS ON 30/4/2021	CP AS ON 3/5/2021	Change (%)	VOL AS ON 30/4/2021	VOL AS ON 3/5/2021	Change (%)
SBILIFE	934.45	967.4	3.53	1999	11554	477.99
ICICIPRULI	524.8	553.8	5.53	1228	4532	269.06
GODREJPROP	1365.65	1308.45	-4.19	669	2177	225.41
ADANI ENT	1164.8	1263.35	8.46	5895	17318	193.77
BHARTIARTL	539.35	561.2	4.05	6527	15716	140.78

### TOP 5 VOLUME LOSER FOR THE SESSION

SCRIPS	CP AS ON 30/4/2021	CP AS ON 3/5/2021	Change (%)	VOL AS ON 30/4/2021	VOL AS ON 3/5/2021	Change (%)
SUNTV	546.85	508.15	-7.08	11142	1191	-89.31
MRF	81170.05	80248.65	-1.14	3896	1081	-72.25
HINDPETRO	235.45	237.35	0.81	7396	2352	-68.20
WIPRO	493.85	488.75	-1.03	20206	7220	-64.27
BIOCON	381.55	381	-0.14	6483	2465	-61.98

## Technical Trend

### TOP 10 OPEN INTEREST GAINER FOR THE SESSION

SCRIPS	CP AS ON 30/4/2021	CP AS ON 3/5/2021	Change (%)	OI AS ON 30/4/2021	OI AS ON 3/5/2021	Change (%)
SBILIFE	934.45	967.4	3.53	4428000	5917500	33.64
MARICO	413.45	447.45	8.22	7816000	9428000	20.62
BHEL	48.55	53.95	11.12	95917500	114156000	19.01
AUBANK	1005.75	929.15	-7.62	3183000	3762000	18.19
BANKNIFTY	32893.55	32655.85	-0.72	1356675	1580650	16.51
ALKEM	2773.6	2781.55	0.29	226400	255400	12.81
RBLBANK	184.9	180.95	-2.14	23374000	26033300	11.38
TITAN	1496.45	1432.85	-4.25	5224500	5776500	10.57
BANDHANBNK	331.4	320.2	-3.38	15472800	17024400	10.03
LTTS	2735.5	2812.5	2.81	478000	523200	9.46

### TOP 10 OPEN INTEREST LOSER FOR THE SESSION

SCRIPS	CP AS ON 30/4/2021	CP AS ON 3/5/2021	Change (%)	OI AS ON 30/4/2021	OI AS ON 3/5/2021	Change (%)
SUNTV	546.85	508.15	-7.08	15130500	13333500	-11.88
VOLTAS	959.8	963.45	0.38	3368500	3084000	-8.45
TRENT	783.1	786.7	0.46	1118675	1028775	-8.04
EXIDEIND	178.9	182.8	2.18	13564800	12592800	-7.17
UBL	1210.25	1206.25	-0.33	1007300	936600	-7.02
CUMMINSIND	838.8	842.3	0.42	1015800	961800	-5.32
LALPATHLAB	2926	2928.65	0.09	381500	362500	-4.98
TORNTPOWER	397.1	397.3	0.05	1839000	1752000	-4.73
MUTHOOTFIN	1163.2	1167.8	0.40	2939250	2822250	-3.98
RECLTD	128.9	128.2	-0.54	15702000	15156000	-3.48

# Technical Trend

## Pivot Report– Nifty F&O

Symbol	Last Rate	Pivot	Support3	Support2	Support 1	Resist1	Resist2	Resist3
Aarti Industries Ltd.	1643.3	1631.2	1549.2	1572.5	1607.9	1666.5	1689.8	1725.2
ACC Ltd.	1898.0	1885.4	1814.1	1833.7	1865.8	1917.5	1937.1	1969.2
Adani Enterprises Ltd.	1255.6	1214.2	1022.3	1072.5	1164.0	1305.8	1356.0	1447.5
Adani Ports & Special Economic Zone Ltd.	761.4	746.4	678.5	696.1	728.8	779.0	796.6	829.3
Alembic Pharmaceuticals Ltd.	983.6	986.1	948.8	962.1	972.8	996.8	1010.1	1020.8
Alkem Laboratories Ltd.	2762.0	2783.8	2640.4	2695.5	2728.7	2817.1	2872.2	2905.4
Amara Raja Batteries Ltd.	782.3	776.9	727.9	742.4	762.4	796.9	811.4	831.4
Ambuja Cements Ltd.	311.7	308.6	292.7	297.0	304.3	315.9	320.2	327.5
Apollo Hospitals Enterprises Ltd.	3204.3	3188.7	3073.8	3106.9	3155.6	3237.4	3270.5	3319.2
Apollo Tyres Ltd.	221.3	219.2	203.4	207.9	214.6	225.9	230.4	237.1
Ashok Leyland Ltd.	111.9	110.9	105.1	106.7	109.3	113.4	115.0	117.6
Asian Paints Ltd.	2582.2	2561.0	2437.3	2471.5	2526.8	2616.3	2650.5	2705.8
Au Small Finance Bank Ltd.	924.1	929.4	873.1	893.7	908.9	944.6	965.2	980.4
Aurobindo Pharma Ltd.	968.8	973.5	940.0	952.8	960.8	981.5	994.3	1002.3
Axis Bank Ltd.	702.8	701.0	678.0	685.1	693.9	709.8	716.9	725.7
Bajaj Auto Ltd.	3851.9	3847.9	3667.2	3726.1	3789.0	3910.8	3969.7	4032.6
Bajaj Finance	5551.2	5474.1	5079.5	5185.4	5368.3	5657.0	5762.9	5945.8
Bajaj Finserv Ltd.	11041.7	10988.9	10570.4	10692.3	10867.0	11163.6	11285.5	11460.2
Balkrishna Industries Ltd.	1783.4	1773.5	1699.3	1720.8	1752.1	1804.8	1826.3	1857.6
Bandhan Bank Ltd.	318.9	321.1	296.6	305.5	312.2	327.8	336.7	343.4
BANK NIFTY	32465.8	32313.0	31399.4	31653.0	32059.4	32719.4	32973.0	33379.4
Bank of Baroda	66.7	66.0	62.4	63.4	65.0	67.6	68.6	70.2
Bata India Ltd.	1348.1	1350.8	1313.0	1326.5	1337.3	1361.6	1375.1	1385.9
Berger Paints India Ltd.	712.3	707.8	684.6	690.9	701.6	718.5	724.8	735.5
Bharat Electronics Ltd.	130.3	130.7	124.5	126.7	128.5	132.5	134.7	136.5
Bharat Forge Ltd.	616.1	611.5	582.0	590.3	603.2	624.4	632.7	645.6
Bharat Heavy Electricals Ltd.	53.5	52.0	41.1	44.3	48.9	56.6	59.8	64.4
Bharat Petroleum Corporation Ltd.	416.0	420.2	397.6	406.5	411.3	424.9	433.8	438.6
Bharti Airtel Ltd.	558.9	550.1	504.3	516.7	537.8	571.2	583.6	604.7
Biocon Ltd.	378.5	378.5	368.4	371.7	375.1	381.9	385.2	388.6
Bosch Ltd.	13515.5	13433.3	12987.7	13108.8	13312.2	13636.7	13757.8	13961.2
Britannia Industries Ltd.	3439.3	3449.9	3373.9	3402.8	3421.0	3468.1	3497.0	3515.2
Cadila Healthcare Ltd.	580.8	578.6	558.6	564.5	572.7	586.7	592.6	600.8
Canara Bank	138.8	138.2	132.6	134.3	136.5	140.4	142.1	144.3
Cholamandalam Investment and Finance Company	559.1	560.0	543.2	549.1	554.1	565.0	570.9	575.9
Cipla Ltd.	910.2	913.7	884.9	895.7	902.9	920.9	931.7	938.9
City Union Bank Ltd.	169.6	167.2	156.3	159.2	164.4	172.4	175.3	180.5
Coal India Ltd	132.2	132.3	128.9	130.0	131.1	133.4	134.5	135.6
Coforge Ltd.	2902.8	2882.9	2766.8	2798.9	2850.8	2934.8	2966.9	3018.8
Colgate Palmolive (India) Ltd.	1493.1	1491.8	1430.4	1450.5	1471.8	1513.1	1533.2	1554.5
Container Corporation of India Ltd.	572.5	579.9	536.6	553.5	563.0	589.4	606.3	615.8
Cummins India Ltd.	837.5	833.6	805.5	813.6	825.5	845.5	853.6	865.5
Dabur India Ltd.	542.4	543.1	528.1	533.3	537.9	547.7	552.9	557.5
Deepak Nitrite	1904.1	1904.9	1755.4	1805.5	1854.8	1954.2	2004.3	2053.6
Divi's Laboratories Ltd.	4074.0	4082.1	3894.7	3959.9	4016.9	4139.2	4204.4	4261.4
DLF Ltd.	247.9	246.2	236.2	239.0	243.4	250.6	253.4	257.8
Dr. Lal Pathlabs Ltd.	2928.7	2931.0	2848.5	2876.8	2902.7	2956.9	2985.2	3011.1
Dr. Reddy's Laboratories Ltd.	5186.0	5179.4	5074.2	5107.1	5146.5	5218.9	5251.8	5291.2
Eicher Motors Ltd.	2396.3	2393.3	2321.7	2344.6	2370.4	2419.2	2442.1	2467.9
Escorts Ltd.	1127.6	1119.9	1075.6	1087.8	1107.7	1139.8	1152.0	1171.9
Exide Industries Ltd.	181.7	181.3	170.2	173.7	177.7	185.3	188.8	192.8

# Technical Trend

Symbol	Last Rate	Pivot	Support3	Support2	Support 1	Resist1	Resist2	Resist3
Federal Bank Ltd.	79.9	79.2	74.4	75.8	77.8	81.2	82.6	84.6
GAIL (India) Ltd.	137.5	136.8	131.8	133.2	135.4	138.9	140.3	142.5
Glenmark Pharmaceuticals Ltd.	577.8	578.8	556.7	564.4	571.1	585.5	593.2	599.9
GMR Infrastructure Ltd.	23.4	23.2	21.7	22.1	22.8	23.8	24.2	24.9
Godrej Consumer Products Ltd.	709.1	703.3	667.8	677.7	693.4	718.9	728.8	744.5
Godrej Properties Ltd.	1309.7	1322.2	1230.5	1265.2	1287.5	1344.5	1379.2	1401.5
Granules India	341.1	339.2	317.9	324.4	332.7	347.5	354.0	362.3
Grasim Industries Ltd.	1414.6	1404.6	1333.4	1353.8	1384.2	1435.0	1455.4	1485.8
Gujarat Gas Co. Ltd.	532.4	531.5	508.5	515.9	524.1	539.8	547.2	555.4
Havell's India Ltd.	1004.7	994.2	942.5	956.2	980.5	1018.5	1032.2	1056.5
HCL Technologies Ltd.	907.7	903.1	876.2	883.6	895.7	915.1	922.5	934.6
HDFC Asset Management Company Ltd.	2754.0	2753.9	2699.8	2717.8	2735.9	2772.0	2790.0	2808.1
HDFC Bank Ltd.	1414.5	1404.6	1342.6	1360.0	1387.2	1431.8	1449.2	1476.4
HDFC Life Insurance Company Ltd.	671.9	667.9	643.9	650.5	661.2	678.6	685.2	695.9
Hero MotoCorp Ltd.	2793.3	2802.6	2675.9	2721.3	2757.3	2838.6	2884.0	2920.0
Hindalco Industries Ltd.	370.0	366.9	345.1	351.4	360.7	376.2	382.5	391.8
Hindustan Petroleum Corporation Ltd.	235.9	234.7	226.1	228.6	232.2	238.3	240.8	244.4
Hindustan Unilever Ltd.	2408.0	2387.7	2285.3	2312.7	2360.3	2435.3	2462.7	2510.3
Housing Development Finance	2418.5	2405.5	2310.1	2337.5	2378.0	2446.0	2473.4	2513.9
I T C Ltd.	201.0	200.9	198.2	199.1	200.0	201.9	202.8	203.7
ICICI Bank Ltd.	596.8	594.4	578.5	583.0	589.9	601.2	605.7	612.6
ICICI Lombard General Insurance Company Ltd.	1435.6	1422.9	1350.1	1370.1	1402.9	1455.7	1475.7	1508.5
ICICI Prudential Life Insurance	551.7	542.2	495.0	507.6	529.6	564.2	576.8	598.8
IDFC First Bank Ltd.	54.0	53.9	51.3	52.2	53.1	54.8	55.7	56.6
Indiabulls Housing Finance	178.1	178.2	171.6	173.8	176.0	180.3	182.5	184.7
Indian Oil Corporation Ltd.	91.5	91.0	87.7	88.6	90.0	92.4	93.3	94.7
Indian Railway Catering & Tourism	1765.6	1766.8	1722.8	1737.9	1751.7	1780.7	1795.8	1809.6
Indraprastha Gas Ltd.	500.9	501.8	482.0	488.9	494.9	507.8	514.7	520.7
Indus Towers Ltd.	260.8	257.7	241.5	245.9	253.3	265.1	269.5	276.9
IndusInd Bank Ltd.	913.6	926.8	817.1	858.1	885.8	954.5	995.5	1023.2
Info Edge (India) Ltd.	4865.0	4863.0	4753.0	4789.0	4827.0	4901.0	4937.0	4975.0
Infosys Ltd.	1352.1	1350.4	1316.7	1327.4	1339.7	1362.7	1373.4	1385.7
Interglobe Aviation	1666.3	1651.1	1564.8	1588.5	1627.4	1690.0	1713.7	1752.6
Jindal Steel & Power Ltd.	445.3	443.8	418.2	426.2	435.8	453.3	461.3	470.9
JSW Steel Ltd.	723.3	721.3	693.2	701.9	712.6	732.0	740.7	751.4
Jubilant Foodworks Limited	2889.0	2886.1	2774.5	2810.7	2849.8	2925.2	2961.4	3000.5
Kotak Mahindra Bank Ltd.	1725.5	1723.2	1613.3	1649.2	1687.3	1761.3	1797.2	1835.3
L&T Finance Holdings Ltd.	86.6	86.2	82.9	83.9	85.2	87.5	88.5	89.8
L&T Technology Services	2797.4	2752.5	2504.9	2572.5	2684.9	2864.9	2932.5	3044.9
Larsen & Toubro Infotech	3923.6	3904.5	3779.1	3814.5	3869.1	3959.1	3994.5	4049.1
Larsen & Toubro Ltd.	1342.5	1337.7	1291.9	1305.5	1324.0	1356.2	1369.8	1388.3
LIC Housing Finance Ltd.	407.8	406.0	387.8	393.3	400.5	413.3	418.8	426.0
Lupin Ltd.	1072.9	1072.0	1038.6	1049.5	1061.2	1083.7	1094.6	1106.3
Mahanagar Gas Ltd	1137.9	1135.7	1084.6	1100.9	1119.4	1154.2	1170.5	1189.0
Mahindra & Mahindra Financial	160.3	160.3	153.6	155.8	158.1	162.6	164.8	167.1
Mahindra & Mahindra Ltd.	753.0	753.2	713.3	726.7	739.8	766.3	779.7	792.8
Manappuram Finance Limited	148.4	146.8	138.6	140.8	144.6	150.6	152.8	156.6
Marico Ltd.	445.2	438.4	384.9	400.5	422.8	460.7	476.3	498.6
Maruti Suzuki India Ltd.	6597.9	6540.0	6235.9	6318.0	6457.9	6679.9	6762.0	6901.9
Max Financial Services Ltd.	895.1	893.7	860.1	870.8	883.0	905.8	916.5	928.7

# Technical Trend

Symbol	Last Rate	Pivot	Support3	Support2	Support 1	Resist1	Resist2	Resist3
Motherson Sumi Systems Ltd.	215.7	215.3	202.8	206.8	211.3	219.8	223.8	228.3
MphasiS Ltd.	1785.8	1775.8	1718.5	1734.3	1760.0	1801.5	1817.3	1843.0
MRF Ltd.	79907.5	80111.9	77267.8	78284.0	79095.7	80923.6	81939.8	82751.5
Muthoot Finance	1159.7	1153.1	1111.9	1123.4	1141.6	1171.3	1182.8	1201.0
National Aluminium Co. Ltd.	67.7	66.8	60.7	62.4	65.0	69.4	71.1	73.7
Navin Fluorine International Ltd.	3493.7	3481.8	3280.2	3343.4	3418.5	3556.9	3620.1	3695.2
Nestle India Ltd.	16506.8	16451.5	16025.8	16149.3	16328.0	16630.2	16753.7	16932.4
Nippon Life India Asset Management Ltd.	338.7	338.2	329.7	332.4	335.5	341.3	344.0	347.1
NMDC Ltd.	159.0	156.7	145.3	148.3	153.7	162.0	165.0	170.4
NTPC Ltd.	104.3	103.3	98.5	99.8	102.0	105.6	106.9	109.1
Oil & Natural Gas Corporation Ltd.	107.7	108.1	100.9	103.4	105.6	110.3	112.8	115.0
Page Industries	29690.8	29643.3	28675.9	28982.5	29336.7	29997.5	30304.1	30658.3
Petronet LNG Ltd.	237.7	237.4	231.2	233.2	235.4	239.7	241.7	243.9
Pfizer Ltd.	5307.3	5306.1	5026.2	5119.1	5213.2	5400.2	5493.1	5587.2
PI Industries Limited	2515.9	2520.8	2429.6	2461.6	2488.7	2547.9	2579.9	2607.0
Pidilite Industries Ltd.	1811.1	1810.6	1767.7	1781.8	1796.5	1825.3	1839.4	1854.1
Piramal Enterprises	1707.4	1692.6	1608.0	1631.3	1669.3	1730.6	1753.9	1791.9
Power Finance Corporation Ltd.	107.0	107.1	103.8	105.0	106.0	108.1	109.3	110.3
Power Grid Corporation of India Ltd.	220.8	220.1	211.3	214.0	217.4	223.5	226.2	229.6
Punjab National Bank	34.5	34.4	33.4	33.7	34.1	34.8	35.1	35.5
PVR Limited	1137.2	1128.3	1060.0	1079.8	1108.5	1157.0	1176.8	1205.5
RBL Bank	181.2	181.7	168.8	173.3	177.2	185.7	190.2	194.1
REC Ltd.	127.4	127.5	122.9	124.5	125.9	129.0	130.6	132.0
Reliance Industries Ltd.	1959.1	1960.4	1905.9	1924.5	1941.8	1977.7	1996.3	2013.6
S&P CNX NIFTY	14634.2	14574.7	14218.1	14317.1	14475.7	14733.3	14832.3	14990.9
SBI Life Insurance Company Ltd.	958.6	951.6	859.2	887.6	923.1	987.1	1015.5	1051.0
Shree Cement Ltd.	27989.8	27799.3	26765.1	27046.3	27518.1	28271.1	28552.3	29024.1
Shriram Transport Finance Co. Ltd.	1298.9	1303.0	1212.8	1244.2	1271.5	1330.3	1361.7	1389.0
Siemens Ltd.	1885.9	1880.3	1815.6	1835.3	1860.6	1905.6	1925.3	1950.6
SRF Ltd.	6530.1	6493.3	6196.9	6283.5	6406.8	6616.6	6703.2	6826.5
State Bank of India	350.6	348.2	332.7	337.1	343.8	354.9	359.3	366.0
Steel Authority of India Ltd.	127.8	124.9	105.1	110.8	119.3	133.4	139.1	147.6
Sun Pharmaceutical Industries Ltd.	659.2	657.8	637.7	643.9	651.6	665.4	671.6	679.3
Sun TV Network Ltd.	505.2	521.9	427.3	464.4	484.8	542.3	579.4	599.8
Tata Chemicals Ltd.	783.2	782.3	747.1	758.6	770.9	794.6	806.1	818.4
Tata Consultancy Services Ltd.	3037.0	3032.0	2958.0	2981.0	3009.0	3060.0	3083.0	3111.0
Tata Consumer Products Ltd.	677.1	673.5	643.1	652.0	664.6	686.1	695.0	707.6
Tata Motors Ltd.	293.0	290.9	277.3	281.2	287.1	296.8	300.7	306.6
Tata Power Co. Ltd.	99.9	98.9	93.3	94.8	97.3	101.4	102.9	105.4
Tata Steel Ltd.	1064.8	1050.8	982.0	1000.3	1032.5	1083.0	1101.3	1133.5
Tech Mahindra Ltd.	957.7	959.2	943.5	949.2	953.5	963.5	969.2	973.5
The Ramco Cements Ltd.	982.9	977.7	947.6	955.9	969.4	991.2	999.5	1013.0
Titan Company Ltd.	1424.0	1440.7	1348.3	1384.7	1404.3	1460.3	1496.7	1516.3
Torrent Pharmaceuticals Ltd.	2526.6	2520.2	2461.9	2479.2	2502.9	2543.9	2561.2	2584.9
Torrent Power Ltd.	395.2	399.5	357.2	372.7	384.0	410.7	426.2	437.5
Trent Ltd.	783.1	768.7	699.5	717.8	750.4	801.3	819.6	852.2
TVS Motor Company Ltd.	616.1	622.4	583.8	598.7	607.4	631.1	646.0	654.7
UltraTech Cement Ltd.	6350.2	6293.4	5976.8	6063.4	6206.8	6436.8	6523.4	6666.8
United Breweries Ltd.	1210.1	1208.9	1174.6	1185.6	1197.9	1221.2	1232.2	1244.5
United Spirits Ltd.	524.8	521.1	502.8	507.7	516.2	529.7	534.6	543.1
UPL Ltd.	617.8	611.2	579.1	587.6	602.7	626.3	634.8	649.9
Vedanta Ltd	256.5	257.2	242.1	247.4	251.9	261.7	267.0	271.5
Vodafone Idea Ltd.	8.5	8.4	8.0	8.1	8.3	8.6	8.7	8.9
Voltas Ltd.	958.7	952.2	915.5	925.6	942.1	968.7	978.8	995.3
Wipro Ltd.	487.4	488.9	469.0	476.1	481.7	494.5	501.6	507.2
Zee Entertainment Enterprises Ltd	183.8	183.1	178.4	179.8	181.8	185.1	186.5	188.5



**Disclaimer Appendix****Analyst s holding in the Stock : Nil****Analyst s Certification:**

We analysts and the authors of this report, hereby certify that all of the views expressed in this research report accurately reflect our personal views about any and all of the subject issuer s or securities. We also certify that no part of our compensation was, is, or will be directly or indirectly related to the specific recommendation s or view s in this report. Analysts aren't registered as research analysts by FINRA and might not be an associated person of the BP Equities Pvt. Ltd. Institutional Equities.

**General Disclaimer**

This report has been prepared by the research department of BP EQUITIES Pvt. Ltd, is for information purposes only. This report is not construed as an offer to sell or the solicitation of an offer to buy or sell any security in any jurisdiction where such an offer or solicitation would be illegal.

BP EQUITIES Pvt. Ltd have exercised due diligence in checking the correctness and authenticity of the information contained herein, so far as it relates to current and historical information, but do not guarantee its accuracy or completeness. The opinions expressed are our current opinions as of the date appearing in the material and may be subject to change from time to time. Prospective investors are cautioned that any forward looking statement are not predictions and are subject to change without prior notice.

Recipients of this material should rely on their own investigations and take their own professional advice. BP EQUITIES Pvt. Ltd or any of its affiliates or employees shall not be in any way responsible for any loss or damage that may arise to any person from any inadvertent error in the information contained in this report. BP EQUITIES Pvt. Ltd. or any of its affiliates or employees do not provide, at any time, any express or implied warranty of any kind, regarding any matter pertaining to this report, including without limitation the implied warranties of merchantability, fitness for a particular purpose, and non-infringement. The recipients of this report should rely on their own investigations.

BP EQUITIES Pvt. Ltd and/or its affiliates and/or employees may have interests/ positions, financial or otherwise in the securities mentioned in this report. Opinions expressed are our current opinions as of the date appearing on this material only. While we endeavor to update on a reasonable basis the information discussed in this material, there may be regulatory, compliance, or other reasons that prevent us from doing so.

This report is not directed to or intended for display, downloading, printing, reproducing or for distribution to or use by any person in any locality, state and country or other jurisdiction where such distribution, publication or use would be contrary to the law or regulation or would subject to BP EQUITIES Pvt. Ltd or any of its affiliates to any registration or licensing requirement within such jurisdiction.

**Corporate Office:**

4th floor,  
Rustom Bldg,  
29, Veer Nariman Road, Fort,  
Mumbai-400001  
Phone- +91 22 6159 6464  
Fax-+91 22 6159 6160  
Website- [www.bpwealth.com](http://www.bpwealth.com)

**Registered Office:**

24/26, 1st Floor, Cama Building,  
Dalal street, Fort,  
Mumbai-400001  
BP Equities Pvt. Ltd.  
CIN No: U67120MH1997PTC107392