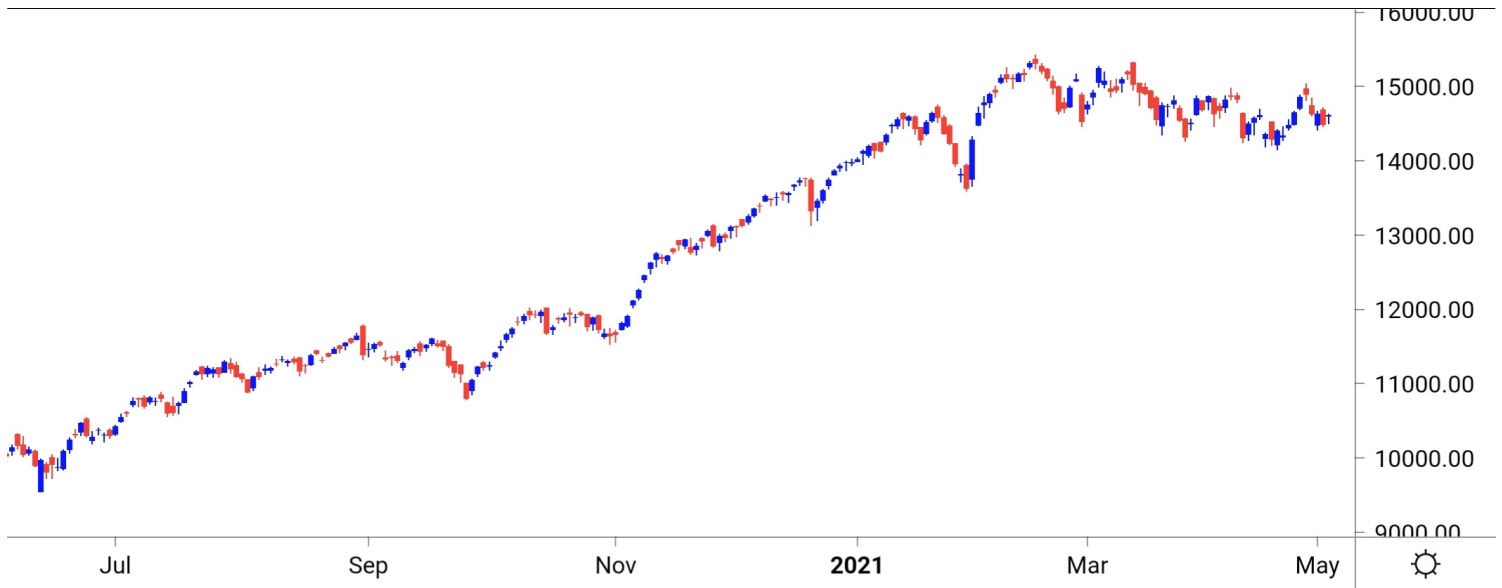


NIFTY SPOT : IMMEDIATE SUPPORT AT 14530-14450



Source: Falcon, BP Equities Research

Nifty spot closed 0.84% higher at 14617. Index opened with the gap up and traded in a small range throughout the day closing session near opening price. Going ahead index has an immediate support around 14530-14450-14400. On the higher side resistance is placed at 14680-14750-14850.

Intraday Nifty

Resistance - 14680-14750-14850

Support - 14530-14450-14400

BANK NIFTY SPOT : IMMEDIATE SUPPORT AT 32500-32250



Source: Falcon, BP Equities Research

Bank Nifty spot closed 1.59% higher at 32783. Banknifty opened with the gap up and remained volatile throughout the day closing session near days high. Going forward Banknifty has an immediate resistance near 33000-33300-33500. While on the downside immediate support is placed around 32500-32250-31900.

Intraday Bank Nifty

Resistance - 33000-33300-33500

Support - 32500-32250-31900

Technical Trend

INTRADAY TRADER'S PICKS

Sr.No.	STOCK	CLOSE	Target 1	Target 2	Stop Loss	RECOMMENDATION
1	LT	1338	1357	1372	1327	BUY ABOVE 1342
2	BAJAJ-AUTO	3843	3885	3920	3815	BUY ABOVE 3850
3	ULTRACEMCO	6380	6460	6520	6340	BUY ABOVE 6400
4	ASIANPAINT	2567	2525	2500	2575	SELL BELOW 2550
5	HINDUNILVR	2395	2360	2335	2410	SELL BELOW 2385

DERIVATIVES

INDICES SNAPSHOT

SCRIPS	CP AS ON 4/5/2021	CP AS ON 5/5/2021	Change (%)	OI AS ON 4/5/2021	OI AS ON 5/5/2021	Change (%)
BANKNIFTY	32422.55	32973.65	1.70	1605475	1604950	-0.03
FINNIFTY	15475.8	15668.85	1.25	37680	46160	22.51
NIFTY	14549.3	14679.1	0.89	11846875	11725925	-1.02

Derivative Highlights

- ⇒ Nifty Future closed with a Premium of 76 points v/s a Premium of 56 points in the previous session.
- ⇒ Nifty Future Open Interest Decreased by 1.02%. Bank Nifty Future Open Interest Decreased by 0.03%.
- ⇒ Nifty PCR - OI Increased from 0.60 to 0.74, Nifty Bank PCR - OI Increased from 0.71 to 0.94.
- ⇒ FII Sold Rs 1110.50 crore while DII Sold Rs 240.61 crore in the Cash Segment. FII Bought Rs 9.62 crore in Index Futures, Sold Rs 2386.49 crore in index options, while in Future they Bought Rs 722.18 crore and Sold Rs 192.93 in stock options.
- ⇒ Among Index Option space, Highest Open Interest concentration was seen in 14000 & 14500 Strike price among the PE options. Where as among CE Options Highest Open Interest Concentration was seen in 15000 & 14900 Strike price.
- ⇒ Highest Open Interest Build Up among the PE options was seen in 14600 & 14350 Strike price. Among CE options highest build up was seen in 14850 & 14600 Strike price.

OI Concentration

PUT OPTION		CALL OPTION	
Strike Price	Open Interest	Strike Price	Open Interest
14000	4281750	15000	6177450
14500	2985300	14900	3806025
14600	2892900	14800	3714975
14400	2621625	14700	3347550
14300	2420325	14600	3105825

Highest Change in OI

PUT OPTION		CALL OPTION	
Strike Price	Change in OI	Strike Price	Change in OI
14600	1391625	14850	614025
14350	696075	14600	314850
14300	607425	15000	266475
14400	548400	14800	183375
14550	548175	16500	146850

MWPL

SCRIPS	OI %	BAN
TATACHEM	96%	YES
SUNTV	92%	YES
BHEL	92%	NO
NATIONALUM	82%	NO
CANBK	77%	NO
SAIL	71%	NO
PNB	67%	NO
ADANI PORTS	65%	NO
CADILAHC	63%	NO
IDEA	55%	NO

Technical Trend

Stock Analysis

Long Build-up	Long Unwinding	Short Build-up	Short Covering
AARTIIND	ASIANPAINT	APOLLOTYRE	AUBANK
BIOCON		BANDHANBNK	AXISBANK
CIPLA		GODREJPROP	GODREJCP
DRREDDY		IRCTC	ITC
IDEA		M&MFIN	LTI
LUPIN		MFSL	PETRONET

STATISTICS

Highest Premium

SCRIPS	Premium %	Price change %
IDEA	1.20	1.21
DEEPAKNTR	0.84	2.16
CONCOR	0.82	-0.25
NMDC	0.81	6.12
ALKEM	0.81	3.42

Highest Discount

SCRIPS	Premium %	Price change %
PNB	-0.67	0.00
AARTIIND	-0.21	4.90
BANDHANBNK	-0.11	-2.01
INDIGO	-0.01	1.69

TOP 5 VOLUME GAINER FOR THE SESSION

SCRIPS	CP AS ON 4/5/2021	CP AS ON 5/5/2021	Change (%)	VOL AS ON 4/5/2021	VOL AS ON 5/5/2021	Change (%)
LUPIN	1061.75	1208.85	13.85	3019	30801	920.24
APOLLOHOSP	3200.25	3357.55	4.92	1774	8841	398.37
ALKEM	2810.3	2918.1	3.84	647	2918	351.00
PIIND	2505.7	2683.45	7.09	619	2686	333.93
PFIZER	5261.5	5486.6	4.28	436	1839	321.79

TOP 5 VOLUME LOSER FOR THE SESSION

SCRIPS	CP AS ON 4/5/2021	CP AS ON 5/5/2021	Change (%)	VOL AS ON 4/5/2021	VOL AS ON 5/5/2021	Change (%)
LTTS	2583.3	2586.35	0.12	4311	928	-78.47
NAM-INDIA	340.75	340.75	0.00	296	113	-61.82
IDFCFIRSTB	55.85	56.4	0.98	8633	3350	-61.20
IBULHSGFIN	178.5	180.9	1.34	3327	1367	-58.91
TATAPOWER	101.45	102.55	1.08	8590	3691	-57.03

Technical Trend

TOP 10 OPEN INTEREST GAINER FOR THE SESSION

SCRIPS	CP AS ON 4/5/2021	CP AS ON 5/5/2021	Change (%)	OI AS ON 4/5/2021	OI AS ON 5/5/2021	Change (%)
VEDL	260.1	266.25	2.36	71442600	95712500	33.97
AARTIIND	1634.4	1712.3	4.77	589900	736525	24.86
FINNIFTY	15475.8	15668.85	1.25	37680	46160	22.51
BANDHANBNK	318.8	310.9	-2.48	16911000	20250000	19.74
M&MFIN	156.3	154.9	-0.90	21304000	24896000	16.86
LUPIN	1061.75	1208.85	13.85	8415000	9806450	16.54
SRF	6750.35	6890.35	2.07	521875	598375	14.66
BHEL	52.75	57.15	8.34	115384500	131722500	14.16
APLLTD	1011.55	960.8	-5.02	1139600	1273800	11.78
BEL	133.5	138.8	3.97	31680600	35362800	11.62

TOP 10 OPEN INTEREST LOSER FOR THE SESSION

SCRIPS	CP AS ON 4/5/2021	CP AS ON 5/5/2021	Change (%)	OI AS ON 4/5/2021	OI AS ON 5/5/2021	Change (%)
SIEMENS	1880.55	1846.8	-1.79	961675	854975	-11.10
VOLTAS	967	976.7	1.00	2840500	2540000	-10.58
BANKBARODA	70.8	72.65	2.61	120287700	112086000	-6.82
RAMCOCEM	966.4	979.45	1.35	1732300	1617550	-6.62
RBLBANK	181.65	184.75	1.71	29258100	27587700	-5.71
TCS	3057.75	3106.7	1.60	7101300	6716400	-5.42
BATAINDIA	1364.2	1366.75	0.19	1198450	1133550	-5.42
AMBUJACEM	308.05	312.25	1.36	18648000	17676000	-5.21
LTI	3863.85	3941.55	2.01	393000	375150	-4.54
LICHSGFIN	409.6	415.25	1.38	5668000	5424000	-4.30

Technical Trend

Pivot Report– Nifty F&O

Symbol	Last Rate	Pivot	Support3	Support2	Support 1	Resist1	Resist2	Resist3
Aarti Industries Ltd.	1715.7	1706.6	1561.1	1606.6	1661.1	1761.1	1806.6	1861.1
ACC Ltd.	1888.6	1885.5	1845.3	1857.7	1873.1	1901.0	1913.4	1928.8
Adani Enterprises Ltd.	1267.5	1265.3	1194.4	1217.3	1242.4	1290.4	1313.3	1338.4
Adani Ports & Special Economic Zone Ltd.	738.1	748.5	680.2	706.4	722.3	764.4	790.6	806.5
Alembic Pharmaceuticals Ltd.	955.8	966.6	886.3	916.7	936.2	986.2	1016.6	1036.1
Alkem Laboratories Ltd.	2894.5	2887.4	2648.2	2725.6	2810.0	2971.9	3049.3	3133.7
Amara Raja Batteries Ltd.	769.4	770.7	753.8	759.9	764.6	775.4	781.5	786.2
Ambuja Cements Ltd.	311.5	310.3	303.2	305.2	308.3	313.5	315.5	318.6
Apollo Hospitals Enterprises Ltd.	3332.9	3288.7	3039.5	3107.8	3220.4	3401.2	3469.5	3582.1
Apollo Tyres Ltd.	214.6	215.7	202.3	207.1	210.9	219.4	224.2	228.0
Ashok Leyland Ltd.	112.2	111.5	107.6	108.7	110.4	113.2	114.3	116.0
Asian Paints Ltd.	2567.7	2576.9	2465.9	2506.0	2536.8	2607.7	2647.8	2678.6
Au Small Finance Bank Ltd.	942.1	934.8	874.8	892.4	917.2	959.7	977.3	1002.1
Aurobindo Pharma Ltd.	1018.1	999.6	905.2	930.5	974.3	1043.4	1068.7	1112.5
Axis Bank Ltd.	717.2	712.1	686.1	693.0	705.1	724.2	731.1	743.2
Bajaj Auto Ltd.	3843.8	3826.8	3732.6	3758.3	3801.1	3869.6	3895.3	3938.1
Bajaj Finance	5515.2	5555.9	5164.1	5308.3	5411.7	5659.3	5803.5	5906.9
Bajaj Finserv Ltd.	11114.5	11074.8	10675.4	10795.3	10954.9	11234.4	11354.3	11513.9
Balkrishna Industries Ltd.	1798.3	1793.6	1747.3	1761.2	1779.7	1812.1	1826.0	1844.5
Bandhan Bank Ltd.	311.3	314.6	294.9	302.6	306.9	318.9	326.6	330.9
BANK NIFTY	32783.7	32571.5	31487.3	31778.0	32280.8	33074.3	33365.0	33867.8
Bank of Baroda	72.4	72.1	69.1	70.0	71.2	73.3	74.2	75.4
Bata India Ltd.	1359.8	1360.7	1337.7	1345.6	1352.7	1367.8	1375.7	1382.8
Berger Paints India Ltd.	711.5	710.5	696.1	700.6	706.0	715.9	720.4	725.8
Bharat Electronics Ltd.	137.9	136.3	128.1	130.3	134.1	140.1	142.3	146.1
Bharat Forge Ltd.	639.7	635.3	607.9	615.6	627.6	647.4	655.1	667.1
Bharat Heavy Electricals Ltd.	56.8	55.9	49.2	51.1	53.9	58.7	60.6	63.4
Bharat Petroleum Corporation Ltd.	424.8	425.8	409.4	415.2	420.0	430.6	436.4	441.2
Bharti Airtel Ltd.	560.0	559.6	543.4	548.7	554.3	565.3	570.6	576.2
Biocon Ltd.	381.3	378.0	361.0	365.6	373.4	385.9	390.5	398.3
Bosch Ltd.	13343.5	13334.2	13025.1	13125.0	13234.3	13443.5	13543.4	13652.7
Britannia Industries Ltd.	3451.6	3448.9	3416.3	3426.3	3438.9	3461.6	3471.6	3484.2
Cadila Healthcare Ltd.	601.7	591.7	533.3	549.4	575.6	617.8	633.9	660.1
Canara Bank	145.6	145.3	137.2	139.8	142.7	148.2	150.8	153.7
Cholamandalam Investment and Finance Company	558.6	554.5	534.3	539.7	549.1	564.0	569.4	578.8
Cipla Ltd.	888.7	885.6	842.1	855.6	872.1	902.1	915.6	932.1
City Union Bank Ltd.	169.8	168.9	162.0	164.0	166.9	171.8	173.8	176.7
Coal India Ltd	133.2	133.4	130.3	131.4	132.3	134.3	135.4	136.3
Coforge Ltd.	2892.8	2877.8	2780.2	2807.8	2850.3	2920.3	2947.9	2990.4
Colgate Palmolive (India) Ltd.	1493.6	1494.5	1465.3	1475.3	1484.5	1503.7	1513.7	1522.9
Container Corporation of India Ltd.	568.3	570.3	550.4	557.7	563.0	575.6	582.9	588.2
Cummins India Ltd.	852.3	848.0	813.8	823.8	838.0	862.2	872.2	886.4
Dabur India Ltd.	541.0	540.2	532.5	534.8	537.9	543.3	545.6	548.7
Deepak Nitrite	1904.0	1891.3	1777.8	1811.4	1857.7	1937.6	1971.2	2017.5
Divi's Laboratories Ltd.	4035.5	4025.0	3895.9	3935.5	3985.5	4075.0	4114.6	4164.6
DLF Ltd.	248.5	249.6	239.0	242.9	245.7	252.4	256.3	259.1
Dr. Lal Pathlabs Ltd.	2836.1	2849.4	2749.7	2787.4	2811.7	2873.7	2911.4	2935.7
Dr. Reddy's Laboratories Ltd.	5161.0	5144.3	4954.6	5012.3	5086.6	5218.6	5276.3	5350.6
Eicher Motors Ltd.	2372.4	2372.1	2326.3	2341.4	2356.9	2387.6	2402.7	2418.2
Escorts Ltd.	1123.0	1123.0	1088.7	1100.2	1111.6	1134.4	1145.9	1157.3
Exide Industries Ltd.	182.8	182.5	178.7	179.9	181.3	183.9	185.1	186.5

Technical Trend

Symbol	Last Rate	Pivot	Support3	Support2	Support 1	Resist1	Resist2	Resist3
Federal Bank Ltd.	80.1	80.0	77.0	78.0	79.0	81.0	82.0	83.0
GAIL (India) Ltd.	145.1	145.6	136.6	139.8	142.4	148.3	151.5	154.1
Glenmark Pharmaceuticals Ltd.	572.9	568.9	538.4	547.2	560.1	581.8	590.6	603.5
GMR Infrastructure Ltd.	23.8	23.5	22.4	22.7	23.2	24.1	24.4	24.9
Godrej Consumer Products Ltd.	708.1	705.1	690.5	694.4	701.2	712.0	715.9	722.7
Godrej Properties Ltd.	1223.4	1247.2	1088.5	1149.3	1186.4	1284.2	1345.0	1382.1
Granules India	352.5	345.6	312.4	321.2	336.8	361.2	370.0	385.6
Grasim Industries Ltd.	1420.9	1427.0	1349.0	1377.0	1399.0	1448.9	1476.9	1498.9
Gujarat Gas Co. Ltd.	531.7	532.3	512.1	519.1	525.4	538.6	545.6	551.9
Havell's India Ltd.	997.2	994.6	956.2	968.1	982.7	1009.2	1021.1	1035.7
HCL Technologies Ltd.	909.4	906.9	892.9	896.7	903.1	913.3	917.1	923.5
HDFC Asset Management Company Ltd.	2730.0	2731.7	2678.4	2696.7	2713.3	2748.3	2766.6	2783.2
HDFC Bank Ltd.	1402.6	1398.0	1358.4	1370.1	1386.3	1414.2	1425.9	1442.1
HDFC Life Insurance Company Ltd.	674.4	672.4	660.2	663.6	669.0	677.8	681.2	686.6
Hero MotoCorp Ltd.	2788.2	2785.4	2738.8	2753.4	2770.8	2802.8	2817.4	2834.8
Hindalco Industries Ltd.	367.1	368.4	353.6	359.0	363.0	372.4	377.8	381.8
Hindustan Petroleum Corporation Ltd.	244.8	243.4	232.9	235.9	240.4	247.9	250.9	255.4
Hindustan Unilever Ltd.	2394.7	2399.1	2298.9	2333.8	2364.2	2429.6	2464.5	2494.9
Housing Development Finance	2377.6	2378.2	2304.4	2329.2	2353.4	2402.4	2427.2	2451.4
I T C Ltd.	201.4	201.0	197.4	198.5	199.9	202.4	203.5	204.9
ICICI Bank Ltd.	602.8	597.4	570.0	577.3	590.1	610.2	617.5	630.3
ICICI Lombard General Insurance Company Ltd.	1451.7	1454.9	1406.6	1423.8	1437.7	1468.8	1486.0	1499.9
ICICI Prudential Life Insurance	559.4	561.9	525.8	538.7	549.0	572.2	585.1	595.4
IDFC First Bank Ltd.	56.2	56.3	54.4	55.1	55.6	56.8	57.5	58.0
Indiabulls Housing Finance	179.6	179.4	173.5	175.4	177.5	181.5	183.4	185.5
Indian Oil Corporation Ltd.	92.2	92.5	89.9	90.8	91.5	93.2	94.1	94.8
Indian Railway Catering & Tourism	1723.7	1740.5	1630.2	1672.6	1698.1	1766.1	1808.5	1834.0
Indraprastha Gas Ltd.	508.5	509.4	491.5	497.8	503.1	514.7	521.0	526.3
Indus Towers Ltd.	253.6	253.9	244.9	248.0	250.8	256.6	259.7	262.5
IndusInd Bank Ltd.	931.2	925.1	889.9	899.6	915.4	940.8	950.5	966.3
Info Edge (India) Ltd.	4838.8	4790.6	4531.2	4601.6	4720.2	4909.2	4979.6	5098.2
Infosys Ltd.	1341.5	1337.7	1315.5	1321.6	1331.6	1347.7	1353.8	1363.8
Interglobe Aviation	1649.4	1636.7	1541.9	1569.3	1609.3	1676.7	1704.1	1744.1
Jindal Steel & Power Ltd.	439.4	438.5	424.3	428.7	434.1	443.9	448.3	453.7
JSW Steel Ltd.	717.7	721.3	689.6	701.4	709.5	729.4	741.2	749.3
Jubilant Foodworks Limited	2796.8	2785.6	2701.2	2725.6	2761.2	2821.2	2845.6	2881.2
Kotak Mahindra Bank Ltd.	1770.8	1756.9	1679.7	1700.8	1735.8	1791.9	1813.0	1848.0
L&T Finance Holdings Ltd.	85.6	85.7	82.4	83.6	84.6	86.7	87.9	88.9
L&T Technology Services	2567.9	2582.6	2485.2	2522.6	2545.2	2605.2	2642.6	2665.2
Larsen & Toubro Infotech	3915.2	3896.8	3674.0	3742.2	3828.7	3983.3	4051.5	4138.0
Larsen & Toubro Ltd.	1338.7	1336.5	1303.4	1313.7	1326.2	1348.9	1359.2	1371.7
LIC Housing Finance Ltd.	412.6	411.3	398.7	402.5	407.5	416.3	420.1	425.1
Lupin Ltd.	1200.5	1159.5	969.9	1019.4	1110.0	1250.0	1299.5	1390.1
Mahanagar Gas Ltd	1145.7	1152.5	1079.8	1106.3	1126.0	1172.2	1198.7	1218.4
Mahindra & Mahindra Financial	153.8	154.3	145.0	148.3	151.0	157.0	160.3	163.0
Mahindra & Mahindra Ltd.	747.6	744.6	728.6	733.0	740.3	751.9	756.3	763.6
Manappuram Finance Limited	149.1	148.8	144.1	145.5	147.3	150.6	152.0	153.8
Marico Ltd.	455.3	458.2	432.8	442.2	448.8	464.8	474.2	480.8
Maruti Suzuki India Ltd.	6590.1	6557.4	6399.7	6441.4	6515.7	6631.7	6673.4	6747.7
Max Financial Services Ltd.	889.6	890.7	842.1	858.7	874.1	906.1	922.7	938.1

Technical Trend

Symbol	Last Rate	Pivot	Support3	Support2	Support 1	Resist1	Resist2	Resist3
Motherson Sumi Systems Ltd.	219.7	217.7	204.0	207.9	213.8	223.6	227.5	233.4
MphasiS Ltd.	1747.2	1754.0	1686.2	1711.1	1729.1	1772.0	1796.9	1814.9
MRF Ltd.	78277.7	78475.9	75904.8	76827.9	77552.8	79200.8	80123.9	80848.8
Muthoot Finance	1150.8	1153.6	1122.2	1133.6	1142.2	1162.2	1173.6	1182.2
National Aluminium Co. Ltd.	66.7	67.1	64.0	65.2	65.9	67.9	69.1	69.8
Navin Fluorine International Ltd.	3477.7	3443.4	3161.3	3243.9	3360.8	3560.3	3642.9	3759.8
Nestle India Ltd.	16549.2	16538.9	16315.1	16386.3	16467.7	16620.3	16691.5	16772.9
Nippon Life India Asset Management Ltd.	339.1	339.5	328.9	332.5	335.8	342.8	346.4	349.7
NMDC Ltd.	167.4	165.3	154.4	157.3	162.3	170.3	173.2	178.2
NTPC Ltd.	103.9	104.1	99.7	101.3	102.6	105.4	107.0	108.3
Oil & Natural Gas Corporation Ltd.	111.1	111.9	106.2	108.4	109.7	113.2	115.4	116.7
Page Industries	29637.3	29565.4	28792.9	29026.4	29331.9	29870.9	30104.4	30409.9
Petronet LNG Ltd.	242.7	241.7	234.2	236.4	239.5	244.8	247.0	250.1
Pfizer Ltd.	5448.6	5401.3	5073.8	5167.2	5307.9	5542.0	5635.4	5776.1
PI Industries Limited	2672.4	2618.6	2321.0	2402.3	2537.3	2753.7	2835.0	2970.0
Pidilite Industries Ltd.	1812.7	1808.0	1777.0	1785.8	1799.2	1821.4	1830.2	1843.6
Piramal Enterprises	1720.9	1709.4	1627.2	1650.8	1685.8	1744.5	1768.1	1803.1
Power Finance Corporation Ltd.	109.2	109.1	106.5	107.4	108.3	110.0	110.9	111.8
Power Grid Corporation of India Ltd.	218.2	218.5	213.0	214.9	216.6	220.1	222.0	223.7
Punjab National Bank	37.5	37.8	35.3	36.2	36.8	38.4	39.3	39.9
PVR Limited	1110.9	1110.3	1056.7	1074.4	1092.6	1128.5	1146.2	1164.4
RBL Bank	184.2	183.8	174.0	177.1	180.7	187.3	190.4	194.0
REC Ltd.	130.1	129.9	126.8	127.8	128.9	131.0	132.0	133.1
Reliance Industries Ltd.	1920.1	1922.2	1875.5	1891.8	1905.9	1936.4	1952.7	1966.8
S&P CNX NIFTY	14617.8	14587.4	14405.7	14456.1	14537.0	14668.3	14718.7	14799.6
SBI Life Insurance Company Ltd.	973.1	986.0	897.3	931.2	952.1	1006.9	1040.8	1061.7
Shree Cement Ltd.	27844.2	27867.3	27359.1	27536.2	27690.2	28021.3	28198.4	28352.4
Shriram Transport Finance Co. Ltd.	1287.1	1289.7	1231.5	1251.8	1269.4	1307.3	1327.6	1345.2
Siemens Ltd.	1836.5	1852.0	1753.6	1791.6	1814.0	1874.5	1912.5	1934.9
SRF Ltd.	6836.7	6829.8	6315.1	6484.4	6660.5	7005.9	7175.2	7351.3
State Bank of India	355.4	353.6	340.3	344.2	349.8	359.2	363.1	368.7
Steel Authority of India Ltd.	130.3	130.4	118.7	122.6	126.5	134.2	138.1	142.0
Sun Pharmaceutical Industries Ltd.	683.4	671.2	608.8	625.5	654.5	700.1	716.8	745.8
Sun TV Network Ltd.	500.7	500.6	475.1	483.6	492.1	509.1	517.6	526.1
Tata Chemicals Ltd.	698.7	702.7	669.9	682.2	690.4	710.9	723.2	731.4
Tata Consultancy Services Ltd.	3095.7	3082.5	3018.6	3035.5	3065.6	3112.6	3129.5	3159.6
Tata Consumer Products Ltd.	649.1	648.4	624.8	632.4	640.7	656.7	664.3	672.6
Tata Motors Ltd.	291.5	291.3	283.3	285.9	288.7	294.1	296.7	299.5
Tata Power Co. Ltd.	102.0	101.7	97.8	99.0	100.5	103.2	104.4	105.9
Tata Steel Ltd.	1070.2	1068.5	1007.3	1027.2	1048.7	1090.0	1109.9	1131.4
Tech Mahindra Ltd.	960.4	962.3	933.1	943.4	951.9	970.8	981.1	989.6
The Ramco Cements Ltd.	974.2	973.9	950.1	958.0	966.1	982.0	989.9	998.0
Titan Company Ltd.	1428.4	1421.2	1382.1	1392.7	1410.6	1439.1	1449.7	1467.6
Torrent Pharmaceuticals Ltd.	2624.3	2581.4	2377.8	2431.4	2527.8	2677.9	2731.5	2827.9
Torrent Power Ltd.	410.5	408.3	392.9	397.3	403.9	414.9	419.3	425.9
Trent Ltd.	796.1	793.9	743.4	759.5	777.8	812.2	828.3	846.6
TVS Motor Company Ltd.	603.9	608.1	583.2	592.9	598.4	613.6	623.3	628.8
UltraTech Cement Ltd.	6380.4	6358.3	6210.9	6252.7	6316.5	6422.1	6463.9	6527.7
United Breweries Ltd.	1205.4	1203.9	1168.3	1179.7	1192.5	1216.7	1228.1	1240.9
United Spirits Ltd.	542.2	537.7	511.4	518.7	530.4	549.4	556.7	568.4
UPL Ltd.	640.7	633.5	597.6	607.1	623.9	650.3	659.8	676.6
Vedanta Ltd	264.3	263.6	243.6	250.1	257.2	270.7	277.2	284.3
Vodafone Idea Ltd.	8.4	8.4	8.1	8.2	8.3	8.5	8.6	8.7
Voltas Ltd.	971.5	976.8	930.6	947.8	959.6	988.6	1005.8	1017.6
Wipro Ltd.	490.6	490.0	471.2	477.3	483.9	496.6	502.7	509.3
Zee Entertainment Enterprises Ltd.	183.0	182.9	177.2	179.1	181.0	184.9	186.8	188.7

**Disclaimer Appendix****Analyst s holding in the Stock : Nil****Analyst s Certification:**

We analysts and the authors of this report, hereby certify that all of the views expressed in this research report accurately reflect our personal views about any and all of the subject issuer s or securities. We also certify that no part of our compensation was, is, or will be directly or indirectly related to the specific recommendation s or view s in this report. Analysts aren't registered as research analysts by FINRA and might not be an associated person of the BP Equities Pvt. Ltd. Institutional Equities.

General Disclaimer

This report has been prepared by the research department of BP EQUITIES Pvt. Ltd, is for information purposes only. This report is not construed as an offer to sell or the solicitation of an offer to buy or sell any security in any jurisdiction where such an offer or solicitation would be illegal.

BP EQUITIES Pvt. Ltd have exercised due diligence in checking the correctness and authenticity of the information contained herein, so far as it relates to current and historical information, but do not guarantee its accuracy or completeness. The opinions expressed are our current opinions as of the date appearing in the material and may be subject to change from time to time. Prospective investors are cautioned that any forward looking statement are not predictions and are subject to change without prior notice.

Recipients of this material should rely on their own investigations and take their own professional advice. BP EQUITIES Pvt. Ltd or any of its affiliates or employees shall not be in any way responsible for any loss or damage that may arise to any person from any inadvertent error in the information contained in this report. BP EQUITIES Pvt. Ltd. or any of its affiliates or employees do not provide, at any time, any express or implied warranty of any kind, regarding any matter pertaining to this report, including without limitation the implied warranties of merchantability, fitness for a particular purpose, and non-infringement. The recipients of this report should rely on their own investigations.

BP EQUITIES Pvt. Ltd and/or its affiliates and/or employees may have interests/ positions, financial or otherwise in the securities mentioned in this report. Opinions expressed are our current opinions as of the date appearing on this material only. While we endeavor to update on a reasonable basis the information discussed in this material, there may be regulatory, compliance, or other reasons that prevent us from doing so.

This report is not directed to or intended for display, downloading, printing, reproducing or for distribution to or use by any person in any locality, state and country or other jurisdiction where such distribution, publication or use would be contrary to the law or regulation or would subject to BP EQUITIES Pvt. Ltd or any of its affiliates to any registration or licensing requirement within such jurisdiction.

Corporate Office:

4th floor,
Rustom Bldg,
29, Veer Nariman Road, Fort,
Mumbai-400001
Phone- +91 22 6159 6464
Fax-+91 22 6159 6160
Website- www.bpwealth.com

Registered Office:

24/26, 1st Floor, Cama Building,
Dalal street, Fort,
Mumbai-400001
BP Equities Pvt. Ltd.
CIN No: U67120MH1997PTC107392