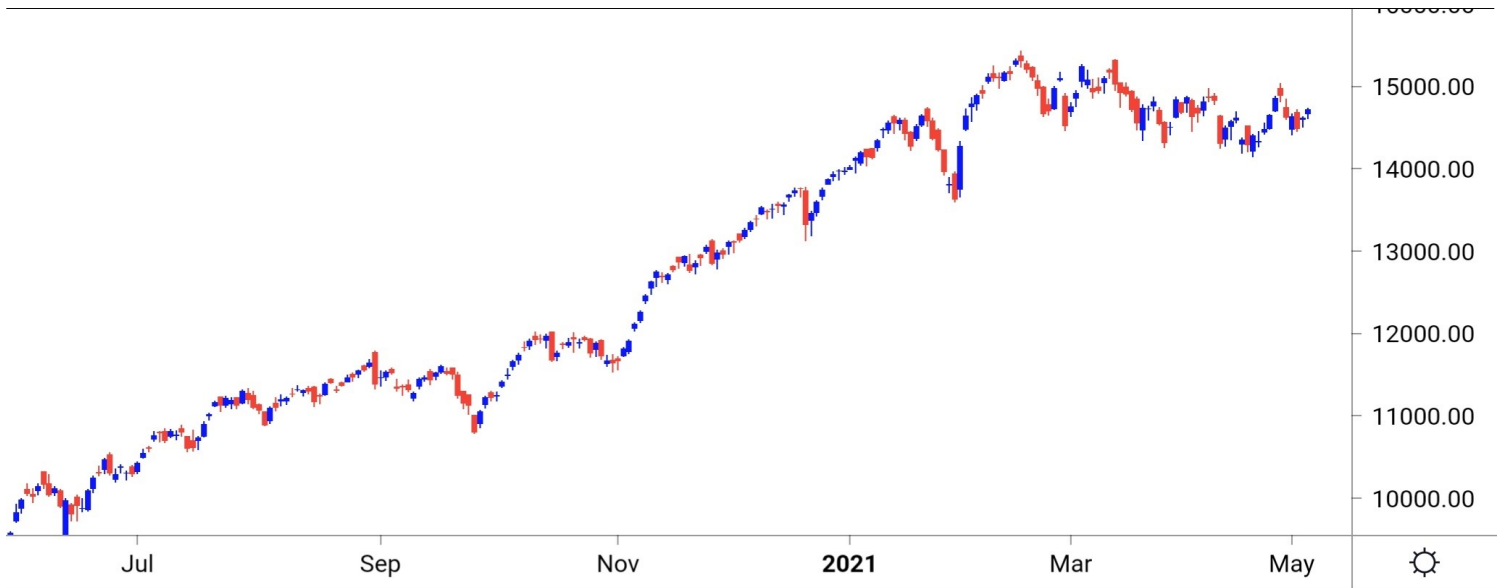


**NIFTY SPOT : IMMEDIATE SUPPORT AT 14630-14530**



Source: Falcon, BP Equities Research

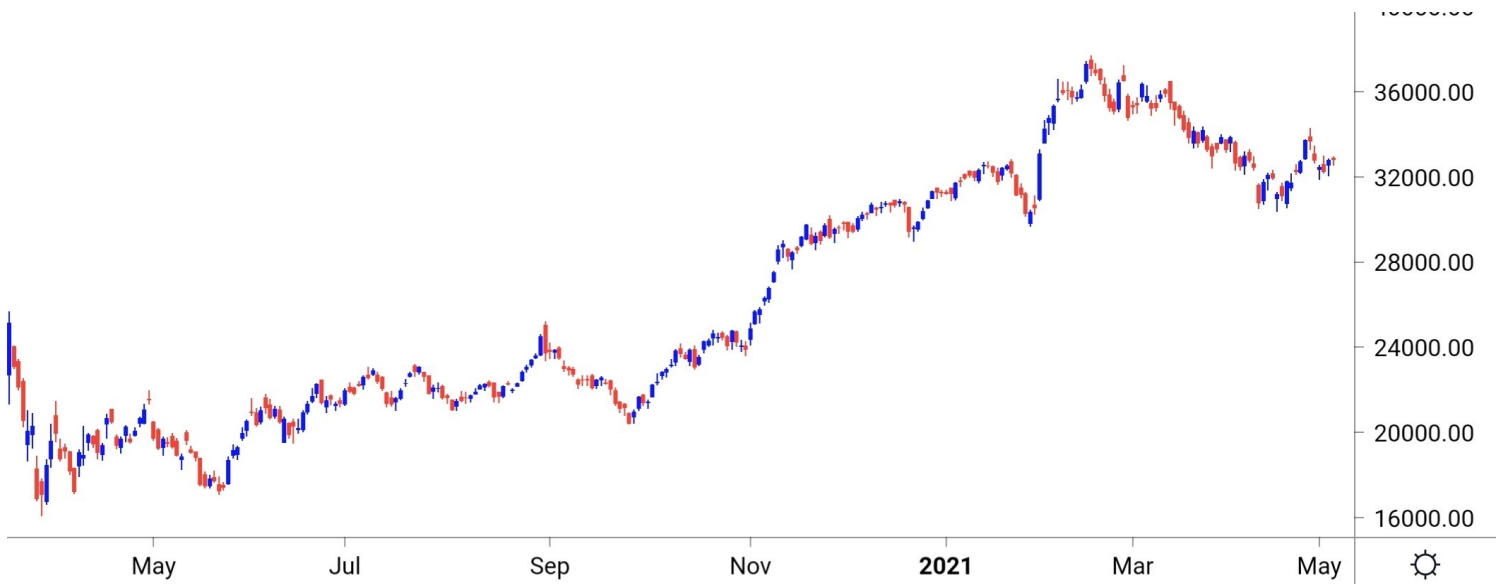
Nifty spot closed 0.73% higher at 14724. Index opened with gap up and saw minor profit booking for first half of the session, while in second half index recovered smartly from the lows to close near days high. Going ahead index has an immediate resistance around 14800-14880-15000. While on the lower side support comes at immediate support is placed at 14630- sustenance below the same will open the way for 14530-14450.

Intraday Nifty

Resistance - 14800-14880-15000

Support - 14630-14530-14450

**BANK NIFTY SPOT : IMMEDIATE SUPPORT AT 32600-32300**



Source: Falcon, BP Equities Research

Bank Nifty spot closed 0.13% higher at 32827. Banknifty opened with minor gap up and traded in narrow range throughout the day closing session on a flat note. Going forward Banknifty has an immediate resistance around 33050, sustenance above the same will open the way for 33300-33600. While on the other hand support is visible around 32600-32300-32100.

Intraday Bank Nifty

Resistance - 33050-33300-33600

Support - 32600-32300-32100

## Technical Trend

### INTRADAY TRADER'S PICKS

Sr.No.	STOCK	CLOSE	Target 1	Target 2	Stop Loss	RECOMMENDATION
1	KOTAKBANK	1788	1815	1835	1775	<b>BUY ABOVE 1795</b>
2	ULTRACEMCO	6405	6475	6535	6355	<b>BUY ABOVE 6415</b>
3	INFY	1361	1380	1395	1350	<b>BUY ABOVE 1365</b>
4	HINDUNILVR	2390	2355	2330	2405	<b>SELL BELOW 2380</b>
5	LT	1339	1320	1305	1350	<b>SELL BELOW 1335</b>

## DERIVATIVES

### INDICES SNAPSHOT

SCRIPS	CP AS ON 5/5/2021	CP AS ON 6/5/2021	Change (%)	OI AS ON 5/5/2021	OI AS ON 6/5/2021	Change (%)
BANKNIFTY	32973.65	32953.75	-0.06	1604950	1500650	-6.50
FINNIFTY	15668.85	15727.45	0.37	46160	66360	43.76
NIFTY	14679.1	14769.95	0.62	11725925	12174600	3.83

### Derivative Highlights

- ⇒ Nifty Future closed with a Premium of 55 points v/s a Premium of 76 points in the previous session.
- ⇒ Nifty Future Open Interest Increased by 3.83%. Bank Nifty Future Open Interest Decreased by 6.50%.
- ⇒ Nifty PCR - OI Increased from 0.74 to 0.91, Nifty Bank PCR - OI Decreased from 0.94 to 0.92.
- ⇒ FII Bought Rs 1222.58 crore while DII Sold Rs 632.51 crore in the Cash Segment. FII Sold Rs 251.29 crore in Index Futures, Bought Rs 1491.94 crore in index options, while in Future they Bought Rs 18.75 crore and Sold Rs 9.69 in stock options.
- ⇒ Among Index Option space, Highest Open Interest concentration was seen in 13500 & 14500 Strike price among the PE options. Where as among CE Options Highest Open Interest Concentration was seen in 16000 & 15000 Strike price.
- ⇒ Highest Open Interest Build Up among the PE options was seen in 14700 & 13500 Strike price. Among CE options highest build up was seen in 16000 & 14700 Strike price.

#### OI Concentration

PUT OPTION		CALL OPTION	
Strike Price	Open Interest	Strike Price	Open Interest
13500	1996125	16000	3503100
14500	1965075	15000	1941525
14000	1912125	15200	1752600
14700	1724475	14700	1714275
14600	1610325	15500	1597050

#### Highest Change in OI

PUT OPTION		CALL OPTION	
Strike Price	Change in OI	Strike Price	Change in OI
14700	1473825	16000	3180900
13500	1471575	14700	1274175
14500	1216200	15200	1193175
14600	1156350	15500	1106625
14000	1015725	15000	937650

#### MWPL

SCRIPS	OI %	BAN
BHEL	105%	YES
SUNTV	90%	YES
NATIONALUM	84%	NO
TATACHEM	84%	YES
CANBK	77%	NO
SAIL	74%	NO
PNB	72%	NO
CADILAHC	71%	NO
ADANI PORTS	65%	NO
COFORGE	57%	NO

# Technical Trend

## Stock Analysis

Long Build-up	Long Unwinding	Short Build-up	Short Covering
AARTIIND		ASIANPAINT	AMBUJACEM
BERGEPAIN		BANDHANBNK	BPCL
COLPAL		CIPLA	COALINDIA
CUB		EXIDEIND	GAIL
HCLTECH		HDFCLIFE	INFY
IGL		LT	MARUTI

## STATISTICS

### Highest Premium

SCRIPS	Premium %	Price change %
IDEA	1.20	-0.60
SAIL	0.86	2.57
NATIONALUM	0.73	2.77
IOC	0.70	0.43
FEDERALBNK	0.70	-1.81

### Highest Discount

SCRIPS	Premium %	Price change %
ICICIPRULI	-0.71	0.92
BANDHANBNK	-0.70	-5.30
PNB	-0.69	-2.80
KOTAKBANK	-0.03	0.99
COFORGE	0.00	17.40

### TOP 5 VOLUME GAINER FOR THE SESSION

SCRIPS	CP AS ON 5/5/2021	CP AS ON 6/5/2021	Change (%)	VOL AS ON 5/5/2021	VOL AS ON 6/5/2021	Change (%)
COFORGE	2897.4	3396.05	17.21	827	14605	1666.02
MPHASIS	1759.7	1858.25	5.60	395	2818	613.42
HEROMOTOCO	2803.2	2930.3	4.53	2064	10900	428.10
NAM-INDIA	340.75	347.25	1.91	113	514	354.87
AMARAJABAT	775.15	785.3	1.31	862	3373	291.30

### TOP 5 VOLUME LOSER FOR THE SESSION

SCRIPS	CP AS ON 5/5/2021	CP AS ON 6/5/2021	Change (%)	VOL AS ON 5/5/2021	VOL AS ON 6/5/2021	Change (%)
TATACHEM	702.65	678.5	-3.44	12651	1451	-88.53
ALKEM	2918.1	2878.15	-1.37	2918	654	-77.59
APLLTD	960.8	945.55	-1.59	2623	739	-71.83
IDEA	8.45	8.4	-0.59	1021	357	-65.03
VEDL	266.25	270.4	1.56	30966	11517	-62.81

## Technical Trend

### TOP 10 OPEN INTEREST GAINER FOR THE SESSION

SCRIPS	CP AS ON 5/5/2021	CP AS ON 6/5/2021	Change (%)	OI AS ON 5/5/2021	OI AS ON 6/5/2021	Change (%)
COFORGE	2897.4	3396.05	17.21	406125	868325	113.81
MPHISIS	1759.7	1858.25	5.60	277225	441350	59.20
FINNIFTY	15668.85	15727.45	0.37	46160	66360	43.76
BANDHANBNK	310.9	292.7	-5.85	20250000	28103400	38.78
LTI	3941.55	3836.6	-2.66	375150	448800	19.63
MINDTREE	2175.25	2261.05	3.94	1460800	1695200	16.05
DEEPAKNTR	1920.2	1900.8	-1.01	1400000	1585000	13.21
CIPLA	895.05	888.75	-0.70	15715700	17509700	11.42
AARTIIND	1712.3	1788.45	4.45	736525	819400	11.25
CADILAHC	605.9	604.7	-0.20	17619800	19151000	8.69

### TOP 10 OPEN INTEREST LOSER FOR THE SESSION

SCRIPS	CP AS ON 5/5/2021	CP AS ON 6/5/2021	Change (%)	OI AS ON 5/5/2021	OI AS ON 6/5/2021	Change (%)
TATACHEM	702.65	678.5	-3.44	11688000	10089000	-13.68
PFIZER	5486.6	5342.9	-2.62	283500	254125	-10.36
PIIND	2683.45	2670.15	-0.50	465750	419250	-9.98
SRF	6890.35	6873.85	-0.24	598375	541875	-9.44
AUBANK	948.2	961.65	1.42	3581000	3263500	-8.87
CUMMINSIND	855.7	843.6	-1.41	1020000	946200	-7.24
BANKNIFTY	32973.65	32953.75	-0.06	1604950	1500650	-6.50
LUPIN	1208.85	1204.2	-0.38	9806450	9285400	-5.31
SRTRANSFIN	1296.25	1314.85	1.43	4173600	3972800	-4.81
ASHOKLEY	112.7	114.4	1.51	30690000	29394000	-4.22

# Technical Trend

## Pivot Report– Nifty F&O

Symbol	Last Rate	Pivot	Support3	Support2	Support 1	Resist1	Resist2	Resist3
Aarti Industries Ltd.	1715.7	1706.6	1561.1	1606.6	1661.1	1761.1	1806.6	1861.1
ACC Ltd.	1888.6	1885.5	1845.3	1857.7	1873.1	1901.0	1913.4	1928.8
Adani Enterprises Ltd.	1267.5	1265.3	1194.4	1217.3	1242.4	1290.4	1313.3	1338.4
Adani Ports & Special Economic Zone Ltd.	738.1	748.5	680.2	706.4	722.3	764.4	790.6	806.5
Alembic Pharmaceuticals Ltd.	955.8	966.6	886.3	916.7	936.2	986.2	1016.6	1036.1
Alkem Laboratories Ltd.	2894.5	2887.4	2648.2	2725.6	2810.0	2971.9	3049.3	3133.7
Amara Raja Batteries Ltd.	769.4	770.7	753.8	759.9	764.6	775.4	781.5	786.2
Ambuja Cements Ltd.	311.5	310.3	303.2	305.2	308.3	313.5	315.5	318.6
Apollo Hospitals Enterprises Ltd.	3332.9	3288.7	3039.5	3107.8	3220.4	3401.2	3469.5	3582.1
Apollo Tyres Ltd.	214.6	215.7	202.3	207.1	210.9	219.4	224.2	228.0
Ashok Leyland Ltd.	112.2	111.5	107.6	108.7	110.4	113.2	114.3	116.0
Asian Paints Ltd.	2567.7	2576.9	2465.9	2506.0	2536.8	2607.7	2647.8	2678.6
Au Small Finance Bank Ltd.	942.1	934.8	874.8	892.4	917.2	959.7	977.3	1002.1
Aurobindo Pharma Ltd.	1018.1	999.6	905.2	930.5	974.3	1043.4	1068.7	1112.5
Axis Bank Ltd.	717.2	712.1	686.1	693.0	705.1	724.2	731.1	743.2
Bajaj Auto Ltd.	3843.8	3826.8	3732.6	3758.3	3801.1	3869.6	3895.3	3938.1
Bajaj Finance	5515.2	5555.9	5164.1	5308.3	5411.7	5659.3	5803.5	5906.9
Bajaj Finserv Ltd.	11114.5	11074.8	10675.4	10795.3	10954.9	11234.4	11354.3	11513.9
Balkrishna Industries Ltd.	1798.3	1793.6	1747.3	1761.2	1779.7	1812.1	1826.0	1844.5
Bandhan Bank Ltd.	311.3	314.6	294.9	302.6	306.9	318.9	326.6	330.9
BANK NIFTY	32783.7	32571.5	31487.3	31778.0	32280.8	33074.3	33365.0	33867.8
Bank of Baroda	72.4	72.1	69.1	70.0	71.2	73.3	74.2	75.4
Bata India Ltd.	1359.8	1360.7	1337.7	1345.6	1352.7	1367.8	1375.7	1382.8
Berger Paints India Ltd.	711.5	710.5	696.1	700.6	706.0	715.9	720.4	725.8
Bharat Electronics Ltd.	137.9	136.3	128.1	130.3	134.1	140.1	142.3	146.1
Bharat Forge Ltd.	639.7	635.3	607.9	615.6	627.6	647.4	655.1	667.1
Bharat Heavy Electricals Ltd.	56.8	55.9	49.2	51.1	53.9	58.7	60.6	63.4
Bharat Petroleum Corporation Ltd.	424.8	425.8	409.4	415.2	420.0	430.6	436.4	441.2
Bharti Airtel Ltd.	560.0	559.6	543.4	548.7	554.3	565.3	570.6	576.2
Biocon Ltd.	381.3	378.0	361.0	365.6	373.4	385.9	390.5	398.3
Bosch Ltd.	13343.5	13334.2	13025.1	13125.0	13234.3	13443.5	13543.4	13652.7
Britannia Industries Ltd.	3451.6	3448.9	3416.3	3426.3	3438.9	3461.6	3471.6	3484.2
Cadila Healthcare Ltd.	601.7	591.7	533.3	549.4	575.6	617.8	633.9	660.1
Canara Bank	145.6	145.3	137.2	139.8	142.7	148.2	150.8	153.7
Cholamandalam Investment and Finance Company	558.6	554.5	534.3	539.7	549.1	564.0	569.4	578.8
Cipla Ltd.	888.7	885.6	842.1	855.6	872.1	902.1	915.6	932.1
City Union Bank Ltd.	169.8	168.9	162.0	164.0	166.9	171.8	173.8	176.7
Coal India Ltd	133.2	133.4	130.3	131.4	132.3	134.3	135.4	136.3
Coforge Ltd.	2892.8	2877.8	2780.2	2807.8	2850.3	2920.3	2947.9	2990.4
Colgate Palmolive (India) Ltd.	1493.6	1494.5	1465.3	1475.3	1484.5	1503.7	1513.7	1522.9
Container Corporation of India Ltd.	568.3	570.3	550.4	557.7	563.0	575.6	582.9	588.2
Cummins India Ltd.	852.3	848.0	813.8	823.8	838.0	862.2	872.2	886.4
Dabur India Ltd.	541.0	540.2	532.5	534.8	537.9	543.3	545.6	548.7
Deepak Nitrite	1904.0	1891.3	1777.8	1811.4	1857.7	1937.6	1971.2	2017.5
Divi's Laboratories Ltd.	4035.5	4025.0	3895.9	3935.5	3985.5	4075.0	4114.6	4164.6
DLF Ltd.	248.5	249.6	239.0	242.9	245.7	252.4	256.3	259.1
Dr. Lal Pathlabs Ltd.	2836.1	2849.4	2749.7	2787.4	2811.7	2873.7	2911.4	2935.7
Dr. Reddy's Laboratories Ltd.	5161.0	5144.3	4954.6	5012.3	5086.6	5218.6	5276.3	5350.6
Eicher Motors Ltd.	2372.4	2372.1	2326.3	2341.4	2356.9	2387.6	2402.7	2418.2
Escorts Ltd.	1123.0	1123.0	1088.7	1100.2	1111.6	1134.4	1145.9	1157.3
Exide Industries Ltd.	182.8	182.5	178.7	179.9	181.3	183.9	185.1	186.5

# Technical Trend

Symbol	Last Rate	Pivot	Support3	Support2	Support 1	Resist1	Resist2	Resist3
Federal Bank Ltd.	80.1	80.0	77.0	78.0	79.0	81.0	82.0	83.0
GAIL (India) Ltd.	145.1	145.6	136.6	139.8	142.4	148.3	151.5	154.1
Glenmark Pharmaceuticals Ltd.	572.9	568.9	538.4	547.2	560.1	581.8	590.6	603.5
GMR Infrastructure Ltd.	23.8	23.5	22.4	22.7	23.2	24.1	24.4	24.9
Godrej Consumer Products Ltd.	708.1	705.1	690.5	694.4	701.2	712.0	715.9	722.7
Godrej Properties Ltd.	1223.4	1247.2	1088.5	1149.3	1186.4	1284.2	1345.0	1382.1
Granules India	352.5	345.6	312.4	321.2	336.8	361.2	370.0	385.6
Grasim Industries Ltd.	1420.9	1427.0	1349.0	1377.0	1399.0	1448.9	1476.9	1498.9
Gujarat Gas Co. Ltd.	531.7	532.3	512.1	519.1	525.4	538.6	545.6	551.9
Havell's India Ltd.	997.2	994.6	956.2	968.1	982.7	1009.2	1021.1	1035.7
HCL Technologies Ltd.	909.4	906.9	892.9	896.7	903.1	913.3	917.1	923.5
HDFC Asset Management Company Ltd.	2730.0	2731.7	2678.4	2696.7	2713.3	2748.3	2766.6	2783.2
HDFC Bank Ltd.	1402.6	1398.0	1358.4	1370.1	1386.3	1414.2	1425.9	1442.1
HDFC Life Insurance Company Ltd.	674.4	672.4	660.2	663.6	669.0	677.8	681.2	686.6
Hero MotoCorp Ltd.	2788.2	2785.4	2738.8	2753.4	2770.8	2802.8	2817.4	2834.8
Hindalco Industries Ltd.	367.1	368.4	353.6	359.0	363.0	372.4	377.8	381.8
Hindustan Petroleum Corporation Ltd.	244.8	243.4	232.9	235.9	240.4	247.9	250.9	255.4
Hindustan Unilever Ltd.	2394.7	2399.1	2298.9	2333.8	2364.2	2429.6	2464.5	2494.9
Housing Development Finance	2377.6	2378.2	2304.4	2329.2	2353.4	2402.4	2427.2	2451.4
I T C Ltd.	201.4	201.0	197.4	198.5	199.9	202.4	203.5	204.9
ICICI Bank Ltd.	602.8	597.4	570.0	577.3	590.1	610.2	617.5	630.3
ICICI Lombard General Insurance Company Ltd.	1451.7	1454.9	1406.6	1423.8	1437.7	1468.8	1486.0	1499.9
ICICI Prudential Life Insurance	559.4	561.9	525.8	538.7	549.0	572.2	585.1	595.4
IDFC First Bank Ltd.	56.2	56.3	54.4	55.1	55.6	56.8	57.5	58.0
Indiabulls Housing Finance	179.6	179.4	173.5	175.4	177.5	181.5	183.4	185.5
Indian Oil Corporation Ltd.	92.2	92.5	89.9	90.8	91.5	93.2	94.1	94.8
Indian Railway Catering & Tourism	1723.7	1740.5	1630.2	1672.6	1698.1	1766.1	1808.5	1834.0
Indraprastha Gas Ltd.	508.5	509.4	491.5	497.8	503.1	514.7	521.0	526.3
Indus Towers Ltd.	253.6	253.9	244.9	248.0	250.8	256.6	259.7	262.5
IndusInd Bank Ltd.	931.2	925.1	889.9	899.6	915.4	940.8	950.5	966.3
Info Edge (India) Ltd.	4838.8	4790.6	4531.2	4601.6	4720.2	4909.2	4979.6	5098.2
Infosys Ltd.	1341.5	1337.7	1315.5	1321.6	1331.6	1347.7	1353.8	1363.8
Interglobe Aviation	1649.4	1636.7	1541.9	1569.3	1609.3	1676.7	1704.1	1744.1
Jindal Steel & Power Ltd.	439.4	438.5	424.3	428.7	434.1	443.9	448.3	453.7
JSW Steel Ltd.	717.7	721.3	689.6	701.4	709.5	729.4	741.2	749.3
Jubilant Foodworks Limited	2796.8	2785.6	2701.2	2725.6	2761.2	2821.2	2845.6	2881.2
Kotak Mahindra Bank Ltd.	1770.8	1756.9	1679.7	1700.8	1735.8	1791.9	1813.0	1848.0
L&T Finance Holdings Ltd.	85.6	85.7	82.4	83.6	84.6	86.7	87.9	88.9
L&T Technology Services	2567.9	2582.6	2485.2	2522.6	2545.2	2605.2	2642.6	2665.2
Larsen & Toubro Infotech	3915.2	3896.8	3674.0	3742.2	3828.7	3983.3	4051.5	4138.0
Larsen & Toubro Ltd.	1338.7	1336.5	1303.4	1313.7	1326.2	1348.9	1359.2	1371.7
LIC Housing Finance Ltd.	412.6	411.3	398.7	402.5	407.5	416.3	420.1	425.1
Lupin Ltd.	1200.5	1159.5	969.9	1019.4	1110.0	1250.0	1299.5	1390.1
Mahanagar Gas Ltd	1145.7	1152.5	1079.8	1106.3	1126.0	1172.2	1198.7	1218.4
Mahindra & Mahindra Financial	153.8	154.3	145.0	148.3	151.0	157.0	160.3	163.0
Mahindra & Mahindra Ltd.	747.6	744.6	728.6	733.0	740.3	751.9	756.3	763.6
Manappuram Finance Limited	149.1	148.8	144.1	145.5	147.3	150.6	152.0	153.8
Marico Ltd.	455.3	458.2	432.8	442.2	448.8	464.8	474.2	480.8
Maruti Suzuki India Ltd.	6590.1	6557.4	6399.7	6441.4	6515.7	6631.7	6673.4	6747.7
Max Financial Services Ltd.	889.6	890.7	842.1	858.7	874.1	906.1	922.7	938.1

# Technical Trend

Symbol	Last Rate	Pivot	Support3	Support2	Support 1	Resist1	Resist2	Resist3
Motherson Sumi Systems Ltd.	219.7	217.7	204.0	207.9	213.8	223.6	227.5	233.4
MphasiS Ltd.	1747.2	1754.0	1686.2	1711.1	1729.1	1772.0	1796.9	1814.9
MRF Ltd.	78277.7	78475.9	75904.8	76827.9	77552.8	79200.8	80123.9	80848.8
Muthoot Finance	1150.8	1153.6	1122.2	1133.6	1142.2	1162.2	1173.6	1182.2
National Aluminium Co. Ltd.	66.7	67.1	64.0	65.2	65.9	67.9	69.1	69.8
Navin Fluorine International Ltd.	3477.7	3443.4	3161.3	3243.9	3360.8	3560.3	3642.9	3759.8
Nestle India Ltd.	16549.2	16538.9	16315.1	16386.3	16467.7	16620.3	16691.5	16772.9
Nippon Life India Asset Management Ltd.	339.1	339.5	328.9	332.5	335.8	342.8	346.4	349.7
NMDC Ltd.	167.4	165.3	154.4	157.3	162.3	170.3	173.2	178.2
NTPC Ltd.	103.9	104.1	99.7	101.3	102.6	105.4	107.0	108.3
Oil & Natural Gas Corporation Ltd.	111.1	111.9	106.2	108.4	109.7	113.2	115.4	116.7
Page Industries	29637.3	29565.4	28792.9	29026.4	29331.9	29870.9	30104.4	30409.9
Petronet LNG Ltd.	242.7	241.7	234.2	236.4	239.5	244.8	247.0	250.1
Pfizer Ltd.	5448.6	5401.3	5073.8	5167.2	5307.9	5542.0	5635.4	5776.1
PI Industries Limited	2672.4	2618.6	2321.0	2402.3	2537.3	2753.7	2835.0	2970.0
Pidilite Industries Ltd.	1812.7	1808.0	1777.0	1785.8	1799.2	1821.4	1830.2	1843.6
Piramal Enterprises	1720.9	1709.4	1627.2	1650.8	1685.8	1744.5	1768.1	1803.1
Power Finance Corporation Ltd.	109.2	109.1	106.5	107.4	108.3	110.0	110.9	111.8
Power Grid Corporation of India Ltd.	218.2	218.5	213.0	214.9	216.6	220.1	222.0	223.7
Punjab National Bank	37.5	37.8	35.3	36.2	36.8	38.4	39.3	39.9
PVR Limited	1110.9	1110.3	1056.7	1074.4	1092.6	1128.5	1146.2	1164.4
RBL Bank	184.2	183.8	174.0	177.1	180.7	187.3	190.4	194.0
REC Ltd.	130.1	129.9	126.8	127.8	128.9	131.0	132.0	133.1
Reliance Industries Ltd.	1920.1	1922.2	1875.5	1891.8	1905.9	1936.4	1952.7	1966.8
S&P CNX NIFTY	14617.8	14587.4	14405.7	14456.1	14537.0	14668.3	14718.7	14799.6
SBI Life Insurance Company Ltd.	973.1	986.0	897.3	931.2	952.1	1006.9	1040.8	1061.7
Shree Cement Ltd.	27844.2	27867.3	27359.1	27536.2	27690.2	28021.3	28198.4	28352.4
Shriram Transport Finance Co. Ltd.	1287.1	1289.7	1231.5	1251.8	1269.4	1307.3	1327.6	1345.2
Siemens Ltd.	1836.5	1852.0	1753.6	1791.6	1814.0	1874.5	1912.5	1934.9
SRF Ltd.	6836.7	6829.8	6315.1	6484.4	6660.5	7005.9	7175.2	7351.3
State Bank of India	355.4	353.6	340.3	344.2	349.8	359.2	363.1	368.7
Steel Authority of India Ltd.	130.3	130.4	118.7	122.6	126.5	134.2	138.1	142.0
Sun Pharmaceutical Industries Ltd.	683.4	671.2	608.8	625.5	654.5	700.1	716.8	745.8
Sun TV Network Ltd.	500.7	500.6	475.1	483.6	492.1	509.1	517.6	526.1
Tata Chemicals Ltd.	698.7	702.7	669.9	682.2	690.4	710.9	723.2	731.4
Tata Consultancy Services Ltd.	3095.7	3082.5	3018.6	3035.5	3065.6	3112.6	3129.5	3159.6
Tata Consumer Products Ltd.	649.1	648.4	624.8	632.4	640.7	656.7	664.3	672.6
Tata Motors Ltd.	291.5	291.3	283.3	285.9	288.7	294.1	296.7	299.5
Tata Power Co. Ltd.	102.0	101.7	97.8	99.0	100.5	103.2	104.4	105.9
Tata Steel Ltd.	1070.2	1068.5	1007.3	1027.2	1048.7	1090.0	1109.9	1131.4
Tech Mahindra Ltd.	960.4	962.3	933.1	943.4	951.9	970.8	981.1	989.6
The Ramco Cements Ltd.	974.2	973.9	950.1	958.0	966.1	982.0	989.9	998.0
Titan Company Ltd.	1428.4	1421.2	1382.1	1392.7	1410.6	1439.1	1449.7	1467.6
Torrent Pharmaceuticals Ltd.	2624.3	2581.4	2377.8	2431.4	2527.8	2677.9	2731.5	2827.9
Torrent Power Ltd.	410.5	408.3	392.9	397.3	403.9	414.9	419.3	425.9
Trent Ltd.	796.1	793.9	743.4	759.5	777.8	812.2	828.3	846.6
TVS Motor Company Ltd.	603.9	608.1	583.2	592.9	598.4	613.6	623.3	628.8
UltraTech Cement Ltd.	6380.4	6358.3	6210.9	6252.7	6316.5	6422.1	6463.9	6527.7
United Breweries Ltd.	1205.4	1203.9	1168.3	1179.7	1192.5	1216.7	1228.1	1240.9
United Spirits Ltd.	542.2	537.7	511.4	518.7	530.4	549.4	556.7	568.4
UPL Ltd.	640.7	633.5	597.6	607.1	623.9	650.3	659.8	676.6
Vedanta Ltd	264.3	263.6	243.6	250.1	257.2	270.7	277.2	284.3
Vodafone Idea Ltd.	8.4	8.4	8.1	8.2	8.3	8.5	8.6	8.7
Voltas Ltd.	971.5	976.8	930.6	947.8	959.6	988.6	1005.8	1017.6
Wipro Ltd.	490.6	490.0	471.2	477.3	483.9	496.6	502.7	509.3
Zee Entertainment Enterprises Ltd.	183.0	182.9	177.2	179.1	181.0	184.9	186.8	188.7



**Disclaimer Appendix****Analyst s holding in the Stock : Nil****Analyst s Certification:**

We analysts and the authors of this report, hereby certify that all of the views expressed in this research report accurately reflect our personal views about any and all of the subject issuer s or securities. We also certify that no part of our compensation was, is, or will be directly or indirectly related to the specific recommendation s or view s in this report. Analysts aren't registered as research analysts by FINRA and might not be an associated person of the BP Equities Pvt. Ltd. Institutional Equities.

**General Disclaimer**

This report has been prepared by the research department of BP EQUITIES Pvt. Ltd, is for information purposes only. This report is not construed as an offer to sell or the solicitation of an offer to buy or sell any security in any jurisdiction where such an offer or solicitation would be illegal.

BP EQUITIES Pvt. Ltd have exercised due diligence in checking the correctness and authenticity of the information contained herein, so far as it relates to current and historical information, but do not guarantee its accuracy or completeness. The opinions expressed are our current opinions as of the date appearing in the material and may be subject to change from time to time. Prospective investors are cautioned that any forward looking statement are not predictions and are subject to change without prior notice.

Recipients of this material should rely on their own investigations and take their own professional advice. BP EQUITIES Pvt. Ltd or any of its affiliates or employees shall not be in any way responsible for any loss or damage that may arise to any person from any inadvertent error in the information contained in this report. BP EQUITIES Pvt. Ltd. or any of its affiliates or employees do not provide, at any time, any express or implied warranty of any kind, regarding any matter pertaining to this report, including without limitation the implied warranties of merchantability, fitness for a particular purpose, and non-infringement. The recipients of this report should rely on their own investigations.

BP EQUITIES Pvt. Ltd and/or its affiliates and/or employees may have interests/ positions, financial or otherwise in the securities mentioned in this report. Opinions expressed are our current opinions as of the date appearing on this material only. While we endeavor to update on a reasonable basis the information discussed in this material, there may be regulatory, compliance, or other reasons that prevent us from doing so.

This report is not directed to or intended for display, downloading, printing, reproducing or for distribution to or use by any person in any locality, state and country or other jurisdiction where such distribution, publication or use would be contrary to the law or regulation or would subject to BP EQUITIES Pvt. Ltd or any of its affiliates to any registration or licensing requirement within such jurisdiction.

**Corporate Office:**

4th floor,  
Rustom Bldg,  
29, Veer Nariman Road, Fort,  
Mumbai-400001  
Phone- +91 22 6159 6464  
Fax-+91 22 6159 6160  
Website- [www.bpwealth.com](http://www.bpwealth.com)

**Registered Office:**

24/26, 1st Floor, Cama Building,  
Dalal street, Fort,  
Mumbai-400001

BP Equities Pvt. Ltd.

CIN No: U67120MH1997PTC107392