





NIFTY SPOT : IMMEDIATE SUPPORT AT 15300-15180

NIFTY[N59901] 15211.35, 15469.65, 15145.45, 15435.65, 19437780000, 1.72%
 Price Avg (E, 21)



Source: IRIS, BP Equities Research

Technical View

Index started the week with a positive note and remained strong throughout the week. After breakout from down sloping channel last week index continued its up move and made a new all-time high which is a bullish signal for medium term trend. RSI has earlier formed positive reversal and now has surpassed down sloping trend line and forming higher high and higher low which is bullish signal for medium term trend.

Going ahead index has immediate support at 15300-15180, till it maintains above this zone it is expected to continue its up move towards 15550-15670.

Key Data

% Change (D)	0.64
% Change (W)	1.72
21 SMA (D)	14934
21 SMA (W)	14715
100 SMA (D)	14721
100 SMA (W)	12018
MACD (D)	175.14
MACD (W)	530.54
RSI (D)	66.20
RSI (W)	65.98

NIFTY : 15436

SUP :15300-15180-15130

RES : 15550-15670-15800

HANSRAJ MODI,CMT,HEAD TECHNICAL & DERIVATIVE
 hansrajmodi@bpwealth.com

ROHAN SHAH, TECHNICAL ANALYST
 rohanshah@bpwealth.com

AAKASH CHAUHAN, DERIVATIVE ANALYST
 aakash@bpwealth.com

RICHES VANARA, RESEARCH ASSOCIATE
 riches@bpwealth.com



BANKNIFTY : IMMEDIATE SUPPORT AT 34800-34280

BANKNIFTY[N59906] 34869.30, 35436.65, 34410.40, 35141.45, 19437780000, 1.54%
 Price Avg (E, 21)



Source: IRIS, BP Equities Research

Technical View

Index started the week with a positive note and remained sideways positive throughout the week. Index has consolidated around 21 EMA for past couple of weeks and now has surpassed down sloping trend line which is a bullish signal for medium term trend. RSI has earlier formed positive reversal and is now forming higher high and higher low which is a bullish signal and compliments the bullish view of price.

Going ahead index has immediate support at 34800-34280, till it maintains above this zone it is expected to continue its up move towards 35800-36240.

Key Data

% Change (D)	0.13
% Change (W)	1.54
21 SMA (D)	33513
21 SMA (W)	33537
100 SMA (D)	33601
100 SMA (W)	27817
MACD (D)	556.40
MACD (W)	1272.87
RSI (D)	63.80
RSI (W)	63.20

BANKNIFTY : 35140

SUP : 34800-34280-33700

RES : 35250-35800-36240



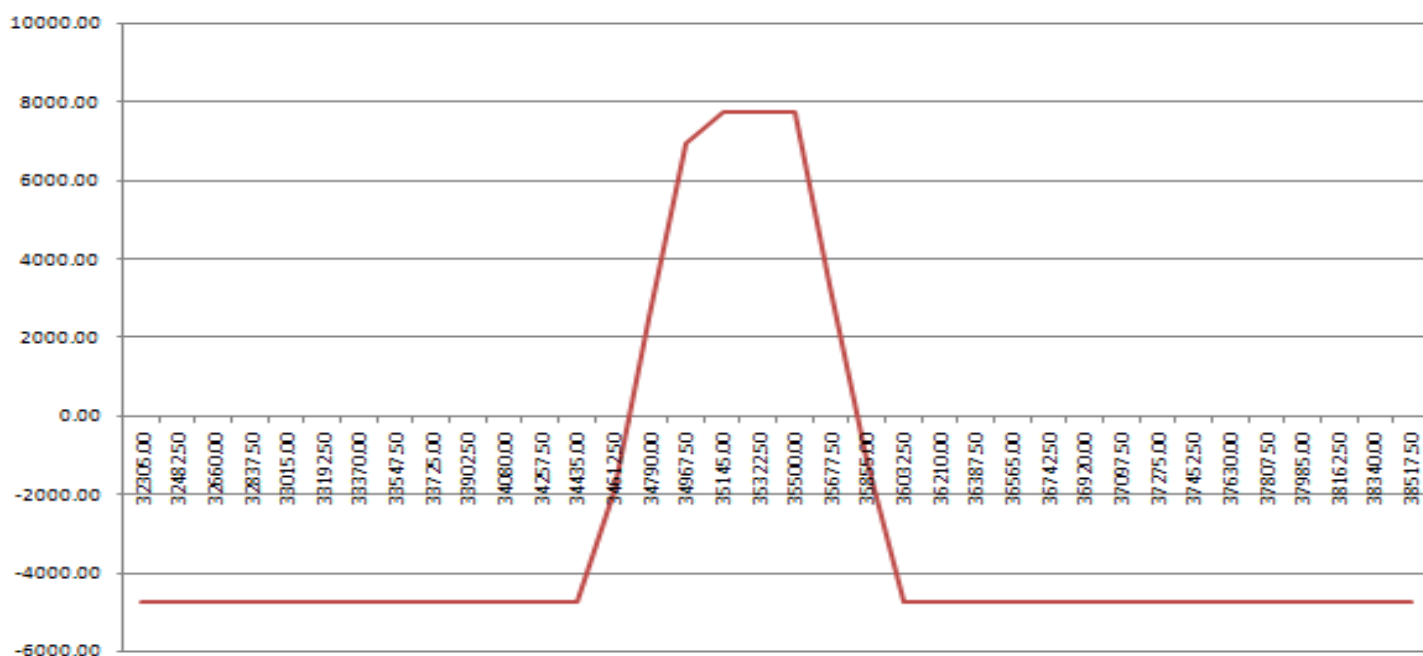
BANKNIFTY OPTION STRATEGY

Bank nifty closed 1.54% higher this week @ 35141. We have seen call addition in 35500, 36000, 36500 call options as call writers are active in these strike prices and we have seen major put addition in 35000, 34500, 34000 put options as put writers are writing put options. Highest Put option volume is visible in 35000 PE which will act as a good support and highest volume on call side is visible in 35500 CE. Highest OI concentration is visible in 35000 PE which will act as a support and 35500 CE which will act as a resistance. Bank nifty max pain is at 35000.

OPTION STRATEGY: -

STRATEGY : SELL 35500 CE @ 335, BUY 36000 CE @ 175 AND SELL 35000 PE @ 315, BUY 34500 PE @ 165 (03JUNE21 EXPIRY)
 MAX PROFIT : Rs.7750
 MAX LOSS : Rs.4750
 LOT SIZE : 25 Shares
 BREAK EVEN POINT : 34690 - 35810
 MARGIN REQUIRED : Rs.80000 APPROX

OPTION PAYOFF: -



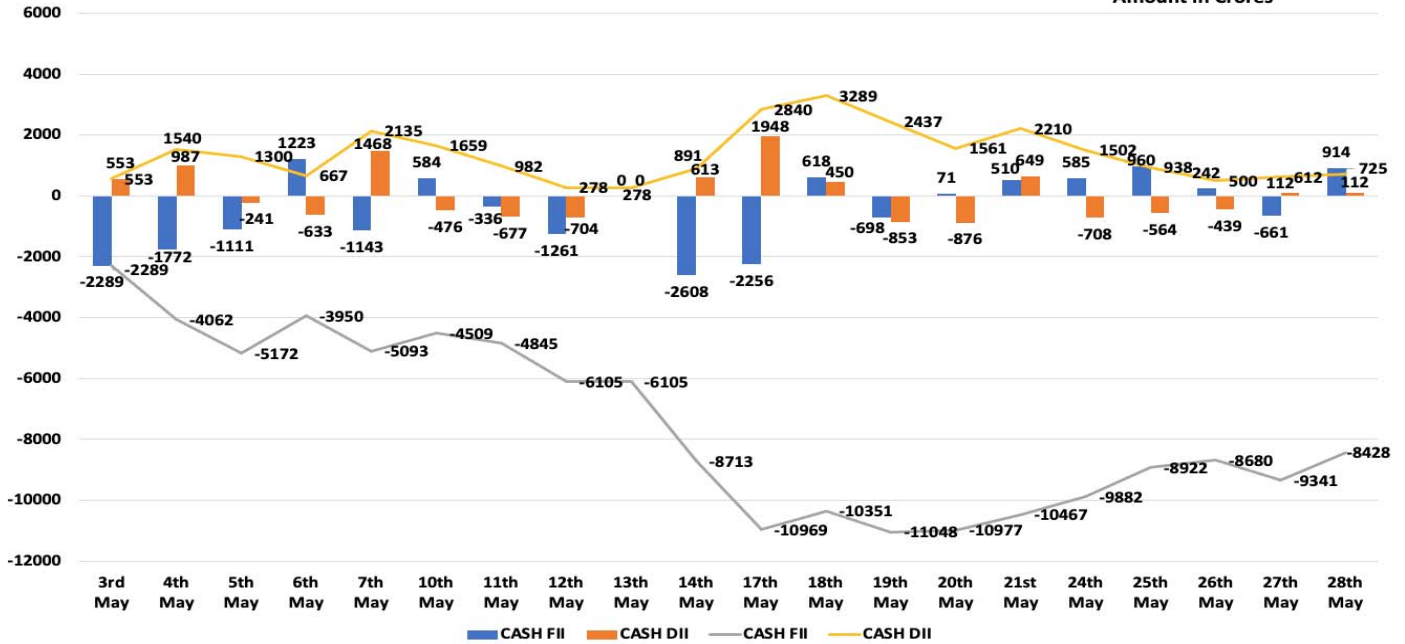


FII DII DATA

FII DII CASH DATA

FII/DII CASH STATS DAILY AND CUMULATIVE

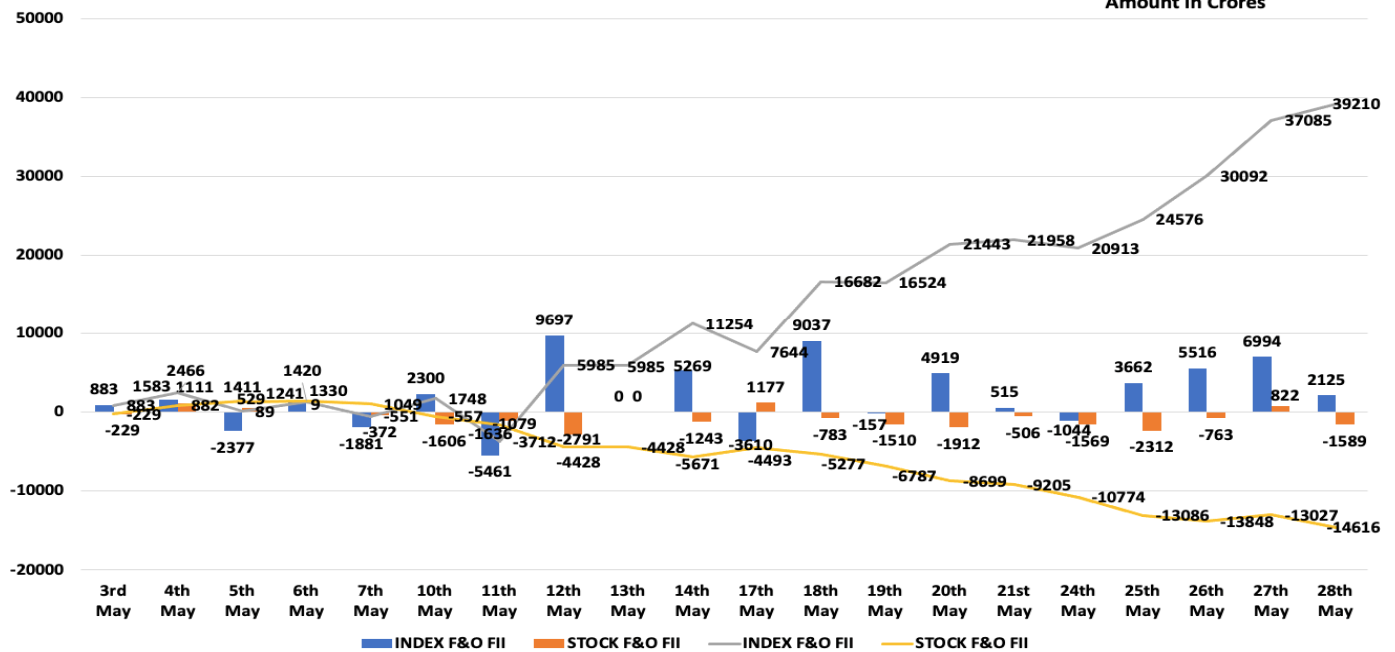
Amount in Crores



FII F&O DATA

FII F&O STATS DAILY AND CUMULATIVE

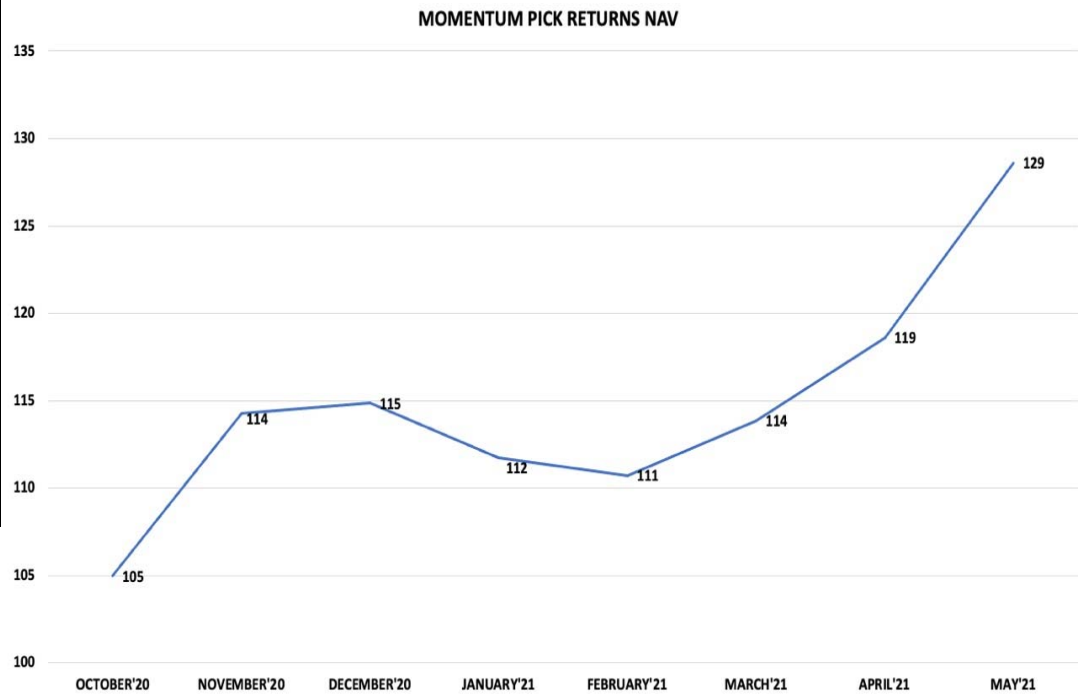
Amount in Crores





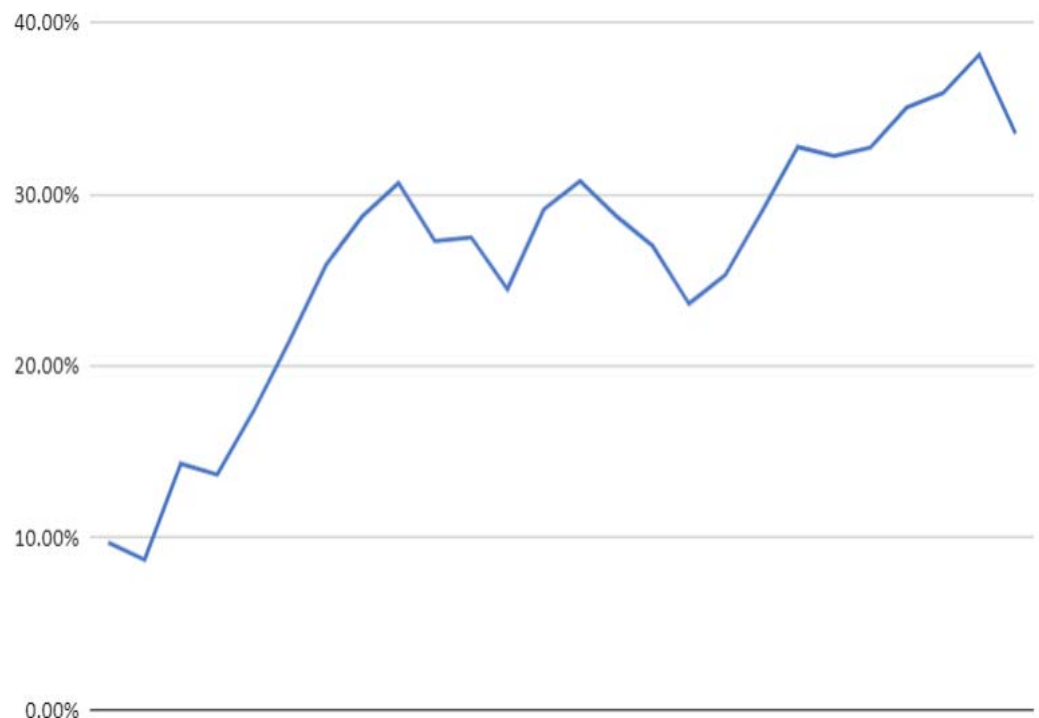
MOMENTUM PICK PERFORMANCE

TOTAL CALLS	55
SUCCESS	31
FAIL	19
OPEN	5
SUCCESS RATIO	62%
% GAIN	29%
AVG GAIN	9.4%
AVG LOSS	5.6%
AVG MONTHLY GAIN	3.7%



OPTION STRATEGY PERFORMANCE

TOTAL CALLS	26
SUCCESS	17
FAIL	9
OPEN	0
SUCCESS RATIO	65%
% GAIN	34%
MAX GAIN	9737
MAX LOSS	-4586
AVG GAIN	3165
AVG LOSS	-2252





MOMENTUM PICK PERFORMANCE

DATE	ACTION	STOCK	EP	SL	TGT	CMP	STATUS	%GAIN
19-Oct	BUY	KANSAINER	502	466	580	572	TARGET ACHIEVED	12%
20-Oct	BUY	GODREJCP	691	669	742	845	FAIL	(3%)
22-Oct	BUY	VOLTAS	713	675	790	1000	TARGET ACHIEVED	8%
26-Oct	BUY	ASHOKLEY	81.8	74	98	125	TARGET ACHIEVED	13%
26-Oct	BUY	CEATLTD	1122	1033	1300	1319	TARGET ACHIEVED	5%
28-Oct	BUY	HDFCLIFE	591	572	630	669	TARGET ACHIEVED	5%
02-Nov	BUY	KPRMILL	739	683	850	1595	TARGET ACHIEVED	8%
02-Nov	BUY	TATACONSUM	493	465	560	650	TARGET ACHIEVED	14%
02-Nov	BUY	COLPAL	1516	1434	1700	1711	PROFIT BOOKED @ 1598	5%
09 Nov	BUY	ESCORTS	1285	1200	1460	1162	TARGET ACHIEVED	6%
09 Nov	BUY	CROMPTON	309	289	350	394	FAIL	(7%)
12 Nov	BUY	JUBILANT	700	674	770	882	TARGET ACHIEVED	8%
17 Nov	BUY	AUROPHARMA	852	790	989	1022	PROFIT BOOKED @910	7%
17 Nov	BUY	HINDALCO	209	194	240	388	TARGET ACHIEVED	10%
23 Nov	BUY	CCL	260	242	300	365	PROFIT BOOKED @268	3%
23 Nov	BUY	ENDURANCE	1084	1020	1260	1491	TARGET ACHIEVED	13%
23 Nov	BUY	POLYCAB	958	890	1100	1675	TARGET ACHIEVED	7%
03 Dec	BUY	CESC	620	585	690	667	FAIL	(6%)
07 Dec	BUY	BHARATFORG	552	512	630	678	FAIL	(7%)
07 Dec	BUY	MARICO	395	367	450	471	PROFIT BOOKED @ 422	7%
09 Dec	BUY	OFSS	3118	2960	3405	3525	TARGET ACHIEVED	8%
14 Dec	BUY	GLENMARK	527	490	615	608	FAIL	(7%)
14 Dec	BUY	ECLERX	809	757	936	1236	FAIL	(7%)
21-Dec	BUY	MPHASIS	1373	1280	1580	1936	TARGET ACHIEVED	12%
21-Dec	BUY	RELAXO	787	740	886	1121	TARGET ACHIEVED	9%
28-Dec	BUY	SBILIFE	874	820	985	977	PROFIT BOOKED @ 953	9%
28-Dec	BUY	LALPATHLAB	2272	2120	2630	2806	PROFIT BOOKED @ 2440	7%
04-Jan	BUY	BAJAJ-AUTO	3481	3320	3834	4200	TARGET ACHIEVED	7%
04-Jan	BUY	METROPOLIS	2015	1880	2320	2524	TARGET ACHIEVED	12%
11-Jan	BUY	CRISIL	1956	1835	2210	1923	FAIL	(6%)
11-Jan	BUY	PIIND	2340	2200	2680	2606	FAIL	(6%)
18-Jan	BUY	CESC	692	640	790	667	FAIL	(8%)
18-Jan	BUY	PEL	1625	1522	1835	1786	FAIL	(7%)
25-Jan	BUY	GODREJCP	790	745	880	845	FAIL	(6%)



DATE	ACTION	STOCK	EP	SL	TGT	CMP	STATUS	%GAIN
25-Jan	BUY	FORTIS	165	152	198	230	TARGET ACHIEVED	20%
28-Jan	BUY	AJANTA PHARMA	1755	1680	1980	1969	EXIT	(0.85%)
15-Feb	BUY	CDSL	538	496	630	972	TARGET ACHIEVED	17%
15-Feb	BUY	MGL	1141	1045	1350	1175	PARTIAL BOOKED @ 1251	10%
22-Feb	BUY	HINDPETRO	244-233	224	289	281	FAIL	(6%)
22-Feb	BUY	PETRONET	252	233	302	241	FAIL	(8%)
08-March	BUY	CUB	173.4	160	210	174	FAIL	(8%)
08-March	BUY	SBILIFE	904	940	1040	977	PARTIAL BOOKED @ 983	9%
15-March	BUY	AJANTPHARM	1833	1720	2150	1969	FAIL	(6%)
15-March	BUY	COFORGE	2722	2516	3225	3543	TARGET ACHIEVED	18%
22-March	BUY	AARTIDRUGS	750-720	675	905	723	PARTIAL BOOKED @ 820	12%
22-March	BUY	ITC	223-215	205	270	213	FAIL	(6%)
30-March	BUY	ECLERX	1029	960	1230	1236	TARGET ACHIEVED	18%
30-March	BUY	LALPATHLAB	2571-2500	2380	3000	2806	TARGET ACHIEVED	16%
05-April	BUY	FLUOROCHEM	611-590	559	720	810	TARGET ACHIEVED	18%
13-April	BUY	GLENMARK	505-490	463	635	608	TARGET ACHIEVED	26%
16-April	BUY	STAR	885	813	1070	795	FAIL	(9%)
26-April	BUY	TRENT	770	715	975	827	OPEN	-
27-April	BUY	OFSS	3395	3170	3920	3525	PARTIAL BOOKED @ 3700	9%
10-May	BUY	NAM INDIA	351	325	420	349	OPEN	-
17-May	BUY	VOLTAS	1000	940	1200	1000	OPEN	-
24-May	BUY	ICICIGI	1527	1420	1810	1484	OPEN	-
28-May	BUY	METROPOLIS	2460-2400	2280	2950	2524	OPEN	-

**Technical Research Desk****Tel: +91 22 61596406/11****Institutional Sales Desk****Tel: +91 22 61596403/04/05****Disclaimer Appendix****Analysts holding in the Stock : Nil****Analysts Certification:**

We analysts and the authors of this report, hereby certify that all of the views expressed in this research report accurately reflect our personal views about any and all of the subject issuers or securities. We also certify that no part of our compensation was, is, or will be directly or indirectly related to the specific recommendations or views in this report. Analysts aren't registered as research analysts by FINRA and might not be an associated person of the BP Equities Pvt. Ltd. Institutional Equities.

General Disclaimer

This report has been prepared by the research department of BP EQUITIES Pvt. Ltd, is for information purposes only. This report is not construed as an offer to sell or the solicitation of an offer to buy or sell any security in any jurisdiction where such an offer or solicitation would be illegal.

BP EQUITIES Pvt. Ltd have exercised due diligence in checking the correctness and authenticity of the information contained herein, so far as it relates to current and historical information, but do not guarantee its accuracy or completeness. The opinions expressed are our current opinions as of the date appearing in the material and may be subject to change from time to time. Prospective investors are cautioned that any forward looking statement are not predictions and are subject to change without prior notice.

Recipients of this material should rely on their own investigations and take their own professional advice. BP EQUITIES Pvt. Ltd or any of its affiliates or employees shall not be in any way responsible for any loss or damage that may arise to any person from any inadvertent error in the information contained in this report. BP EQUITIES Pvt. Ltd. or any of its affiliates or employees do not provide, at any time, any express or implied warranty of any kind, regarding any matter pertaining to this report, including without limitation the implied warranties of merchantability, fitness for a particular purpose, and non-infringement. The recipients of this report should rely on their own investigations.

BP EQUITIES Pvt. Ltd and/or its affiliates and/or employees may have interests/ positions, financial or otherwise in the securities mentioned in this report. Opinions expressed are our current opinions as of the date appearing on this material only. While we endeavor to update on a reasonable basis the information discussed in this material, there may be regulatory, compliance, or other reasons that prevent us from doing so.

This report is not directed to or intended for display, downloading, printing, reproducing or for distribution to or use by any person in any locality, state and country or other jurisdiction where such distribution, publication or use would be contrary to the law or regulation or would subject to BP EQUITIES Pvt. Ltd or any of its affiliates to any registration or licensing requirement within such jurisdiction.

Corporate Office:**4th floor, Rustom Bldg,****29, Veer Nariman Road, Fort, Mumbai-400001****Phone- +91 22 6159 6464 Fax-+91 22 6159 6160****Website- www.bpwealth.com****Registered Office:****24/26, 1st Floor, Cama Building,****Dalal street, Fort,****Mumbai-400001****BP Equities Pvt. Ltd.****CIN No: U67120MH1997PTC107392**