

NIFTY SPOT : IMMEDIATE SUPPORT AT 15650-15570



Source – Falcon, BP Equities Research

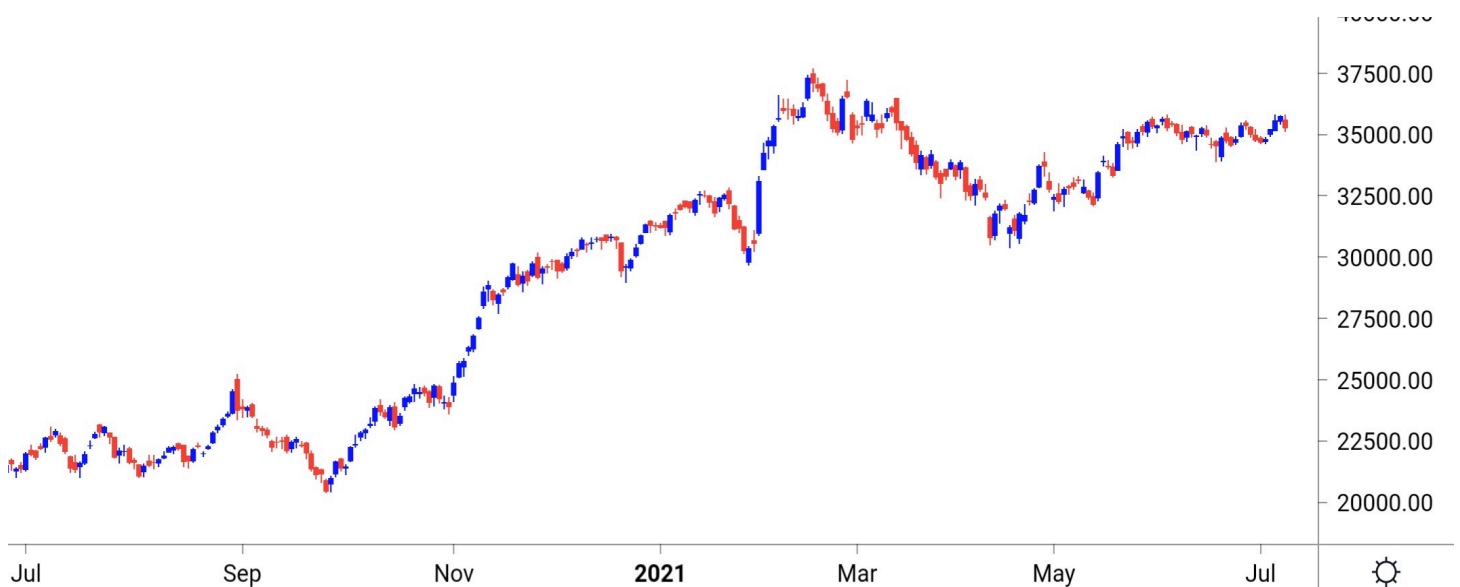
Index opened with gap down and remained under pressure throughout the day closing session near days low in loss. Index has closed around Upsloping trendline, failure to hold this support would attract further selling. Going ahead index has an immediate support around 15650-15570-15500. While on the higher side resistance is seen at 15800-15880-15950.

Intraday Nifty

Resistance – 15800-15880-15950

Support - 15650-15570-15500

BANKNIFTY SPOT : IMMEDIATE SUPPORT AT 35000-34750



Source – Falcon, BP Equities Research

Banknifty opened with gap down and remained under pressure throughout the day closing session near the days lows with decent loss. Going ahead Banknifty has an immediate resistance placed around 35500-35700-36000. While the support is seen at 35000-34750-34400.

Intraday Banknifty

Resistance – 35500-35700-36000

Support - 35000-34750-34400

INTRADAY TRADER'S PICK

SR NO.	STOCK	CLOSE	TARGET 1	TARGET 2	STOP LOSS	RECOMMENDATION
1	BANDHANBNK	315	311	307	318	SELL
2	JINDALSTEL	387	383	378	391	SELL
3	TATAMOTORS	305	301	297	308	SELL
4	COFORGE	4415	4460	4505	4380	BUY
5	TRENT	925	935	945	915	BUY

MWPL

SCRIPS	OI %	BAN
INDIABULLS HSG FIN LTD	84%	YES
NATIONAL ALUMINIUM CO LTD	92%	YES
NMDC LTD.	109%	YES
PUNJAB NATIONAL BANK	89%	YES
STEEL AUTHORITY OF INDIA	89%	YES
VODAFONE IDEA LIMITED	94%	NO
TATA MOTORS LIMITED	91%	NO
SUN TV NETWORK LIMITED	90%	NO
CADILA HEALTHCARE LIMITED	89%	NO
CANARA BANK	84%	NO

DERIVATIVES

INDICES SNAPSHOT

SCRIPS	CP AS ON 07/07/2021	CP AS ON 08/07/2021	CHA NGE (%)	OI AS ON 07/07/2021	OI AS ON 08/07/2021	CHA NGE (%)
BANKNIFTY	35865.6	35411	-1.27	2090900	2181000	4.31
FINNIFTY	16897.6	16710.55	-1.11	13280	12040	-9.34
NIFTY	15886.4	15735.4	-0.95	10043000	10576900	5.32

DERIVATIVES HIGHLIGHTS

- Nifty Future closed with a Premium of 3 points v/s a Premium of 18 points in the previous session.
- Nifty Future Open Interest Increased by 5.32%. Bank Nifty Future Open Interest Increased by 4.31%.
- Nifty PCR - OI Decreased from 1.12 to 0.66, Nifty Bank PCR - OI Decreased from 1.36 to 0.71.
- FII Sold Rs 554.92 crore while DII Sold Rs 949.18 crore in the Cash Segment. FII Sold Rs 2937.52 crore in Index Futures, Bought Rs 4687.41 crore in index options, while in Stock Future they Sold Rs 1085.68 crore and Sold Rs 404.77 in stock options.
- Among Index Option space, Highest Open Interest concentration was seen in 15000 & 15500 Strike price among the PE options. Where as among CE Options Highest Open Interest Concentration was seen in 15800 & 16500 Strike price.
- Highest Open Interest Build Up among the PE options was seen in 15500 & 15600 Strike price. Among CE options highest build up was seen in 15800 & 16500 Strike price.

OI CONCENTRATION

PUT OPTION		CALL OPTION	
STRIKE PRICE	OPEN INT.	STRIKE PRICE	OPEN INT.
15000	2121675	15800	3461100
15500	1865025	16500	3278850
15700	1670850	16000	2935800
15800	1617450	15900	2843100
15600	1563450	16100	1938825

HIGHEST CHANGE IN OI

PUT OPTION		CALL OPTION	
STRIKE PRICE	CHANGE IN OI	STRIKE PRICE	CHANGE IN OI
15500	1196700	15800	2786625
15600	1006050	16500	2428800
15700	960900	15900	1849875
15000	936075	16000	1579200
15300	673275	17000	1497000

STOCK ANALYSIS

LONG BUILD UP	LONG UNWINDING	SHORT BUILD UP	SHORT COVERING
TRENT	ACC	APLLTD	ASHOKLEY
SIEMENS	APOLLOHOSP	BALKRISIND	COLPAL
SBILIFE	APOLLOTYRE	BANDHANBNK	GMRINFRA
NTPC	AXISBANK	BATAINDIA	HAVELLS
NAUKRI	BANKBARODA	BPCL	HDFCAMC

STATISTICS

HIGHEST PREMIUM

SCRIPS	PREMIUM %	PRICE CHANGE %
NMDC	1.56	-0.68
MANAPPURAM	0.52	-1.58
AARTIIND	0.50	-1.70
NAM-INDIA	0.49	0.52
CONCOR	0.48	-1.57

HIGHEST DISCOUNT

SCRIPS	PREMIUM %	PRICE CHANGE %
TECHM	-2.66	1.36
APLLTD	-1.16	-0.01
APOLLOTYRE	-1.12	-1.82
COFORGE	-1.12	5.17
UPL	-0.93	-0.35

TOP 5 VOLUME GAINER FOR THE SESSION

SCRIPS	CP AS ON 07/07/2021	CP AS ON 08/07/2021	CHANGE (%)	VOL AS ON 07/07/2021	VOL AS ON 08/07/2021	CHANGE (%)
TRENT	913.1	925.05	1.31	367	2428	561.58
NAM-INDIA	377.25	379.45	0.58	452	2625	480.75
IGL	564.2	579.5	2.71	1178	6138	421.05
IDEA	8.95	8.8	-1.68	502	2059	310.16
ABFRL	214.5	215.2	0.33	322	1301	304.04

TOP 5 VOLUME LOSER FOR THE SESSION

SCRIPS	CP AS ON 07/07/2021	CP AS ON 08/07/2021	CHA NGE (%)	VOL AS ON 07/07/2021	VOL AS ON 08/07/2021	CHA NGE (%)
SAIL	128.8	123.1	-4.43	10620	1056	-90.06
NATIONALUM	85.05	83.25	-2.12	306	76	-75.16
GODREJPROP	1490	1458.95	-2.08	4006	1306	-67.40
NMDC	170.6	169.7	-0.53	1271	430	-66.17
INDHOTEL	153.2	150.65	-1.66	4209	1533	-63.58

TOP 10 OPEN INTEREST GAINER FOR THE SESSION

SCRIPS	CP AS ON 07/07/2021	CP AS ON 08/07/2021	CHA NGE (%)	OI AS ON 07/07/2021	OI AS ON 08/07/2021	CHA NGE (%)
TRENT	913.1	925.05	1.31	863475	1036025	19.98
COFORGE	4214.3	4414.5	4.75	502800	590200	17.38
TATAMOTORS	316.6	305.05	-3.65	118625550	136891200	15.40
NAM-INDIA	377.25	379.45	0.58	2161600	2435200	12.66
MPHASIS	2166.05	2176.95	0.50	510900	570050	11.58
GRANULES	344.15	343.2	-0.28	13619850	15000900	10.14
BANDHANBNK	320.95	314.5	-2.01	16423200	17584200	7.07
AARTIIND	866.6	852.6	-1.62	3720450	3955050	6.31
CONCOR	695.3	685.05	-1.47	6586482	6994425	6.19
TCS	3274.05	3261.1	-0.40	8899500	9446100	6.14

TOP 10 OPEN INTEREST LOSER FOR THE SESSION

SCRIPS	CP AS ON 07/07/2021	CP AS ON 08/07/2021	CHA NGE (%)	OI AS ON 07/07/2021	OI AS ON 08/07/2021	CHA NGE (%)
HINDALCO	394.65	383.65	-2.79	30461200	26356850	-13.47
INDUSTOWER	235.55	240.2	1.97	15453200	13938400	-9.80
FINNIFTY	16897.6	16710.55	-1.11	13280	12040	-9.34
SRTRANSFIN	1448.35	1433.15	-1.05	4148800	3824000	-7.83
HINDPETRO	307.75	284.5	-7.55	19699200	18270900	-7.25
RBLBANK	224.55	216.25	-3.70	25427200	23858300	-6.17
NAVINFLUOR	3865.4	3851.55	-0.36	411525	387450	-5.85
BHARATFORG	805.85	808.5	0.33	6030000	5683500	-5.75
SAIL	128.8	123.1	-4.43	187292500	177127500	-5.43
ASHOKLEY	124.05	124.2	0.12	42228000	39942000	-5.41

PIVOT REPORT NIFTY F&O

SYMBOL	LTP	PIVOT	SUP3	SUP2	SUP1	RES1	RES2	RES3
Aarti Industries Ltd.	848.4	853.0	808.1	824.6	836.5	864.9	881.4	893.3
ACC Ltd.	2029.5	2036.3	1979.9	2000.9	2015.2	2050.6	2071.6	2085.9
Adani Enterprises Ltd.	1425.9	1427.6	1376.9	1394.4	1410.1	1443.3	1460.8	1476.5
Adani Ports & Special Economic Zone Ltd.	711.7	716.3	685.6	697.4	704.5	723.4	735.2	742.3
Alembic Pharmaceuticals Ltd.	986.1	988.2	958.2	968.9	977.5	996.8	1007.5	1016.1
Alkem Laboratories Ltd.	3324.9	3318.3	3261.8	3278.5	3301.7	3341.5	3358.2	3381.4
Amara Raja Batteries Ltd.	738.5	739.7	726.5	731.3	734.9	743.3	748.1	751.7
Ambuja Cements Ltd.	360.8	359.5	351.0	353.4	357.1	363.2	365.6	369.3
Apollo Hospitals Enterprises Ltd.	3671.4	3682.8	3582.6	3619.8	3645.6	3708.6	3745.8	3771.6
Apollo Tyres Ltd.	226.9	227.9	218.9	222.3	224.6	230.2	233.6	235.9
Ashok Leyland Ltd.	124.0	124.0	119.4	120.9	122.5	125.5	127.0	128.6
Asian Paints Ltd.	3028.3	3035.4	2971.5	2995.2	3011.7	3051.9	3075.6	3092.1
Au Small Finance Bank Ltd.	1141.4	1135.5	1076.0	1093.9	1117.6	1159.3	1177.2	1200.9
Aurobindo Pharma Ltd.	951.8	957.5	915.4	931.4	941.6	967.7	983.7	993.9
Axis Bank Ltd.	754.4	757.8	732.9	742.3	748.4	763.8	773.2	779.3
Bajaj Auto Ltd.	4077.3	4075.4	3944.6	3987.6	4032.4	4120.3	4163.3	4208.1
Bajaj Finance	6117.8	6139.7	5918.0	5999.2	6058.5	6199.0	6280.2	6339.5
Bajaj Finserv Ltd.	12333.9	12341.3	12022.6	12131.3	12232.6	12442.6	12551.3	12652.6
Balkrishna Industries Ltd.	2292.6	2290.4	2240.6	2256.5	2274.5	2308.5	2324.4	2342.4
Bandhan Bank Ltd.	314.1	317.5	297.5	305.3	309.7	321.9	329.7	334.1
BANK NIFTY	35274.1	35406.6	34325.7	34730.2	35002.1	35678.5	36083.0	36354.9
Bank of Baroda	83.5	84.4	77.7	80.2	81.9	86.1	88.6	90.3
Bata India Ltd.	1575.5	1574.2	1531.3	1545.2	1560.3	1589.3	1603.2	1618.3
Berger Paints India Ltd.	841.7	845.1	804.2	819.0	830.3	856.4	871.2	882.5
Bharat Electronics Ltd.	180.7	182.4	169.1	174.1	177.4	185.7	190.7	194.0
Bharat Forge Ltd.	809.0	809.1	783.1	791.8	800.4	817.7	826.4	835.0
Bharat Heavy Electricals Ltd.	67.1	67.5	63.3	64.8	65.9	68.6	70.1	71.2
Bharat Petroleum Corporation Ltd.	458.2	460.1	445.9	451.2	454.7	463.6	468.9	472.4
Bharti Airtel Ltd.	525.3	527.2	512.4	518.0	521.6	530.9	536.5	540.1
Biocon Ltd.	389.4	390.0	379.9	383.5	386.4	392.9	396.5	399.4
Bosch Ltd.	15273.3	15351.2	14682.9	14931.6	15102.5	15522.1	15770.8	15941.7
Britannia Industries Ltd.	3491.4	3496.9	3415.2	3444.2	3467.8	3520.5	3549.5	3573.1
Cadila Healthcare Ltd.	632.7	634.0	614.1	621.2	626.9	639.7	646.8	652.5
Canara Bank	151.8	152.9	143.8	147.2	149.5	155.2	158.6	160.9
Cholamandalam Investment and Finance Company	514.4	516.7	492.8	501.6	508.0	523.1	531.9	538.3
Cipla Ltd.	950.7	954.5	917.8	931.3	941.0	964.2	977.7	987.4
City Union Bank Ltd.	162.5	163.3	155.2	158.2	160.3	165.4	168.4	170.5
Coal India Ltd	146.3	146.6	142.1	143.7	145.0	147.8	149.4	150.7
Coforge Ltd.	4464.6	4399.9	3974.5	4094.8	4279.7	4584.8	4705.1	4890.0
Colgate Palmolive (India) Ltd.	1740.5	1747.5	1672.0	1699.5	1720.0	1768.0	1795.5	1816.0
Container Corporation of India Ltd.	681.8	685.9	653.8	665.9	673.8	693.8	705.9	713.8
Cummins India Ltd.	867.5	872.0	831.5	846.5	857.0	882.5	897.5	908.0
Dabur India Ltd.	596.1	595.4	583.7	587.4	591.7	599.7	603.4	607.7
Deepak Nitrite	1937.0	1947.6	1868.0	1898.0	1917.5	1967.1	1997.1	2016.6
Divi's Laboratories Ltd.	4510.5	4523.5	4427.0	4463.5	4487.0	4547.0	4583.5	4607.0

PIVOT REPORT NIFTY F&O

SYMBOL	LTP	PIVOT	SUP3	SUP2	SUP1	RES1	RES2	RES3
DLF Ltd.	287.9	291.2	272.0	279.5	283.7	295.4	302.9	307.1
Dr. Lal Pathlabs Ltd.	3457.8	3452.9	3381.7	3403.8	3430.8	3479.9	3502.0	3529.0
Dr. Reddy's Laboratories Ltd.	5466.8	5501.5	5276.5	5363.1	5414.9	5553.3	5639.9	5691.7
Eicher Motors Ltd.	2729.3	2723.8	2678.7	2691.9	2710.6	2742.5	2755.7	2774.4
Escorts Ltd.	1202.1	1205.5	1170.8	1183.5	1192.8	1214.8	1227.5	1236.8
Exide Industries Ltd.	183.6	183.9	178.6	180.5	182.0	185.4	187.3	188.8
Federal Bank Ltd.	86.1	86.5	82.8	84.2	85.1	87.4	88.8	89.7
GAIL (India) Ltd.	148.7	149.4	145.1	146.8	147.7	150.4	152.1	153.0
Glenmark Pharmaceuticals Ltd.	649.2	653.5	623.7	635.1	642.1	660.5	671.9	678.9
GMR Infrastructure Ltd.	32.2	32.3	30.0	30.8	31.5	33.0	33.8	34.5
Godrej Consumer Products Ltd.	962.7	961.4	935.3	943.5	953.1	971.0	979.2	988.8
Godrej Properties Ltd.	1454.7	1467.1	1374.7	1409.6	1432.1	1489.6	1524.5	1547.0
Granules India	342.4	342.7	324.3	330.5	336.4	348.6	354.8	360.7
Grasim Industries Ltd.	1475.5	1482.1	1439.0	1455.6	1465.5	1492.1	1508.7	1518.6
Gujarat Gas Co. Ltd.	672.3	674.4	647.6	657.2	664.8	681.9	691.5	699.1
Havell's India Ltd.	1028.5	1028.2	1004.6	1012.3	1020.4	1036.3	1044.0	1052.1
HCL Technologies Ltd.	976.8	976.3	958.5	964.3	970.5	982.5	988.3	994.5
HDFC Asset Management Company Ltd.	2934.7	2928.3	2844.6	2870.3	2902.5	2960.5	2986.2	3018.4
HDFC Bank Ltd.	1520.5	1523.9	1485.8	1499.6	1510.0	1534.3	1548.1	1558.5
HDFC Life Insurance Company Ltd.	681.3	683.0	665.8	672.1	676.7	687.6	693.9	698.5
Hero MotoCorp Ltd.	2900.4	2908.5	2837.4	2863.8	2882.1	2926.8	2953.2	2971.5
Hindalco Industries Ltd.	383.1	385.7	366.9	374.0	378.6	390.3	397.4	402.0
Hindustan Petroleum Corporation Ltd.	283.9	285.4	275.1	279.1	281.5	287.8	291.8	294.2
Hindustan Unilever Ltd.	2447.6	2451.9	2402.8	2420.6	2434.1	2465.4	2483.2	2496.7
Housing Development Finance Corporation Ltd.	2512.1	2521.3	2462.9	2485.5	2498.8	2534.6	2557.2	2570.5
I T C Ltd.	202.0	202.8	198.3	200.1	201.0	203.7	205.5	206.4
ICICI Bank Ltd.	641.9	644.7	619.4	628.8	635.3	651.2	660.6	667.1
ICICI Lombard General Insurance Company Ltd.	1569.2	1579.9	1515.1	1540.3	1554.7	1594.3	1619.5	1633.9
ICICI Prudential Life Insurance Company	621.1	623.4	591.6	602.9	612.0	632.5	643.8	652.9
IDFC First Bank Ltd.	53.2	53.5	51.2	52.1	52.6	54.0	54.9	55.4
Indiabulls Housing Finance	261.7	262.9	252.9	256.7	259.2	265.4	269.2	271.7
Indian Oil Corporation Ltd.	107.6	108.0	105.2	106.3	106.9	108.7	109.8	110.4
Indian Railway Catering & Tourism Corp Ltd.	2193.9	2209.0	2106.9	2146.0	2169.9	2232.9	2272.0	2295.9
Indraprastha Gas Ltd.	578.9	575.3	545.6	554.3	566.6	587.6	596.3	608.6
Indus Towers Ltd.	239.9	238.6	230.9	233.1	236.5	242.0	244.2	247.6
IndusInd Bank Ltd.	1045.5	1047.6	1009.3	1022.8	1034.1	1058.9	1072.4	1083.7
Info Edge (India) Ltd.	5377.4	5407.5	5114.9	5222.5	5299.9	5484.9	5592.5	5669.9
Infosys Ltd.	1560.8	1561.9	1520.8	1534.9	1547.8	1574.8	1588.9	1601.8
Interglobe Aviation	1822.0	1823.6	1766.1	1785.8	1803.9	1841.7	1861.4	1879.5
Jindal Steel & Power Ltd.	386.6	390.9	362.5	373.4	380.0	397.4	408.3	414.9
JSW Steel Ltd.	668.3	675.5	634.7	650.7	659.5	684.3	700.3	709.1
Jubliant Foodworks Limited	3126.5	3131.8	3055.6	3082.8	3104.6	3153.6	3180.8	3202.6
Kotak Mahindra Bank Ltd.	1732.3	1740.1	1679.2	1702.1	1717.2	1755.2	1778.1	1793.2
L&T Finance Holdings Ltd.	92.5	92.8	88.7	90.2	91.3	94.0	95.5	96.6
L&T Technology Services	2963.7	2953.4	2842.2	2875.8	2919.8	2997.3	3030.9	3074.9
Larsen & Toubro Infotech	4042.5	4056.2	3938.6	3982.4	4012.4	4086.3	4130.1	4160.1

PIVOT REPORT NIFTY F&O

SYMBOL	LTP	PIVOT	SUP3	SUP2	SUP1	RES1	RES2	RES3
Larsen & Toubro Ltd.	1500.7	1507.2	1463.5	1480.2	1490.5	1517.5	1534.2	1544.5
LIC Housing Finance Ltd.	461.2	463.6	446.4	453.0	457.1	467.7	474.3	478.4
Lupin Ltd.	1140.1	1144.5	1110.2	1123.1	1131.6	1153.0	1165.9	1174.4
Mahanagar Gas Ltd	1165.3	1170.1	1136.9	1149.6	1157.4	1177.9	1190.6	1198.4
Mahindra & Mahindra Financial Services Ltd.	160.7	161.0	155.0	157.1	158.9	162.8	164.9	166.7
Mahindra & Mahindra Ltd.	776.3	778.3	752.4	761.7	769.0	785.6	794.9	802.2
Manappuram Finance Limited	174.5	175.8	166.4	169.9	172.2	178.1	181.6	183.9
Marico Ltd.	527.2	530.4	509.3	517.4	522.3	535.3	543.4	548.3
Maruti Suzuki India Ltd.	7401.2	7428.1	7245.1	7315.1	7358.1	7471.1	7541.1	7584.1
Max Financial Services Ltd.	1048.8	1052.3	1010.6	1025.7	1037.2	1063.8	1078.9	1090.4
MindTree Ltd.	2522.7	2532.2	2452.5	2482.3	2502.5	2552.4	2582.2	2602.4
Motherson Sumi Systems Ltd.	232.1	232.8	219.8	224.4	228.2	236.6	241.2	245.0
Mphasis Ltd.	2176.4	2183.8	2097.6	2128.8	2152.6	2207.6	2238.8	2262.6
MRF Ltd.	80418.0	80619.3	78658.7	79379.3	79898.7	81138.7	81859.3	82378.7
Muthoot Finance	1533.3	1544.7	1473.6	1501.1	1517.2	1560.8	1588.3	1604.4
National Aluminium Co. Ltd.	83.2	83.5	77.6	79.6	81.4	85.3	87.3	89.1
Navin Fluorine International Ltd.	3842.8	3852.6	3690.2	3747.6	3795.2	3900.2	3957.6	4005.2
Nestle India Ltd.	17618.9	17618.9	17376.4	17457.2	17538.1	17699.8	17780.6	17861.5
Nippon Life India Asset Management Ltd.	377.6	380.8	351.8	362.5	370.1	388.4	399.1	406.7
NMDC Ltd.	167.1	167.7	161.9	164.0	165.6	169.3	171.4	173.0
NTPC Ltd.	117.5	117.8	115.4	116.3	116.9	118.4	119.3	119.9
Oil & Natural Gas Corporation Ltd.	117.1	117.8	113.6	115.2	116.1	118.7	120.3	121.2
Page Industries	30413.6	30585.6	29160.8	29693.1	30053.3	30945.8	31478.1	31838.3
Petronet LNG Ltd.	223.8	224.6	219.8	221.7	222.7	225.6	227.5	228.5
Pfizer Ltd.	5740.7	5730.2	5660.4	5680.2	5710.4	5760.4	5780.2	5810.4
PI Industries Limited	2944.8	2969.3	2829.6	2884.3	2914.5	2999.5	3054.2	3084.4
Pidilite Industries Ltd.	2283.5	2282.2	2221.3	2241.2	2262.3	2303.3	2323.2	2344.3
Piramal Enterprises	2320.5	2338.4	2220.5	2265.8	2293.1	2365.8	2411.1	2438.4
Power Finance Corporation Ltd.	121.4	122.1	117.0	118.9	120.2	123.3	125.2	126.5
Power Grid Corporation of India Ltd.	231.2	231.3	225.8	227.7	229.4	233.0	234.9	236.6
Punjab National Bank	41.1	41.4	39.2	40.1	40.6	41.9	42.8	43.3
PVR Limited	1360.1	1369.2	1302.2	1327.6	1343.8	1385.5	1410.9	1427.1
RBL Bank	215.8	219.1	200.5	207.8	211.8	223.1	230.4	234.4
REC Ltd.	143.5	144.6	137.4	140.2	141.8	146.3	149.1	150.7
Reliance Industries Ltd.	2092.6	2096.9	2040.8	2060.9	2076.8	2112.7	2132.8	2148.7
S&P CNX NIFTY	15727.9	15765.5	15442.4	15562.6	15645.3	15848.2	15968.4	16051.1
SBI Life Insurance Company Ltd.	1021.6	1016.6	983.2	992.7	1007.1	1031.0	1040.5	1054.9
Shree Cement Ltd.	27581.8	27704.5	26670.7	27056.2	27319.0	27967.3	28352.8	28615.6
Shriram Transport Finance Co. Ltd.	1431.6	1433.6	1395.2	1408.7	1420.1	1445.0	1458.5	1469.9
Siemens Ltd.	2013.5	2020.3	1956.1	1979.8	1996.6	2037.2	2060.9	2077.7
SRF Ltd.	7544.1	7545.4	7263.0	7357.6	7450.8	7638.6	7733.2	7826.4
State Bank of India	424.5	427.3	405.9	414.0	419.2	432.5	440.6	445.8
Steel Authority of India Ltd.	122.9	124.9	113.8	118.2	120.5	127.2	131.6	133.9
Sun Pharmaceutical Industries Ltd.	666.9	671.0	645.2	655.2	661.0	676.8	686.8	692.6
Sun TV Network Ltd.	522.1	525.4	501.5	510.6	516.3	531.1	540.2	545.9

PIVOT REPORT NIFTY F&O

SYMBOL	LTP	PIVOT	SUP3	SUP2	SUP1	RES1	RES2	RES3
Tata Chemicals Ltd.	764.3	766.5	729.9	742.8	753.6	777.3	790.2	801.0
Tata Consultancy Services Ltd.	3258.5	3262.8	3161.5	3196.7	3227.6	3293.7	3328.9	3359.8
Tata Consumer Products Ltd.	763.3	762.1	749.2	753.1	758.2	767.2	771.1	776.2
Tata Motors Ltd.	306.4	308.7	292.8	298.9	302.6	312.4	318.5	322.2
Tata Power Co. Ltd.	123.4	124.2	117.1	119.8	121.6	126.0	128.7	130.5
Tata Steel Ltd.	1189.8	1200.3	1121.8	1151.5	1170.6	1219.4	1249.1	1268.2
Tech Mahindra Ltd.	1060.2	1056.2	1030.6	1037.8	1049.0	1067.4	1074.6	1085.8
The Ramco Cements Ltd.	1077.3	1086.1	1008.4	1037.2	1057.3	1106.1	1134.9	1155.0
Titan Company Ltd.	1726.4	1731.2	1691.7	1706.5	1716.4	1741.2	1756.0	1765.9
Torrent Pharmaceuticals Ltd.	2945.5	2951.7	2880.7	2906.4	2926.0	2971.3	2997.0	3016.6
Torrent Power Ltd.	471.3	471.0	458.6	462.6	466.9	475.3	479.3	483.6
Trent Ltd.	921.3	925.1	860.3	883.1	902.2	944.2	967.0	986.1
TVS Motor Company Ltd.	598.9	602.0	577.7	586.8	592.9	608.1	617.2	623.3
UltraTech Cement Ltd.	6901.9	6913.3	6679.7	6761.4	6831.6	6983.5	7065.2	7135.4
United Breweries Ltd.	1420.2	1423.4	1383.2	1397.7	1408.9	1434.7	1449.2	1460.4
United Spirits Ltd.	656.9	660.0	635.3	644.6	650.7	666.2	675.5	681.6
UPL Ltd.	814.1	815.4	788.7	798.0	806.1	823.5	832.8	840.9
Vedanta Ltd	264.6	266.6	251.0	256.9	260.7	270.4	276.3	280.1
Vodafone Idea Ltd.	8.8	8.9	8.2	8.5	8.6	9.0	9.3	9.4
Voltas Ltd.	1011.7	1014.3	985.2	995.8	1003.7	1022.2	1032.8	1040.7
Wipro Ltd.	531.0	532.0	518.1	523.0	527.0	536.0	540.9	544.9
Zee Entertainment Enterprises Ltd.	216.2	217.9	204.3	209.4	212.8	221.3	226.4	229.8

TECHNICAL RESEARCH DESK

TEL: +91 22 61596173

INSTITUTIONAL SALES DESK

TEL: +91 22 61596403/04/05

DISCLAIMER APPENDIX

Analysts holding in the Stock : Nil

Analysts Certification:

We analysts and the authors of this report, hereby certify that all of the views expressed in this research report accurately reflect our personal views about any and all of the subject issuer s or securities. We also certify that no part of our compensation was, is, or will be directly or indirectly related to the specific recommendation s or view s in this report. Analysts aren't registered as research analysts by FINRA and might not be an associated person of the BP Equities Pvt. Ltd. Institutional Equities.

General Disclaimer

This report has been prepared by the research department of BP EQUITIES Pvt. Ltd, is for information purposes only. This report is not construed as an offer to sell or the solicitation of an offer to buy or sell any security in any jurisdiction where such an offer or solicitation would be illegal.

BP EQUITIES Pvt. Ltd have exercised due diligence in checking the correctness and authenticity of the information contained herein, so far as it relates to current and historical information, but do not guarantee its accuracy or completeness. The opinions expressed are our current opinions as of the date appearing in the material and may be subject to change from time to time. Prospective investors are cautioned that any forward looking statement are not predictions and are subject to change without prior notice.

Recipients of this material should rely on their own investigations and take their own professional advice. BP EQUITIES Pvt. Ltd or any of its affiliates or employees shall not be in any way responsible for any loss or damage that may arise to any person from any inadvertent error in the information contained in this report. BP EQUITIES Pvt. Ltd. or any of its affiliates or employees do not provide, at any time, any express or implied warranty of any kind, regarding any matter pertaining to this report, including without limitation the implied warranties of merchantability, fitness for a particular purpose, and non-infringement. The recipients of this report should rely on their own investigations.

BP EQUITIES Pvt. Ltd and/or its affiliates and/or employees may have interests/ positions, financial or otherwise in the securities mentioned in this report. Opinions expressed are our current opinions as of the date appearing on this material only. While we endeavor to update on a reasonable basis the information discussed in this material, there may be regulatory, compliance, or other reasons that prevent us from doing so.

This report is not directed to or intended for display, downloading, printing, reproducing or for distribution to or use by any person in any locality, state and country or other jurisdiction where such distribution, publication or use would be contrary to the law or regulation or would subject to BP EQUITIES Pvt. Ltd or any of its affiliates to any registration or licensing requirement within such jurisdiction.

Corporate Office :

**4th floor,
Rustom Bldg,
29, Veer Nariman Road , Fort,
Mumbai-400001
Phone- +91 22 6159 6464
Fax-+91 22 6159 6160
Website - www.bpwealth.com**

Registered Office :

**24/26 , 1st Floor , Cama
Building, Dalal street,
Fort,
Mumbai-400001
BP Equities Pvt. Ltd.
CIN No: U67120M
H1997PTC107392**