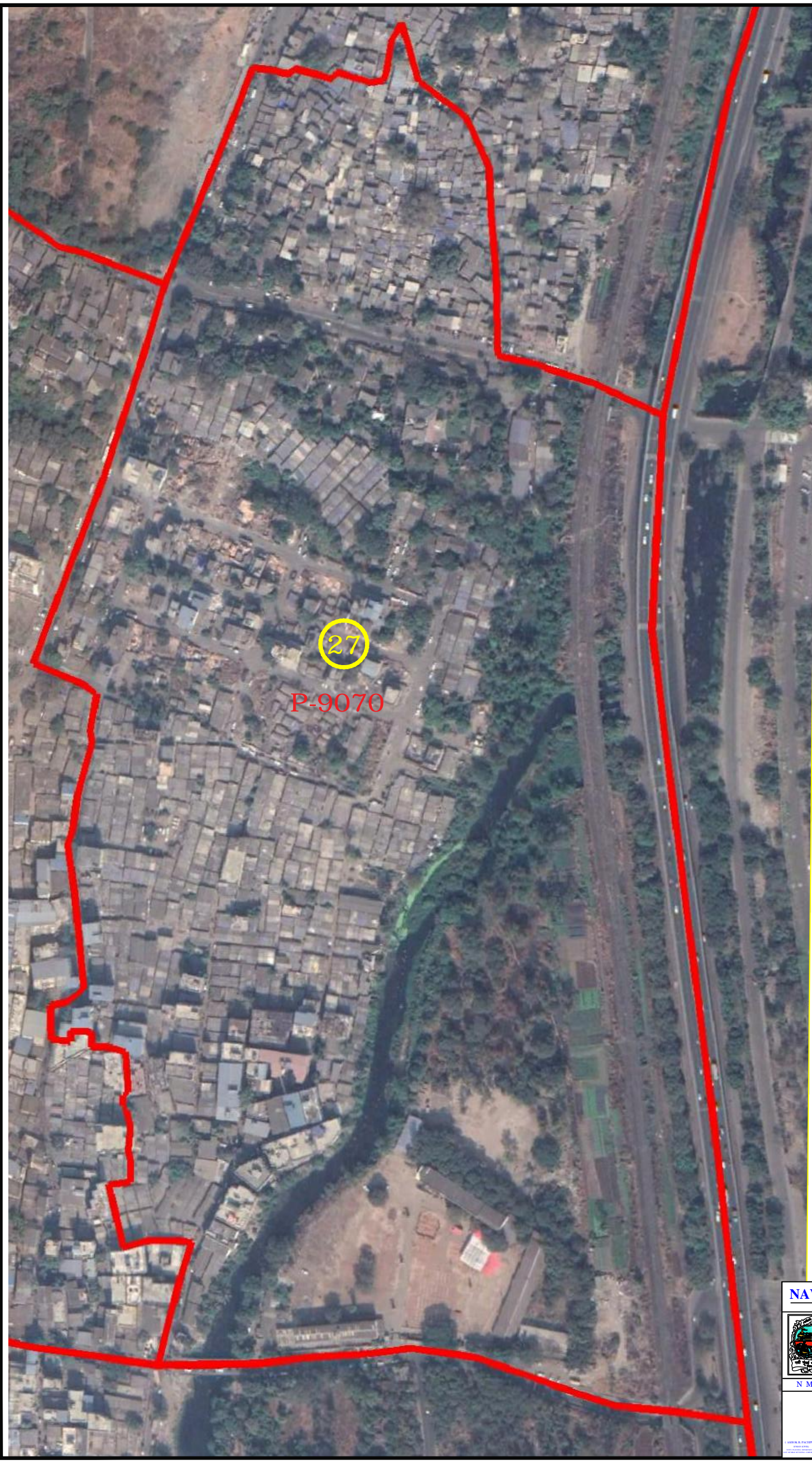




STATE ELECTION COMMISSION
MAHARASHTRA



NAVI MUMBAI
MUNICIPAL CORPORATION.



P-9070

WARD NO-27
P-9070



WARD BOUNDARY

(ANNSAHEB B.MISAL)
COMMISSIONER,
NAVI MUMBAI MUNICIPAL CORPORATION.

NAVI MUMBAI MUNICIPAL CORPORATION.



PLAN SHOWING FOR
WARD FORMATION OF
GENERAL ELECTION -2020

N M M C ○ D R A W N B Y & C H E C K R D B Y ○

<small>(NAME & PHOTO)</small>	<small>(NAME & PHOTO)</small>	<small>(NAME & PHOTO)</small>	<small>(NAME & PHOTO)</small>	<small>(NAME & PHOTO)</small>	<small>(NAME & PHOTO)</small>	<small>(NAME & PHOTO)</small>