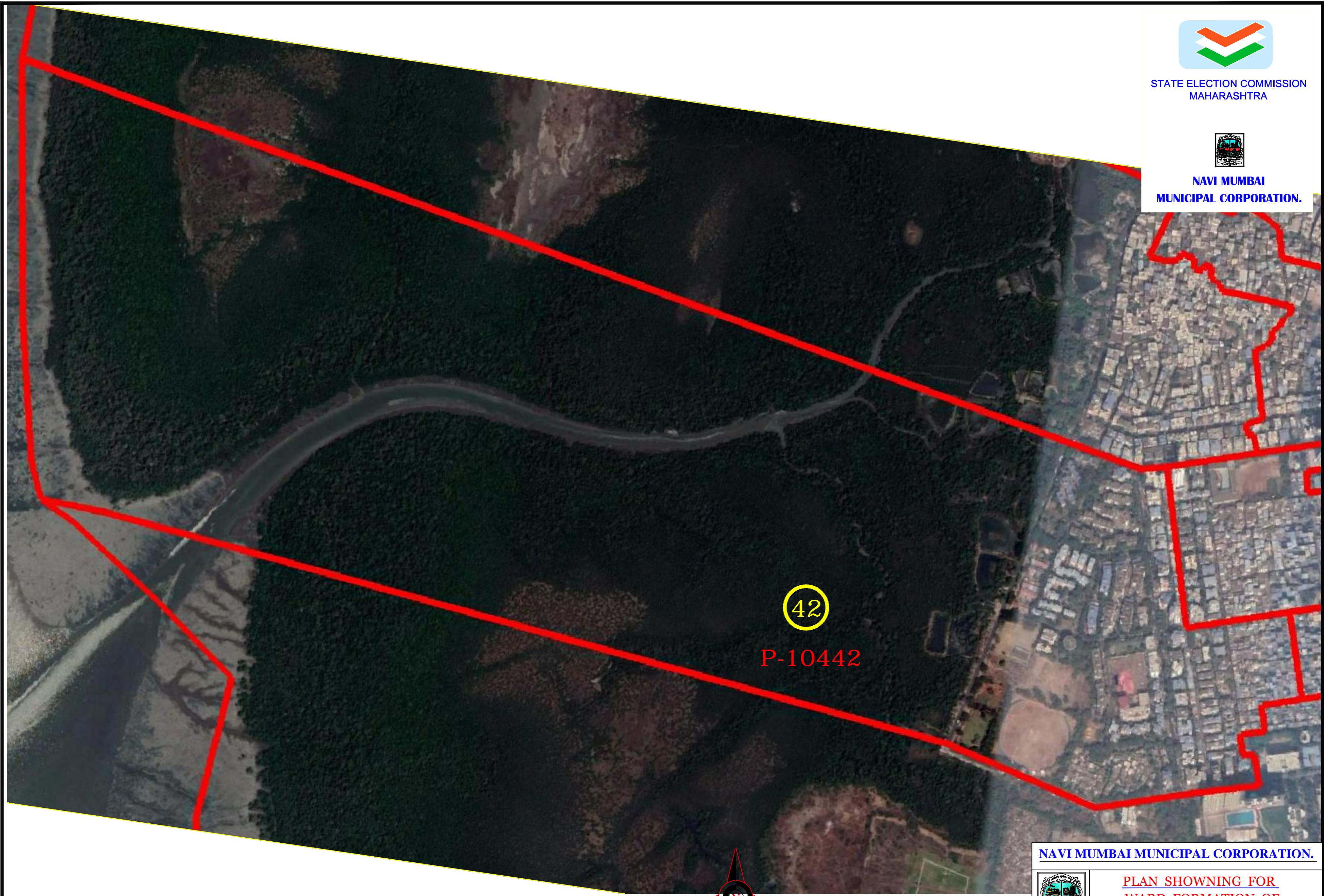




STATE ELECTION COMMISSION  
MAHARASHTRA



NAVI MUMBAI  
MUNICIPAL CORPORATION.



42

P-10442

WARD NO.42  
P - 10442



WARD BOUNDARY-

(ANNA SAHEB B. MISAL)  
COMMISSIONER,  
NAVI MUMBAI MUNICIPAL CORPORATION.

NAVI MUMBAI MUNICIPAL CORPORATION.



PLAN SHOWING FOR  
WARD FORMATION OF  
GENERAL ELECTION -2020

N M M C      DRAWN BY & CHECKED BY

<small>1. SHRIK R. PACHYUJI</small>	<small>2. SANJAY R. PACHYUJI</small>	<small>3. SHRIHAR P. PARABHAR</small>	<small>4. SATDIP P. UGLE</small>	<small>5. IRMAAN R. THAKUR</small>	<small>6. CHANDRA W. PATIL</small>	<small>7. AMOL A. YADAV</small>
-------------------------------------	--------------------------------------	---------------------------------------	----------------------------------	------------------------------------	------------------------------------	---------------------------------