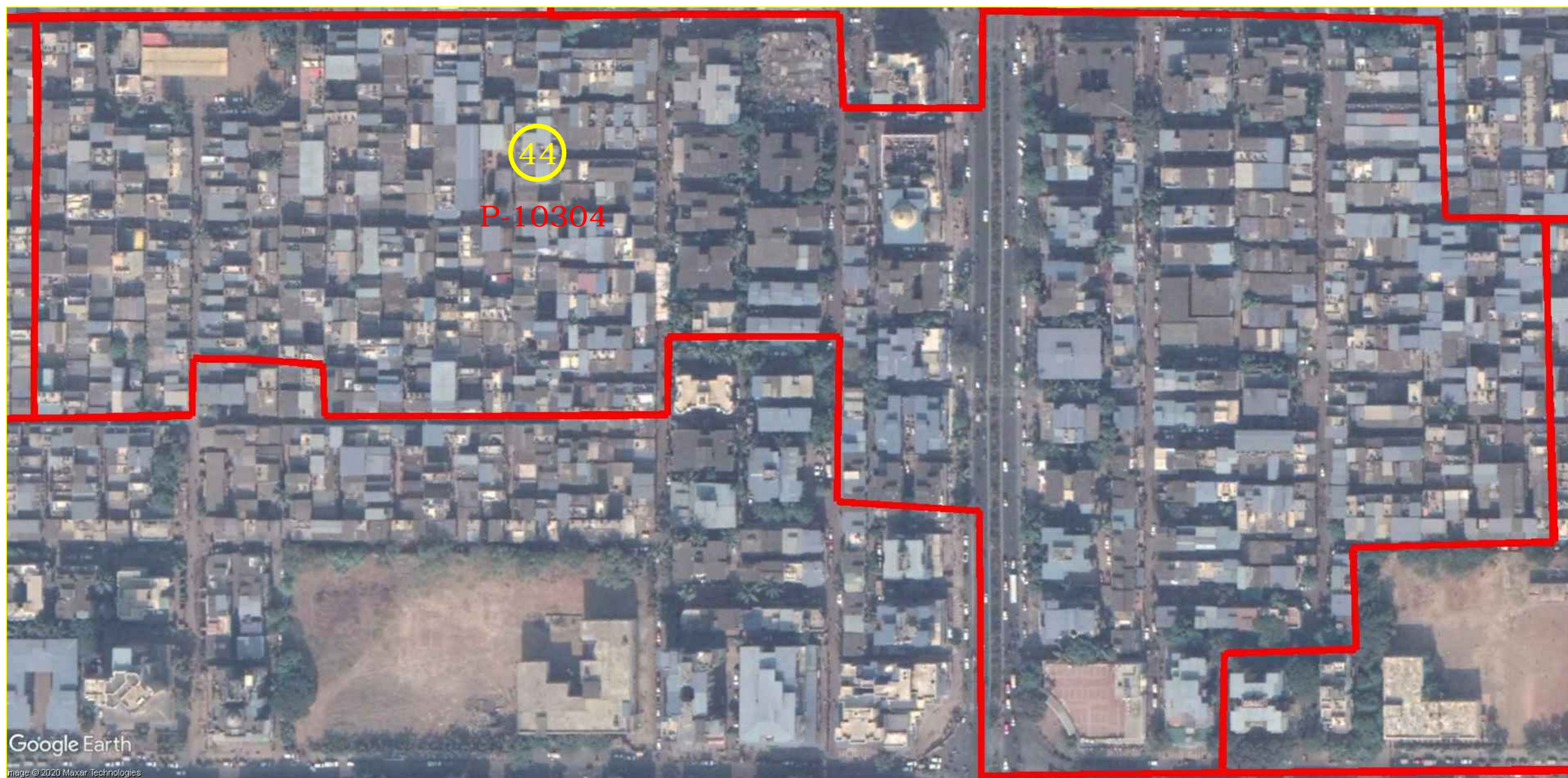




STATE ELECTION COMMISSION
MAHARASHTRA



NAVI MUMBAI
MUNICIPAL CORPORATION.



Google Earth
Image © 2020 Maxar Technologies

WARD NO.44
P - 10304



WARD BOUNDARY-

(ANNA SAHEB B. MISAL)
COMMISSIONER,
NAVI MUMBAI MUNICIPAL CORPORATION.

NAVI MUMBAI MUNICIPAL CORPORATION.



PLAN SHOWING FOR
WARD FORMATION OF
GENERAL ELECTION -2020

N M M C DRAWN BY & CHECKED BY

<small>1. SHRIK R. PACHYU</small>	<small>2. SANJAY R. PARGHIA</small>	<small>3. SHRIHAR P. PARABHAR</small>	<small>4. SATYAJ P. UGLE</small>	<small>5. HIRMAN R. THAKUR</small>	<small>6. BHENDRA W. PATIL</small>	<small>7. AMOL A. YADAV</small>