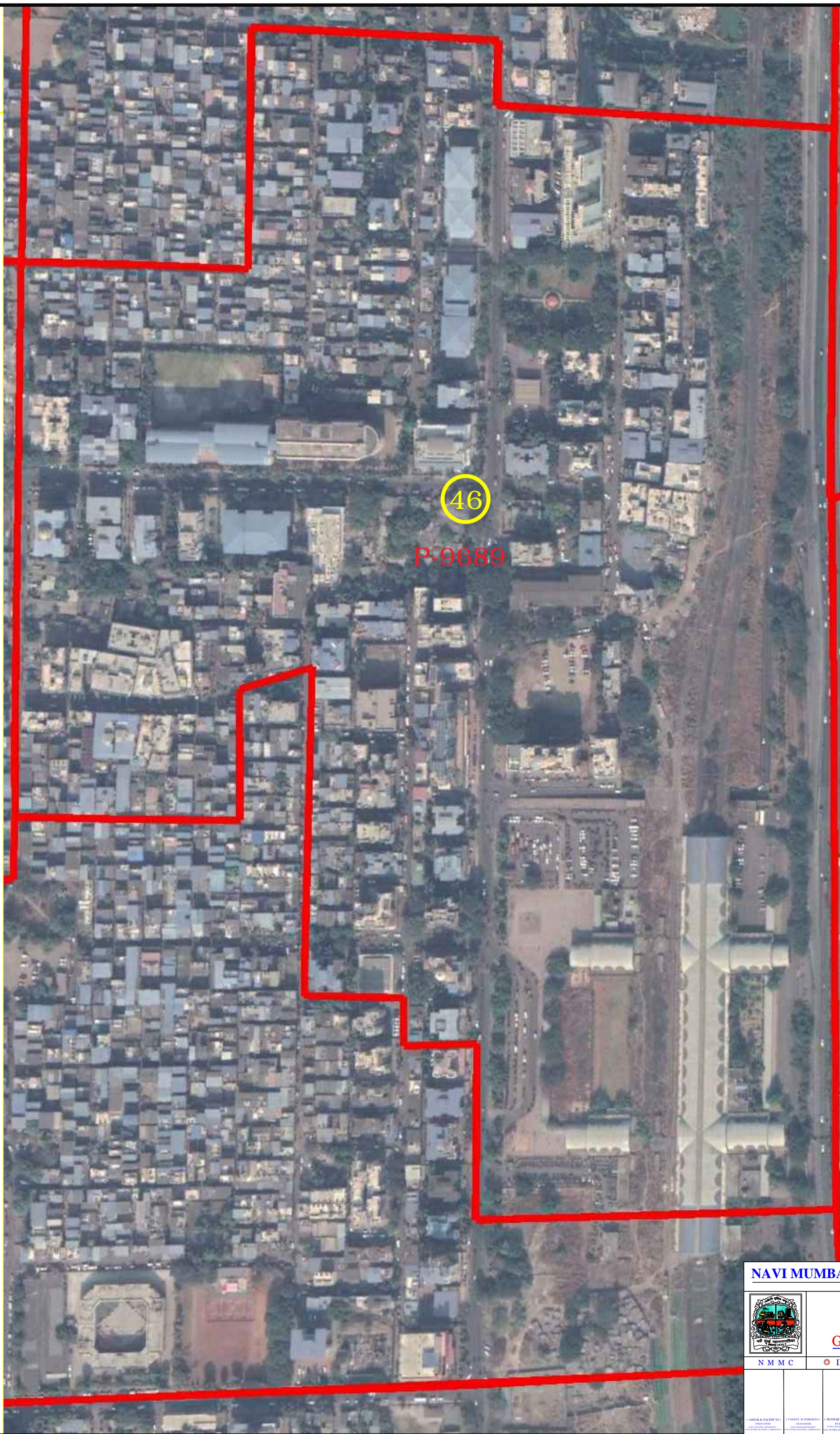




STATE ELECTION COMMISSION
MAHARASHTRA



NAVI MUMBAI
MUNICIPAL CORPORATION.



46

P-9689

WARD NO-46
P-9689



WARD BOUNDARY

(ANNASAHEB B.MISAL)
COMMISSIONER,
NAVI MUMBAI MUNICIPAL CORPORATION.

NAVI MUMBAI MUNICIPAL CORPORATION.



PLAN SHOWING FOR
WARD FORMATION OF
GENERAL ELECTION -2020

N M M C		DRAWN BY & CHECKED BY	
(ANUR K. PACHPUDI) CHIEF ENGINEER CITY ENGINEERING DEPARTMENT NAVI MUMBAI MUNICIPAL CORPORATION.	(VANDY D. PARSHAN) CHIEF ARCHITECT CITY ARCHITECTURE DEPARTMENT NAVI MUMBAI MUNICIPAL CORPORATION.	(SHAMSI P. FARUKARI) CHIEF PLANNER CITY PLANNING DEPARTMENT NAVI MUMBAI MUNICIPAL CORPORATION.	(SAYISHI. UGLE) CITY ENGINEER CITY ENGINEERING DEPARTMENT NAVI MUMBAI MUNICIPAL CORPORATION.
(HEMANT R. THAKUR) CHIEF PLANNER CITY PLANNING DEPARTMENT NAVI MUMBAI MUNICIPAL CORPORATION.	(SURENDRA W. PATIL) CITY ENGINEER CITY ENGINEERING DEPARTMENT NAVI MUMBAI MUNICIPAL CORPORATION.	(AMOL A. YADAV) CHIEF ARCHITECT CITY ARCHITECTURE DEPARTMENT NAVI MUMBAI MUNICIPAL CORPORATION.	