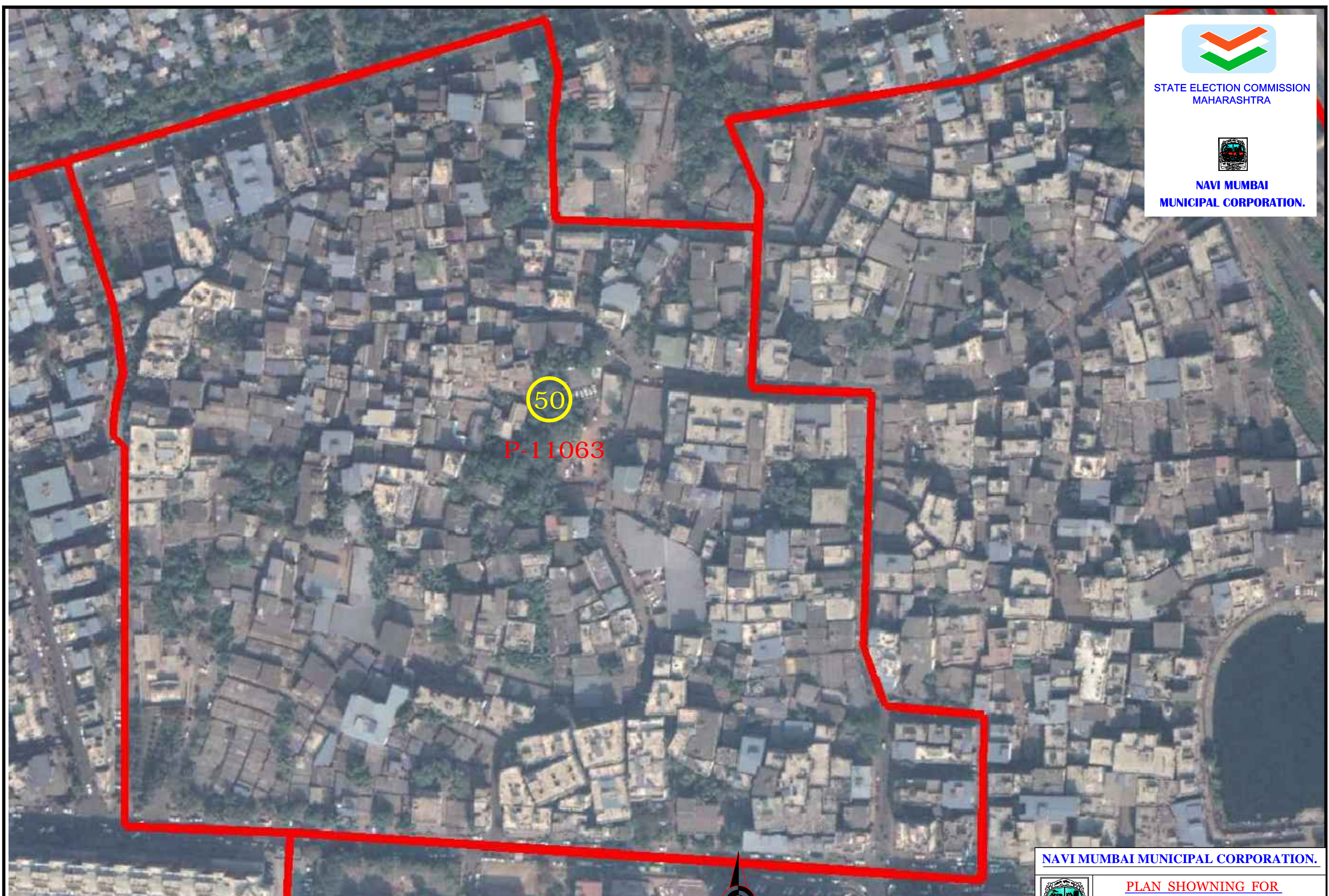




STATE ELECTION COMMISSION
MAHARASHTRA



NAVI MUMBAI
MUNICIPAL CORPORATION.



50
P-11063

WARD NO.50
P - 11063



WARD BOUNDARY-

(ANNA SAHEB B. MISAL)
COMMISSIONER,
NAVI MUMBAI MUNICIPAL CORPORATION.

NAVI MUMBAI MUNICIPAL CORPORATION.



PLAN SHOWING FOR
WARD FORMATION OF
GENERAL ELECTION -2020

N M M C DRAWN BY & CHECKED BY

<small>1. SHRIK R. P. CHAVAN</small>	<small>2. SANJAY R. P. CHAVAN</small>	<small>3. SHRIHAR P. PARABHAR</small>	<small>4. SATYAJIT UGLE</small>	<small>5. HIRANSHY R. THAKUR</small>	<small>6. BHUSHAN W. PATIL</small>	<small>7. AMOL A. YADAV</small>
--------------------------------------	---------------------------------------	---------------------------------------	---------------------------------	--------------------------------------	------------------------------------	---------------------------------