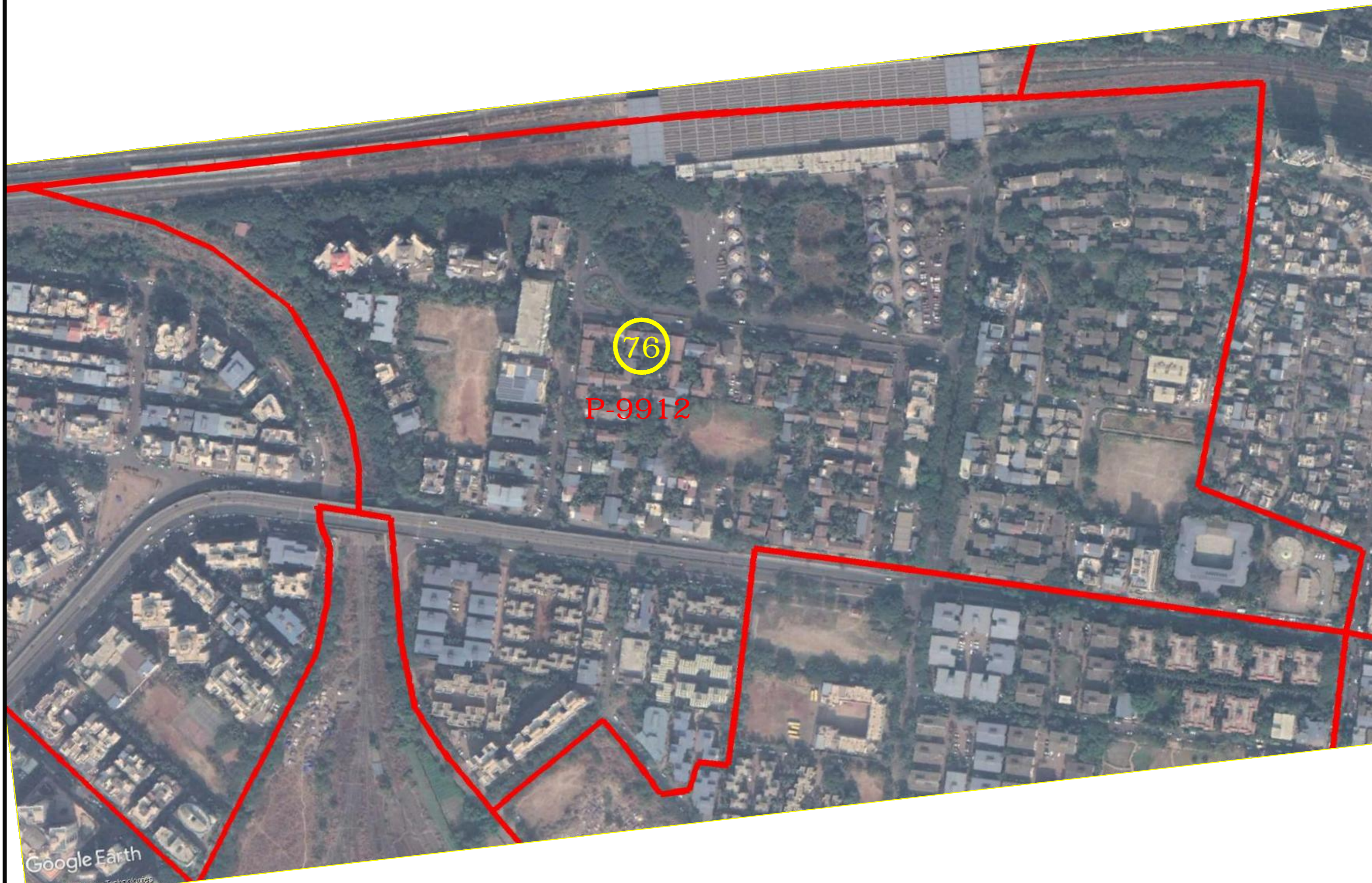




STATE ELECTION COMMISSION
MAHARASHTRA



NAVI MUMBAI
MUNICIPAL CORPORATION.



WARD NO.76
P -9912



WARD BOUNDARY-

(ANNASAHEB B.MISAL)
COMMISSIONER,
NAVI MUMBAI MUNICIPAL CORPORATION.

Google Earth
Image © 2020 Maxar Technologies

76

NAVI MUMBAI MUNICIPAL CORPORATION.



PLAN SHOWING FOR
WARD FORMATION OF
GENERAL ELECTION -2020

N M M C • D R A W N B Y & C H E C K R D B Y •

<small>1. SHRI R. P. CHAVAN CHIEF ENGINEER NAVI MUMBAI MUNICIPAL CORPORATION</small>	<small>2. SANJAY R. P. CHAVAN CHIEF ENGINEER NAVI MUMBAI MUNICIPAL CORPORATION</small>	<small>3. SHRI R. P. CHAVAN CHIEF ENGINEER NAVI MUMBAI MUNICIPAL CORPORATION</small>	<small>4. SATISH P. UGLE CHIEF ENGINEER NAVI MUMBAI MUNICIPAL CORPORATION</small>	<small>5. HIRANSHI R. THAKUR CHIEF ENGINEER NAVI MUMBAI MUNICIPAL CORPORATION</small>	<small>6. SUBHASH W. PATIL CHIEF ENGINEER NAVI MUMBAI MUNICIPAL CORPORATION</small>	<small>7. AMOL A. YADAV CHIEF ENGINEER NAVI MUMBAI MUNICIPAL CORPORATION</small>
--	--	--	---	---	---	--