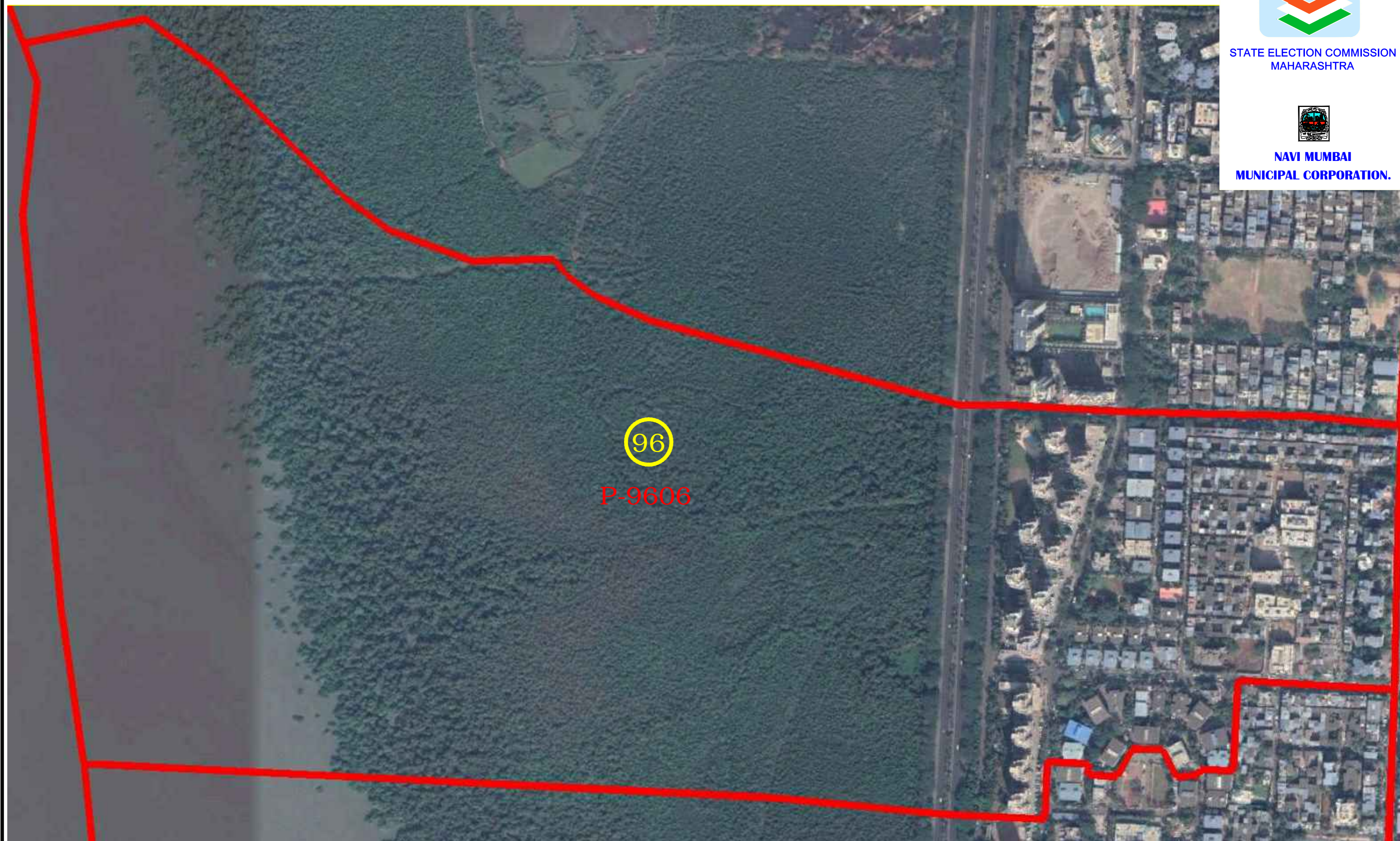




STATE ELECTION COMMISSION
MAHARASHTRA



NAVI MUMBAI
MUNICIPAL CORPORATION.



96

P-9606

WARD NO.96
P - 9606



SCALE:-NTS

WARD BOUNDARY-

(ANNA SAHEB B. MISAL)
COMMISSIONER,
NAVI MUMBAI MUNICIPAL CORPORATION.

NAVI MUMBAI MUNICIPAL CORPORATION.



PLAN SHOWING FOR
WARD FORMATION OF
GENERAL ELECTION -2020

N M M C DRAWN BY & CHECKED BY

<small>(SHRI R. P. CHAVHAN) DRAWN BY</small>	<small>(ANANT R. P. CHAVHAN) CHECKED BY</small>	<small>(SHRI R. P. CHAVHAN) DRAWN BY</small>	<small>(SAYDEE UGLE) CHECKED BY</small>	<small>(BIRMANI R. THAKUR) DRAWN BY</small>	<small>(S. BHUSHA W. PATIL) CHECKED BY</small>	<small>(S. MOH. A. YADAV) DRAWN BY</small>
--	---	--	---	---	--	--