

**tscte**

**Question Paper Name:** Pharmacy 29th May 2019 Shift 1  
**Subject Name:** Pharmacy  
**Creation Date:** 2019-05-28 15:37:28  
**Duration:** 120  
**Total Marks:** 120  
**Display Marks:** No  
**Share Answer Key With Delivery Engine:** Yes  
**Actual Answer Key:** Yes

**Pharmacy**

**Group Number :** 1  
**Group Id :** 39090042  
**Group Maximum Duration :** 0  
**Group Minimum Duration :** 120  
**Revisit allowed for view? :** No  
**Revisit allowed for edit? :** No  
**Break time:** 0  
**Group Marks:** 120

**Pharmacy**

**Section Id :** 39090078  
**Section Number :** 1  
**Section type :** Online  
**Mandatory or Optional:** Mandatory  
**Number of Questions:** 120  
**Number of Questions to be attempted:** 120  
**Section Marks:** 120  
**Display Number Panel:** Yes  
**Group All Questions:** No

**Sub-Section Number:** 1  
**Sub-Section Id:** 39090078  
**Question Shuffling Allowed :** Yes

**Question Number : 1 Question Id : 3909004921 Question Type : MCQ Option Shuffling : Yes Display Question Number : Yes**  
**Single Line Question Option : No Option Orientation : Vertical**  
**Correct Marks : 1 Wrong Marks : 0**

Quinine and d-tubocurarine are used in the diagnosis of \_\_\_\_\_

Options :

1. Myasthenia gravis

2. Rheumatoid arthritis

3. Arrhythmias

4. Glaucoma

Question Number : 2 Question Id : 3909004922 Question Type : MCQ Option Shuffling : Yes Display Question Number : Yes  
Single Line Question Option : No Option Orientation : Vertical

Correct Marks : 1 Wrong Marks : 0

The reagent prepared with the use of antimony trichloride is \_\_\_\_\_

Options :

1. Molisch

2. Carr-Price

3. Shinoda

4. Mayer's

Question Number : 3 Question Id : 3909004923 Question Type : MCQ Option Shuffling : Yes Display Question Number : Yes  
Single Line Question Option : No Option Orientation : Vertical

Correct Marks : 1 Wrong Marks : 0

Which of the following terpene is used as anticancer agent?

Options :

1. Camptothecin

2. Podophyllotoxin

3. Taxol

4. Dactinomycin

Question Number : 4 Question Id : 3909004924 Question Type : MCQ Option Shuffling : Yes Display Question Number : Yes  
Single Line Question Option : No Option Orientation : Vertical

Correct Marks : 1 Wrong Marks : 0

The plant *Camptotheca acuminata* belongs to ..... family.

Options :

1. Nyctaginaceae

2. Leguminosae
3. Rubiaceae
4. Nyssaceae

Question Number : 5 Question Id : 3909004925 Question Type : MCQ Option Shuffling : Yes Display Question Number : Yes  
Single Line Question Option : No Option Orientation : Vertical  
Correct Marks : 1 Wrong Marks : 0

Quinolin alkaloids are biosynthesized from

Options :

1. Tryptophan
2. Phenylalanine
3. Histidine
4. Lysine

Question Number : 6 Question Id : 3909004926 Question Type : MCQ Option Shuffling : Yes Display Question Number : Yes  
Single Line Question Option : No Option Orientation : Vertical  
Correct Marks : 1 Wrong Marks : 0

Cuprea bark is obtained from the plant \_\_\_\_\_

Options :

1. *Cinchonalancifolia*
2. *Remijiapedunculata*
3. *Remijiapurdieana*
4. *Cinchonasuccirubra*

Question Number : 7 Question Id : 3909004927 Question Type : MCQ Option Shuffling : Yes Display Question Number : Yes  
Single Line Question Option : No Option Orientation : Vertical  
Correct Marks : 1 Wrong Marks : 0

Glycerrhizin is a \_\_\_\_\_

Options :

1. flavonol

2. triterpene
3. alkaloid
4. fatty acid

Question Number : 8 Question Id : 3909004928 Question Type : MCQ Option Shuffling : Yes Display Question Number : Yes  
Single Line Question Option : No Option Orientation : Vertical

Correct Marks : 1 Wrong Marks : 0

Aglycon present in Rutin is \_\_\_\_\_

Options :

1. quercetin
2. kaempferol
3. myricetin
4. galangin

Question Number : 9 Question Id : 3909004929 Question Type : MCQ Option Shuffling : Yes Display Question Number : Yes  
Single Line Question Option : No Option Orientation : Vertical

Correct Marks : 1 Wrong Marks : 0

What is the shape of calcium oxalate crystals in Jesuit's bark?

Options :

1. Star shaped
2. Rhomboidal
3. Clustered
4. Prismatic

Question Number : 10 Question Id : 3909004930 Question Type : MCQ Option Shuffling : Yes Display Question Number : Yes  
Single Line Question Option : No Option Orientation : Vertical

Correct Marks : 1 Wrong Marks : 0

Which of the following tests identifies the  $\gamma$ -lactone present in the cardenolides?

Options :

1. Kedde

2. Keller Kiliani
3. Carr-Price
4. Xanthidrol

Question Number : 11 Question Id : 3909004931 Question Type : MCQ Option Shuffling : Yes Display Question Number : Yes  
Single Line Question Option : No Option Orientation : Vertical

Correct Marks : 1 Wrong Marks : 0

Lysergic acid is biosynthesized from \_\_\_\_\_

Options :

1. Tryptophan
2. Phenylalanine
3. Histidine
4. Lysine

Question Number : 12 Question Id : 3909004932 Question Type : MCQ Option Shuffling : Yes Display Question Number : Yes  
Single Line Question Option : No Option Orientation : Vertical

Correct Marks : 1 Wrong Marks : 0

Heterocyclic rings found in nicotine are \_\_\_\_\_

Options :

1. quinoline +indole
2. pyridine+pyrrolidine
3. indole+isoquinoline
4. indole+quinolone

Question Number : 13 Question Id : 3909004933 Question Type : MCQ Option Shuffling : Yes Display Question Number : Yes  
Single Line Question Option : No Option Orientation : Vertical

Correct Marks : 1 Wrong Marks : 0

\_\_\_\_\_ is a very potent oxytocic

Options :

1. Caffeine
2. Ergometrine
3. Morphine
4. Strychnine

Question Number : 14 Question Id : 3909004934 Question Type : MCQ Option Shuffling : Yes Display Question Number : Yes  
Single Line Question Option : No Option Orientation : Vertical

Correct Marks : 1 Wrong Marks : 0

Glass wool is also known as

Options :

1. Silk
2. Mineral wool
3. Glass
4. Asbestos

Question Number : 15 Question Id : 3909004935 Question Type : MCQ Option Shuffling : Yes Display Question Number : Yes  
Single Line Question Option : No Option Orientation : Vertical

Correct Marks : 1 Wrong Marks : 0

The following is an endangered plant

Options :

1. *Datura metal*
2. *Aloe barbadensis*
3. *Carum carvi*
4. *Cassia angustifolia*

Question Number : 16 Question Id : 3909004936 Question Type : MCQ Option Shuffling : Yes Display Question Number : Yes  
Single Line Question Option : No Option Orientation : Vertical

Correct Marks : 1 Wrong Marks : 0

Opium is obtained from \_\_\_\_\_ capsule.

Options :



1. ripe
2. dried
3. immature
4. unripe

Question Number : 17 Question Id : 3909004937 Question Type : MCQ Option Shuffling : Yes Display Question Number : Yes  
Single Line Question Option : No Option Orientation : Vertical

Correct Marks : 1 Wrong Marks : 0

The color imparted to water by authentic saffron is \_\_\_\_\_

Options :

1. yellow
2. red
3. pink
4. orange

Question Number : 18 Question Id : 3909004938 Question Type : MCQ Option Shuffling : Yes Display Question Number : Yes  
Single Line Question Option : No Option Orientation : Vertical

Correct Marks : 1 Wrong Marks : 0

Which one of the following is not present in Triphala churna?

Options :

1. Amla
2. Brahmi
3. Bibhitak
4. Haritaki

Question Number : 19 Question Id : 3909004939 Question Type : MCQ Option Shuffling : Yes Display Question Number : Yes  
Single Line Question Option : No Option Orientation : Vertical

Correct Marks : 1 Wrong Marks : 0

The following is an antimalarial phytochemical

Options :

1. Taxol
2. Vincristine
3. Camptothecin
4. Artemisinin

Question Number : 20 Question Id : 3909004940 Question Type : MCQ Option Shuffling : Yes Display Question Number : Yes  
Single Line Question Option : No Option Orientation : Vertical

Correct Marks : 1 Wrong Marks : 0

Free umbelliferone is present in

Options :

1. Asafoetida
2. Cannabis
3. Guggul
4. Galbanum

Question Number : 21 Question Id : 3909004941 Question Type : MCQ Option Shuffling : Yes Display Question Number : Yes  
Single Line Question Option : No Option Orientation : Vertical

Correct Marks : 1 Wrong Marks : 0

Which of the following contain a chiral center?

Options :

1. Halothane
2. Propofol
3. Sevoflurane
4. Fluroxane

Question Number : 22 Question Id : 3909004942 Question Type : MCQ Option Shuffling : Yes Display Question Number : Yes  
Single Line Question Option : No Option Orientation : Vertical

Correct Marks : 1 Wrong Marks : 0

Which of the following DOES NOT contain piperazine ring?

Options :



1. Ziprasidone
2. Olanzapine
3. Citrizine
4. Zotepine

Question Number : 23 Question Id : 3909004943 Question Type : MCQ Option Shuffling : Yes Display Question Number : Yes  
Single Line Question Option : No Option Orientation : Vertical

Correct Marks : 1 Wrong Marks : 0

Inhibition of GABA metabolism is the main mechanism of action for \_\_\_\_\_

Options :

1. pregabalin
2. vigabatrin
3. alprazolam
4. phenytoin

Question Number : 24 Question Id : 3909004944 Question Type : MCQ Option Shuffling : Yes Display Question Number : Yes  
Single Line Question Option : No Option Orientation : Vertical

Correct Marks : 1 Wrong Marks : 0

Bioactivity of benzodiazepines is because of its ability to modulate \_\_\_\_\_

Options :

1. dopamine
2. serotonin
3. GABA
4. acetyl choline

Question Number : 25 Question Id : 3909004945 Question Type : MCQ Option Shuffling : Yes Display Question Number : Yes  
Single Line Question Option : No Option Orientation : Vertical

Correct Marks : 1 Wrong Marks : 0

The limit test for sulphate is carried out on the basis of the reaction between

Options :

1. Sodium chloride & Soluble chlorides
2. Sodium chloride & Soluble sulphates
3. Barium sulphate & Soluble chlorides
4. Barium chloride & Soluble Sulphates

Question Number : 26 Question Id : 3909004946 Question Type : MCQ Option Shuffling : Yes Display Question Number : Yes  
Single Line Question Option : No Option Orientation : Vertical

Correct Marks : 1 Wrong Marks : 0

What is the formula for zinc stearate?

Options :

1.  $[\text{CH}_3(\text{CH}_2)_{14} \text{COO}]_2 \text{Zn}$
2.  $[\text{CH}_3(\text{CH}_2)_{15} \text{COO}]_2 \text{Zn}$
3.  $[\text{CH}_3(\text{CH}_2)_{16} \text{COO}]_2 \text{Zn}$
4.  $[\text{CH}_3(\text{CH}_2)_{17} \text{COO}]_2 \text{Zn}$

Question Number : 27 Question Id : 3909004947 Question Type : MCQ Option Shuffling : Yes Display Question Number : Yes  
Single Line Question Option : No Option Orientation : Vertical

Correct Marks : 1 Wrong Marks : 0

Identify the best cementing material in dental practice

Options :

1.  $\text{SrCl}_2 \cdot 6\text{H}_2\text{O}$
2.  $\text{ZnCl}_2$
3.  $\text{CaCO}_3$
4.  $\text{ZnO}$

Question Number : 28 Question Id : 3909004948 Question Type : MCQ Option Shuffling : Yes Display Question Number : Yes  
Single Line Question Option : No Option Orientation : Vertical

Correct Marks : 1 Wrong Marks : 0

Which one of the following is an absorbable antacid?

Options :

1. Aluminium phosphate
2. Calcium carbonate
3. Sodium carbonate
4. Magnesium oxide

Question Number : 29 Question Id : 3909004949 Question Type : MCQ Option Shuffling : Yes Display Question Number : Yes  
Single Line Question Option : No Option Orientation : Vertical

Correct Marks : 1 Wrong Marks : 0

In mouthwashes, potassium permanganate is responsible for

Options :

1. mild antiseptic and astringent action
2. irrigation and antacid
3. astringent and de-sensitizing agent
4. astringent and anti-infective action

Question Number : 30 Question Id : 3909004950 Question Type : MCQ Option Shuffling : Yes Display Question Number : Yes  
Single Line Question Option : No Option Orientation : Vertical

Correct Marks : 1 Wrong Marks : 0

Which of the following is NOT TRUE for imatinib?

Options :

1. Its an anticancer drug
2. It has very poor selective toxicity profile
3. It inhibits BCR-Abl kinase inhibitor
4. It contains a piperazine ring

Question Number : 31 Question Id : 3909004951 Question Type : MCQ Option Shuffling : Yes Display Question Number : Yes  
Single Line Question Option : No Option Orientation : Vertical

Correct Marks : 1 Wrong Marks : 0

Which of the following is not used in the synthesis of clozapine?

Options :

1. Anthranilic acid
2. 1,4-dichloro-2-nitrobenzene
3. Imidazole
4. N-methylpiperazine

Question Number : 32 Question Id : 3909004952 Question Type : MCQ Option Shuffling : Yes Display Question Number : Yes  
Single Line Question Option : No Option Orientation : Vertical  
Correct Marks : 1 Wrong Marks : 0

Fluconazole has \_\_\_\_\_ unit in its structure.

Options :

1. imidazole
2. triazole
3. oxazole
4. pyrazole

Question Number : 33 Question Id : 3909004953 Question Type : MCQ Option Shuffling : Yes Display Question Number : Yes  
Single Line Question Option : No Option Orientation : Vertical  
Correct Marks : 1 Wrong Marks : 0

The heterocycle present in Atropine is \_\_\_\_\_

Options :

1. azabicyclo[3.2.1]octane
2. azabicyclo[2.2.1]octane
3. azabicyclo[3.2.2]octane
4. azabicyclo[3.2.3]octane

Question Number : 34 Question Id : 3909004954 Question Type : MCQ Option Shuffling : Yes Display Question Number : Yes  
Single Line Question Option : No Option Orientation : Vertical  
Correct Marks : 1 Wrong Marks : 0

\_\_\_\_\_ is widely used for treating myasthenia gravis

Options :

1. Carbachol
2. Pyridostigmine
3. Succinyl choline
4. Propantheline

Question Number : 35 Question Id : 3909004955 Question Type : MCQ Option Shuffling : Yes Display Question Number : Yes  
Single Line Question Option : No Option Orientation : Vertical

Correct Marks : 1 Wrong Marks : 0

The immediate oxidation product of arachidonic acid by COX is \_\_\_\_\_

Options :

1. PGG<sub>2</sub>
2. PGF<sub>2</sub>
3. PGE<sub>2</sub>
4. PGI<sub>2</sub>

Question Number : 36 Question Id : 3909004956 Question Type : MCQ Option Shuffling : Yes Display Question Number : Yes  
Single Line Question Option : No Option Orientation : Vertical

Correct Marks : 1 Wrong Marks : 0

Calamine contains \_\_\_\_\_

Options :

1. 97% ZnO
2. 99% ZnO
3. 93% ZnO
4. 95% ZnO

Question Number : 37 Question Id : 3909004957 Question Type : MCQ Option Shuffling : Yes Display Question Number : Yes  
Single Line Question Option : No Option Orientation : Vertical

Correct Marks : 1 Wrong Marks : 0



Bedaquiline, an anti TB drug acts by inhibiting \_\_\_\_\_

Options :

1. protein synthesis
2. DNA synthesis
3. oxidative phosphorylation
4. cell wall synthesis

Question Number : 38 Question Id : 3909004958 Question Type : MCQ Option Shuffling : Yes Display Question Number : Yes  
Single Line Question Option : No Option Orientation : Vertical

Correct Marks : 1 Wrong Marks : 0

Modification of n-propylamine side chain of promazine to isopropylamine changes its activity from antipsychotic to \_\_\_\_\_

Options :

1. antidiabetic
2. anticancer
3. antihypertensive
4. antihistamine

Question Number : 39 Question Id : 3909004959 Question Type : MCQ Option Shuffling : Yes Display Question Number : Yes  
Single Line Question Option : No Option Orientation : Vertical

Correct Marks : 1 Wrong Marks : 0

By addition of which of the following groups, the structure of morphine modifies to diamorphine?

Options :

1. One methyl group
2. Two methyl groups
3. Two acetyl groups
4. Two hydroxyl groups



Question Number : 40 Question Id : 3909004960 Question Type : MCQ Option Shuffling : Yes Display Question Number : Yes  
Single Line Question Option : No Option Orientation : Vertical

Correct Marks : 1 Wrong Marks : 0

Molecules with physical and chemical similarities producing broadly similar pharmacological properties are known as

Options :

1. pharmacophores
2. bioisosters
3. atropisomers
4. rotamers

Question Number : 41 Question Id : 3909004961 Question Type : MCQ Option Shuffling : Yes Display Question Number : Yes  
Single Line Question Option : No Option Orientation : Vertical

Correct Marks : 1 Wrong Marks : 0

General structure of barbiturates is \_\_\_\_\_

Options :

1. 4,5-disubstituted barbituric acid
2. 4,4-disubstituted barbituric acid
3. 5,5-disubstituted barbituric acid
4. 5,6-disubstituted barbituric acid

Question Number : 42 Question Id : 3909004962 Question Type : MCQ Option Shuffling : Yes Display Question Number : Yes  
Single Line Question Option : No Option Orientation : Vertical

Correct Marks : 1 Wrong Marks : 0

Which of the following is NOT a tricyclic antidepressant?

Options :

1. Tranylcypromine
2. Imipramine
3. Chlorimipramine
4. Trimipramine

Question Number : 43 Question Id : 3909004963 Question Type : MCQ Option Shuffling : Yes Display Question Number : Yes  
Single Line Question Option : No Option Orientation : Vertical

Correct Marks : 1 Wrong Marks : 0

Which of the following ring is essential for antianginal activity of dihydro pyridines?

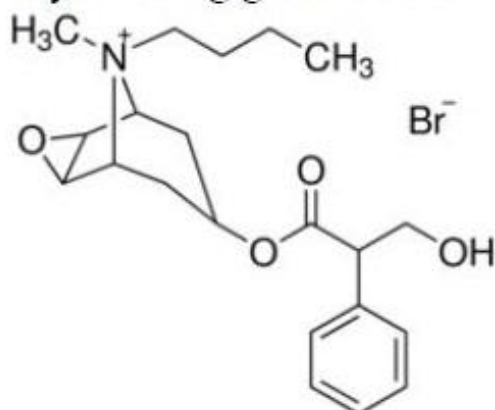
Options :

1. 2,3-dihydropyridine
2. 2,4-dihydropyridine
3. 1,4-dihydropyridine
4. 1,3-dihydropyridine

Question Number : 44 Question Id : 3909004964 Question Type : MCQ Option Shuffling : Yes Display Question Number : Yes  
Single Line Question Option : No Option Orientation : Vertical

Correct Marks : 1 Wrong Marks : 0

Identify the drug given below



Options :

1. Pralidoxime
2. Buscopine
3. Benztropine
4. Clinidium bromide

Question Number : 45 Question Id : 3909004965 Question Type : MCQ Option Shuffling : Yes Display Question Number : Yes  
Single Line Question Option : No Option Orientation : Vertical

Correct Marks : 1 Wrong Marks : 0

Pick the wrong statement about phenopufen

Options :

1. S (+) is active
2. Undergoes Hydroxylation
3. Antiplatelet activity as side effect
4. Contains 1-oxo iso indole ring

Question Number : 46 Question Id : 3909004966 Question Type : MCQ Option Shuffling : Yes Display Question Number : Yes  
Single Line Question Option : No Option Orientation : Vertical

Correct Marks : 1 Wrong Marks : 0

The characteristic feature of all systems prepared on tie line in a phase diagram at equilibrium will \_\_\_\_\_

Options :

1. separate into phases of constant composition
2. separate into phases of unequal composition
3. separate into three layers
4. stay as a single phase

Question Number : 47 Question Id : 3909004967 Question Type : MCQ Option Shuffling : Yes Display Question Number : Yes  
Single Line Question Option : No Option Orientation : Vertical

Correct Marks : 1 Wrong Marks : 0

When refractive index is indicated by the letter n, molecular weight of the compound is indicated by the letter M, and density of the material is indicated by  $\rho$ ; then molar refraction R of a compound is expressed as

Options :

1. 
$$R = \frac{n^2 + 1}{n^2 + 2} \left( \frac{M}{\rho} \right)$$

2. 
$$R = \frac{n^2 - 1}{n^2 - 2} \left( \frac{M}{\rho} \right)$$

3. 
$$R = \frac{n^2 - 1}{n^2 + 2} \left( \frac{M}{\rho} \right)$$

$$R = \frac{n-1}{n+2} \left( \frac{M}{e} \right)$$

4.

Question Number : 48 Question Id : 3909004968 Question Type : MCQ Option Shuffling : Yes Display Question Number : Yes  
Single Line Question Option : No Option Orientation : Vertical

Correct Marks : 1 Wrong Marks : 0

Which of the following methods is used for size determination of particles in the size range of 1000  $\mu\text{m}$  to 2000  $\mu\text{m}$ ?

Options :

1. Electron microscopy
2. Ultracentrifuge
3. Adsorption
4. Sieving

Question Number : 49 Question Id : 3909004969 Question Type : MCQ Option Shuffling : Yes Display Question Number : Yes  
Single Line Question Option : No Option Orientation : Vertical

Correct Marks : 1 Wrong Marks : 0

The average molecular weight of dextran, which is used as a plasma extender, is about \_\_\_\_\_ Da

Options :

1. 40,000
2. 1,00,000
3. 10,000
4. 70,000

Question Number : 50 Question Id : 3909004970 Question Type : MCQ Option Shuffling : Yes Display Question Number : Yes  
Single Line Question Option : No Option Orientation : Vertical

Correct Marks : 1 Wrong Marks : 0

The following compound is an example of a cationic type of association colloid:

Options :

1. Sodium Lauryl Sulphate



2. Cetyl Trimethyl ammonium bromide
3. Polyoxyethylene lauryl ether
4. Dimethyl dodecyl ammonio propane sulfonate

Question Number : 51 Question Id : 3909004971 Question Type : MCQ Option Shuffling : Yes Display Question Number : Yes  
Single Line Question Option : No Option Orientation : Vertical

Correct Marks : 1 Wrong Marks : 0

How much sodium chloride is required to render 100 ml of a 1 percent solution of apomorphine hydrochloride isotonic with blood serum? A 1% solution of the drug has a freezing point lowering of  $0.08^\circ$ . A 1% solution of sodium chloride has a freezing point lowering of  $0.58^\circ$ .

Options :

1. 0.76 %
2. 0.9%
3. 0.72%
4. 1%

Question Number : 52 Question Id : 3909004972 Question Type : MCQ Option Shuffling : Yes Display Question Number : Yes  
Single Line Question Option : No Option Orientation : Vertical

Correct Marks : 1 Wrong Marks : 0

100 grams of a powder containing 8 percent of substance X are to be prepared from powder containing 10% of X and powder containing 2% of X. Calculate how many grams each of the 10% powder and the 2% powder are to be taken.

Options :

1. 50 grams of 10 percent powder and 50 grams of 2% powder
2. 25 grams of 10 percent powder and 75 grams of 2 percent powder
3. 75 grams of the 10 percent powder and 25 grams of the 2 percent powder
4. 40 grams of the 10 percent powder and 60 grams of the 2 percent powder

Question Number : 53 Question Id : 3909004973 Question Type : MCQ Option Shuffling : Yes Display Question Number : Yes  
Single Line Question Option : No Option Orientation : Vertical

Correct Marks : 1 Wrong Marks : 0

The surfactant that is useful in the preparation of topical products, oral products and parenteral products is \_\_\_\_\_

Options :

1. lecithin
2. soap
3. alkoxyalkylamine
4. polyoxyethylene alkyl ether

Question Number : 54 Question Id : 3909004974 Question Type : MCQ Option Shuffling : Yes Display Question Number : Yes  
Single Line Question Option : No Option Orientation : Vertical

Correct Marks : 1 Wrong Marks : 0

Oil separation in ophthalmic ointments can be prevented by the addition of \_\_\_\_\_

Options :

1. stearic acid
2. glycerin
3. microcrystalline wax
4. cetyl alcohol

Question Number : 55 Question Id : 3909004975 Question Type : MCQ Option Shuffling : Yes Display Question Number : Yes  
Single Line Question Option : No Option Orientation : Vertical

Correct Marks : 1 Wrong Marks : 0

The following is the acceptance limit of dissolution as per the Indian Pharmacopoeia, when tablets are tested for dissolution in stage 2 (when 6+6 tablets) are tested:  
Average of 12 tablets (stage 1 and stage 2) is equal to or greater than the amount of dissolved active drug specified in individual monograph expressed as percent of the stated amount and no tablet is less than the amount of drug specified in individual monograph, expressed as a percent of stated amount by:

Options :

1. -10%



2. -15%

3. -20%

4. -5%

Question Number : 56 Question Id : 3909004976 Question Type : MCQ Option Shuffling : Yes Display Question Number : Yes  
Single Line Question Option : No Option Orientation : Vertical

Correct Marks : 1 Wrong Marks : 0

Which type of glass containers are used for the storage of buffered and unbuffered aqueous solutions?

Options :

1. highly resistant borosilicate glass

2. treated soda lime glass

3. soda lime glass

4. general purpose soda lime glass

Question Number : 57 Question Id : 3909004977 Question Type : MCQ Option Shuffling : Yes Display Question Number : Yes  
Single Line Question Option : No Option Orientation : Vertical

Correct Marks : 1 Wrong Marks : 0

The reducing agent which is used as an anti-oxidant in sterile products is \_\_\_\_\_

Options :

1. tartaric acid

2. tocopherol

3. sodium metabisulfite

4. ethylene diamine tetraacetic acid salt

Question Number : 58 Question Id : 3909004978 Question Type : MCQ Option Shuffling : Yes Display Question Number : Yes  
Single Line Question Option : No Option Orientation : Vertical

Correct Marks : 1 Wrong Marks : 0

The Wurster apparatus is used in the preparation of \_\_\_\_\_

Options :

1. parenterals
2. suppositories
3. nasal preparations
4. microcapsules

Question Number : 59 Question Id : 3909004979 Question Type : MCQ Option Shuffling : Yes Display Question Number : Yes  
Single Line Question Option : No Option Orientation : Vertical

Correct Marks : 1 Wrong Marks : 0

Which of the following compounds is used as buffering agent in the corticosteroid cream bases?

Options :

1. Citric acid
2. Polysorbate 80
3. Cetyl alcohol
4. Cetostearyl alcohol

Question Number : 60 Question Id : 3909004980 Question Type : MCQ Option Shuffling : Yes Display Question Number : Yes  
Single Line Question Option : No Option Orientation : Vertical

Correct Marks : 1 Wrong Marks : 0

The rate at which a drug is filtered in the glomeruli is:

Options :

1. equal to the concentration of unbound drug in plasma multiplied by Glomerular filtration rate (GFR)
2. equal to the concentration of bound drug in plasma multiplied by Glomerular filtration rate (GFR)
3. equal to the concentration of unbound drug in plasma
4. equal to the glomerular filtration rate (GFR)

Question Number : 61 Question Id : 3909004981 Question Type : MCQ Option Shuffling : Yes Display Question Number : Yes  
Single Line Question Option : No Option Orientation : Vertical

Correct Marks : 1 Wrong Marks : 0

The most important binding protein in plasma for acidic drugs is \_\_\_\_\_

Options :

1.  $\alpha_1$ -acid glycoprotein
2. globulin
3. albumin
4. glycoprotein

Question Number : 62 Question Id : 3909004982 Question Type : MCQ Option Shuffling : Yes Display Question Number : Yes  
Single Line Question Option : No Option Orientation : Vertical

Correct Marks : 1 Wrong Marks : 0

For drugs intended for topical application; for a given vehicle, the highest driving force for absorption is obtained when the drug concentration in the vehicle

Options :

1. is equal to half its solubility
2. equals its solubility
3. equals twice its solubility
4. is much less than its solubility

Question Number : 63 Question Id : 3909004983 Question Type : MCQ Option Shuffling : Yes Display Question Number : Yes  
Single Line Question Option : No Option Orientation : Vertical

Correct Marks : 1 Wrong Marks : 0

Blood flow to the lungs is approximately

Options :

1. equal to the blood flow to the liver
2. twice the blood flow to the liver
3. three times the blood flow to the liver
4. four times the blood flow to the liver

Question Number : 64 Question Id : 3909004984 Question Type : MCQ Option Shuffling : Yes Display Question Number : Yes  
Single Line Question Option : No Option Orientation : Vertical



Correct Marks : 1 Wrong Marks : 0

Two model parameters, elimination constant  $K$  and volume of distribution  $V_d$  can be used to describe a

Options :

1. one compartment model
2. two compartment model
3. three compartment model
4. bioavailability

Question Number : 65 Question Id : 3909004985 Question Type : MCQ Option Shuffling : Yes Display Question Number : Yes  
Single Line Question Option : No Option Orientation : Vertical

Correct Marks : 1 Wrong Marks : 0

Renal clearance is defined as:

Options :

1. urinary drug excretion rate
2. urinary drug excretion rate multiplied by plasma drug concentration
3. urinary drug excretion rate divided by plasma concentration
4. plasma concentration divided by urinary drug excretion rate

Question Number : 66 Question Id : 3909004986 Question Type : MCQ Option Shuffling : Yes Display Question Number : Yes  
Single Line Question Option : No Option Orientation : Vertical

Correct Marks : 1 Wrong Marks : 0

Which of the following is not a characteristic feature of drugs that follow non-linear kinetics?

Options :

1. The elimination half life changes as dose is increased
2. The area under the curve is proportional to the amount of bioavailable drug
3. The saturation of capacity limited processes is affected by other drugs that require the same enzyme

4. The composition of the metabolites of the drug may be affected by a change in dose

Question Number : 67 Question Id : 3909004987 Question Type : MCQ Option Shuffling : Yes Display Question Number : Yes  
Single Line Question Option : No Option Orientation : Vertical  
Correct Marks : 1 Wrong Marks : 0

P-glycoprotein is important in \_\_\_\_\_

Options :

1. determining bioequivalence
2. determining drug distribution
3. determining drug elimination
4. determining linearity in pharmacokinetics

Question Number : 68 Question Id : 3909004988 Question Type : MCQ Option Shuffling : Yes Display Question Number : Yes  
Single Line Question Option : No Option Orientation : Vertical  
Correct Marks : 1 Wrong Marks : 0

The comparison of the bioavailability of the active drug in the systemic circulation following extravascular administration with the bioavailability of the same drug following intravenous administration gives

Options :

1. relative bioavailability
2. bioequivalence
3. absolute bioavailability
4. pharmaceutical availability

Question Number : 69 Question Id : 3909004989 Question Type : MCQ Option Shuffling : Yes Display Question Number : Yes  
Single Line Question Option : No Option Orientation : Vertical  
Correct Marks : 1 Wrong Marks : 0

Bioequivalence is generally determined if the 90% confidence intervals for  $C_{max}$  and AUC fall within these limits of the reference listed drug based on log transformation of the data:

Options :

1. 80% to 125%

2. 80% to 130%
3. 90% to 140%
4. 70% to 130%

Question Number : 70 Question Id : 3909004990 Question Type : MCQ Option Shuffling : Yes Display Question Number : Yes  
Single Line Question Option : No Option Orientation : Vertical

Correct Marks : 1 Wrong Marks : 0

Halophiles are microorganisms that are able to survive

Options :

1. Low temperatures
2. High pressure
3. Low pH
4. High salt

Question Number : 71 Question Id : 3909004991 Question Type : MCQ Option Shuffling : Yes Display Question Number : Yes  
Single Line Question Option : No Option Orientation : Vertical

Correct Marks : 1 Wrong Marks : 0

Example for vaccine containing dead bacteria is \_\_\_\_\_

Options :

1. BCG
2. small pox
3. tetanus
4. cholera

Question Number : 72 Question Id : 3909004992 Question Type : MCQ Option Shuffling : Yes Display Question Number : Yes  
Single Line Question Option : No Option Orientation : Vertical

Correct Marks : 1 Wrong Marks : 0

Moist heat sterilization for vaccines is done at a temperature of

Options :

1. 40-50°C



2. 55-60°C
3. 60-70°C
4. 70-80°C

Question Number : 73 Question Id : 3909004993 Question Type : MCQ Option Shuffling : Yes Display Question Number : Yes  
Single Line Question Option : No Option Orientation : Vertical

Correct Marks : 1 Wrong Marks : 0

The adult dose is 60 mg and the weight of child is 14 kg. Calculate dose of child by Clark's formula

Options :

1. 24 mg
2. 12 mg
3. 21 mg
4. 14 mg

Question Number : 74 Question Id : 3909004994 Question Type : MCQ Option Shuffling : Yes Display Question Number : Yes  
Single Line Question Option : No Option Orientation : Vertical

Correct Marks : 1 Wrong Marks : 0

In Arrhenius plot for predicting drug stability at room temperature, the graph is

Options :

1. K vs.  $1/T$
2.  $\log K$  vs. T
3.  $\log K$  vs.  $1/T$
4.  $\log C$  vs.  $1/T$

Question Number : 75 Question Id : 3909004995 Question Type : MCQ Option Shuffling : Yes Display Question Number : Yes  
Single Line Question Option : No Option Orientation : Vertical

Correct Marks : 1 Wrong Marks : 0

Oral polio vaccine is absorbed by

Options :

1. passive diffusion
2. passive facilitated diffusion
3. ion pair transport
4. pinocytosis

Question Number : 76 Question Id : 3909004996 Question Type : MCQ Option Shuffling : Yes Display Question Number : Yes  
Single Line Question Option : No Option Orientation : Vertical

Correct Marks : 1 Wrong Marks : 0

A drug that has been prepared, packed or stored under insanitary conditions whereby it may have been rendered injurious to health is called as \_\_\_\_\_

Options :

1. misbranded drug
2. spurious drug
3. adulterated drug
4. sub-standard drug

Question Number : 77 Question Id : 3909004997 Question Type : MCQ Option Shuffling : Yes Display Question Number : Yes  
Single Line Question Option : No Option Orientation : Vertical

Correct Marks : 1 Wrong Marks : 0

A manufacturer of drugs shall maintain batch manufacturing records for each batch of the drugs produced as per Schedule \_\_\_\_\_ of the Drugs and Cosmetics Act:

Options :

1. U
2. V
3. P
4. T

Question Number : 78 Question Id : 3909004998 Question Type : MCQ Option Shuffling : Yes Display Question Number : Yes  
Single Line Question Option : No Option Orientation : Vertical

Correct Marks : 1 Wrong Marks : 0

The particulars of quantities of active ingredients and name and address of the manufacturer are to be placed on the label of the following category of drugs, as per the Drugs and Cosmetics Act:

Options :

1. Schedule G drugs
2. Schedule C drugs
3. Schedule X drugs
4. Patent and proprietary medicines

Question Number : 79 Question Id : 3909004999 Question Type : MCQ Option Shuffling : Yes Display Question Number : Yes  
Single Line Question Option : No Option Orientation : Vertical

Correct Marks : 1 Wrong Marks : 0

As per the definition of opium under the Narcotic Drugs and Psychotropic Substances Act, any mixture to satisfy the definition must include:

Options :

1. more than 0.1% of morphine
2. more than 0.4% of morphine
3. more than 0.2% of morphine
4. more than 1% of morphine

Question Number : 80 Question Id : 3909005000 Question Type : MCQ Option Shuffling : Yes Display Question Number : Yes  
Single Line Question Option : No Option Orientation : Vertical

Correct Marks : 1 Wrong Marks : 0

As per the offences and penalties section of the Narcotic Drugs and Psychotropic Substances Act, the punishment for first conviction, in relation to coca plant and coca leaves is \_\_\_\_\_

Options :

1. rigorous imprisonment for not less than 10 to 25 years and fine not less than Rs. One lakh
2. rigorous imprisonment for not less than 2 years to 10 years and fine not less than Rs. One lakh

rigorous imprisonment for not less than 5 to 10 years and fine not less than

3. Rs. One lakh

rigorous imprisonment for not less than 1 to 5 years and fine not less than

4. Rs. Two lakhs

Question Number : 81 Question Id : 3909005001 Question Type : MCQ Option Shuffling : Yes Display Question Number : Yes  
Single Line Question Option : No Option Orientation : Vertical

Correct Marks : 1 Wrong Marks : 0

\_\_\_\_\_ is a potent CYP3A4 inhibitor?

Options :

1. Clarithromycin

2. Cortisol

3. Rifampicin

4. Carbamazepine

Question Number : 82 Question Id : 3909005002 Question Type : MCQ Option Shuffling : Yes Display Question Number : Yes  
Single Line Question Option : No Option Orientation : Vertical

Correct Marks : 1 Wrong Marks : 0

Which of the following are therapeutic exploratory trials?

Options :

1. Phase I trials

2. Phase II trials

3. Phase III trials

4. Phase IV trials

Question Number : 83 Question Id : 3909005003 Question Type : MCQ Option Shuffling : Yes Display Question Number : Yes  
Single Line Question Option : No Option Orientation : Vertical

Correct Marks : 1 Wrong Marks : 0

Identify the beneficial drug interaction.

Options :



1. Erythromycin + Digoxin
2. Adrenaline + xylocaine
3. Ramipril+Haloperidol
4. MAOI + Fluoxetine

Question Number : 84 Question Id : 3909005004 Question Type : MCQ Option Shuffling : Yes Display Question Number : Yes  
Single Line Question Option : No Option Orientation : Vertical

Correct Marks : 1 Wrong Marks : 0

TDM is not required for \_\_\_\_\_ drug.

Options :

1. phenytoin
2. cyclosporin
3. diazepam
4. theophylline

Question Number : 85 Question Id : 3909005005 Question Type : MCQ Option Shuffling : Yes Display Question Number : Yes  
Single Line Question Option : No Option Orientation : Vertical

Correct Marks : 1 Wrong Marks : 0

Cerebral malaria is treated by \_\_\_\_\_

Options :

1. proguanil
2. pyrimethamine
3. quinine
4. mefloquine

Question Number : 86 Question Id : 3909005006 Question Type : MCQ Option Shuffling : Yes Display Question Number : Yes  
Single Line Question Option : No Option Orientation : Vertical

Correct Marks : 1 Wrong Marks : 0

The adverse effect of insulin is \_\_\_\_\_

Options :

1. weight loss
2. weight gain
3. bloating
4. flatulence

Question Number : 87 Question Id : 3909005007 Question Type : MCQ Option Shuffling : Yes Display Question Number : Yes  
Single Line Question Option : No Option Orientation : Vertical

Correct Marks : 1 Wrong Marks : 0

\_\_\_\_\_ causes histamine release from mast cells.

Options :

1. Paracetamol
2. Adrenaline
3. Morphine
4. Theophylline

Question Number : 88 Question Id : 3909005008 Question Type : MCQ Option Shuffling : Yes Display Question Number : Yes  
Single Line Question Option : No Option Orientation : Vertical

Correct Marks : 1 Wrong Marks : 0

Skeletal muscle relaxants are used in which of the processes?

Options :

1. EEG
2. ECG
3. ECT
4. CT SCAN

Question Number : 89 Question Id : 3909005009 Question Type : MCQ Option Shuffling : Yes Display Question Number : Yes  
Single Line Question Option : No Option Orientation : Vertical

Correct Marks : 1 Wrong Marks : 0

\_\_\_\_\_ is used as a mucolytic agent.

Options :



1. Codeine
2. Ambroxol
3. Aspirin
4. Theophylline

Question Number : 90 Question Id : 3909005010 Question Type : MCQ Option Shuffling : Yes Display Question Number : Yes  
Single Line Question Option : No Option Orientation : Vertical

Correct Marks : 1 Wrong Marks : 0

Which of the following belong to GPCRs?

Options :

1. N<sub>M</sub> receptors
2. GABA<sub>A</sub> receptors
3. 5 HT<sub>3</sub> receptors
4. GABA<sub>B</sub> receptors

Question Number : 91 Question Id : 3909005011 Question Type : MCQ Option Shuffling : Yes Display Question Number : Yes  
Single Line Question Option : No Option Orientation : Vertical

Correct Marks : 1 Wrong Marks : 0

Which of the following antibiotic blocks the cell wall synthesis for causing bactericidal effect?

Options :

1. Piperacillin
2. Ciprofloxacin
3. Minocycline
4. Azithromycin

Question Number : 92 Question Id : 3909005012 Question Type : MCQ Option Shuffling : Yes Display Question Number : Yes  
Single Line Question Option : No Option Orientation : Vertical

Correct Marks : 1 Wrong Marks : 0

The sedative hypnotic useful as an antiemetic agent for the treatment of vomiting in cancer chemotherapy

Options :

1. Lorazepam
2. Clonazepam
3. Diazepam
4. Chlordiazepoxide

Question Number : 93 Question Id : 3909005013 Question Type : MCQ Option Shuffling : Yes Display Question Number : Yes  
Single Line Question Option : No Option Orientation : Vertical

Correct Marks : 1 Wrong Marks : 0

Which one of the following statements explain the effect of p-Glycoprotein?

Options :

1. Decreases absorption by pumping drug into lumen
2. Decreases metabolism by pumping drug out of hepatocyte
3. Decreases excretion by tubular reabsorption at kidney
4. Increases Blood Brain Barrier Permeability of the drug

Question Number : 94 Question Id : 3909005014 Question Type : MCQ Option Shuffling : Yes Display Question Number : Yes  
Single Line Question Option : No Option Orientation : Vertical

Correct Marks : 1 Wrong Marks : 0

When starting an HIV infected patient on highly active antiretroviral therapy that contains efavirenz, which of the following would be most important to counsel the patient on?

Options :

1. Efavirenz should not be taken with a high fat meal as it can increase its absorption in the GI tract and cause some CNS side effects
2. Efavirenz is associated with the development of painful peripheral neuropathy in some patients

3. Efavirenz is a strong inhibitor of enzymes needed by other medications, thereby increasing the risk for drug-drug interactions
4. Efavirenz can cause a yellow of the skin in about 10% of patients but is not harmful

Question Number : 95 Question Id : 3909005015 Question Type : MCQ Option Shuffling : Yes Display Question Number : Yes  
Single Line Question Option : No Option Orientation : Vertical

Correct Marks : 1 Wrong Marks : 0

Allosteric antagonist acts by binding to the \_\_\_\_\_

Options :

1. same site as that of agonist and changes the affinity of the receptor
2. other site than agonist and changes the affinity of the receptor
3. same site as that of agonist and dissociates slowly
4. other site than agonist and dissociates slowly.

Question Number : 96 Question Id : 3909005016 Question Type : MCQ Option Shuffling : Yes Display Question Number : Yes  
Single Line Question Option : No Option Orientation : Vertical

Correct Marks : 1 Wrong Marks : 0

Which of the following anti cancer drugs doesn't cause pulmonary toxicity?

Options :

1. Bleomycin
2. Erlonitib
3. Oxaliplatin
4. Melphalan

Question Number : 97 Question Id : 3909005017 Question Type : MCQ Option Shuffling : Yes Display Question Number : Yes  
Single Line Question Option : No Option Orientation : Vertical

Correct Marks : 1 Wrong Marks : 0

Anti-alzheimer's drug rivastigmine is \_\_\_\_\_

Options :

1. long acting esterase inhibitor



2. short acting esterase inhibitor
3. long acting carbamoylating inhibitor
4. short acting carbamoylating inhibitor

Question Number : 98 Question Id : 3909005018 Question Type : MCQ Option Shuffling : Yes Display Question Number : Yes  
Single Line Question Option : No Option Orientation : Vertical  
Correct Marks : 1 Wrong Marks : 0

Bromocriptine is \_\_\_\_\_

Options :

1. D2 receptor agonist and D1 receptor antagonist
2. D2 receptor antagonist and D1 receptor agonist
3. D1, D2 receptor agonist and D3 receptor antagonist
4. D3 receptor agonist and D1, D2 receptor antagonist

Question Number : 99 Question Id : 3909005019 Question Type : MCQ Option Shuffling : Yes Display Question Number : Yes  
Single Line Question Option : No Option Orientation : Vertical  
Correct Marks : 1 Wrong Marks : 0

The drug of choice for trigeminal neuralgia is \_\_\_\_\_

Options :

1. aspirin
2. imipramine
3. carbamazepine
4. valproic acid

Question Number : 100 Question Id : 3909005020 Question Type : MCQ Option Shuffling : Yes Display Question Number : Yes  
Single Line Question Option : No Option Orientation : Vertical  
Correct Marks : 1 Wrong Marks : 0

Identify the difference between triiodothyronine and thyroxine.

Options :

1. It is more avidly bound to plasma proteins



2. It has a shorter plasma half life
3. It is less potent
4. It has a longer latency of action

Question Number : 101 Question Id : 3909005021 Question Type : MCQ Option Shuffling : Yes Display Question Number : Yes  
Single Line Question Option : No Option Orientation : Vertical

Correct Marks : 1 Wrong Marks : 0

Quantitative estimation of oxygen is done by using \_\_\_\_\_

Options :

1. Hempel burette
2. Kjheldahl apparatus
3. Gutzeit apparatus
4. Hempel pipette

Question Number : 102 Question Id : 3909005022 Question Type : MCQ Option Shuffling : Yes Display Question Number : Yes  
Single Line Question Option : No Option Orientation : Vertical

Correct Marks : 1 Wrong Marks : 0

Choose the correct statement relating to labile complex and inert complexe in complexometric titrations.

Options :

1. Labile complexes are formed instantly while inert complexes take hours or days in their formation
2. Labile complexes take much longer time in formation than inert complexes
3. Labile complexes get hydrolyzed in water immediately while inert complexes are stable in water
4. Labile complexes get decomposed on mild heating in aqueous solutions while inert complexes do not decompose

Question Number : 103 Question Id : 3909005023 Question Type : MCQ Option Shuffling : Yes Display Question Number : Yes  
Single Line Question Option : No Option Orientation : Vertical

Correct Marks : 1 Wrong Marks : 0

Identify the bulk property detector used in HPLC.

Options :

1. Fluorescence detector
2. Photo diode array detector
3. Refractive index detector
4. UV detector

Question Number : 104 Question Id : 3909005024 Question Type : MCQ Option Shuffling : Yes Display Question Number : Yes  
Single Line Question Option : No Option Orientation : Vertical

Correct Marks : 1 Wrong Marks : 0

The peak at  $m/z$  91 in the mass spectrum for alkylbenzenes is due to which of the following?

Options :

1. Alpha fission
2. Mc-Laffartey rearrangement
3. Retro Diels-Alder rearrangement
4. Tropylium ion formation

Question Number : 105 Question Id : 3909005025 Question Type : MCQ Option Shuffling : Yes Display Question Number : Yes  
Single Line Question Option : No Option Orientation : Vertical

Correct Marks : 1 Wrong Marks : 0

Hypochromic effect implies \_\_\_\_\_

Options :

1. increase in intensity of absorption
2. decrease in intensity of absorption
3. increase in wavelength of absorption
4. decrease in wavelength of absorption

Question Number : 106 Question Id : 3909005026 Question Type : MCQ Option Shuffling : Yes Display Question Number : Yes  
Single Line Question Option : No Option Orientation : Vertical

Correct Marks : 1 Wrong Marks : 0

Primary filter in fluorimeter is used to \_\_\_\_\_

Options :

1. absorb UV & transmit visible radiation
2. transmit UV & absorb visible radiation
3. transmit UV & visible radiations
4. absorb UV & visible radiations

Question Number : 107 Question Id : 3909005027 Question Type : MCQ Option Shuffling : Yes Display Question Number : Yes  
Single Line Question Option : No Option Orientation : Vertical

Correct Marks : 1 Wrong Marks : 0

Flame photometry involves excitation of \_\_\_\_\_

Options :

1. ions
2. solid particles
3. neutral atoms
4. neutral atoms in ground state

Question Number : 108 Question Id : 3909005028 Question Type : MCQ Option Shuffling : Yes Display Question Number : Yes  
Single Line Question Option : No Option Orientation : Vertical

Correct Marks : 1 Wrong Marks : 0

The decomposition of  $\text{H}_2\text{O}_2$  is favoured by \_\_\_\_\_

Options :

1. acidic medium
2. alkaline medium
3. neutral medium
4. acidic and alkaline medium

Question Number : 109 Question Id : 3909005029 Question Type : MCQ Option Shuffling : Yes Display Question Number : Yes  
Single Line Question Option : No Option Orientation : Vertical

Correct Marks : 1 Wrong Marks : 0

Which of the following aprotic solvents is used in nonaqueous titrimetry?

Options :

1. Glacial acetic acid
2. Methanol
3. Benzylalcohol
4. Toluene

Question Number : 110 Question Id : 3909005030 Question Type : MCQ Option Shuffling : Yes Display Question Number : Yes  
Single Line Question Option : No Option Orientation : Vertical

Correct Marks : 1 Wrong Marks : 0

The identity of two samples can be compared based on superimposing their \_\_\_\_\_

Options :

1. Mass spectra
2. UV spectra
3. NMR spectra
4. HPLC chromatogram

Question Number : 111 Question Id : 3909005031 Question Type : MCQ Option Shuffling : Yes Display Question Number : Yes  
Single Line Question Option : No Option Orientation : Vertical

Correct Marks : 1 Wrong Marks : 0

Random error is considered as \_\_\_\_\_

Options :

1. determinate error
2. procedural error
3. indeterminate error
4. methodic error

Question Number : 112 Question Id : 3909005032 Question Type : MCQ Option Shuffling : Yes Display Question Number : Yes  
Single Line Question Option : No Option Orientation : Vertical

Correct Marks : 1 Wrong Marks : 0



Calibrating an instrument can bring about \_\_\_\_\_

Options :

1. precision
2. accuracy
3. repeatability
4. selectivity

Question Number : 113 Question Id : 3909005033 Question Type : MCQ Option Shuffling : Yes Display Question Number : Yes  
Single Line Question Option : No Option Orientation : Vertical

Correct Marks : 1 Wrong Marks : 0

Ziesel's method is used for estimation of total \_\_\_\_\_ content.

Options :

1. hydroxyl
2. methoxyl
3. methyl
4. sulphur

Question Number : 114 Question Id : 3909005034 Question Type : MCQ Option Shuffling : Yes Display Question Number : Yes  
Single Line Question Option : No Option Orientation : Vertical

Correct Marks : 1 Wrong Marks : 0

The resolution in a typical ascending paper chromatography is based on \_\_\_\_\_

Options :

1. differential adsorption
2. ion exchange mechanism
3. partition principle
4. permeation principle

Question Number : 115 Question Id : 3909005035 Question Type : MCQ Option Shuffling : Yes Display Question Number : Yes  
Single Line Question Option : No Option Orientation : Vertical

Correct Marks : 1 Wrong Marks : 0

The concentration in Ilkovic equation is directly proportional to \_\_\_\_\_ current.

Options :

1. diffusion
2. migration
3. capacitance
4. residual

Question Number : 116 Question Id : 3909005036 Question Type : MCQ Option Shuffling : Yes Display Question Number : Yes  
Single Line Question Option : No Option Orientation : Vertical

Correct Marks : 1 Wrong Marks : 0

The polar compounds are selectively separated by \_\_\_\_\_ chromatography.

Options :

1. ion exchange
2. supercritical fluid
3. gel Filtration
4. gel permeation

Question Number : 117 Question Id : 3909005037 Question Type : MCQ Option Shuffling : Yes Display Question Number : Yes  
Single Line Question Option : No Option Orientation : Vertical

Correct Marks : 1 Wrong Marks : 0

Why quinine is nonfluorescent in 0.1M hydrochloric acid in spite of its high fluorescent in 0.05M sulphuric acid?

Options :

1. Quenching by chloride ion
2. Less dissociation in HCl
3. Low solubility in HCl
4. Stabilization by sulphate ion

Question Number : 118 Question Id : 3909005038 Question Type : MCQ Option Shuffling : Yes Display Question Number : Yes  
Single Line Question Option : No Option Orientation : Vertical

Correct Marks : 1 Wrong Marks : 0

Solvents used as mobile phase in GC should have \_\_\_\_\_

Options :

1. high flash points
2. low boiling points
3. high boiling points
4. high density

Question Number : 119 Question Id : 3909005039 Question Type : MCQ Option Shuffling : Yes Display Question Number : Yes  
Single Line Question Option : No Option Orientation : Vertical

Correct Marks : 1 Wrong Marks : 0

Calomel electrode is \_\_\_\_\_ electrode.

Options :

1. indicator
2. reference
3. sampling
4. calibration

Question Number : 120 Question Id : 3909005040 Question Type : MCQ Option Shuffling : Yes Display Question Number : Yes  
Single Line Question Option : No Option Orientation : Vertical

Correct Marks : 1 Wrong Marks : 0

Good Manufacturing Practices are the guidelines recommended by:

Options :

1. World Health Organization (WHO)
2. US FDA
3. Organization for Economic Cooperation and Development (OECD)
4. Drug Controller General of India (DCGI)