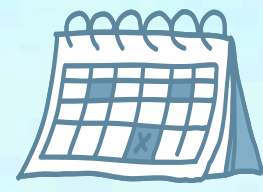


# Leh LADAKH

LH-07 - 13N / 14D  
SRINAGAR - DRAS - ALCHI - LEH - NUBRA - PANGONG  
- JISPA - MANALI



# TOUR DATES



June 2026	18, 30
July 2026	12, 24
August 2026	13, 27

# PLACES OF INTERESTS



# Tour Rates with group vehicle

EX. SRINAGAR

Per Couple	Rs. 1,86,000
Extra Adult	Rs. 81,000
Per Child (5-11 yrs) with Mattress	Rs. 78,000
Per Child (5-11 yrs) without Mattress	Rs. 57,000
Per Child Below 5 yrs with Seat	Rs. 50,500
Per Child Below 5 yrs without Seat	Rs. 21,000

DESTINATION (13 NIGHTS)	HOTEL
Srinagar (1N)	Snowland / Similar
Dras (2N)	Hotel D'Meadows / Similar
Alchi (1N)	Hotel Zimskhang
Leh (1N)	*Deskitsal (Deluxe Room) / Similar
Nubra (2N)	*Tent / Similar
Pangong (1N)	Cottage / Similar
Leh (2N)	*Deskitsal (Deluxe Room) / Similar
Jispa (1N)	Hotel Ibex / Similar
Manali (2N)	Hotel River Grand / Similar

**\*In Nubra Upgradation from Tent to Hotel will be charged @ 1500/- Per Couple per night**

**\*In Leh Hotel Deskitsal Room Upgradation Charges Suite Room - @Rs.2000 /- Per Couple Per night**

**\*If Roads of Nubra / Pangong gets closed, stay will be in any similar hotel in Leh. Route - Nubra-Leh-Pangong**

**\*If the Road from Nubra to Pangong will be open, then we will directly travel from Nubra to Pangong & then to Leh. (Subject to weather conditions & Managers instructions)**



Manali



Magnetic Hill Point



Pangong Lake



## DAY 1

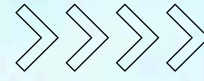
## ARRIVE SRINAGAR AIRPORT

Warm greetings to your Kashmir/Leh Ladakh Tour! Upon arriving Srinagar airport (till 2pm) meet our representative. Lunch, Dinner & Night halt at Srinagar.

## DAY 2

## SRINAGAR – DRAS

141 kms - Duration - 5/6 hrs approx



After breakfast we proceed on a journey through the densely wooded landscapes of Sonmarg & then towards Dras, known as the second coldest city in the world and often referred to as "The Gateway to Ladakh." Along the route, visit Zero Point and Zojila Pass. In the evening we enjoy a village walk. Night halt at Dras.

## DAY 3

## DRAS



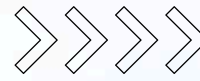
After breakfast, visit Muskoo Valley and Manman viewpoint. After lunch, explore the local attractions, including the Kargil War Memorial. This monument pays tribute to the historic success of Operation Vijay during the Indo-Pak war of 1999, honoring the martyrs who sacrificed their lives in defense of the country against intruders. Night stay at Dras.



## DAY 4

## DRAS - ALCHI

218 kms - Duration - 9/10 hrs approx

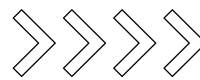


After breakfast, we leave for Alchi, enroute visiting the Museum & Aryan Valley, it is home to the Brokpas, an ethnic group considered to be a pure lineage of Aryans, making them one of the few remaining groups in the world with this distinction. Night stay at Alchi.

## DAY 5

## ALCHI - LEH

65 kms - Duration - 3/4 hrs approx

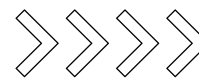


After breakfast, proceed towards Leh, making several stops along the way, visiting the Alchi Monastery (1100 yrs old, morning opens @ 8.30a.m), the confluence of River Sangam (Confluence of Indus right & Zaskar left), Magnetic Hill Point, and Pathar Sahib Gurudwara. Later, resume the journey toward Leh. Enjoy some leisure time after lunch in Leh. Night stay at Leh.

## DAY 6

## LEH - NUBRA

160 kms - Duration - 5/6 hrs approx



After breakfast, proceed towards Nubra Camp by passing through Khardungla Pass (18,380 feet). After lunch, visit Diskit Monastery 108 feet highest statue of Ladakh and enjoy a camel safari [not included in cost]. Guests have the option to enjoy an ATV bike ride [not included in cost]. Night halt at Nubra.



## DAY 7

### NUBRA – DAY TRIP TO TURTUK

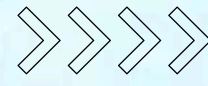
DISTANCE:- 90 KMS / DURATION:- 03 HRS APPROX. ONE WAY

After breakfast visit Museum & Turtuk village, known for its diverse varieties of fruits, especially apricots. Turtuk was previously under Pakistani control until the Indian Army captured the village during the 1971 war. This village stands as the final outpost of India's Ladakh and serves as one of the gateways to the Siachen Glacier. Night halt at Nubra.

150 kms - Duration - 5/6 hrs approx

## DAY 8

### NUBRA – PANGONG (VIA SHYOK VALLEY)

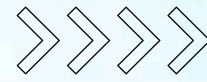


After breakfast, journey to explore Pangong Lake, the world's highest saltwater lake, which is shared by both India and China. Delight in the natural beauty of the lake. Spend the night at Pangong Lake, immersed in its breathtaking surroundings.

150 kms - Duration - 5/6 hrs approx

## DAY 9

### PANGONG - LEH (VIA CHANGLA PASS – 17688 FEET)

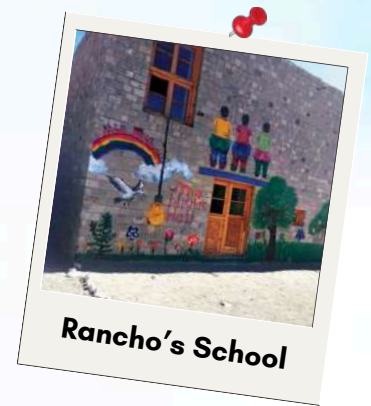


After breakfast proceed to Leh. Upon arriving day will be free for leisure & relaxing. Evening free for shopping. Night halt at Leh.

## DAY 10

### LEH

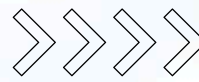
After breakfast we leave for sightseeing of Leh which includes the filming location of **Rancho's School** from the movie "3 idiots" and other sight seeing points like Shey, Thiksey & Sindhu Darshan. After lunch visit Shanti Stupa & Hall of Fame Military Museum & Sound and Light Show [included in the cost]. Night halt at Leh.



334 kms - Duration - 10 hrs approx

## DAY 11

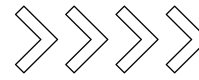
### LEH – JISPA



After breakfast Check out from your hotel with luggage and proceed to Jispa by Road. Enroute enjoy the natural beauty of Jispa. On arrival Check into your hotel and rest of the day is free for rest & Night stay at Jispa.

## DAY 12

### JISPA - MANALI



After breakfast check out from your hotel with Luggage and proceed to Manali by Road. Enroute you will enjoy the scenic beauty of Jispa-Manali Road with Snowclad Mountains around. On arrival check into your hotel and rest of the day is free for rest & Night stay at Manali.

## DAY 13

### MANALI: DAY TRIP TO KULLU

After breakfast visit Manikaran Temple, Vaishnodevi Temple – Kullu & Enjoy River Rafting (at your own) subject to group size & timing). Later proceed back to your hotel. Night halt at Manali. (Guest who wish to visit Rohtang Pass can skip Kullu & visit on their own. You can confirm your transportation services from Manali to Rohtang Pass and back through online portal of Himachal Pradesh Tourism in advance - [www.hrtchp.com](http://www.hrtchp.com)).

**DAY 14**

## **MANALI – CHANDIGARH DROP**

**300 KMS / DURATION:- 08/10 HRS APPROX**



After early breakfast checkout from your hotel with luggage and you will be dropped at Chandigarh airport to board your flight **[flights to be booked after 7pm]**, we hope you had a memorable experience during the tour conducted by Heena Tours & Travels. Safe travels and have a wonderful journey ahead!

**THIS TOUR STARTS WITH LUNCH ON DAY - 01 & CONCLUDES WITH BREAKFAST ON DAY - 14**



# Inclusions

- 13 Nights / 14 Days Hotel Accommodation
- All Meals with 'Heena Style' Exclusive services. **(PURE VEG)**
- All Transfers & Sightseeing by NON AC Tempo Traveler Subject to Group Size.
- Service of Caring Tour Manager.
- Mineral water during travelling.

# Exclusions

- Air / Train Fares
- Any Kind Of Personal Expenses like drinks, tips, rides, laundry, room heaters, insurance, etc.
- Anything not specified in inclusions
- **5% GST ( Tax subject to change as per Govt. Regulations)**

**\*HEENA TOURS & TRAVELS WILL NOT BE RESPONSIBLE IF THE FLIGHTS GETS DELAYED OR CANCELLED.**

**GUEST OPTING FOR THE PRIVATE INNOVA OPTION DOES NOT ENTAIL ANY ADDITIONAL FACILITIES THEY HAVE TO MAINTAIN COMMUNICATION WITH OUR TOUR MANAGER AND FOLLOW THE INSTRUCTIONS REGARDING MEAL TIMINGS AND THE ITINERARY.**



**BEFORE BOOKING THE TOUR PLEASE READ INSTRUCTIONS AND FACILITIES CAREFULLY OR VISIT OUR WEBSITE [WWW.HEENATOURS.IN](http://WWW.HEENATOURS.IN)**

# Travel Tips for Leh Ladakh

- Valid Photo Id (Aadhar Card/Driving License/Voter Id/Passport).
- In Certain Snow areas Gum Boots, Gloves & Long Jackets are available on rent. Our Manager can guide you regarding same.
- In case of any riots/political situation during tour please follow Managers instructions.
- Carry your Regular Basic medicines & Basic First Aid Kit with you.
- Only Post Paid i.e. Billing Network operates in Leh Ladakh & Kashmir. BSNL is best network.
- Asthma Patients are not advisable to travel to Leh Ladakh. Consult your doctor before going.
- Leh Ladakh is situated at a higher altitude, requiring your body to acclimatize. The body can adapt to the reduced oxygen levels. As you ascend, the air becomes thinner, and the available oxygen decreases. It requires time to do so. Experiencing symptoms like headaches, dizziness, loss of appetite, and vomiting on the first day is common, so there's no need to panic. It's crucial to allow your body the necessary time to adjust to the altitude.
- Drink plenty of water, don't run, jump & speak less, avoid overeating.
- Climate in Leh Ladakh is not predictable so you need to carry winter, summer & monsoon wears - Thermals, Pair of Gloves, Monkey Cap, Cotton, Sweater, Sun's Screen & Winter lotions (available in Leh local markets), lip balm, Sun glasses, comfortable Sports Shoes, Umbrella/Windcheater, Vicks, Camphor, Nilgiri etc.
- Carry Dark chocolates, Glucon-D / Electro Powder & Dry Fruits with you for long journeys.
- You can carry a compact oxygen cylinder with you from medical or can buy from Leh directly.

# Terms & Conditions

## **OUR FOOD:**

DURING THE TOUR WE WILL PROVIDE DELICIOUS, PURE VEGETARIAN / JAIN / SWAMI NARAYAN FOOD SPECIALLY PREPARED FOR YOU ACCORDING TO "HEENA STYLE" (WE PROVIDE BREAKFAST, LUNCH, EVENING TEA/COFFEE WITH LIGHT COOKIES AND DINNER WITH DRY MUNCHING DURING TRAVEL) PREPARED/COOKED BY OUR OWN EXPERT RAJASTHANI COOKS.

## **IMP NOTE:**

TO OPERATE THIS TOUR WITH OUR FULL KITCHEN FACILITIES/MAHARAJ FOOD, WE REQUIRE MINIMUM 08 TO 10 PASSENGERS TRAVELLING AT A TIME ON THAT PARTICULAR DATE, IF WE GET LESS NUMBER OF PASSENGERS AS MENTIONED ABOVE, THEN YOU WILL HAVE TO OPT FOR ANY ONE OF THE BELOW OPTIONS-

01 – YOU MAY SWITCH TO ANY OTHER SECTOR AS PER YOUR CHOICE OF DATE

02 – YOU MAY OPT FOR CUSTOMIZED PACKAGE (FIT) WITH HOTEL FOOD (BREAKFAST & DINNER) WITH SOME ADDITIONAL AMOUNT IF APPLICABLE.

\*WE ARE NOT RESPONSIBLE FOR ANY FLIGHT/TRAIN CANCELLATION CHARGES APPLICABLE TO YOU.

## **TRANSPORTATION:**

SEAT NUMBERS IN THE BUS ARE PROVIDED ON FIRST COME FIRST SERVE BASIS, AS PER THE BOOKING DATE AND THE SEAT NUMBERS REMAIN FIXED THROUGHOUT THE TOUR, STILL THE PASSENGERS MAY INTERCHANGE THEIR SEATS WITH THEIR CO-PASSENGERS ON MUTUAL CONSENT. ONCE REACHING DESTINATION, ALL THE ROAD TRAVEL WILL BY NON AC VEHICLES, AS PER GROUP SIZE. DUE TO UNAVOIDABLE CIRCUMSTANCES, IF THERE IS ANY ROAD BLOCK, OR TRAFFIC JAM, YOU WILL HAVE TO CO-OPERATE WITH THE TOUR MANAGER. IN CASE OF ACCIDENT, PLEASE FOLLOW THE INSTRUCTIONS OF THE TOUR MANAGER TO REACH THE NEXT DESTINATION, IN SUCH CASES WE ARE NOT RESPONSIBLE FOR THE DAMAGE TO YOUR LUGGAGE OR ANY INJURY TO THE PASSENGER.

## **HOTELS:**

THOUGH WE HAVE MADE BLOCKING OF ROOMS IN ALL THE ABOVE HOTELS IN ADVANCE AS PER OUR TOUR DATES, BUT DUE TO SOME UNAVOIDABLE CIRCUMSTANCES, IF WE FORCED TO CHANGE THE HOTELS, WE HAVE FULL RIGHTS TO CHANGE WITHOUT PRIOR NOTICE TO THE GUEST. IF WE HAVE TO PROVIDE ALTERNATIVE/SIMILAR ACCOMMODATION, FOR WHICH NO REFUND SHALL BE ALLOWED. THE ROOMS SHALL BE ALLOTTED AS PER THE CHECK-IN TIME OF THE HOTELS AND THEY SHALL HAVE TO BE VACATED AS PER THE HOTELS CHECK-OUT TIME. IN SOME HOTELS THE ROOMS MAY BE TWIN BEDDED. NON AC ROOMS WILL BE PROVIDED IN HILL STATIONS.

## **LUGGAGE:**

DURING THE ENTIRE TOUR OUR STAFF WILL BE AT YOUR SERVICE TO CARRY YOUR LUGGAGE, BUT AT THE SAME TIME WE ARE NOT RESPONSIBLE FOR THE THEFT OR DAMAGE TO YOUR LUGGAGE. NO CLAIMS TO BE ENTERTAINED.

## **TOUR MANAGER:**

WE ADVISE YOU TO CO-OPERATE WITH OUR TOUR MANAGER IN ALL RESPECT TO MAKE YOUR TOUR REALLY ENJOYABLE. ALLOTMENT OF ROOMS, SELECTION OF THE DAILY FOOD MENU, IS THE DUTY OF THE TOUR MANAGER AND PASSENGERS SHOULD NOT INTERFERE IN THESE MATTERS. PASSENGERS INDULGING IN UNWANTED HINDRANCE, IN THE SMOOTH OPERATION OF THE TOUR, OR QUARRELLING WITH THE MANAGER OR OTHER PASSENGERS, SHALL BE ASKED TO LEAVE THE TOUR AT THAT SPOT IMMEDIATELY AND SHALL NOT BE GIVEN ANY REFUND FOR THE SAME.

# Terms & Conditions

## **UNAVOIDABLE CIRCUMSTANCES:**

IF DUE TO REASONS BEYOND OUR CONTROL LIKE RIOTS, FLOODS, POLITICAL UNREST, BAND'S, ACCIDENTS, TRAFFIC JAM OR ANY OTHER NATURAL OR MANMADE CALAMITIES, THE PROGRAM OF THE TOUR HAS TO BE CHANGED OR EXTENDED, THE ADDITIONAL EXPENDITURE FOR THE SAME WILL HAVE TO BE BORNE BY THE PASSENGERS. IF ANY PASSENGERS HAS TO LEAVE THE TOUR MID-WAY, DUE TO ANY REASONS LIKE DEATH OF RELATIVE / ILLNESS / ANY OTHER REASONS, THERE SHALL BE NO REFUND FOR THE REMAINING PORTION OF THE TOUR. AND THE EXPENSES FOR RETURNING BACK TO YOUR DESTINATION ALSO SHALL BE BORNE BY THE PASSENGERS. .

## **SUGGESTIONS / COMPLAINTS DURING THE TOUR:**

IF THE PASSENGERS HAVE ANY SUGGESTIONS/COMPLAINTS REGARDING OUR SERVICES LIKE HOTEL, BUS, FOOD ETC. ARE ADVISED TO INFORM TO YOUR SECTOR IN-CHARGE AND THEN OUR OFFICE IMMEDIATELY BY WATSAPP TO YOUR SALES EXECUTIVE AND CO-OPERATE WITH THE TOUR MANAGER, SO THAT THE SAME CAN BE READDRESSSED AS EARLY AS POSSIBLE. NO COMPLAINTS OR REFUND FOR THE SAME BE ENTERTAINED AFTER COMPLETION OF THE TOUR.

## **BOOKING & CANCELLATIONS:**

YOU CAN CONFIRM YOUR BOOKING BY PAYING A DEPOSIT OF 25% OF THE TOTAL TOUR COST OR ₹10,000 PER PERSON, WHICHEVER IS HIGHER.

THE BALANCE PAYMENT SHALL BE PAID 21 DAYS BEFORE TOUR DEPARTURE DATE. IF ANYBODY FAILS TO PAY THE BALANCE AMOUNT BEFORE 21 DAYS, THEN YOUR ROOMS WILL BE AUTO RELEASED AND NO REFUND WILL BE PROVIDED. IF WE ARE FORCED TO CANCEL THE TOUR DUE TO THE UNAVOIDABLE CIRCUMSTANCES LIKE NATURAL CALAMITIES - FLOODS, RIOTS, BANDS, STRIKES OR ANY POLITICAL REASONS ETC. THEN WE SHALL GIVE YOU AN OPTION OF DATE CHANGE OR CREDIT NOTE AFTER DEDUCTING 10% OF THE TOTAL TOUR COST AS OUR SERVICE CHARGE FOR MAKING THE NECESSARY ARRANGEMENTS FOR YOUR TOUR.

### **CANCELLATION POLICY:**

**BEFORE 21 DAYS OF TOUR DEPARTURE RS.10,000/- PER PERSON**

**BETWEEN 10 TO 21 DAYS 50% OF THE TOUR COST.**

**BETWEEN 05 TO 10 DAYS 75% OF THE TOUR COST.**

**WITHIN 05 DAYS 100% OF THE TOUR COST (NO REFUND).**

**WE HOPE THAT YOU HAVE READ ALL OUR ABOVE TERMS AND CONDITIONS BEFORE CONFIRMING YOUR TOUR WITH US.**



# INDIA'S PIONEER IN PURE VEG & JAIN FOOD TOURS SINCE 38 YEARS

Assam / Meghalaya



Auli / Chopta



Bhutan



Chardham



Himachal



Kashmir



Kerala



Leh Ladakh



Nepal



Rajasthan



Sikkim



South India [Ooty/Coorg]



Spiti



Uttar Pradesh



Uttarakhand



Andaman



Landline:  
+022 6159 6900



More info:  
[www.heenatours.in](http://www.heenatours.in)

મોટાભાઈ, અમારી પાસે ૩૮ વર્ષનો અનુભવ છે!



SCAN HERE  
FOR ALL OUR  
ITINERARIES

Stay Connected: Click me!