

## Data Migration from QnE Delphi (firebird) to QnE Optimum

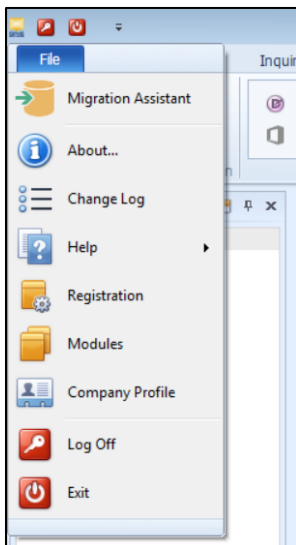
This documentation will guide you how to migrate all the master file and debtor & creditor opening balance from QnE Delphi (Firebird) to QnE Optimum.

We are advisable to start the new financial year in QnE Optimum (e.g. 01/01/2015 to 31/12/2015).

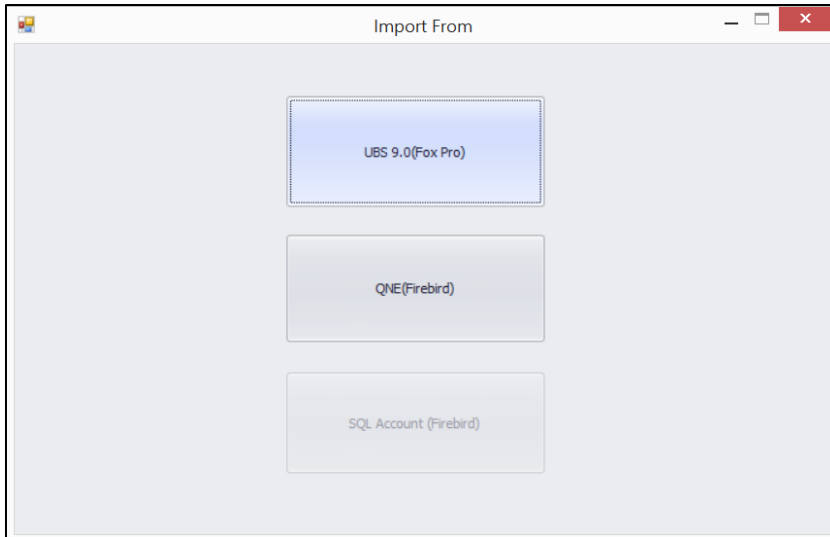
1. Please ensure you are using the latest version of QnE Optimum, otherwise please perform online update to get the latest version.



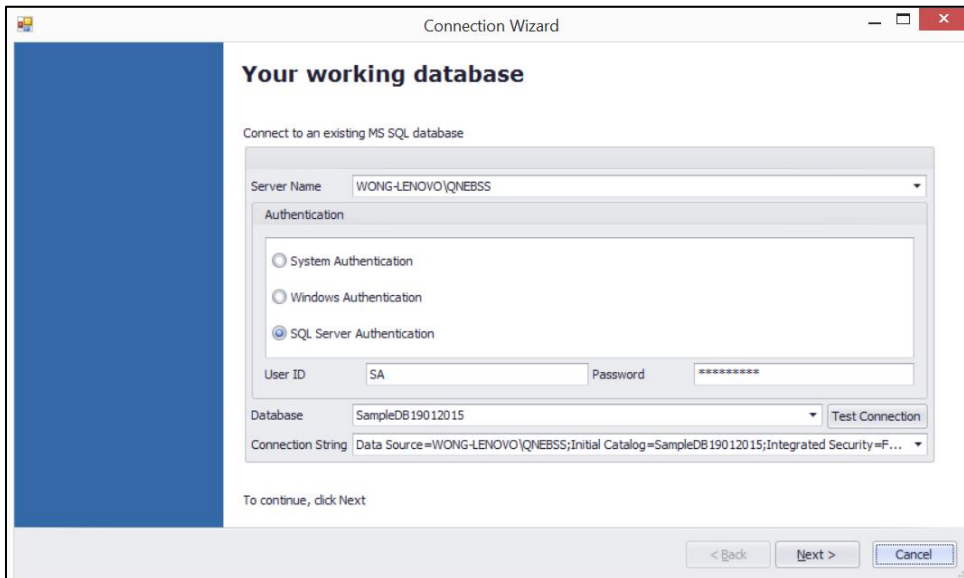
2. Please login to the Optimum database.
3. Go to File -> Migration Assistant



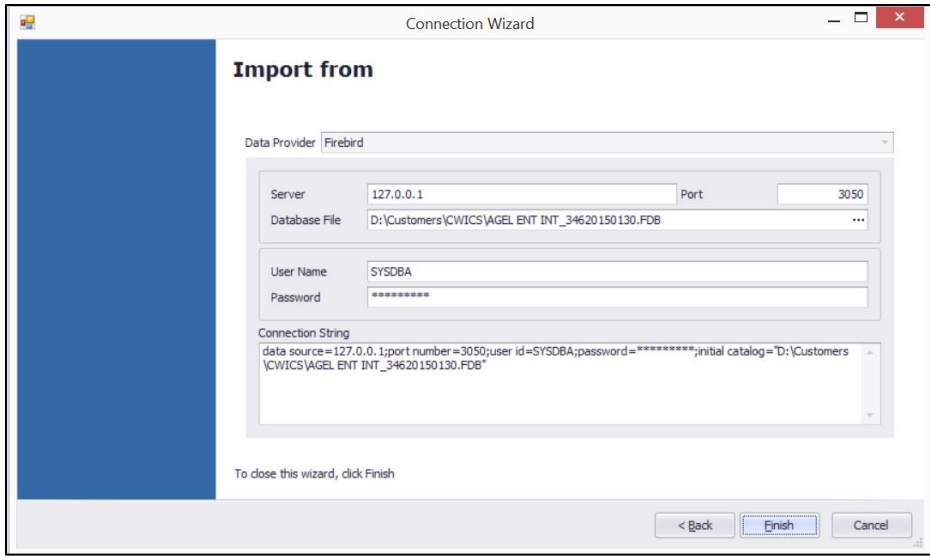
4. From the Import From screen, please select QnE (Firebird)



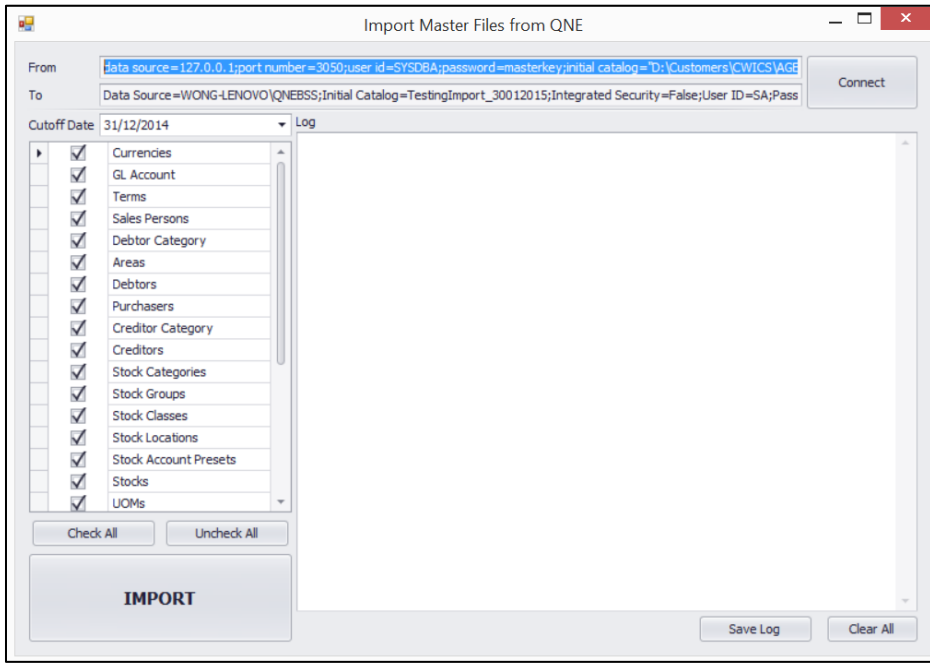
5. Confirm the Optimum database to import. Then press Next



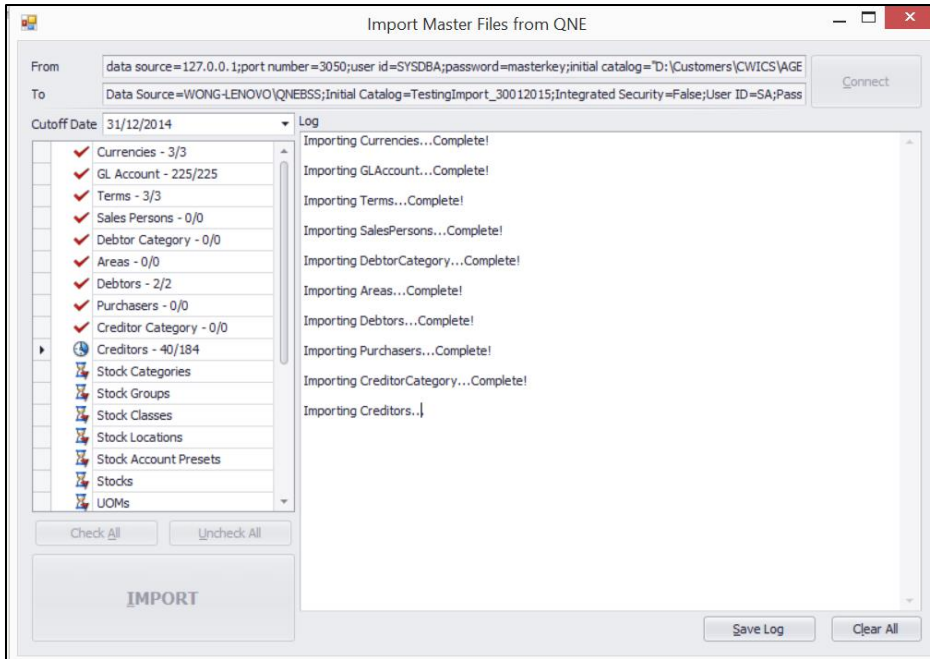
6. Select QnE Delphi (Firebird) database,, then press Finish



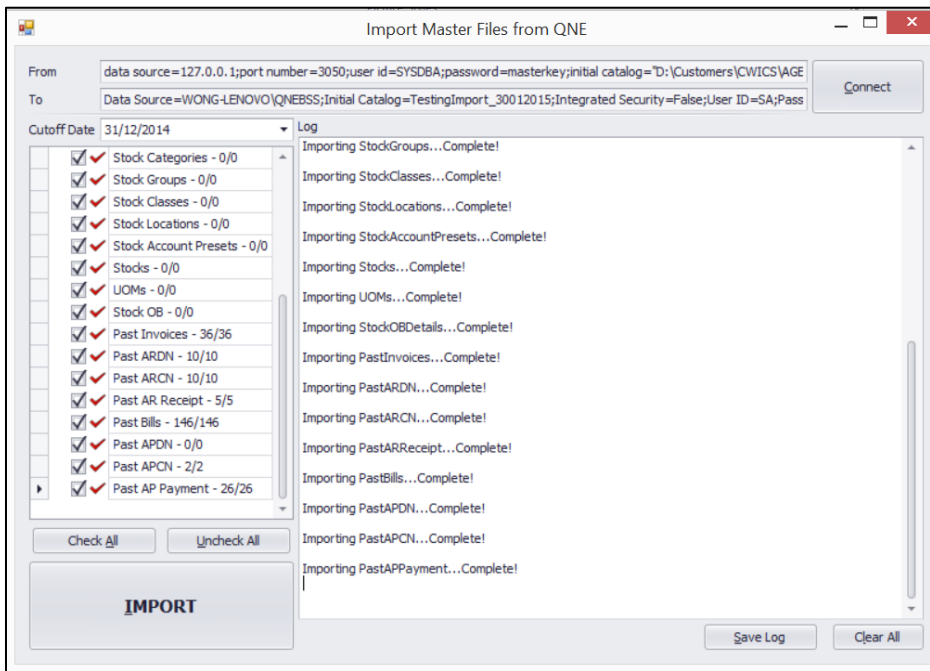
7. You may check or uncheck which item to import, after that press Import



8. Import in progress



9. Import Completed



10. Now you can verify all the master file, debtor aging, creditor aging and stock opening.

11. You also can play the video from the Youtube

<http://youtu.be/YEqRsO5VRzo>