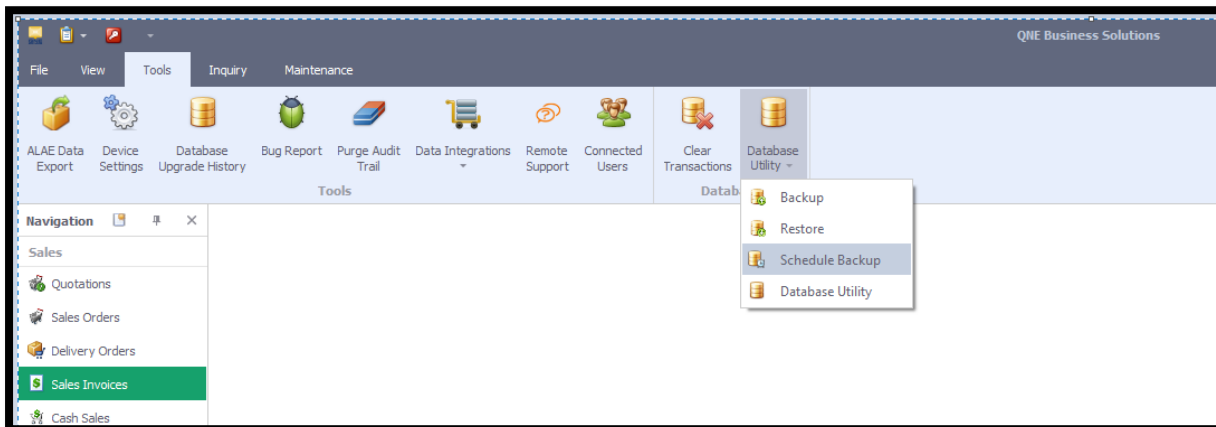
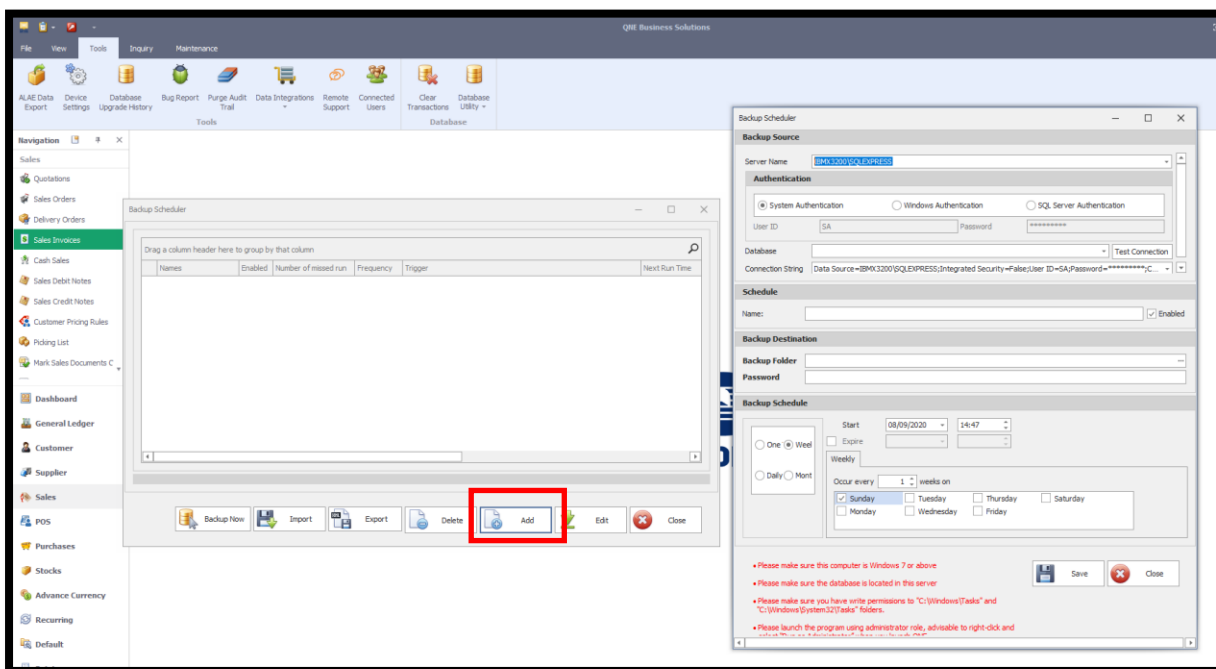


# HOW TO SET SCEHDULE BACK UP?

Step 1: Tools → Database Utility → Schedule Back up



Step 2: Click Add



Step 3:

## Backup Source

Server Name: Update server name as QNE installed as server

Authentication: Select as System Authentication

Database: Select database you would like to perform schedule back up

## Backup Destination

Backup Folder: Select the folder you would like to store the backup file

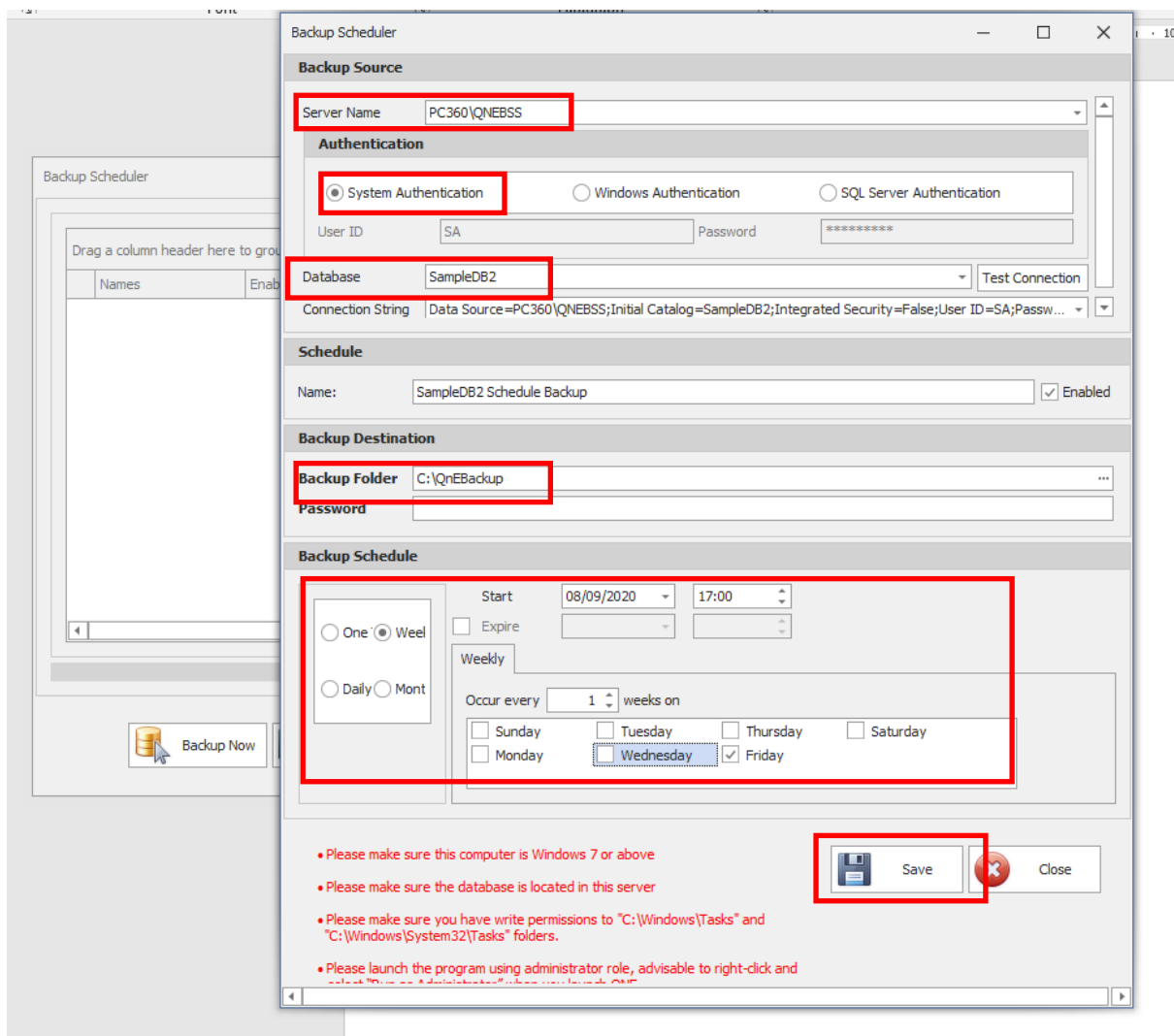
Password: You can leave it empty

## Backup Schedule

Few options you can backup: Weekly / Daily / Monthly

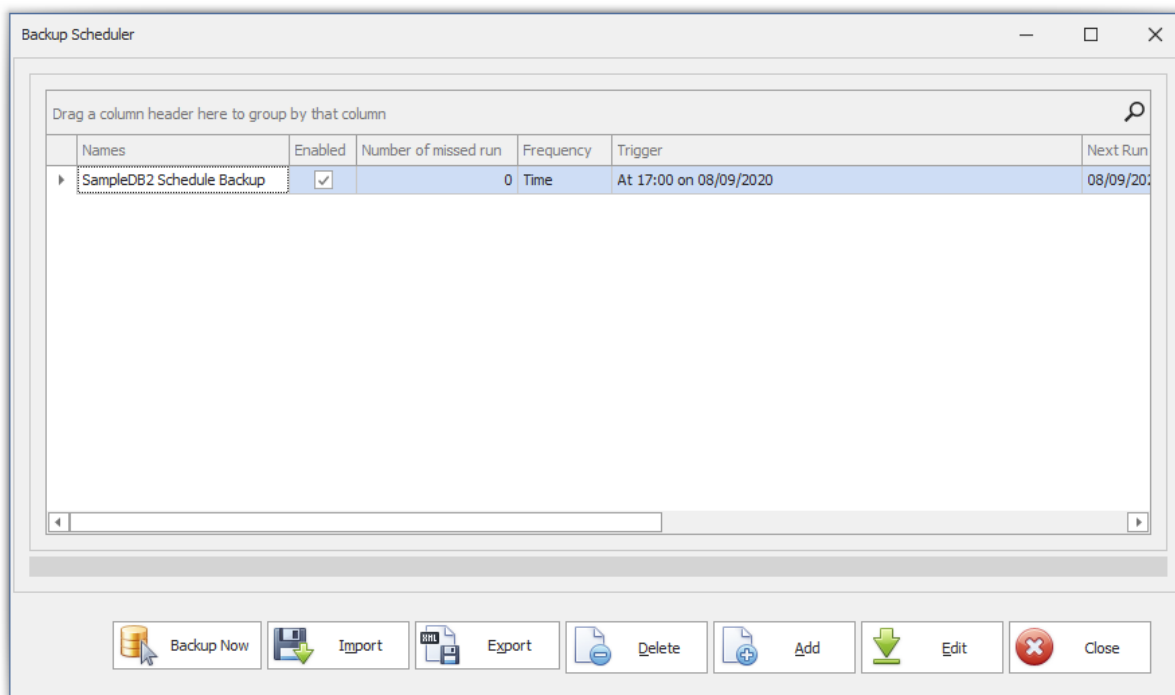
Sample below backup as once a week, select option as "Weekly" and tick the day you want to proceed backup and set time

After this, save it



## HOW TO SET SCEHDULE BACK UP?

The saved backup will appear in the list at Backup Scheduler main screen.



System will auto backup and execute at QBEBACKUP folder

