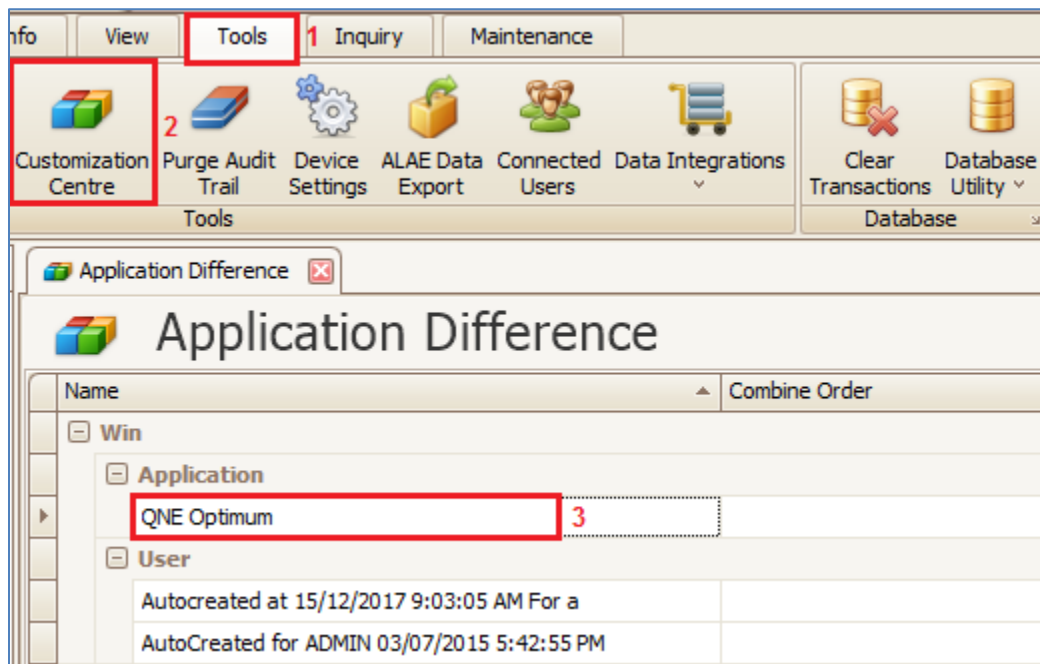


Create User Defined Field with pre-define value

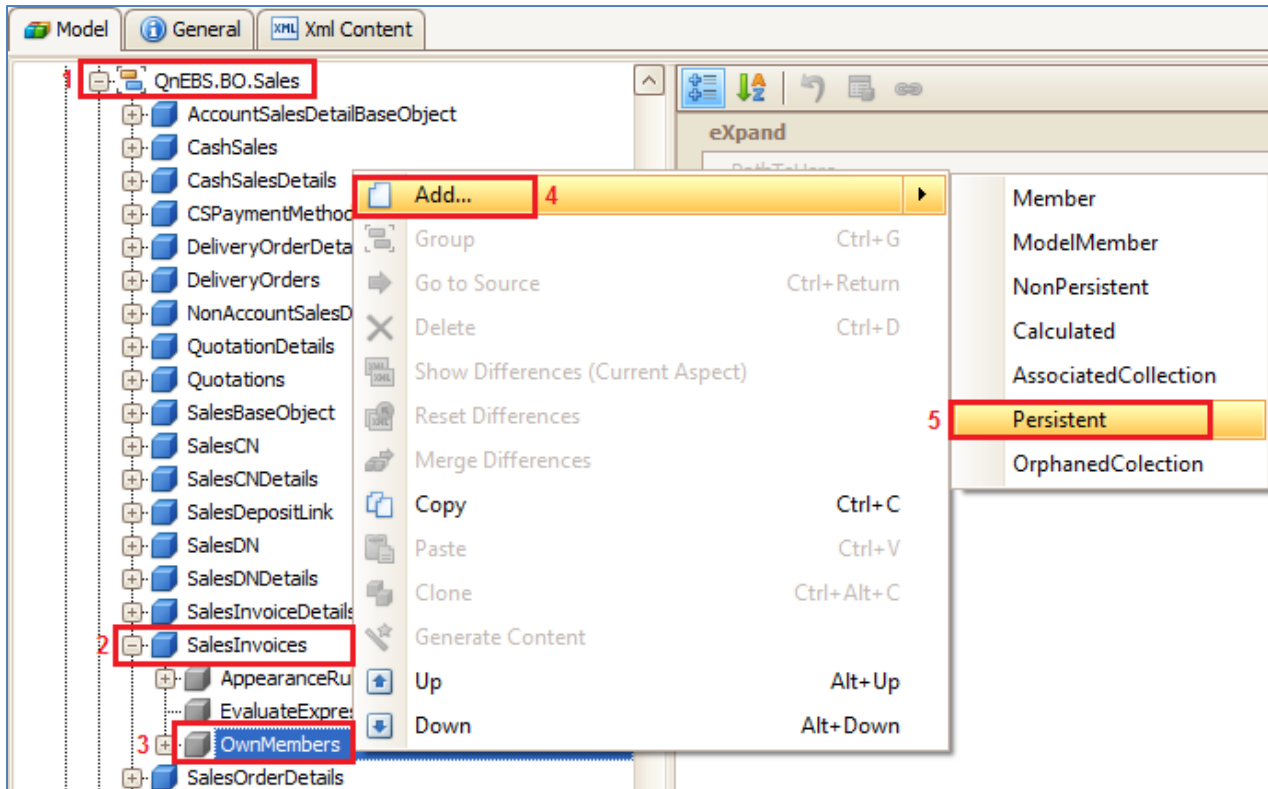
Example

User want to create a Dropdown list/ Combo Box / Selection column pre-define with 'Type of Delivery' in Sales Invoice.

1. Go to Tools > Customization Centre
2. Double click on 'QNE Optimum'



3. Expand BOModel > expand QNEBS.BO.Sales > expand SalesInvoices
4. Right click on 'OwnMembers' > select 'Add...' > Select 'Persistent'



5. Key in as below

- Type = System.String
- Caption = Delivery Type (Optional name to be shown)
- Id = DeliveryType (Optional id in system without space)

eXpand.RuntimeMembers	
* Type	System.String
eXpand.Search	
CellFilter	False
SearchMemberMode	Unknown
Format	
DisplayFormat	
EditMask	
Layout	
Size	-1
Misc	
Caption	Delivery Type
Id	DeliveryType

6. Save and re-login QNE Optimum

7. Go back to newly created field

8. Set PropertyEditorType =

Xpand.ExpressApp.Win.PropertyEditors.StringPropertyEditors.StringLookupPropertyEditor

Appearance	
* PropertyEditorType	Xpand.ExpressApp.Win.PropertyEditors.StringPropertyEditors.StringLookupPr...
Behavior	
AllowAdd	Xpand.ExpressApp.Win.PropertyEditors.CSCodePropertyEditor
AllowEdit	Xpand.ExpressApp.Win.PropertyEditors.FolderBrowseEditor
ImmediatePostData	Xpand.ExpressApp.Win.PropertyEditors.HyperLinkPropertyEditor
IsPassword	Xpand.ExpressApp.Win.PropertyEditors.ReleasedSequencePropertyEditor
	Xpand.ExpressApp.Win.PropertyEditors.StringPropertyEditors.LabelControlPropertyEditor
	Xpand.ExpressApp.Win.PropertyEditors.StringPropertyEditors.MemoPropertyEditor
	Xpand.ExpressApp.Win.PropertyEditors.StringPropertyEditors.StringLookupPropertyEditor



9. Scroll down to Data category, you will notice there are additional setting of 'PredefinedValues'
10. Key in your selection and end with a semi-colon (;)

Data	
DataSourceCriteria	
DataSourceCriteriaProperty	
DataSourceProperty	
DataSourcePropertyIsNullCriteria	
DataSourcePropertyIsNullMode	SelectNothing
LookupProperty	
Name	DeliveryType
PredefinedValues	CityLink;SkyNet;DHL;PosLaju;GDex;FedEx;TNT;
Type	System.String

11. Save and re-login QNE Optimum
12. Go to Sales > Sales Invoice and drag out newly created Field from Customize layout
13. Click on the selection button will be able to view pre-define selection instead of manually key in.

The screenshot shows the 'Sales Invoices' form with various fields for customer, currency, rate, and date. The 'Delivery Type' dropdown is expanded, displaying a list of predefined delivery options: CityLink, SkyNet, DHL, PosLaju, GDex, FedEx, and TNT. The 'Tax Inclusive' checkbox is located below the dropdown list.