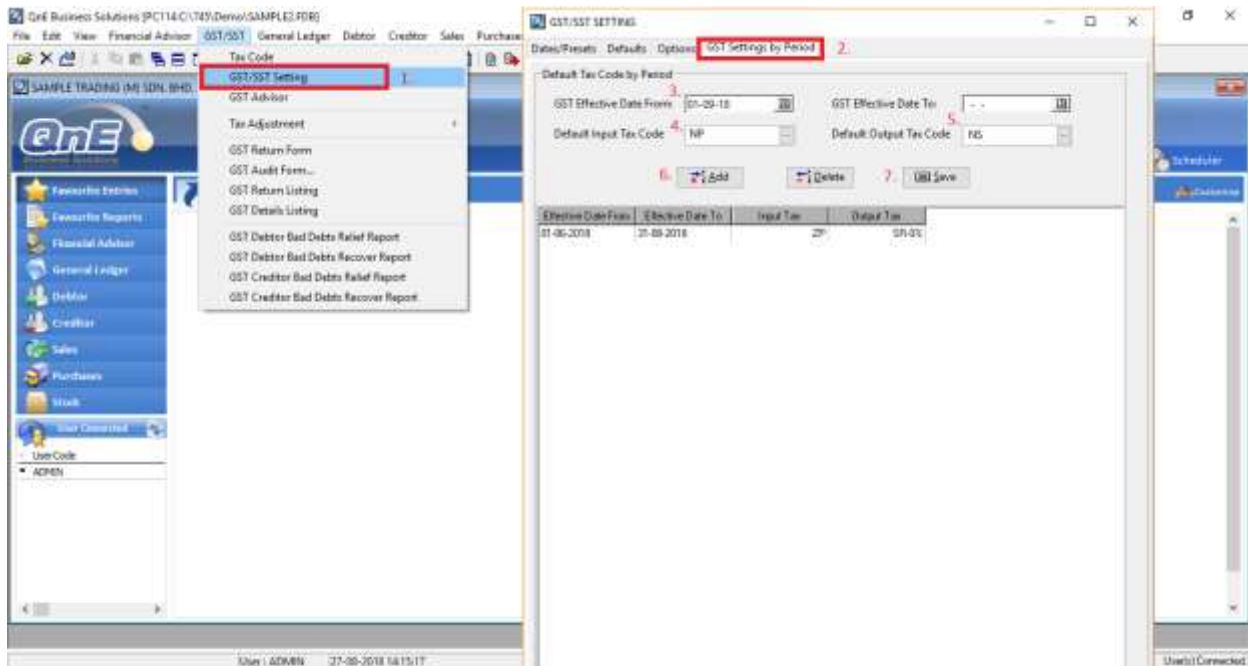


## How to deactivate GST function in QNE -Dephi

Scenario: For user who is not applicable to SST, below 2 methods can be applied

### Method 1: For those users using version 742 or above

1. Go To GST/SST – GST/SST Setting
2. Click on the GST Setting by Period tab
3. Set the Date From: 01/09/2018
4. Select NP for Input Tax
5. Select NS for Output Tax
6. Click the Add button
7. Click the Save button



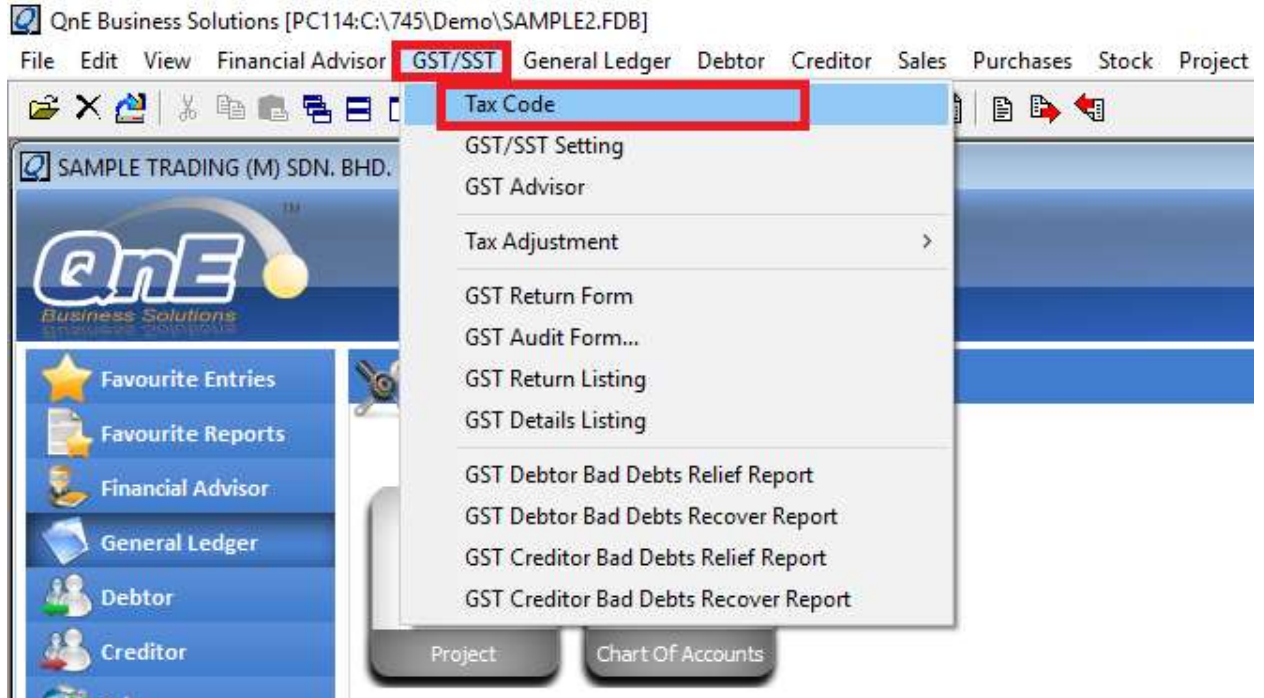


# QNE SOFTWARE SDN. BHD. (611852-V)

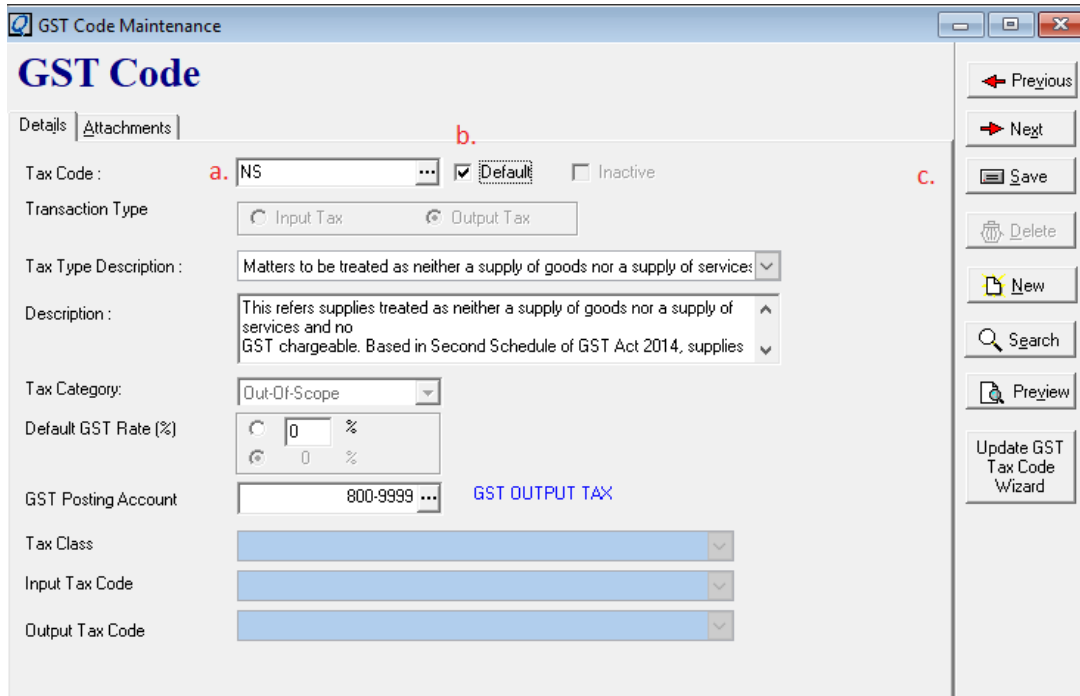
Suite 25-3, Plaza Cheong Hin, Jalan SP 2/1,  
Taman Serdang Perdana,  
43300 Seri Kembangan, Selangor.  
Tel: +603 8943 3080 Fax: +6038943 1080 Email: admin @qne.com.my

## Method 2: For those users using version 741 or below

- 1) Go to GST/SST – Tax Code



- 2) a. Select NS tax code  
b. Tick Default checkbox  
c. Click the Save button





# QNE SOFTWARE SDN. BHD. (611852-V)

Suite 25-3, Plaza Cheong Hin, Jalan SP 2/1,  
Taman Serdang Perdana,  
43300 Seri Kembangan, Selangor.

Tel: +603 8943 3080 Fax: +6038943 1080 Email: admin @qne.com.my

- 3) a. Select NP tax code
- b. Tick Default checkbox
- c. Click the Save button

**GST Code Maintenance**

## GST Code

Details | Attachments

Tax Code : a. NP  Default  Inactive c.

Transaction Type :  Input Tax  Output Tax

Tax Type Description : Matters to be treated as neither a purchase of goods nor a purchase of services

Description : This tax code is applicable for matters to be treated as neither a purchase of goods nor a purchase of services, and no GST incurred. For example, the users can...

Tax Category: Out of scope

Default GST Rate (%):  %

GST Posting Account : 700-9999 ... GST INPUT TAX

Tax Class :

Input Tax Code :

Output Tax Code :

Navigation: Previous, Next, Save, Delete, New, Search, Preview, Update GST Tax Code Wizard