

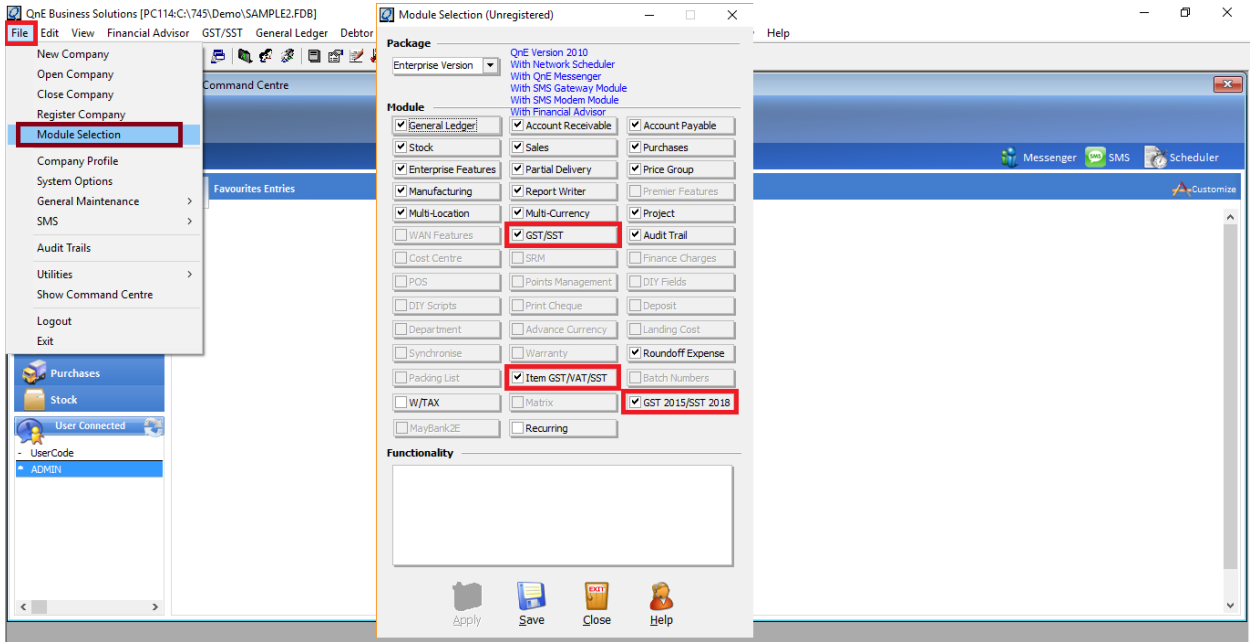


QNE SOFTWARE SDN. BHD. (611852-V)

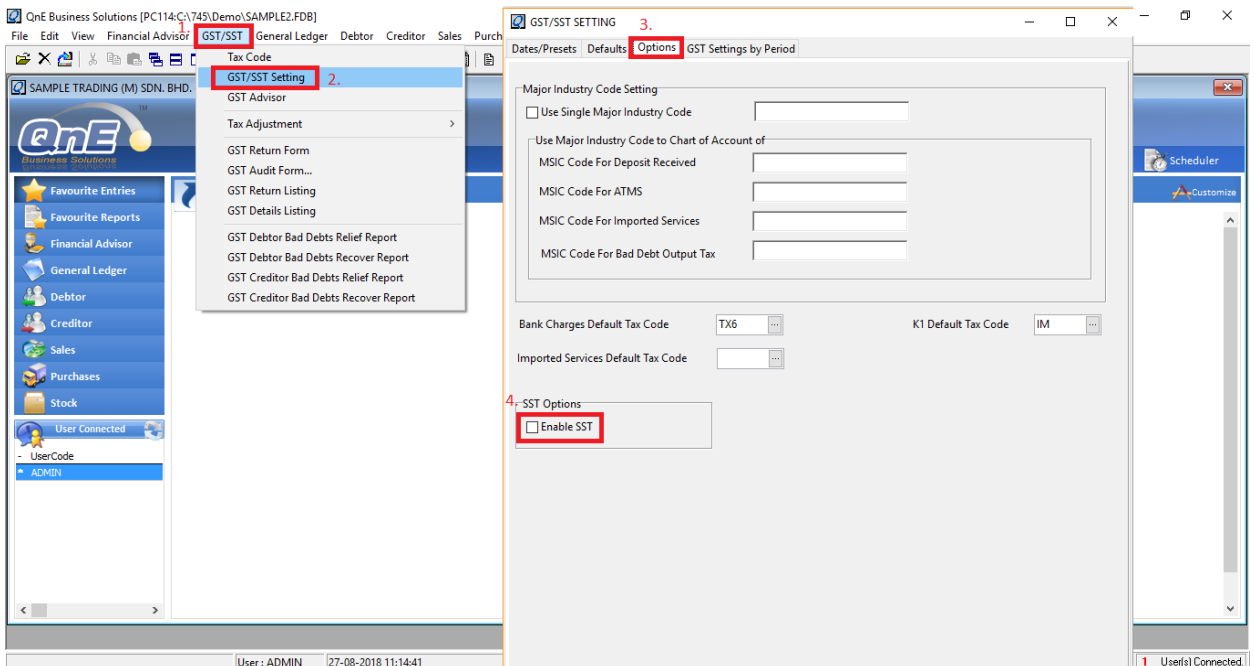
Suite 25-3, Plaza Cheong Hin, Jalan SP 2/1,
Taman Serdang Perdana,
43300 Seri Kembangan, Selangor.
Tel: +603 8943 3080 Fax: +6038943 1080 Email: admin @qne.com.my

QNE Delphi - Sales & Service Tax (SST)

1. Ensure that the module in File – Module Selection - GST /SST, Item GST/VAT/SST and GST 2015/SST 2018 is already enabled.



2. 1. Go to GST/SST
2. GST / SST Setting.
3. Go to Option Tab
4. Tick Enable SST





QNE SOFTWARE SDN. BHD. (611852-V)

Suite 25-3, Plaza Cheong Hin, Jalan SP 2/1,
Taman Serdang Perdana,
43300 Seri Kembangan, Selangor.

Tel: +603 8943 3080 Fax: +6038943 1080 Email: admin @qne.com.my

5. Go to Dates / Preset Tab

6. Click Update button.

5. Date Setting

5. Taxable Period Category: 1 Month(s)
GST Effective Date: 01-04-15
GST Next Filing Date: 30-04-15

GST Tax Rate
Default Tax Rate: 6.00
 Default Tax Inclusive

Preset Account Setting

Customer
Bad Debt Written Off: 400-9000
Bad Debt Recovered: 300-2000
GST Bad Debt AR
Bad Debt Relief(AR): 700-0090
Bad Debt Recover(AR): 700-0090

GST Adjustment
GST Payable: 800-9200
GST Claimable: 700-9200
GST Input: 700-9999
GST Output: 800-9999
GST Expenses: 402-0000
GST Control: 700-9000

K1 Imported Goods And Services
Customs Charges Acc: 400-6000

Supplier
GST Bad Debt AP
Unpaid Purchase (AP): 800-0090
Payment for Unpaid Purchase (AP): 800-0090

6. Update

3. A Wizard screen will pop out.

1. Select Sales(If your business is related to Sales) or Select Service (If your business is related to Service)
2. Define the Sales/Purchase Tax Rate or the Service Tax Rate.
3. Click on the OK button

SST

If the SST tax codes are not yet defined, you are required to create it; please define below tax rate:

Sales/Purchase Tax Rate: 0.00
Service Tax Rate: 6.00

Is your business related to sales or services?
 Sales Services

GST - Tax Code Items

Effective from 01 September 2018, the government of Malaysia will reintroduce Sales and Services Tax (SST). As a result, you have an option to set below previously used Tax Codes for GST as Inactive/Active. Please tick the checkbox to set the tax as Active or untick the checkbox to set the tax as Inactive.

TAXCODE	GSTRATE	TAXTYPE	DESCF
AJP	6	Standard-Rated	Any adj
AJS	6	Standard-Rated	Any adj
NR	0	Out of scope	Purchas
DS	6	Standard-Rated	Deemec
EP	0	Exempted	Purchas
ES	0	Exempted	Exempt
ES43	0	Exempted	Incident
ESN43	0	Exempted	Non inci
GP	0	Out of scope	Purchas
GS	0	Out-Of-Scope	Disregar
IM	6	Standard-Rated	GST inc
IM0	0	N/A	GST inc
IS	0	Zero-Rated	Imports
BL	6	Standard-Rated	Purchas
OP	0	Out of scope	Purchas
OS	0	Out-Of-Scope	Out of s
RS	0	Exempted	Relief st
SR	6	Standard-Rated	Standar

3. OK



QNE SOFTWARE SDN. BHD. (611852-V)

Suite 25-3, Plaza Cheong Hin, Jalan SP 2/1,
Taman Serdang Perdana,
43300 Seri Kembangan, Selangor.
Tel: +603 8943 3080 Fax: +6038943 1080 Email: admin @qne.com.my

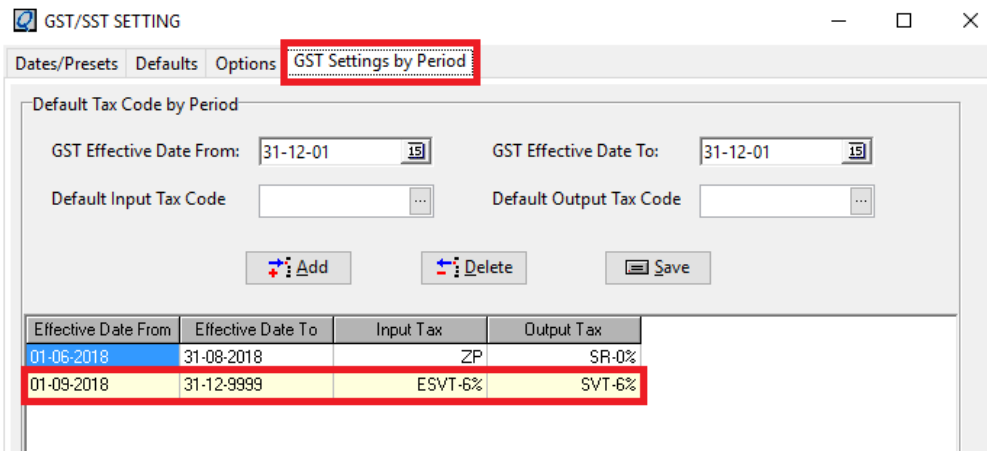
Results

System will :-

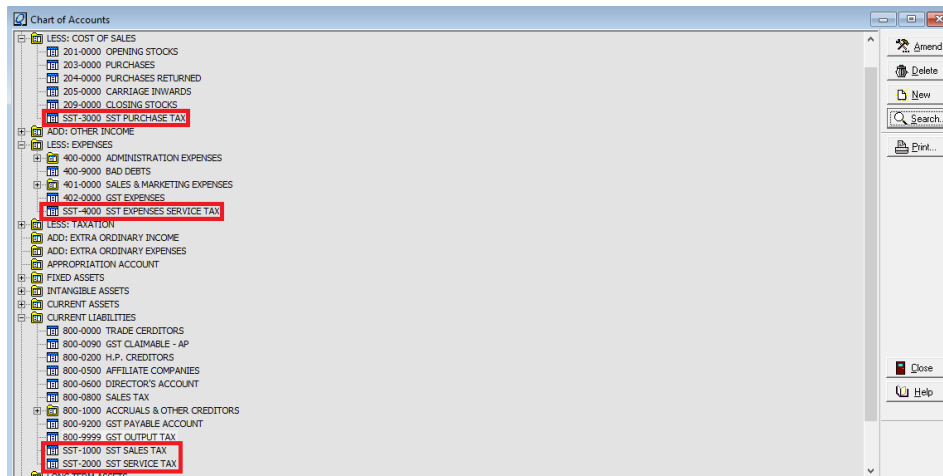
- i. automatically Create a New Period (in GST Settings by Period tab)
Effective Date From : 01/09/2018

If user select Sales in the Tax Code Update Screen previously,
the default Input Tax =PT-[Tax Rate]%, Output Tax = ST-[Tax Rate]%
example : PT-10%; ST-10%

If user select Service in the Tax Code Update Screen previously,
the default Input Tax = ESVT-[Tax Rate]%, Output Tax = SVT-[TaxRate]%
example: ESVT-6%; SVT-6%



- ii. automatically create 4 Account Codes (in General Ledger – Chart of Account)
 - a. Less: Cost of Sales - SST Purchase Tax
 - b. Less : Expenses - SST Expenses Service Tax
 - c. Current Liabilities - SST Sales Tax
 - d. Current Liabilities – SST Service Tax





QNE SOFTWARE SDN. BHD. (611852-V)

Suite 25-3, Plaza Cheong Hin, Jalan SP 2/1,
Taman Serdang Perdana,
43300 Seri Kembangan, Selangor.
Tel: +603 8943 3080 Fax: +6038943 1080 Email: admin @qne.com.my

- iii. automatically create 4 Tax Codes (in GST/SST – Tax Codes)
 - Expenses Service Tax
 - Purchase Tax
 - Sales Tax
 - Service Tax

Search GST Code					
Key Search	Sort / Search Type	Filter Field	Filter Text		
	Tax Code	Description	Containing	SST	
Tax Code	Description	TransactionType	Tax Type	GST Rate	Posting Account
▶ ESVT-6%	Expenses Service Tax (SST)	Input Tax	Standard-Rat	6	
PT-0%	Purchase Tax (SST)	Input Tax	Standard-Rat	0	
ST-0%	Sales Tax (SST)	Output Tax	Standard-Rat	0	
SVT-6%	Service Tax (SST)	Output Tax	Standard-Rat	6	

**** NOTE : Users are required to Assign the Posting Account manually for each Tax Code**

Go to GST – GST Code

Click on the Tax Code and select the corresponding Account and then click Save.

- Expenses Service Tax – (example : ESVT-6%)
Posting Account : SST EXPENSES SERVICE TAX
- Purchase Tax – (example : PT-0%)
Posting Account : SST PURCHASE TAX
- Sales Tax – (example : ST-0%)
Posting Account : SST SALES TAX
- Service Tax – (example : SVT-6%)
Posting Account : SST SERVICE TAX

GST Code Maintenance

GST Code

Details | Attachments

Tax Code : Default Inactive

Transaction Type : Input Tax Output Tax

Tax Type Description :

Description :

Tax Category :

Default GST Rate (%) : % % Post To Same Account

GST Posting Account :

Buttons: Previous, Next, Save, Delete, New, Search, Preview, Update GST Tax Code Wizard