




# UPDATE DEV VERSION

[Version 1]

Hazel

[31/12/2020]



	<b>QNE TIPS</b>	
	Product : QNE Optimum	Version: 1.00
	Doc No : 1	Page No: 2 of 3

**SCENARIO**

How to update DEV version?


From screenshot below, we can see the current version is 2019.0.1.2 (Public version), but now we wanted to update to DEV version in order to get some additional features.



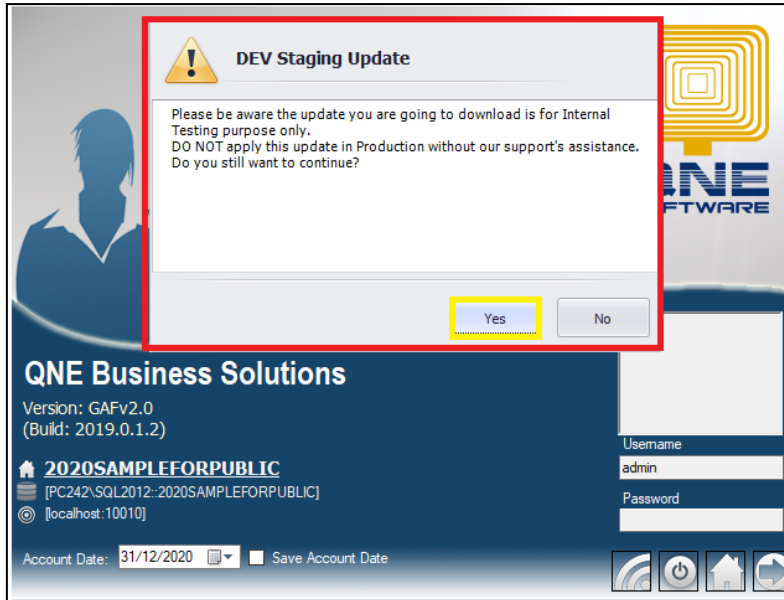
**SOLUTION**

1. On the login wizard, please press “Ctrl + Shift + F12” from your keyboard.

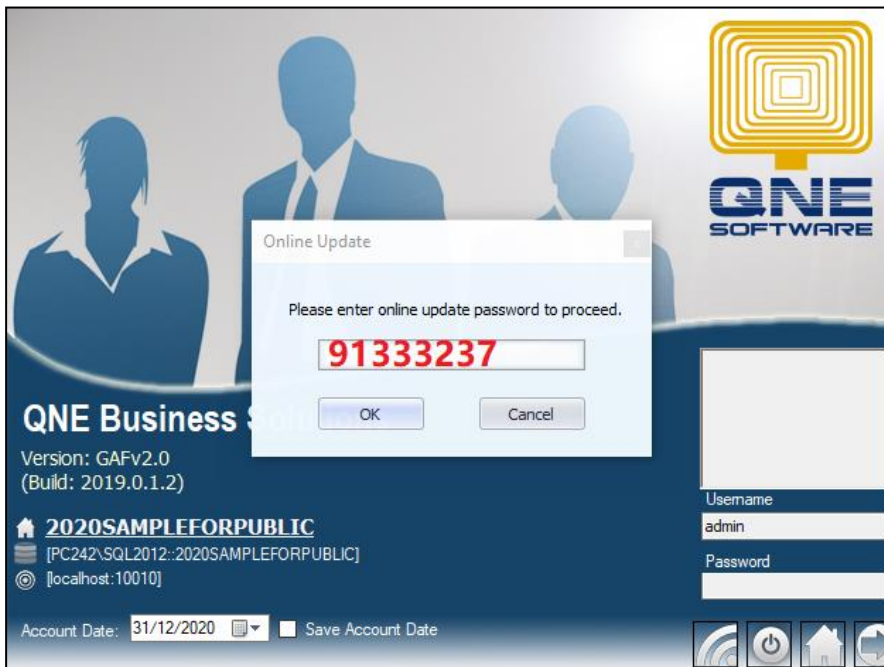



	<b>QNE TIPS</b>	
	Product : QNE Optimum	Version: 1.00
	Doc No : 1	Page No: 3 of 3

2. Then you able to see message as below, please click “Yes”

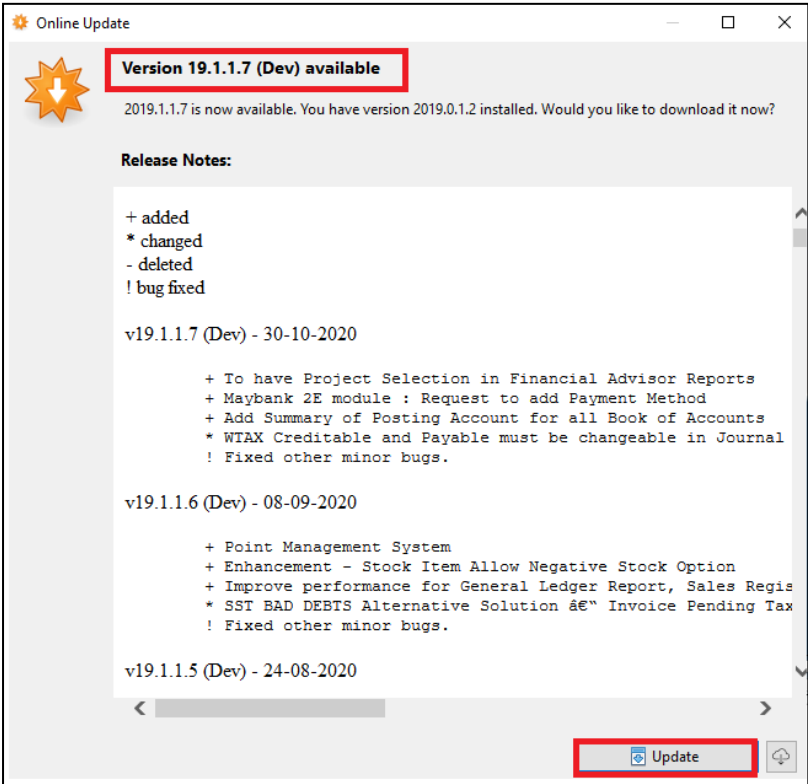


3. Update Password is **91333237**

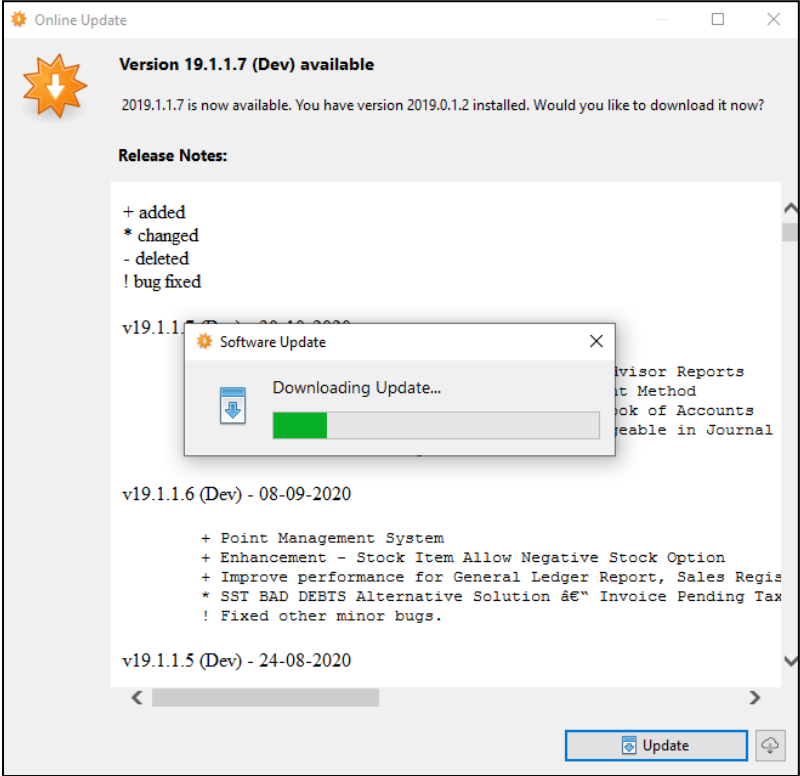



	<b>QNE TIPS</b>	
	Product : QNE Optimum	Version: 1.00
	Doc No : 1	Page No: 4 of 3

4. Then you able to see what is the latest DEV version and release notes. Please click on “Update”

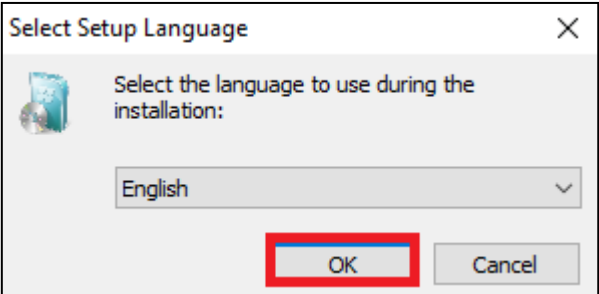


5. Wait for the download process

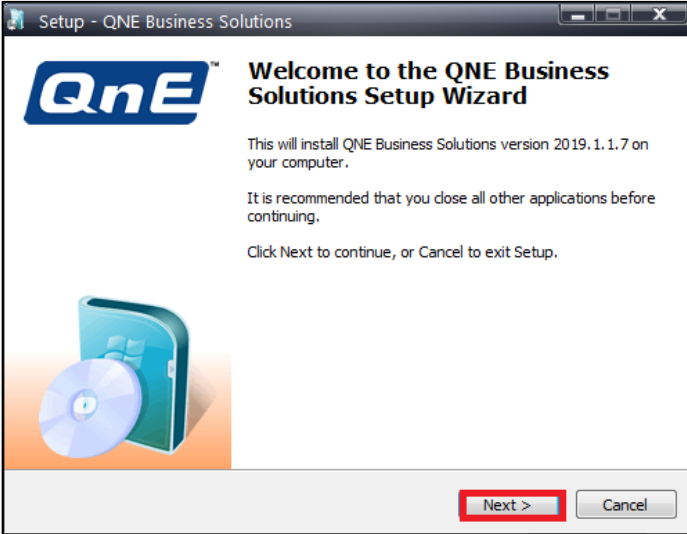


	<b>QNE TIPS</b>	
	Product : QNE Optimum	Version: 1.00
	Doc No : 1	Page No: 5 of 3

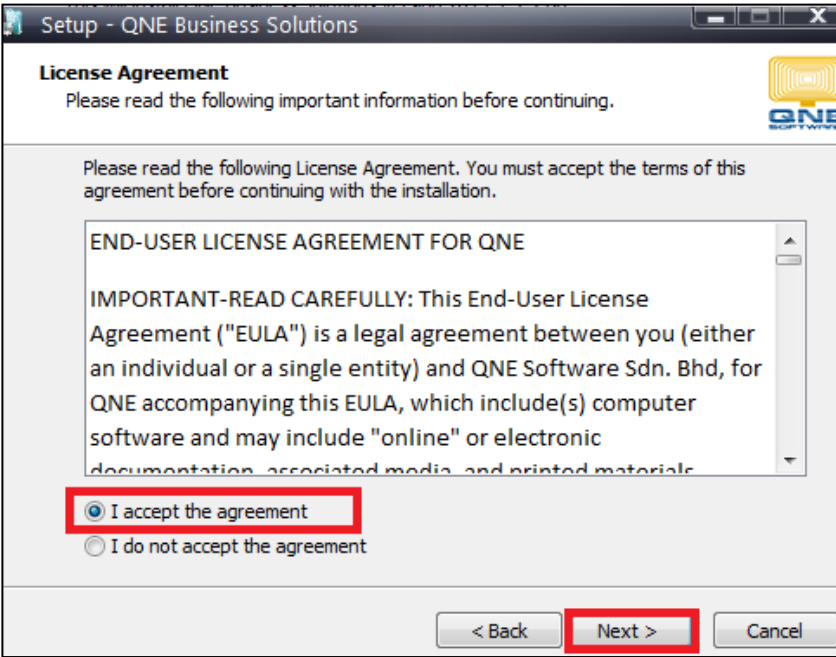
6. Click on "OK"




7. Click on "NEXT"

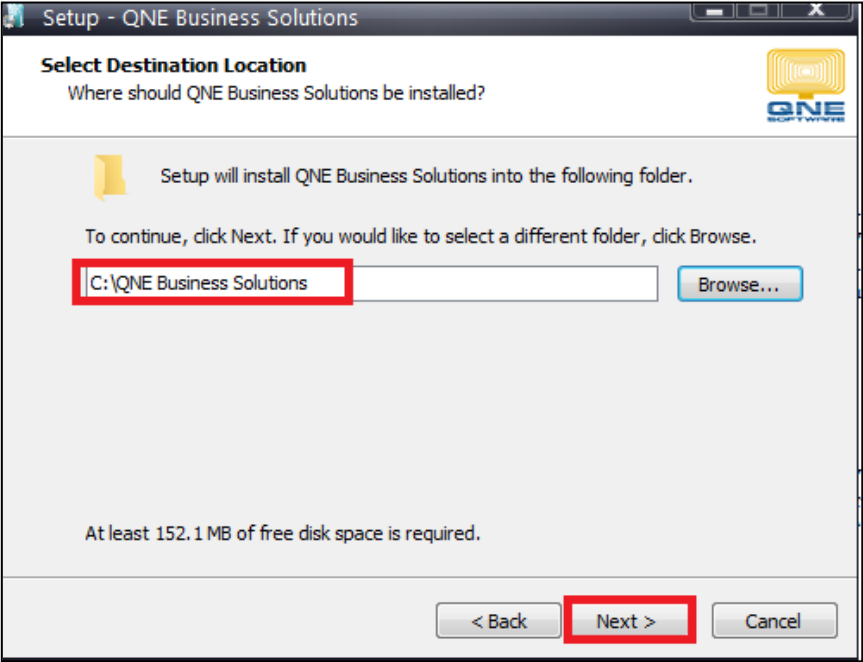


8. Choose "I accept the agreement" and click "NEXT"

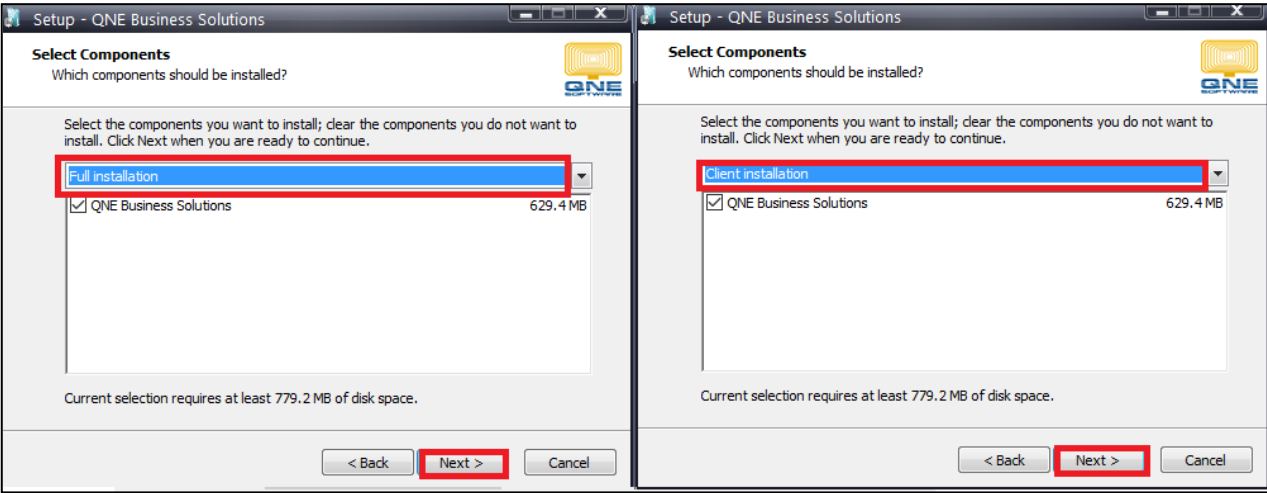



	<b>QNE TIPS</b>	
	Product : QNE Optimum	Version: 1.00
	Doc No : 1	Page No: 6 of 3

9. Default application folder is in C:\QNE Business Solutions > Click "NEXT"

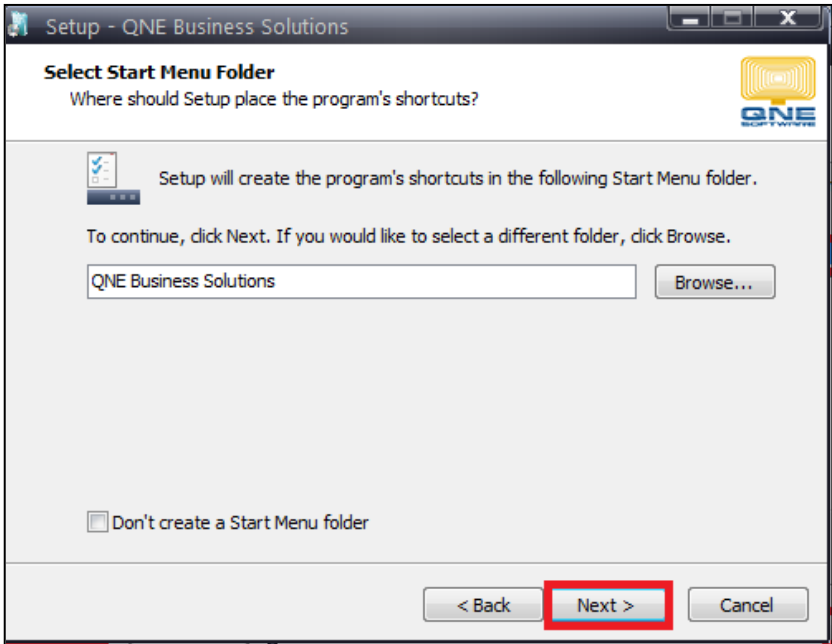


10. Choose "Full Installation" if you're using SERVER PC  
 OR  
 Choose "Client Installation if you're using SUB PC  
 Then please click "NEXT"

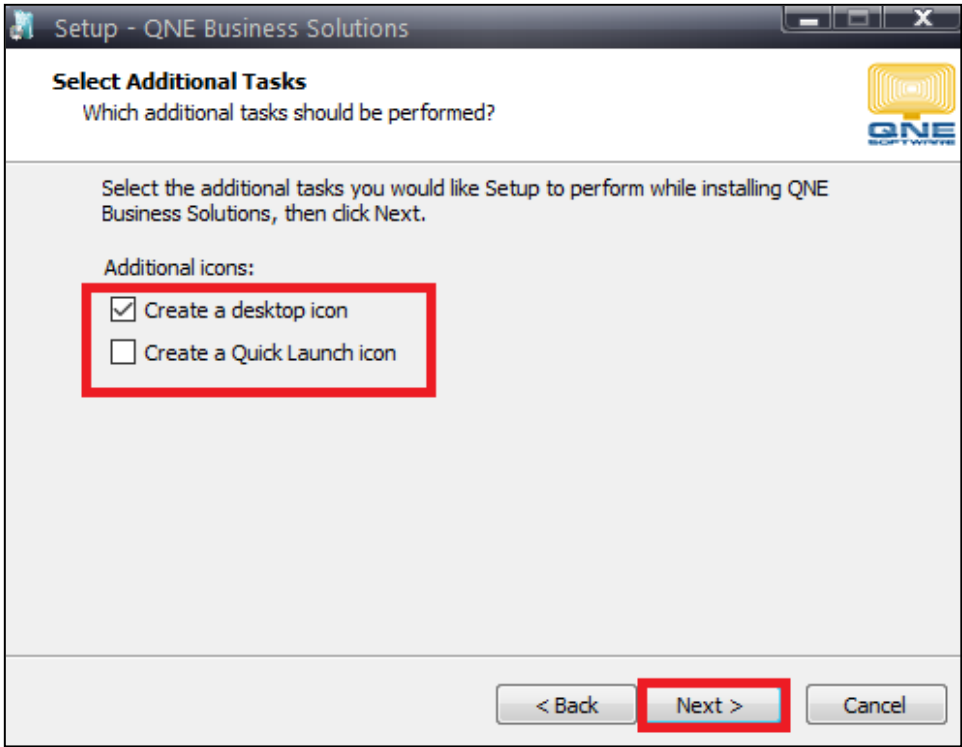


	<b>QNE TIPS</b>	
	Product : QNE Optimum	Version: 1.00
	Doc No : 1	Page No: 7 of 3


11. Then click "NEXT"



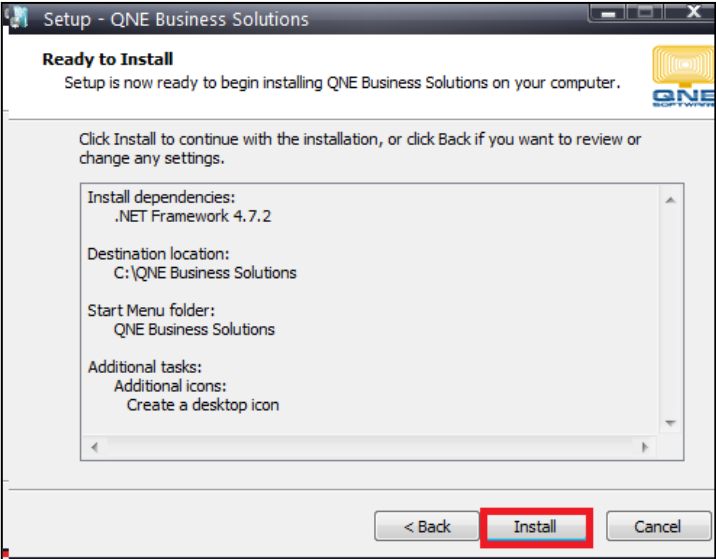
12. Tick on additional icons if you want to create a desktop icon / Quick Launch Icon  
Then click "Next"



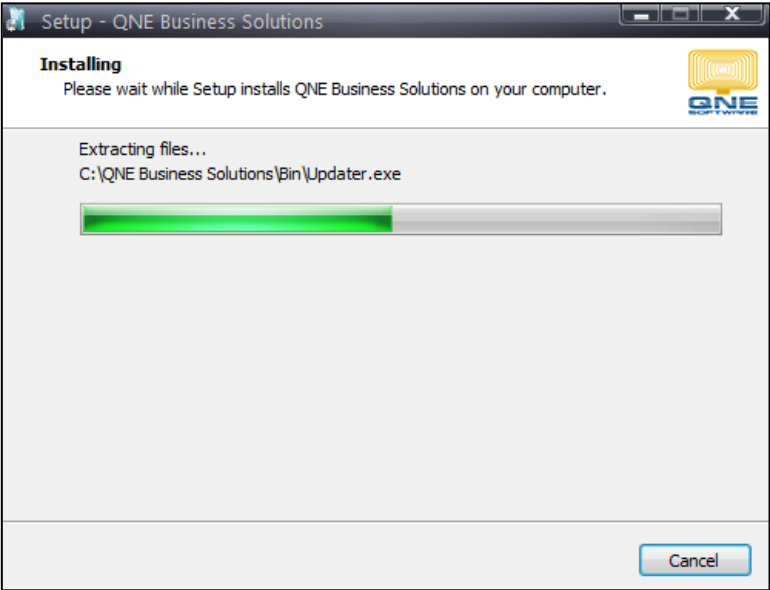


	<b>QNE TIPS</b>	
	Product : QNE Optimum	Version: 1.00
	Doc No : 1	Page No: 8 of 3

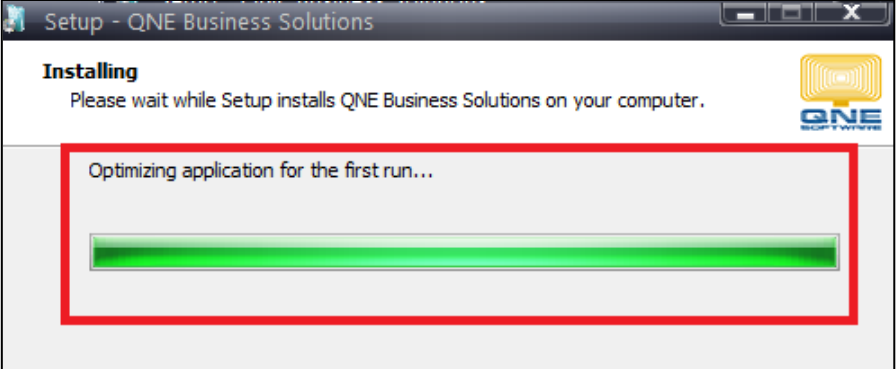
13. Click "Install"



14. Waiting for the file to be extract



15. Please wait for a moment, this might take some times to optimize the first run.





**QNE**  
SOFTWARE

## QNE TIPS

Product : QNE Optimum

Version: 1.00

Doc No : 1

Page No: 9 of 3

16. Click on "FINISH"



DONE 😊