

likely culprit is  
'IMPORT' when  
preview

[Version 1.0]

Jason Lee

[17/08/2021]





## SCENARIO

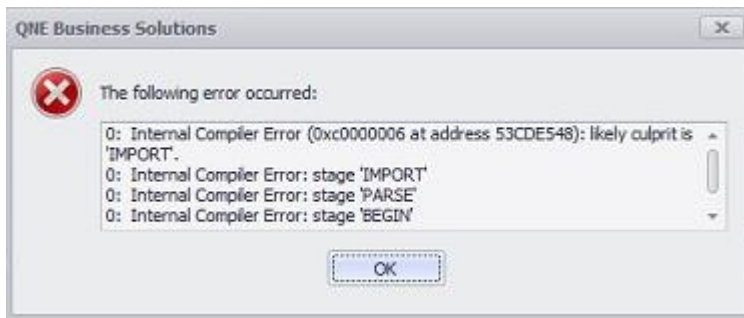
Preview transaction or report prompted

0: Internal Compiler Error (0xc0000006 at address 738D40A1): likely culprit is 'IMPORT'.

0: Internal Compiler Error: stage 'IMPORT'

0: Internal Compiler Error: stage 'PARSE'

0: Internal Compiler Error: stage 'BEGIN'

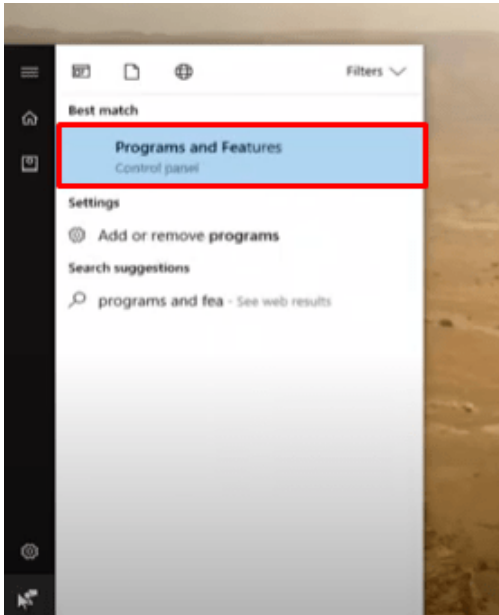


If you encountered error likely culprit is 'IMPORT' then most likely the .Net Framework is not working properly and required to reinstall them.

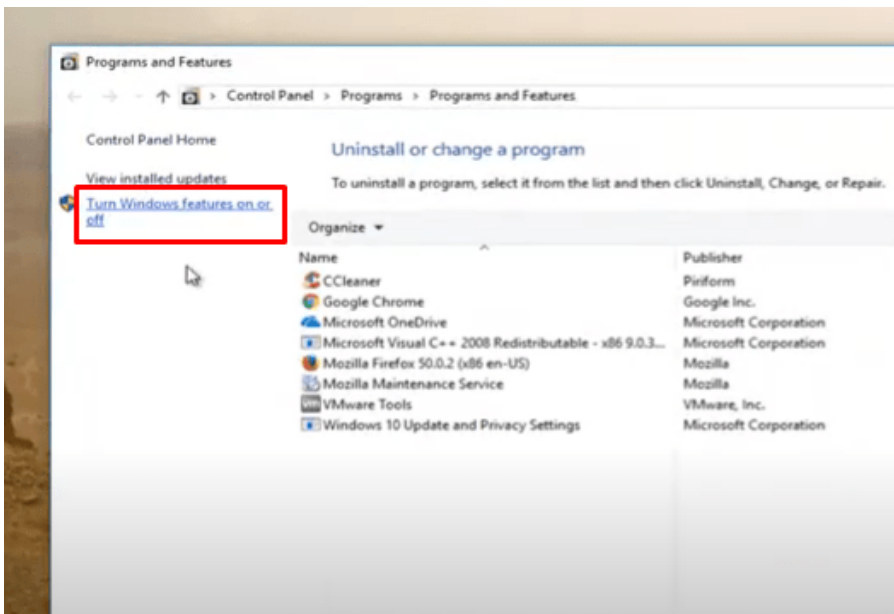


## SOLUTION

1. Close all applications
2. Go to your Windows 10 Start menu > type in programs and features. Click on Programs and features from the search results.

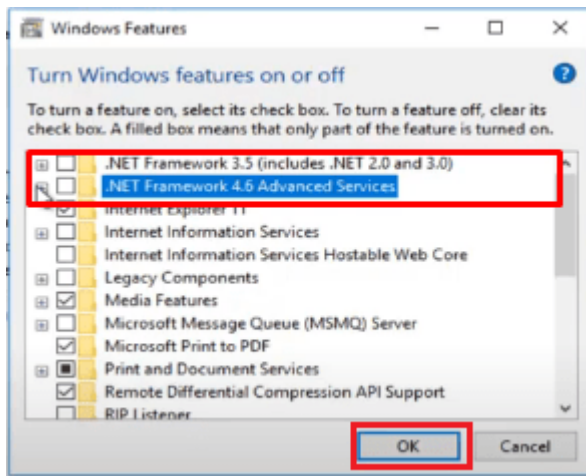


3. This will open up the Programs and features window of the Control Panel. From the left menu bar, choose Turn Windows features on or off.

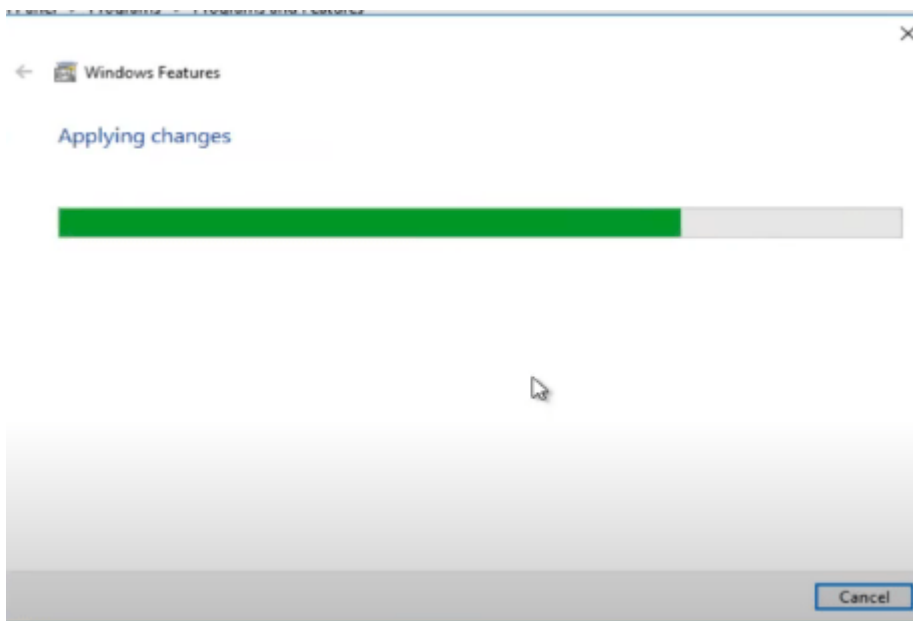





4. The Windows Features window will show up. It may take a while for the list of all features to appear. Wait patiently.
5. After the list of features has loaded, look for the .NET frameworks you have.
6. In this case, there are .NET Framework 3.5 (includes >NET 2.0 and 3.0) and .NET Framework 4.6 Advanced Services.
7. Uncheck the boxes and click OK

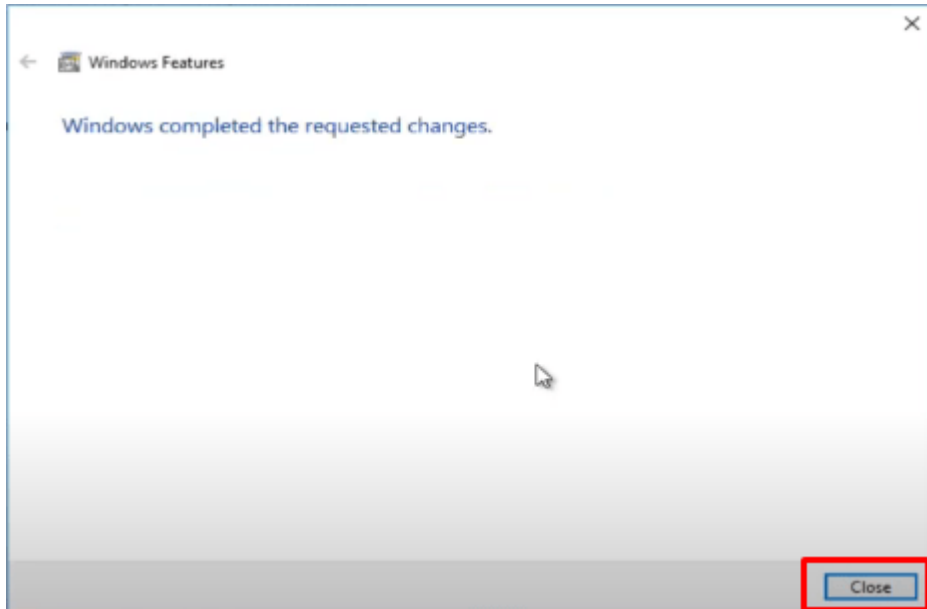


8. The .NET Frameworks will start uninstalling. It will take a moment to uninstall and applying the changes. Be patient through it.



	<b>QNE TIPS</b>	
	Product : QNE Optimum	Version: 1.00
	Doc No : 1	Page No: 5 of 3

- When the uninstallation is done, you will get a confirmation that Windows completed the requested changes. Click close.



- Restart your computer
- Once Windows startup, repeat step 2 to step 4
- Check .NET Framework 3.5 (includes >NET 2.0 and 3.0) and .NET Framework 4.6 Advanced Services.
- Click OK
- Once .Net Framework installation is done, restart your computer
- Now you won't see likely culprit is 'IMPORT' when preview format

\*\* Learn more about [Azure Cloud](#)

\*\* Learn more about [QNE Hybrid Cloud Software](#)

\*\* Learn more about [Design format with Continue Next Page](#)