

Feedback 2018-19

The college aims to offer the best possible environment and learning experience to encourage students to perform to potential for academic achievement. Students, teachers and parents play an important role in the evaluation, development and enhancement of the quality of this learning experience.

Feedback from students, teachers and parents helps the college to evaluate how its service policies and changes as per stakeholders requirements. The Feedback Process has put an emphasis on the need for involvement of students in the quality assurance of higher education. Student involvement requires that students should act as collaborators, rather than merely passive receivers of teaching and learning process.

This college was established with the mission to provide guidance, identifying talent, and enhancing potential, encouraging students to follow their dreams and helping them become successful professionals.

Through Student feedback, the College continues to review, develop and implement policies and practices in key areas-

1. Curriculum, governance, supervision and monitoring;
2. The creation of an academic culture in which all students and staff are expected to deploy higher-order thinking skills;
3. Reinforcing clear expectations concerning unit content, assessments and outcomes;
4. Feedback focused on improving teaching and enhancing lecturers professional knowledge.

Parents have entrusted the future of their children in our hands and thus they play a very important role in the development and enhancement of the quality of this learning experience.

Feedback from parents allows the college to evaluate its service provision and thus cater to providing excellent service towards the students. The feedback analysis process has put an increasing emphasis on the need for involvement of parents in the quality assurance of excellent education. Parent's involvement requires that they play an active role in participating for the holistic development of their children.

Parent's feedback has three main objectives:

1. To provide parents the opportunity to comment on the quality of their ward's learning experience, as required in preparation for and as part of review process.

2. To assess the success of academic provision in relation to the expectations of both the parents and the students.

3. To provide feedback to the faculties in order to improve delivery and/or content of the curriculum.

Every year at the middle session, feedback forms are distributed to the parents of postgraduate students. This circulation, distribution of feedback forms and collection of filled feedback forms was done by the IQAC department. The feedbacks are collected from all stakeholders by the IQAC through feedback committee and analyze them. After analysis of feedback an inclusive reports are prepared and communicated to the concerned teaching staff and head of department for their improvement. Feedback committee suggest improvement in the infrastructure and basic facilities after analyzing the feedback from the students regards the same.

S.No	Feedback Type	Objective	Frequency (in Year)
1	Students Feedback on college	Facilities in the campus	Once
2	Students Feedback	Design and Review of Curriculum	Once
3	Student Feedback on Teacher	Teaching of the Teacher	Once
4	Parents Feedback	Design and Review of Curriculum	Once
5	Teachers Feedback	Design and Review of Curriculum	Once
6	Parent's Feedback	Teaching- Learning and Facilities of College	Once

Report of Analysis of Feedback on Curriculum ,College Facilities and Teacher collected From Different Stakeholders

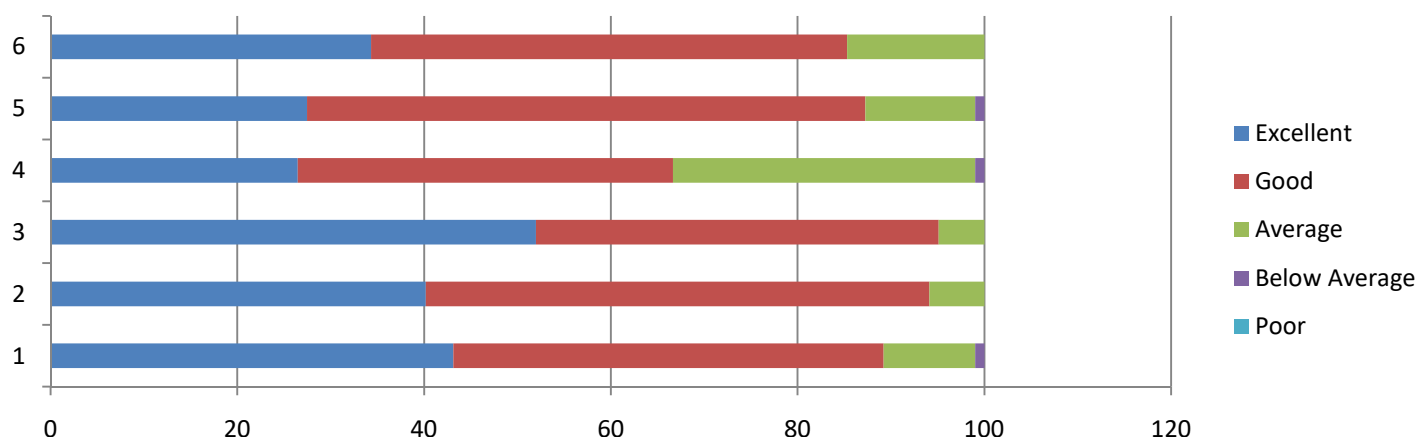
Session-2018-19

Student's Feedback regarding Curriculum-

The students are the most important stakeholder of Higher education system. The interest of participation of students at all levels both internal quality assurance and external quality assurance have played a central role.

We have collected feedback from our post graduate students. We have received (total 124 students) feedback on the syllabus of the various programmes designed by Pt.Ravishankar University Raipur and analyzed as follows-

Qu.no	Curriculum Evaluation Point	Response in%				
		Excellent	Good	Average	Below Average	Poor
1	Intensity of course material	43.137255	46.07843137	9.803921569	0.980392157	0
2	Course related to competitive exam	40.196078	53.92156863	5.882352941	0	0
3	Involvement of teacher and student in teaching and learning	51.960784	43.1372549	4.901960784	0	0
4	Completion of course during academic session	26.470588	40.19607843	32.35294118	0.980392157	0
5	Resource oriented course	27.45098	59.80392157	11.76470588	0.980392157	0



Opinion about the syllabus:

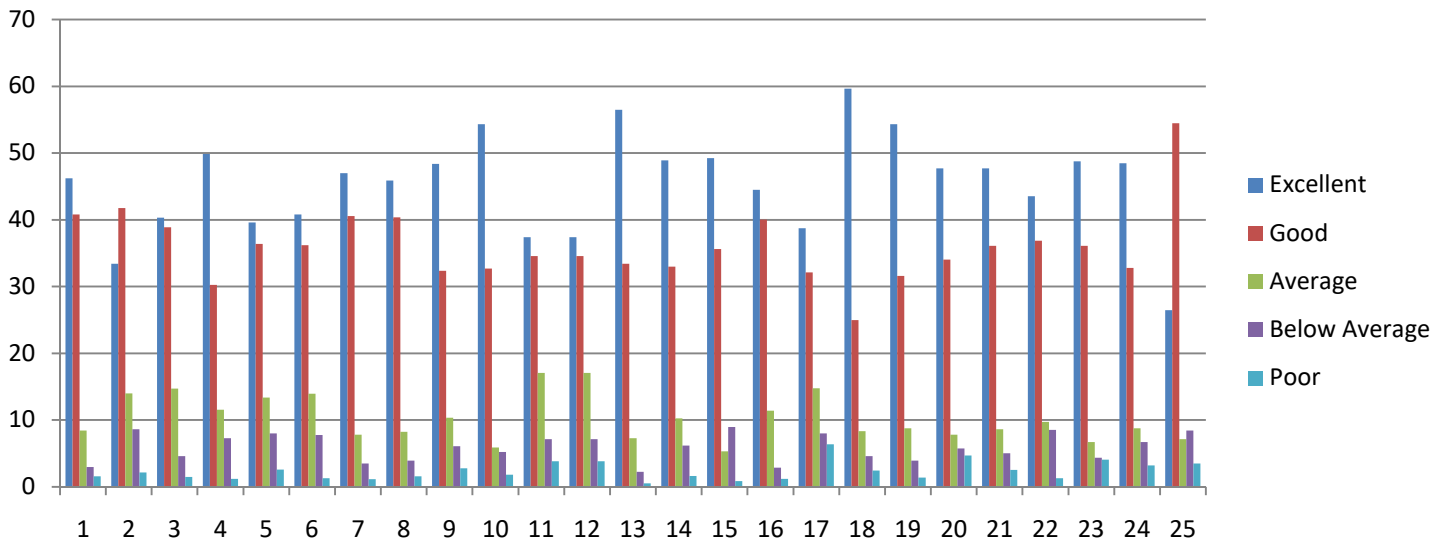
Excellent	Good	Average	Below Average	Poor
37.254902%	49.01960784%	13.23529412%	0.490196078%	0

Student Feedback for College Facilities

We have collected feedback from our post graduate students and Under graduate students. We have received total 1149 student's feedback on college facility and analyzed as follows-

Qu. no	Evaluation Point	Response in%				
		Excellent	Good	Average	Below Average	Poor
1	Discipline in the college	46.21409922	40.8181027	8.442123586	2.959094865	1.56658
2	Drinking water facility in college	33.42036554	41.7754569	14.01218451	8.61618799	2.175805
3	Toilet facility	40.29590949	38.9033943	14.70844212	4.612706701	1.479547
4	Library	49.8694517	30.0261097	11.57528285	7.310704961	1.218451
5	Canteen	39.59965187	36.3794604	13.40295909	8.006962576	2.610966
6	Parking Facility	40.8181027	36.205396	13.92515231	7.74586597	1.305483
7	Games and Sports	46.99738903	40.5570061	7.832898172	3.481288077	1.131419
8	Cultural Activity	45.86597041	40.3829417	8.268059182	3.916449086	1.56658
9	Seating Arrangement in class	48.38990426	32.3759791	10.35683203	6.092254134	2.78503
10	Light /Fan	54.30809399	32.7241079	5.91818973	5.221932115	1.827676
11	Facility of new technology	37.42384682	34.5517842	17.05831158	7.136640557	3.829417
12	Fee counter facility	44.38642298	39.3385553	9.834638816	4.873803307	1.56658
13	NCC/NSS/Youth Red Cross	56.48389904	33.4203655	7.310704961	2.26283725	0.522193
14	Girls Common Room	48.91209748	32.9852045	10.26979983	6.179286336	1.653612
15	Cleanliness in college Campus	49.26022628	35.5961706	5.308964317	8.964316797	0.870322
16	Departmental Activities	44.47345518	40.0348129	11.40121845	2.872062663	1.218451
17	Educational Tour (Essay ,discussion , debates ,etc)	38.72932985	32.1148825	14.70844212	8.006962576	6.440383
18	Ragging free Environment	59.61705831	24.9782419	8.355091384	4.612706701	2.436902
19	Sexual discrimination free environment	54.30809399	31.5926893	8.790252393	3.916449086	1.392515
20	Pollution free campus	47.69364665	34.0295909	7.832898172	5.744125326	4.699739
21	Participation in social works	47.69364665	36.1183638	8.61618799	5.047867711	2.523934

	(blood donation, PSC Coaching, etc)					
22	Participation in public awareness rally/works	43.51610096	37.075718	9.747606614	8.529155788	1.131419
23	Behavior of college staff with student	48.73803307	36.1183638	6.701479547	4.351610096	4.090513
24	Availability of Complaint Box	48.47693647	32.8111401	8.790252393	6.701479547	3.220191
25	Availability of Suggestion Box	43.86422977	37.075718	7.136640557	8.442123586	3.481288



Opinion about the College Facility :

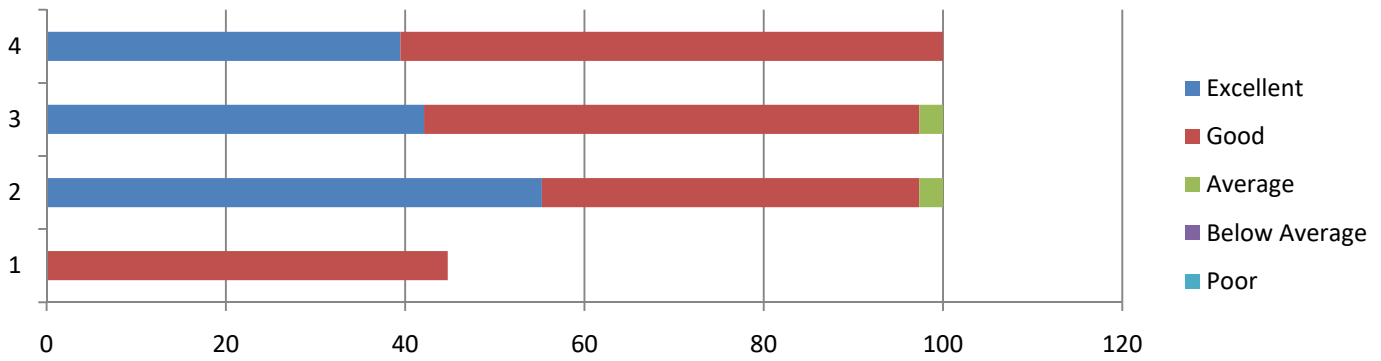
Excellent	Good	Average	Below Average	Poor
46.37424%	35.5196%	10.01218%	5.824195%	2.2698%

Teachers feedback for Curriculum

The college is affiliated to Pt. Ravishankar University , Raipur (C.G.) and follows the prescribed curriculum. We have collected feedback on curriculum from respective subject teachers regarding suggestion on improvement of the syllabus of PG Courses. We have received 38 teacher's feedback on the curriculum and analyzed as follows-

Qu.no	Curriculum Evaluation Point	Response in%				
		Excellent	Good	Average	Below Average	Poor
1	Availability of reference books and text books	0	44.73684	0	0	0
2	Quality and utility of the course	55.263158	42.10526	2.6315789	0	0

3	Job oriented course	42.105263	55.26316	2.6315789	0	0
4	Intensity if the course material	39.473684	60.52632	0	0	0



Opinion about the Syllabus by the Teachers :

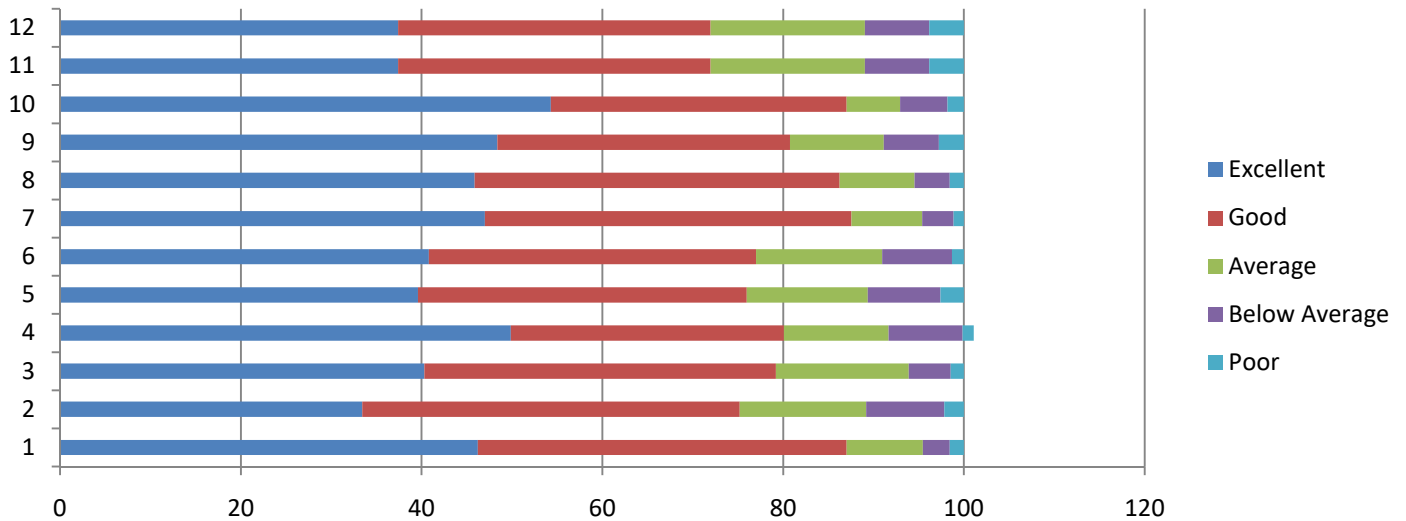
Excellent	Good	Average	Below Average	Poor
34.21053%	50.6579%	1.315789%	0	0

Student Feedback for Teachers

The feedback from the students is collected on the subject teacher of the various subjects and analyzed . We have received total 5434 students feedback.

Qu. no	Evaluation Point	Response in%				
		Excellent	Good	Average	Below Average	Poor
1	Punctuality of Teacher	68.62348178	26.3157895	4.214206846	0.533676849	0.31284505
2	Regularity of teacher	63.67316894	29.0577843	6.238498344	0.901729849	0.12881855
3	Subject knowledge	69.65403018	24.8987854	4.361428046	0.938535149	0.1472212
4	Expression of the subject and style	56.69856459	34.596982	7.158630843	1.067353699	0.4784689
5	Capability of maintaining discipline in the class	57.32425469	33.5664336	7.269046743	1.398601399	0.4416636
6	Facilitating the students with book ,notes, etc.	42.73095326	38.2039014	13.50754509	4.122193596	1.435406699
7	Referring secondary resources like Reference Book, Journals, website	38.33271991	38.7007729	14.97975709	5.355171145	2.631578947
8	Use of new technologies(Projector, Laptop, etc)	27.93522267	36.7316894	19.59882223	7.784320942	7.949944792
9	Use of class test ,Presentation, Seminar, etc.)	39.84173721	34.8914244	16.98564593	4.968715495	3.312476997

10	Employment related suggestion and guidance	37.52300331	37.0261318	16.74641148	5.299963195	3.404490247
11	To suggest students regarding various problems of life	47.55244755	34.0633051	12.23776224	4.030180346	2.116304748
12	Behaviors with student and emotional attachment	63.17629739	27.8800147	6.146485094	1.877070298	0.920132499



Opinion about the Teachers by the Student's :

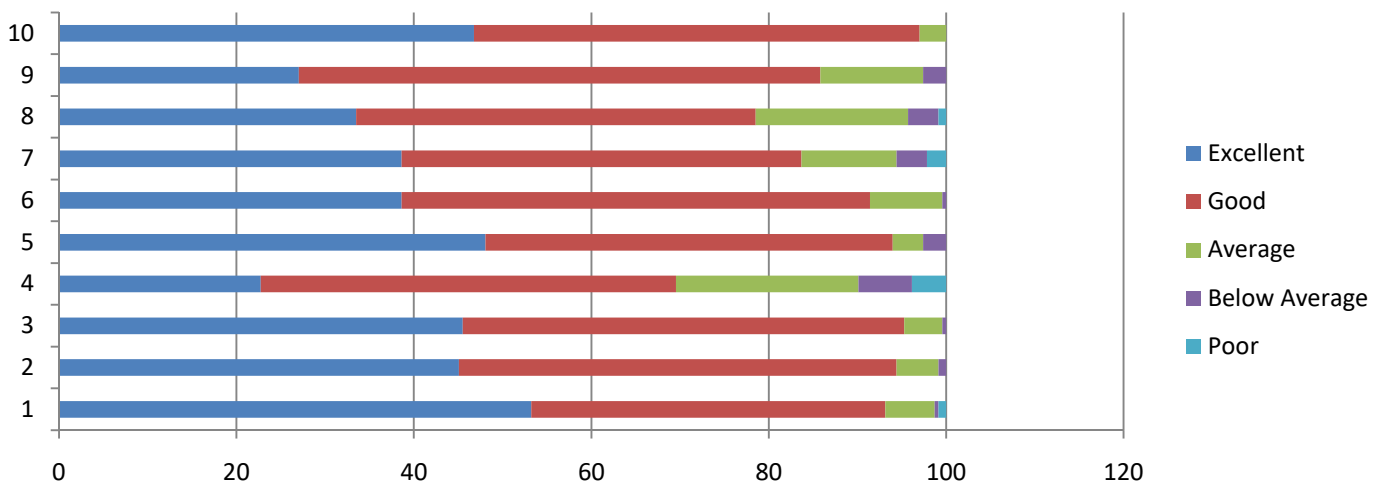
Excellent	Good	Average	Below Average	Poor
51.087%	32.99%	10.79%	3.19%	1.94%

Parent's Feedback For Teaching-Learning And College Facilities

The feedback from the parent collected on the teaching-learning and college facilities and analyzed .We have received total 233 parents feedback.

Qu. no	Evaluation Point	Response in %				
		Excellent	Good	Average	Below Average	Poor
1	Are there sufficient and competent teacher's in your college to teach your ward?	53.21888	39.9142	5.5794	0.429185	0.85837
2	Are you satisfied with teaching of teachers in the college?	45.06438	49.3562	4.72103	0.858369	0
3	Are you satisfied with study of your ward?	45.49356	49.7854	4.29185	0.429185	0
4	Do the teachers use modern technology?	22.74678	46.7811	20.6009	6.008584	3.86266

5	Is behavior of teachers ,office staff etc. of college positive towards students?	48.06867	45.9227	3.43348	2.575107	0
6	Is positive change/effect of the college reflected in your ward?	38.62661	52.7897	8.15451	0.429185	0
7	Are you satisfied with Library facility?	38.62661	45.0644	10.7296	3.433476	2.14592
8	Are you satisfied with the amenities such as drinking water, parking, etc in the college?	33.47639	45.0644	17.1674	3.433476	0.85837
9	Are you satisfied with cultural activities arranged for the students in the college?	27.03863	58.7983	11.588	2.575107	0
10	Will you advise other students to study in this college?	46.78112	50.2146	3.00429	0	0



Opinion about the Teaching-Learning And College Facilities by the Parents :

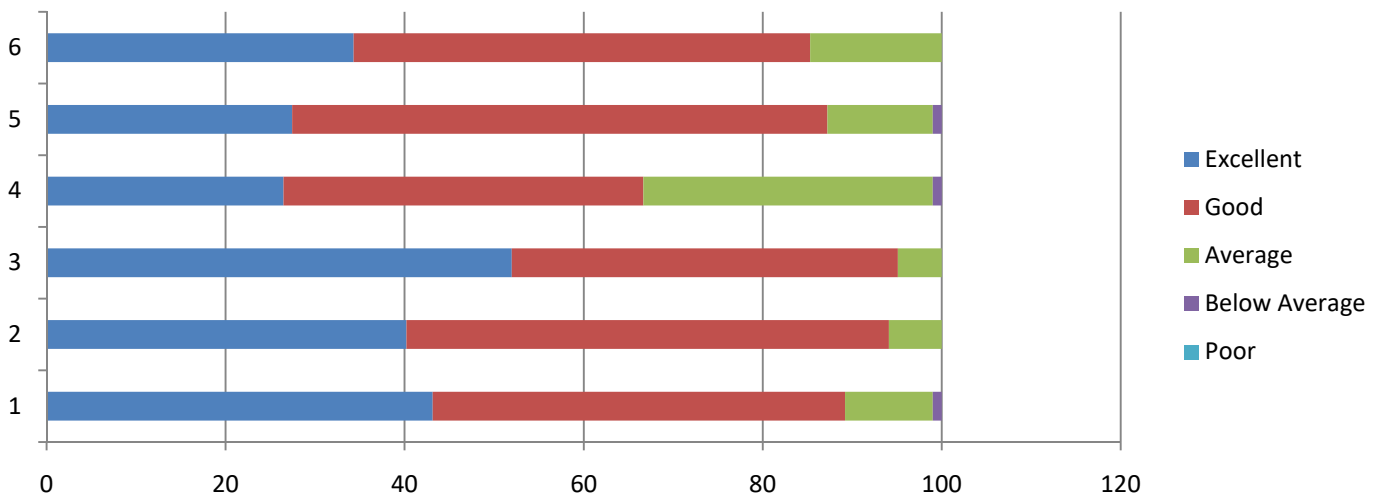
Excellent	Good	Average	Below Average	Poor
39.914%	48.37%	8.927%	2.017%	0.773%

Parent's Feedback for Syllabus by the Parents

The feedback from the parent collected on the syllabus of the various programmes .We have received total 102 parents feedback on the syllabus of the various programmes designed and analyzed as follows-

Qu. no	Curriculum Evaluation Point	Response in%				
		Excellent	Good	Average	Below Average	Poor
1	Job oriented course	43.14	46.08	9.8	0.98	0

2	Course useful for personality development	40.2	53.92	5.88	0	0
3	Development of mental ability by the course	51.96	43.14	4.9	0	0
4	Relevant course in solving local problems	26.47	40.2	32.35	0.98	0
5	Fulfillment of expectation by the course	27.45	59.8	11.76	0.98	0
6	Total effect	34.31	50.98	14.71	0	0



Opinion about the Syllabus by the Parents :

Excellent	Good	Average	Below Average	Poor
37.254902%	49.01960784%	13.23529412%	0.490196078%	0