

Feedback 2018-19

B.C.S.Govt.P.G.College, Dhamtari(C.G.)

The college aims to offer the best possible environment and learning experience to encourage students to perform to potential for academic achievement. Students, teachers and parents play an important role in the evaluation, development and enhancement of the quality of this learning experience.

Feedback from students, teachers and parents helps the college to evaluate how its service policies and changes as per stakeholders requirements. The Feedback Process has put an emphasis on the need for involvement of students in the quality assurance of higher education. Student involvement requires that students should act as collaborators, rather than merely passive receivers of teaching and learning process.

This college was established with the mission to provide guidance, identifying talent, and enhancing potential, encouraging students to follow their dreams and helping them become successful professionals.

Through Student feedback, the College continues to review, develop and implement policies and practices in key areas-

1. curriculum, governance, supervision and monitoring;
2. the creation of an academic culture in which all students and staff are expected to deploy higher-order thinking skills;
3. reinforcing clear expectations concerning unit content, assessments and outcomes;
4. feedback focused on improving teaching and enhancing lecturers professional knowledge.

Parents have entrusted the future of their children in our hands and thus they play a very important role in the development and enhancement of the quality of this learning experience.

Feedback from parents allows the college to evaluate its service provision and thus cater to providing excellent service towards the students. The feedback analysis process has put an increasing emphasis on the need for involvement of parents in the quality assurance of excellent education. Parent's involvement requires that they play an active role in participating for the holistic development of their children.

Parent's feedback has three main objectives:

1. To provide parents the opportunity to comment on the quality of their ward's learning experience, as required in preparation for and as part of review process.
2. To assess the success of academic provision in relation to the expectations of both the parents and the students.
3. To provide feedback to the faculties in order to improve delivery and/or content of the curriculum.

Every year at the mid session, feedback forms are distributed to the parents of postgraduate students. This circulation, distribution of feedback forms and collection of filled feedback forms was done by the IQAC department. The feedbacks are collected from all stakeholders by the IQAC through feedback committee and analyze them. After analysis of feedback an inclusive reports are prepared and communicated to the concerned teaching staff and head of department for their improvement. Feedback committee suggest improvement in the infrastructure and basic facilities after analyzing the feedback from the students regards the same.

S.No	Feedback Type	Objective	Frequency (in Year)
1	Students Feedback on college	Facilities in the campus	Once
2	Students Feedback	Design and Review of Curriculum	Once
3	Student Feedback on Teacher	Teaching of the Teacher	Once
4	Parents Feedback	Design and Review of Curriculum	Once
5	Teachers Feedback	Design and Review of Curriculum	Once
6	Parent's Feedback	Teaching- Learning and Facilities of College	Once

Report of Analysis of Feedback

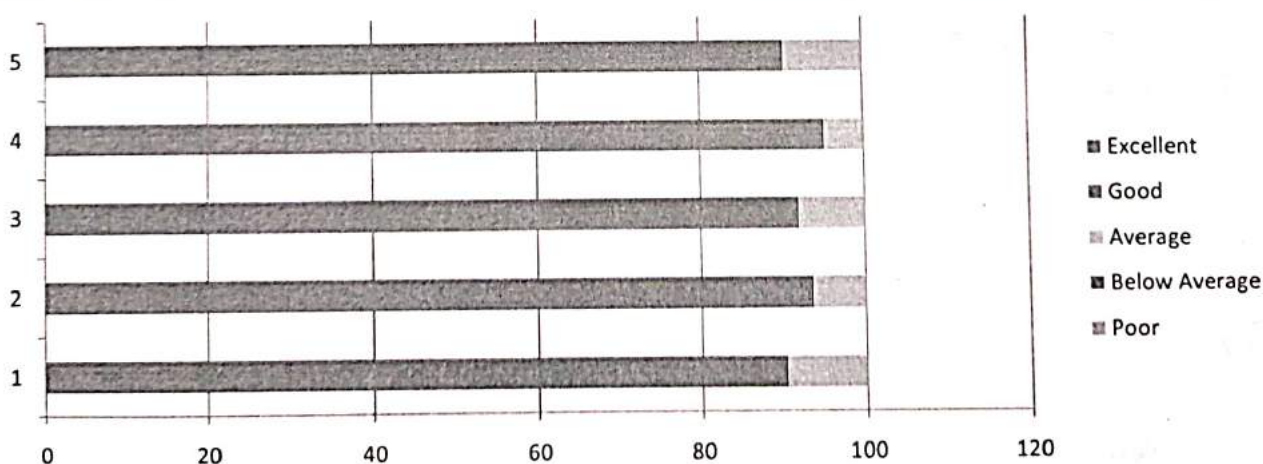
Session-2018-19

Student's Feedback regarding Curriculum-

The students are the most important stakeholder of Higher education system. The interest of participation of students at all levels both internal quality assurance and external quality assurance have played a central role.

We have collected feedback from our post graduate students. We have received (total 124 students) feedback on the syllabus of the various programmes designed by Pt.Ravishankar University Raipur and analyzed as follows-

Qu.no	Curriculum Evaluation Point	Response in%				
		Excellent	Good	Average	Below Average	Poor
1	Intensity of course material	44.35	45.97	9.68	0	0
2	Course related to competitive exam	47.58	45.97	6.45	0	0
3	Involvement of teacher and student in teaching and learning	62.9	29.04	8.06	0	0
4	Completion of course during academic session	52.42	42.74	4.84	0	0
5	Resource oriented course	41.94	48.38	9.68	0	0



Opinion about the syllabus:

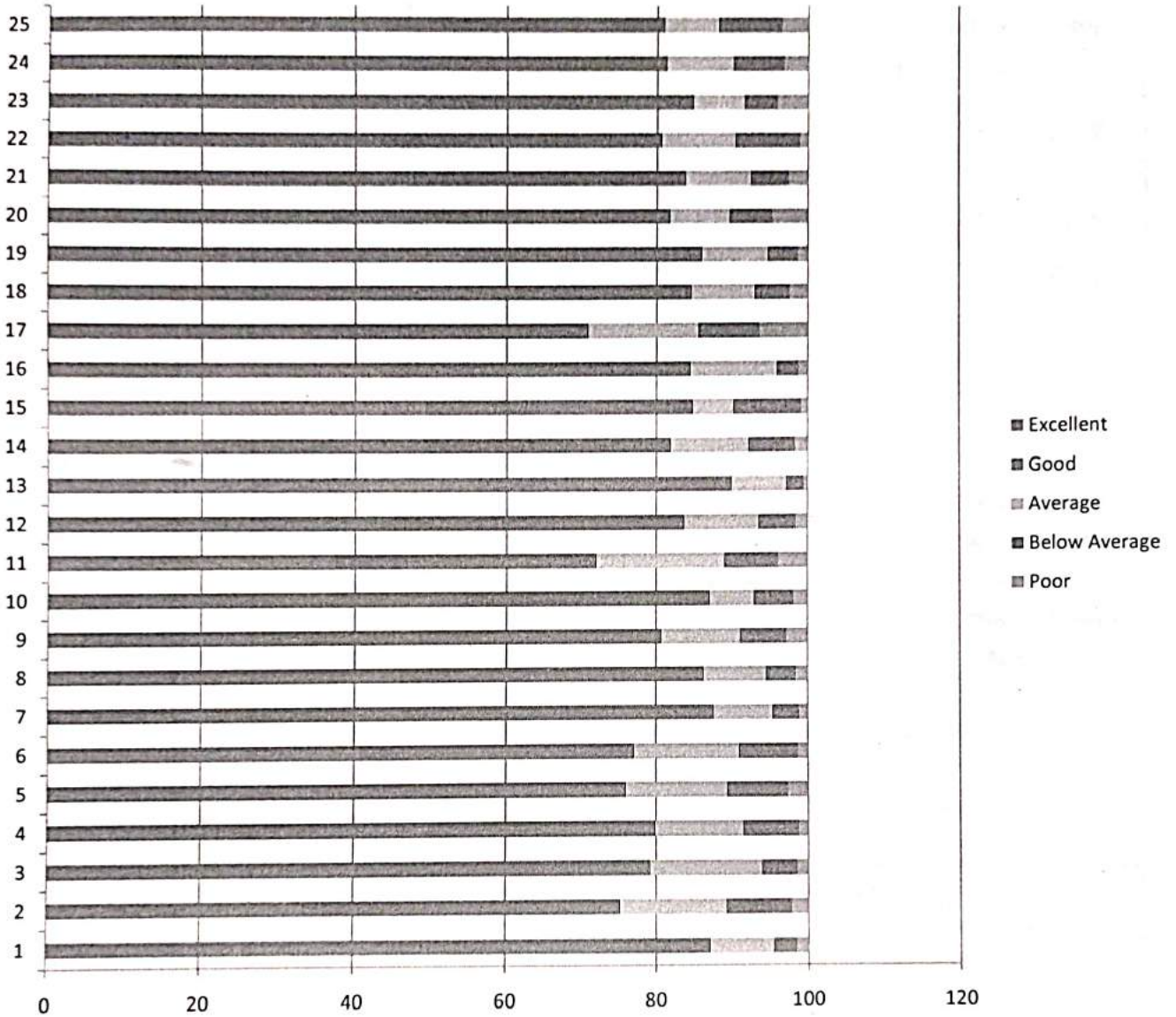
Excellent	Good	Average	Below Average	Poor
49.84%	42.42%	7.74%	0	0

Student Feedback for College Facilities

We have collected feedback from our post graduate students and Under graduate students. We have received total 1149 student's feedback on college facility and analyzed as follows-

Qu. no	Evaluation Point	Response in%				
		Excellent	Good	Average	Below Average	Poor
1	Discipline in the college	46.21	40.82	8.44	2.96	1.57
2	Drinking water facility in college	33.42	41.77	14.01	8.62	2.18
3	Toilet facility	40.29	38.91	14.71	4.61	1.48
4	Library	49.87	30.02	11.58	7.31	1.22
5	Canteen	39.6	36.37	13.41	8.01	2.61
6	Parking Facility	40.81	36.21	13.92	7.75	1.31
7	Games and Sports	46.99	40.57	7.83	3.48	1.13
8	Cultural Activity	45.87	40.37	8.27	3.92	1.57
9	Seating Arrangement in class	48.38	32.38	10.37	6.09	2.78
10	Light /Fan	54.31	32.72	5.92	5.22	1.83
11	Facility of new technology	37.42	34.55	17.06	7.14	3.83
12	Fee counter facility	44.39	39.33	9.84	4.87	1.57
13	NCC/NSS/Youth Red Cross	56.48	33.43	7.31	2.26	0.52
14	Girls Common Room	48.91	32.99	10.27	6.18	1.65
15	Cleanliness in college Campus	49.26	35.6	5.31	8.96	0.87
16	Departmental Activities	44.47	40.03	11.41	2.87	1.22
17	Educational Tour (Essay ,discussion , debates ,etc)	38.73	32.11	14.71	8.01	6.44
18	Ragging free Environment	59.62	24.98	8.35	4.61	2.44
19	Sexual discrimination free environment	54.31	31.59	8.79	3.92	1.39
20	Pollution free campus	47.69	34.05	7.83	5.74	4.69
21	Participation in social works	47.69	36.12	8.62	5.05	2.52

	(blood donation, PSC Coaching, etc)					
22	Participation in public awareness rally/works	43.52	37.07	9.75	8.53	1.13
23	Behavior of college staff with student	48.74	36.12	6.7	4.35	4.09
24	Availability of Complaint Box	48.48	32.81	8.79	6.7	3.22
25	Availability of Suggestion Box	43.86	37.08	7.14	8.44	3.48



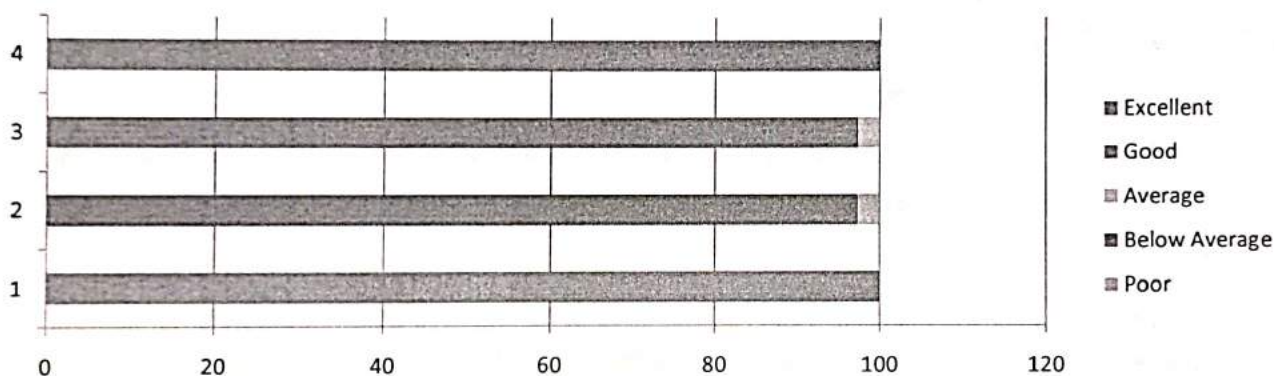
Opinion about the College Facility :

Excellent	Good	Average	Below Average	Poor
46.37%	35.52%	10.02%	5.82%	2.27%

Teachers feedback for Curriculum

The college is affiliated to Pt. Ravishankar University , Raipur (C.G.) and follows the prescribed curriculum. We have collected feedback on curriculum from respective subject teachers regarding suggestion on improvement of the syllabus of PG Courses. We have received 38 teacher's feedback on the curriculum and analyzed as follows-

Qu.no	Curriculum Evaluation Point	Response in%				
		Excellent	Good	Average	Below Average	Poor
1	Availability of reference books and text books	55.26	44.73	0	0	0
2	Quality and utility of the course	55.26	42.11	2.63	0	0
3	Job oriented course	42.11	55.26	2.63	0	0
4	Intensity if the course material	39.47	60.53	0	0	0



Opinion about the Syllabus by the Teachers :

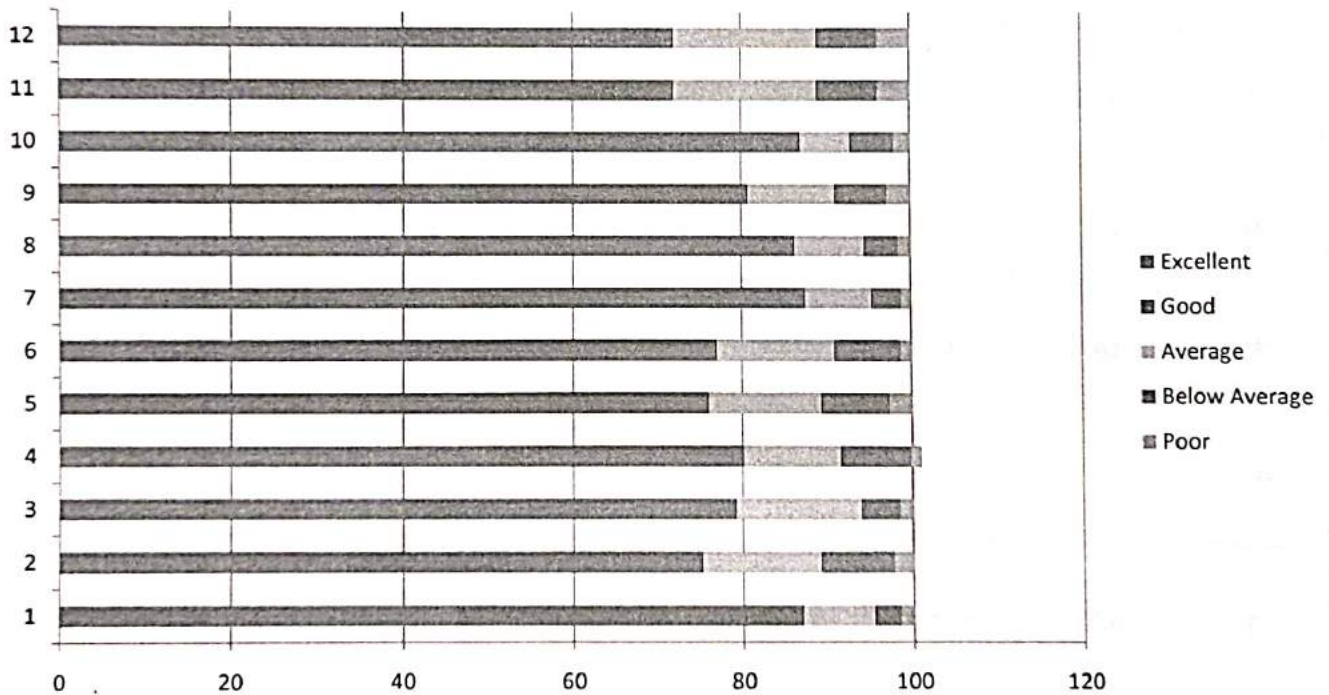
Excellent	Good	Average	Below Average	Poor
34.21%	50.66%	1.32%	0	0

Student Feedback for Teachers

The feedback from the students is collected on the subject teacher of the various subjects and analyzed . We have received total 5434 students feedback.

Qu. no	Evaluation Point	Response in%				
		Excellent	Good	Average	Below Average	Poor

1	Punctuality of Teacher	68.62	26.32	4.21	0.53	0.32
2	Regularity of teacher	63.67	29.06	6.24	0.9	0.13
3	Subject knowledge	69.65	24.9	4.36	0.94	0.15
4	Expression of the subject and style	56.7	34.59	7.16	1.07	0.48
5	Capability of maintaining discipline in the class	57.32	33.58	7.27	1.39	0.44
6	Facilitating the students with book ,notes, etc.	42.73	38.2	13.51	4.12	1.44
7	Referring secondary resources like Reference Book, Journals, website	38.33	38.7	14.98	5.36	2.63
8	Use of new technologies(Projector, Laptop, etc)	27.94	36.73	19.6	7.78	7.95
9	Use of class test ,Presentation, Seminar, etc.)	39.84	34.89	16.99	4.97	3.31
10	Employment related suggestion and guidance	37.52	37.03	16.75	5.29	3.41
11	To suggest students regarding various problems of life	47.55	34.06	12.24	4.03	2.12
12	Behaviors with student and emotional attachment	63.18	27.88	6.15	1.87	0.92



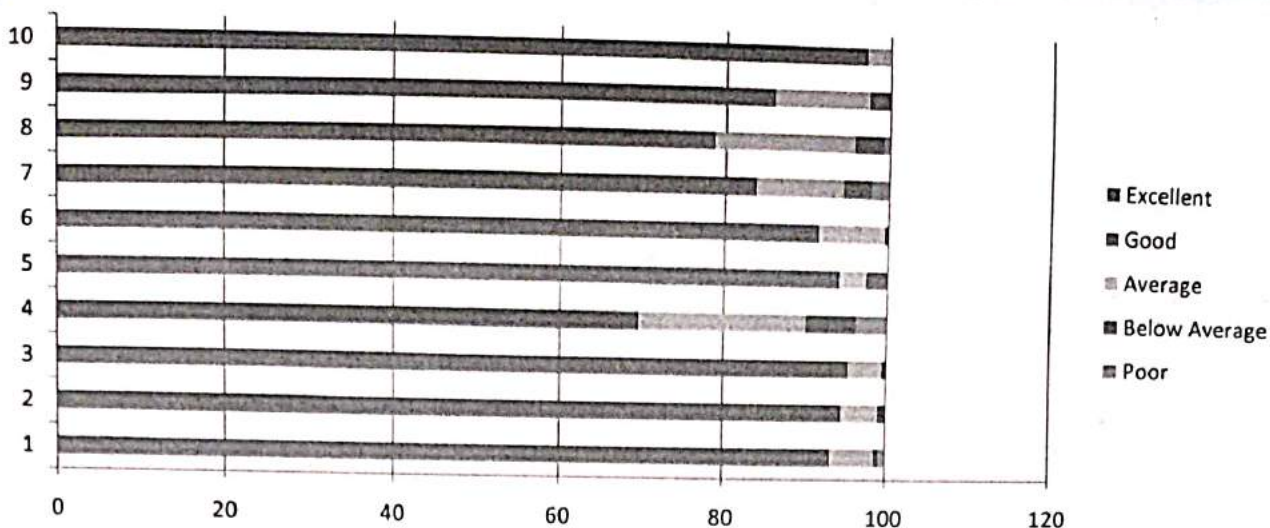
Opinion about the Teachers by the Student's :

Excellent	Good	Average	Below Average	Poor
51.09%	32.99%	10.79%	3.19%	1.94%

Parent's Feedback For Teaching-Learning And College Facilities

The feedback from the parent collected on the teaching-learning and college facilities and analyzed .We have received total 233 parents feedback.

Qu. no	Evaluation Point	Response in %				
		Excellent	Good	Average	Below Average	Poor
1	Are there sufficient and competent teacher's in your college to teach your ward?	53.22	39.91	5.58	0.43	0.86
2	Are you satisfied with teaching of teachers in the college?	45.06	49.36	4.72	0.86	0
3	Are you satisfied with study of your ward?	45.49	49.79	4.29	0.43	0
4	Do the teachers use modern technology?	22.75	46.78	20.6	6.01	3.86
5	Is behavior of teachers ,office staff etc. of college positive towards students?	48.07	45.92	3.43	2.58	0
6	Is positive change/effect of the college reflected in your ward?	38.63	52.79	8.15	0.43	0
7	Are you satisfied with Library facility?	38.63	45.06	10.73	3.43	2.15
8	Are you satisfied with the amenities such as drinking water, parking, etc in the college?	33.48	45.06	17.17	3.43	0.86
9	Are you satisfied with cultural activities arranged for the students in the college?	27.04	58.79	11.59	2.58	0
10	Will you advise other students to study in this college?	46.78	50.21	3.01	0	0



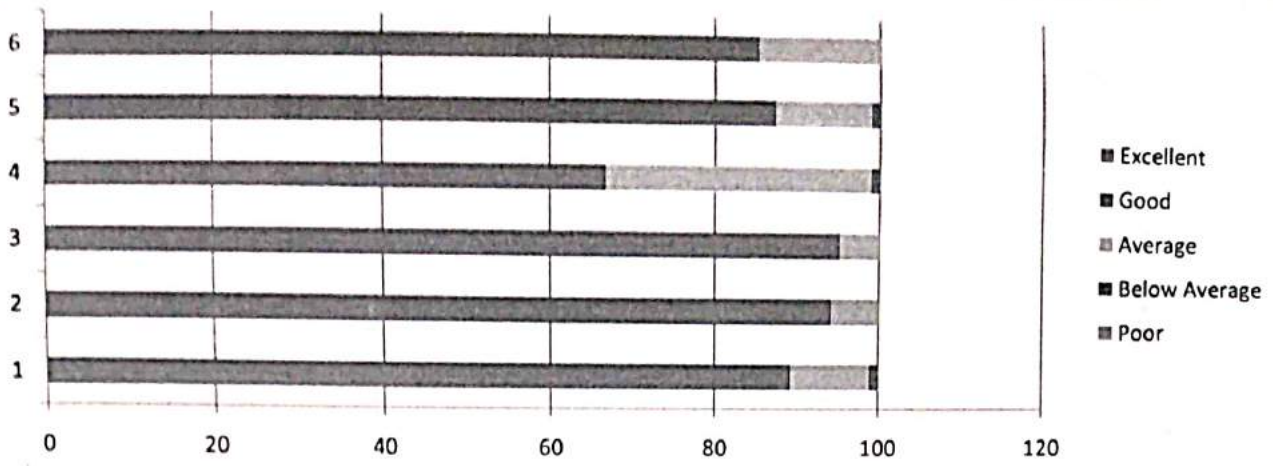
Opinion about the Teaching-Learning And College Facilities by the Parents :

Excellent	Good	Average	Below Average	Poor
39.91%	48.37%	8.93%	2.02%	0.77%

Parent’s Feedback for Syllabus by the Parents

The feedback from the parent collected on the syllabus of the various programmes .We have received total 102 parents feedback on the syllabus of the various programmes designed and analyzed as follows-

Qu. no	Curriculum Evaluation Point	Response in%				
		Excellent	Good	Average	Below Average	Poor
1	Job oriented course	43.14	46.08	9.8	0.98	0
2	Course useful for personality development	40.2	53.92	5.88	0	0
3	Development of mental ability by the course	51.96	43.14	4.9	0	0
4	Relevant course in solving local problems	26.47	40.2	32.35	0.98	0
5	Fulfillment of expectation by the course	27.45	59.8	11.76	0.98	0
6	Total effect	34.31	50.98	14.71	0	0



Opinion about the Syllabus by the Parents :

Excellent	Good	Average	Below Average	Poor
37.25%	49.02%	13.24%	0.49%	0

Chahy

In-charge Feedback Committee
Dr. Chandrika Sahu

Principal

Principal
B.C.S.Govt.P.G.College Dhamtari
Principal
B.C.S. Govt. P. G. College
Dhamtari (C.G.)