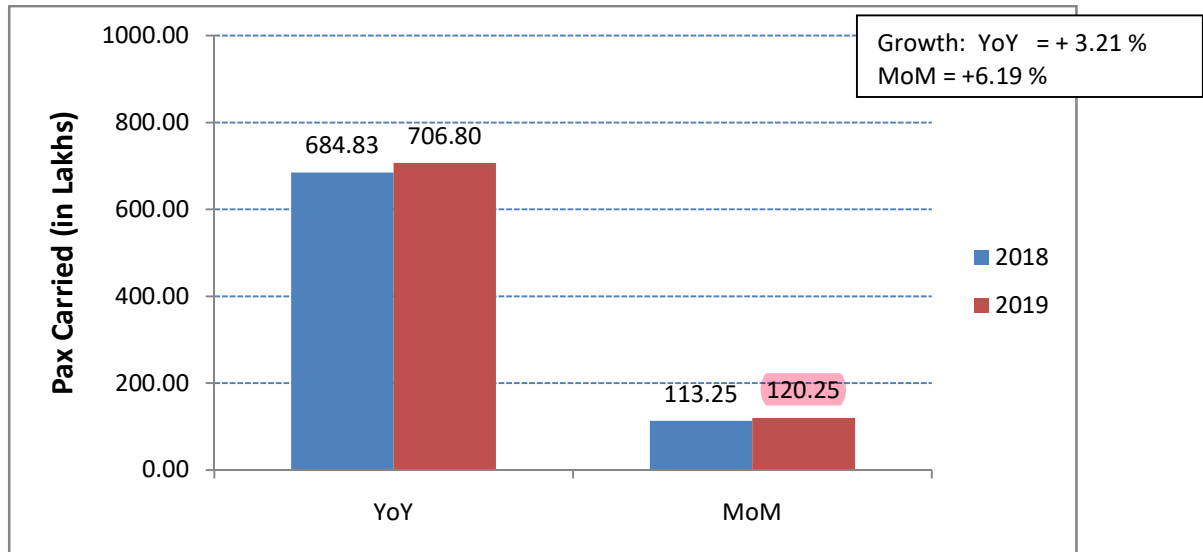


Subject: Performance of domestic airlines for the year 2019.

Traffic data submitted by various domestic airlines has been analysed for the month of June 2019. Following are the salient features:

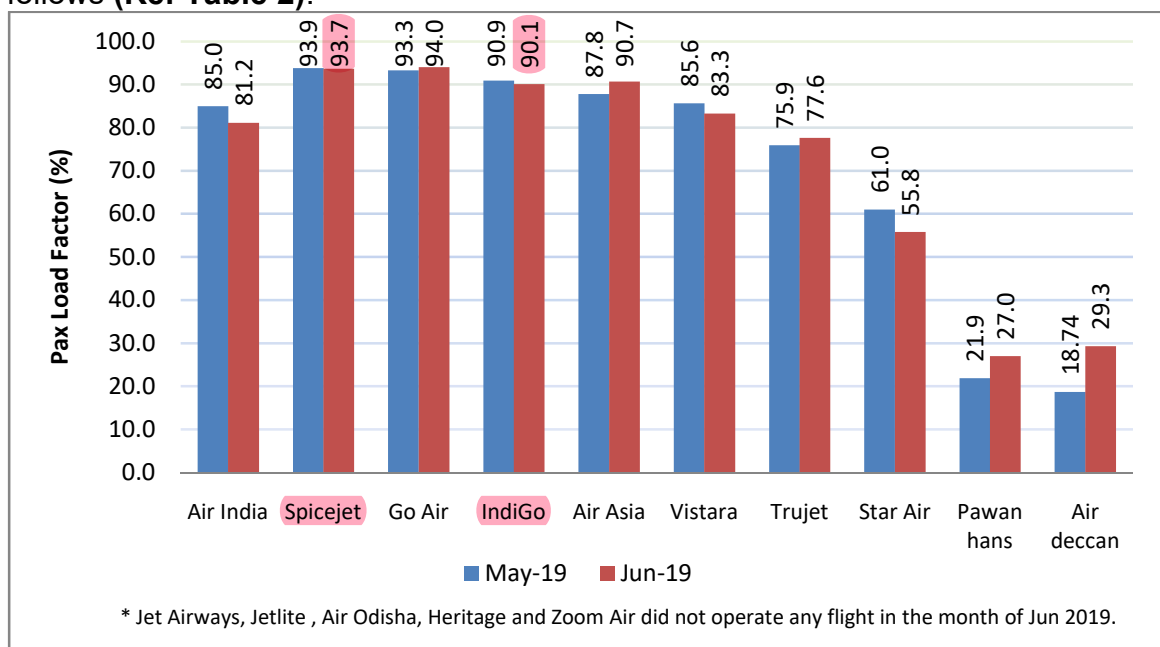
Passenger Growth

Passengers carried by domestic airlines during Jan-June 2019 were **706.80 lakhs** as against **684.83 lakhs** during the corresponding period of previous year thereby registering a **growth of 3.21% (Ref Table 1)**.



Passenger Load Factor

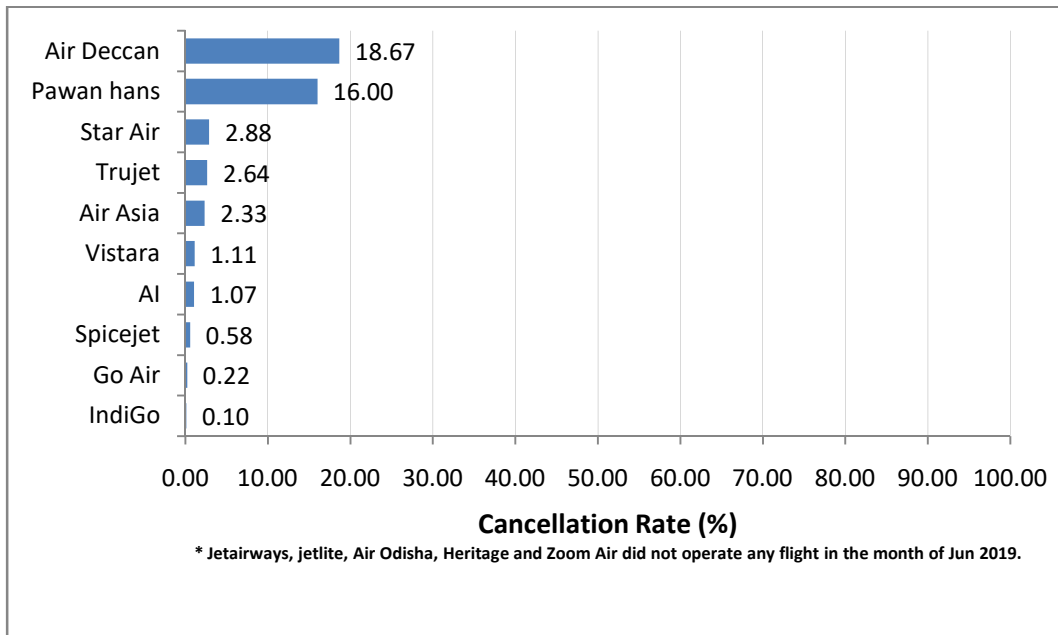
The passenger load factors of various scheduled domestic airlines in June 2019 are as follows (**Ref Table 2**):



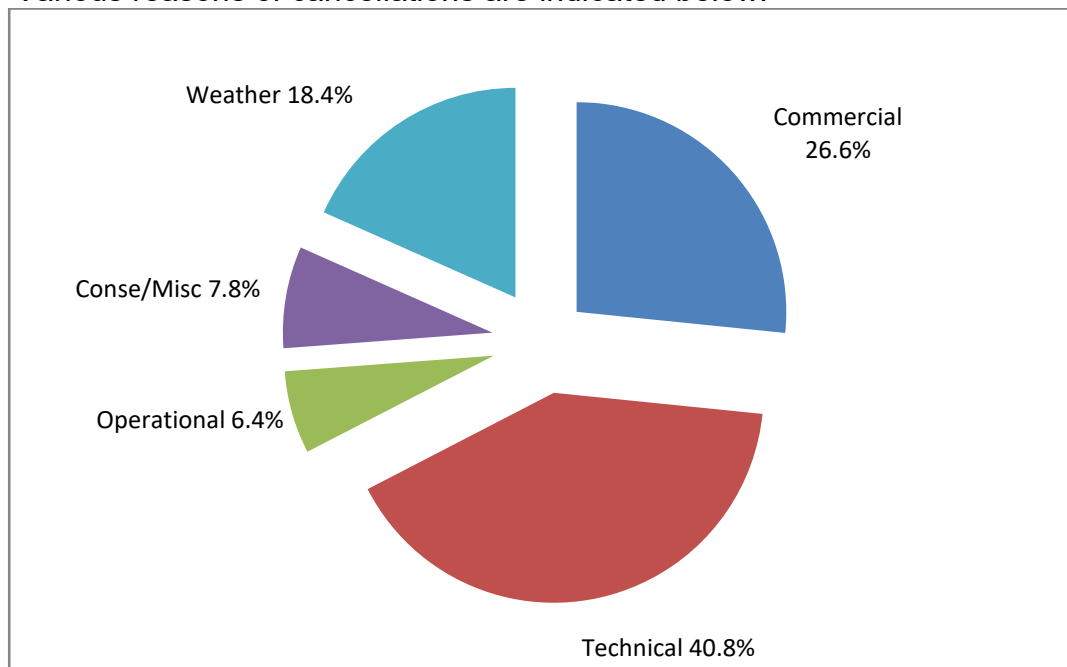
The passenger load factor in the month of Jun 2019 has shown marginally increasing trend compared to previous month due to ongoing tourist season.

Cancellations

The overall cancellation rate of scheduled domestic airlines for the month of Jun 2019 has been 0.59%. Airline-wise details of cancellations are as follows:

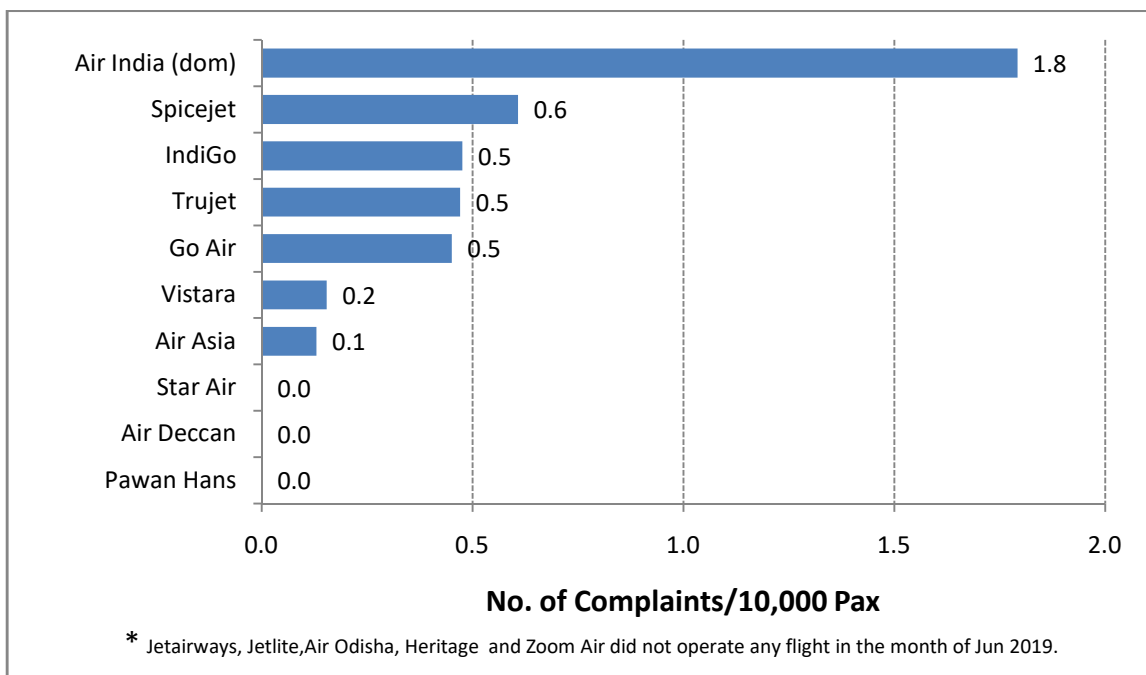


Various reasons of cancellations are indicated below:

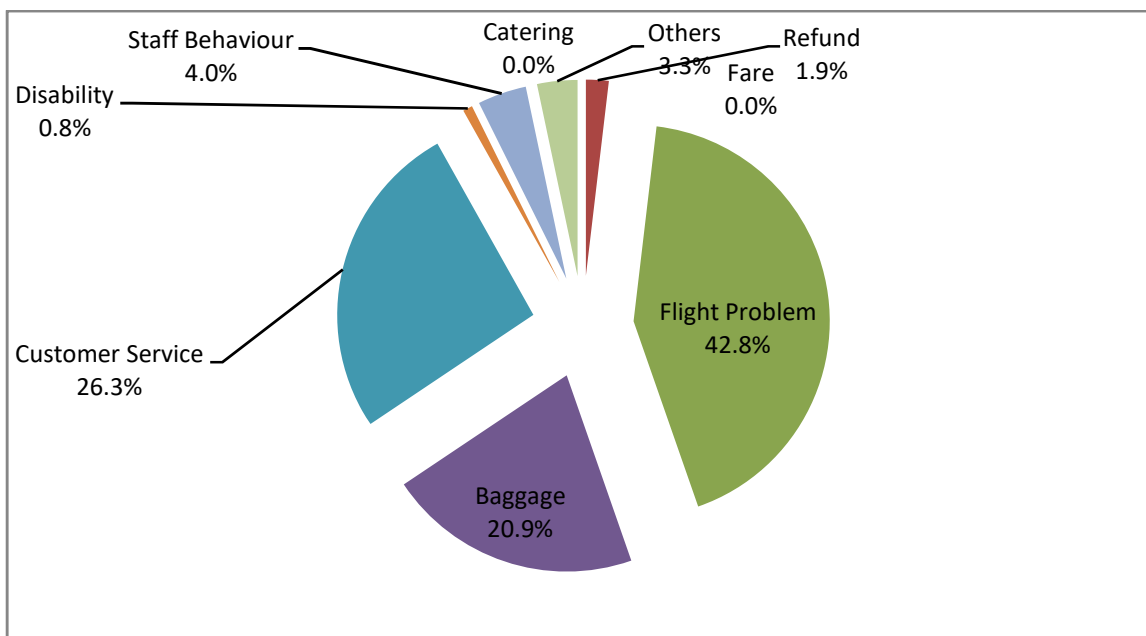


Passenger Complaints during the month

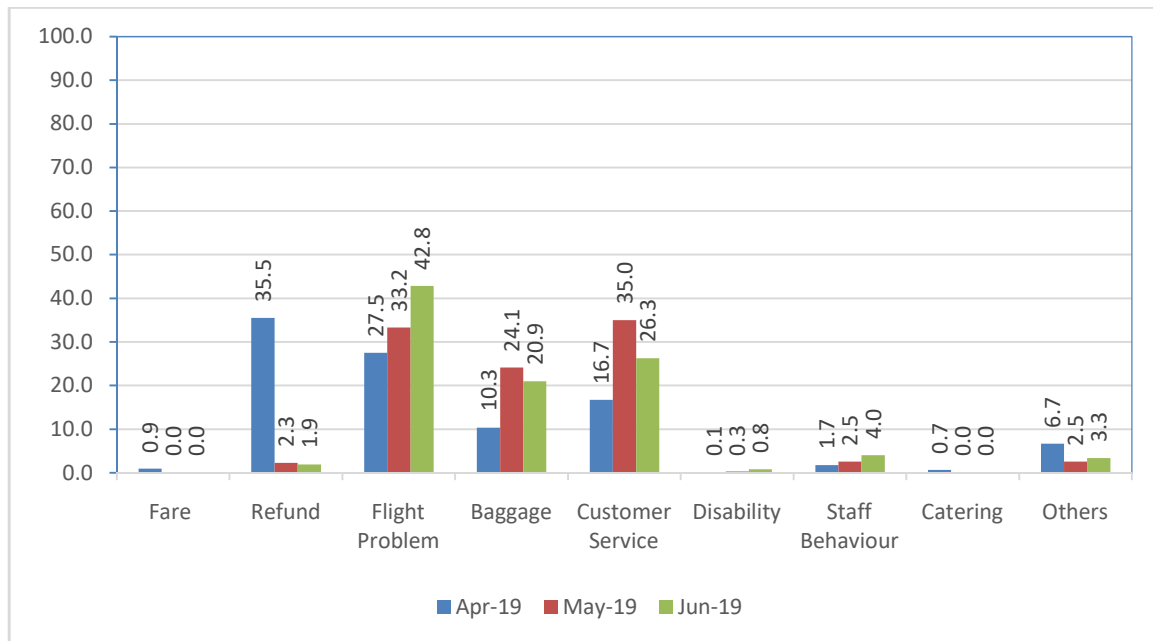
During June 2019, a total of 750 passenger related complaints had been received by the scheduled domestic airlines. The number of complaints per 10,000 passengers carried for the month of Jun 2019 has been around 0.62. The airline-wise details are as follows:



Various reasons of passenger complaints are indicated below:



The reason for complaint as percentage compared to the previous month is as follows:



Airline-wise status of redressal of complaints is given at Table – 4.

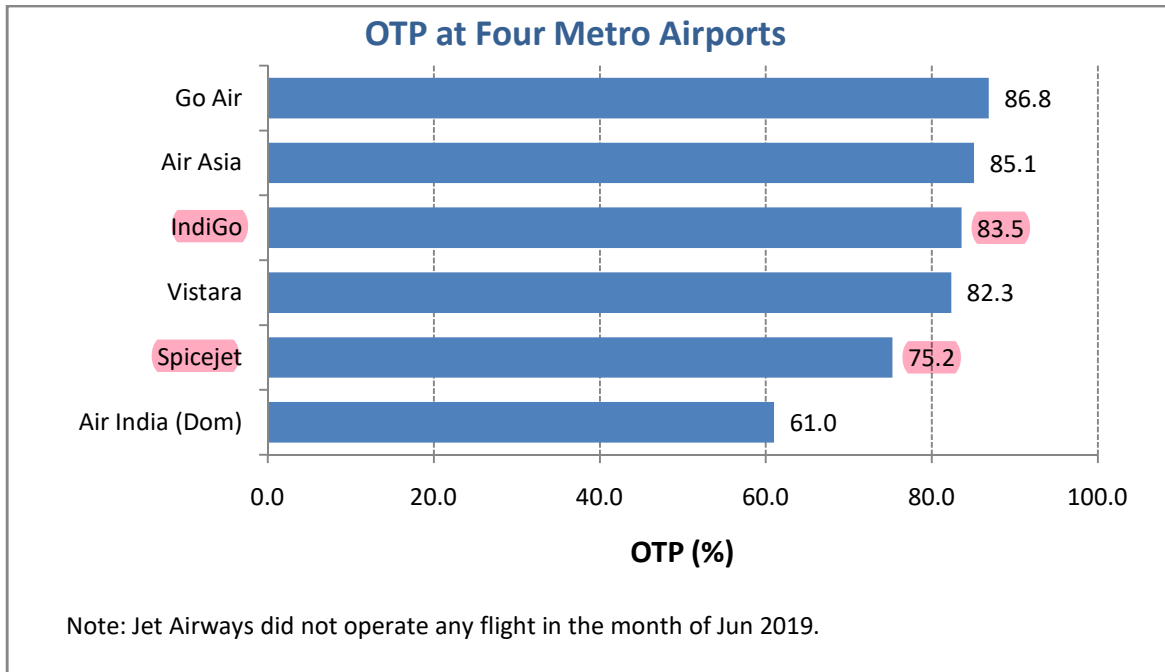
Compliance of Route Dispersal Guidelines

Airline-wise Compliance of Route Dispersal Guidelines during the month of Jun 2019 is given in the following table.

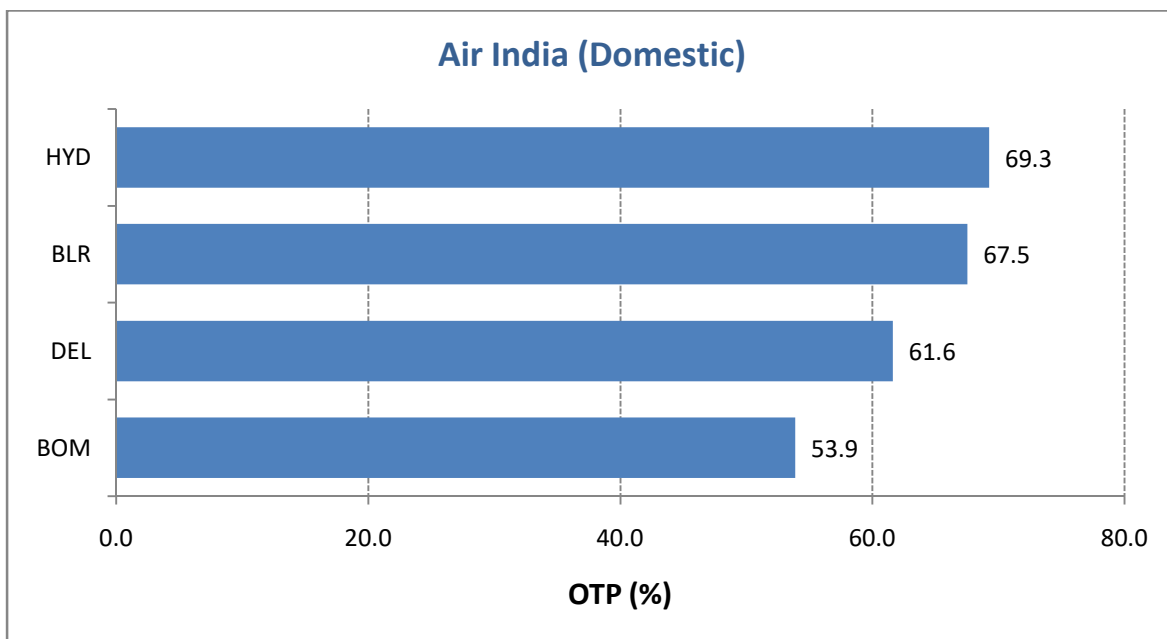
Airline	ASKM Deployment (%) of Category I		
	Cat III	Cat IIA	Cat II
Air India + Alliance Air	106.0	1.50	27.8
Spicejet	117.9	1.53	45.9
Go Air	93.8	1.08	27.8
IndiGo	145.8	1.14	34.2
Vistara	39.7	1.49	15.8
Air Asia	76.8	1.45	46.5
Minimum Capacity Requirement in accordance with RDG (As % of Capacity Deployed in Category I)			
• Category II	-	10%	
• Category IIA	-	1%	
• Category III	-	35%	

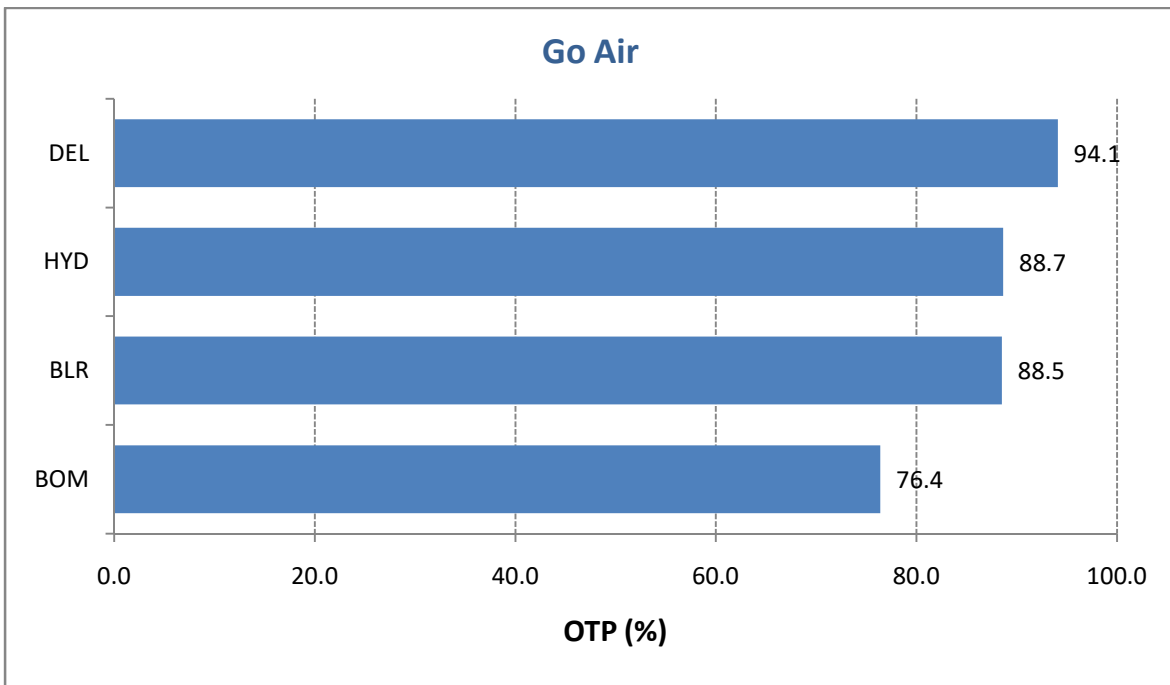
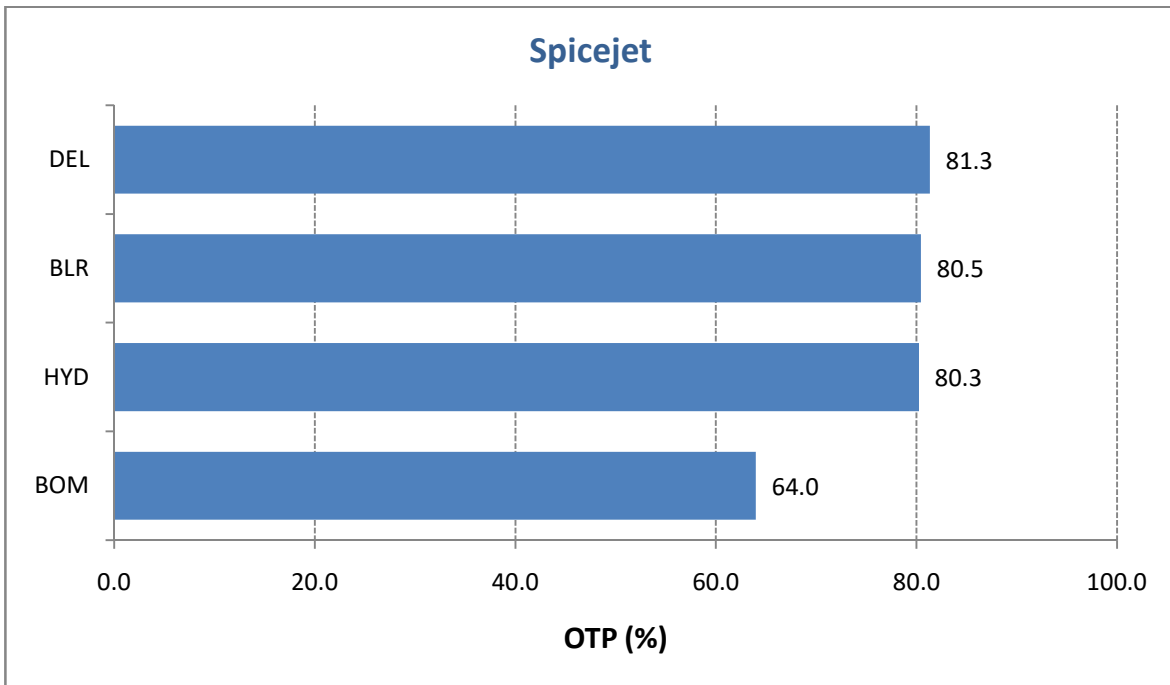
On-Time Performance (Scheduled Domestic Airlines)

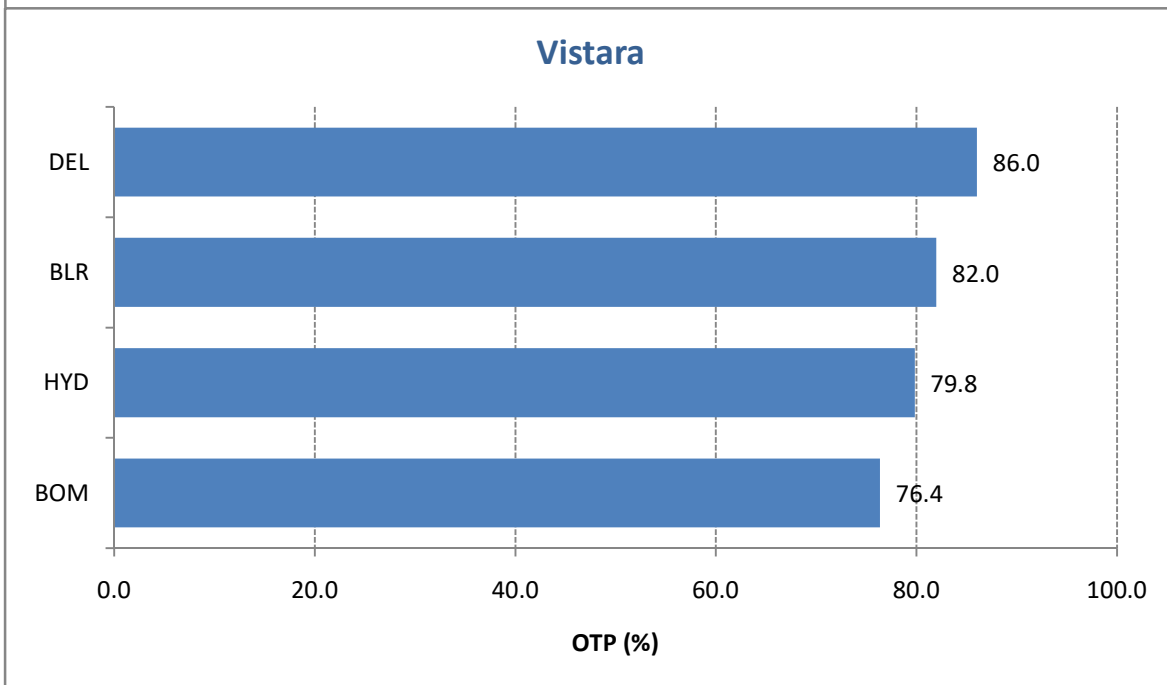
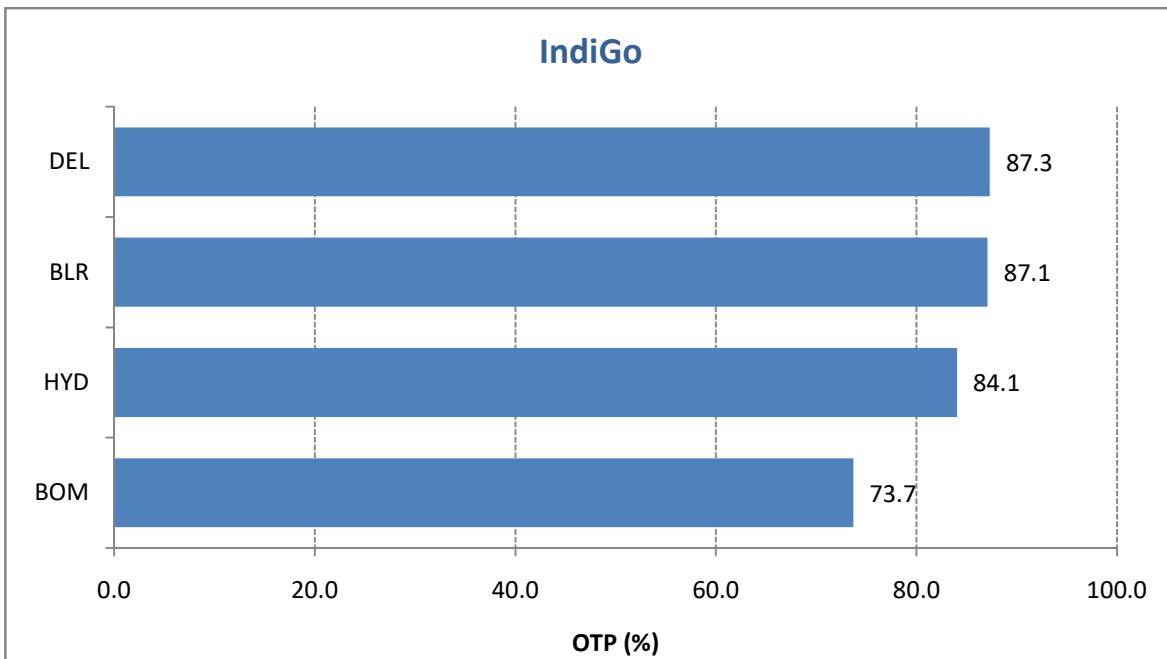
On-Time Performance (OTP) of scheduled domestic airlines has been computed for four metro airports viz. Bangalore, Delhi, Hyderabad and Mumbai. Airline-wise OTP at four metro airports for the month of Jun 2019 is as follows:

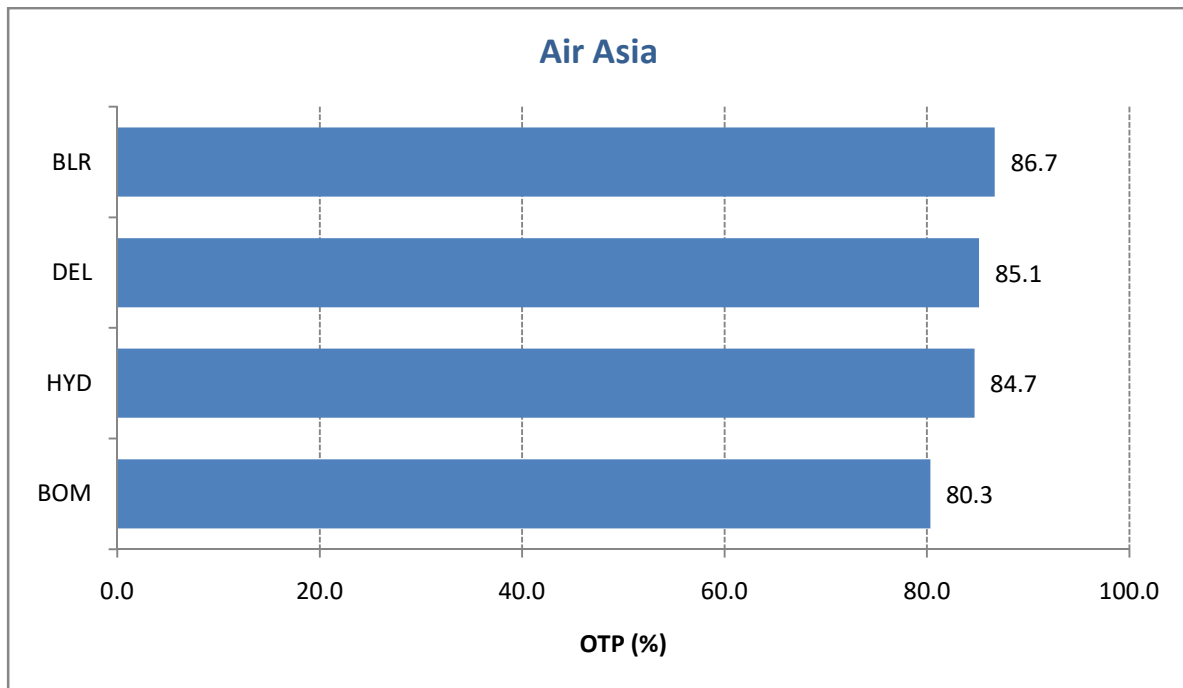


Airport-wise On-Time Performance of scheduled domestic airlines complying with Route Dispersal Guidelines is as follows:

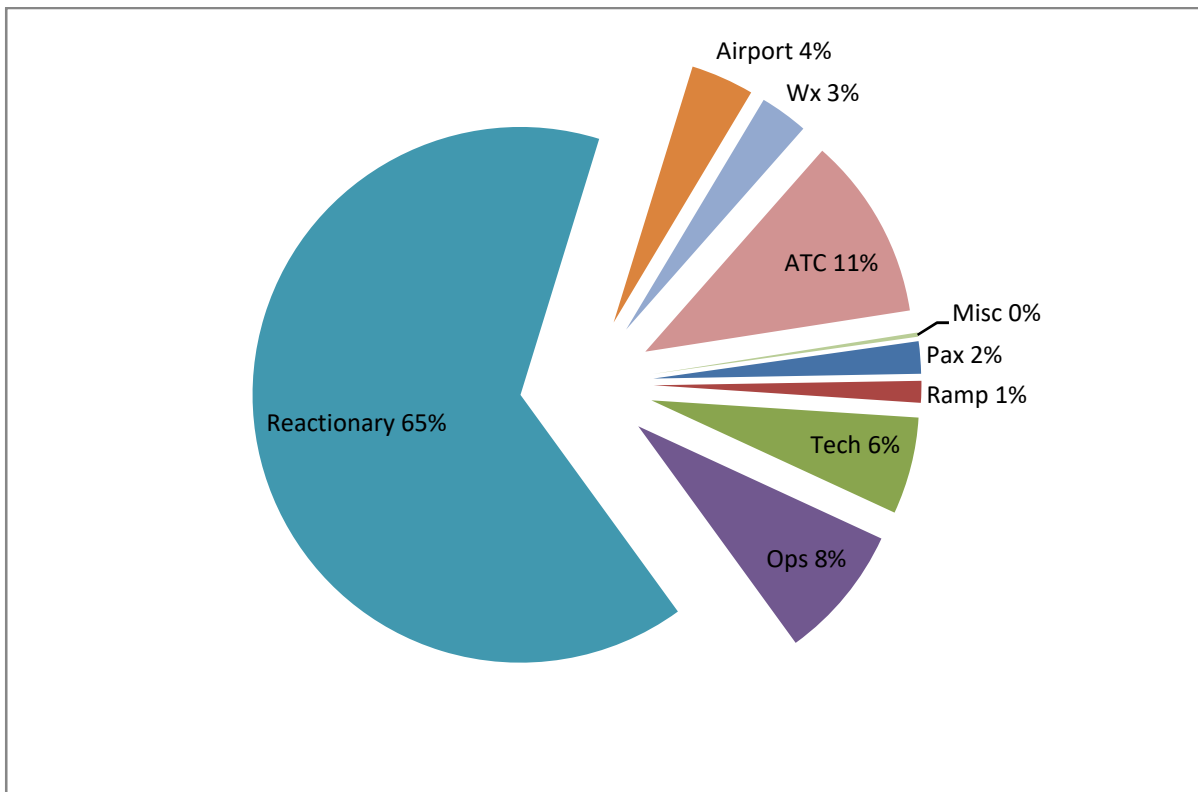








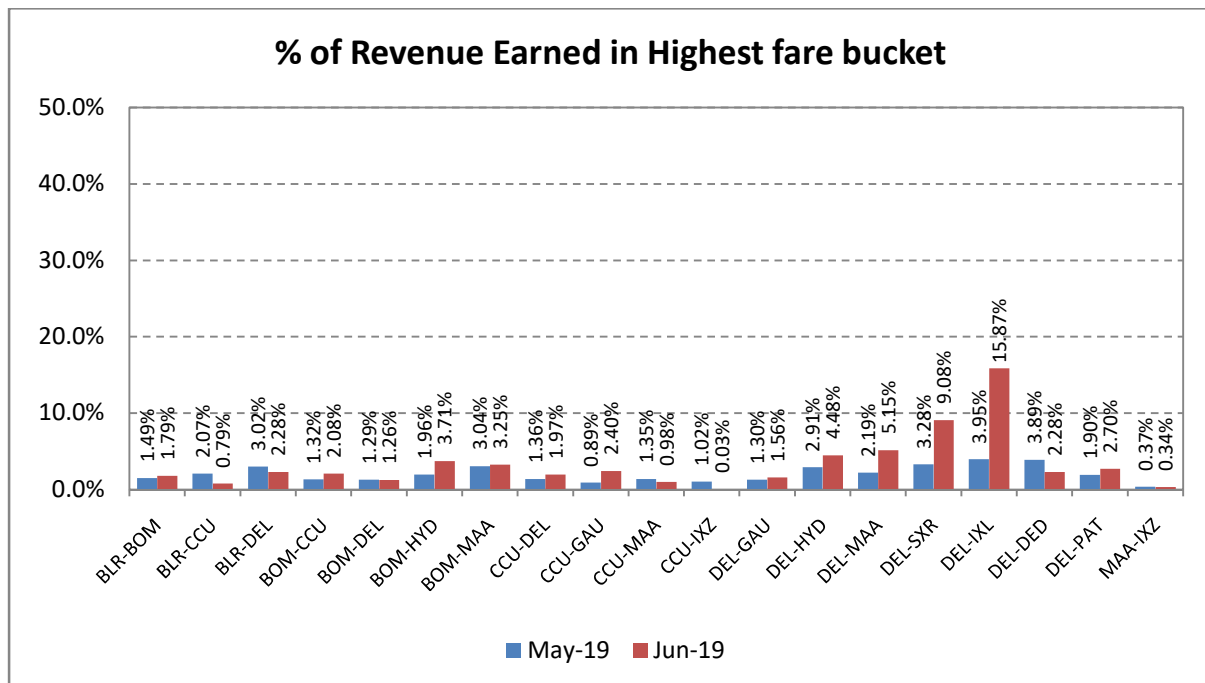
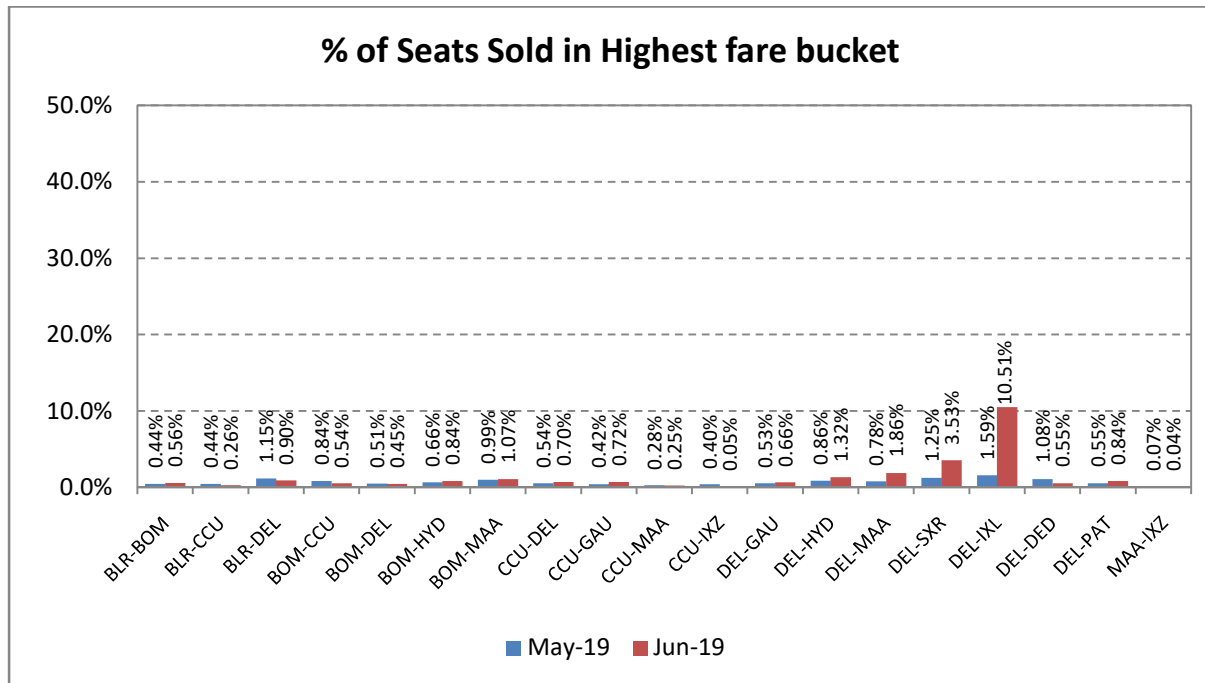
Reasons for delay have been analysed, which are presented below. It has been found that majority of delays have been attributed to 'Reactionary'.



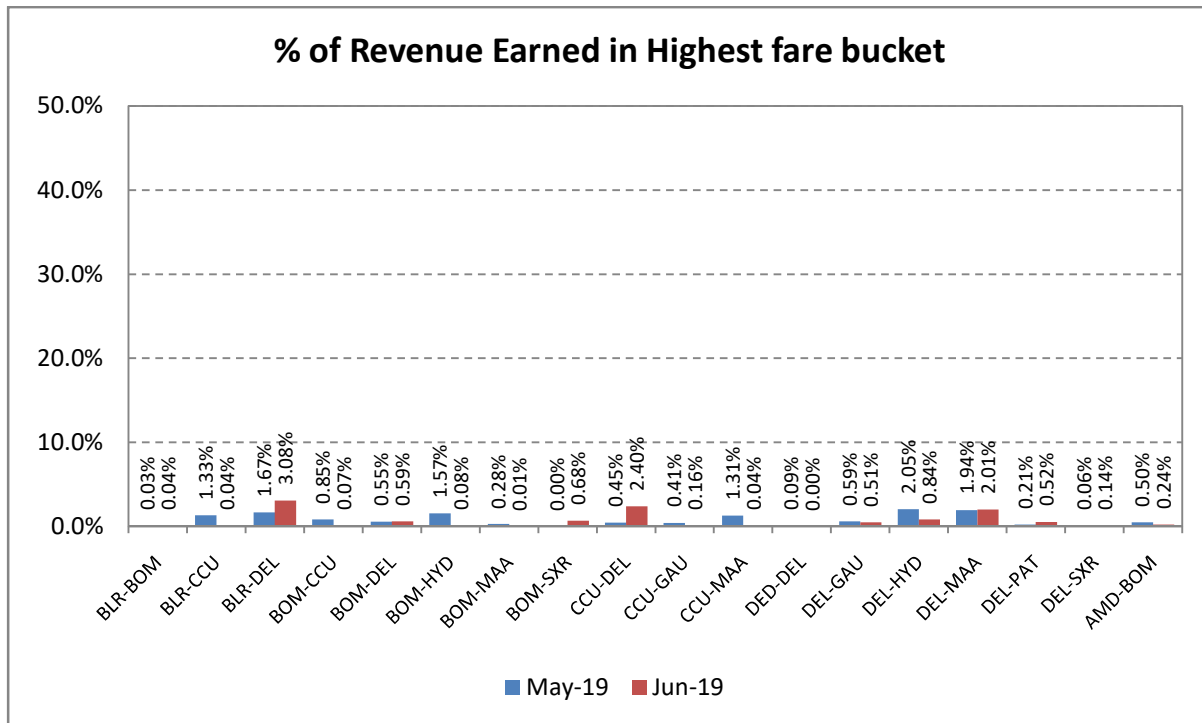
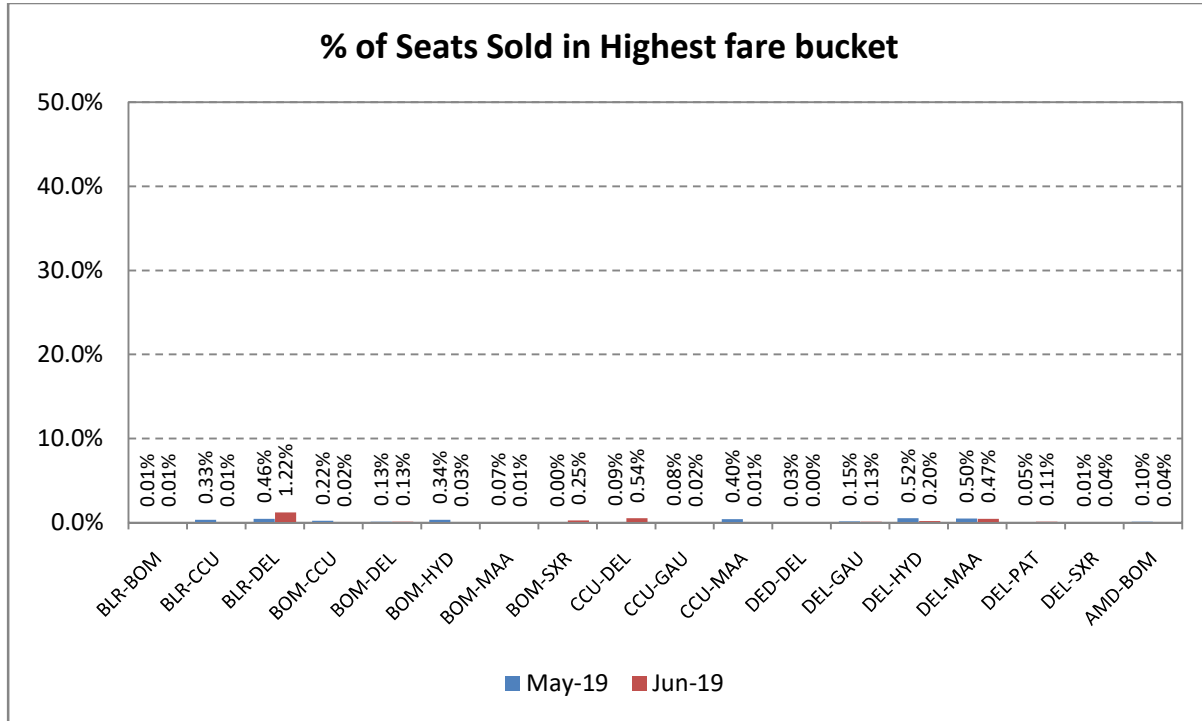
Revenue Earned & Seats Sold in Highest Fare Bucket

The revenue earned and the number of seats sold by scheduled private airlines in the highest fare bucket on select 20 sectors is as follows:

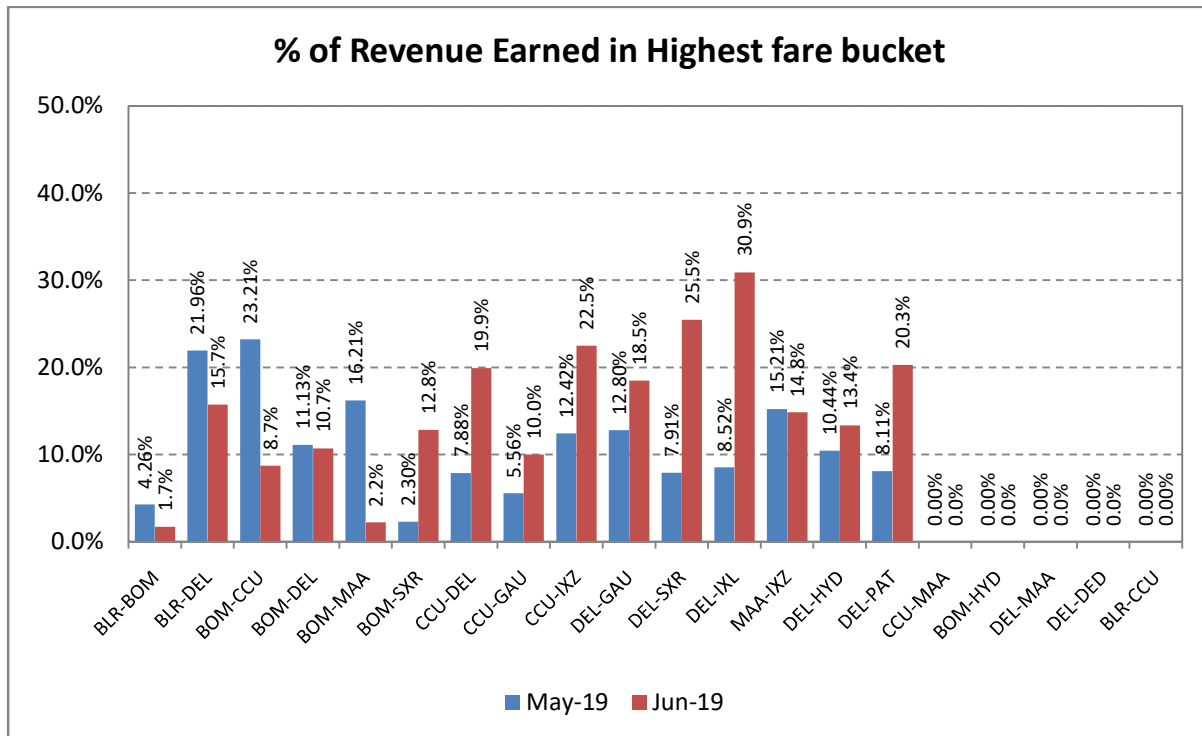
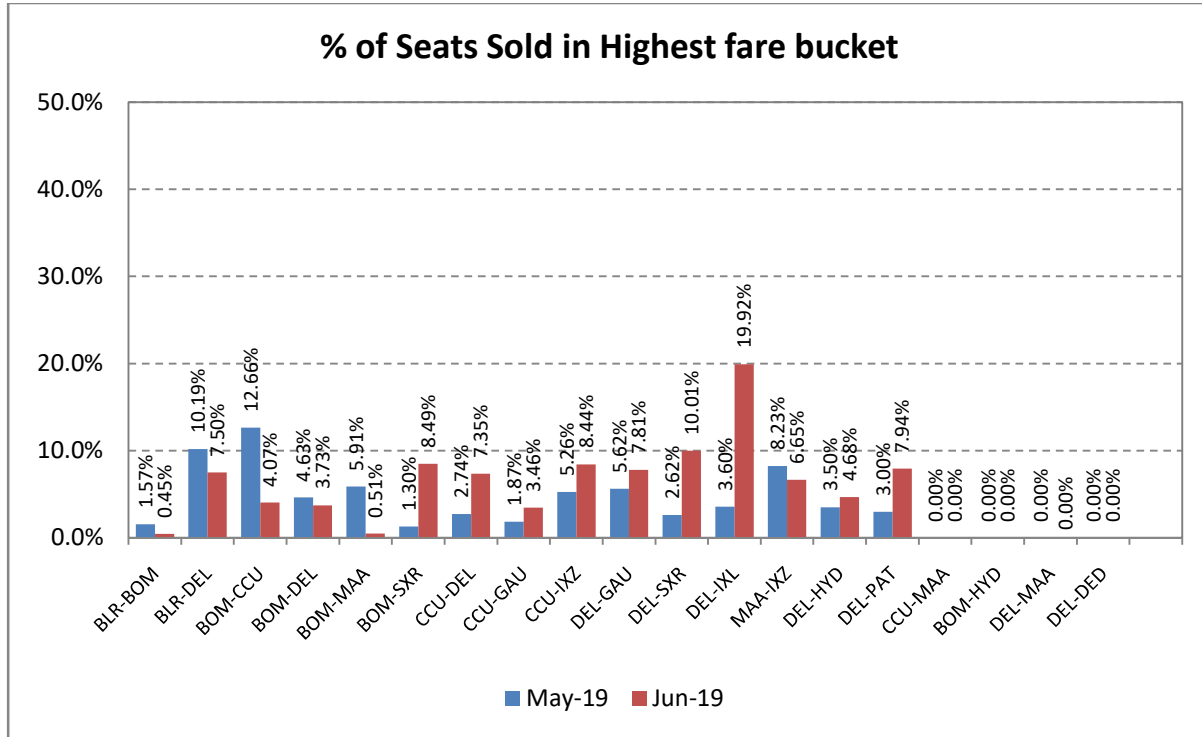
Air India



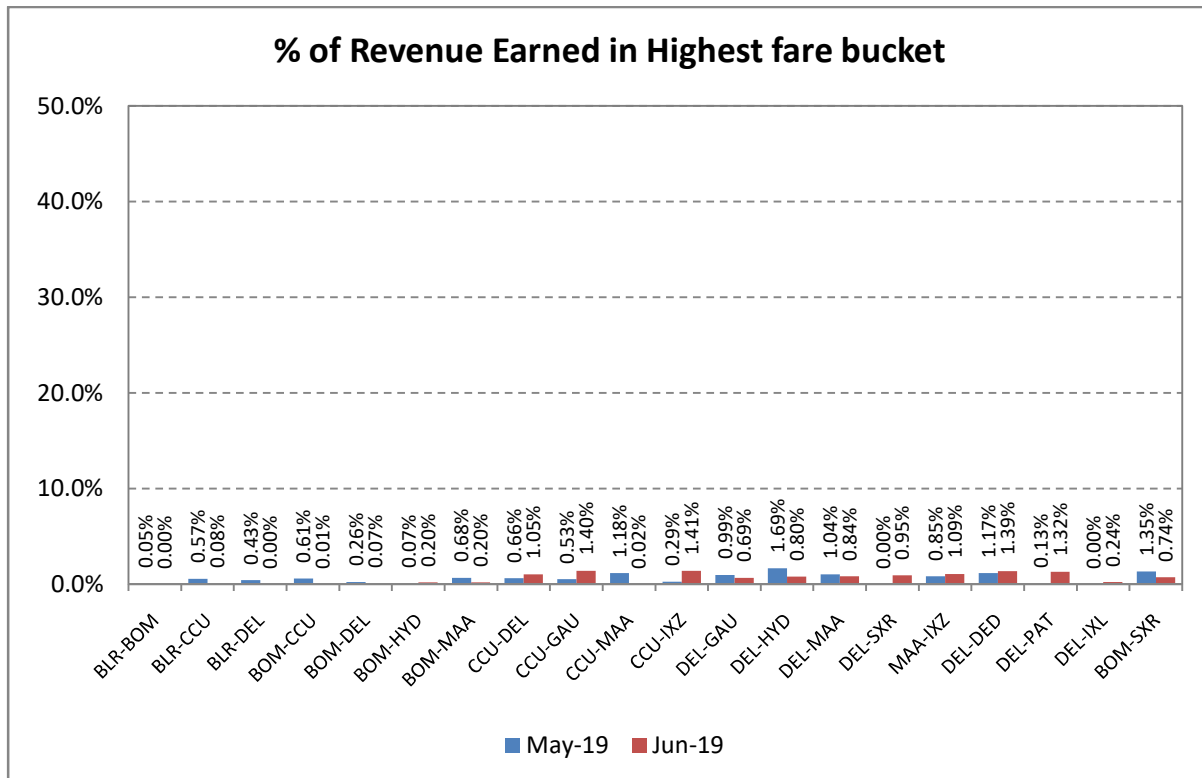
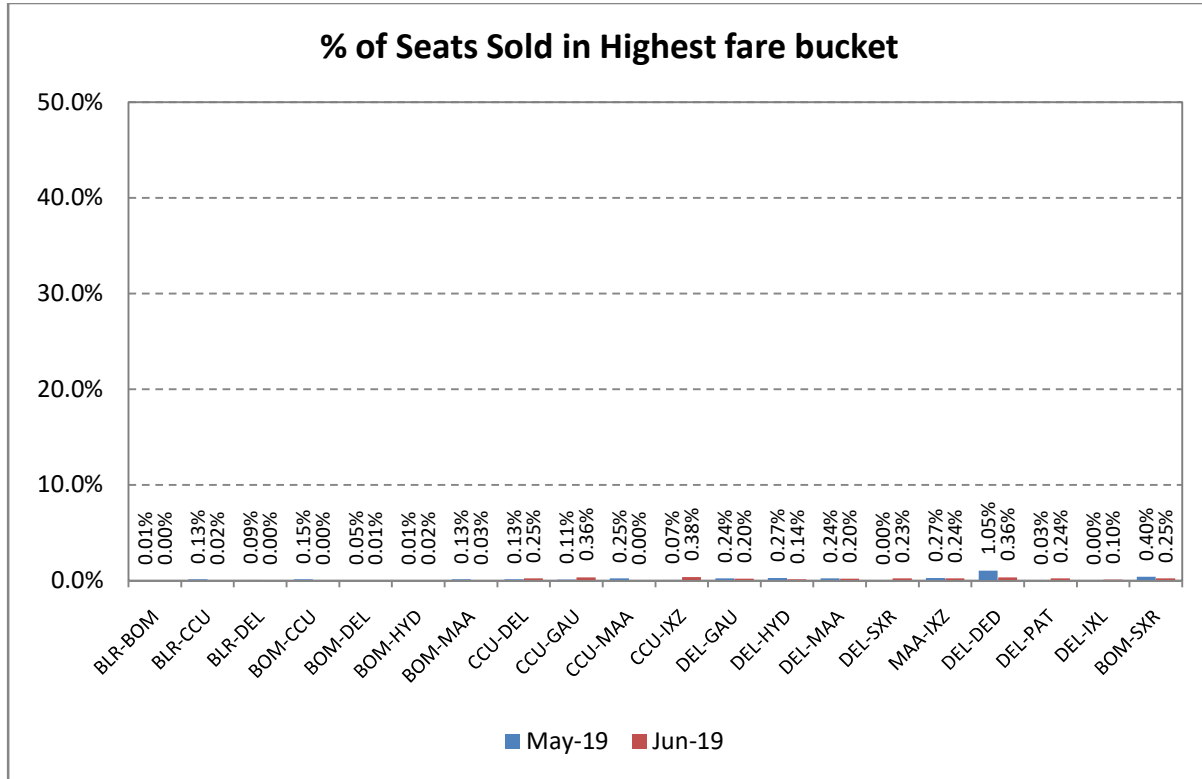
Indigo



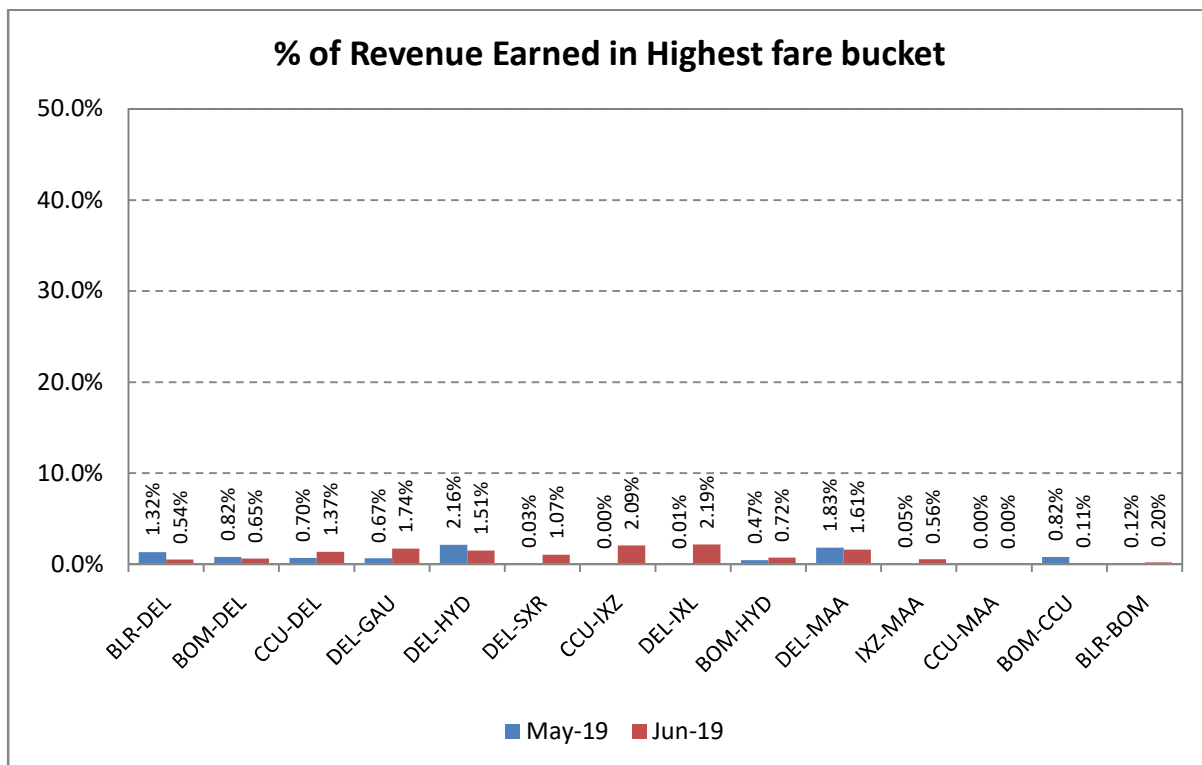
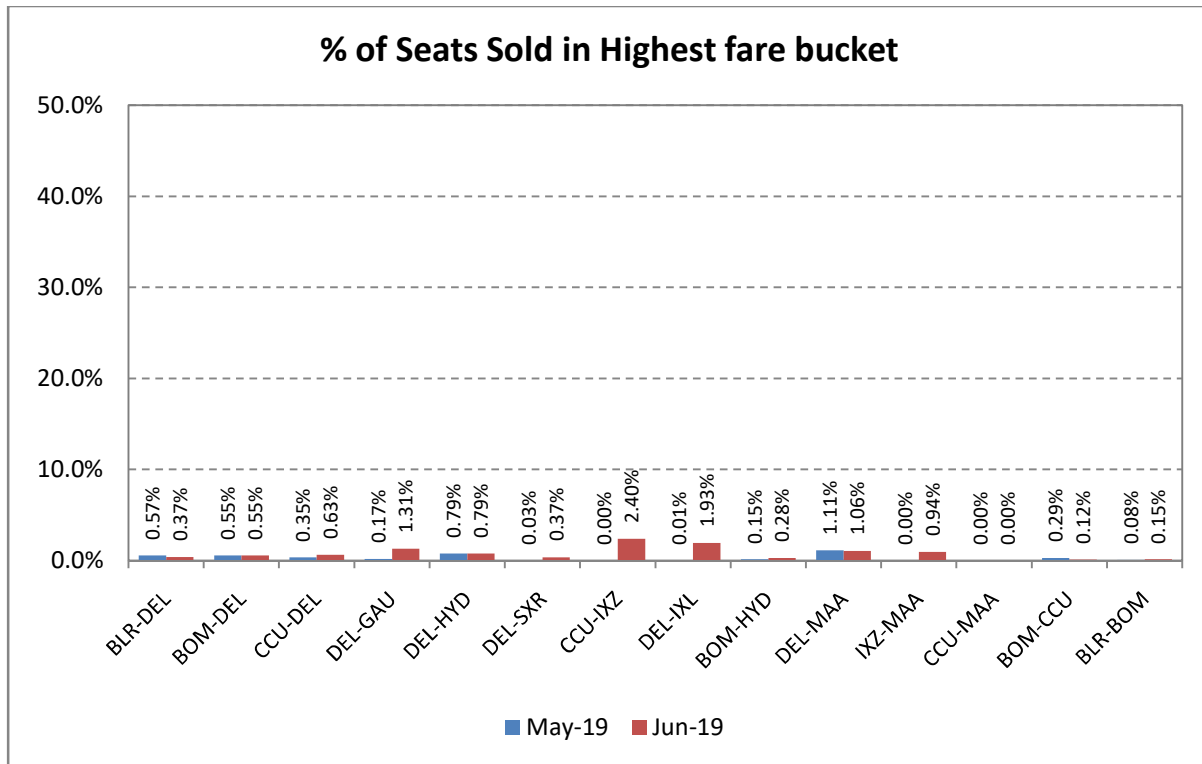
Go Air



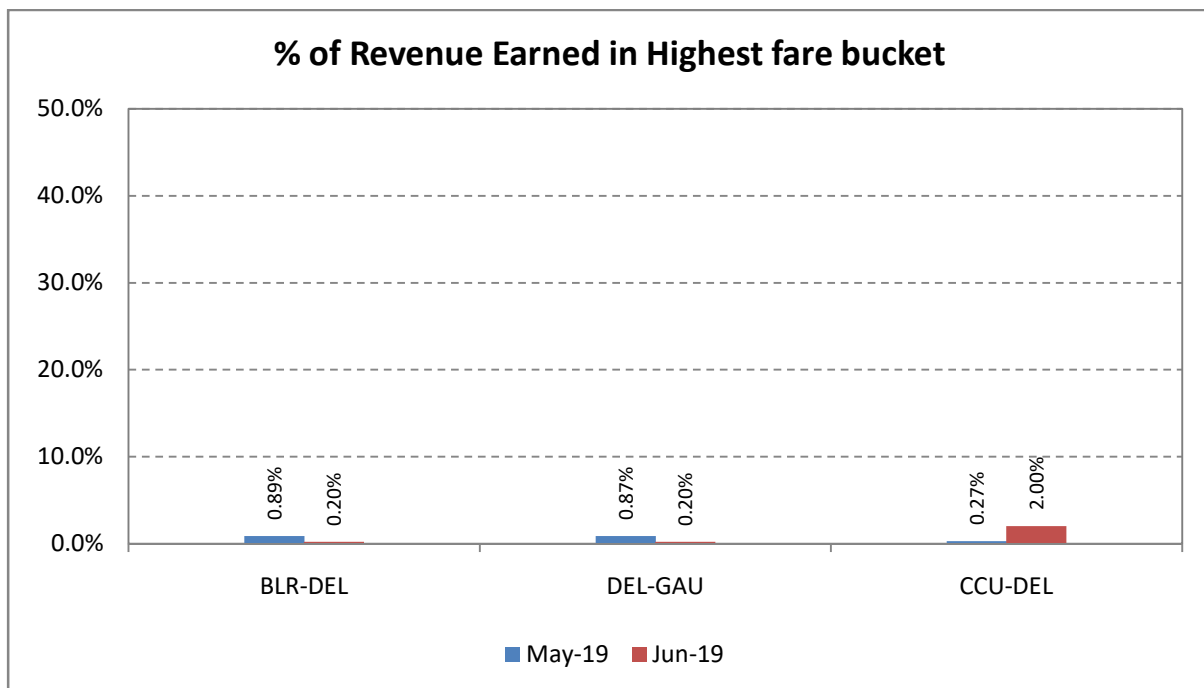
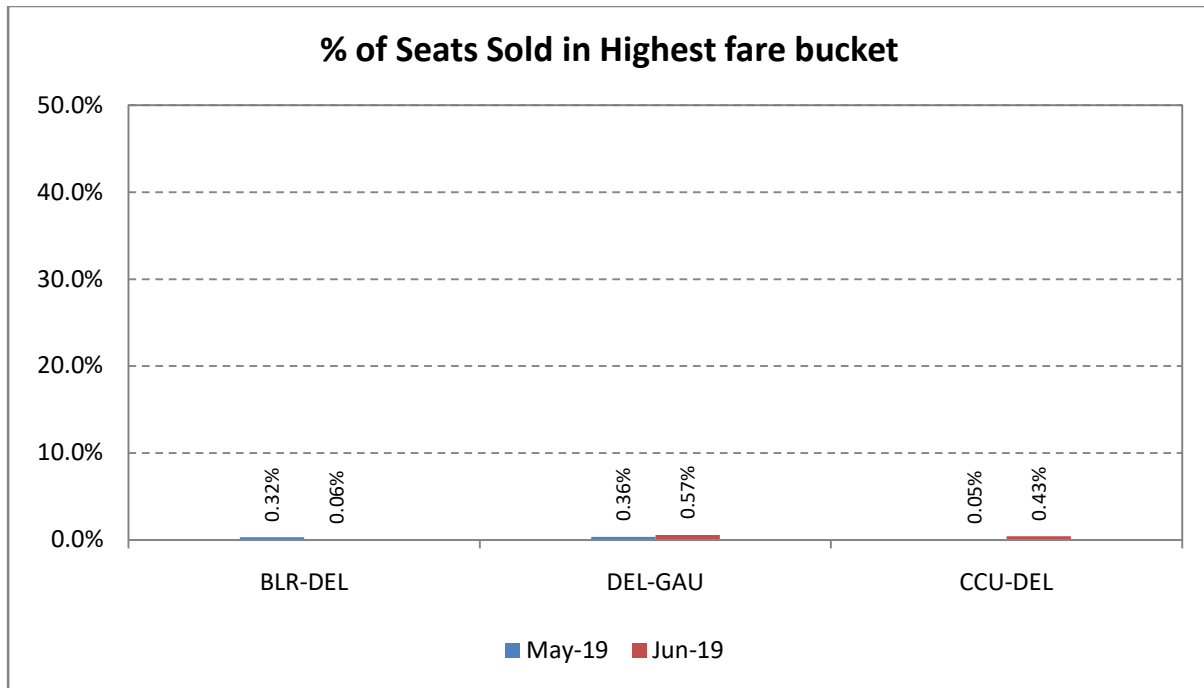
Spicejet



Vistara



Air Asia



Compliance of CAR Section 3, Series M, Part IV

In accordance with the Civil Aviation Requirement Section 3, Series M, Part IV, airline are required to submit data on number of cases of denied boarding, cancellations and delays along with the status on a monthly basis.

Airline	Denied Boarding		Cancellations		Delays Beyond 2 Hrs	
	No. of Pax Affected	Status of Facilities & Compensation	No. of Pax Affected	Status of Facilities & Compensation	No. of Pax Affected	Status of Facilities
Air India	3043	<ul style="list-style-type: none"> • Refund • Rebooked on other flights • Hotel accommodation • Compensation of Rs 129.16 lakhs 	9324	<ul style="list-style-type: none"> • Refunds • Rescheduling • Hotel accommodation • Compensation of Rs. 22.11lakhs 	52934	<ul style="list-style-type: none"> • Refreshments • Refunds where pax desired • Rescheduling • Amount spent on facilitation of Rs. 87.47 lakhs
Pawan hans	Nil	Nil	13	Compensation of Rs 0.37 lakhs	Nil	Nil
SpiceJet	613	Compensation of Rs 21.42 lakhs	5966	<ul style="list-style-type: none"> • Refreshments • Rescheduling • Compensation of Rs. 20.36 lakhs 	39795	<ul style="list-style-type: none"> • Refreshments • Transfer to other airlines • Amount spent on facilitation of Rs. 67.95 lakhs
Go Air	Nil	Nil	219	<ul style="list-style-type: none"> • Refreshments • Rescheduling 	1872	<ul style="list-style-type: none"> • All pax given refreshments • Refunds where pax desired • Rescheduling
Indigo	132	Compensation of Rs 15.51 lakhs	3123	<ul style="list-style-type: none"> • Refreshments • Rescheduling • Compensation of Rs. 0.28 lakhs 	96620	<ul style="list-style-type: none"> • Refreshments
Air Asia	6	Compensation of Rs 0.27 lakhs	28	Compensation of Rs 1.07 lakhs	5345	<ul style="list-style-type: none"> • Refreshments • Rescheduling • Amount spent on facilitation of Rs 12.99 lakhs
Vistara	40	Compensation of Rs 3.45 lakhs	1109	Compensation of Rs 8.66 lakhs	12012	<ul style="list-style-type: none"> • Refreshments • Rescheduling • Amount spent on facilitation of Rs 28.90 lakhs
TruJet	Nil	Nil	48	Compensation of Rs 1.17 lakhs	275	<ul style="list-style-type: none"> • Refreshments • Rescheduling • Amount spent on facilitation of Rs 0.08 lakhs
Star Air	Nil	Nil	111	Compensation of Rs 0.06 lakhs	39	Amount spent on facilitation of Rs 0.07 lakhs
Air Deccan	Nil	Nil	32	Compensation of Rs 0.48 lakhs	Nil	Nil

SUMMARY

Denied Boarding		Cancellations		Delays	
No. ofPax Affected	Facilities & Compensation	No. ofPax Affected	Facilities & Compensation	No. ofPax Affected	Facilities
3834	Rs. 169.81 lakhs compensation	19973	Rs 54.55 lakhs compensation and facilities	208892	Rs. 197.46 lakhs towards facilitation

Table 1**TOTAL DOMESTIC PASSENGERS CARRIED BY SCHEDULED DOMESTIC AIRLINES (IN LAKHS) - YEAR 2019**

Month & Year	Air India (Domestic)	Private Carriers	Total Domestic	Percentage Share	
				Private Carriers	Air India
Jan	15.30	109.78	125.08	87.8	12.2
Feb	14.53	98.96	113.49	87.2	12.8
Mar	15.19	100.77	115.96	86.9	13.1
Ist Quarter	45.01	309.51	354.53	87.3	12.7
Apr	15.23	94.71	109.95	86.1	13.9
May	16.32	105.54	121.87	86.6	13.4
Jun	15.51	104.74	120.25	87.1	12.9
IIInd Quarter	47.27	305.00	352.27	86.6	13.4
Jul					
Aug					
Sep					
IIIrd Quarter					
Oct					
Nov					
Dec					
IVth Quarter					
Total	92.29	614.51	706.80	86.9	13.1

Data of 2018	Air India (Domestic)	Private Carriers	Total Domestic	Percentage Share	
				Private Carriers	Air India
I st Qtr	45.06	292.84	337.90	86.7	13.3
II nd Qtr	44.60	302.34	346.94	87.1	12.9
III rd Qtr					
IV th Qtr					
Total	89.66	595.18	684.83	86.9	13.1
Growth (%) =	2.93	3.25	3.21		

Table 2

MONTH-WISE SEAT FACTOR OF SCHEDULED OPERATORS IN 2019
(PASSENGER LOAD FACTOR IN PERCENTAGE)

Month	Air India (Dom)	Jet Airways	Jet Lite	Spice Jet	Go Air	IndiGo	Air Asia	Vistara	Trujet	Star Air	Pawan Hans	Air Deccan
Jan	80.0	86.1	84.2	90.9	87.4	86.4	88.4	84.2	78.0	53.1	0.0	0.0
Feb	83.3	89.4	87.9	94.0	92.6	88.4	91.8	89.1	75.9	52.1	0.0	0.0
Mar	80.8	86.7	87.5	93.0	91.4	86.0	87.5	86.8	73.2	53.8	0.0	0.0
Apr	81.2	76.3	79.1	93.7	90.8	87.8	84.4	84.6	72.6	53.5	0.0	0.0
May	85.0	0.0	0.0	93.9	93.3	90.9	87.8	85.6	75.9	61.0	21.9	18.7
Jun	81.2	0.0	0.0	93.7	94.0	90.1	90.7	83.3	77.6	55.8	27.0	29.3
Jul												
Aug												
Sep												
Oct												
Nov												
Dec												

Table 3

MARKET SHARE OF SCHEDULES DOMESTIC AIRLINES (YEAR 2019)

Month & Year		Passengers Carried (in Lakhs)/Market Share (%)											
		Air India	Private Air Carriers										
			Jet Airways	Jet Lite	Spice Jet	Go Air	IndiGo	Air Asia	Vistara	Pawan Hans	Turbo Megha	Star Air	Air Deccan
Jan	Pax Carried	15.30	14.91	2.15	16.66	10.88	53.22	6.67	4.70	-	0.58	0.01	0.00
	Market Share	12.2	11.9	1.7	13.3	8.7	42.5	5.3	3.8	-	0.5	0.0	0.0
Feb	Pax Carried	14.53	11.33	1.59	15.58	10.27	49.31	5.83	4.52	-	0.51	0.03	0.00
	Market Share	12.8	10.0	1.4	13.7	9.0	43.4	5.1	4.0	-	0.5	0.0	0.0
Mar	Pax Carried	15.19	5.37	1.34	15.81	11.49	54.41	6.87	4.90	-	0.54	0.04	0.00
	Market Share	13.1	4.6	1.2	13.6	9.9	46.9	5.9	4.2	-	0.5	0.0	0.0
IstQtr	Pax Carried	45.01	31.61	5.08	48.05	32.63	156.93	19.37	14.13	0.00	1.63	0.07	0.01
	Market Share	12.7	8.9	1.4	13.6	9.2	44.3	5.5	4.0	0.0	0.5	0.0	0.0
Apr	Pax Carried	15.23	0.86	0.17	14.41	11.90	54.81	6.78	5.17	-	0.57	0.04	0.00
	Market Share	13.9	0.8	0.2	13.1	10.8	49.9	6.2	4.7	-	0.5	0.0	0.0
May	Pax Carried	16.32	0.00	0.00	18.03	13.55	59.80	7.68	5.79	0.00	0.64	0.06	0.00
	Market Share	13.4	0.0	0.0	14.8	11.1	49.0	6.3	4.7	0.0	0.5	0.0	0.0
Jun	Pax Carried	15.51	0.00	0.00	18.76	13.30	57.78	7.72	6.48	0.00	0.64	0.05	0.01
	Market Share	12.9	0.0	0.0	15.6	11.1	48.1	6.4	5.4	0.0	0.5	0.0	0.0
IIIndQtr	Pax Carried	47.07	0.86	0.17	51.19	38.76	172.39	22.18	17.43	0.01	1.85	0.15	0.01
	Market Share	13.4	0.2	0.0	14.5	11.0	49.0	6.3	5.0	0.0	0.5	0.0	0.0
Jul	Pax Carried												
	Market Share												
Aug	Pax Carried												
	Market Share												
Sep	Pax Carried												
	Market Share												
IIIrdQtr	Pax Carried												
	Market Share												
Oct	Pax Carried												
	Market Share												
Nov	Pax Carried												
	Market Share												
Dec	Pax Carried												
	Market Share												
IVthQtr	Pax Carried												
	Market Share												
TOTAL	Pax Carried	92.08	32.47	5.25	99.24	71.39	329.32	41.55	31.56	0.01	3.49	0.22	0.01
	Market Share	13.0	4.6	0.7	14.0	10.1	46.6	5.9	4.5	0.0	0.5	0.0	0.0

Table 4

Airline	Complaints		Redressal Status	
	Total	Per 10,000 Passengers Carried	Closed	Open
Air Asia	10	0.1	10	0
Vistara	10	0.2	10	0
Go Air	60	0.5	60	0
IndiGo	275	0.5	275	0
Spicejet	114	0.6	114	0
Pawan Hans	0	0.0	0	0
Air India (dom)	278	1.8	154	124
Trujet	3	0.5	3	0
Air Deccan	0	0.0	0	0
Star Air	0	0.0	0	0
Total	750	0.62	626	124