

B.C.S. GOVT. P.G. COLLEGE DHAMTARI

7.1.8 Describe the Institutional efforts/initiatives in providing an inclusive environment i.e., tolerance and harmony towards cultural, regional, linguistic, communal socioeconomic and other diversities.

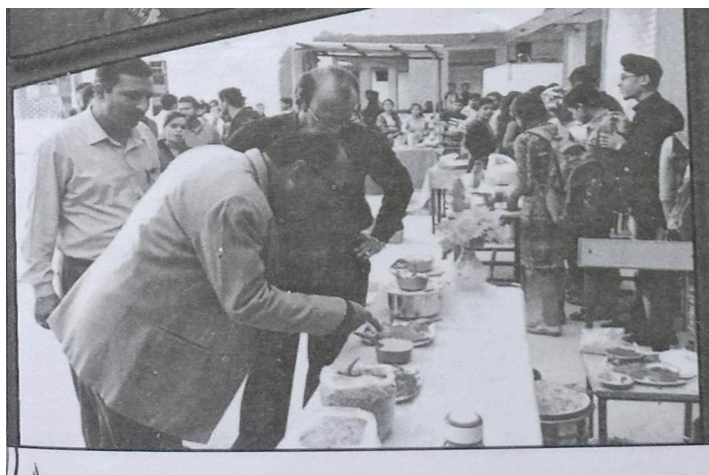
1. Programme for Tolerance and Harmony HOLI-MILAN CELEBRATION



2. Regional Dance of Chhattisgarh (सुआ नृत्य)



3. Communal socio-economic



4. Other Diversities (रस्सा खींच प्रतियोगिता)

