

Feedback 2017-18

B.C.S.Govt.P.G.College, Dhamtari

The main objective of the Feedback Committee was to create a unique and useful "feedback system" with exceptional quality and services that differentiates it from other systems.

The feedback forms are filed at the mid of the year of each academic session. The questionnaire is designed to measure candidate's perception about the teacher, academic coursework, Review of Curriculum, teaching experience and overall college functioning.

Feedback form from Parents is collected in the same way. Only the students and parents can fill the forms. The regular students are considered to give feedback. Users are broadly classified into 3 categories:

1. Students
2. Parents
3. Teachers

Feedback analysis of individual teacher as well as overall functioning of the college is submitted to the Principal of the college for the corrective action. He studies the report along with IQAC members and principal of the college. Honorable Principal has appreciated the efforts taken by Feedback committee and it was recommended to explain the mechanism of the feedback with the staff members and its importance in the quality enhancement, sustenance and improvement in teaching and learning process. They were also suggested to improve the teaching learning process in the area where they are lagging behind. All the teachers were happy with the feedback mechanism which is benefiting them for the improvement in their academic excellence and academic engagement in the college. The feedbacks are collected from all stakeholders by the IQAC through feedback committee for analysis. After analysis of feedback an inclusive reports are prepared and communicated to the concerned teaching staff and heads of departments for their improvement. Feedback committee suggests improvement in the infrastructure and basic facilities after analyzing the feedback from the students.

S.No	Feedback Type	Objective	Frequency (in Year)
1	Student's Feedback on college	College Facility	Once
2	Student's Feedback	Design and Review of Curriculum	Once
3	Student's Feedback on Teacher	Quality Teaching of the Teacher	Once
4	Parent's Feedback	Design and Review of Curriculum	Once

6	Parent's Feedback	Teaching- Learning and Facilities of College	Once
	Teacher's Feedback	Design and Review of Curriculum	Once

Report of Analysis of Feedback 2017-18

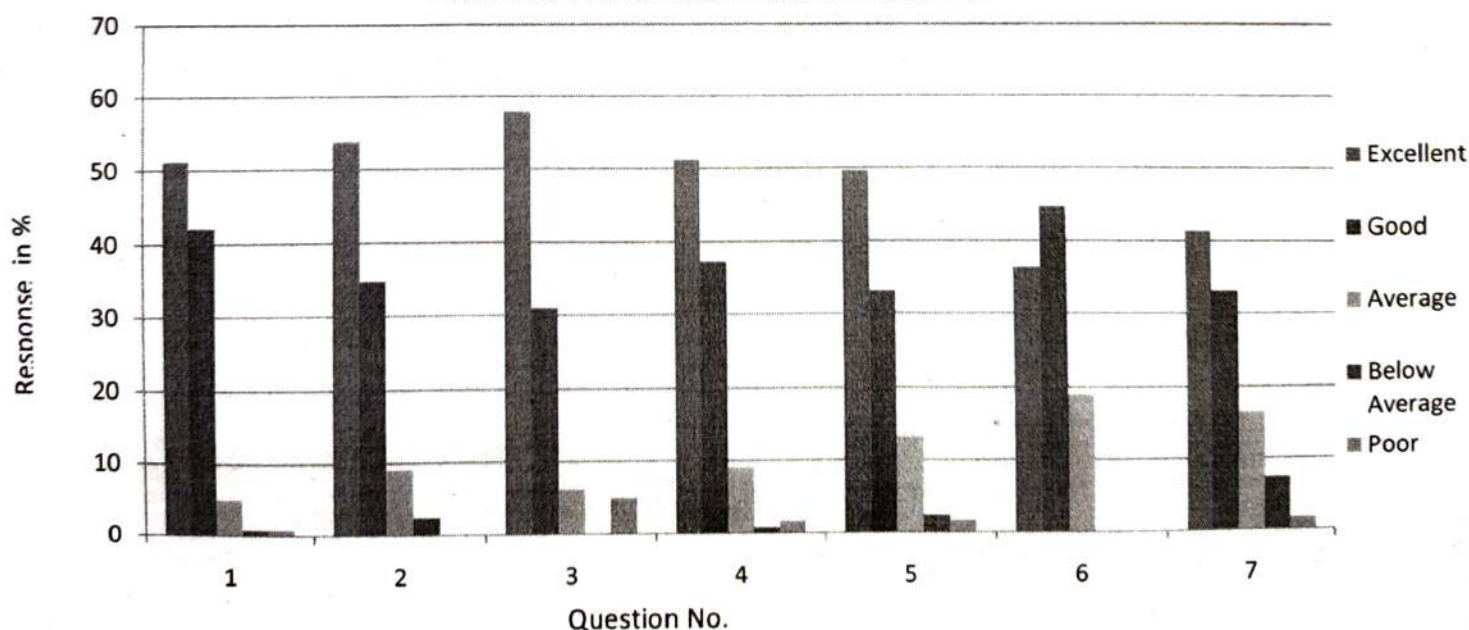
Student's Feedback regarding Curriculum-

The students are the most important stakeholder of Higher education system. The interest of participation of students at all levels both internal quality assurance and external quality assurance have played a central role.

We have collected feedback from our post graduate students. We have received (total 132 students) feedback on the syllabus of the various programmes designed by Pt.Ravishankar University Raipur and analyzed as follows-

Qu.no	Curriculum Evaluation Point	Response in%				
		Excellent	Good	Average	Below Average	Poor
1	Intensity of course material	51.24	42.15	4.95	0.83	0.83
2	Job oriented course	53.72	34.71	9.09	2.48	0
3	Course related to competitive exam	57.86	30.97	6.21	0	4.96
4	Learnable value and ideological value	51.24	37.19	9.09	0.83	1.65
5	Completion of course during academic session	49.59	33.06	13.22	2.48	1.65
6	Resource oriented course	36.36	44.63	19.01	0	0
7	Relevant and clarity of the course	41.32	33.06	15.53	7.44	1.65

Student Feedback Analysis 2017-18



Opinion about the syllabus:

Excellent	Good	Average	Below Average	Poor
48.76 %	36.54 %	11.16 %	2.01 %	1.53 %

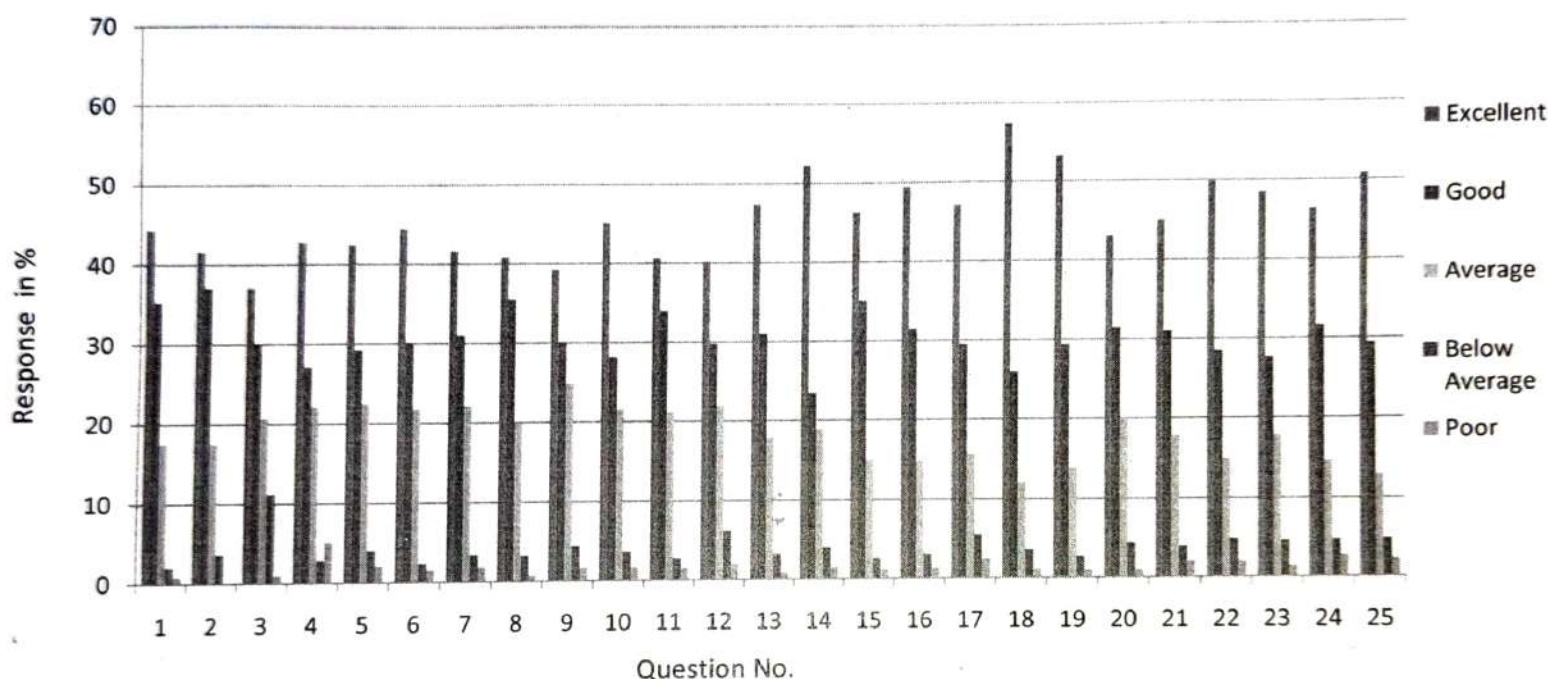
Student Feedback for College Facilities-

We have collected feedback from our post graduate students and Under graduate students. We have received total 957 student's feedback on college facility and analyzed as follows-

Qu. no	Evaluation Point	Response in%				
		Excellent	Good	Average	Below Average	Poor
1	Discipline in the college	44.31	35.32	17.55	1.98	0.84
2	Drinking water facility in college	41.7	37.1	17.55	3.55	0.1
3	Toilet facility	37.09	30.11	20.69	11.17	0.94
4	Library	42.84	27.07	22.15	2.82	5.12
5	Canteen	42.42	29.17	22.46	3.97	1.98
6	Parking Facility	44.41	30.11	21.73	2.29	1.46
7	Games and Sports	41.69	31.03	22.17	3.34	1.77
8	Cultural Activity	40.85	35.52	19.87	3.13	0.63
9	Seating Arrangement in class	39.29	29.98	24.79	4.38	1.56
10	Light /Fan	45.14	28.21	21.54	3.55	1.56
11	Facility of new technology	40.65	33.96	21.21	2.72	1.46
12	Fee counter facility	40.24	29.78	21.94	6.16	1.88
13	NCC/NSS/Youth Red Cross	47.35	31.03	17.76	3.13	0.73
14	Girls Common Room	52.25	23.51	18.91	3.97	1.36
15	Cleanliness in college Campus	46.29	35.11	15.05	2.51	1.04
16	Departmental Activities	49.43	31.45	14.84	3.03	1.25
17	Educational Tour (Essay ,discussion , debates ,etc)	47.14	29.46	15.57	5.43	2.4
18	Ragging free Environment	57.38	26.01	12.02	3.55	1.04

	Sexual discrimination free environment	53.29	29.37	13.79	2.61	0.94
	Pollution free campus	43.02	31.45	20.21	4.38	0.94
21	Participation in social works (blood donation, PSC Coaching, etc)	45.05	31.03	17.87	3.97	2.08
22	Participation in public awareness rally/works	49.82	28.44	14.94	4.81	1.99
23	Behavior of college staff with student	48.49	27.69	17.87	4.59	1.36
24	Availability of Complaint Box	46.39	31.67	14.63	4.7	2.61
25	Availability of Suggestion Box	50.78	29.36	12.86	4.81	2.19

Student Feedback Analysis 2017-18



Opinion about the College Facility :

Excellent	Good	Average	Below Average	Poor
45.51 %	30.53 %	18.37 %	4.02 %	1.57 %

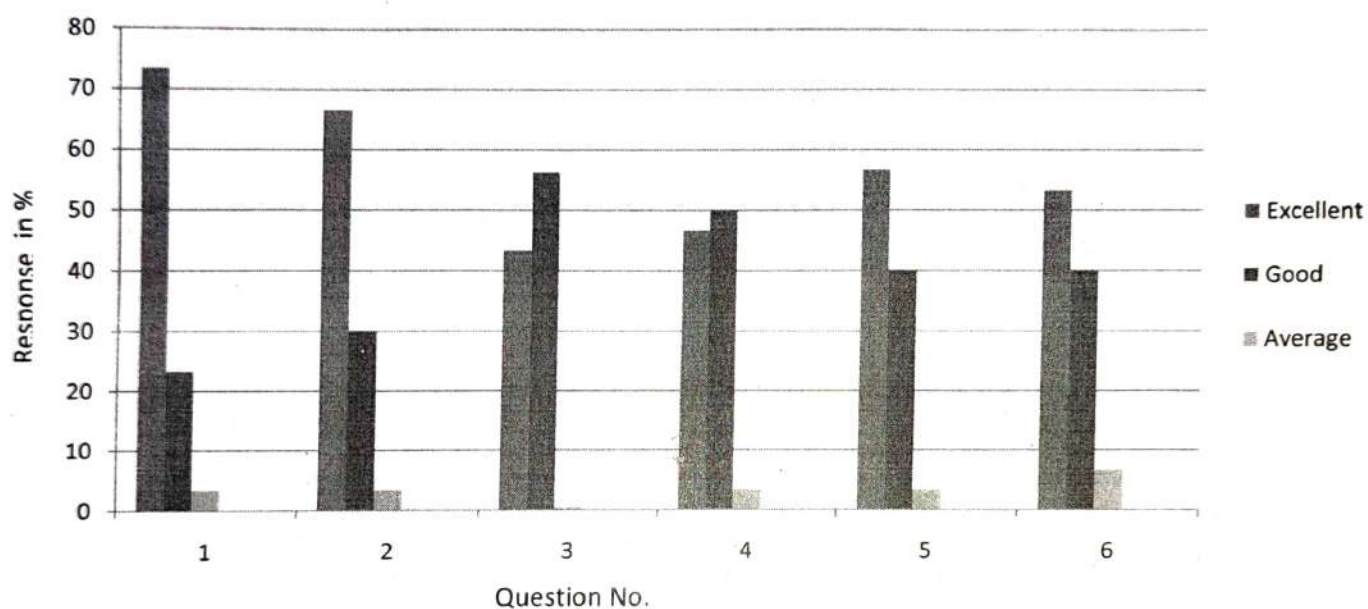
Teachers feedback for Curriculum-

The college is affiliated to Pt. Ravishankar University , Raipur (C.G.) and follows the prescribed curriculum. We have collected feedback on curriculum from respective subject teachers regarding suggestion on improvement of the syllabus of PG Courses. We have received 59 teacher's feedback on the curriculum and analyzed as follows-

Qu.no	Curriculum Evaluation Point	Response in%
-------	-----------------------------	--------------

		Excellent	Good	Average	Below Average	Poor
1	Availability of reference books and text books	73.33	23.33	3.34	0	0
2	Quality and utility of the course	66.67	30	3.33	0	0
3	Assessment of the student by the course	43.38	56.28	0.34	0	0
4	Job oriented course	46.67	50	3.33	0	0
5	Intensity if the course material	56.67	40	3.33	0	0
6	Inclusion of innovative technology in the course	53.33	40	6.67	0	0

Teachers Feedback Analysis 2017-18



Opinion about the Syllabus by the Teachers :

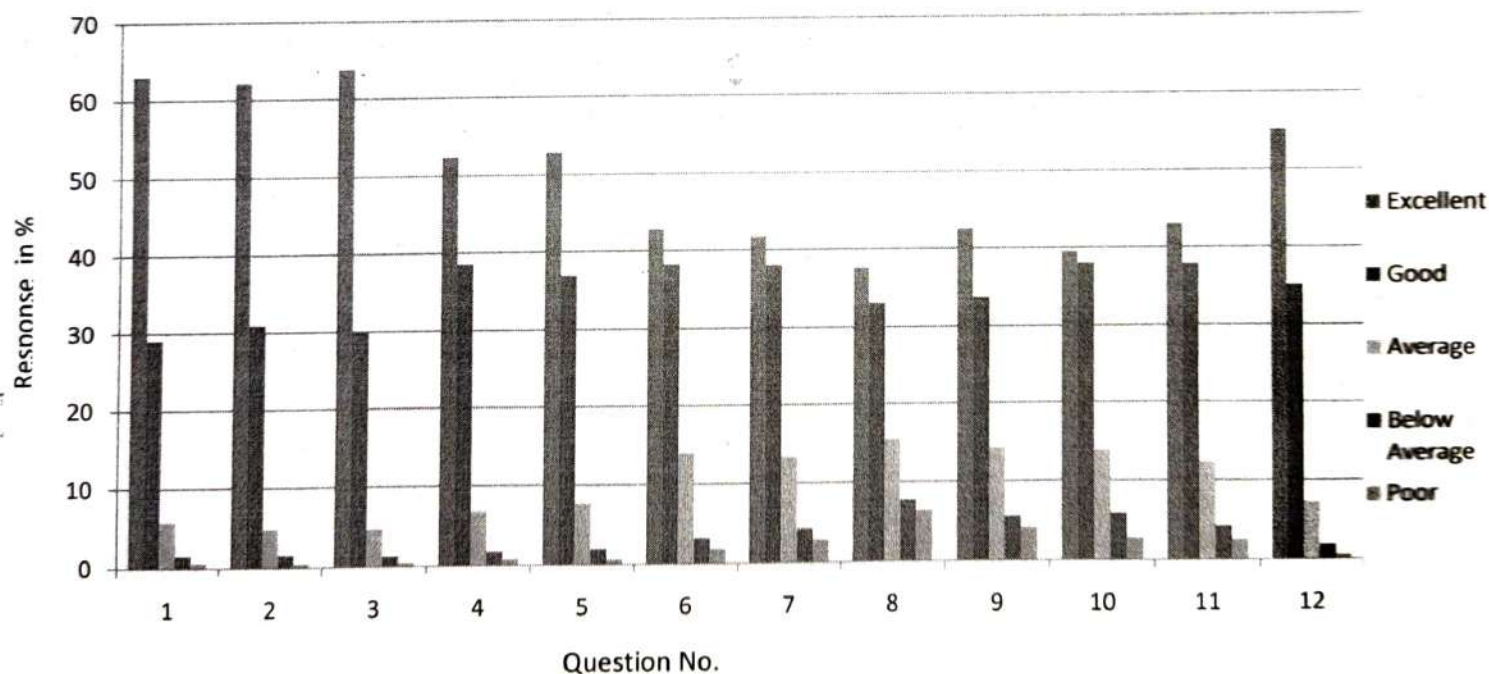
Excellent	Good	Average	Below Average	Poor
56.68 %	39.93 %	3.39 %	0	0

Student Feedback for Teachers –

The feedback from the students is collected on the subject teacher of the various subjects and analyzed . We have received total 5277 students feedback.

Qu. no	Evaluation Point	Response in%				
		Excellent	Good	Average	Below Average	Poor

	Punctuality of Teacher	63.01	29.05	5.72	1.59	0.63
	Regularity of teacher	62.16	30.97	4.83	1.57	0.47
3	Subject knowledge	63.81	29.9	4.62	1.25	0.42
4	Expression of the subject and style	52.36	38.51	6.71	1.74	0.68
5	Capability of maintaining discipline in the class	52.88	36.95	7.63	1.95	0.59
6	Facilitating the students with book ,notes, etc.	42.83	38.26	13.91	3.16	1.84
7	Referring secondary resources like Reference Book, Journals, website	41.71	38.02	13.21	4.24	2.82
8	Use of new technologies (Projector, Laptop, etc)	37.59	33.07	15.43	7.66	6.25
9	Use of class test ,Presentation, Seminar, etc.)	42.51	33.74	14.21	5.5	4.04
10	Employment related suggestion and guidance	39.49	38.04	13.87	5.85	2.75
11	To suggest students regarding various problems of life	43.09	37.86	12.32	4.19	2.54
12	Behaviors with student and emotional attachment	55.15	35.09	7.26	1.86	0.64



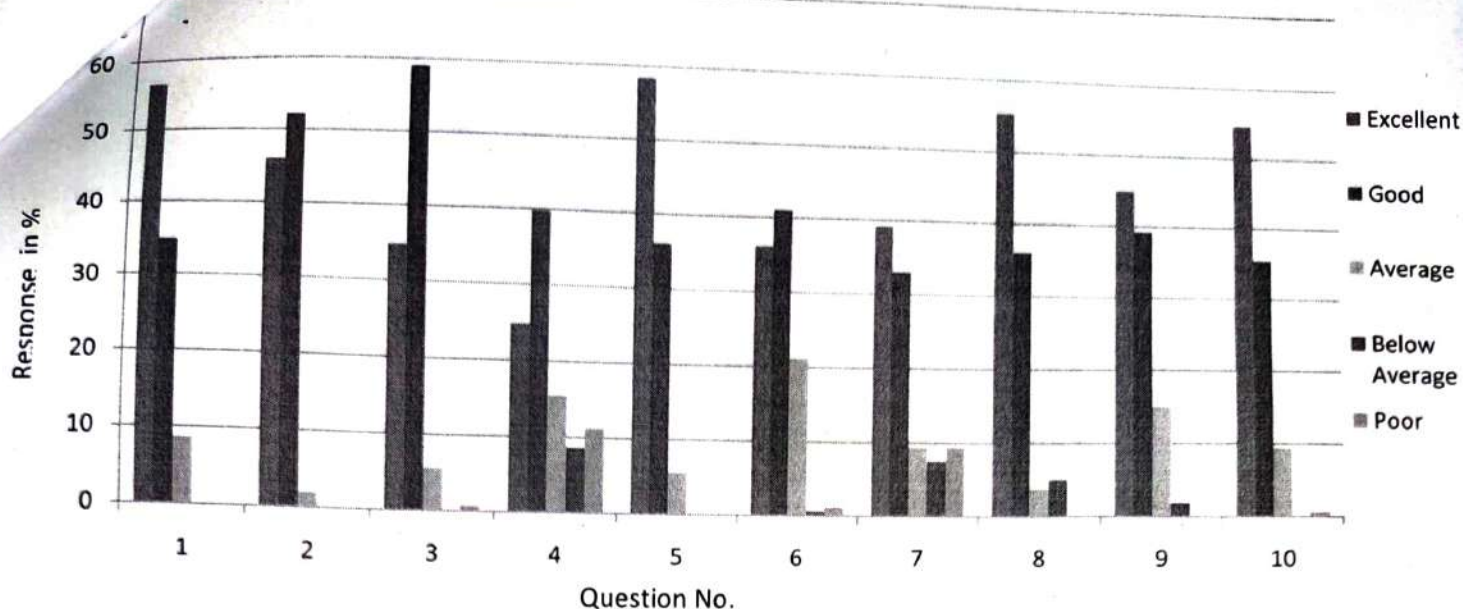
Opinion about the Teachers by the Student's :

Excellent	Good	Average	Below Average	Poor
49.72 %	34.92 %	10 %	3.38%	1.975%

Parent's Feedback For Teaching-Learning And College Facilities -

The feedback from the parent collected on the teaching-learning and college facilities and analyzed .We have received total 161 parents feedback.

Qu. no	Evaluation Point	Response in %				
		Excellent	Good	Average	Below Average	Poor
1	Are there sufficient and competent teacher's in your college to teach your ward?	56.52	34.78	8.69	0	0
2	Are you satisfied with teaching of teachers in the college?	45.96	52.17	1.86	0	0
3	Are you satisfied with study of your ward?	34.78	59.01	5.59	0	0.62
4	Do the teachers use modern technology?	24.84	39.75	15.53	8.69	11.18
5	Is behavior of teachers ,office staff etc. of college positive towards students?	58.38	36.02	5.59	0	0
6	Is positive change/effect of the college reflected in your ward?	36.02	40.99	21.11	0.62	1.24
7	Are you satisfied with Library facility?	39.19	32.92	9.32	7.45	9.32
8	Are you satisfied with the amenities such as drinking water, parking, etc in the college?	55.28	36.02	3.73	4.97	0
9	Are you satisfied with cultural activities arranged for the students in the college?	44.90	39.13	14.91	1.86	0
10	Will you advise other students to study in this college?	54.66	35.40	9.32	0	0.62



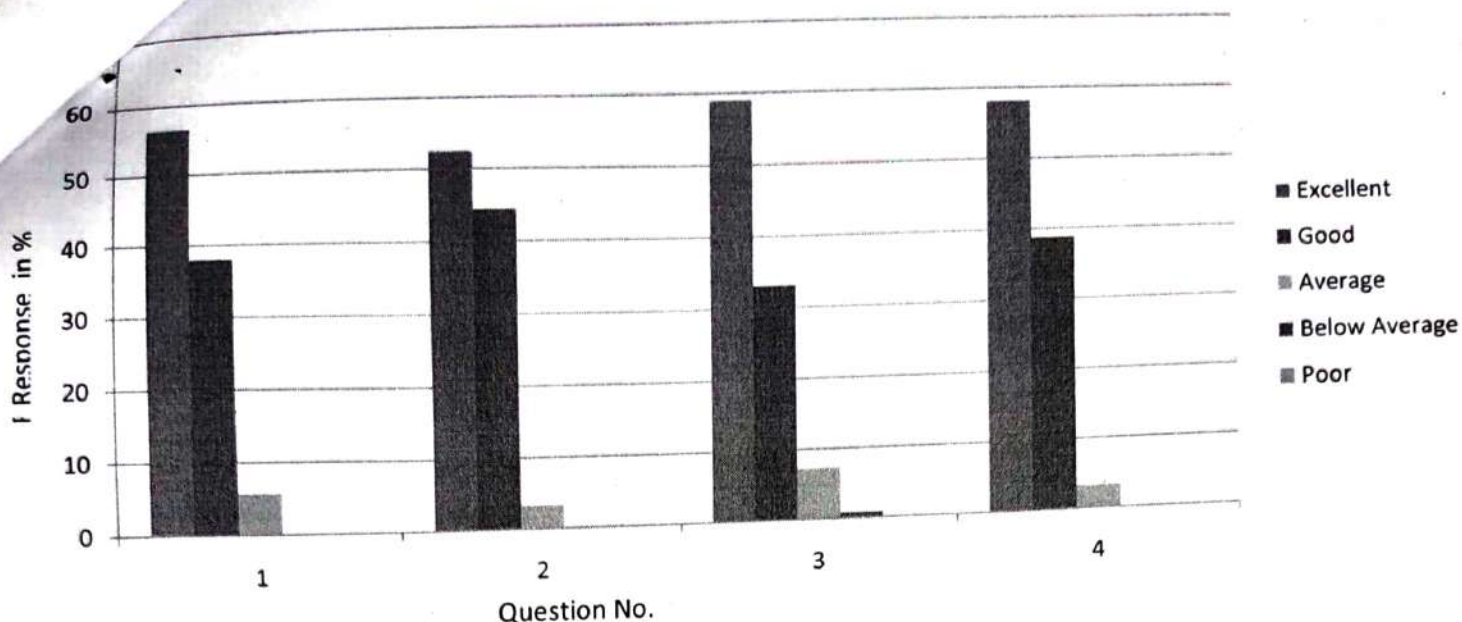
Opinion about the Teaching-Learning And College Facilities by the Parents :

Excellent	Good	Average	Below Average	Poor
45.053%	40.6%	9.656%	2.359%	2.3%

Parent's Feedback for Syllabus by the Parents :

The feedback from the parent collected on the syllabus of the various programmes .We have received total 124 parents feedback on the syllabus of the various programmes designed and analyzed as follows-

Qu. no	Curriculum Evaluation Point	Response in%				
		Excellent	Good	Average	Below Average	Poor
1	Job oriented course	56.45	37.9	5.64	0	0
2	Development of mental ability by the course	52.41	44.35	3.22	0	0
3	Relevant course in solving local problems	58.87	33.06	7.25	0.8	0
4	Fulfillment of expectation by the course	58.06	38.7	3.22	0	0



Opinion about the Syllabus by the Parents :

Excellent	Good	Average	Below Average	Poor
56.45%	38.5%	4.83%	0.2%	0

In-charge Feedback Committee

Dr. Chandrika Sahu

Principal
Govt. P.G. College
Dhamtari
B.C.S. Govt. P.G. College, Dhamtari

Feedback 2018-19

B.C.S.Govt.P.G.College, Dhamtari(C.G.)

The college aims to offer the best possible environment and learning experience to encourage students to perform to potential for academic achievement. Students, teachers and parents play an important role in the evaluation, development and enhancement of the quality of this learning experience.

Feedback from students, teachers and parents helps the college to evaluate how its service policies and changes as per stakeholders requirements. The Feedback Process has put an emphasis on the need for involvement of students in the quality assurance of higher education. Student involvement requires that students should act as collaborators, rather than merely passive receivers of teaching and learning process.

This college was established with the mission to provide guidance, identifying talent, and enhancing potential, encouraging students to follow their dreams and helping them become successful professionals.

Through Student feedback, the College continues to review, develop and implement policies and practices in key areas-

1. curriculum, governance, supervision and monitoring;
2. the creation of an academic culture in which all students and staff are expected to deploy higher-order thinking skills;
3. reinforcing clear expectations concerning unit content, assessments and outcomes;
4. feedback focused on improving teaching and enhancing lecturers professional knowledge.

Parents have entrusted the future of their children in our hands and thus they play a very important role in the development and enhancement of the quality of this learning experience.

Feedback from parents allows the college to evaluate its service provision and thus cater to providing excellent service towards the students. The feedback analysis process has put an increasing emphasis on the need for involvement of parents in the quality assurance of excellent education. Parent's involvement requires that they play an active role in participating for the holistic development of their children.

Parent's feedback has three main objectives:

1. To provide parents the opportunity to comment on the quality of their ward's learning experience, as required in preparation for and as part of review process.
2. To assess the success of academic provision in relation to the expectations of both the parents and the students.
3. To provide feedback to the faculties in order to improve delivery and/or content of the curriculum.

Every year at the mid session, feedback forms are distributed to the parents of postgraduate students. This circulation, distribution of feedback forms and collection of filled feedback forms was done by the IQAC department. The feedbacks are collected from all stakeholders by the IQAC through feedback committee and analyze them. After analysis of feedback an inclusive reports are prepared and communicated to the concerned teaching staff and head of department for their improvement. Feedback committee suggest improvement in the infrastructure and basic facilities after analyzing the feedback from the students regards the same.

S.No	Feedback Type	Objective	Frequency (in Year)
1	Students Feedback on college	Facilities in the campus	Once
2	Students Feedback	Design and Review of Curriculum	Once
3	Student Feedback on Teacher	Teaching of the Teacher	Once
4	Parents Feedback	Design and Review of Curriculum	Once
5	Teachers Feedback	Design and Review of Curriculum	Once
6	Parent's Feedback	Teaching- Learning and Facilities of College	Once

Report of Analysis of Feedback

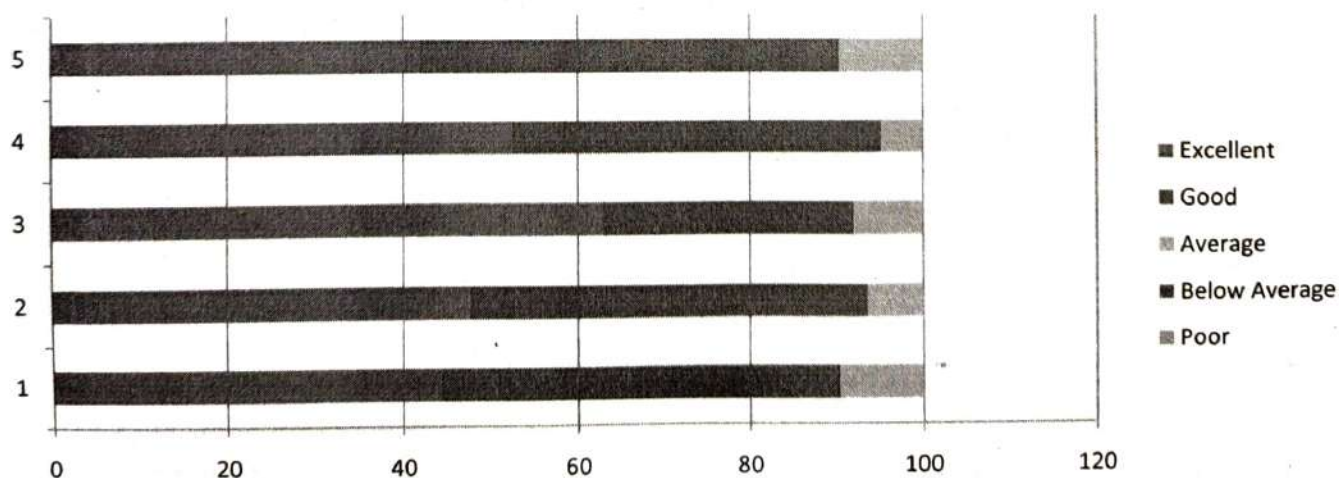
Session-2018-19

Student's Feedback regarding Curriculum-

The students are the most important stakeholder of Higher education system. The interest of participation of students at all levels both internal quality assurance and external quality assurance have played a central role.

We have collected feedback from our post graduate students. We have received (total 124 students) feedback on the syllabus of the various programmes designed by Pt.Ravishankar University Raipur and analyzed as follows-

Qu.no	Curriculum Evaluation Point	Response in%				
		Excellent	Good	Average	Below Average	Poor
1	Intensity of course material	44.35	45.97	9.68	0	0
2	Course related to competitive exam	47.58	45.97	6.45	0	0
3	Involvement of teacher and student in teaching and learning	62.9	29.04	8.06	0	0
4	Completion of course during academic session	52.42	42.74	4.84	0	0
5	Resource oriented course	41.94	48.38	9.68	0	0



Opinion about the syllabus:

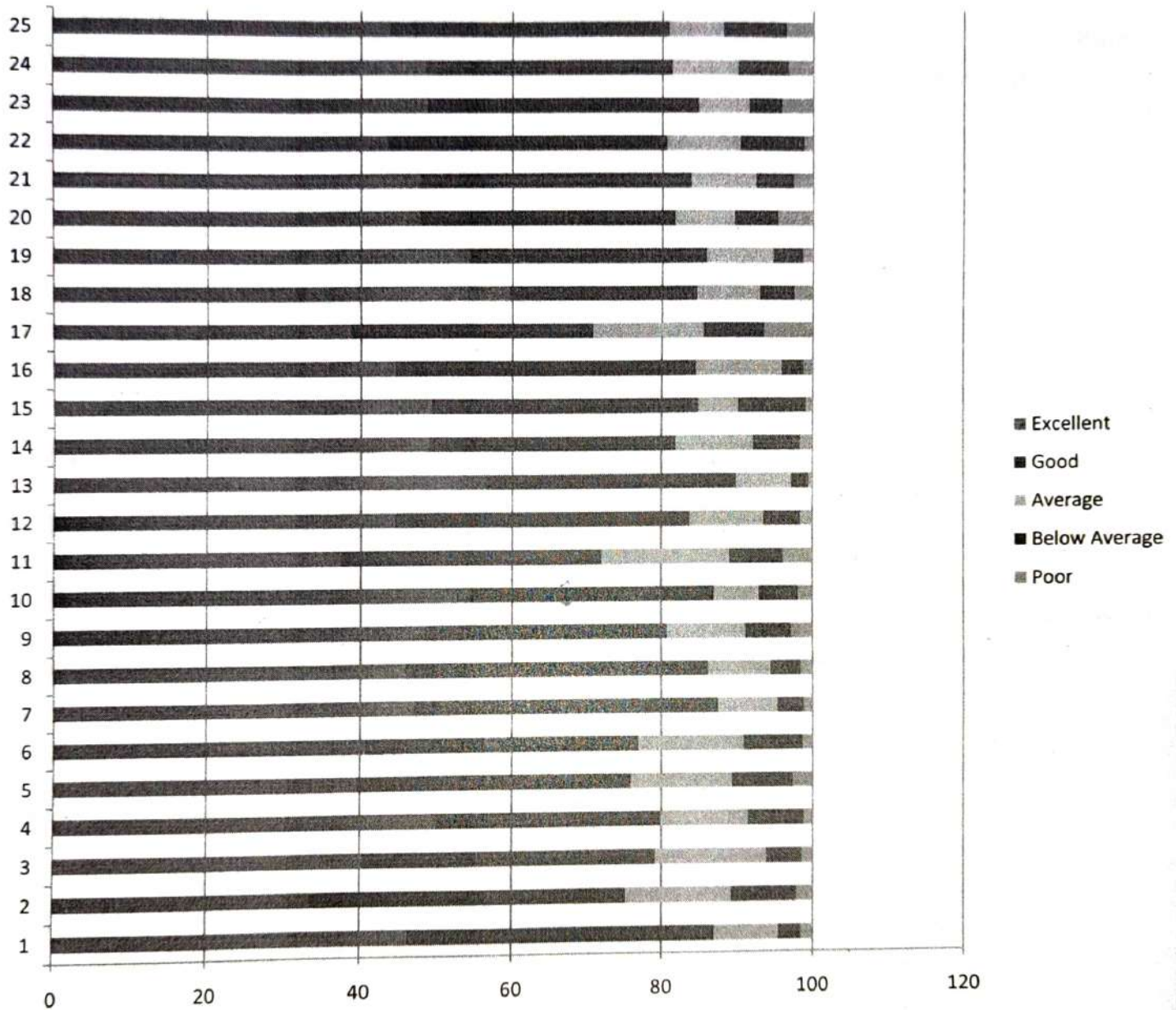
Excellent	Good	Average	Below Average	Poor
49.84%	42.42%	7.74%	0	0

Student Feedback for College Facilities

We have collected feedback from our post graduate students and Under graduate students. We have received total 1149 student's feedback on college facility and analyzed as follows-

Qu. no	Evaluation Point	Response in%				
		Excellent	Good	Average	Below Average	Poor
1	Discipline in the college	46.21	40.82	8.44	2.96	1.57
2	Drinking water facility in college	33.42	41.77	14.01	8.62	2.18
3	Toilet facility	40.29	38.91	14.71	4.61	1.48
4	Library	49.87	30.02	11.58	7.31	1.22
5	Canteen	39.6	36.37	13.41	8.01	2.61
6	Parking Facility	40.81	36.21	13.92	7.75	1.31
7	Games and Sports	46.99	40.57	7.83	3.48	1.13
8	Cultural Activity	45.87	40.37	8.27	3.92	1.57
9	Seating Arrangement in class	48.38	32.38	10.37	6.09	2.78
10	Light /Fan	54.31	32.72	5.92	5.22	1.83
11	Facility of new technology	37.42	34.55	17.06	7.14	3.83
12	Fee counter facility	44.39	39.33	9.84	4.87	1.57
13	NCC/NSS/Youth Red Cross	56.48	33.43	7.31	2.26	0.52
14	Girls Common Room	48.91	32.99	10.27	6.18	1.65
15	Cleanliness in college Campus	49.26	35.6	5.31	8.96	0.87
16	Departmental Activities	44.47	40.03	11.41	2.87	1.22
17	Educational Tour (Essay ,discussion , debates ,etc)	38.73	32.11	14.71	8.01	6.44
18	Ragging free Environment	59.62	24.98	8.35	4.61	2.44
19	Sexual discrimination free environment	54.31	31.59	8.79	3.92	1.39
20	Pollution free campus	47.69	34.05	7.83	5.74	4.69
21	Participation in social works	47.69	36.12	8.62	5.05	2.52

	(blood donation, PSC Coaching, etc)					
22	Participation in public awareness rally/works	43.52	37.07	9.75	8.53	1.13
23	Behavior of college staff with student	48.74	36.12	6.7	4.35	4.09
24	Availability of Complaint Box	48.48	32.81	8.79	6.7	3.22
25	Availability of Suggestion Box	43.86	37.08	7.14	8.44	3.48



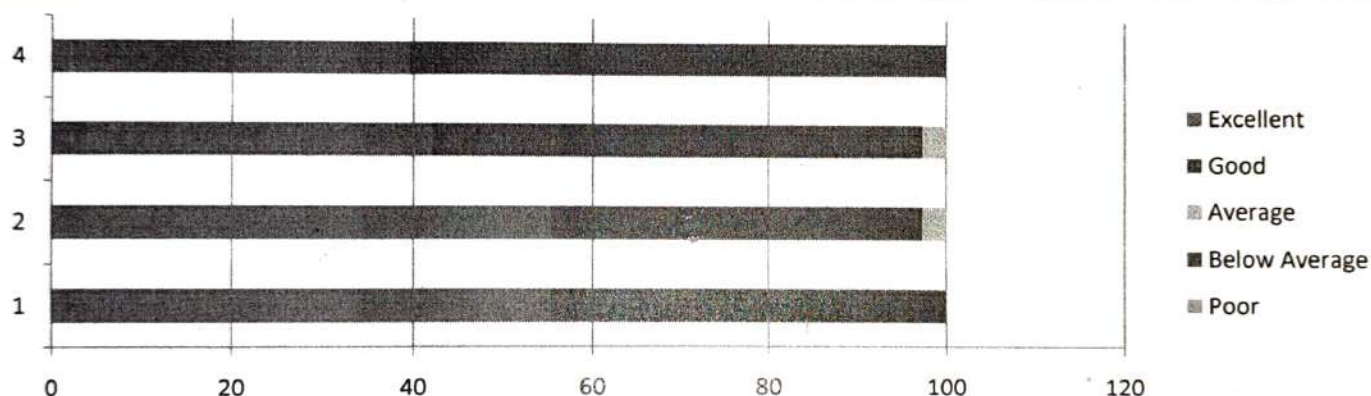
Opinion about the College Facility :

Excellent	Good	Average	Below Average	Poor
46.37%	35.52%	10.02%	5.82%	2.27%

Teachers feedback for Curriculum

The college is affiliated to Pt. Ravishankar University , Raipur (C.G.) and follows the prescribed curriculum. We have collected feedback on curriculum from respective subject teachers regarding suggestion on improvement of the syllabus of PG Courses. We have received 38 teacher's feedback on the curriculum and analyzed as follows-

Qu.no	Curriculum Evaluation Point	Response in%				
		Excellent	Good	Average	Below Average	Poor
1	Availability of reference books and text books	55.26	44.73	0	0	0
2	Quality and utility of the course	55.26	42.11	2.63	0	0
3	Job oriented course	42.11	55.26	2.63	0	0
4	Intensity if the course material	39.47	60.53	0	0	0



Opinion about the Syllabus by the Teachers :

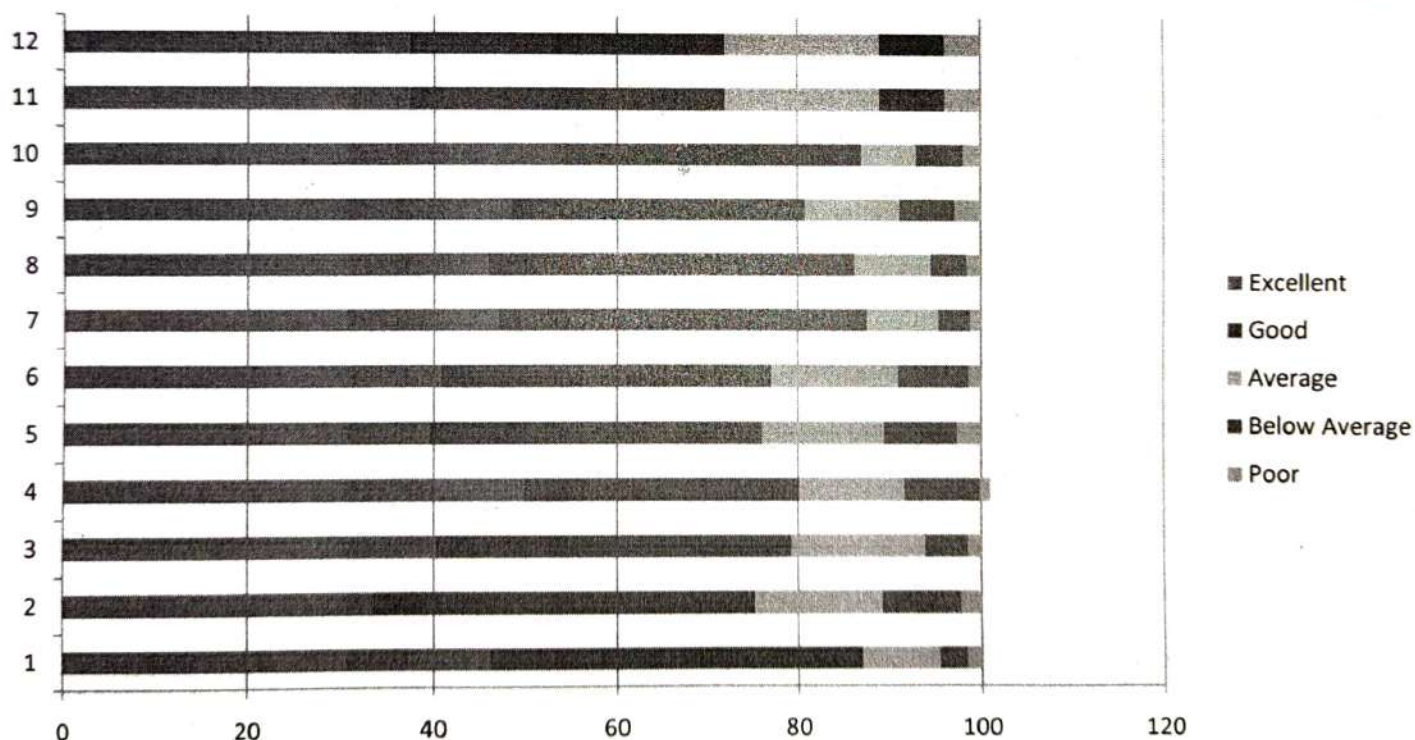
Excellent	Good	Average	Below Average	Poor
34.21%	50.66%	1.32%	0	0

Student Feedback for Teachers

The feedback from the students is collected on the subject teacher of the various subjects and analyzed . We have received total 5434 students feedback:

Qu. no	Evaluation Point	Response in%				
		Excellent	Good	Average	Below Average	Poor

1	Punctuality of Teacher	68.62	26.32	4.21	0.53	0.32
2	Regularity of teacher	63.67	29.06	6.24	0.9	0.13
3	Subject knowledge	69.65	24.9	4.36	0.94	0.15
4	Expression of the subject and style	56.7	34.59	7.16	1.07	0.48
5	Capability of maintaining discipline in the class	57.32	33.58	7.27	1.39	0.44
6	Facilitating the students with book ,notes, etc.	42.73	38.2	13.51	4.12	1.44
7	Referring secondary resources like Reference Book, Journals, website	38.33	38.7	14.98	5.36	2.63
8	Use of new technologies(Projector, Laptop, etc)	27.94	36.73	19.6	7.78	7.95
9	Use of class test ,Presentation, Seminar, etc.)	39.84	34.89	16.99	4.97	3.31
10	Employment related suggestion and guidance	37.52	37.03	16.75	5.29	3.41
11	To suggest students regarding various problems of life	47.55	34.06	12.24	4.03	2.12
12	Behaviors with student and emotional attachment	63.18	27.88	6.15	1.87	0.92



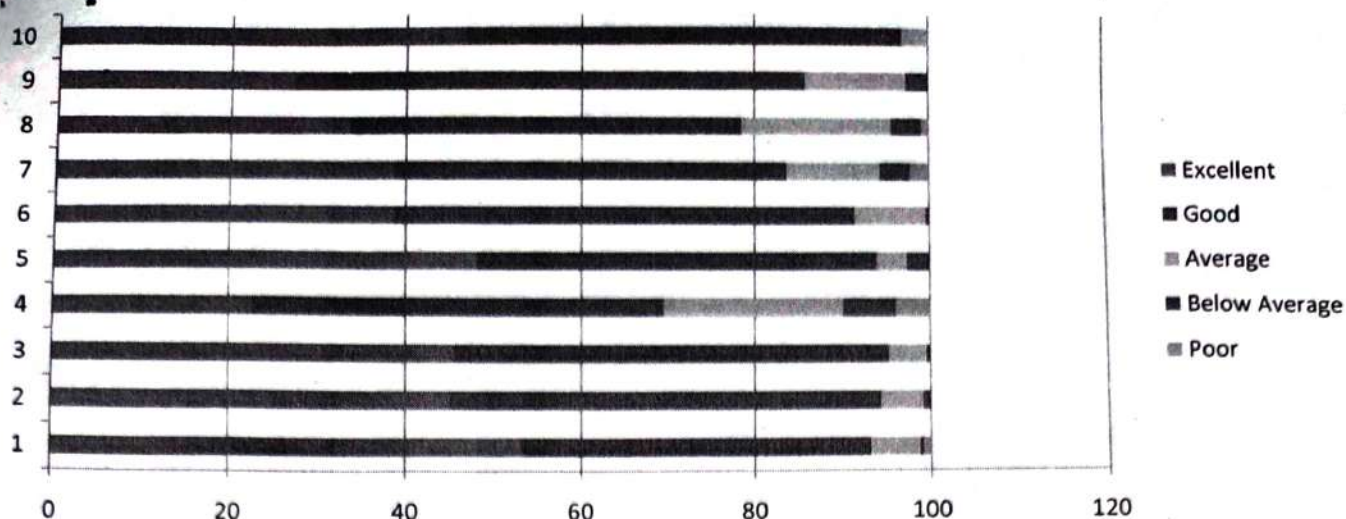
Opinion about the Teachers by the Student's :

Excellent	Good	Average	Below Average	Poor
51.09%	32.99%	10.79%	3.19%	1.94%

Parent's Feedback For Teaching-Learning And College Facilities

The feedback from the parent collected on the teaching-learning and college facilities and analyzed .We have received total 233 parents feedback.

Qu. no	Evaluation Point	Response in %				
		Excellent	Good	Average	Below Average	Poor
1	Are there sufficient and competent teacher's in your college to teach your ward?	53.22	39.91	5.58	0.43	0.86
2	Are you satisfied with teaching of teachers in the college?	45.06	49.36	4.72	0.86	0
3	Are you satisfied with study of your ward?	45.49	49.79	4.29	0.43	0
4	Do the teachers use modern technology?	22.75	46.78	20.6	6.01	3.86
5	Is behavior of teachers ,office staff etc. of college positive towards students?	48.07	45.92	3.43	2.58	0
6	Is positive change/effect of the college reflected in your ward?	38.63	52.79	8.15	0.43	0
7	Are you satisfied with Library facility?	38.63	45.06	10.73	3.43	2.15
8	Are you satisfied with the amenities such as drinking water, parking, etc in the college?	33.48	45.06	17.17	3.43	0.86
9	Are you satisfied with cultural activities arranged for the students in the college?	27.04	58.79	11.59	2.58	0
10	Will you advise other students to study in this college?	46.78	50.21	3.01	0	0



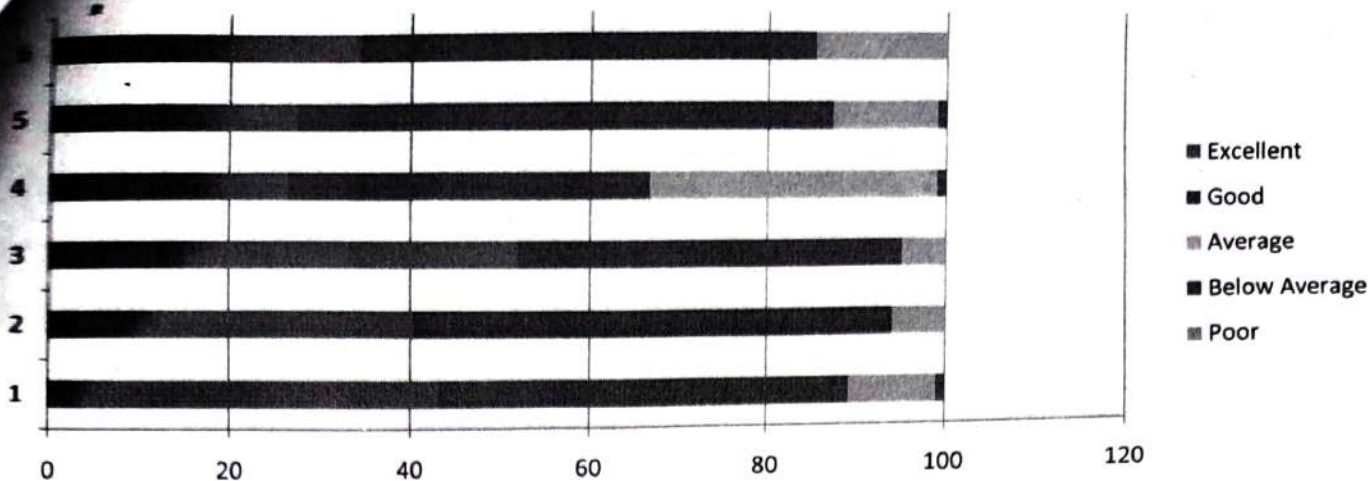
Opinion about the Teaching-Learning And College Facilities by the Parents :

Excellent	Good	Average	Below Average	Poor
39.91%	48.37%	8.93%	2.02%	0.77%

Parent's Feedback for Syllabus by the Parents

The feedback from the parent collected on the syllabus of the various programmes .We have received total 102 parents feedback on the syllabus of the various programmes designed and analyzed as follows-

Qu. no	Curriculum Evaluation Point	Response in%				
		Excellent	Good	Average	Below Average	Poor
1	Job oriented course	43.14	46.08	9.8	0.98	0
2	Course useful for personality development	40.2	53.92	5.88	0	0
3	Development of mental ability by the course	51.96	43.14	4.9	0	0
4	Relevant course in solving local problems	26.47	40.2	32.35	0.98	0
5	Fulfillment of expectation by the course	27.45	59.8	11.76	0.98	0
6	Total effect	34.31	50.98	14.71	0	0



Opinion about the Syllabus by the Parents :

Excellent	Good	Average	Below Average	Poor
37.25%	49.02%	13.24%	0.49%	0

Chandrika Sahu
In-charge Feedback Committee

Dr. Chandrika Sahu

Principal
PRINCIPAL
Govt. P.G. College
Dhamtari (C.G.)
B.C.S. Govt. P.G. College, Dhamtari

Feedback 2019-20

B.C.S.Govt.P.G.College, Dhamtari

Feedback is important parameter of the college mechanism to realize own potential for there future. College conducts feedback by course of action are planned for the development of the college students, teachers and parents are different stakeholder's .The feedback process has put an emphasis on the involvement of all the stakeholder's for the development of the college.

For receiving feedback has been collected in mid of the academic session and parents feedback were collected. Feedback based on questionnaires and designed to measure the perception of each stakeholder regarding ambience, infrastructure facilities , as well as curriculum ,co-curriculum and extra curriculum activities, teaching-learning resources, amenities in the campus.

Questions for student feedback on teachers are included on teaching-learning process, role of a teacher as mentor and career counselor parents feedback virtually focused on teaching-learning process , college facility and curriculum. As a stakeholder's, teacher's feedback on curriculum emphasized the assessment of present curriculum **with** respect to available recourses and innovation in teaching technology.

Feedback received from all stakeholder were sorted and consolidated for drafting and analysis has been made on the percentage basis and the aspect pointed out by all the stakeholder's are considered with special care and attention, then the suggestion received from different area like curriculum , amenities, resources and teaching-learning process are discussed and evaluated.

After discussion with IQAC and the principal feedback committee wrings out the final conclusion.

S.No	Feedback Type	Frequency (in Year)	Objective
1	Student Feedback on college	Once	College Facility
2	Student Feedback	Once	Design and Review of Curriculum
3	Student Feedback on Teacher	Once	Teaching of the Teacher
4	Parent Feedback	Once	Design and Review of Curriculum

5	Parent Feedback	Once	College Facility
6	Teacher Feedback	Once	Design and Review of Curriculum

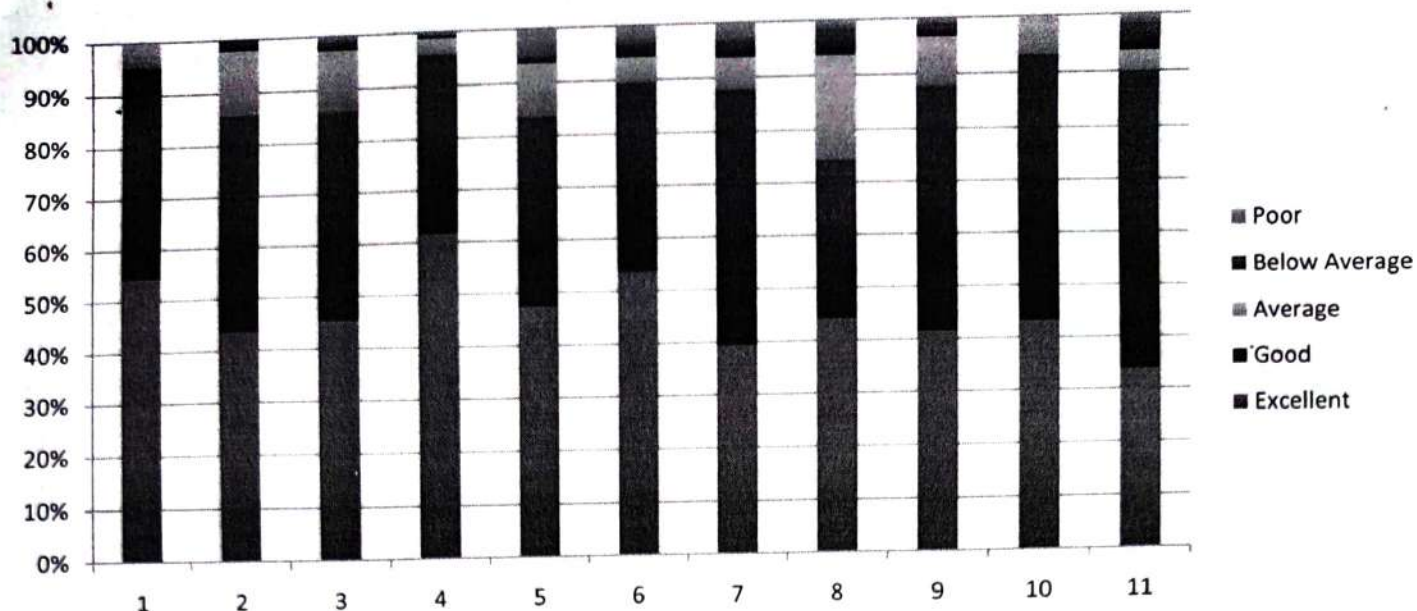
Final Report of Feedback Analysis on Curriculum ,College Facilities and Teacher 2019-20

Student's Feedback regarding Curriculum

The students are the most important stakeholder of Higher education system. The interest of participation of students at all levels both internal quality assurance and external quality assurance have played a central role.

We have collected feedback from our post graduate students. We have received (total 190 students) feedback on the syllabus of the various programmes designed by Pt.Ravishankar University Raipur and analyzed as follows-

Qu. No.	Curriculum Evaluation Point	Response in%				
		Excellent	Good	Average	Below Average	Poor
1	Intensity of course material	54.21	41.05	4.74	0	0
2	Job oriented course	43.68	42.11	12.11	2.11	0
3	Course related to competitive exam	45.26	40.53	11.58	1.58	1.05
4	Involvement of teacher and student in teaching and learning	61.58	34.2	3.16	0.53	0.53
5	Learnable value and ideological value	47.37	36.31	10	1.06	5.26
6	Completion of course during academic session	53.68	35.79	4.74	2.63	3.16
7	Real life related curriculum	39.47	48.42	5.79	3.16	3.16
8	Research oriented course	44.21	30	19.47	4.74	1.58
9	Relevant and clarity of the course	41.58	46.32	8.94	2.1	1.06
10	Development of mental ability by the course	43.16	50	6.84	0	0
11	Total effect	33.68	56.32	3.68	4.74	1.58



Opinion about the syllabus (in %):

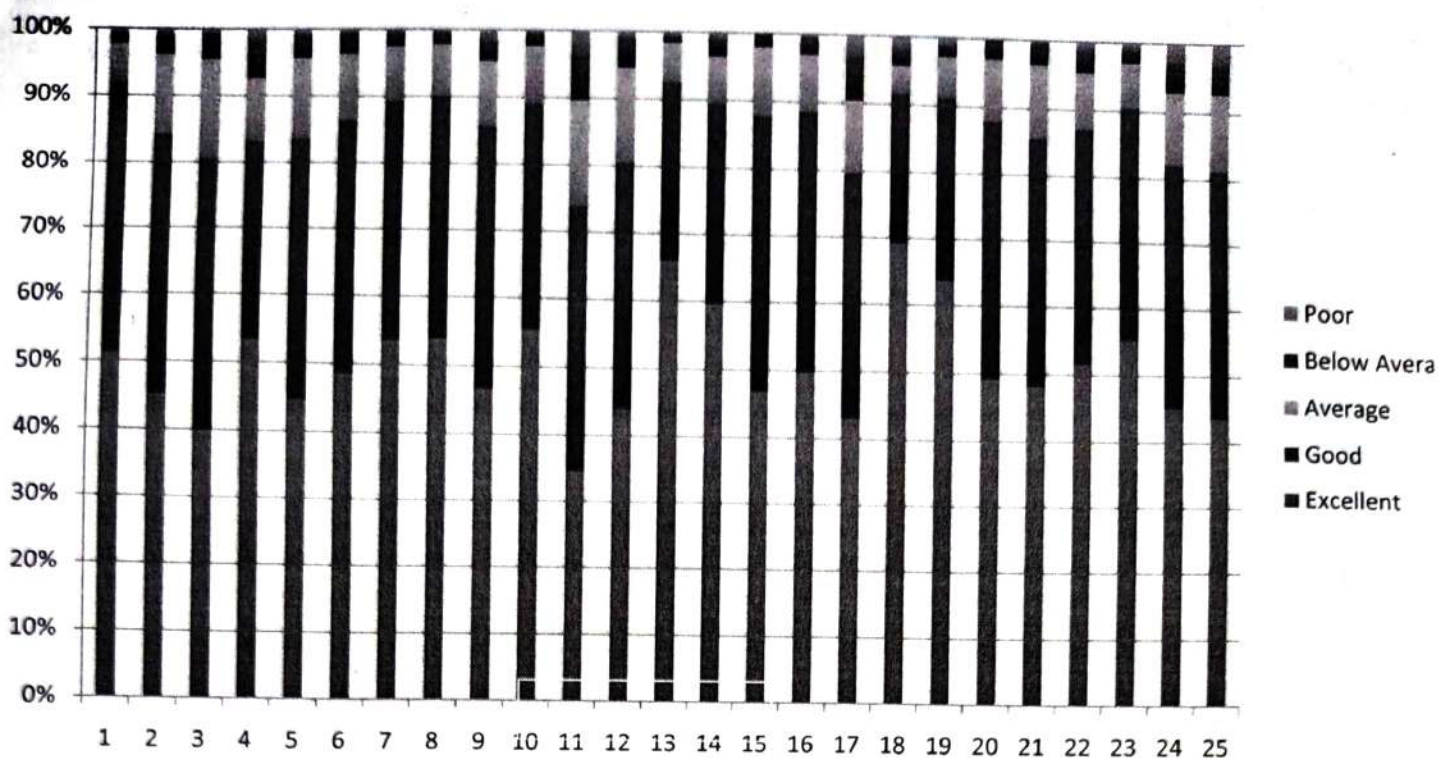
Excellent	Good	Average	Below Average	Poor
46.17	41.91	8.28	2.06	1.58

Student Feedback for College Facilities

We have collected feedback from our post graduate students and Under graduate students. We have received total 1020 student's feedback on college facility and analyzed as follows-

Qu. No.	Evaluation Point	Response in%				
		Excellent	Good	Average	Below Average	Poor
1	Discipline in the college	51.27	40.69	5.79	1.27	0.98
2	Drinking water facility in college	45.2	39.02	11.96	2.64	1.18
3	Toilet facility	39.9	40.69	14.8	3.73	0.88
4	Library	53.34	29.8	9.51	5.29	2.06
5	Canteen	44.71	38.92	11.96	3.43	0.98
6	Parking Facility	48.53	37.84	10	2.94	0.69

7	Games and Sports	53.43	35.78	8.14	1.86	0.79
8	Cultural Activity	53.82	36.27	7.65	1.57	0.69
9	Seating Arrangement in class	46.67	39.02	9.61	2.75	1.95
10	Light /Fan	55.29	33.63	8.63	1.6	0.75
11	Facility of new technology	34.61	39.31	15.78	6.47	3.83
12	Fee counter facility	44.02	36.47	14.02	4.31	1.18
13	NCC/NSS/Youth Red Cross	65.98	26.57	5.78	0.88	0.79
14	Girls Common Room	59.61	29.9	6.96	2.45	1.08
15	Cleanliness in college Campus	46.86	40.98	10.1	1.86	0.2
16	Departmental Activities	49.8	38.73	8.43	2.45	0.59
17	Educational Tour (Essay,discussion,debates,etc.)	43.04	36.67	10.68	6.27	3.34
18	Ragging free Environment	69.22	22.35	4.12	2.16	2.15
19	Sexual discrimination free environment	63.73	27.45	5.98	1.57	1.27
20	Pollution free campus	49.12	38.82	9.12	2.75	0.19
21	Participation in social works (blood donation, PSC Coaching, etc.)	48.24	37.35	10.88	3.04	0.49
22	Participation in public awareness rally/works	51.57	35.49	8.43	3.14	1.37
23	Behavior of college staff with student	55.2	35.29	6.57	1.86	1.08
24	Availability of Complaint Box	45.2	36.86	10.88	4.31	2.75
25	Availability of Suggestion Box	43.73	37.55	11.47	4.22	3.03



Opinion about the College Facility (in %):

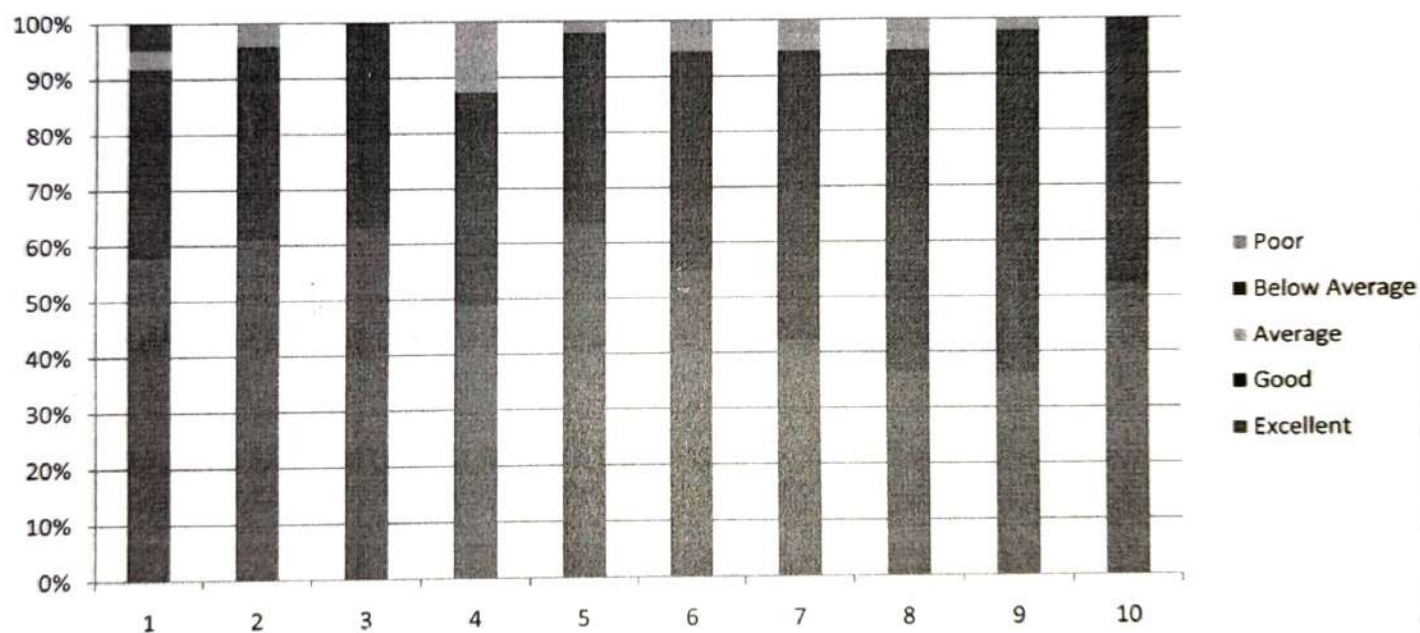
Excellent	Good	Average	Below Average	Poor
50.48	35.66	9.49	2.99	1.37

Teachers feedback for Curriculum

The college is affiliated to Pt. Ravishankar University , Raipur (C.G.) and follows the prescribed curriculum. We have collected feedback on curriculum from respective subject teachers regarding suggestion on improvement of the syllabus of PG Courses. We have received 49 teacher's feedback on the curriculum and analyzed as follows-

Qu. No.	Curriculum Evaluation Point	Response in%				
		Excellent	Good	Average	Below Average	Poor
1	Availability of reference materials and text books	57.64	34.17	3.33	4.86	0
2	Qualitative and usefulness of running course	61.11	34.72	4.17	0	0
3	Assessment of syllabus by students	63.06	36.94	0	0	0

4	Job oriented course	48.88	38.48	12.64	0	0
5	Intensity of the course material	63.34	34.58	2.08	0	0
6	Mutual cooperation between teacher and students in Teaching and Learning	54.86	39.58	5.56	0	0
7	Inclusion of idealistic value in syllabus	42.36	52.08	5.56	0	0
8	Utility of syllabus in real life	36.11	58.33	5.56	0	0
9	Inclusion of new methods / technologies in various courses	36.11	61.81	2.08	0	0
10	Overall effect	52.08	47.92	0	0	0



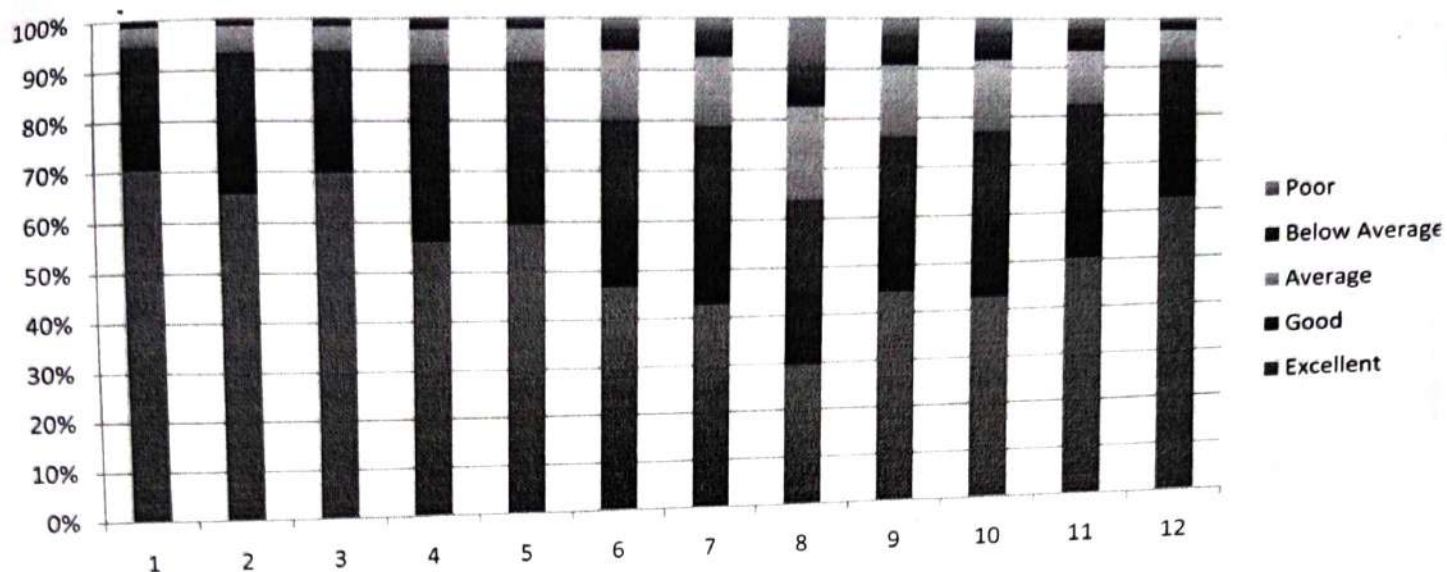
Opinion about the Syllabus by the Teachers (in %) :

Excellent	Good	Average	Below Average	Poor
51.555	43.861	4.098	0.486	0

Student Feedback for Teachers

The feedback from the students is collected on the subject teacher of the various subjects and analyzed . We have received total 5554 students feedback.

Qu. No.	Evaluation Point	Response in%				
		Excellent	Good	Average	Below Average	Poor
1	Punctuality of Teacher	70.45	24.34	3.98	0.99	0.24
2	Regularity of teacher	65.57	27.93	5.15	1.1	0.25
3	Subject knowledge	69.72	24.11	4.72	1.26	0.19
4	Expression of the subject and style	56.19	34.77	6.93	1.71	0.4
5	Capability of maintaining discipline in the class	59.52	32.05	6.39	1.66	0.38
6	Facilitating the students with book, notes, etc.	46.65	33.56	13.52	4.15	2.12
7	Referring secondary resources like Reference Book, Journals, website	42.71	36.19	13.68	4.79	2.63
8	Use of new technologies (Projector, Laptop, etc.)	29.62	34.37	18.6	7.99	9.42
9	Use of class test ,Presentation, Seminar, etc.	44.47	31.85	14.3	6.12	3.26
10	Employment related suggestion and guidance	42.76	34.35	14.48	5.33	3.08
11	To suggest students regarding various problems of life	50.36	31.95	11.15	4.38	2.16
12	Behaviors with student and emotional attachment	62.62	28.67	6.43	1.67	0.61



Opinion about the Teachers by the Student's (in %) :

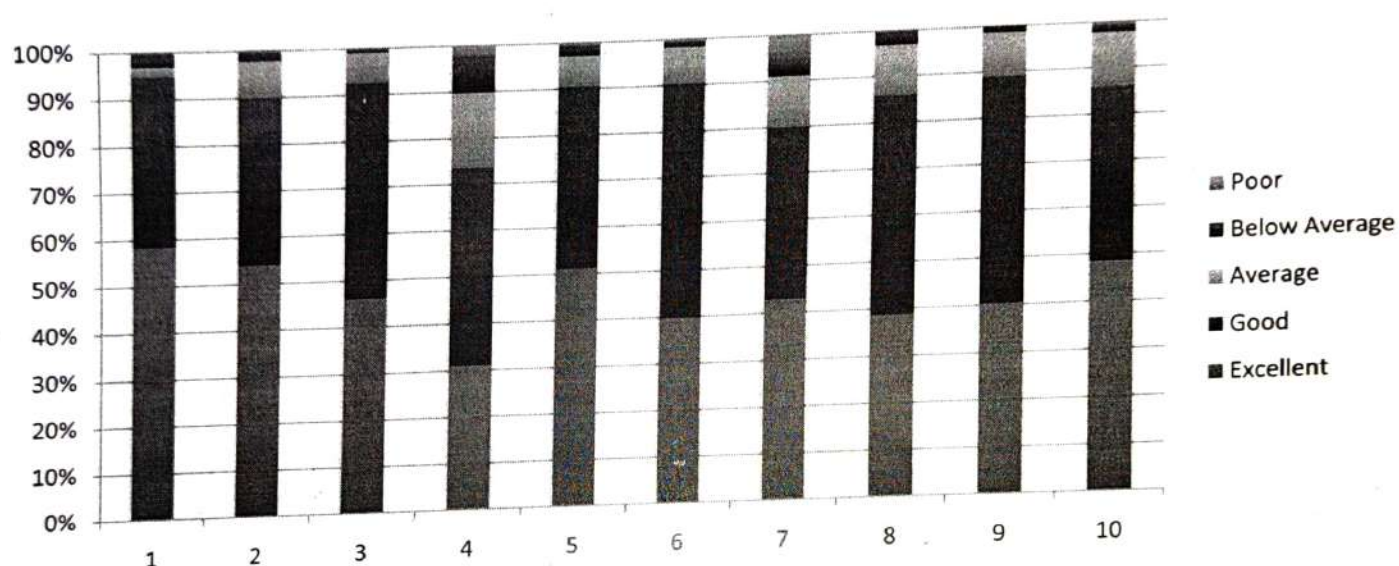
Excellent	Good	Average	Below Average	Poor
53.387	31.18	9.944	3.429	2.062

Parent's Feedback For Teaching-Learning And College Facilities

The feedback from the parent collected on the teaching-learning and college facilities and analyzed .We have received total 348 parents feedback.

Qu. No.	Evaluation Point	Response in%				
		Excellent	Good	Average	Below Average	Poor
1	Are there sufficient and competent teacher in your college to teach your ward?	58.34	36.49	2.01	2.87	0.29
2	Are you satisfied with teaching of teachers in the college?	54.02	35.92	7.76	2.01	0.29
3	Are you satisfied with study of your ward?	45.98	46.55	6.61	0.57	0.29
4	Are modern teachers used to teach your ward?	31.03	42.54	16.09	8.05	2.29
5	Is behavior of teachers ,office staff etc. of college positive towards students?	51.16	39.37	6.6	2.01	0.86

6	Is positive change/effect of the college reflected in your ward?	39.66	50.57	8.05	1.15	0.57
7	Are you satisfied with Library facility?	42.82	37.07	11.21	3.45	5.45
8	Are you satisfied with the amenities such as drinking water, parking, etc in the college?	38.79	47.13	10.92	2.87	0.29
9	Are you satisfied with cultural activates arranged for the student in the college?	40.23	48.85	9.48	1.44	0
10	Will you advice other students to study in this college?	48.56	37.36	11.78	1.44	0.86



Opinion about the Teaching-Learning And College Facilities by the Parents (in %):

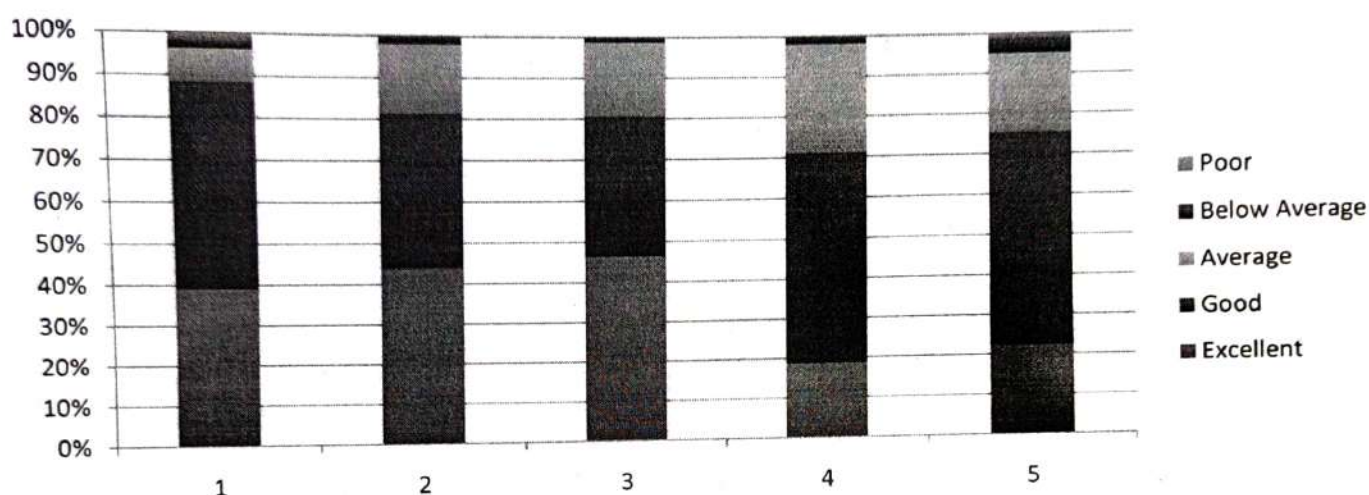
Excellent	Good	Average	Below Average	Poor
45.059	42.19	9.051	2.586	1.119

Parent's Feedback for Syllabus by the Parents

The feedback from the parent collected on the syllabus of the various programmes .We have received total 166 parents feedback on the syllabus of the various programmes designed and analyzed as follows-

Qu. No.	Curriculum Evaluation Point	Response in%				
		Excellent	Good	Average	Below Average	Poor

1	Job oriented course	39.16	49.4	7.82	1.81	1.81
2	Course useful for personality development	43.98	37.34	16.87	1.81	0
3	Development of mental ability by the course	46.39	34.34	18.07	1.2	0
4	Relevant course in solving local problems	18.67	52.41	27.11	1.81	0
5	Fulfillment of expectation by the course	22.29	53.01	19.88	3.62	1.2



Opinion about the Syllabus by the Parents (in %) :

Excellent	Good	Average	Below Average	Poor
34.098	45.3	17.95	2.05	0.602

C. Sahu
In-charge Feedback Committee

Dr. Chandrika Sahu

Principal
PRINCIPAL
Govt. P.G. College
Dhamtari
B.C.S. Govt. P.G. College, Dhamtari