

# SC105

## Color TFT & Graphical UI RFID Access Control Terminal



SC105 is a RFID Access Control Terminal which possesses a 2.0-inch color display with graphical UI, enabling simple and easy control. It has a built-in auxiliary input function which enhances the flexibility to be connected with wired detector or emergency switch. With multi-verification methods by combinations of PIN, password and card, high level of security and flexibility are guaranteed. Moreover, the product supports USB flash drive for offline data management, as well as is equipped with multiple alarm outputs such as Tamper Proof Switch and Duress Alarm. Its convenience and adaptability allow it to be well deployed in residential housing, offices and any other public facilities.

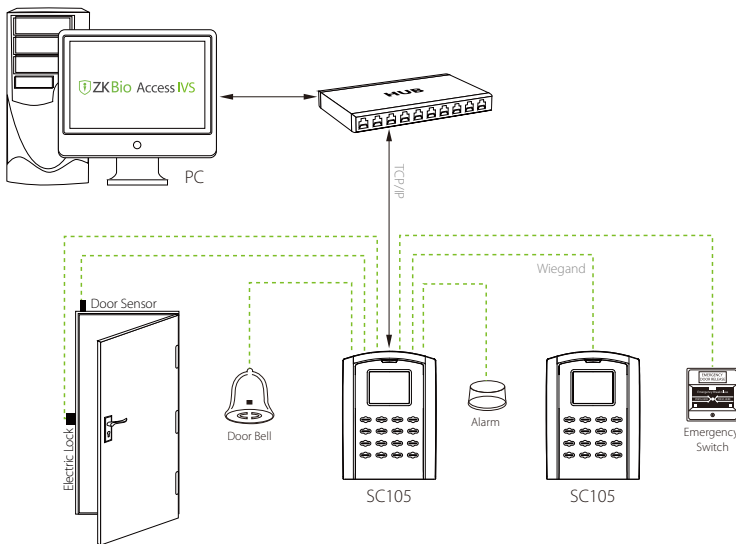
### Feature

- 2.0-inch color display with graphical UI for easy operation
- Up to 24 user-defined schedules that can be activated on a daily bell alert
- Prompt audio acceptance or rejection signals for valid or invalid cards
- TCP/IP or RS485 communication for various networking environments
- Supports USB flash drive for offline data management
- Built-in auxiliary input with enhanced flexibility to link with wired detector or emergency switch
- Multi-verification methods to enhance security level
- Standard access control features such as Time zone, Holiday, A&C Group, Unlock combination etc.
- Duress Alarm offers effective protection against duress by threats
- Tamper Proof Switch and multiple alarm outputs
- Multi-languages

# Specifications

card Capacity	30,000
Transaction Capacity	80,000
Communication	TCP/IP, RS485, USB-Host
Interface for Access Control	3rd party electric lock, door sensor, exit button, alarm, doorbell
Auxiliary Interface	1ea for linkage function
Wiegand Signal	Output & Input, SRB
Standard Functions	ID Card, Automatic Status Switch, Self-Service Query, DST, 9 Digit User ID, Scheduled Bell, Anti-passback, HTTPS, SSH, SRB
Optional Functions	IC Card, Print Function, Felica Card, Webserver, Workcode
Display	TFT LCD Color Screen
Power Supply	DC 12V
Operating Temperature	0°C ~ 45°C
Operating Humidity	20% ~ 80%
Dimension (LxWxH)	130x94x52mm
SDK	AC PUSH SDK
Software	ZKBioAccess IVS

## Configuration



## Dimensions (mm)

